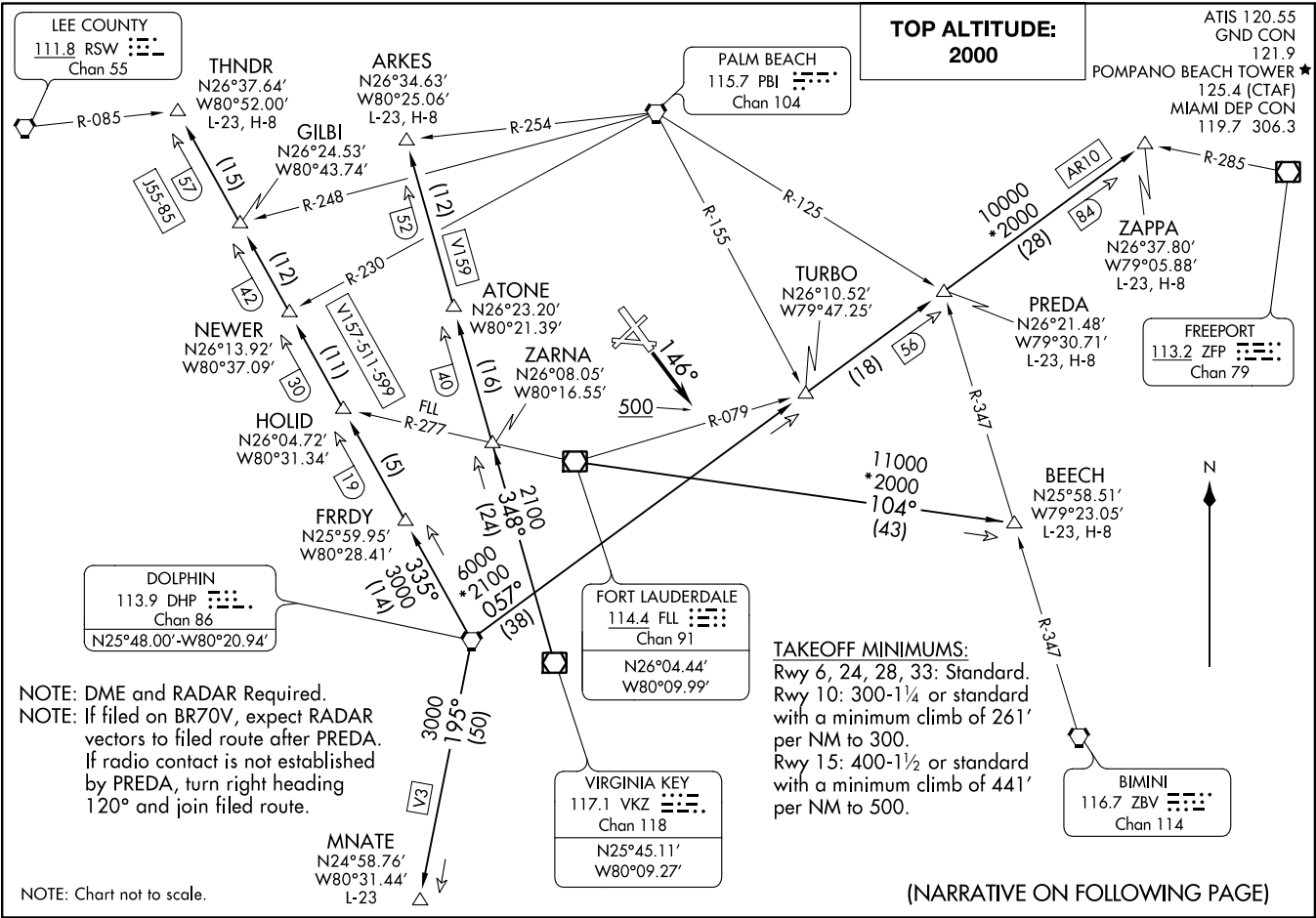


(FL16, FL1) 25JUN18

FORT LAUDERDALE SIX DEPARTURE

POMPANO BEACH, FLORIDA
POMPANO BEACH AIRPARK (PMP)



NOTE: DME and RADAR Required.
 NOTE: If filed on BR70V, expect RADAR vectors to filed route after PREDA. If radio contact is not established by PREDA, turn right heading 120° and join filed route.

NOTE: Chart not to scale.

TAKEOFF MINIMUMS:
 Rwy 6, 24, 28, 33: Standard.
 Rwy 10: 300-1¼ or standard with a minimum climb of 261' per NM to 300.
 Rwy 15: 400-1½ or standard with a minimum climb of 441' per NM to 500.

(NARRATIVE ON FOLLOWING PAGE)

(FL16, FL1) 18312

SI-5972 (FAA)

POMPANO BEACH AIRPARK (PMP)
POMPANO BEACH, FLORIDA

FORT LAUDERDALE SIX DEPARTURE

FORT LAUDERDALE SIX DEPARTURE



DEPARTURE ROUTE DESCRIPTION

TAKEOFF RWYS 6, 10, 24, 28, 33: Climb on assigned heading. Thence

TAKEOFF RWY 15: Climb heading 146° to 500, then climb on assigned heading. Thence
. . . . Maintain 2000 or higher assigned altitude and expect radar vectors to appropriate transition. Expect further clearance to filed altitude ten (10) minutes after departure.

ARKES TRANSITION (FLL6.ARKES): From over VKZ VOR/DME on VKZ R-348 to ARKES INT.

BEECH TRANSITION (FLL6.BEECH): From over FLL VOR/DME on FLL R-104 to BEECH INT.

MNATE TRANSITION (FLL6.MNATE): From over DHP VORTAC on DHP R-195 to MNATE.

PREDA TRANSITION (FLL6.PREDA): From over DHP VORTAC on DHP R-057 to PREDA INT.

THNDR TRANSITION (FLL6.THNDR): From over DHP VORTAC on DHP R-335 to THNDR INT.

ZAPPA TRANSITION (FLL6.ZAPPA): From over DHP VORTAC on DHP R-057 to ZAPPA INT.

SE-3, 06 DEC 2018 to 03 JAN 2019

SE-3, 06 DEC 2018 to 03 JAN 2019