

BALDY THREE DEPARTURE
(BALDY3,MAXXO) 28FEB19

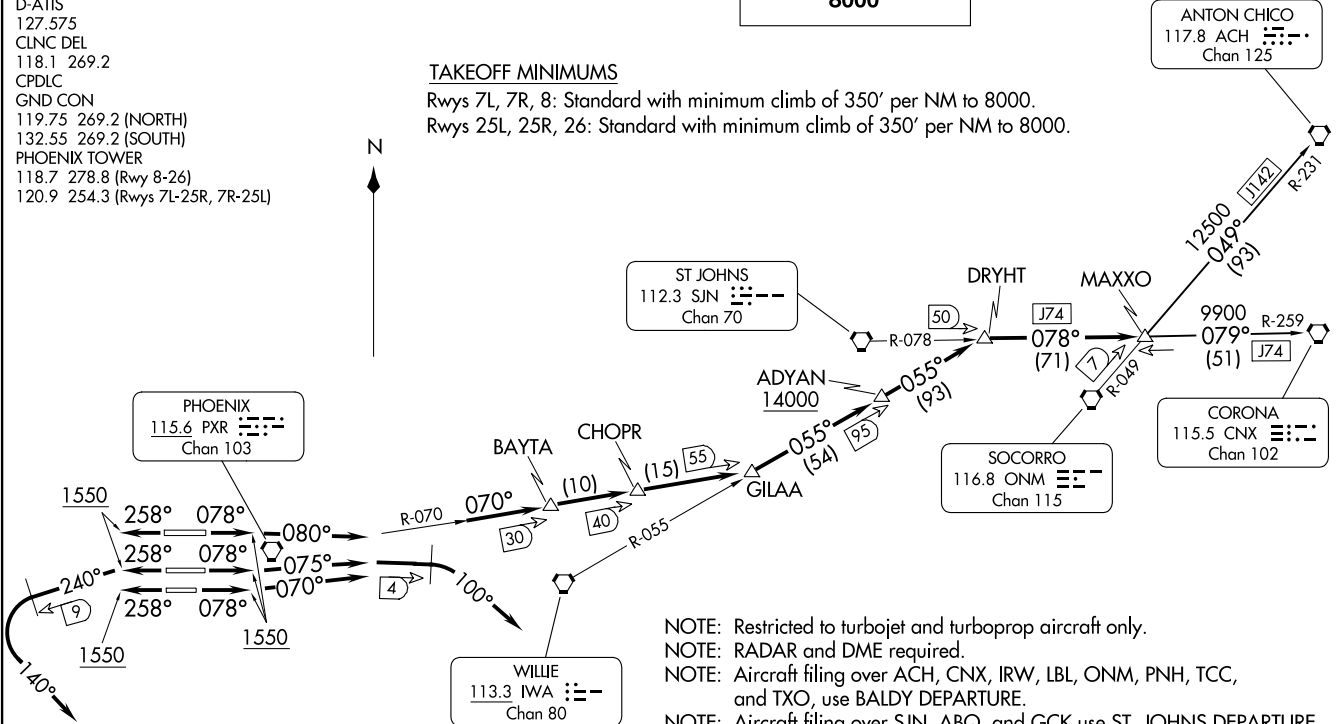
PHOENIX SKY HARBOR INTL (PHX)
PHOENIX, ARIZONA

PHOENIX DEP CON
126.8 269.6
D-ATIS
127.575
CLNC DEL
118.1 269.2
CPDLC
GND CON
119.75 269.2 (NORTH)
132.55 269.2 (SOUTH)
PHOENIX TOWER
118.7 278.8 (Rwy 8-26)
120.9 254.3 (Rwys 7L-25R, 7R-25L)

**TOP ALTITUDE:
8000**

TAKEOFF MINIMUMS

Rwys 7L, 7R, 8: Standard with minimum climb of 350' per NM to 8000.
Rwys 25L, 25R, 26: Standard with minimum climb of 350' per NM to 8000.



- NOTE: Restricted to turbojet and turboprop aircraft only.
- NOTE: RADAR and DME required.
- NOTE: Aircraft filing over ACH, CNX, IRW, LBL, ONM, PNH, TCC, and TXO, use BALDY DEPARTURE.
- NOTE: Aircraft filing over SJN, ABQ, and GCK use ST. JOHNS DEPARTURE.
- NOTE: MRA CHOPR/PXR 40 DME 9100 to receive PXR.
- NOTE: MRA GILAA/PXR 55 DME 14000 to receive PXR and IWA.
- NOTE: MRA ADYAN/IWA 95 DME FL240 to receive IWA.

(CONTINUED ON FOLLOWING PAGE)

NOTE: Chart not to scale.

(BALDY3,MAXXO) 28334
BALDY THREE DEPARTURE

AL-322 (FAA)

PHOENIX SKY HARBOR INTL (PHX)
PHOENIX, ARIZONA

BALDY THREE DEPARTURE



DEPARTURE ROUTE DESCRIPTION

TAKEOFF RUNWAY 7L: Climb heading 078° to 1550, then climbing left turn heading 075°, at 4 DME east of PXR VORTAC, climbing right turn heading 100°. Thence

TAKEOFF RUNWAY 7R: Climb heading 078° to 1550, then climbing left turn heading 070°, at 4 DME east of PXR VORTAC, climbing right turn heading 100°. Thence

TAKEOFF RUNWAY 8: Climb heading 078° to 1550, then climbing right turn heading 080°, at 4 DME east of PXR VORTAC, climbing right turn heading 100°. Thence

TAKEOFF RUNWAY 25L: Climb heading 258° to 1550, then climbing left turn heading 240°, at 9 DME west of PXR VORTAC, climbing left turn heading 140°. Thence

TAKEOFF RUNWAY 25R: Climb heading 258° to 1550, then climbing left turn heading 240°, at 9 DME west of PXR VORTAC, climbing left turn heading 140°. Thence

TAKEOFF RUNWAY 26: Climb heading 258° to 1550, then climbing left turn heading 240°, at 9 DME west of PXR VORTAC, climbing left turn heading 140°. Thence

. . . . maintain 8000 for RADAR vectors to PXR R-070 to GILAA/PXR 55 DME, then pilot nav on IWA R-055 to ADYAN/IWA 95 DME, cross ADYAN at or above 14000 and proceed on RADAR vector 055° to join SJN R-078/CNX R-259 to MAXXO/CNX 51 DME; then (transition). Expect filed altitude 3 minutes after departure.

LOST COMMUNICATIONS: Expect filed altitude 3 minutes after departure.

ANTON CHICO TRANSITION (BALDY3.ACH): From over MAXXO INT on ONM R-049 and ACH R-231 to ACH VORTAC.

CORONA TRANSITION (BALDY3.CNX): From over MAXXO INT on CNX R-259 to CNX VORTAC.

SW-4, 22 FEB 2024 to 21 MAR 2024

SW-4, 22 FEB 2024 to 21 MAR 2024

(BROAK1 .BROAK) 24MAY18
BROAK ONE DEPARTURE (RNAV)

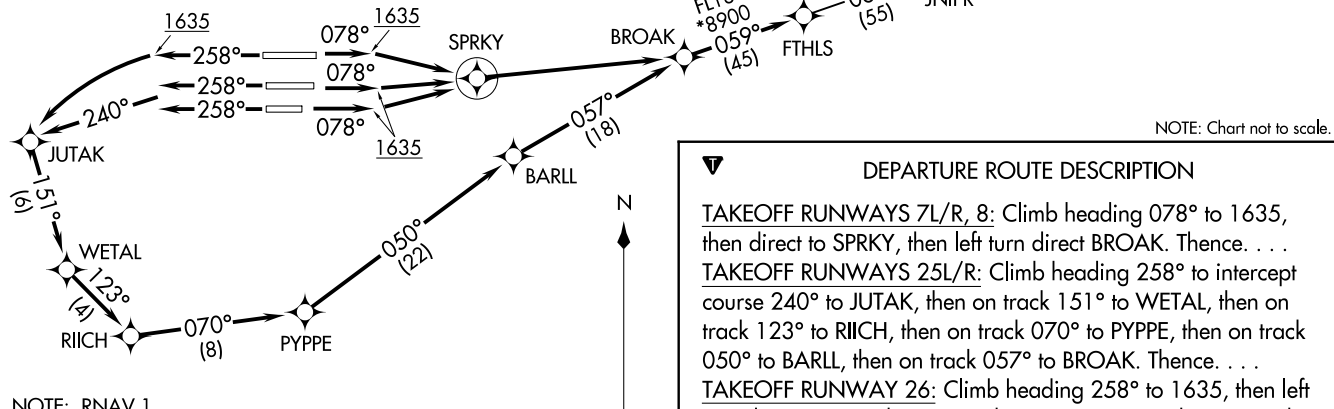
PHOENIX ARIZONA
 PHOENIX SKY HARBOR INTL (PHX)

D-ATIS
 127.575
 CLNIC DEL
 118.1 269.2
 CPDLC
 GND CON
 119.75 269.2 (NORTH)
 132.55 269.2 (SOUTH)
 PHOENIX TOWER
 118.7 278.8 (Rwy 8-26)
 120.9 254.3 (Rwys 7L-25R, 7R-25L)
 PHOENIX DEP CON
 126.8 269.6

TAKEOFF MINIMUMS

Rwys 7L/R, 8: Standard with minimum climb
 of 500' per NM to 1635.
 Rwys 25L/R, 26: Standard with minimum climb
 of 500' per NM to 1900.

**TOP ALTITUDE:
8000**



NOTE: Chart not to scale.

DEPARTURE ROUTE DESCRIPTION

TAKEOFF RUNWAYS 7L/R, 8: Climb heading 078° to 1635, then direct to SPRKY, then left turn direct BROAK. Thence. . .

TAKEOFF RUNWAYS 25L/R: Climb heading 258° to intercept course 240° to JUTAK, then on track 151° to WETAL, then on track 123° to RIICH, then on track 070° to PYPPE, then on track 050° to BARLL, then on track 057° to BROAK. Thence. . .

TAKEOFF RUNWAY 26: Climb heading 258° to 1635, then left turn direct JUTAK, then on track 151° to WETAL, then on track 123° to RIICH, then on track 070° to PYPPE, then on track 050° to BARLL, then on track 057° to BROAK. Thence. . .

. . . on track 059° to FTHLS, then on (transition). Maintain 8000, expect higher altitude 3 minutes after departure.

ALBUQUERQUE TRANSITION (BROAK1 .ABQ)
JNIPR TRANSITION (BROAK1 .JNIPR)
MAXXO TRANSITION (BROAK1 .MAXXO)

- NOTE: RNAV 1.
- NOTE: Turbojets and turboprops only.
- NOTE: RADAR required.
- NOTE: DME/DME/IRU or GPS required.
- NOTE: ABQ transition ATC assigned only.
- NOTE: Aircraft filing over ACH, LBL, ONM, CNX, PNH, MMB, TCC, IRW and TXO file BROAK DEPARTURE.
- NOTE: Aircraft filing over ABQ, CIM, FTI, and GCK file FORPE DEPARTURE.
- NOTE: Aircraft filing over DEN, RSK, ALS, and points north of ALS file MRBIL DEPARTURE.
- NOTE: For non-GPS equipped aircraft, PXR and TFD DMEs must be operational.

(BROAK1 .BROAK) 181144
BROAK ONE DEPARTURE (RNAV)

AL-322 (FAA)

PHOENIX ARIZONA
 PHOENIX SKY HARBOR INTL (PHX)

BUCKEYE FOUR DEPARTURE
(BXX4.BXX) 25JUN15

BUCKEYE FOUR DEPARTURE
(BXX4.BXX) 23334

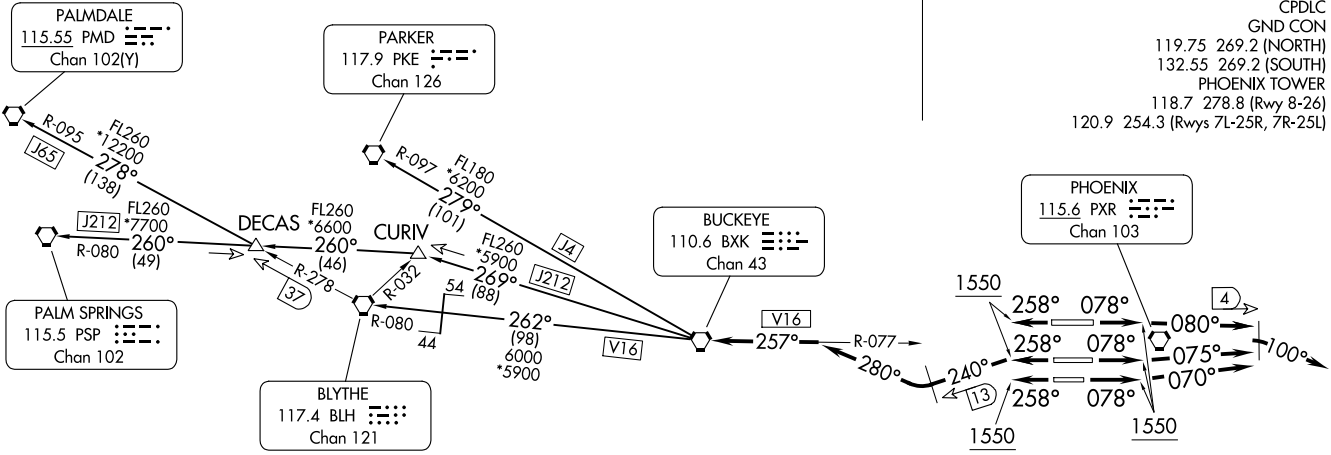
AL-322 (FAA)

PHOENIX SKY HARBOR INTL (PHX)
PHOENIX, ARIZONA

PHOENIX DEP CON
126.8 269.6
D-ATIS
127.575
CLNC DEL
118.1 269.2
CPDLC
GND CON
119.75 269.2 (NORTH)
132.55 269.2 (SOUTH)
PHOENIX TOWER
118.7 278.8 (Rwy 8-26)
120.9 254.3 (Rwys 7L-25R, 7R-25L)



**TOP ALTITUDE:
8000**



TAKEOFF MINIMUMS
Rwys 7L/7R/8: Standard with minimum climb of 300' per NM to 8000.
Rwys 25L/25R/26: Standard with minimum climb of 350' per NM to 8000.

- NOTE: Restricted to turbojet and turboprop aircraft only.
- NOTE: RADAR and DME required.
- NOTE: Aircraft requesting FL 220 and below must file BLYTHE Transition.
- NOTE: Turbojets landing LAX, file PARKER Transition.
- NOTE: Aircraft landing other than LAX and turboprops landing at LAX:
Requesting FL240 and above, file PALMDALE or PALM SPRINGS Transition.

NOTE: Chart not to scale.

(CONTINUED ON FOLLOWING PAGE)

PHOENIX, ARIZONA
PHOENIX SKY HARBOR INTL (PHX)



DEPARTURE ROUTE DESCRIPTION

TAKEOFF RUNWAY 8: Climb heading 078° to 1550, then climbing right turn heading 080°, at 4 DME east of PXR VORTAC, climbing right turn heading 100°. Expect RADAR vectors to BXX VORTAC. Thence

TAKEOFF RUNWAY 7L: Climb heading 078° to 1550, then climbing left turn heading 075°, at 4 DME east of PXR VORTAC, climbing right turn heading 100°. Expect RADAR vectors to BXX VORTAC. Thence

TAKEOFF RUNWAY 7R: Climb heading 078° to 1550, then climbing left turn heading 070°, at 4 DME east of PXR VORTAC, climbing right turn heading 100°. Expect RADAR vectors to BXX VORTAC. Thence

TAKEOFF RUNWAY 25L: Climb heading 258° to 1550, then climbing left turn heading 240°, at 13 DME west of PXR VORTAC, climbing right turn heading 280° to the BXX R-077 to BXX VORTAC. Thence

TAKEOFF RUNWAY 25R: Climb heading 258° to 1550, then climbing left turn heading 240°, at 13 DME west of PXR VORTAC, climbing right turn heading 280° to the BXX R-077 to BXX VORTAC. Thence

TAKEOFF RUNWAY 26: Climb heading 258° to 1550, then climbing left turn heading 240°, at 13 DME west of PXR VORTAC, climbing right turn heading 280° to the BXX R-077 to BXX VORTAC. Thence

. . . . maintain 8000, thence via (transition). Expect filed altitude 3 minutes after departure.

LOST COMMUNICATIONS: Expect filed altitude 3 minutes after departure.

BLYTHE TRANSITION (BXX4.BLH): From over BXX VORTAC via BXX R-262 and BLH R-080 to BLH VORTAC.

PALMDALE TRANSITION (BXX4.PMD): From over BXX VORTAC via BXX R-269 to CURIV INT, then via PSP R-080 to DECAS INT, then via BLH R-278 and PMD R-095 to PMD VORTAC.

PALM SPRINGS TRANSITION (BXX4.PSP): From over BXX VORTAC via BXX R-269 to CURIV INT, then via PSP R-080 to PSP VORTAC.

PARKER TRANSITION (BXX4.PKE): From over BXX VORTAC via BXX R-279 and PKE R-097 to PKE VORTAC.

SW-4, 22 FEB 2024 to 21 MAR 2024

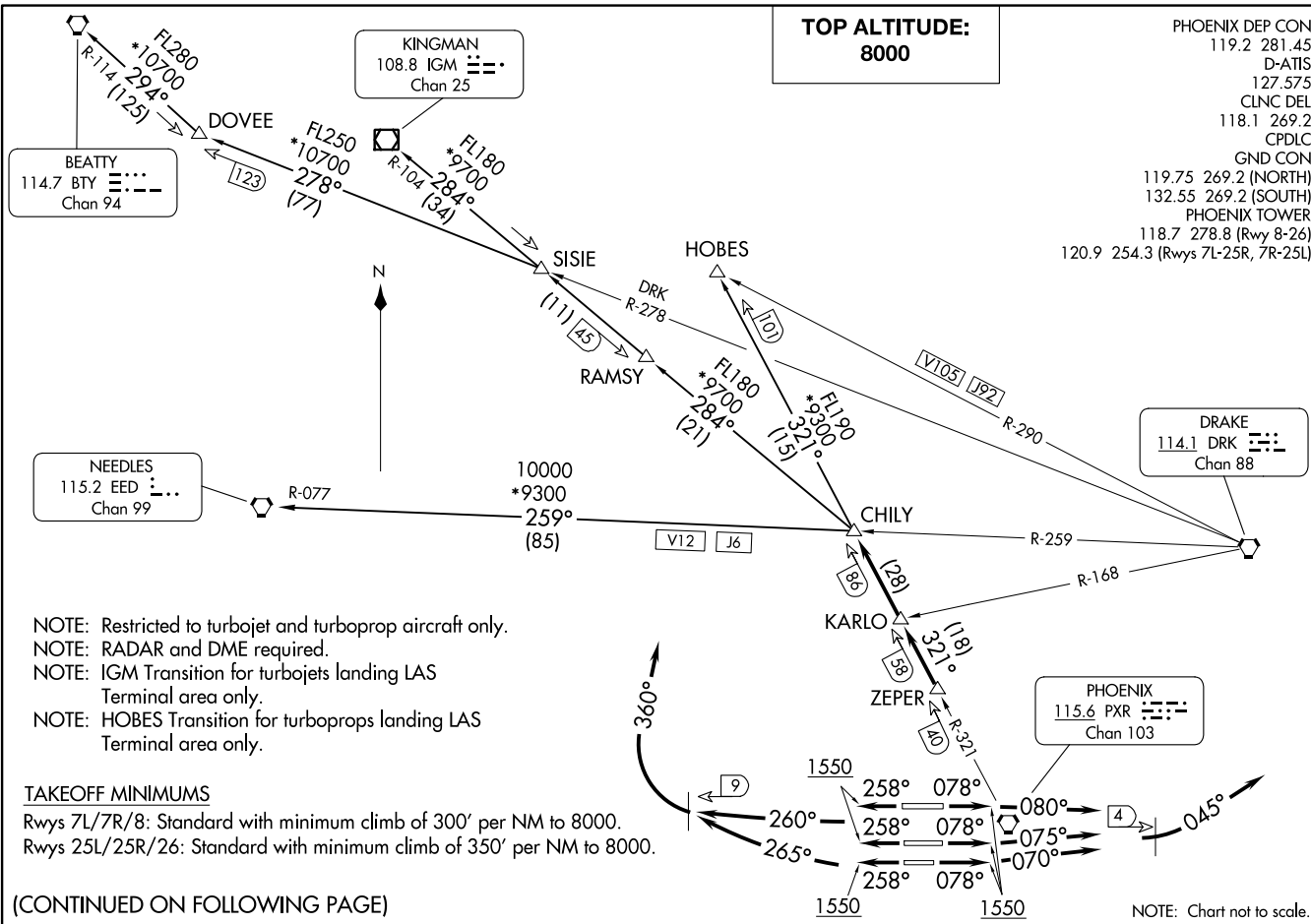
SW-4, 22 FEB 2024 to 21 MAR 2024

CHILY FOUR DEPARTURE
(CHILY4.CHILY) 25JUN15

(CHILY4.CHILY) 23334
CHILY FOUR DEPARTURE

AL-322 (FAA)

PHOENIX SKY HARBOR INTL (PHX)
PHOENIX, ARIZONA



TOP ALTITUDE:
8000

PHOENIX DEP CON
 119.2 281.45
 D-ATIS
 127.575
 CLNC DEL
 118.1 269.2
 CPDLC
 GND CON
 119.75 269.2 (NORTH)
 132.55 269.2 (SOUTH)
 PHOENIX TOWER
 118.7 278.8 (Rwy 8-26)
 120.9 254.3 (Rwys 7L-25R, 7R-25L)

NOTE: Restricted to turbojet and turboprop aircraft only.
 NOTE: RADAR and DME required.
 NOTE: IGM Transition for turbojets landing LAS Terminal area only.
 NOTE: HOBES Transition for turboprops landing LAS Terminal area only.

TAKEOFF MINIMUMS

Rwys 7L/7R/8: Standard with minimum climb of 300' per NM to 8000.
 Rwys 25L/25R/26: Standard with minimum climb of 350' per NM to 8000.

(CONTINUED ON FOLLOWING PAGE)

PHOENIX, ARIZONA
PHOENIX SKY HARBOR INTL (PHX)



DEPARTURE ROUTE DESCRIPTION

TAKEOFF RUNWAY 8: Climb heading 078° to 1550, then climbing right turn heading 080°, at 4 DME east of PXR VORTAC, climbing left turn heading 045°. Thence

TAKEOFF RUNWAY 7L: Climb heading 078° to 1550, then climbing left turn heading 075°, at 4 DME east of PXR VORTAC, climbing left turn heading 045°. Thence

TAKEOFF RUNWAY 7R: Climb heading 078° to 1550, then climbing left turn heading 070°, at 4 DME east of PXR VORTAC, climbing left turn heading 045°. Thence

TAKEOFF RUNWAY 25L: Climb heading 258° to 1550, then climbing right turn heading 265°, at 9 DME west of PXR VORTAC, climbing right turn heading 360°. Thence

TAKEOFF RUNWAY 25R: Climb heading 258° to 1550, then climbing right turn heading 260°, at 9 DME west of PXR VORTAC, climbing right turn heading 360°. Thence

TAKEOFF RUNWAY 26: Climb heading 258° to 1550, then climbing right turn heading 260°, at 9 DME west of PXR VORTAC, climbing right turn heading 360°. Thence

. . . . maintain 8000, expect RADAR vectors to PXR R-321 to ZEPER/PXR 40 DME then CHILY INT. Thence via (transition). Expect filed altitude 3 minutes after departure.

LOST COMMUNICATIONS: Expect filed altitude 3 minutes after departure.

BEATTY TRANSITION (CHILY4.BTY): From over CHILY INT via IGM R-104 to SISIE INT, then via DRK R-278 to DOVEE INT, then via BTY R-114 to BTY VORTAC.

HOBES TRANSITION (CHILY4.HOBES): From over CHILY INT via PXR R-321 to HOBES INT.

KINGMAN TRANSITION (CHILY4.IGM): From over CHILY INT via IGM R-104 to IGM VOR/DME.

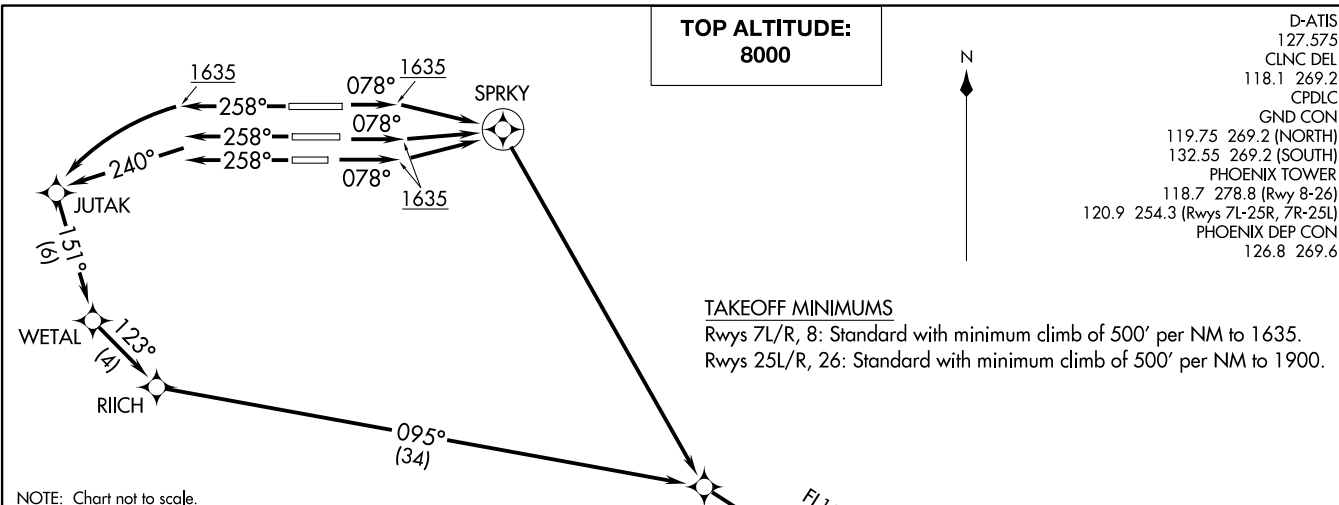
NEEDLES TRANSITION (CHILY4.EED): From over CHILY INT via DRK R-259 and EED R-077 to EED VORTAC.

SW-4, 22 FEB 2024 to 21 MAR 2024

SW-4, 22 FEB 2024 to 21 MAR 2024

ECLPS ONE DEPARTURE (RNAV)
(ECLPS1, ECLPS) 24MAY18

PHOENIX, ARIZONA
PHOENIX SKY HARBOR INTL (PHX)



TOP ALTITUDE:
800

D-ATIS
127.575
CLNC DEL
118.1 269.2
CPDLC
GND CON
119.75 269.2 (NORTH)
132.55 269.2 (SOUTH)
PHOENIX TOWER
118.7 278.8 (Rwy 8-26)
120.9 254.3 (Rwys 7L-25R, 7R-25L)
PHOENIX DEP CON
126.8 269.6

TAKEOFF MINIMUMS
Rwys 7L/R, 8: Standard with minimum climb of 500' per NM to 1635.
Rwys 25L/R, 26: Standard with minimum climb of 500' per NM to 1900.

NOTE: Chart not to scale.

DEPARTURE ROUTE DESCRIPTION

TAKEOFF RUNWAYS 7L/R, 8: Climb heading 078° to 1635, then direct to SPRKY, then right turn direct ECLPS. Thence. . . .

TAKEOFF RUNWAYS 25L/R: Climb heading 258° to intercept course 240° to JUTAK, then on track 151° to WETAL, then on track 123° to RIICH, then on track 095° to ECLPS. Thence. . . .

TAKEOFF RUNWAY 26: Climb heading 258° to 1635, then left turn direct JUTAK, then on track 151° to WETAL, then on track 123° to RIICH, then on track 095° to ECLPS. Thence. . . .

. . . on track 111° to KATMN. Then on (transition), expect filed altitude 3 minutes after departure.

PHASE TRANSITION (ECLPS1.PHASE)

- NOTE: RNAV 1.
- NOTE: Turbojets and turboprops only.
- NOTE: RADAR required.
- NOTE: DME/DME/IRU or GPS required.
- NOTE: For non-GPS equipped aircraft, TFD and DUG DMEs must be operational.

(ECLPS1, ECLPS) 18144
ECLPS ONE DEPARTURE (RNAV)

AL-322 (FAA)

PHOENIX SKY HARBOR INTL (PHX)
PHOENIX, ARIZONA

FORPE ONE DEPARTURE (RNAV)
(FORPE1.FORPE) 24MAR18

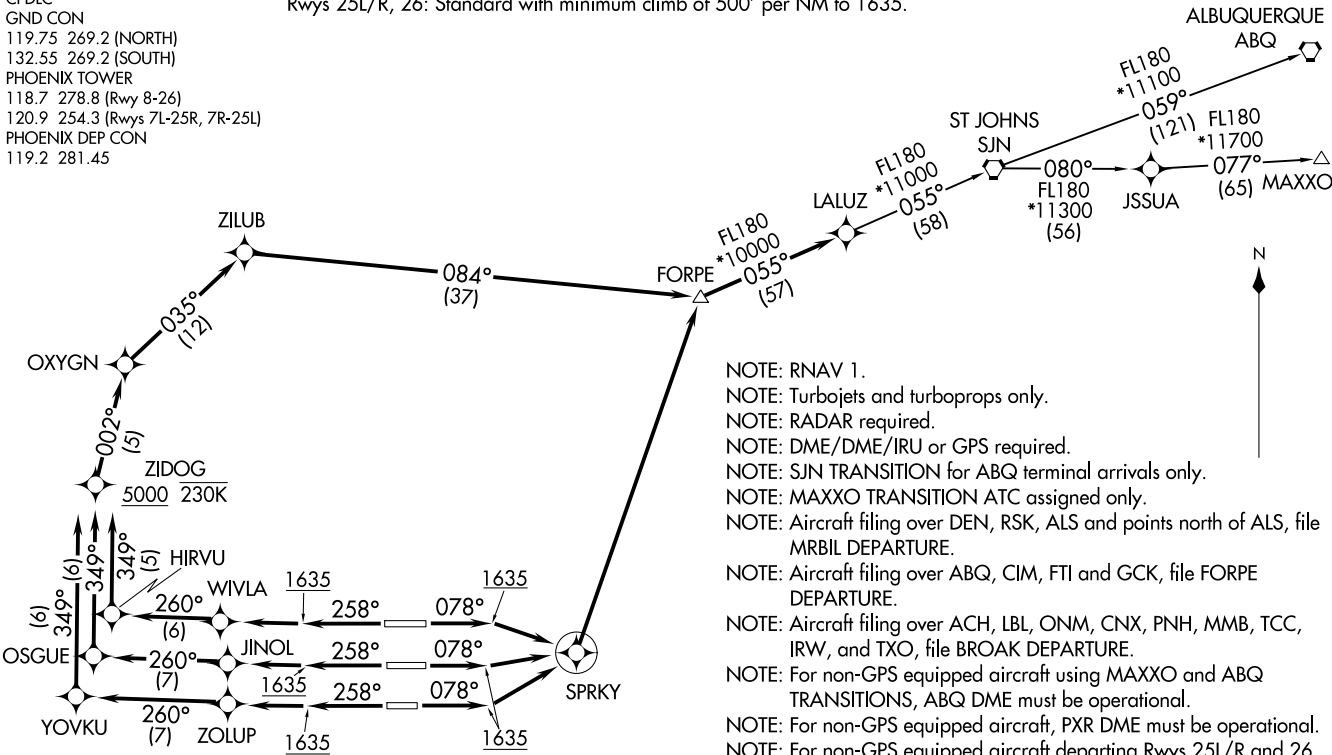
PHOENIX SKY HARBOR INTL (PHX)
PHOENIX, ARIZONA

D-ATIS
127.575
CLNC DEL
118.1 269.2
CPDLC
GND CON
119.75 269.2 (NORTH)
132.55 269.2 (SOUTH)
PHOENIX TOWER
118.7 278.8 (Rwy 8-26)
120.9 254.3 (Rwys 7L-25R, 7R-25L)
PHOENIX DEP CON
119.2 281.45

TAKEOFF MINIMUMS

Rwys 7L/R, 8: Standard with minimum climb of 500' per NM to 1635
then minimum climb of 250' per NM to 7300.
Rwys 25L/R, 26: Standard with minimum climb of 500' per NM to 1635.

**TOP ALTITUDE:
8000**



- NOTE: RNAV 1.
- NOTE: Turbojets and turboprops only.
- NOTE: RADAR required.
- NOTE: DME/DME/IRU or GPS required.
- NOTE: SJN TRANSITION for ABQ terminal arrivals only.
- NOTE: MAXXO TRANSITION ATC assigned only.
- NOTE: Aircraft filing over DEN, RSK, ALS and points north of ALS, file MRBIL DEPARTURE.
- NOTE: Aircraft filing over ABQ, CIM, FTI and GCK, file FORPE DEPARTURE.
- NOTE: Aircraft filing over ACH, LBL, ONM, CNX, PNH, MMB, TCC, IRW, and TXO, file BROAK DEPARTURE.
- NOTE: For non-GPS equipped aircraft using MAXXO and ABQ TRANSITIONS, ABQ DME must be operational.
- NOTE: For non-GPS equipped aircraft, PXR DME must be operational.
- NOTE: For non-GPS equipped aircraft departing Rwys 25L/R and 26, IWA and TFD DMEs must be operational.

(NARRATIVE ON FOLLOWING PAGE)

NOTE: Chart not to scale.

(FORPE1.FORPE) 18144
FORPE ONE DEPARTURE (RNAV)

PHOENIX SKY HARBOR INTL (PHX)
PHOENIX, ARIZONA



DEPARTURE ROUTE DESCRIPTION

TAKEOFF RUNWAYS 7L, 7R, 8: Climb heading 078° to 1635, then direct SPRKY, then left turn direct FORPE, thence

TAKEOFF RUNWAY 25L: Climb heading 258° to 1635, then direct ZOLUP, then on track 260° to YOYKU, then on track 349° to cross ZIDOG at or above 5000 and at/below 230K, then on track 002° to OXYGN, then on track 035° to ZILUB, then on track 084° to FORPE, thence

TAKEOFF RUNWAY 25R: Climb heading 258° to 1635, then direct JINOL, then on track 260° to OSGUE, then on track 349° to cross ZIDOG at or above 5000 and at/below 230K, then on track 002° to OXYGN, then on track 035° to ZILUB, then on track 084° to FORPE, thence

TAKEOFF RUNWAY 26: Climb heading 258° to 1635, then direct WIVLA, then on track 260° to HIRVU, then on track 349° to cross ZIDOG at or above 5000 and at/below 230K, then on track 002° to OXYGN, then on track 035° to ZILUB, then on track 084° to FORPE, thence

. . . . on track 055° to LALUZ, then on (transition). Maintain 8000, expect higher altitude 3 minutes after departure.

ALBUQUERQUE TRANSITION (FORPE1.ABQ)

MAXXO TRANSITION (FORPE1.MAXXO)

ST JOHNS TRANSITION (FORPE1.SJN)

SW-4, 22 FEB 2024 to 21 MAR 2024

SW-4, 22 FEB 2024 to 21 MAR 2024

FYRBD ONE DEPARTURE (RNAV)
 (FYRBD1.FYRBD) 24MMAY18

DEPARTURE ROUTE DESCRIPTION

TAKEOFF RUNWAYS 7L/R, 8: Climb heading 078° to 1635, then direct FUTEP, then on track 132° to AZCRD, then on track 199° to USEYE, then on track 264° to cross MASVE at/above 7000 and at/below 220K, then on track 264° to OAKLI, then on track 222° to FYRBD, thence. . . .

TAKEOFF RUNWAYS 25L/R: Climb heading 258° to intercept course 240° to JUTAK, then on track 151° to WETAL, then on track 221° to FYRBD, thence. . . .

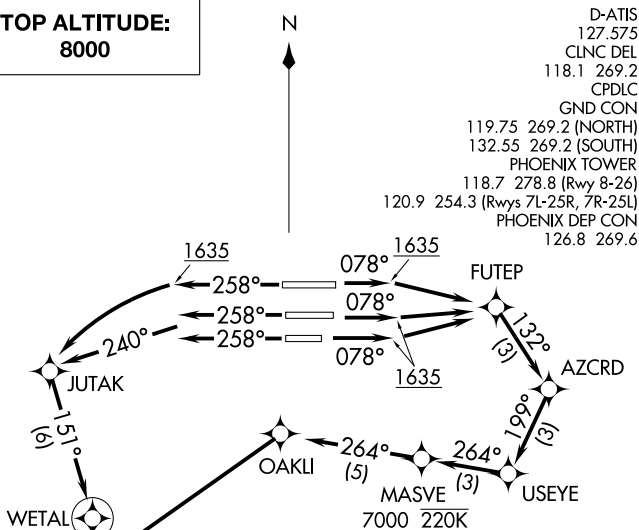
TAKEOFF RUNWAY 26: Climb heading 258° to 1635, then left turn direct JUTAK, then on track 151° to WETAL, then on track 221° to FYRBD, thence. . . .

. . . .on track 249° to JUDTH, then on (transition). Maintain 8000, expect higher altitude 3 minutes after departure.

MOHAK TRANSITION (FYRBD1.MOHAK)

**TOP ALTITUDE:
8000**

N



D-ATIS
127.575
CLNC DEL
118.1 269.2
CPDLC
GND CON
119.75 269.2 (NORTH)
132.55 269.2 (SOUTH)
PHOENIX TOWER
118.7 278.8 (Rwy 8-26)
120.9 254.3 (Rwys 7L-25R, 7R-25L)
PHOENIX DEP CON
126.8 269.6

NOTE: RNAV 1.
NOTE: Turbojets and turboprops only.
NOTE: RADAR required.
NOTE: DME/DME/IRU or GPS required.

TAKEOFF MINIMUMS

Rwys 7L/R, 8: Standard.

Rwys 25L/R, 26: Standard with minimum climb of 500' per NM to 1635, then minimum climb of 260' per NM to 5400.

NOTE: Chart not to scale.

PHOENIX SKY HARBOR INTL (PHX)
 PHOENIX, ARIZONA

(FYRBD1.FYRBD) 18144
 FYRBD ONE DEPARTURE (RNAV)

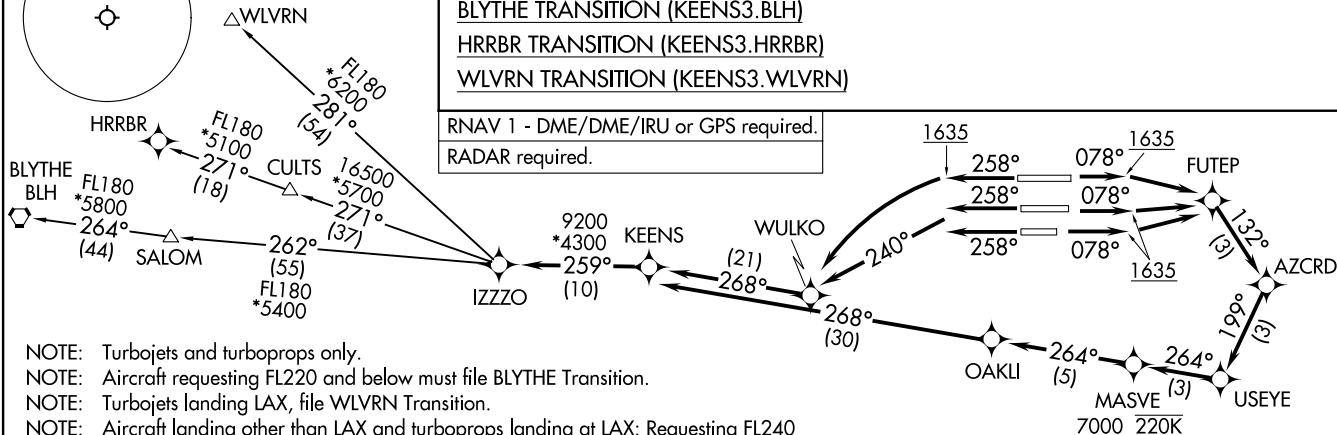
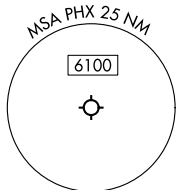
AL-322 (FAA)

PHOENIX SKY HARBOR INTL (PHX)
 PHOENIX, ARIZONA

KEENS THREE DEPARTURE (RNAV)
(KEENS3.KEENS) 251AN24

PHOENIX DEP CON
126.8 269.6
D-ATIS
127.575
CLNC DEL
118.1 269.2
GND CON
119.75 269.2 (NORTH)
132.55 269.2 (SOUTH)
PHOENIX TOWER
118.7 278.8 (Rwy 8-26)
120.9 254.3 (Rwys 7L-25R, 7R-25L)

**TOP ALTITUDE:
8000**



RNAV 1 - DME/DME/IRU or GPS required.
RADAR required.

DEPARTURE ROUTE DESCRIPTION

TAKEOFF RUNWAYS 7L/R, 8: Climb on heading 078° to 1635, then direct FUTEF, then on track 132° to AZCRD, then on track 199° to USEYE, then on track 264° to cross MASVE at/above 7000 and at/below 220K, then on track 264° to OAKLI, then on track 268° to KEENS, thence. . . .

TAKEOFF RUNWAYS 25L/R: Climb on heading 258° to intercept course 240° to WULKO, then on track 268° to KEENS, thence. . . .

TAKEOFF RUNWAY 26: Climb on heading 258° to 1635, then left turn direct WULKO, then on track 268° to KEENS, thence. . . .

. . . on track 259° to IZZO, then on (transition). Maintain 8000, expect higher altitude 3 minutes after departure.

BLYTHE TRANSITION (KEENS3.BLH)

HRRBR TRANSITION (KEENS3.HRRBR)

WLVN TRANSITION (KEENS3.WLVN)

- NOTE: Turbojets and turboprops only.
- NOTE: Aircraft requesting FL220 and below must file BLYTHE Transition.
- NOTE: Turbojets landing LAX, file WLVN Transition.
- NOTE: Aircraft landing other than LAX and turboprops landing at LAX: Requesting FL240 and above, file HRRBR Transition.

TAKEOFF MINIMUMS

Rwys 7L/R, 8: Standard.
Rwys 25L/R, 26: Standard with minimum climb of 500'/NM to 1635.

NOTE: Chart not to scale.

(KEENS3.KEENS) 24025
KEENS THREE DEPARTURE (RNAV)

AL-322 (FAA)

PHOENIX SKY HARBOR INTL (PHX)
PHOENIX, ARIZONA

PHOENIX SKY HARBOR INTL (PHX)
PHOENIX, ARIZONA

(MOBIE4.MOBIE) 23334

MOBIE FOUR DEPARTURE

AL-322 (FAA)

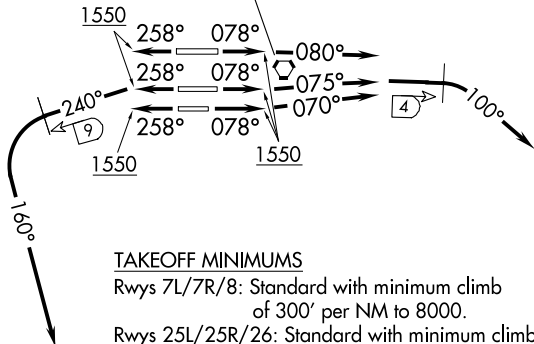
PHOENIX SKY HARBOR INTL (PHX)

PHOENIX, ARIZONA

PHOENIX DEP CON
 126.8 269.6
 D-ATIS
 127.575
 CLNC DEL
 118.1 269.2
 CPDLC
 GND CON
 119.75 269.2 (NORTH)
 132.55 269.2 (SOUTH)
 PHOENIX TOWER
 118.7 278.8 (Rwy 8-26)
 120.9 254.3 (Rwys 7L-25R, 7R-25L)

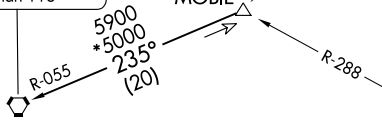
**TOP ALTITUDE:
8000**

PHOENIX
 115.6 PXR
 Chan 103



NOTE: Restricted to turbojet and turboprop aircraft only.
 NOTE: DME and RADAR required.

GILA BEND
 116.6 GBN
 Chan 113



STANFIELD
 114.8 TFD
 Chan 95

NOTE: Chart not to scale.

DEPARTURE ROUTE DESCRIPTION

TAKEOFF RUNWAY 8: Climb heading 078° to 1550, then climbing right turn heading 080°, at 4 DME east of PXR VORTAC, climbing right turn heading 100°. Thence. . .

TAKEOFF RUNWAY 7L: Climb heading 078° to 1550, then climbing left turn heading 075°, at 4 DME east of PXR VORTAC, climbing right turn heading 100°. Thence. . .

TAKEOFF RUNWAY 7R: Climb heading 078° to 1550, then climbing left turn heading 070°, at 4 DME east of PXR VORTAC, climbing right turn heading 100°. Thence. . .

TAKEOFF RUNWAY 25L: Climb heading 258° to 1550, then climbing left turn heading 240°, at 9 DME west of PXR VORTAC, climbing left turn heading 160°. Thence. . .

TAKEOFF RUNWAY 25R: Climb heading 258° to 1550, then climbing left turn heading 240°, at 9 DME west of PXR VORTAC, climbing left turn heading 160°. Thence. . .

TAKEOFF RUNWAY 26: Climb heading 258° to 1550, then climbing left turn heading 240°, at 9 DME west of PXR VORTAC, climbing left turn heading 160°. Thence. . .

. . . maintain 8000, expect RADAR vectors to MOBIE INT thence via (transition). Expect filed altitude 3 minutes after departure.

LOST COMMUNICATIONS: Expect filed altitude 3 minutes after departure.

GILA BEND TRANSITION (MOBIE4.GBN): From over MOBIE INT via GBN R-055 to GBN VORTAC.

MOBIE FOUR DEPARTURE

(MOBIE4.MOBIE) 25JUN15

PHOENIX, ARIZONA

PHOENIX SKY HARBOR INTL (PHX)

SW-4, 22 FEB 2024 to 21 MAR 2024

SW-4, 22 FEB 2024 to 21 MAR 2024

MRBIL ONE DEPARTURE (RNAV)

AL-322 (FAA)

PHOENIX SKY HARBOR INTL (PHX)
PHOENIX, ARIZONA

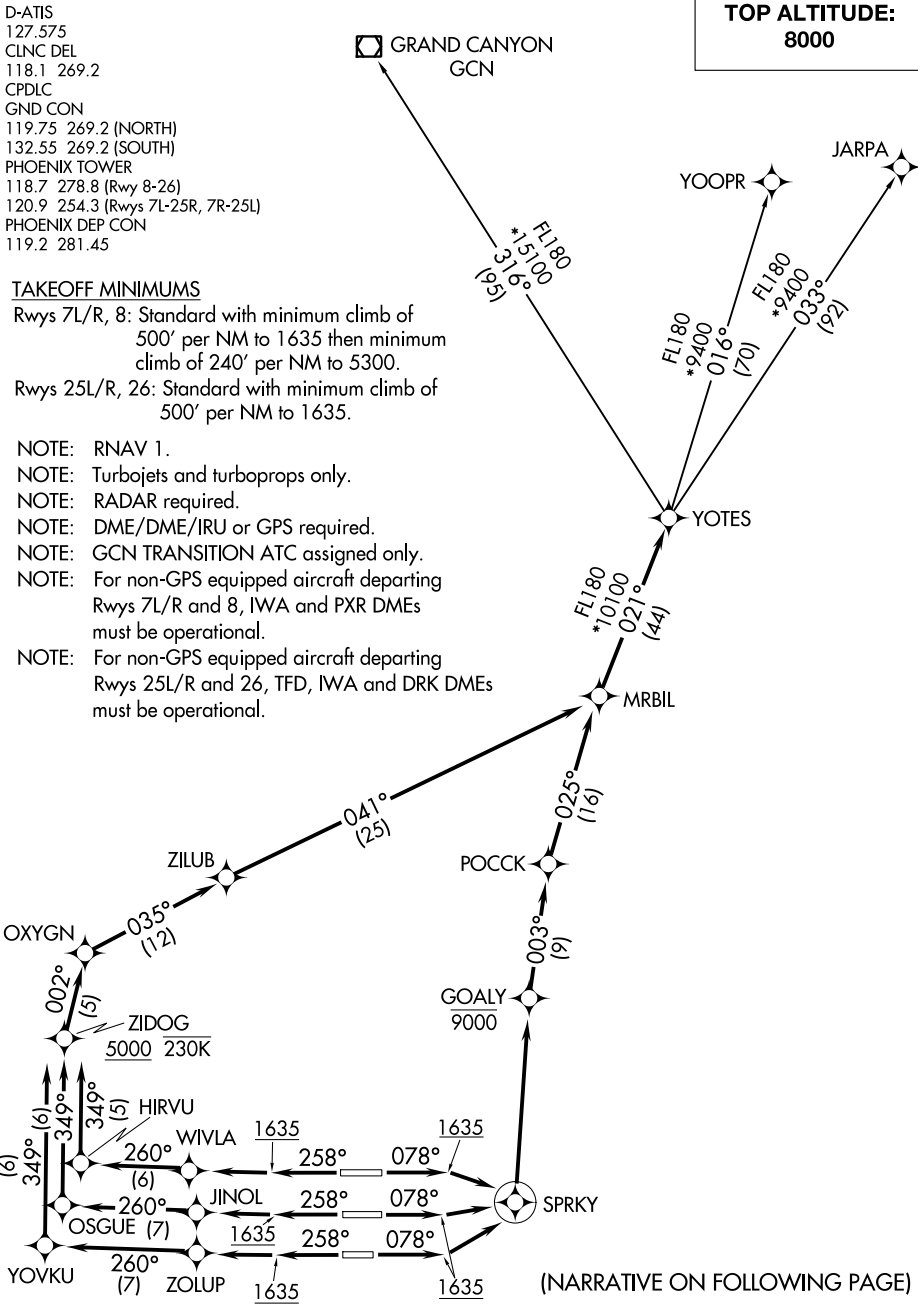
D-ATIS
127.575
CLNC DEL
118.1 269.2
CPDLC
GND CON
119.75 269.2 (NORTH)
132.55 269.2 (SOUTH)
PHOENIX TOWER
118.7 278.8 (Rwy 8-26)
120.9 254.3 (Rwys 7L-25R, 7R-25L)
PHOENIX DEP CON
119.2 281.45

TAKEOFF MINIMUMS

Rwys 7L/R, 8: Standard with minimum climb of 500' per NM to 1635 then minimum climb of 240' per NM to 5300.
Rwys 25L/R, 26: Standard with minimum climb of 500' per NM to 1635.

- NOTE: RNAV 1.
NOTE: Turbojets and turboprops only.
NOTE: RADAR required.
NOTE: DME/DME/IRU or GPS required.
NOTE: GCN TRANSITION ATC assigned only.
NOTE: For non-GPS equipped aircraft departing Rwys 7L/R and 8, IWA and PXR DMEs must be operational.
NOTE: For non-GPS equipped aircraft departing Rwys 25L/R and 26, TFD, IWA and DRK DMEs must be operational.

**TOP ALTITUDE:
8000**



SW-4, 22 FEB 2024 to 21 MAR 2024

SW-4, 22 FEB 2024 to 21 MAR 2024

(NARRATIVE ON FOLLOWING PAGE)

NOTE: Chart not to scale.

MRBIL ONE DEPARTURE (RNAV)

(MRBIL1.MRBIL) 24MAY18

PHOENIX, ARIZONA
PHOENIX SKY HARBOR INTL (PHX)



DEPARTURE ROUTE DESCRIPTION

TAKEOFF RUNWAYS 7L/R, 8: Climb heading 078° to 1635, then direct to SPRKY, then turn left direct to cross GOALY at/below 9000, then on track 003° to POCCK, then on track 025° to MRBIL, thence. . . .

TAKEOFF RUNWAY 25L: Climb heading 258° to 1635, then direct ZOLUP, then on track 260° to YOVKU, then on track 349° to cross ZIDOG at/above 5000 and at/below 230K, then on track 002° to OXYGN, then on track 035° to ZILUB, then on track 041° to MRBIL, thence. . . .

TAKEOFF RUNWAY 25R: Climb heading 258° to 1635, then direct JINOL, then on track 260° to OSGUE, then on track 349° to cross ZIDOG at/above 5000 and at/below 230K, then on track 002° to OXYGN, then on track 035° to ZILUB, then on track 041° to MRBIL, thence. . . .

TAKEOFF RUNWAY 26: Climb heading 258° to 1635, then direct WIVLA, then on track 260° to HIRVU, then on track 349° to cross ZIDOG at/above 5000 and at/below 230K, then on track 002° to OXYGN, then on track 035° to ZILUB, then on track 041° to MRBIL, thence. . . .

. . . .on track 021° to YOTES, then on (transition). Maintain 8000, expect higher altitude 3 minutes after departure.

GRAND CANYON TRANSITION (MRBIL1.GCN)

JARPA TRANSITION (MRBIL1.JARPA)

YOOPR TRANSITION (MRBIL1.YOOPR)

SW-4, 22 FEB 2024 to 21 MAR 2024

SW-4, 22 FEB 2024 to 21 MAR 2024

QUAKY ONE DEPARTURE (RNAV)

AL-322 (FAA)

PHOENIX SKY HARBOR INTL (PHX)
PHOENIX, ARIZONA

D-ATIS
127.575
CLNC DEL
118.1 269.2
CPDLC
GND CON
119.75 269.2 (NORTH)
132.55 269.2 (SOUTH)
PHOENIX TOWER
118.7 278.8 (Rwy 8-26)
120.9 254.3 (Rwys 7L-25R, 7R-25L)
PHOENIX DEP CON
119.2 281.45

GRAND CANYON 
GCN

**TOP ALTITUDE:
8000**

TAKEOFF MINIMUMS

Rwys 7L/R, 8: Standard with minimum climb of 500' per NM to 1635, then minimum climb of 230' per NM to 5200.
Rwys 25L/R, 26: Standard with minimum climb of 500' per NM to 1635.

NOTE: RNAV 1.

NOTE: Turbojets and turboprops only.

NOTE: RADAR required.

NOTE: DME/DME/IRU or GPS required.

NOTE: JARPA TRANSITION ATC assigned only.

NOTE: YOOPR TRANSITION ATC assigned only.

NOTE: CARTL TRANSITION for FLG or PGA terminal arrivals only.

NOTE: For non-GPS equipped aircraft using YOOPR TRANSITION, DRK DME must be operational.

NOTE: For non-GPS equipped aircraft, IWA DME must be operational.

NOTE: For non-GPS equipped aircraft departing Rwys 25L/R, 26, TFD and BXK DMEs must be operational.

NOTE: For non-GPS equipped aircraft departing Rwys 8, 25R, 26, DRK DME must be operational.

NOTE: For non-GPS equipped aircraft departing Rwys 7L/R, PXR DME must be operational.

FL180
*9400
342°
(26)

RIMMM
FL180
*11500
343°
(110)

LOFTS
FL180
*11500
343°
(36)

CARTL
FL180
*9100
343°
(20)

YOOPR
FL180
*10700
043°
(94)

JARPA
FL180
*10800
050°
(123)

SNOB L
FL180
*8200
343°
(20)

QUAKY
14600
*8200
343°
(20)

ZILUB
343°
(12)

OXYGN
035°
(12)

ZIDOG
5000 230K
002°
(6)

HIRVU
349°
(5)

OSGUE
349°
(9)

YOVKU
349°
(9)

WIVLA
260°
(6)

JINOL
260°
(7)

ZOLUP
260°
(7)

GOALY
9000

SPRKY

NOTE: Chart not to scale.

(NARRATIVE ON FOLLOWING PAGE)

SW-4, 22 FEB 2024 to 21 MAR 2024

SW-4, 22 FEB 2024 to 21 MAR 2024

QUAKY ONE DEPARTURE (RNAV)

(QUAKY1.QUAKY) 24MAY18

PHOENIX, ARIZONA
PHOENIX SKY HARBOR INTL (PHX)



DEPARTURE ROUTE DESCRIPTION

TAKEOFF RUNWAYS 7L/R, 8: Climb heading 078° to 1635, then direct SPRKY, then left turn direct to cross GOALY at/below 9000, then on track 337° to QUAKY, thence

TAKEOFF RUNWAY 25L: Climb heading 258° to 1635, then direct ZOLUP, then on track 260° to YOYKU, then on track 349° to cross ZIDOG at or above 5000 and at or below 230K, then on track 002° to OXYGN, then on track 035° to ZILUB, then on track 357° to QUAKY, thence

TAKEOFF RUNWAY 25R: Climb heading 258° to 1635, then direct JINOL, then on track 260° to OSGUE, then on track 349° to cross ZIDOG at or above 5000 and at or below 230K, then on track 002° to OXYGN, then on track 035° to ZILUB, then on track 357° to QUAKY, thence

TAKEOFF RUNWAY 26: Climb heading 258° to 1635, then direct WIVLA, then on track 260° to HIRVU, then on track 349° to cross ZIDOG at or above 5000 and at or below 230K, then on track 002° to OXYGN, then on track 035° to ZILUB, then on track 357° to QUAKY, thence

. . . . on track 343° to SNOBL, then on (transition). Maintain 8000, expect higher altitude 3 minutes after departure.

CARTL TRANSITION (QUAKY1.CARTL)

GRAND CANYON TRANSITION (QUAKY1.GCN)

JARPA TRANSITION (QUAKY1.JARPA)

RIMMM TRANSITION (QUAKY1.RIMMM)

YOOPR TRANSITION (QUAKY1.YOOPR)

SW-4, 22 FEB 2024 to 21 MAR 2024

SW-4, 22 FEB 2024 to 21 MAR 2024

STANFIELD FOUR DEPARTURE

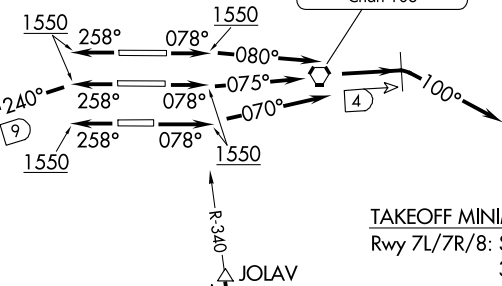
AL-322 (FAA)

PHOENIX SKY HARBOR INTL (PHX)
PHOENIX, ARIZONA

**TOP ALTITUDE:
8000**

PHOENIX DEP CON
126.8 269.6
D-ATIS
127.575
CLNC DEL
118.1 269.2
CPDLC
GND CON
119.75 269.2 (NORTH)
132.55 269.2 (SOUTH)
PHOENIX TOWER
118.7 278.8 (Rwy 8-26)
120.9 254.3 (Rwys 7L-25R, 7R-25L)

PHOENIX
115.6 PXR Chan 103



STANFIELD
114.8 TFD Chan 95

TUCSON
116.0 TUS Chan 107

TAKEOFF MINIMUMS

Rwy 7L/7R/8: Standard with minimum climb of 300' per NM to 8000.

Rwy 25L/25R/26: Standard with minimum climb of 350' per NM to 8000.

NOTE: STANFIELD DEPARTURE restricted to turbojet and turboprop aircraft only.

NOTE: RADAR and DME required.

NOTE: Chart not to scale.

DEPARTURE ROUTE DESCRIPTION

TAKEOFF RUNWAY 8: Climb heading 078° to 1550, then climbing right turn heading 080°, at 4 DME east of PXR VORTAC, climbing right turn heading 100°. Thence. . .

TAKEOFF RUNWAY 7L: Climb heading 078° to 1550, then climbing left turn heading 075°, at 4 DME east of PXR VORTAC, climbing right turn heading 100°. Thence. . .

TAKEOFF RUNWAY 7R: Climb heading 078° to 1550, then climbing left turn heading 070°, at 4 DME east of PXR VORTAC, climbing right turn heading 100°. Thence. . .

TAKEOFF RUNWAY 25L/25R/26: Climb heading 258° to 1550, then climbing left turn heading 240°, at 9 DME west of PXR VORTAC, climbing left turn heading 160°. Thence. . .

. . . maintain 8000, expect RADAR vectors to TFD R-340 to TFD VORTAC. Thence via (Transition). Expect further clearance to filed altitude 3 minutes after departure.

LOST COMMUNICATIONS: Expect filed altitude 3 minutes after departure.

OLIIN TRANSITION (TFD4.OLIIN): From over TFD VORTAC on TFD R-107 to OLIIN INT.

TUCSON TRANSITION (TFD4.TUS): From over TFD VORTAC on TFD R-121 and TUS R-301 to TUS VORTAC.

STANFIELD FOUR DEPARTURE

(TFD4.TFD) 25JUN15

PHOENIX, ARIZONA
PHOENIX SKY HARBOR INTL (PHX)

SW-4, 22 FEB 2024 to 21 MAR 2024

SW-4, 22 FEB 2024 to 21 MAR 2024

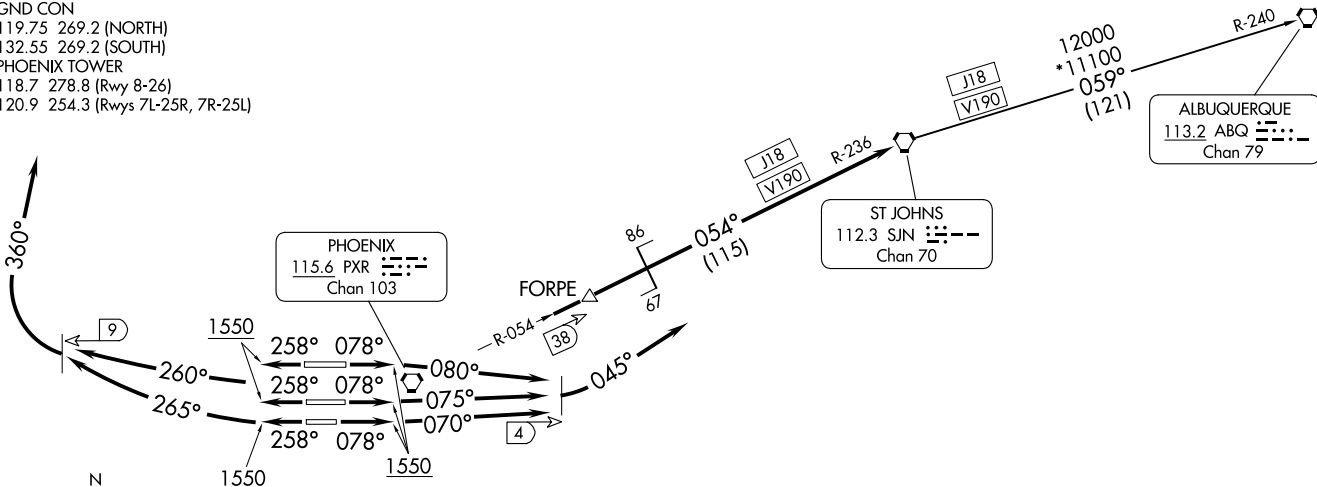
ST. JOHNS NINE DEPARTURE
(SIN9.SJN) 28FEB19

PHOENIX DEP CON
119.2 281.45
D-ATIS
127.575
CLNC DEL
118.1 269.2
CPDLC
GND CON
119.75 269.2 (NORTH)
132.55 269.2 (SOUTH)
PHOENIX TOWER
118.7 278.8 (Rwy 8-26)
120.9 254.3 (Rwys 7L-25R, 7R-25L)

TAKEOFF MINIMUMS

Rwys 7L, 7R, 8: Standard with minimum climb of 350' per NM to 8000.
Rwys 25L, 25R, 26: Standard with minimum climb of 350' per NM to 8000.

TOP ALTITUDE:
8000



- NOTE: Restricted to turbojet and turboprop aircraft only.
- NOTE: RADAR and DME required.
- NOTE: Aircraft filing over ACH, LBL, ONM, CNX, PNH, MMB, TCC, IRW and TXO file BALDY DEPARTURE.
- NOTE: Aircraft filing over CIM, FTI and GCK file ST JOHNS DEPARTURE.

(CONTINUED ON FOLLOWING PAGE)

NOTE: Chart not to scale.

PHOENIX SKY HARBOR INTL (PHX)
PHOENIX, ARIZONA

AL-322 (FAA)

ST. JOHNS NINE DEPARTURE
(SIN9.SJN) 23334



DEPARTURE ROUTE DESCRIPTION

TAKEOFF RUNWAY 7L: Climb heading 078° to 1550, then climbing left turn heading 075°, at 4 DME east of PXR VORTAC, climbing left turn heading 045° to PXR R-054 to SJN VORTAC, maintain 8000. Thence

TAKEOFF RUNWAY 7R: Climb heading 078° to 1550, then climbing left turn heading 070°, at 4 DME east of PXR VORTAC, climbing left turn heading 045° to PXR R-054 to SJN VORTAC, maintain 8000. Thence

TAKEOFF RUNWAY 8: Climb heading 078° to 1550, then climbing right turn heading 080°, at 4 DME east of PXR VORTAC, climbing left turn heading 045° to PXR R-054 to SJN VORTAC, maintain 8000. Thence

TAKEOFF RUNWAY 25L: Climb heading 258° to 1550, then climbing right turn heading 265°, at 9 DME west of PXR VORTAC, climbing right turn heading 360°, maintain 8000 for RADAR vectors to PXR R-054 to SJN VORTAC. Thence

TAKEOFF RUNWAY 25R: Climb heading 258° to 1550, then climbing right turn heading 260°, at 9 DME west of PXR VORTAC, climbing right turn heading 360°, maintain 8000 for RADAR vectors to PXR R-054 to SJN VORTAC. Thence

TAKEOFF RUNWAY 26: Climb heading 258° to 1550, then climbing right turn heading 260°, at 9 DME west of PXR VORTAC, climbing right turn heading 360°, maintain 8000 for RADAR vectors to PXR R-054 to SJN VORTAC. Thence

. . . . (transition). Expect filed altitude 3 minutes after departure.

LOST COMMUNICATIONS: Expect filed altitude 3 minutes after departure.

ALBUQUERQUE TRANSITION (SJN9.ABQ): From over SJN VORTAC on SJN R-059 and ABQ R-240 to ABQ VORTAC.

SW-4, 22 FEB 2024 to 21 MAR 2024

SW-4, 22 FEB 2024 to 21 MAR 2024

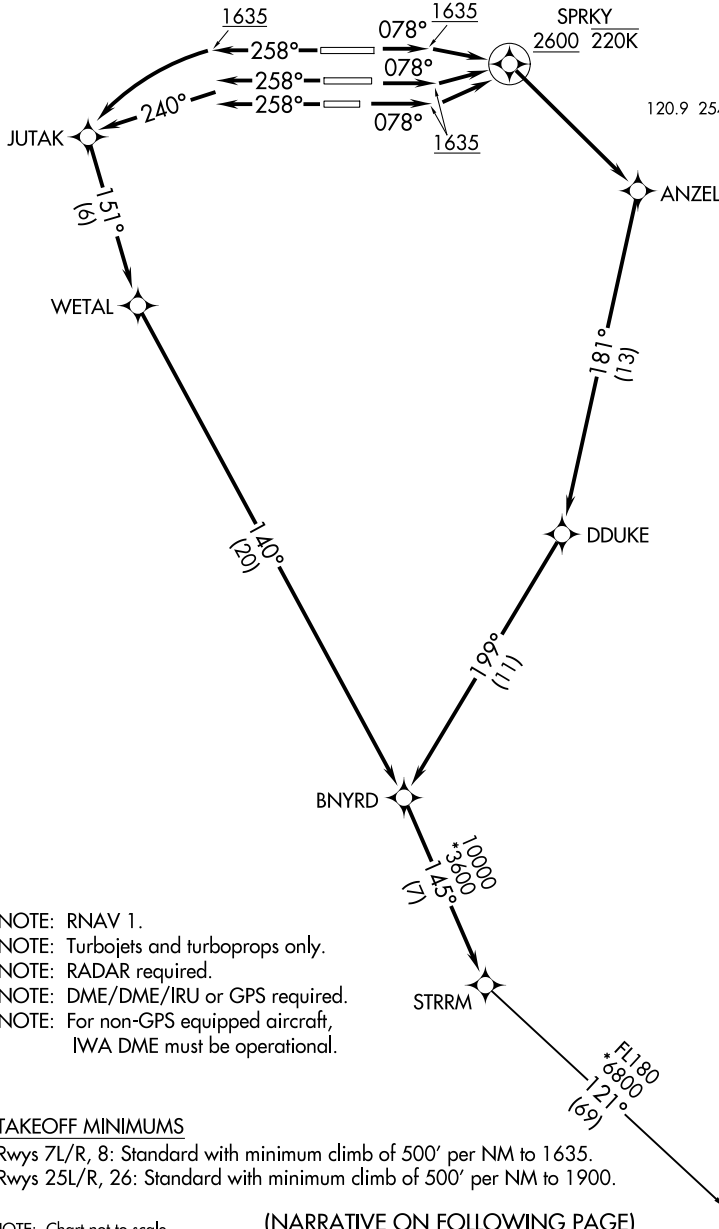
(STRM1.STRRM) 18144

STRM ONE DEPARTURE (RNAV)

AL-322 (FAA)

PHOENIX SKY HARBOR INTL (PHX)
PHOENIX, ARIZONA

**TOP ALTITUDE:
8000**



- NOTE: RNAV 1.
- NOTE: Turbojets and turboprops only.
- NOTE: RADAR required.
- NOTE: DME/DME/IRU or GPS required.
- NOTE: For non-GPS equipped aircraft, IWA DME must be operational.

TAKEOFF MINIMUMS

Rwys 7L/R, 8: Standard with minimum climb of 500' per NM to 1635.
 Rwys 25L/R, 26: Standard with minimum climb of 500' per NM to 1900.

NOTE: Chart not to scale.

(NARRATIVE ON FOLLOWING PAGE)

D-ATIS 127.575
 CLNC DEL 118.1 269.2
 CPDLC 119.75 269.2 (NORTH)
 GND CON 132.55 269.2 (SOUTH)
 PHOENIX TOWER 118.7 278.8 (Rwys 8-26)
 PHOENIX DEP CON 120.9 254.3 (Rwys 7L-25R, 7R-25L)
 126.8 269.6

SW-4, 22 FEB 2024 to 21 MAR 2024

SW-4, 22 FEB 2024 to 21 MAR 2024

STRM ONE DEPARTURE (RNAV)

(STRM1.STRRM) 24MAY18

PHOENIX, ARIZONA
PHOENIX SKY HARBOR INTL (PHX)



DEPARTURE ROUTE DESCRIPTION

TAKEOFF RUNWAYS 7L/R, 8: Climb heading 078° to 1635, then direct to cross SPRKY at or above 2600 and at or below 220K, then right turn direct ANZEL, then on track 181° to DDUKE, then on track 199° to BNYRD, thence

TAKEOFF RUNWAYS 25L/R: Climb heading 258° to intercept course 240° to JUTAK, then on track 151° to WETAL, then on track 140° to BNYRD, thence

TAKEOFF RUNWAY 26: Climb heading 258° to 1635, then left turn direct JUTAK, then on track 151° to WETAL, then on track 140° to BNYRD, thence

. . . . on track 145° to STRRM, then on (transition). Maintain 8000, expect higher altitude 3 minutes after departure.

TUCSON TRANSITION (STRM1.TUS)

SW-4, 22 FEB 2024 to 21 MAR 2024

SW-4, 22 FEB 2024 to 21 MAR 2024

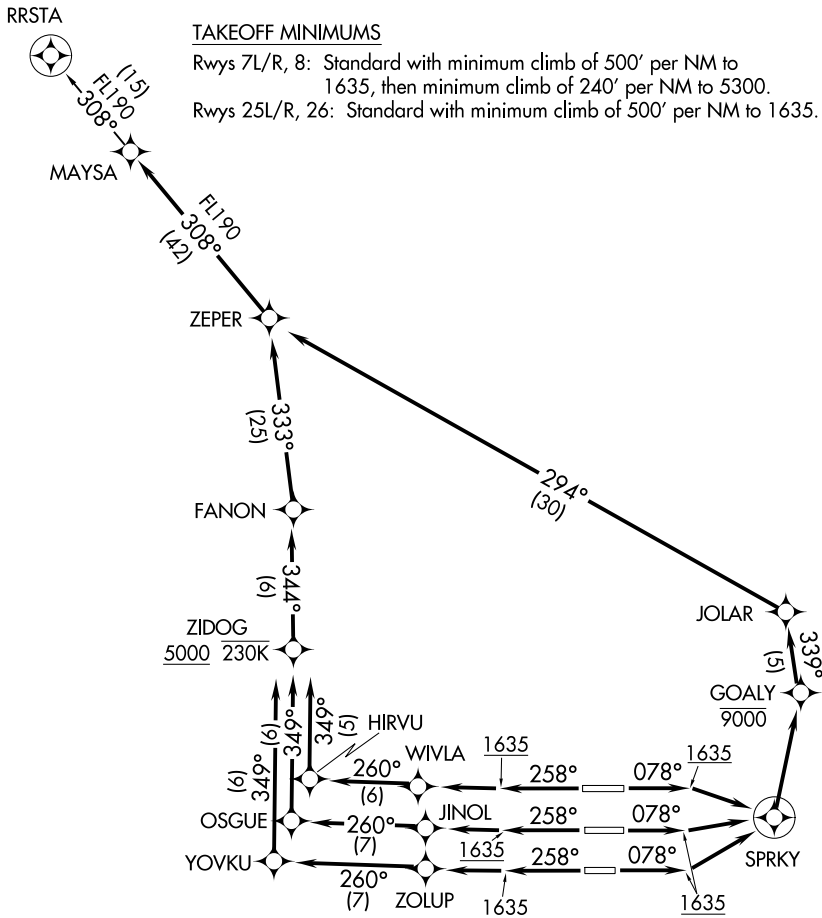
D-ATIS
127.575
CLNC DEL
118.1 269.2
CPDLC
GND CON
119.75 269.2 (NORTH)
132.55 269.2 (SOUTH)
PHOENIX TOWER
118.7 278.8 (Rwy 8-26)
120.9 254.3 (Rwys 7L-25R, 7R-25L)
PHOENIX DEP CON
119.2 281.45

**TOP ALTITUDE:
8000**

NOTE: RNAV 1.
NOTE: Turbojets and turboprops only.
NOTE: RADAR required.
NOTE: DME/DME/IRU or GPS required.

TAKEOFF MINIMUMS

Rwys 7L/R, 8: Standard with minimum climb of 500' per NM to 1635, then minimum climb of 240' per NM to 5300.
Rwys 25L/R, 26: Standard with minimum climb of 500' per NM to 1635.



NOTE: Chart not to scale.

(NARRATIVE ON FOLLOWING PAGE)

SW-4, 22 FEB 2024 to 21 MAR 2024

SW-4, 22 FEB 2024 to 21 MAR 2024



DEPARTURE ROUTE DESCRIPTION

TAKEOFF RUNWAYS 7L/R, 8: Climb on heading 078° to 1635, then direct SPRKY, then turn left direct to cross GOALY at or below 9000, then on track 339° to JOLAR, then on track 294° to ZEPER. Thence

TAKEOFF RUNWAY 25L: Climb on heading 258° to 1635, then direct ZOLUP, then on track 260° to YOVKU, then on track 349° to cross ZIDOG at or above 5000 and at or below 230K, then on track 344° to FANON, then on track 333° to ZEPER, thence

TAKEOFF RUNWAY 25R: Climb on heading 258° to 1635, then direct JINOL, then on track 260° to OSGUE, then on track 349° to cross ZIDOG at or above 5000 and at or below 230K, then on track 344° to FANON, then on track 333° to ZEPER, thence

TAKEOFF RUNWAY 26: Climb on heading 258° to 1635, then direct WIVLA, then on track 260° to HIRVU, then on track 349° to cross ZIDOG at or above 5000 and at or below 230K, then on track 344° to FANON, then on track 333° to ZEPER, thence

. . . . on RRSTA transition. Maintain 8000, expect higher altitude 3 minutes after departure.

RRSTA TRANSITION (ZEPER2.RRSTA)

SW-4, 22 FEB 2024 to 21 MAR 2024

SW-4, 22 FEB 2024 to 21 MAR 2024