

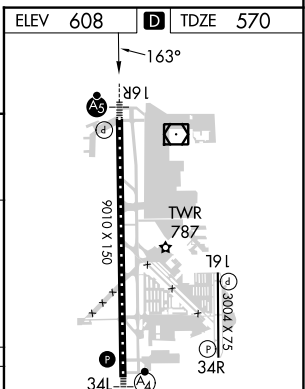
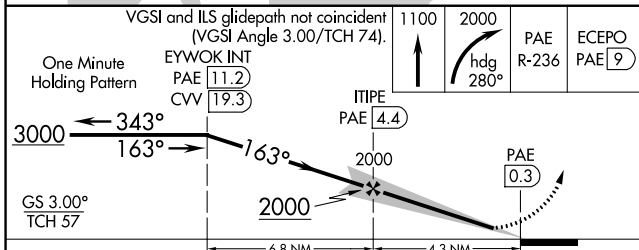
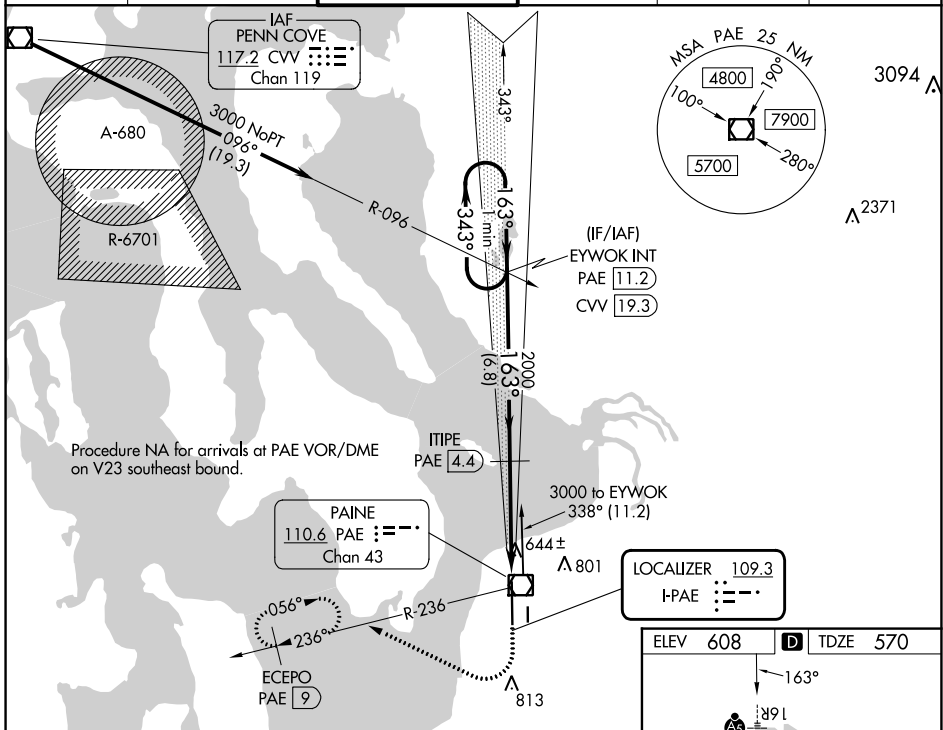
LOC I-PAE <b>109.3</b>	APP CRS <b>163°</b>	Rwy Idg <b>9010</b>
		TDZE <b>570</b>
		Apt Elev <b>608</b>

# ILS Y or LOC Y RWY 16R

SEATTLE PAINE FLD INTL (P.A.E)

<p><b>⚠</b> Circling Rwy 34R NA at night. DME required. DME from PAE VOR/DME. Simultaneous reception of I-PAE and PAE DME required.</p>	<p><b>MALSR</b></p>	<p><b>MISSED APPROACH:</b> Climb to 1100 then climbing right turn to 2000 on heading 280° and PAE VOR/DME R-236 to ECEPO/PAE 9 DME and hold.</p>
---	---------------------	--

ATIS <b>128.65</b>	SEATTLE APP CON <b>128.5 306.9</b>	<b>PAINE TOWER ★</b> <b>132.95 (CTAF) 0 256.7</b>	GND CON <b>121.8 339.8</b>	CLNC DEL <b>127.175</b>	UNICOM <b>122.95</b>
-----------------------	---------------------------------------	--	-------------------------------	----------------------------	-------------------------



CATEGORY	A	B	C	D
S-ILS 16R	770/18	200 (200-½)		NA
S-LOC 16R	940/24	370 (400-½)		NA
<b>C</b> CIRCLING	1100-1	492 (500-1)		NA

TDZ/CL Rwy 16R  
HIRL Rwy 16R-34L  
REIL Rwys 16L and 34R  
MIRL Rwys 11-29 and 16L-34R

NW-1, 22 FEB 2024 to 21 MAR 2024

NW-1, 22 FEB 2024 to 21 MAR 2024

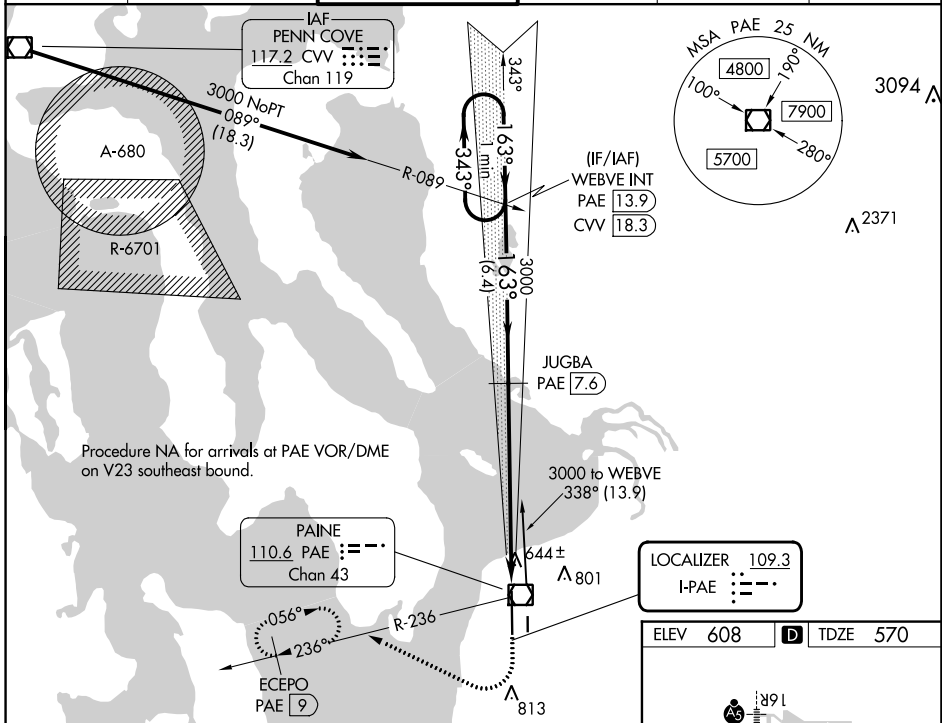
LOC I-PAE <b>109.3</b>	APP CRS <b>163°</b>	Rwy Idg <b>9010</b>
		TDZE <b>570</b>
		Apt Elev <b>608</b>

# ILS Z RWY 16R (SA CAT II)

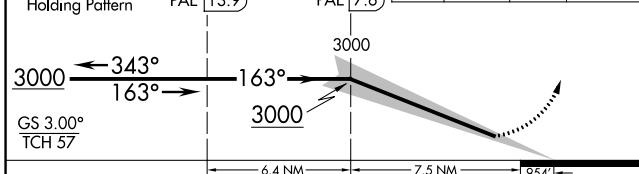
SEATTLE PAINE FLD INTL (PAE)

<p><b>▼</b> DME required. Reduced Lighting: Requires specific OPSPEC, MSPEC, or LOA approval and use of autoland or HUD to touchdown.</p> <p><b>▲</b> DME from PAE VOR/DME. Simultaneous reception of I-PAE and PAE DME required. Procedure NA when control tower closed.</p>	<p>MALSRR</p>	<p>MISSED APPROACH: Climb to 1100 then climbing right turn to 3000 on heading 280° and PAE VOR/DME R-236 to ECEPO/PAE 9 DME and hold, continue climb-in-hold to 3000.</p>
---	---------------	---

ATIS <b>128.65</b>	SEATTLE APP CON <b>128.5 306.9</b>	PAINE TOWER ★ <b>132.95 (CTAF) 0 256.7</b>	GND CON <b>121.8 339.8</b>	CLNC DEL <b>127.175</b>	UNICOM <b>122.95</b>
-----------------------	---------------------------------------	---	-------------------------------	----------------------------	-------------------------

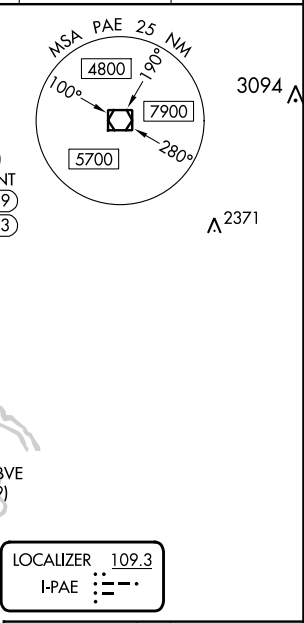


VGS1 and ILS glidepath not coincident (VGS1 Angle 3.00/TCH 74).			
One Minute Holding Pattern	WEBVE INT PAE (13.9)	JUGBA PAE (7.6)	1100 3000 PAE R-236 ECEPO PAE (9)

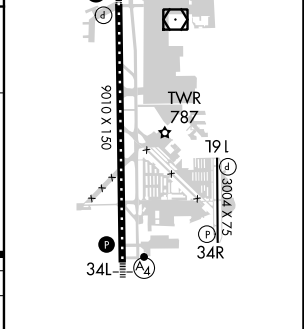


CATEGORY	A	B	C	D
S-ILS 16R	RA 116/12 100 DA 670			

**SA CATEGORY II ILS-SPECIAL AIRCREW & AIRCRAFT CERTIFICATION REQUIRED**



ELEV 608	D	TDZE 570
----------	---	----------



TDZ/CL Rwy 16R  
HIRL Rwy 16R-34L  
REIL Rws 16L and 34R  
MRL Rws 11-29 and 16L-34R

NW-1, 22 FEB 2024 to 21 MAR 2024

NW-1, 22 FEB 2024 to 21 MAR 2024

LOC I-PAE <b>109.3</b>	APP CRS <b>163°</b>	Rwy Idg TDZE Apt Elev	<b>9010</b> <b>570</b> <b>608</b>
---------------------------	------------------------	-----------------------------	---

# ILS Z or LOC Z RWY 16R

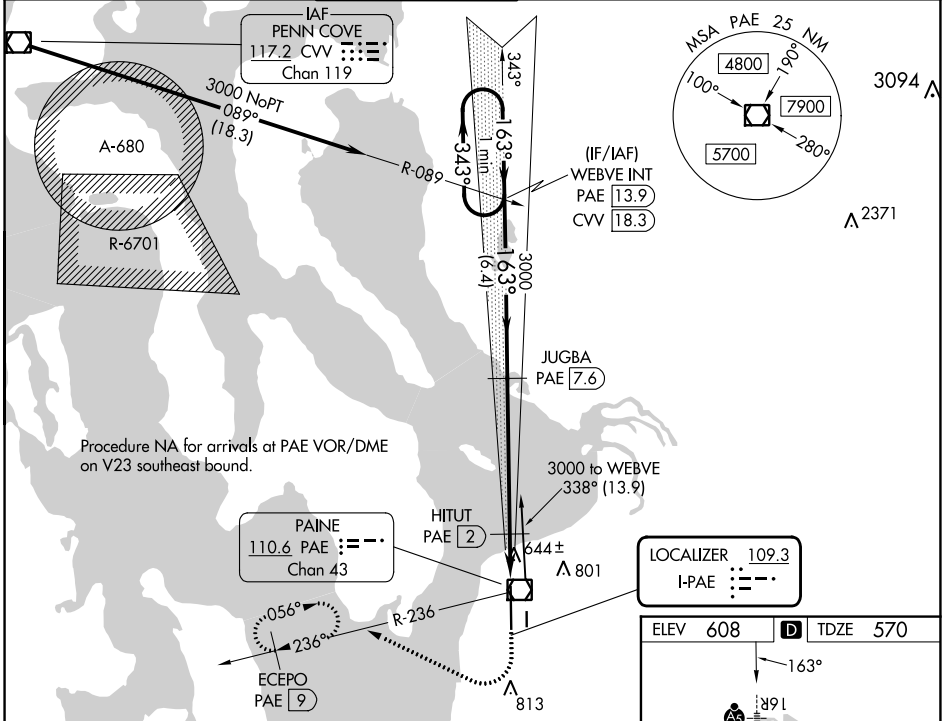
SEATTLE PAINE FLD INTL (P.A.E.)

**⚠** Circling Rwy 34R NA at night. DME required. For inop ALS, increase S-LOC 16R Cats C/D visibility to RVR 5500. DME from PAE VOR/DME. Simultaneous reception of I-PAE and PAE DME required.

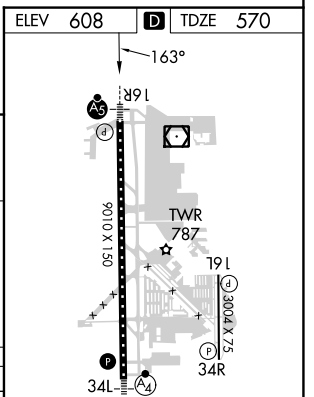
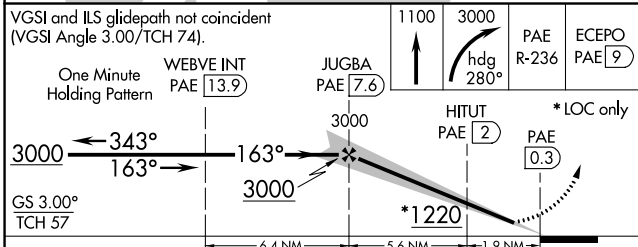


**MISSED APPROACH:** Climb to 1100 then climbing right turn to 3000 on heading 280° and PAE VOR/DME R-236 to ECEPO/PAE 9 DME and hold, continue climb-in-hold to 3000.

ATIS <b>128.65</b>	SEATTLE APP CON <b>128.5 306.9</b>	PAINE TOWER * <b>132.95 (CTAF) 0 256.7</b>	GND CON <b>121.8 339.8</b>	CLNC DEL <b>127.175</b>	UNICOM <b>122.95</b>
-----------------------	---------------------------------------	---	-------------------------------	----------------------------	-------------------------



Procedure NA for arrivals at PAE VOR/DME on V23 southeast bound.



CATEGORY	A	B	C	D
S-ILS 16R	770/18 200 (200-½)			
S-LOC 16R	940/24 370 (400-½)		940/35 370 (400-¾)	
<b>C</b> CIRCLING	1100-1 492 (500-1)		1120-1½ 512 (600-1½)	
			1160-2 552 (600-2)	

TDZ/CL Rwy 16R  
HIRL Rwy 16R-34L  
REIL Rws 16L and 34R  
MRL Rws 11-29 and 16L-34R

NW-1, 22 FEB 2024 to 21 MAR 2024

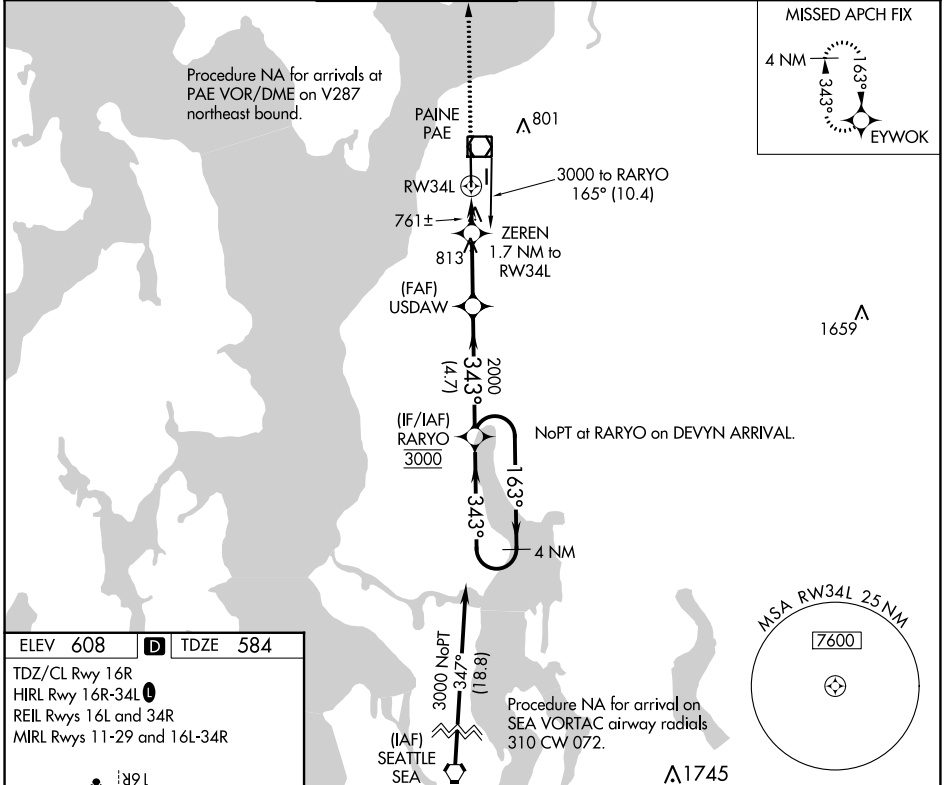
NW-1, 22 FEB 2024 to 21 MAR 2024

APP CRS	Rwy Idg	<b>9010</b>
<b>343°</b>	TDZE	<b>584</b>
	Apt Elev	<b>608</b>

# RNAV (GPS) RWY 34L

SEATTLE PAINE FLD INTL (P.A.E.)

<p><b>▼</b> Circling Rwy 34R NA at night. Rwy 34L helicopter visibility reduction below 3/4 SM NA. DME/DME RNP-0.3 NA.</p>		<p>MALSF</p>	<p>MISSED APPROACH: Climb to 3000 direct EYWOK and hold.</p>		
ATIS	SEATTLE APP CON	<b>PAINE TOWER *</b>	GND CON	CLNC DEL	UNICOM
<b>128.65</b>	<b>128.5 306.9</b>	<b>132.95 (CTAF) 0 256.7</b>	<b>121.8 339.8</b>	<b>127.175</b>	<b>122.95</b>



NW-1, 22 FEB 2024 to 21 MAR 2024

NW-1, 22 FEB 2024 to 21 MAR 2024

ELEV 608	<b>D</b>	TDZE 584
<p>TDZ/CL Rwy 16R HIRL Rwy 16R-34L REIL Rwys 16L and 34R MIRL Rwys 11-29 and 16L-34R</p>		


3000	EYWOK	<p>VGSI and descent angles not coincident (VGSI Angle 3.00/TCH 75).</p>	
<p>ZEREN 1.7 NM to RW34L</p>		<p>RARYO 4 NM Holding Pattern</p>	
<p>RW34L 1.2 NM to RW34L</p>		<p>USDAW</p>	
<p>1160</p>		<p>163° → 3000</p>	
<p>1.2 NM 0.5 NM 2.6 NM 4.7 NM</p>		<p>343° ← 3000</p>	
CATEGORY	A	B	C
LNAV MDA	1020-3/4 436 (500-3/4)		1020-1 436 (500-1)
<b>C</b> CIRCLING	1100-1 492 (500-1)		1120-1 1/2 512 (600-1 1/2) 1160-2 552 (600-2)

WAAS CH <b>60911</b> <b>W16B</b>	APP CRS <b>163°</b>	Rwy Idg TDZE Apt Elev	<b>9010</b> <b>570</b> <b>608</b>
--	------------------------	-----------------------------	---

# RNAV (GPS) Y RWY 16R

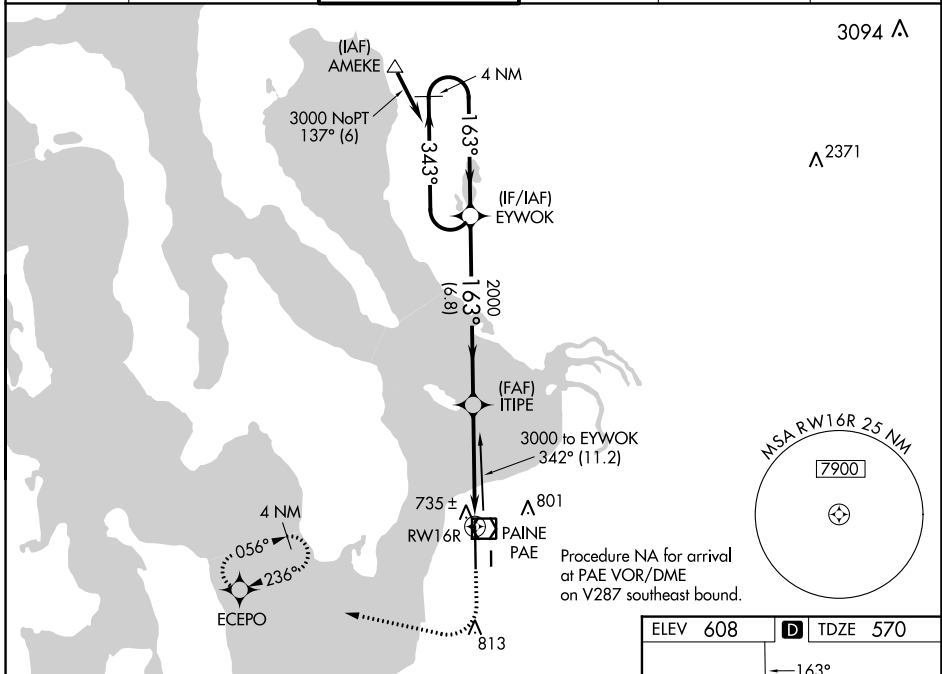
SEATTLE PAINE FLD INTL (P.A.E.)

**▽** For uncompensated Baro-VNAV systems, LNAV/VNAV NA below -5°C (23°F) or above 54°C (130°F). Circling Rwy 34R NA at night. DME/DME RNP-0.3 NA. For inop ALS, increase LNAV/VNAV Cats A/B visibility to RVR 5000.

MALSR 

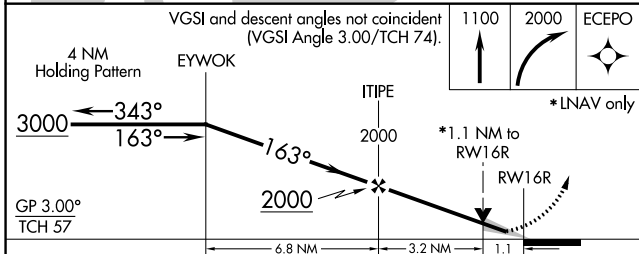
MISSED APPROACH: Climb to 1100 then climbing right turn to 2000 direct ECEPO and hold.

ATIS <b>128.65</b>	SEATTLE APP CON <b>128.5 306.9</b>	PAINE TOWER * <b>132.95 (CTAF) 0 256.7</b>	GND CON <b>121.8 339.8</b>	CLNC DEL <b>127.175</b>	UNICOM <b>122.95</b>
-----------------------	---------------------------------------	---	-------------------------------	----------------------------	-------------------------



NW-1, 22 FEB 2024 to 21 MAR 2024

NW-1, 22 FEB 2024 to 21 MAR 2024



CATEGORY	A	B	C	D
LPV DA	770/18	200 (200-½)		NA
LNAV/VNAV DA	894/30	324 (300-⅝)		NA
LNAV MDA	1000/24	430 (400-½)		NA
<b>C</b> CIRCLING	1100-1	492 (500-1)		NA



ELEV 608 **D** TDZE 570

TDZ/CL Rwy 16R  
HIRL Rwy 16R-34L  
REIL Rwys 16L and 34R  
MIRL Rwys 11-29 and 16L-34R

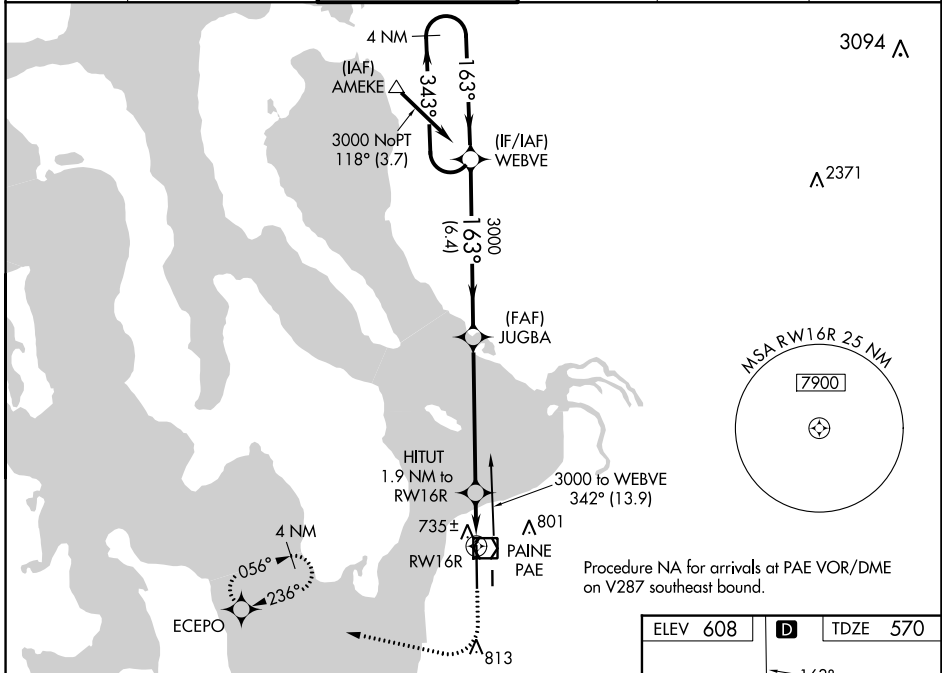
WAAS CH <b>61129</b> <b>W16A</b>	APP CRS <b>163°</b>	Rwy Idg TDZE Apt Elev	<b>9010</b> <b>570</b> <b>608</b>
--	------------------------	-----------------------------	---

# RNAV (GPS) Z RWY 16R

SEATTLE PAINE FLD INTL (P.A.E.)

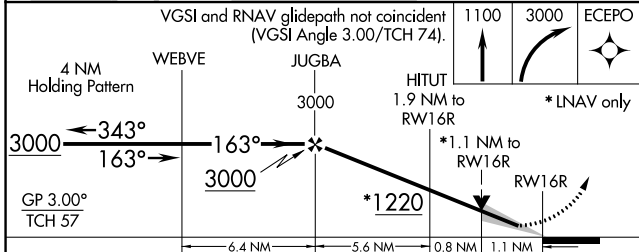
<p>▼ For uncompensated Baro-VNAV systems, LNAV/VNAV NA below -5°C (23°F) or above 54°C (130°F). Circling Rwy 34R NA at night. DME/DME RNP-0.3 NA.</p>	<p>MALSRL</p> 	<p>MISSED APPROACH: (Do not exceed 240K until ECEPO) Climb to 1100 then climbing right turn to 3000 direct ECEPO and hold, continue climb-in-hold to 3000.</p>
	<p>AS</p> 	

ATIS <b>128.65</b>	SEATTLE APP CON <b>128.5 306.9</b>	PAINE TOWER * <b>132.95 (CTAF) 0 256.7</b>	GND CON <b>121.8 339.8</b>	CLNC DEL <b>127.175</b>	UNICOM <b>122.95</b>
-----------------------	---------------------------------------	---	-------------------------------	----------------------------	-------------------------

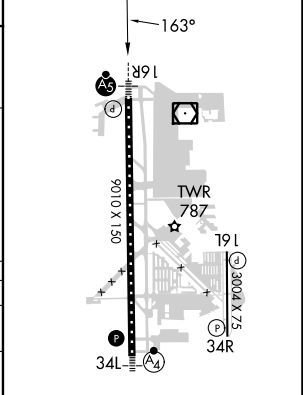


NW-1, 22 FEB 2024 to 21 MAR 2024

NW-1, 22 FEB 2024 to 21 MAR 2024



ELEV 608	<b>D</b>	TDZE 570
----------	----------	----------



CATEGORY	A	B	C	D
LPV DA	770/18 200 (200-½)			
LNAV/VNAV DA	913/30 343 (400-⅝)			
LNAV MDA	1000/24 430 (400-½)	1000/40 430 (400-¾)		
<b>C</b> CIRCLING	1100-1 492 (500-1)	1120-1½ 512 (600-1½)	1160-2 552 (600-2)	

TDZ/CL Rwy 16R  
HIRL Rwy 16R-34L  
REIL Rwys 16L and 34R  
MIRL Rws 11-29 and 16L-34R

