

LOC/DME I-OYM 108.9 Chan 26	APP CRS 281°	Rwy Idg TDZE Apt Elev 4300 1934 1934
--	------------------------	--

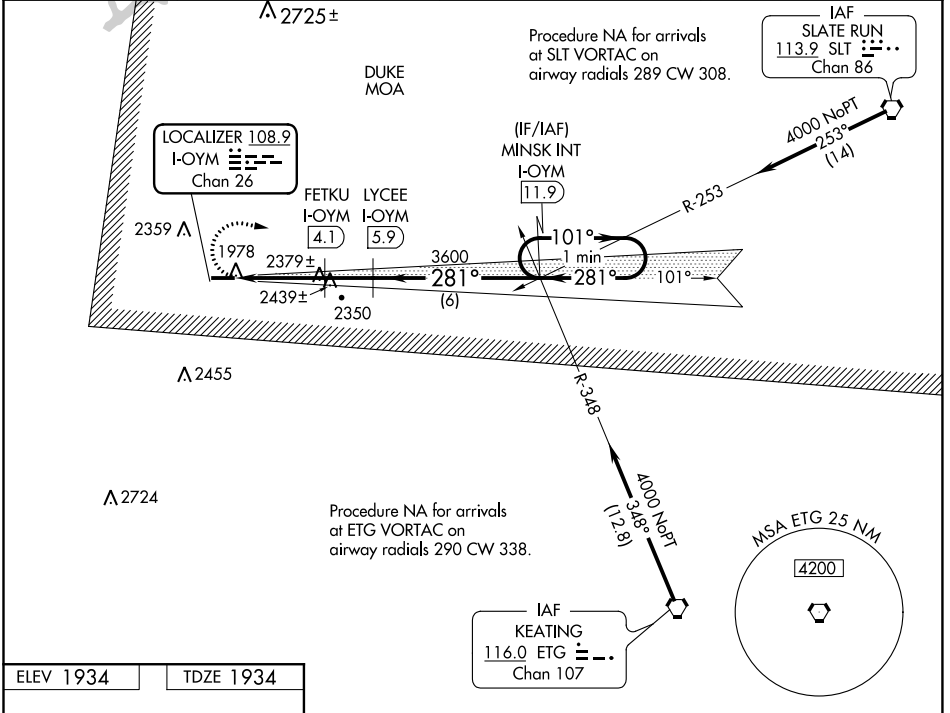
LOC RWY 28
ST MARYS MUNI (OYM)

DME required.

▼ Inop table does not apply to Cat A. Rwy 28 helicopter visibility reduction below 3/4 SM
 ▲ NA VDP NA when using Bradford altimeter setting. When local altimeter setting not received, use Bradford altimeter setting and increase all MDA 240 feet and S-28 Cat B visibility 1/4 SM, Cat C/D 1/2 SM and Circling Cat A 1/4 SM, Cat B 1/2 SM, Cat C 3/4 SM.
 ☁ -36°C For inop ALS, increase S-28 Cat C/D visibility to 2 1/2 SM. For inop ALS when using Bradford altimeter setting, increase S-28 Cat C/D visibility to 3 SM.

MALS MISSED APPROACH: Climbing right turn to 4000 on I-OYM east course to MINSK INT/ 11.9 DME and hold.

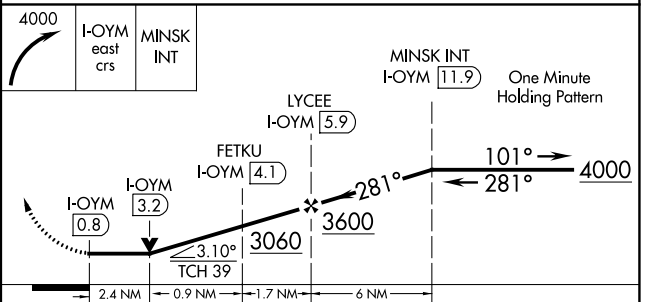
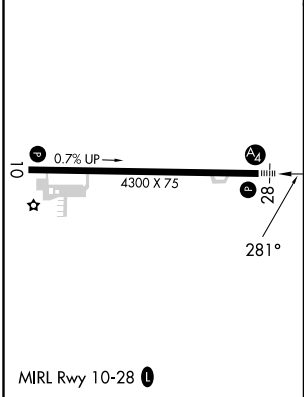
AWOS-3P 118.05	CLEVELAND CENTER 126.725 291.65	ALTOONA CLNC DEL 122.4	UNICOM 122.7 (CTAF)
--------------------------	---	----------------------------------	-------------------------------



NE-4, 22 FEB 2024 to 21 MAR 2024

NE-4, 22 FEB 2024 to 21 MAR 2024

ELEV 1934	TDZE 1934
-----------	-----------



CATEGORY	A	B	C	D
S-28	2740-1	806 (900-1)	2740-2	806 (900-2)
CIRCLING	2740-1 806 (900-1)	2740-1 1/4 806 (900-1 1/4)	2740-2 1/2 806 (900-2 1/2)	2840-2 3/4 906 (1000-2 3/4)

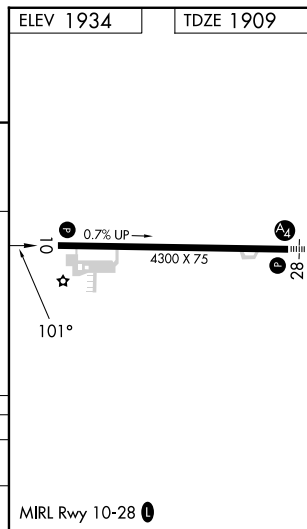
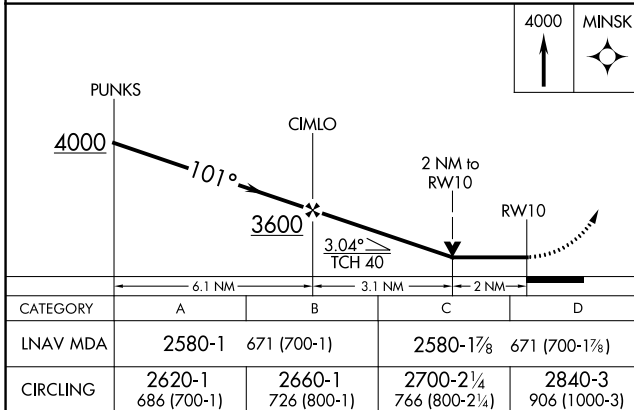
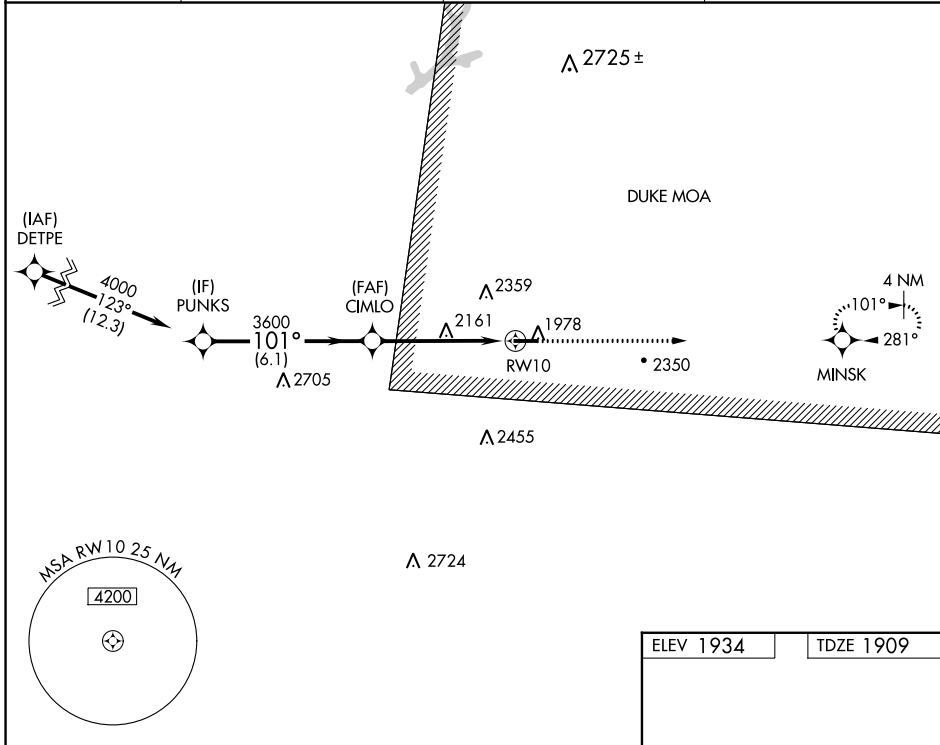
APP CRS	Rwy Idg	4300
101°	TDZE	1909
	Apt Elev	1934

RNAV (GPS) RWY 10

ST MARYS MUNI (OYM)

RNP APCH - GPS.		MISSED APPROACH: Climb to 4000 direct MINSK and hold.
Rwy 10 helicopter visibility reduction below 3/4 SM NA. VDP NA when using Bradford altimeter setting. When local altimeter setting not received, use Bradford altimeter setting and increase all MDA 240 feet, and LNAV visibility Cat A/B 1/4 SM, visibility Cat C/D 5/8 SM, and Circling visibility Cat A/B 1/2 SM, visibility Cat C 3/4 SM.		

AWOS-3P 118.05	CLEVELAND CENTER 126.725 291.65	ALTOONA CLNC DEL 122.4	UNICOM 122.7 (CTAF) 0
--------------------------	---	----------------------------------	---------------------------------



ST MARYS, PENNSYLVANIA Amdt 1D 30NOV23	41°25'N-78°30'W	ST MARYS MUNI (OYM) RNAV (GPS) RWY 10
---	-----------------	---

NE-4, 22 FEB 2024 to 21 MAR 2024

NE-4, 22 FEB 2024 to 21 MAR 2024

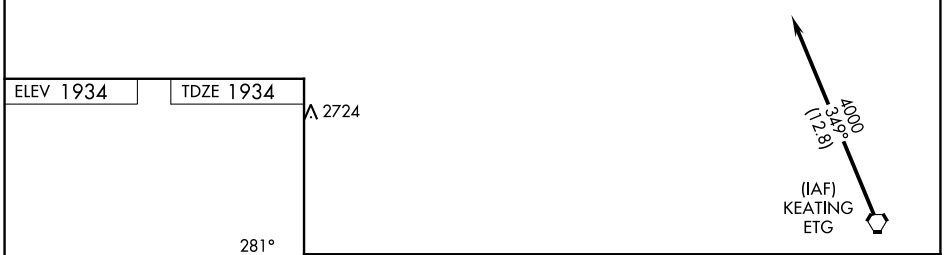
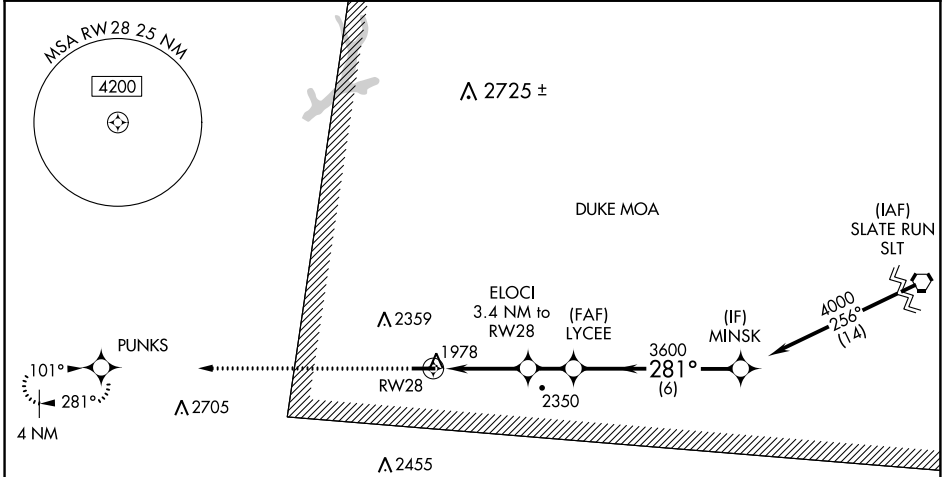
APP CRS	Rwy Idg	4300
281°	TDZE	1934
	Apt Elev	1934

RNAV (GPS) RWY 28

ST MARYS MUNI (OYM)

RNP APCH - GPS.		MALS 	MISSED APPROACH: Climb to 4000 direct PUNKS and hold.
Rwy 28 helicopter visibility reduction below 3/4 SM NA. Inop table does not apply to LNAV Cat A. VDP NA when using Bradford altimeter setting. When local altimeter setting not received, use Bradford altimeter setting and increase all MDA 240 feet, LNAV visibility Cats B/C/D 1/2 SM, and Circling visibility Cats B/C 1/2 SM. For inop ALS increase LNAV visibility Cat C/D to 2 1/2 SM. For inop ALS when using Bradford altimeter setting, increase LNAV visibility Cat C/D to 3 SM.			

AWOS-3P 118.05	CLEVELAND CENTER 126.725 291.65	ALTOONA CLNC DEL 122.4	UNICOM 122.7 (CTAF) 0
--------------------------	---	----------------------------------	---------------------------------



ELEV 1934	TDZE 1934
MIRS 0.7% UP 4300 X 75 28	
MIRL Rwy 10-28 0	

CATEGORY	A	B	C	D
LNAV MDA	2760-1	826 (900-1)	2760-2	826 (900-2)
CIRCLING	2760-1 1/4	826 (900-1 1/4)	2760-2 1/2 826 (900-2 1/2)	2840-3 906 (1000-3)

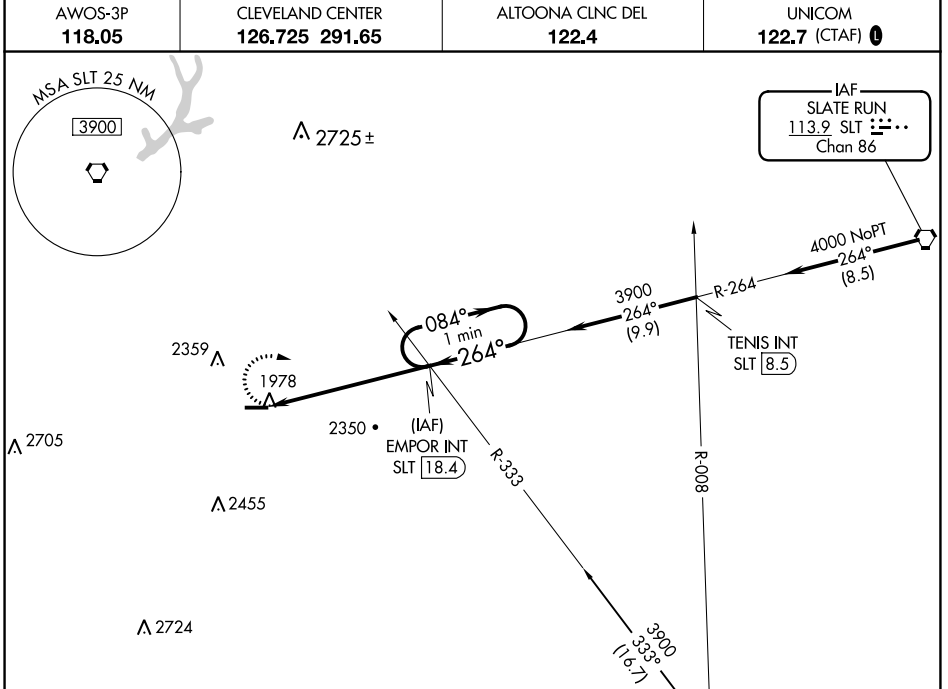
NE-4, 22 FEB 2024 to 21 MAR 2024

NE-4, 22 FEB 2024 to 21 MAR 2024

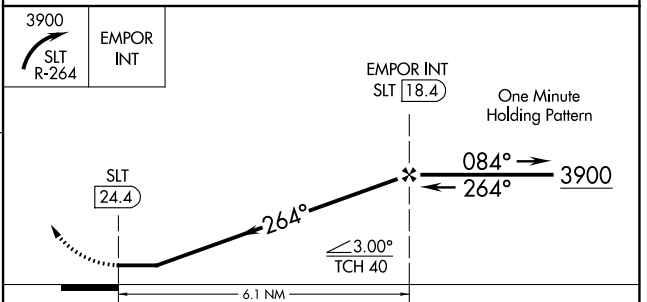
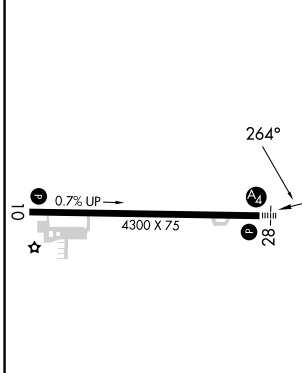
VORTAC SLT 113.9 Chan 86	APP CRS 264°	Rwy Idg 4300 TDZE 1934 Apt Elev 1934
--	------------------------	---

VOR RWY 28
ST MARYS MUNI (OYM)

<p>⚠ NA -36°C</p>	<p>Night landing: Rwy 28 NA. Helicopter visibility reduction below 1 SM NA. When local altimeter setting not received, use Bradford altimeter setting and increase all MDA 240 feet, and S-28 Cat B and Circling Cat B/C visibility ¼ mile and S-28 Cat C/D ½ mile. Inoperative table does not apply to Cats C/D.</p>	<p>MALS</p>	<p>MISSED APPROACH: Climbing right turn to 3900 via SLT R-264 to EMPOR INT/18.4 DME and hold.</p>
	<p>AWOS-3P 118.05 CLEVELAND CENTER 126.725 291.65 ALTOONA CLNC DEL 122.4 UNICOM 122.7 (CTAF) 0</p>		



ELEV 1934	TDZE 1934
-----------	-----------



MIRL Rwy 10-28 0	FAF to MAP 6.1 NM				
Knots	60	90	120	150	180
Min:Sec	6:06	4:04	3:03	2:26	2:02
CATEGORY	A	B	C	D	
S-28	2820-1	886 (900-1)	2820-2½	886 (900-2½)	
CIRCLING	2820-1¼	886 (900-1¼)	2820-2¾	886 (900-2¾)	2820-3 886 (900-3)

NE-4, 22 FEB 2024 to 21 MAR 2024

NE-4, 22 FEB 2024 to 21 MAR 2024