

WAAS CH <b>49026</b> <b>W02A</b>	APP CRS <b>017°</b>	Rwy Idg TDZE Apt Elev	<b>6020</b> <b>182</b> <b>194</b>
----------------------------------------	------------------------	-----------------------------	-----------------------------------------

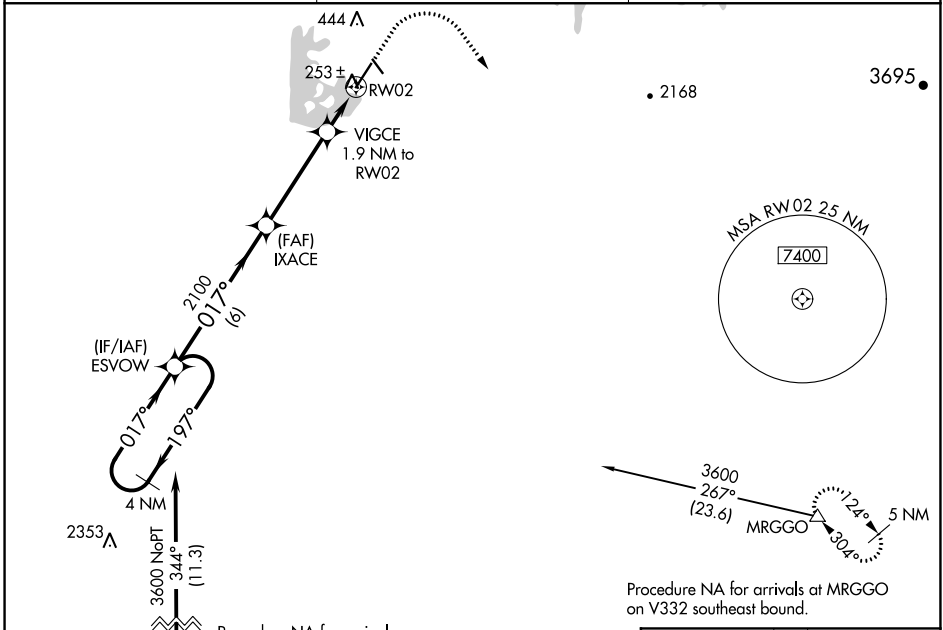
# RNAV (GPS) RWY 2

OROVILLE MUNI (OVE)

For uncompensated Baro-VNAV systems, LNAV/VNAV NA below -2°C (29°F) or above 54°C (130°F). Circling NA northeast of Rwy 13-31. DME/DME RNP-0.3 NA.

**MISSED APPROACH:** Climb to 650 then climbing right turn to 6000 direct MRGGO and hold, continue climb-in-hold to 6000.

ASOS <b>121.425</b>	NORCAL APP CON <b>125.4 259.1</b>	UNICOM <b>122.8 (CTAF)</b>
------------------------	--------------------------------------	-------------------------------



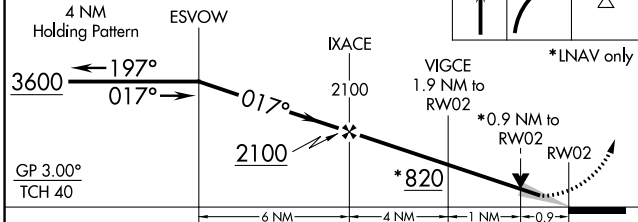
SW-2, 19 MAY 2022 to 16 JUN 2022

SW-2, 19 MAY 2022 to 16 JUN 2022

Procedure NA for arrivals at YUBBA on V23 southbound.

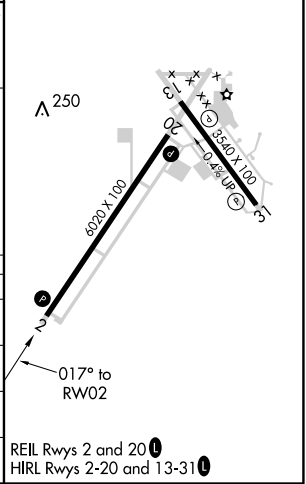
Procedure NA for arrivals at MRGGO on V332 southeast bound.

VGSI and RNAV glidepath angles not coincident (VGSI Angle 3.00/TCH 44).



CATEGORY	A	B	C	D
LPV DA		432-7/8	250 (300-7/8)	
LNAV/VNAV DA		432-7/8	250 (300-7/8)	
LNAV MDA		520-1	338 (400-1)	
<b>C</b> CIRCLING	580-1 386 (400-1)	660-1 466 (500-1)	660-1½ 466 (500-1½)	780-2 586 (600-2)

ELEV 194	TDZE 182
----------	----------



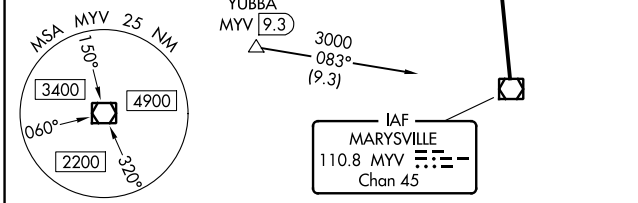
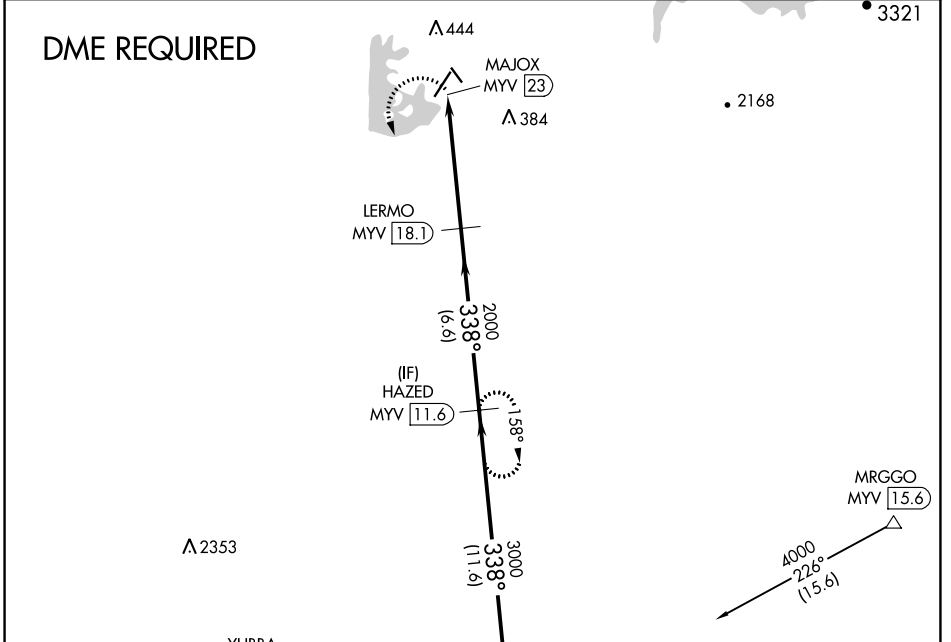
VOR/DME MYV <b>110.8</b> Chan <b>45</b>	APP CRS <b>338°</b>	Rwy Idg TDZE Apt Elev <b>N/A</b> <b>N/A</b> <b>194</b>
-----------------------------------------------	------------------------	-----------------------------------------------------------------------

**VOR-A**  
OROVILLE MUNI (OVE)

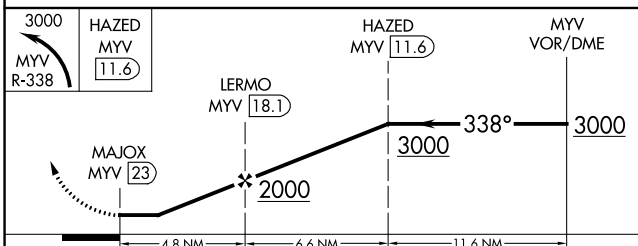
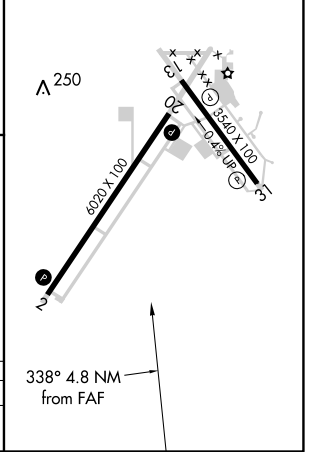
**▼** Circling NA northeast of Rwy 13-31. DME required.

MISSED APPROACH: Climbing left turn to 3000 on MYV VOR/DME R-338 to HAZED/MYV 11.6 DME and hold.

ASOS <b>121.425</b>	NORCAL APP CON <b>125.4 259.1</b>	UNICOM <b>122.8</b> (CTAF) <b>0</b>
------------------------	--------------------------------------	----------------------------------------



ELEV 194  
REIL Rwys 2 and 20 **0**  
HIRL Rwys 2-20 and 13-31 **0**



CATEGORY	A	B	C	D
CIRCLING	840-1	646 (700-1)	840-1¾ 646 (700-1¾)	840-2 646 (700-2)

SW-2, 19 MAY 2022 to 16 JUN 2022

SW-2, 19 MAY 2022 to 16 JUN 2022