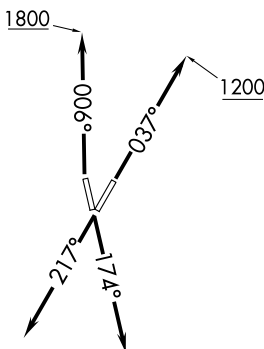


**TOP ALTITUDE:
ASSIGNED BY ATC**

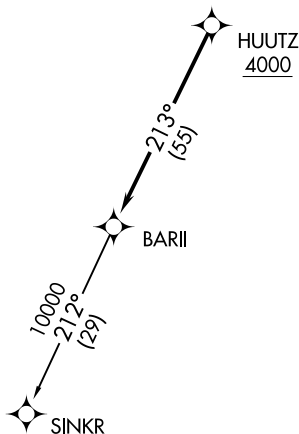
AWOS-3
119.675
CTAF
123.0
DETROIT DEP CON
134.3 284.0



TAKEOFF MINIMUMS:

Rwys 4, 17, 22: Standard.
Rwy 35: Standard with minimum climb
of 500' per NM to 1100.

- NOTE: RNAV 1.
- NOTE: RADAR required.
- NOTE: DME/DME/IRU or GPS required.
- NOTE: Turbojet departures at/above 10000,
maintain 280K until advised by ATC.



NOTE: Chart not to scale.

DEPARTURE ROUTE DESCRIPTION

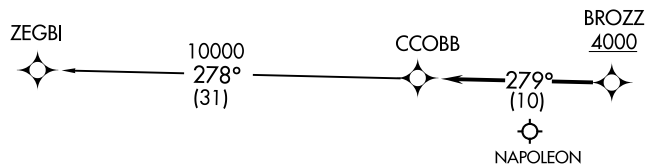
- TAKEOFF RUNWAY 4: Climb on heading 037° to 1200 then as assigned for RADAR vectors to cross HUUTZ at or above 4000, thence....
- TAKEOFF RUNWAY 17: Climb on heading 174° or as assigned for RADAR vectors to cross HUUTZ at or above 4000, thence....
- TAKEOFF RUNWAY 22: Climb on heading 217° or as assigned for RADAR vectors to cross HUUTZ at or above 4000, thence....
- TAKEOFF RUNWAY 35: Climb on heading 006° to 1800 then as assigned for RADAR vectors to cross HUUTZ at or above 4000, thence....

....on track 213° to BARII, then on (transition). Maintain ATC assigned altitude, expect filed altitude 10 minutes after departure.

SINKR TRANSITION (BARI2.SINKR):

(CCOBB2.CCOBB) 15AUG19

CCOBB TWO DEPARTURE (RNAV)

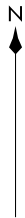
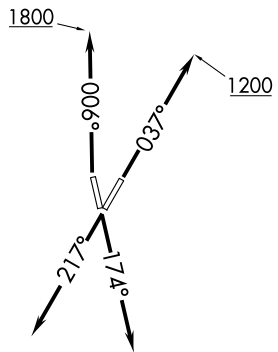


**TOP ALTITUDE:
ASSIGNED BY ATC**

AWOS-3
119.675
CTAF
123.0
DETROIT DEP CON
134.3 284.0

- NOTE:** RNAV 1.
NOTE: RADAR required.
NOTE: DME/DME/IRU or GPS required.
NOTE: Turbojet departures at/above 10000, maintain 280K until advised by ATC.
NOTE: For use by aircraft filed at or below FL220, or as assigned by ATC.
NOTE: CAUTION: Parachute jumping 6 NM SW of BROZZ, 3 NM radius of Napoleon Airport (3NP) at or below 17999 (SR-SS).

TAKEOFF MINIMUMS:
 Rwys 4, 17, 22: Standard.
 Rwy 35: Standard with minimum climb of 500' per NM to 1100.



NOTE: Chart not to scale.

DEPARTURE ROUTE DESCRIPTION

- TAKEOFF RUNWAY 4: Climb on heading 037° to 1200 then as assigned for RADAR vectors to cross BROZZ at or above 4000, thence....
TAKEOFF RUNWAY 17: Climb on heading 174° or as assigned for RADAR vectors to cross BROZZ at or above 4000, thence....
TAKEOFF RUNWAY 22: Climb on heading 217° or as assigned for RADAR vectors to cross BROZZ at or above 4000, thence....
TAKEOFF RUNWAY 35: Climb on heading 006° to 1800 then as assigned for RADAR vectors to cross BROZZ at or above 4000, thence....

....on track 279° to CCOBB, then on (transition). Maintain ATC assigned altitude, expect filed altitude 10 minutes after departure.

ZEGBI TRANSITION (CCOBB2.ZEGBI):

DETROIT/GROSSE ILE, MICHIGAN
 GROSSE ILE MUNI (ONTZ)

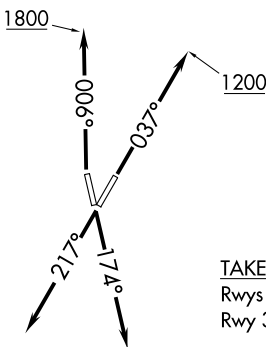
(CCOBB2.CCOBB) 2014Z
 CCOBB TWO DEPARTURE (RNAV)

AL-940 (FAA)

GROSSE ILE MUNI (ONTZ)
 DETROIT/GROSSE ILE, MICHIGAN

**TOP ALTITUDE:
ASSIGNED BY ATC**

AWOS-3
119.675
CTAF
123.0
DETROIT DEP CON
134.3 284.0



TAKEOFF MINIMUMS:

Rwys 4, 17, 22: Standard.
Rwy 35: Standard with minimum climb
of 500' per NM to 1100.

NOTE: RNAV 1.
NOTE: RADAR required.
NOTE: DME/DME/IRU or GPS required.
NOTE: Turbojet departures at/above 10000,
maintain 280K until advised by ATC.

NOTE: Chart not to scale.

DEPARTURE ROUTE DESCRIPTION

TAKEOFF RUNWAY 4: Climb on heading 037° to 1200 then as assigned for RADAR vectors to cross PHAUL at or above 4000, thence....

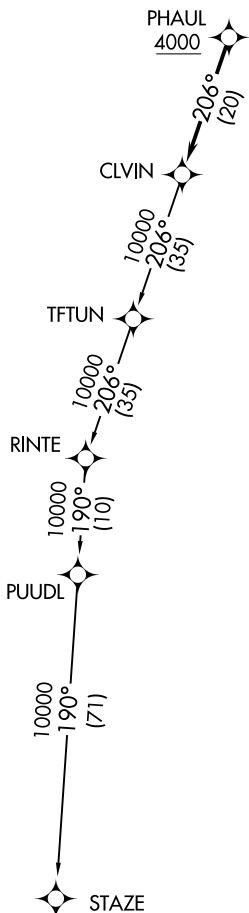
TAKEOFF RUNWAY 17: Climb on heading 174° or as assigned for RADAR vectors to cross PHAUL at or above 4000, thence....

TAKEOFF RUNWAY 22: Climb on heading 217° or as assigned for RADAR vectors to cross PHAUL at or above 4000, thence....

TAKEOFF RUNWAY 35: Climb on heading 006° to 1800 then as assigned for RADAR vectors to cross PHAUL at or above 4000, thence....

....on track 206° to CLVIN, then on (transition). Maintain ATC assigned altitude, expect filed altitude 10 minutes after departure.

STAZE TRANSITION (CLVIN2.STAZE):



EC-1, 22 FEB 2024 to 21 MAR 2024

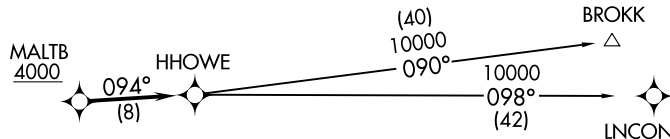
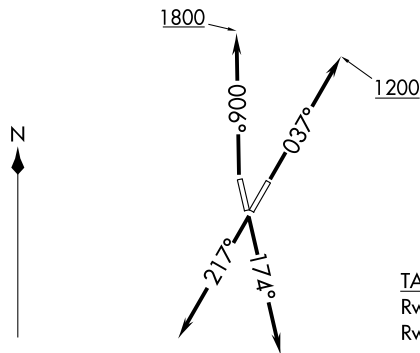
EC-1, 22 FEB 2024 to 21 MAR 2024

HHOWE THREE DEPARTURE (RNAV)
 (HHOWE3.HHOWE) 05DEC19

AWOS-3
 119.675
 CTAF
 123.0
 DETROIT DEP CON
 134.3 284.0

**TOP ALTITUDE:
 ASSIGNED BY ATC**

NOTE: RNAV 1.
 NOTE: RADAR required.
 NOTE: DME/DME/IRU or GPS required.
 NOTE: Turbojet departures at/above 10000,
 maintain 280K until advised by ATC.
 NOTE: BROKK TRANSITION: For use by flights filed at or below
 FL270, or as assigned by ATC.



TAKEOFF MINIMUMS:
 Rwys 4, 17, 22: Standard.
 Rwy 35: Standard with minimum climb
 of 500' per NM to 1100.

NOTE: Chart not to scale.

DEPARTURE ROUTE DESCRIPTION

TAKEOFF RUNWAY 4: Climb on heading 037° to 1200 then as assigned for RADAR vectors to cross MALTB at or above 4000, thence....

TAKEOFF RUNWAY 17: Climb on heading 174° or as assigned for RADAR vectors to cross MALTB at or above 4000, thence....

TAKEOFF RUNWAY 22: Climb on heading 217° or as assigned for RADAR vectors to cross MALTB at or above 4000, thence....

TAKEOFF RUNWAY 35: Climb on heading 006° to 1800 then as assigned for RADAR vectors to cross MALTB at or above 4000, thence....

....on track 094° to HHOWE, then on (transition). Maintain ATC assigned altitude, expect filed altitude 10 minutes after departure.

BROKK TRANSITION (HHOWE3.BROKK)
LNCON TRANSITION (HHOWE3.LNCON)

DETROIT/GROSSE ILE, MICHIGAN
 GROSSE ILE MUNI (ONTZ)

(HHOWE3.HHOWE) 19339
 HHOWE THREE DEPARTURE (RNAV)
 AL-940 (FAA)

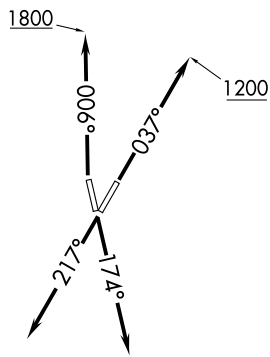
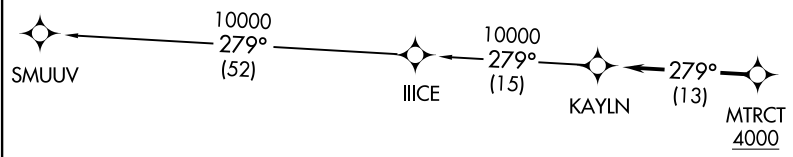
GROSSE ILE MUNI (ONTZ)
 DETROIT/GROSSE ILE, MICHIGAN

KAYLN TWO DEPARTURE (RNAV)
 (KAYLN2.KAYLN) 15AUG19

**TOP ALTITUDE:
 ASSIGNED AT ATC**

TAKEOFF MINIMUMS:
 Rwys 4, 17, 22: Standard.
 Rwy 35: Standard with minimum climb
 of 500' per NM to 1100.

AWOS-3
 119.675
 CTAF
 123.0
 DETROIT DEP CON
 134.3 284.0



NOTE: RNAV 1.
 NOTE: RADAR required.
 NOTE: DME/DME/IRU or GPS required.
 NOTE: Turbojet departures at/above 10000,
 maintain 280K until advised by ATC.

NOTE: Chart not to scale.

DEPARTURE ROUTE DESCRIPTION

TAKEOFF RUNWAY 4: Climb on heading 037° to 1200 then as assigned for RADAR vectors to cross MTRCT at or above 4000, thence....
TAKEOFF RUNWAY 17: Climb on heading 174° or as assigned for RADAR vectors to cross MTRCT at or above 4000, thence....
TAKEOFF RUNWAY 22: Climb on heading 217° or as assigned for RADAR vectors to cross MTRCT at or above 4000, thence....
TAKEOFF RUNWAY 35: Climb on heading 006° to 1800 then as assigned for RADAR vectors to cross MTRCT at or above 4000, thence....

....on track 279° to KAYLN, then on (transition). Maintain ATC assigned altitude, expect filed altitude 10 minutes after departure.

SMUUU TRANSITION (KAYLN2.SMUUV):

DETROIT/GROSSE ILE, MICHIGAN
 GROSSE ILE MUNI (ONTZ)

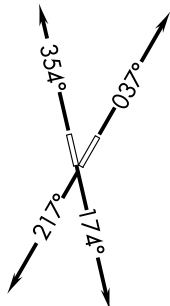
(KAYLN2.KAYLN) 19227
 KAYLN TWO DEPARTURE (RNAV)

AL-940 (FAA)

GROSSE ILE MUNI (ONTZ)
 DETROIT/GROSSE ILE, MICHIGAN

KZLOV ONE DEPARTURE (RNAV)
(KZLOV1, WINNZ) 14JUL22

AWOS-3
119.675
CTAF
123.0
DETROIT DEP CON
134.3 284.0



RNAV 1 - DME/DME/IRU or GPS.

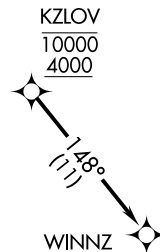
RADAR required.

**TOP ALTITUDE:
ASSIGNED BY ATC**

NOTE: Turbojet departures at/above 10000,
maintain 280K until advised by ATC.
NOTE: For use by Cleveland terminal arrivals only.

TAKEOFF MINIMUMS:

Rwy 4, 17, 22, 35: Standard with minimum
climb of 500' per NM to 1091.



NOTE: Chart not to scale.

DEPARTURE ROUTE DESCRIPTION

- TAKEOFF RUNWAY 4: Climb on heading 037° or as assigned for RADAR vectors to cross KZLOV at or above 4000 and at or below 10000, thence....
- TAKEOFF RUNWAY 17: Climb on heading 174° or as assigned for RADAR vectors to cross KZLOV at or above 4000 and at or below 10000, thence....
- TAKEOFF RUNWAY 22: Climb on heading 217° or as assigned for RADAR vectors to cross KZLOV at or above 4000 and at or below 10000, thence....
- TAKEOFF RUNWAY 35: Climb on heading 354° or as assigned for RADAR vectors to cross KZLOV at or above 4000 and at or below 10000, thence....

....on track 148° to WINNZ. Maintain assigned altitude, expect filed altitude ten minutes after departure.

DETROIT/GROSSE ILE, MICHIGAN
GROSSE ILE MUNI (ONTZ)

(KZLOV1, WINNZ) 22195
KZLOV ONE DEPARTURE (RNAV)

AL-940 (FAA)

GROSSE ILE MUNI (ONTZ)
DETROIT/GROSSE ILE, MICHIGAN

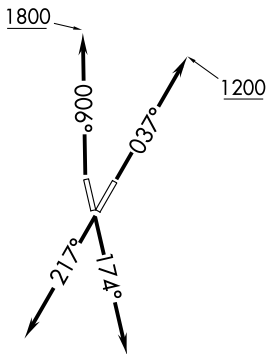
LIDDS TWO DEPARTURE (RNAV)
(LIDDS2.LIDDS) 15AUG19

**TOP ALTITUDE:
ASSIGNED BY ATC**

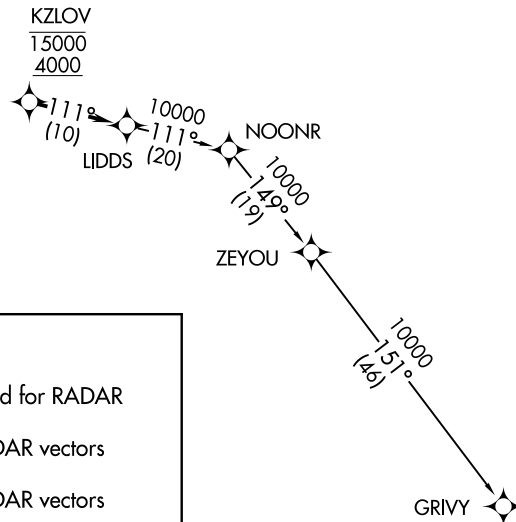
TAKEOFF MINIMUMS:

Rwys 4, 17, 22: Standard.
Rwy 35: Standard with minimum climb
of 500' per NM to 1100.

AWOS-3
119.675
CTAF
123.0
DETROIT DEP CON
134.3 284.0



NOTE: RNAV 1.
NOTE: RADAR required.
NOTE: DME/DME/IRU or GPS required.
NOTE: Turbojet departures at/above 10000,
maintain 280K until advised by ATC.



DEPARTURE ROUTE DESCRIPTION

TAKEOFF RUNWAY 4: Climb on heading 037° to 1200 then as assigned for RADAR vectors to cross KZLOV between 4000 and 15000, thence....

TAKEOFF RUNWAY 17: Climb on heading 174° or as assigned for RADAR vectors to cross KZLOV between 4000 and 15000, thence....

TAKEOFF RUNWAY 22: Climb on heading 217° or as assigned for RADAR vectors to cross KZLOV between 4000 and 15000, thence....

TAKEOFF RUNWAY 35: Climb on heading 006° to 1800 then as assigned for RADAR vectors to cross KZLOV between 4000 and 15000, thence....

....on track 111° to LIDDS, then on (transition). Maintain ATC assigned altitude, expect filed altitude 10 minutes after departure.

GRIVY TRANSITION (LIDDS2.GRIVY):

NOTE: Chart not to scale.

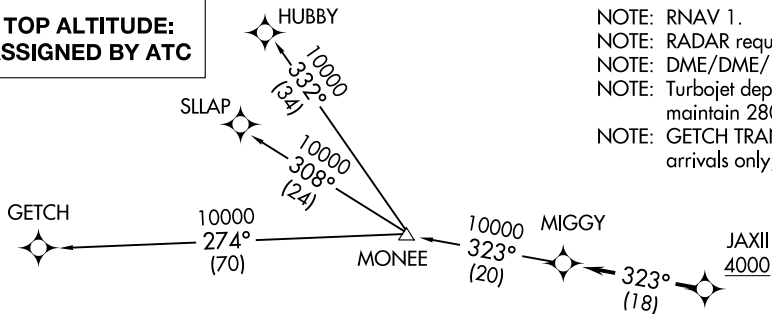
DETROIT/GROSSE ILE, MICHIGAN
GROSSE ILE MUNI (ONTZ)

(LIDDS2.LIDDS) 19227
LIDDS TWO DEPARTURE (RNAV)
AL-940 (FAA)
GROSSE ILE MUNI (ONTZ)
DETROIT/GROSSE ILE, MICHIGAN

MIGGY TWO DEPARTURE (RNAV)
 (MIGGY2.MIGGY) 15AUG19

DETROIT/GROSSE ILE, MICHIGAN
 GROSSE ILE MUNI (ONTZ)

**TOP ALTITUDE:
 ASSIGNED BY ATC**



NOTE: RNAV 1.
 NOTE: RADAR required.
 NOTE: DME/DME/IRU or GPS required.
 NOTE: Turbojet departures at/above 10000, maintain 280K until advised by ATC.
 NOTE: GETCH TRANSITION: For use by KMKE area arrivals only, or as assigned by ATC.

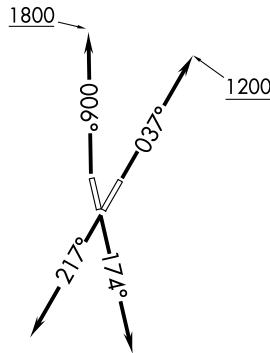
AWOS-3
 119.675
 CTAF
 123.0
 DETROIT DEP CON
 134.3 284.0

DEPARTURE ROUTE DESCRIPTION

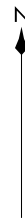
TAKEOFF RUNWAY 4: Climb on heading 037° to 1200 then as assigned for RADAR vectors to cross JAXII at or above 4000, thence....
TAKEOFF RUNWAY 17: Climb on heading 174° or as assigned for RADAR vectors to cross JAXII at or above 4000, thence....
TAKEOFF RUNWAY 22: Climb on heading 217° or as assigned for RADAR vectors to cross JAXII at or above 4000, thence....
TAKEOFF RUNWAY 35: Climb on heading 006° to 1800 then as assigned for RADAR vectors to cross JAXII at or above 4000, thence....

....on track 323° to MIGGY, then on (transition). Maintain ATC assigned altitude, expect filed altitude 10 minutes after departure.

GETCH TRANSITION (MIGGY2.GETCH):
HUBBY TRANSITION (MIGGY2.HUBBY):
SLLAP TRANSITION (MIGGY2.SLLAP):



TAKEOFF MINIMUMS:
 Rws 4, 17, 22: Standard.
 Rwy 35: Standard with minimum climb of 500' per NM to 1100.



NOTE: Chart not to scale.

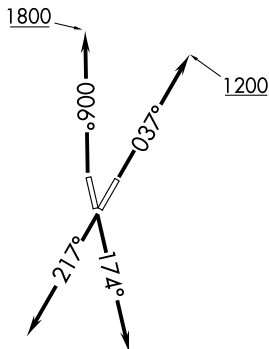
(MIGGY2.MIGGY) 19227
 MIGGY TWO DEPARTURE (RNAV)

AL-940 (FAA)

GROSSE ILE MUNI (ONTZ)
 DETROIT/GROSSE ILE, MICHIGAN

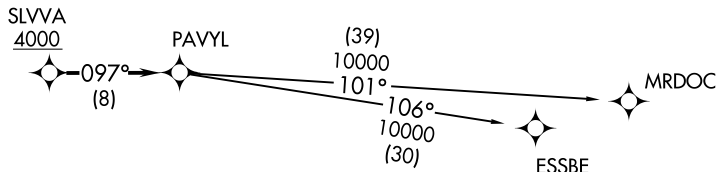
PAVYL TWO DEPARTURE (RNAV)
(PAVYL2.PAVYL) 15AUG19

**TOP ALTITUDE:
ASSIGNED BY ATC**



NOTE: RNAV 1.
NOTE: RADAR required.
NOTE: DME/DME/IRU or GPS required.
NOTE: Turbojet departures at/above 10000,
maintain 280K until advised by ATC.

AWOS-3
119.675
CTAF
123.0
DETROIT DEP CON
134.3 284.0



TAKEOFF MINIMUMS:
Rwys 4, 17, 22: Standard.
Rwy 35: Standard with minimum climb
of 500' per NM to 1100.

NOTE: Chart not to scale.

DEPARTURE ROUTE DESCRIPTION

- TAKEOFF RUNWAY 4:** Climb on heading 037° to 1200 then as assigned for RADAR vectors to cross SLVVA at or above 4000, thence....
- TAKEOFF RUNWAY 17:** Climb on heading 174° or as assigned for RADAR vectors to cross SLVVA at or above 4000, thence....
- TAKEOFF RUNWAY 22:** Climb on heading 217° or as assigned for RADAR vectors to cross SLVVA at or above 4000, thence....
- TAKEOFF RUNWAY 35:** Climb on heading 006° to 1800 then as assigned for RADAR vectors to cross SLVVA at or above 4000, thence....

...on track 097° to PAVYL, then on (transition). Maintain ATC assigned altitude, expect filed altitude 10 minutes after departure.

ESSBE TRANSITION (PAVYL2.ESSBE):
MRDOC TRANSITION (PAVYL2.MRDOC):

DETROIT/GROSSE ILE, MICHIGAN
GROSSE ILE MUNI (ONTZ)

(PAVYL2.PAVYL) 1922Z
PAVYL TWO DEPARTURE (RNAV)

AL-940 (FAA)

GROSSE ILE MUNI (ONTZ)
DETROIT/GROSSE ILE, MICHIGAN

SNDRS TWO DEPARTURE (RNAV)
(SNDRS2.SNDRS) 15AUG19

DEPARTURE ROUTE DESCRIPTION

TAKEOFF RUNWAY 4: Climb on heading 037° to 1200 then as assigned for RADAR vectors to cross JWELS at or above 4000, thence....

TAKEOFF RUNWAY 17: Climb on heading 174° or as assigned for RADAR vectors to cross JWELS at or above 4000, thence....

TAKEOFF RUNWAY 22: Climb on heading 217° or as assigned for RADAR vectors to cross JWELS at or above 4000, thence....

TAKEOFF RUNWAY 35: Climb on heading 006° to 1800 then as assigned for RADAR vectors to cross JWELS at or above 4000, thence....

....on track 218° to SNDRS, then on (transition). Maintain ATC assigned altitude, expect filed altitude 10 minutes after departure.

BGHRT TRANSITION (SNDRS2.BGHRT):

TORRR TRANSITION (SNDRS2.TORRR):

NOTE: RNAV 1.

NOTE: RADAR required.

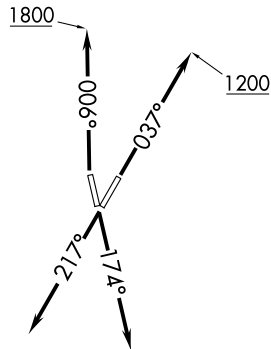
NOTE: DME/DME/IRU or GPS required.

NOTE: Turbojet departures at/above 10000, maintain 280K until advised by ATC.

NOTE: TORRR TRANSITION: For use by KIND and KCVG area arrivals only and flights filed at or below FL220, or as assigned by ATC.

TOP ALTITUDE: ASSIGNED BY ATC

AWOS-3
119.675
CTAF
123.0
DETROIT DEP CON
134.3 284.0

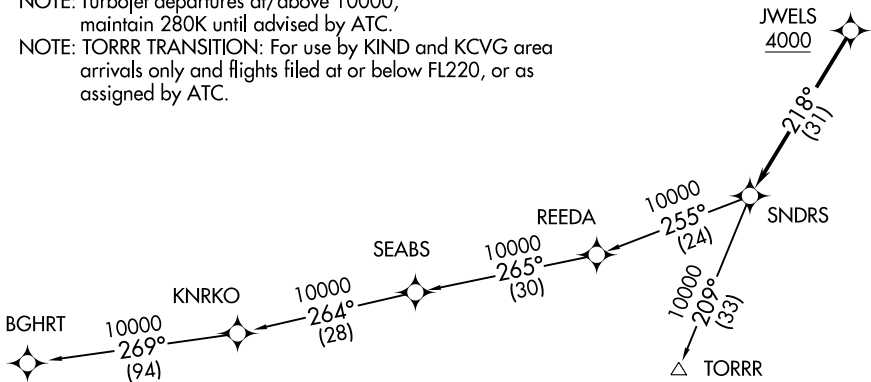


TAKEOFF MINIMUMS:

Rwys 4, 17, 22: Standard.

Rwy 35: Standard with minimum climb of 500' per NM to 1100.

NOTE: Chart not to scale.



DETROIT/GROSSE ILE, MICHIGAN
GROSSE ILE MUNI (ONTZ)

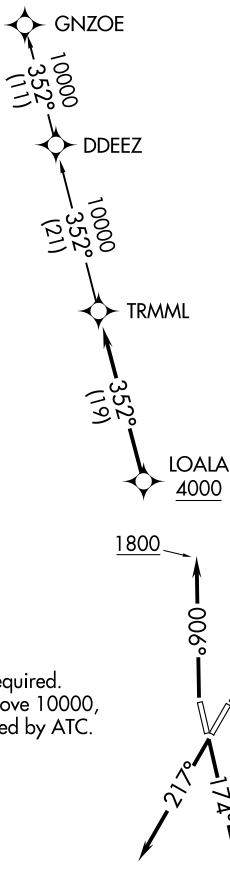
(SNDRS2.SNDRS) 1922Z
SNDRS TWO DEPARTURE (RNAV)

AL-940 (FAA)

GROSSE ILE MUNI (ONTZ)
DETROIT/GROSSE ILE, MICHIGAN

**TOP ALTITUDE:
ASSIGNED BY ATC**

AWOS-3
119.675
CTAF
123.0
DETROIT DEP CON
134.3 284.0



TAKEOFF MINIMUMS:

Rwys 4, 17, 22: Standard.
Rwy 35: Standard with minimum climb
of 500' per NM to 1100.

- NOTE: RNAV 1.
- NOTE: RADAR required.
- NOTE: DME/DME/IRU or GPS required.
- NOTE: Turbojet departures at/above 10000,
maintain 280K until advised by ATC.

NOTE: Chart not to scale.

DEPARTURE ROUTE DESCRIPTION

TAKEOFF RUNWAY 4: Climb on heading 037° to 1200 then as assigned for RADAR vectors to cross LOALA at or above 4000, thence....

TAKEOFF RUNWAY 17: Climb on heading 174° or as assigned for RADAR vectors to cross LOALA at or above 4000, thence....

TAKEOFF RUNWAY 22: Climb on heading 217° or as assigned for RADAR vectors to cross LOALA at or above 4000, thence....

TAKEOFF RUNWAY 35: Climb on heading 006° to 1800 then as assigned for RADAR vectors to cross LOALA at or above 4000, thence....

....on track 352° to TRMML, then on (transition). Maintain ATC assigned altitude, expect filed altitude 10 minutes after departure.

GNZOE TRANSITION (TRMML3.GNZOE):

(ZETTR3.ZETTR) 19339

ZETTR THREE DEPARTURE (RNAV)

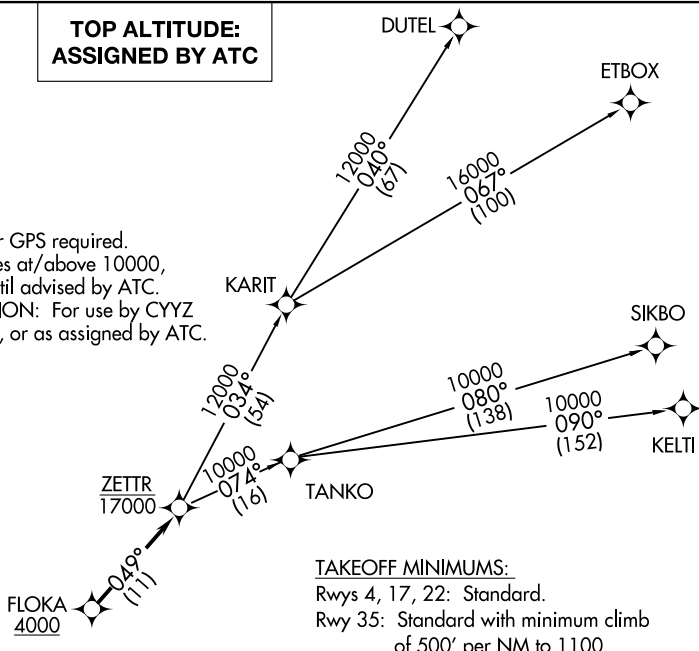
AL-940 (FAA)

GROSSE ILE MUNI (0N2)
DETROIT/GROSSE ILE, MICHIGAN

AWOS-3
119.675
CTAF
123.0
DETROIT DEP CON
134.3 284.0

**TOP ALTITUDE:
ASSIGNED BY ATC**

NOTE: RNAV 1.
NOTE: RADAR required.
NOTE: DME/DME/IRU or GPS required.
NOTE: Turbojet departures at/above 10000,
maintain 280K until advised by ATC.
NOTE: TANKO TRANSITION: For use by CYYZ
area arrivals only, or as assigned by ATC.



TAKEOFF MINIMUMS:

Rwys 4, 17, 22: Standard.
Rwy 35: Standard with minimum climb
of 500' per NM to 1100.

DEPARTURE ROUTE DESCRIPTION

TAKEOFF RUNWAY 4: Climb on heading 037° to 1200 then as assigned for RADAR vectors to cross FLOKA at or above 4000, thence....

TAKEOFF RUNWAY 17: Climb on heading 174° or as assigned for RADAR vectors to cross FLOKA at or above 4000, thence....

TAKEOFF RUNWAY 22: Climb on heading 217° or as assigned for RADAR vectors to cross FLOKA at or above 4000, thence....

TAKEOFF RUNWAY 35: Climb on heading 006° to 1800 then as assigned for RADAR vectors to cross FLOKA at or above 4000, thence....

....on track 049° to cross ZETTR at or below 17000, then on (transition). Maintain ATC assigned altitude, expect filed altitude 10 minutes after departure.

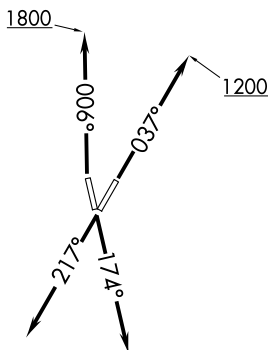
DUTEL TRANSITION (ZETTR3.DUTEL):

ETBOX TRANSITION (ZETTR3.ETBOX):

KELTI TRANSITION (ZETTR3.KELTI):

SIKBO TRANSITION (ZETTR3.SIKBO):

TANKO TRANSITION (ZETTR3.TANKO):



NOTE: Chart not to scale.

EC-1, 22 FEB 2024 to 21 MAR 2024

EC-1, 22 FEB 2024 to 21 MAR 2024

ZETTR THREE DEPARTURE (RNAV)
(ZETTR3.ZETTR) 05DEC19

DETROIT/GROSSE ILE, MICHIGAN
GROSSE ILE MUNI (0N2)