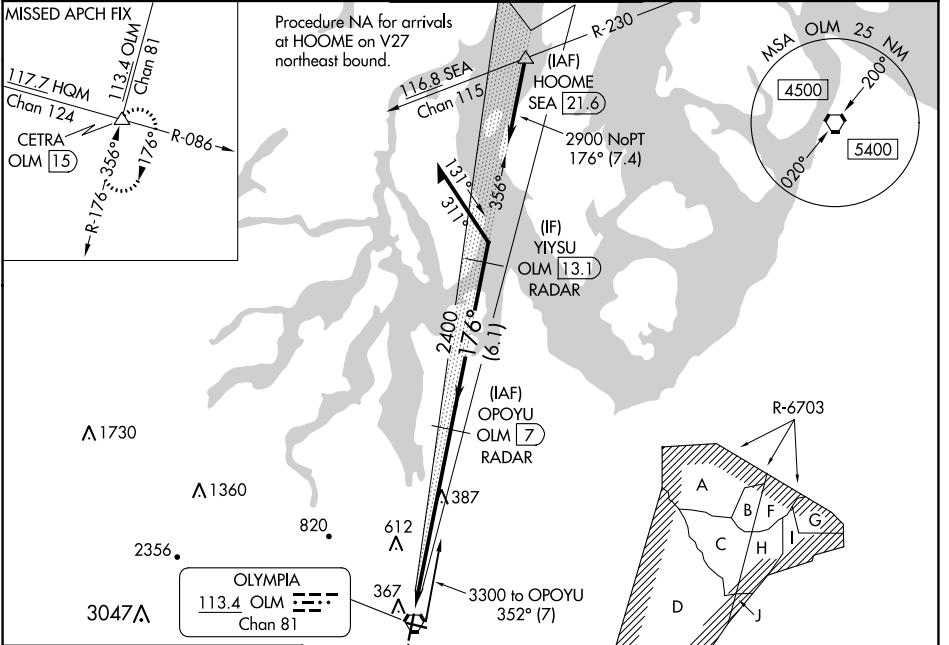


LOC I-OLM <b>111.9</b>	APP CRS <b>176°</b>	Rwy Idg <b>5500</b>
		TDZE <b>207</b>
		Apt Elev <b>208</b>

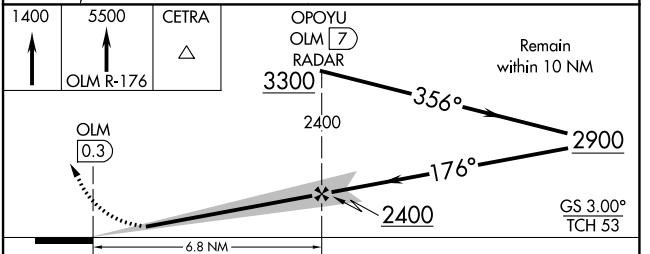
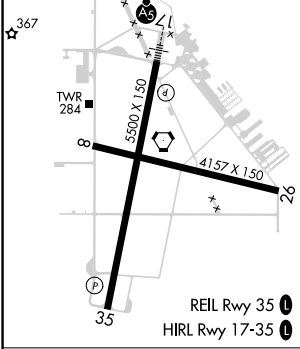
**ILS or LOC RWY 17**  
OLYMPIA RGNL (OLM)

<p>DME or RADAR required. For inop ALS, increase S-LOC 17 Cat C/D visibility to 1 3/8 SM.</p>	<p>MALS</p>	<p>MISSED APPROACH: Climb to 1400 then climb to 5500 on OLM VORTAC R-176 to CETRA INT/OLM 15 DME and hold, continue climb-in-hold to 5500.</p>

ATIS★ <b>135.725</b>	SEATTLE APP CON <b>121.1 290.9</b>	OLYMPIA TOWER★ <b>124.4(CTAF) 254.25</b>	GND CON <b>121.6</b>	UNICOM <b>122.95</b>
-------------------------	---------------------------------------	---------------------------------------------	-------------------------	-------------------------



ELEV 208	TDZE 207
----------	----------



CATEGORY	A	B	C	D
S-ILS 17	407-1/2 200 (200-1/2)			
S-LOC 17	680-1/2	473 (500-1/2)	680-1	473 (500-1)
<input checked="" type="checkbox"/> CIRCLING	720-1 512 (600-1)	860-1 652 (700-1)	1020-2 1/2 812 (900-2 1/2)	1020-2 3/4 812 (900-2 3/4)

NW-1, 22 FEB 2024 to 21 MAR 2024

NW-1, 22 FEB 2024 to 21 MAR 2024

WAAS CH <b>45599</b> <b>W17A</b>	APP CRS <b>176°</b>	Rwy Idg TDZE <b>207</b> Apt Elev <b>208</b>	<b>5500</b>
----------------------------------------	------------------------	---------------------------------------------------	-------------

# RNAV (GPS) RWY 17

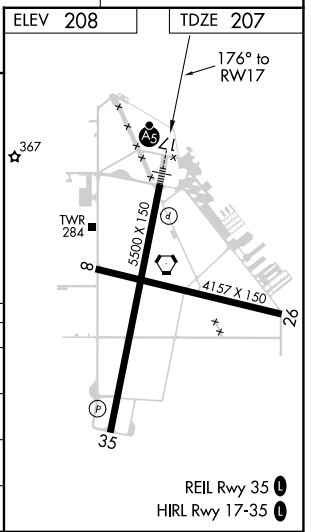
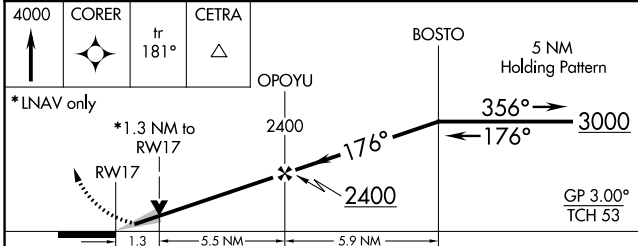
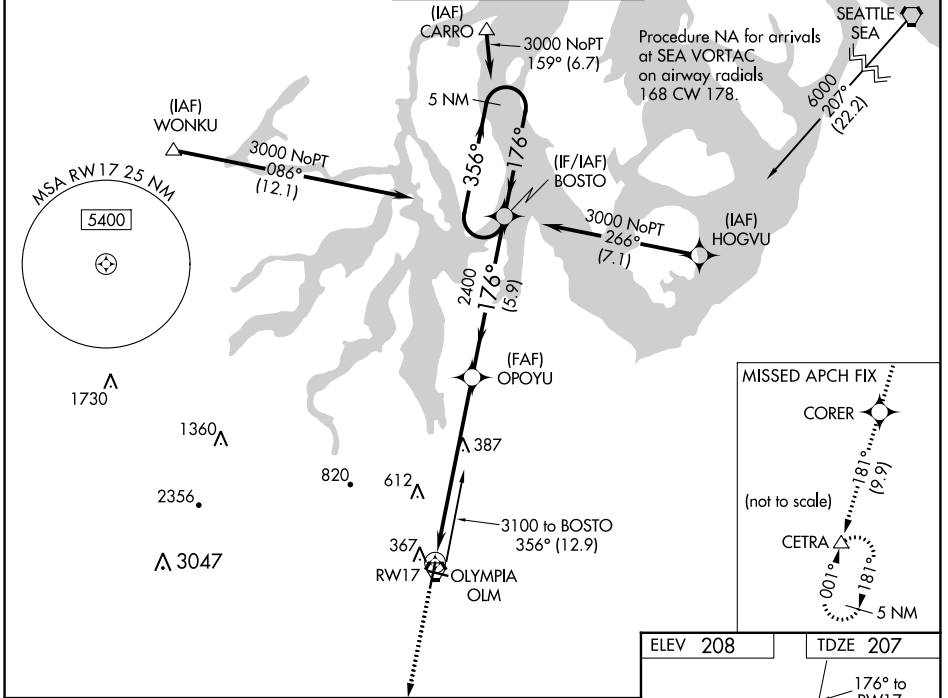
OLYMPIA RGNL (OLM)

**⚠** For uncompensated Baro-VNAV systems, LNAV/VNAV NA below -9°C (16°F) or above 54°C (130°F). DME/DME RNP-0.3 NA.  
 For inop ALS; increase LNAV/VNAV visibility all Cats to 1½ SM.  
 Increase LNAV Cats C/D to 1¾ SM.



**MISSED APPROACH:** Climb to 4000 direct CORER and on track 181° to CETRA and hold, continue climb-in-hold to 4000.

ATIS ★ <b>135.725</b>	SEATTLE APP CON <b>121.1 290.9</b>	OLYMPIA TOWER ★ <b>124.4 (CTAF) 254.25</b>	GND CON <b>121.6</b>	UNICOM <b>122.95</b>
--------------------------	---------------------------------------	-----------------------------------------------	-------------------------	-------------------------



CATEGORY	A	B	C	D
LPV DA		407-½	200 (200-½)	
LNAV/VNAV DA		629-¾	422 (500-¾)	
LNAV MDA	680-½	473 (500-½)	680-1	473 (500-1)
CIRCLING	720-1	860-1	1020-2½	1020-2¾
	512 (600-1)	652 (700-1)	812 (900-2½)	812 (900-2¾)

NW-1, 22 FEB 2024 to 21 MAR 2024

NW-1, 22 FEB 2024 to 21 MAR 2024

APP CRS	Rwy Idg	<b>5500</b>
<b>356°</b>	TDZE	<b>208</b>
	Apt Elev	<b>208</b>

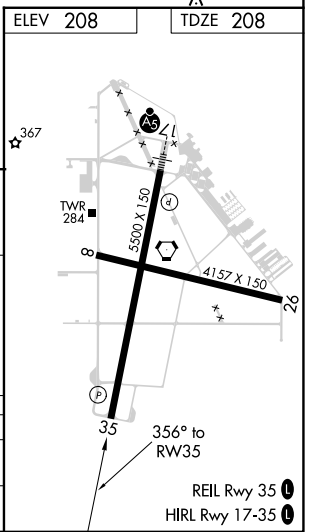
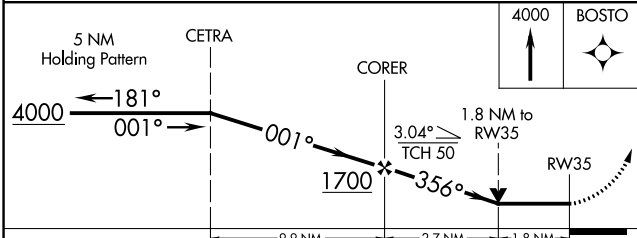
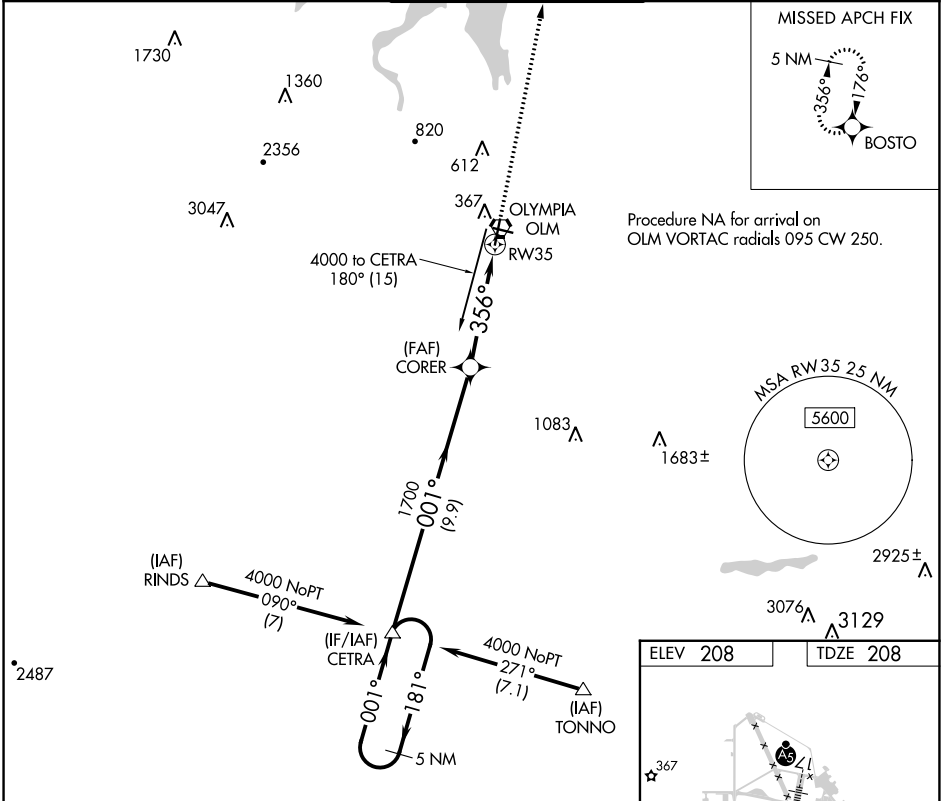
# RNAV (GPS) RWY 35

OLYMPIA RGNL (OLM)

**▼** Rwy 35 helicopter visibility reduction below 3/4 SM NA.  
**▲** DME/DME RNP-0.3 NA.

MISSED APPROACH: Climb to 4000 direct BOSTO and hold, continue climb-in-hold to 4000.

ATIS ★	SEATTLE APP CON	OLYMPIA TOWER ★	GND CON	UNICOM
<b>135.725</b>	<b>121.1 290.9</b>	<b>124.4 (CTAF) 254.25</b>	<b>121.6</b>	<b>122.95</b>



CATEGORY	A	B	C	D
LNAV MDA	840-1	632 (700-1)	840-1 3/4	632 (700-1 3/4)
<b>C</b> CIRCLING	840-1 632 (700-1)	860-1 652 (700-1)	1020-2 1/2 812 (900-2 1/2)	1020-2 3/4 812 (900-2 3/4)

NW-1, 22 FEB 2024 to 21 MAR 2024

NW-1, 22 FEB 2024 to 21 MAR 2024

VORTAC OLM <b>113.4</b> Chan <b>81</b>	APP CRS <b>356°</b>	Rwy Idg TDZE <b>208</b> Apt Elev <b>208</b>
----------------------------------------------	------------------------	---------------------------------------------------

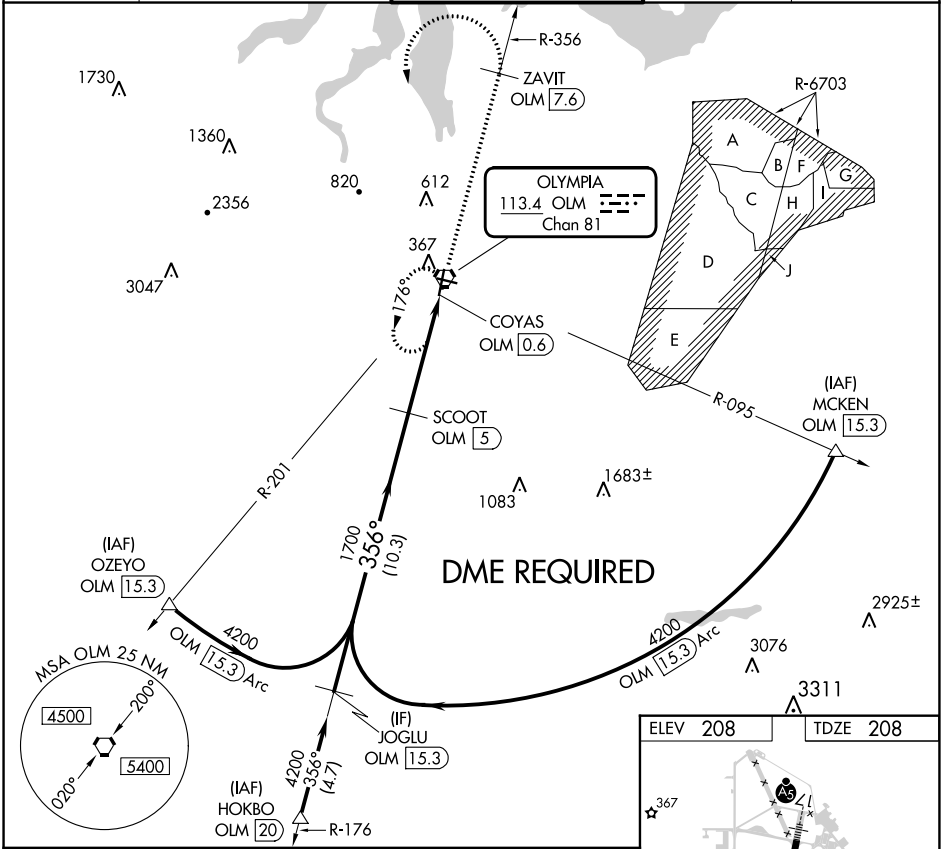
# VOR RWY 35

OLYMPIA RGNL (OLM)

**▼** Rwy 35 helicopter visibility reduction below  $\frac{3}{4}$  SM NA.  
**▲** DME required.

MISSED APPROACH: Climb to 4000 on OLM VORTAC R-356 to ZAVIT/OLM 7.6 DME then climbing left turn direct OLM VORTAC and hold.

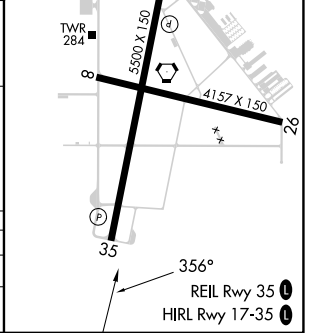
ATIS* <b>135.725</b>	SEATTLE APP CON <b>121.1 290.9</b>	OLYMPIA TOWER* <b>124.4 (CTAF) 254.25</b>	GND CON <b>121.6</b>	UNICOM <b>122.95</b>
-------------------------	---------------------------------------	----------------------------------------------	-------------------------	-------------------------



NW-1, 22 FEB 2024 to 21 MAR 2024

NW-1, 22 FEB 2024 to 21 MAR 2024

JOGLU OLM [15.3]	SCOOT OLM [5]	4000	ZAVIT OLM [7.6]	OLM
		OLM R-356	OLM [2.5]	OLM VORTAC
4200	1700	COYAS OLM [0.6]		
	10.3 NM	2.5 NM	1.8 NM	
CATEGORY	A	B	C	D
S-35	840-1	632 (700-1)	840-1¾	632 (700-1¾)
<b>C</b> CIRCLING	840-1 632 (700-1)	860-1 652 (700-1)	1020-2½ 812 (900-2½)	1020-2¾ 812 (900-2¾)

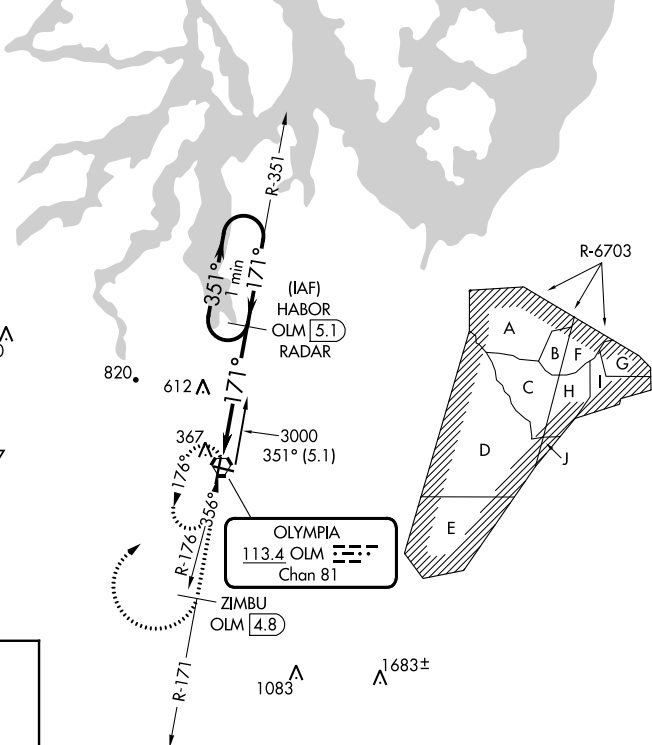
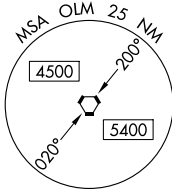


VORTAC OLM <b>113.4</b> Chan 81	APP CRS <b>171°</b>	Rwy Idg TDZE Apt Elev	<b>N/A</b> <b>N/A</b> <b>208</b>
---------------------------------------	------------------------	-----------------------------	----------------------------------------

**VOR-A**  
OLYMPIA RGNL (OLM)

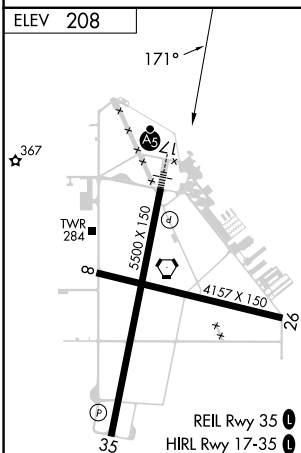
**⚠** DME required. MISSED APPROACH: Climb to 4200 on OLM VORTAC R-171 to ZIMBU/OLM 4.8 DME and climbing right turn direct OLM VORTAC and hold, continue climb-in-hold to 4200.

ATIS★ <b>135.725</b>	SEATTLE APP CON <b>121.1 290.9</b>	OLYMPIA TOWER★ <b>124.4 (CTAF) 254.25</b>	GND CON <b>121.6</b>	UNICOM <b>122.95</b>
-------------------------	---------------------------------------	----------------------------------------------	-------------------------	-------------------------

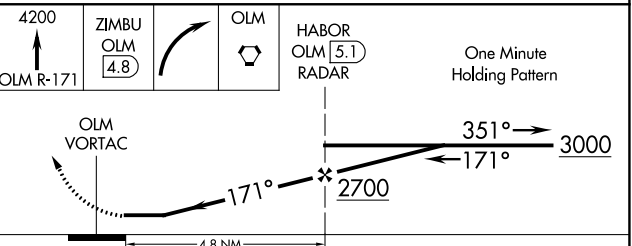


NW-1, 22 FEB 2024 to 21 MAR 2024

NW-1, 22 FEB 2024 to 21 MAR 2024



**DME or RADAR REQUIRED**



FAF to MAP 4.8 NM						
Knots	60	90	120	150	180	
Min:Sec	4:48	3:12	2:24	1:55	1:36	
CATEGORY	A		B		C	D
<input checked="" type="checkbox"/> CIRCLING	880-1		672 (700-1)		1020-2½ 812 (900-2½)	1020-2¾ 812 (900-2¾)