

APP CRS	Rwy Idg	4001
111°	TDZE	125
	Apt Elev	127

RNAV (GPS) RWY 12

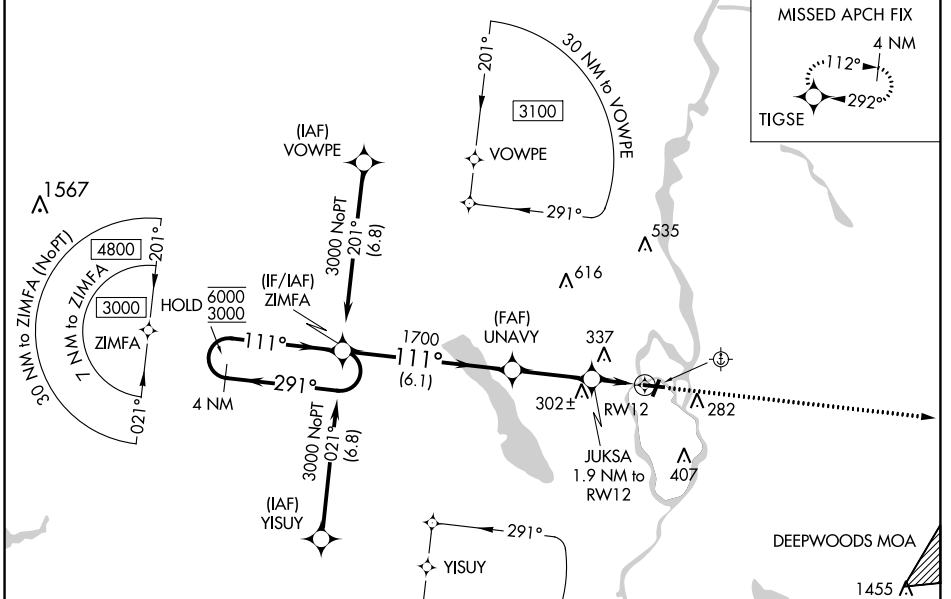
DEWITT FLD/OLD TOWN MUNI (OLD)

RNP APCH - GPS.

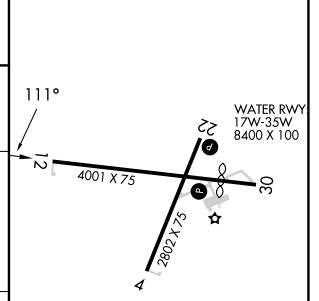
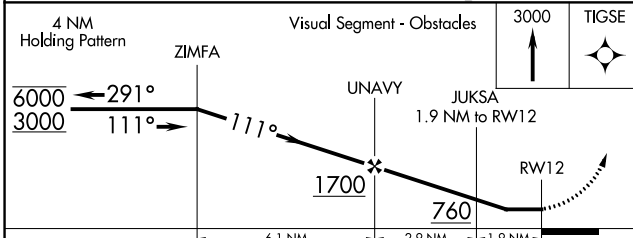
NA Circling NA to Rwys 17W and 35W. Procedure NA at night. Rwy 12 helicopter visibility reduction below 1 SM NA. Use Bangor Intl altimeter setting; when not received, use Bar Harbor altimeter setting and increase all MDA 60 feet and increase LNAV Cat C 1/2 SM and Circling Cat C visibility 1/4 SM. Procedure NA when Deepwoods MOA is active.

MISSED APPROACH: Climb to 3000 direct TIGSE and hold, continue climb-in-hold to 3000.

BGR ASOS 127.75	BANGOR APP CON 118.925 239.3	UNICOM 122.8 (CTAF) 0
---------------------------	--	---------------------------------



ELEV 127	TDZE 125
----------	----------



CATEGORY	A	B	C	D
LNAV MDA	560-1	435 (500-1)	560-1 1/4 435 (500-1 1/4)	NA
CIRCLING	640-1 513 (600-1)	700-1 573 (600-1)	760-1 3/4 633 (700-1 3/4)	NA

REIL Rwy 4 0

MIRL Rwy 4-22 0

MIRL Rwy 12-30

NE-1, 22 FEB 2024 to 21 MAR 2024

NE-1, 22 FEB 2024 to 21 MAR 2024

WAAS CH 61044 W22A	APP CRS 217°	Rwy Idg TDZE Apt Elev	2802 127 127
--	------------------------	-----------------------------	---

RNAV (GPS) RWY 22

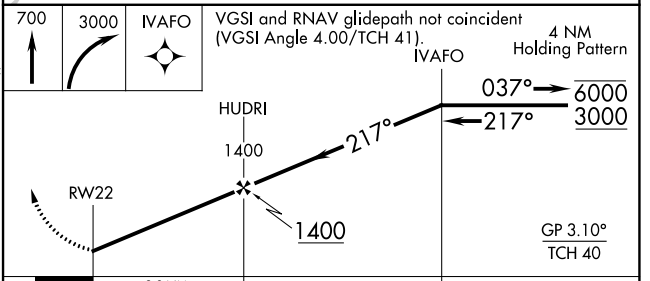
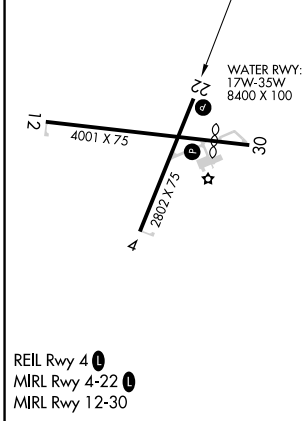
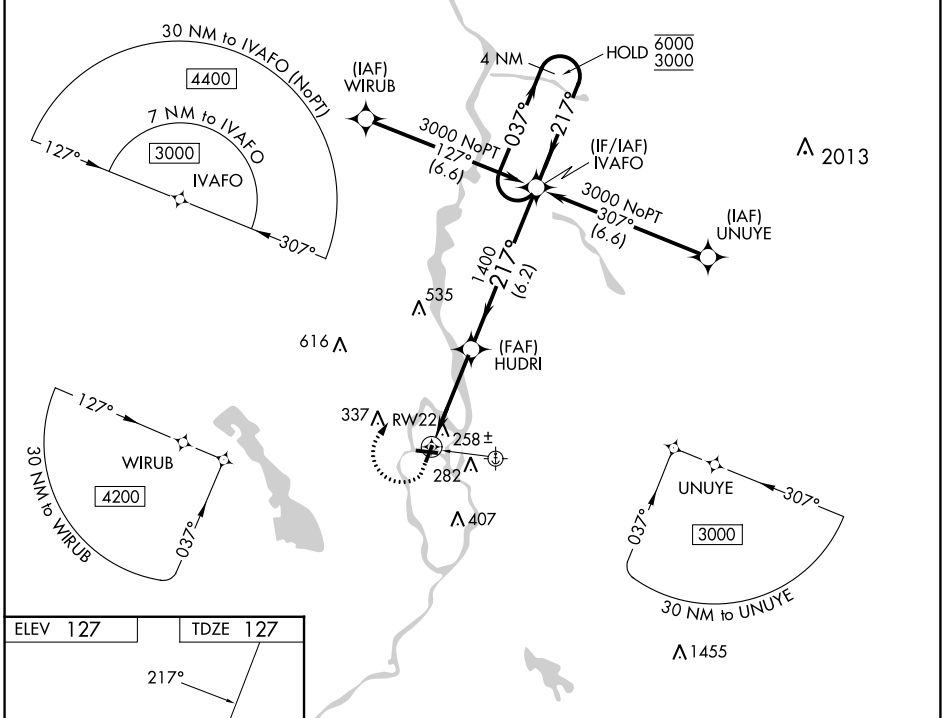
DEWITT FLD/OLD TOWN MUNI (OLD)

RNP APCH - GPS.

⚠ Circling NA to Rwy 17W and 35W. Circling Rwy 4, 12, 22, 30 NA at night.
 ⚠ Rwy 22 helicopter visibility reduction below 3/4 SM NA. Use Bangor Inlt altimeter setting; when not received, use Bar Harbor altimeter setting and increase all MDA 60 feet and increase LPV visibility all Cats 1/2 SM.

MISSED APPROACH: Climb to 700 then climbing right turn to 3000 direct IVAFO and hold, continue climb-in-hold to 3000.

BGR ASOS 127.75	BANGOR APP CON 118.925 239.3	UNICOM 122.8 (CTAF) 0
---------------------------	--	---------------------------------



CATEGORY	A	B	C	D
LPV DA	467-1	340 (400-1)		NA
LNAV MDA	560-1	433 (500-1)		NA
C CIRCLING	640-1 513 (600-1)	700-1 573 (600-1)		NA

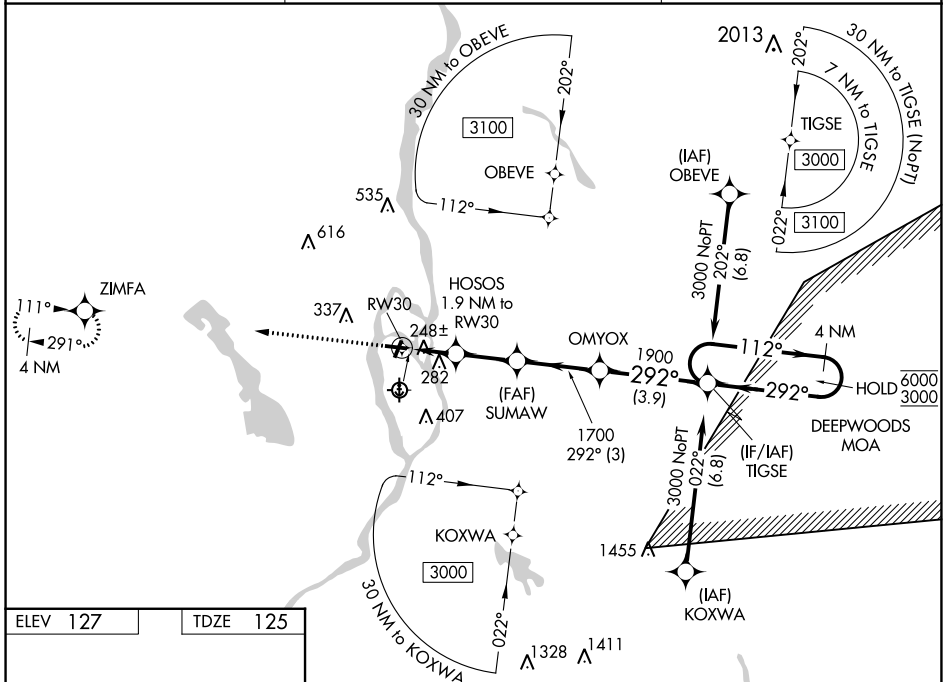
WAAS CH 72744 W30A	APP CRS 292°	Rwy Idg TDZE 125 Apt Elev 127	3312
--	------------------------	---	-------------

RNAV (GPS) RWY 30

DEWITT FLD/OLD TOWN MUNI (OLD)

RNP APCH - GPS.		MISSED APPROACH: Climb to 3000 direct ZIMFA and hold, continue climb-in-hold to 3000.
NA	Circling NA to Rwys 17W and 35W. Procedure NA at night. Rwy 30 helicopter visibility reduction below 3/4 SM NA. Use Bangor Intl altimeter setting; when not received, use Bar Harbor altimeter setting and increase all MDA 60 feet and increase LP and Circling Cat C visibility 1/4 SM. Procedure NA when Deepwoods MOA is active.	

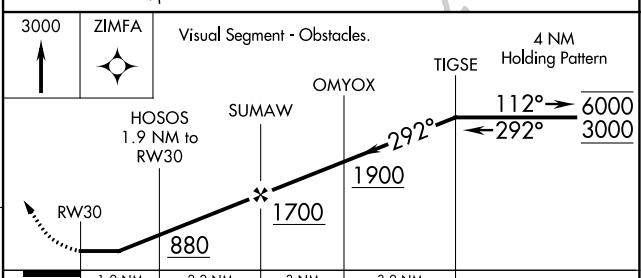
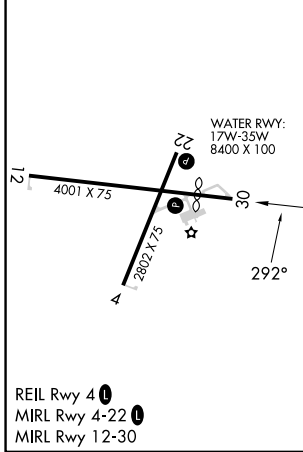
BGR ASOS 127.75	BANGOR APP CON 118.925 239.3	UNICOM 122.8 (CTAF) 1
---------------------------	--	--



NE-1, 22 FEB 2024 to 21 MAR 2024

NE-1, 22 FEB 2024 to 21 MAR 2024

ELEV 127	TDZE 125
-----------------	-----------------



CATEGORY	A	B	C	D
LP MDA	540-1	415 (500-1)	540-1 1/8 415 (500-1 1/8)	NA
LNAV MDA	580-1	455 (500-1)	580-1 3/8 455 (500-1 3/8)	NA
C CIRCLING	640-1 513 (600-1)	700-1 573 (600-1)	760-1 3/4 633 (700-1 3/4)	NA

VORTAC BGR 114.8 Chan 95	APP CRS 251°	Rwy Idg TDZE Apt Elev	2802 127 127
--	------------------------	-----------------------------	---

VOR RWY 22

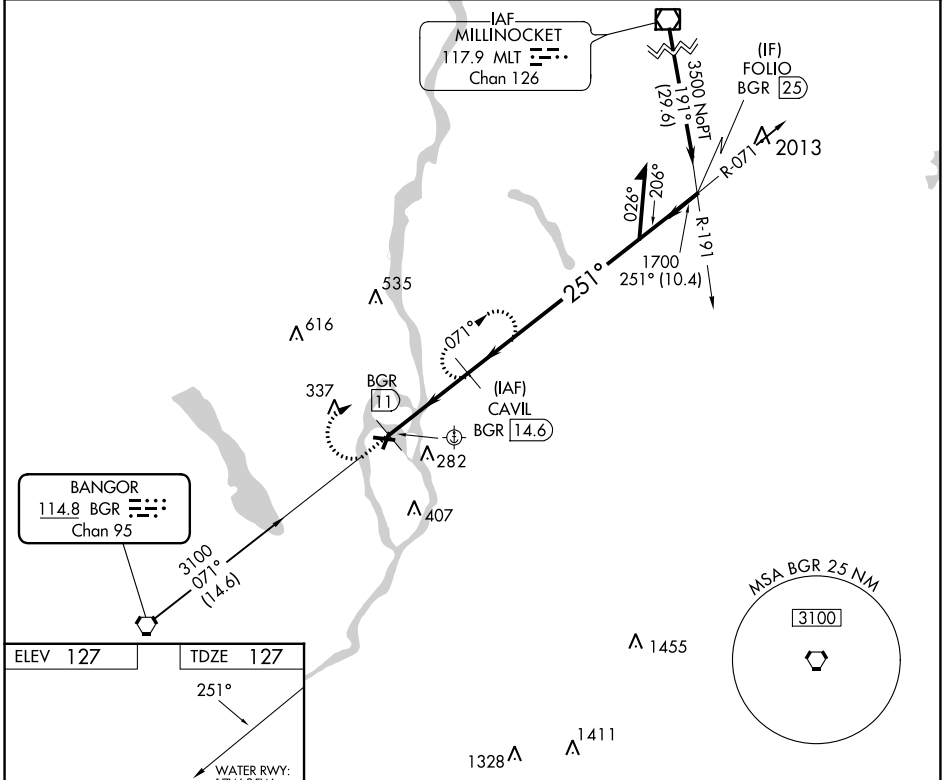
DEWITT FLD/OLD TOWN MUNI (OLD)

DME required.

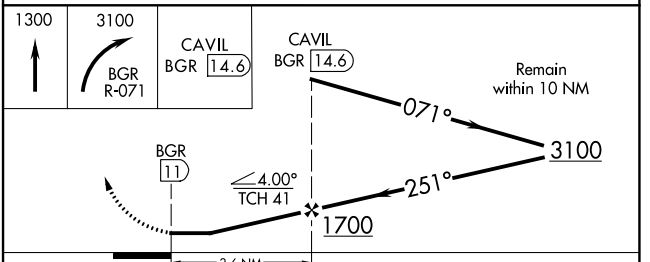
NA Circling NA to Rws 17W and 35W. Procedure NA at night. Rwy 22 helicopter visibility reduction below 1 SM NA. Use Bangor Intl altimeter setting; when not received, use Bar Harbor altimeter setting and increase all MDA 60 feet.

MISSED APPROACH: Climb to 1300 then climbing right turn to 3100 on BGR VORTAC R-071 to CAVIL/BGR 14.6 DME and hold, continue climb-in-hold to 3100.

BGR ASOS 127.75	BANGOR APP CON 118.925 239.3	UNICOM 122.8 (CTAF)
---------------------------	--	-------------------------------



ELEV 127	TDZE 127
<p>REIL Rwy 4 4</p> <p>MIRL Rws 4-22 1</p> <p>MIRL Rws 12-30</p>	
FAF to MAP 3.6 NM	
Knots	60 90 120 150 180
Min:Sec	3:36 2:24 1:48 1:26 1:12



CATEGORY	A	B	C	D
S-22	640-1	513 (600-1)	NA	
CIRCLING	640-1	700-1	NA	
	513 (600-1)	573 (600-1)		

NE-1, 22 FEB 2024 to 21 MAR 2024

NE-1, 22 FEB 2024 to 21 MAR 2024