

HI-ILS Z or LOC/DME Z RWY 19L

AL-5079 (USN)

MERIDIAN NAS (MCG CAIN FIELD) (KNMM)

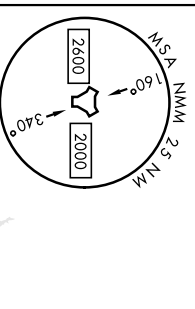
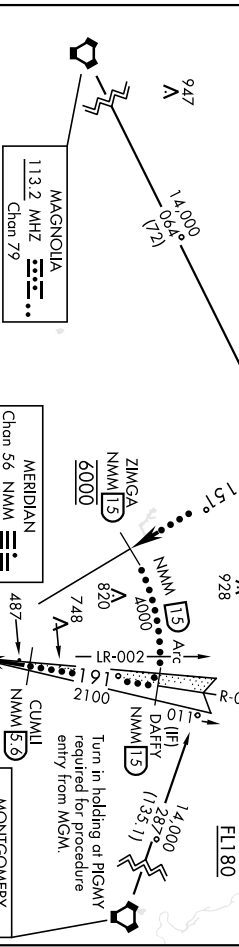
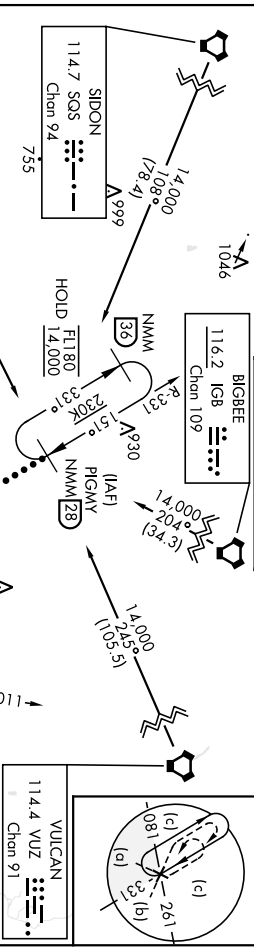
LOC /NMNM	APCH CRS	Req'd Idg	8000
109.7	191°	TDZE	316
		Appt Elev	316

V * When AIS inop, increase vis to 1/2 mile.
 ** When AIS inop, increase vis to 1/4 miles.



MISSED APPROACH: Climb to 800 then climbing left turn to 2100 intercept NMM R-141 to UBERY and hold.

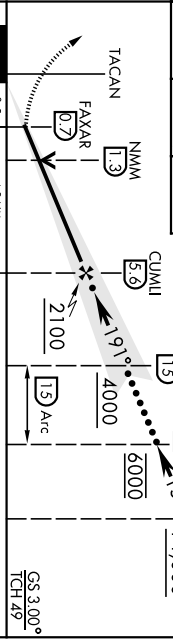
ATIS *	APP CON	NAVY MCG CAIN TOWER *	GND CON	CLNC DEL	ASR/ PAR
290.525	120.95 276.4	126.2 340.2	336.4	301.0	



EMERG SAFE ALT 100 NM 3700



800	2100	PIGMY 28
NMM R-141	UBERY 10	



CATEGORY	C	D	E
S-ILS 19L *	516-1/2	200	(200-1/2)
S-LOC 19L**	740-3/4	424	(500-3/4)
CIRCLING	840-1 1/2	880-2	1080-2 3/4
	524 (600-1 1/2)	564 (600-2)	764 (800-2 3/4)



HI-ILS Z or LOC/DME Z RWY 19L

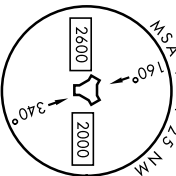
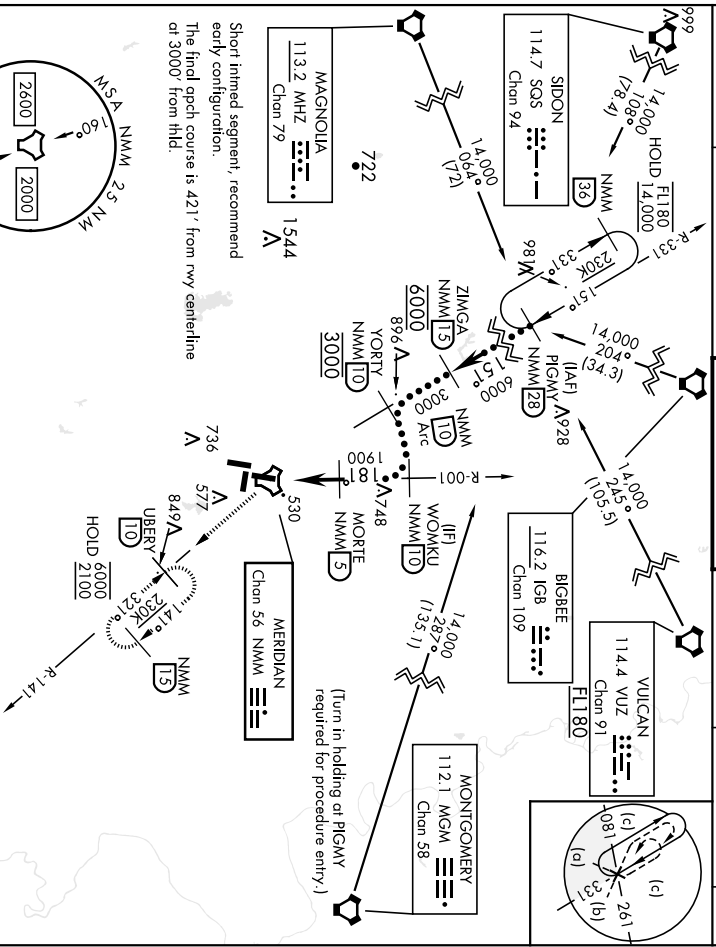
TACAN NMM	APCH CRS	Req'd Idg	8000
Chon 56	181°	TDZE	316
		Appt Elev	316

A1-5079 (USN)

MERIDIAN NAS (M/C CAIN FIELD) (KNMM)

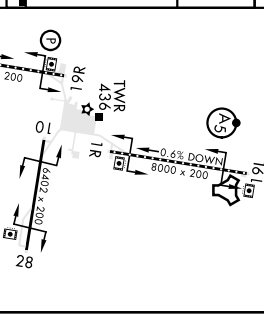
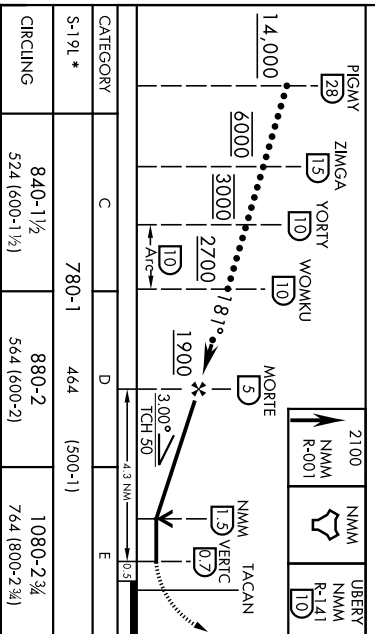
DME required:	MAISR	MISSED APPROACH:	Climb to 2100 via NMM R-001 to TACAN then via R-141 to UBERY and hold.
* When A1S Inop, increase vis to 1 3/8 miles.	A5		

ATIS *	APP CON	NAVY MC CAIN TOWER *	GND CON	CLNC DEL	ASR/ PAR
290 525	120.95 276.4	126.2 340.2	336.4	301.0	



ELEV	316	TDZE	316
------	-----	------	-----

EMERG SAFE ALT 100 NM 3700



Wave-Off lgt RWY 1L, 19L
HLRL all runways

MERIDIAN, MISSISSIPPI

32°33'N -88°33'W

MERIDIAN NAS (M/C CAIN FIELD) (KNMM)

Andr 5 08SEP22

HI-TACAN Z RWY 19L

TACAN NMM	ARCH CRS	Req./Idg	8003
Chon 56	025°	TDZE	254
		Appt Elev	316

AL-5079 [USN]

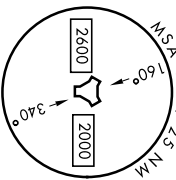
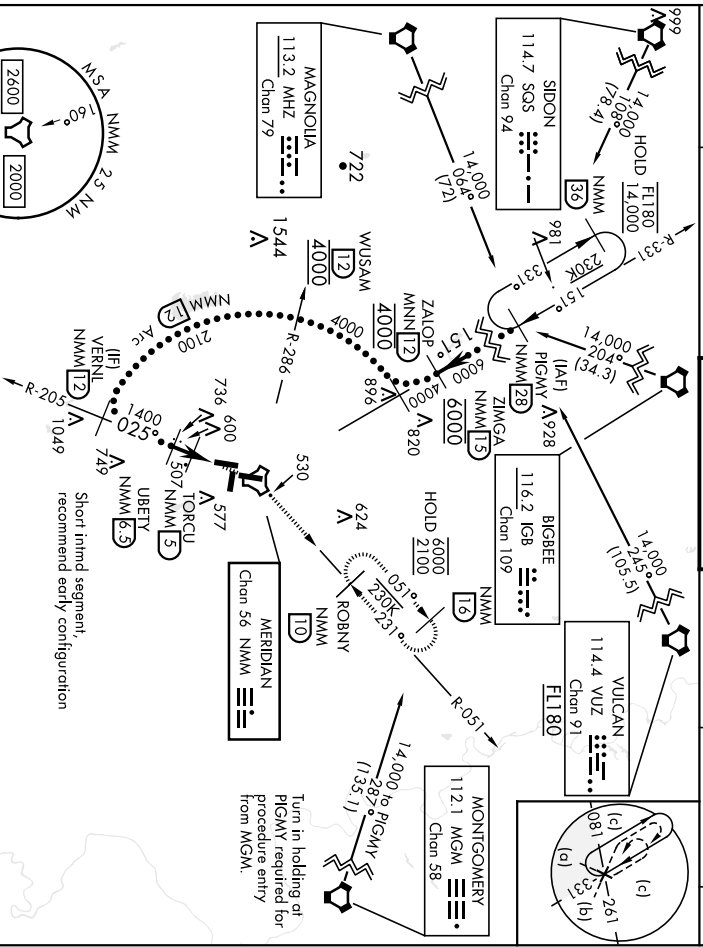
MERIDIAN NAS (MCG CAIN FIELD) (KNMM)

* When ALS Inop, increase vis to 1 3/8 miles.

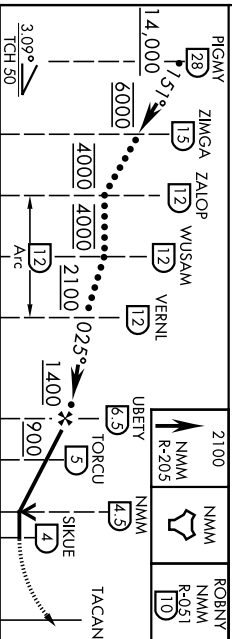


MISSED APPROACH: Climb to 2100 via NMM R-205 to NMM TACAN then via R-051 to ROBNY and hold.

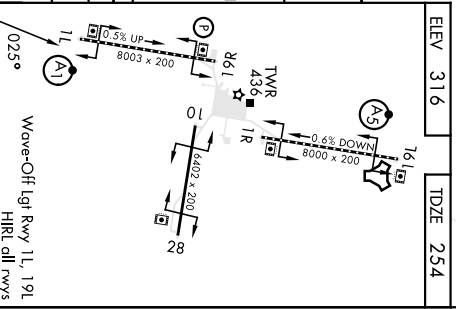
ATIS *	APP CON	NAVY MCG CAIN TOWER *	GND CON	CLNC DEL	ASR/ PAR
290 525	120.95 276.4	126.2 340.2	336.4	301.0	



EMERG SAFE ALT 100 NM 3700



CATEGORY	C	D	E
S-1L *	760-1	506 (500-1)	
CIRCLING	840-1 1/2 524 (600-1 1/2)	880-2 564 (600-2)	1080-2 3/4 764 (800-2 3/4)



ILS W or LOC/DME W RWY 19L

A1-5079 [USN] MERIDIAN NAS (MC CAIN FIELD) (KNMM)

LOC/DME I-NMM Chon 34	APCH CRS 191°	Fix/Ide TDZE Arpt Elev	8000 316 316
--------------------------	------------------	------------------------------	--------------------

RADAR required

▼ When ALS inop, increase vis to 3/4 mile.
** When ALS inop, increase CAT AB vis to 1 mile,
CAT CD vis to 1/2 miles.

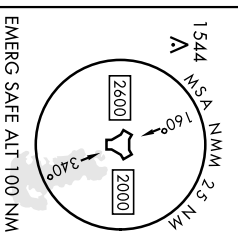
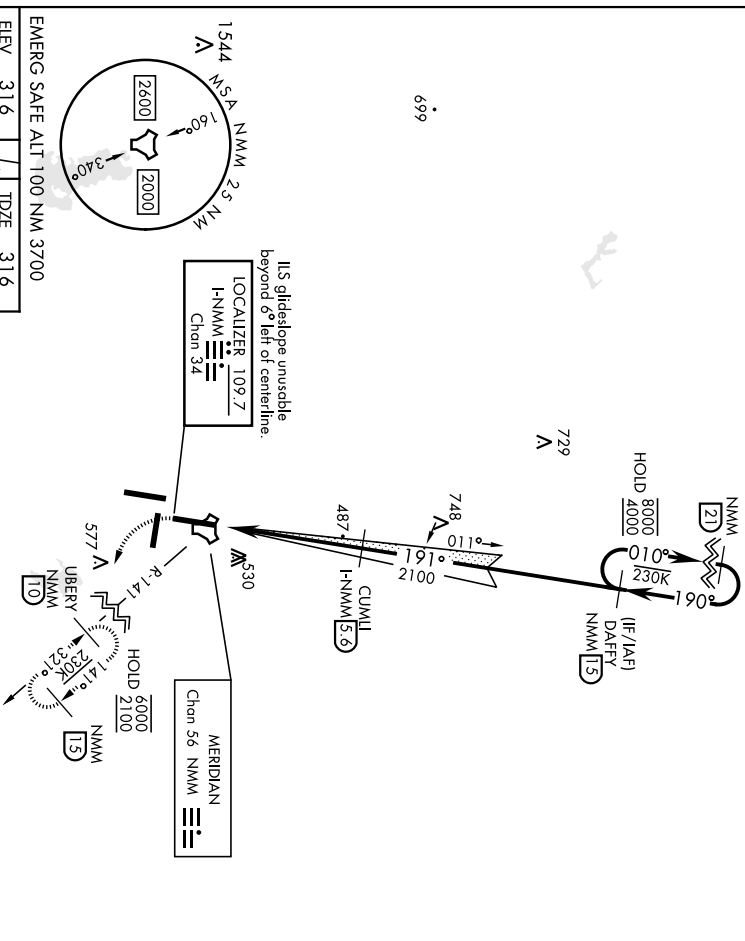


MISSED APPROACH: Climb to 800, then climbing left turn
to 2100 to intercept NMM R-141 to UBERY and hold.

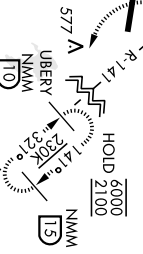
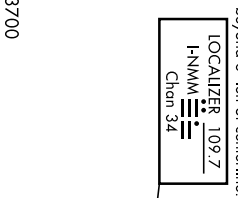
ATIS ★ 290.525	APP CON 120.95 276.4
-------------------	-------------------------

NAVY MC CAIN TOWER ★ 126.2 340.2

GND CON 336.4	CINC DEL 301.0	ASR/PAR
------------------	-------------------	---------



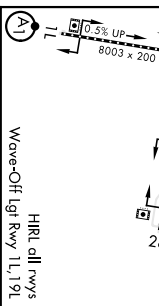
ILS glide slope unusable
beyond 6° left of centerline.



EMERG SAFE ALT 100 NM 3700

ELEV 316	TDZE 316
----------	----------

800	2100	UBERY	CUMLI	DAFFEY	NMM
800	2100	NMM NMM	I-NMM	NMM NMM	NMM
R-141	R-141	10	59	15	21
					010°
					190°
					4000
					8000
					4000
					010°
					190°
					4000
					8000
					4000
					GS 3.00°
					CH 49



CATEGORY	A	B	C	D
S-ILS 19L *	516-1/2	500-1/2	200	200-1/2
S-LOC 19L **	740-1/2	424	740-3/4	424
CIRCLING	820-1	840-1	840-1/2	880-2
	504 (600-1)	524 (600-1)	524 (600-1/2)	564 (600-2)

HRL all rwy's
Wave-Off Igt Rwy 1L, 19L

32° 33' N 88° 33' W MERIDIAN NAS (MC CAIN FIELD) (KNMM)

ILS W or LOC/DME W RWY 19L

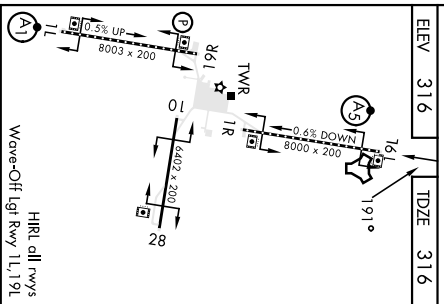
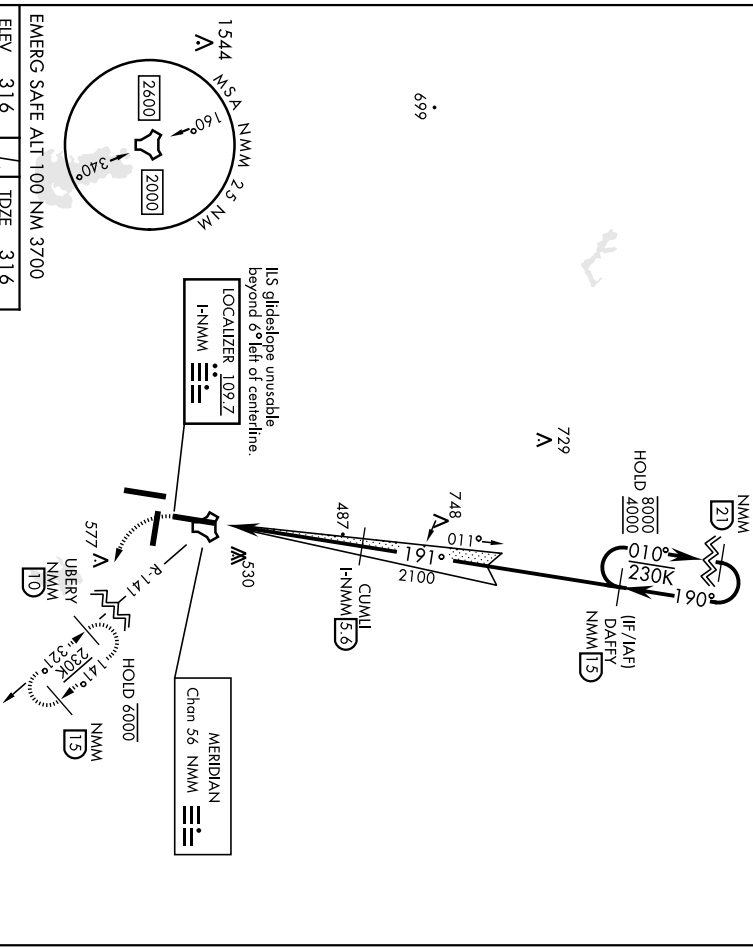
Orig 01DEC22

ILS Y or LOC/DME Y RWY 19L

A1-5079 [USN] MERIDIAN NAS (M/C CAIN FIELD) (KNMM)

LOC INMM 109.7	APCH CRS 191°	Req'd Idg TDZE 316	App Elev 316
RADAR required. * When ALS inop, increase vis to 3/4 mile. ** When ALS inop, increase CAT AB vis to 1 mile, CAT CD vis to 1/2 miles.			
ATIS * 290.525	APP CON 120.95 276.4	NAVV M/C CAIN TOWER * 126.2 340.2	

MAISR 	MISSED APPROACH: Climb to 800, then climbing left turn to 2100 to intercept NMM R-141 to UBERY and hold.	GND CON 336.4	CLNC DEL 301.0	ASR/PAR
-----------	--	-------------------------	--------------------------	---------



CATEGORY	A	B	C	D
S-ILS 19L *	516-1/2	200	740-1/2	880-2
S-LOC 19L **	740-1/2 424 (500-1/2)	740-3/4 424 (500-3/4)	840-1 1/2 424 (500-1/2)	880-2
CIRCLING	820-1 504 (600-1)	840-1 524 (600-1)	840-1 1/2 524 (600-1/2)	880-2 564 (600-2)

MERIDIAN, MISSISSIPPI
 HRL all rwy's
 Wave-Off Igr Rwy 1L, 19L
 32° 33' N-88° 33' W MERIDIAN NAS (M/C CAIN FIELD) (KNMM)
 Orig 03NOV22
ILS Y or LOC/DME Y RWY 19L

MERIDIAN, MISSISSIPPI

RNAV (GPS) RWY 19L

APCH CRS	Rwy Idg	8000
191°	TDZE	316
	Arprt Elev	316

AL-5079 (USN)

MERIDIAN NAS (MC CAIN FLD) (KNMM)

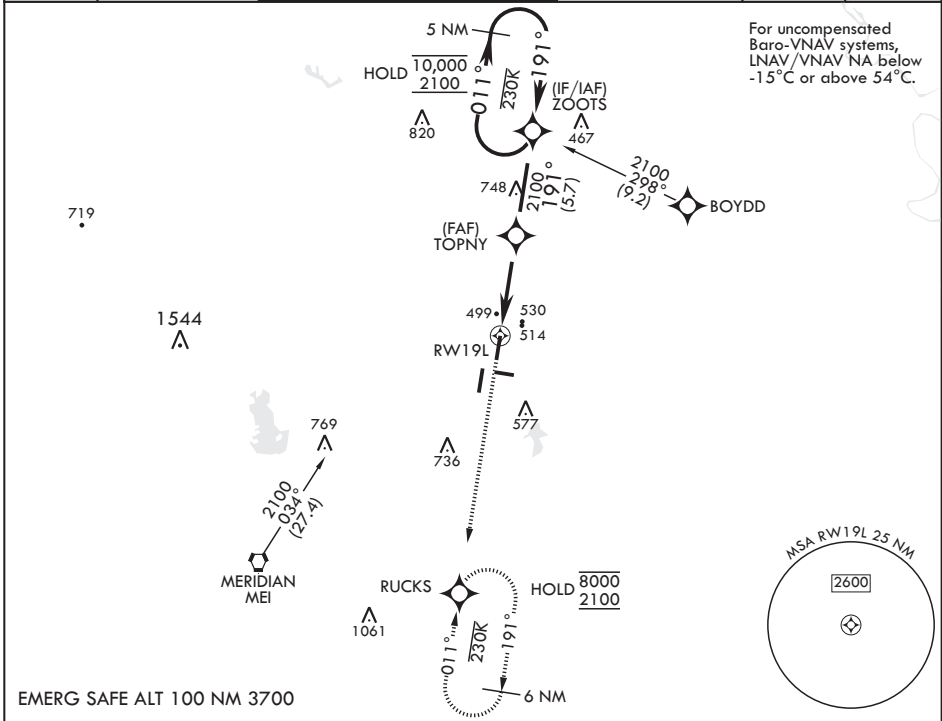
RNP APCH.

▼ * When ALS inop, increase CAT AB vis to 1 mile, increase CAT CDE to 1 3/8 miles.
 ** When ALS inop, increase vis to 1 3/8 miles.



MISSED APPROACH: Climb to 2100 direct RUCKS and hold.

ATIS★ 290.525	APP CON 120.5 269.325 S 379.275 N 120.95 276.4 W 121.275 348.7 E	MC CAIN TOWER★ 126.2 340.2 RWY 01L, 19L AND 28 126.2 360.2 RWY 01R, 19R AND 10	MC CAIN GND CON 336.4	CLNC DEL 301.0	ASR/PAR
------------------	--	--	--------------------------	-------------------	---------

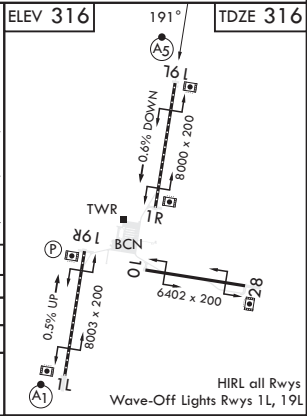
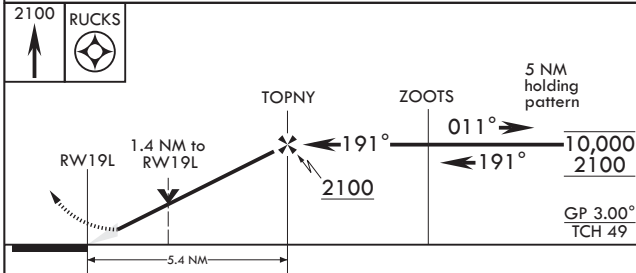


For uncompensated Baro-VNAV systems, LNAV/VNAV NA below -15°C or above 54°C.

SC-4, 22 FEB 2024 to 21 MAR 2024

SC-4, 22 FEB 2024 to 21 MAR 2024

EMERG SAFE ALT 100 NM 3700



CATEGORY	A	B	C	D	E
LNAV/VNAV DA**	800-1		484	(500-1)	
LNAV MDA*	800-½	484 (500-½)	800-1	484	(500-1)
CIRCLING	820-1 504 (600-1)	840-1 524 (600-1)	840-1½ 524 (600-1½)	880-2 564 (600-2)	1080-2¾ 764 (800-2¾)

MERIDIAN, MISSISSIPPI

32°33'N - 88°33'W

MERIDIAN NAS (MC CAIN FLD) (KNMM)

Amdt 4 08SEP22

RNAV (GPS) RWY 19L

MERIDIAN, MISSISSIPPI

RNAV (GPS) RWY 1L

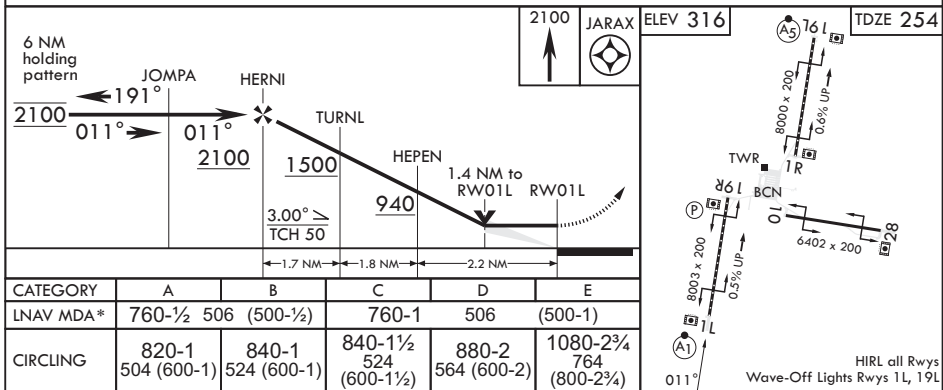
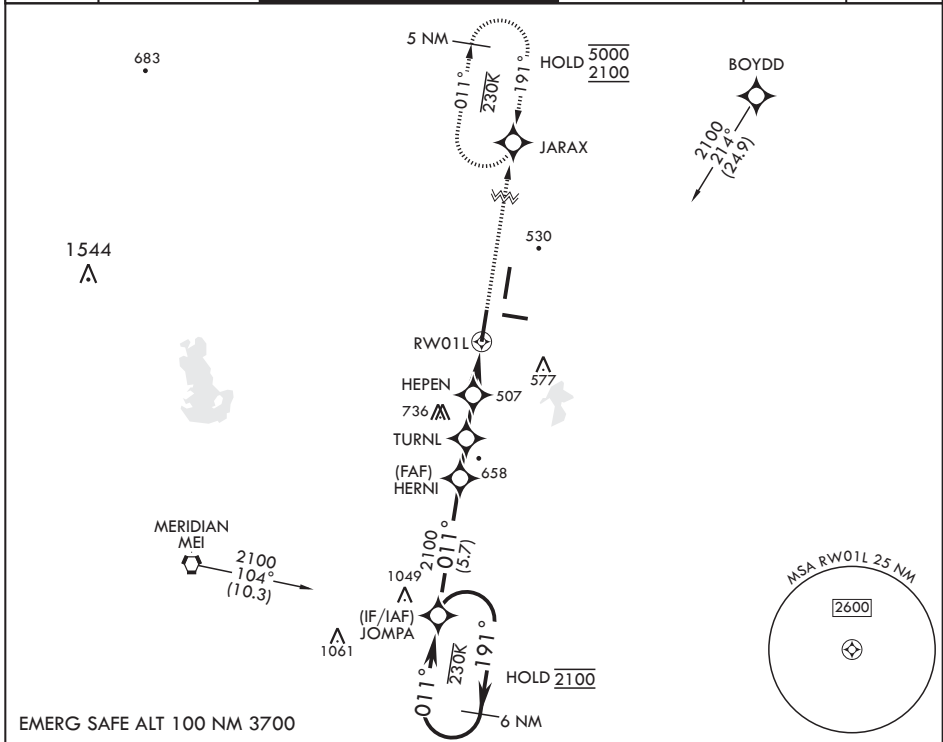
APCH CRS	Rwy Idg	8003
011°	TDZE	254
	Arprt Elev	316

AL-5079 (USN)

MERIDIAN NAS (MC CAIN FLD) (KNMM)

RNP APCH.	ALSF-1	MISSED APPROACH: Climb to 2100 direct JARAX and hold.
<p>▼ * When ALS inop, increase CAT AB vis to 1 mile, CAT CDE to 1 3/8 miles.</p>		

ATIS * 290.525	APP CON 120.5 269.325 S 379.275 N 120.95 276.4 W 121.275 348.7 E	MC CAIN TOWER * 126.2 340.2 RWY 01L, 19L AND 28 126.2 360.2 RWY 01R, 19R AND 10	MC CAIN GND CON 336.4	CLNC DEL 301.0	ASR/PAR
--------------------------	--	---	---------------------------------	--------------------------	---------



MERIDIAN, MISSISSIPPI

32°33'N - 88°33'W

MERIDIAN NAS (MC CAIN FLD) (KNMM)

Amdt 4 08SEP22

RNAV (GPS) RWY 1L

SC-4, 22 FEB 2024 to 21 MAR 2024

SC-4, 22 FEB 2024 to 21 MAR 2024

HIRL all Rwys
Wave-Off Lights Rwy 1L, 19L

TACAN NMM Chon 56	APCH CRS 181°	Fix/Idg TDZE Appr Elev. 316	8000
-----------------------------	-------------------------	--	-------------

AI-5079 [USN]

MERIDIAN NAS (MCG CAIN FIELD) (KNMM)

RADAR required:
 ▼ * When A15 Inop, increase CAT A/B vis to 1 mile;
 CDE vis to 1½ miles.



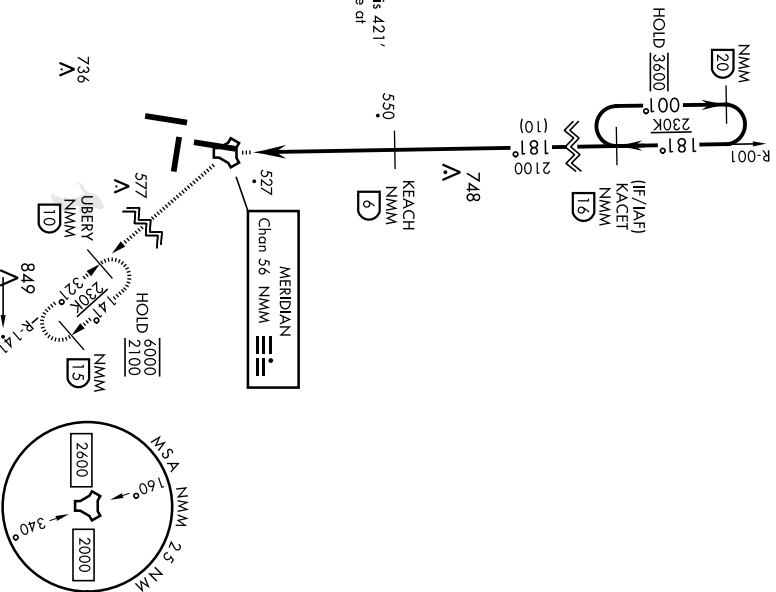
MISSED APPROACH: Climb to 2100 direct NMM TACAN then via R-141 to UBERY and hold.

ATS ★ 290.525	APP CON 120.95 276.4	NAVY MCG CAIN TOWER ★	126.2 340.2
-------------------------	--------------------------------	-----------------------	--------------------

GND CON 336.4	CLNC DEL 301.0	ASR/ PAR
-------------------------	--------------------------	-------------

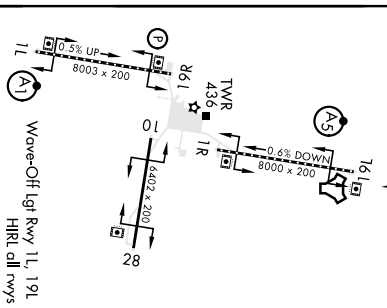
699

The final apch course is 421°
 left from rwy centerline of
 3000° from hhd.



EMERG SAFE ALT 100 NM 3700

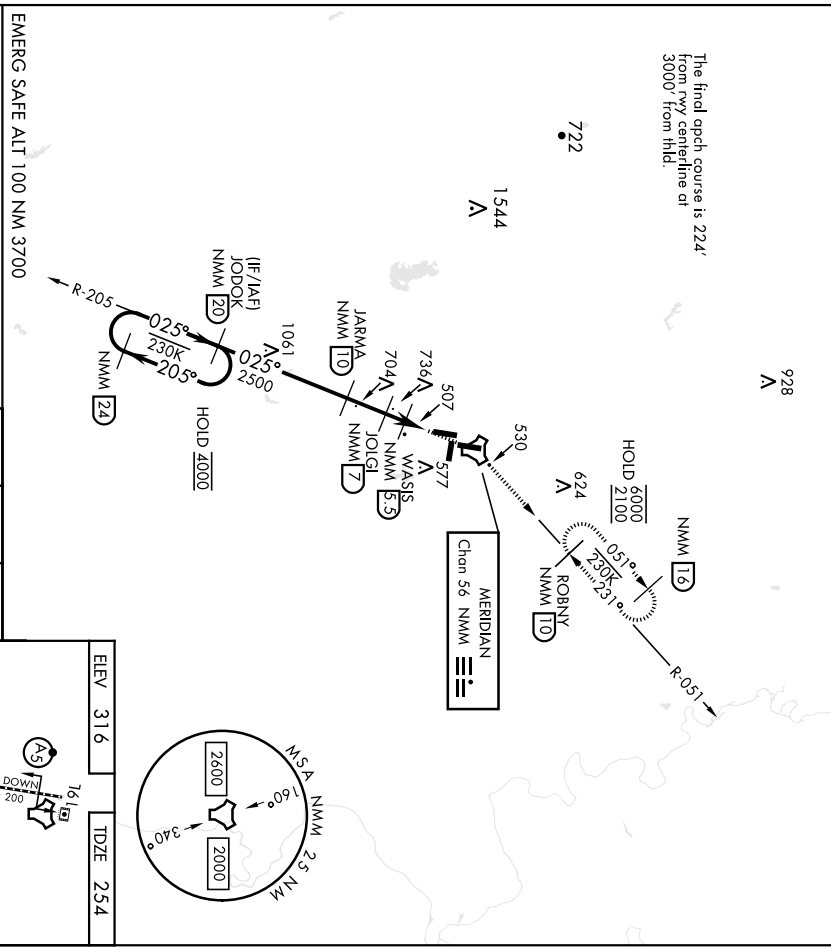
ELEV 316	TDZE 316
----------	----------



CATEGORY	A		B		C		D		E	
	800-1/2	484 (500-1/2)	840-1	524 (600-1)	800-1	484 (500-1)	880-2	564 (600-2)	1080-2 3/4	764 (800-2 3/4)
S-19L *	820-1	504 (600-1)	840-1	524 (600-1)	800-1	484 (500-1)	880-2	564 (600-2)	1080-2 3/4	764 (800-2 3/4)
CIRCLING	820-1	504 (600-1)	840-1	524 (600-1)	800-1	484 (500-1)	880-2	564 (600-2)	1080-2 3/4	764 (800-2 3/4)

TACAN Y RWY 1L

TACAN NMM Chon 56	APCH CRS 025°	Req'd Idg TDZE 254 Appt Elev 316	8003
AL-5079 [USN]		MERIDIAN NAS (MCG CAIN FIELD) (KNMM)	
RADAR required: ▼ * When ALS inop, increase CAT A/B vis to 1 mile; CAT C/D vis to 1/8 miles.		ALSF-1 A1	MISSED APPROACH: Climb to 2100 direct NMM TACAN then via R-051 to ROBNY and hold.
ATIS * 290 525	APP CON 120 95 276.4	NAVY MCG CAIN TOWER * 126.2 340.2	GND CON 336.4
			CLNC DEL 301.0
			ASR/ PAR



CATEGORY	A	B	C	D	E
S-1L *	760-1/2	506 (500-1/2)	840-1	506 (500-1)	1080-2 3/4
CIRCLING	820-1	840-1	840-1 1/2	880-2	1080-2 3/4
	504 (600-1)	524 (600-1)	524 (600-1 1/2)	564 (600-2)	764 (800-2 3/4)

Waves-Off Igr RWY 1L, 19L	Wave-Off Igr RWY 1R, 19R
HRL call rwy's	

MERIDIAN, MISSISSIPPI 32°33' N -88°33' W MERIDIAN NAS (MCG CAIN FIELD) (KNMM)
 Arndt 3 08SEP22
TACAN Y RWY 1L