

[UN]

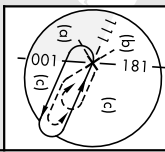
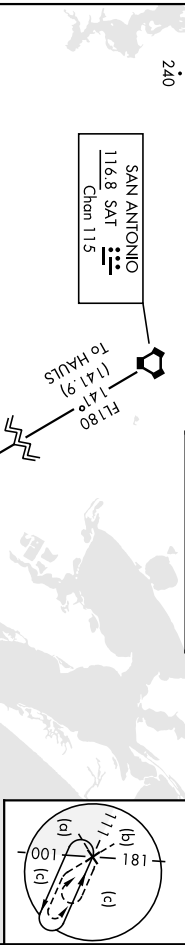
CORPUS CHRISTI NAS (TRUAX FLD) (KNGP)

TACAN NGP Chan 87	APCH CRS 291°	Rev./Idg TDZE 17	8001 18
----------------------	------------------	------------------------	------------

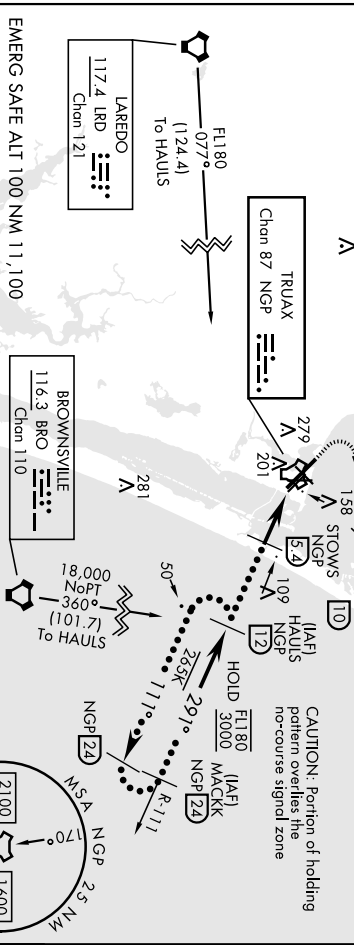
When local dihimeter setting not received, use Corpus Christi (CRP) Intl dihimeter setting.

MISSED APPROACH: Climb to 1600 direct NGP TACAN and turn right to intercept R-041 to RYNOL and hold.

ATS ★	APP CON	NAVY CORPUS TOWER ★	GND CON	CINC DEL	ASR/ PAR
127.9 290.9	127.5 259.3	134.85 340.2	118.7 257.85	314.3	



CAUTION: Portion of holding pattern overlaps the no-co-course signal zone

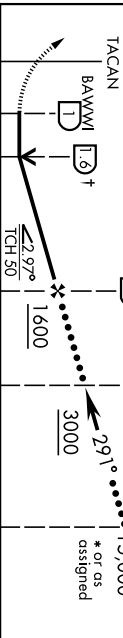


SC-3, 22 FEB 2024 to 21 MAR 2024

SC-3, 22 FEB 2024 to 21 MAR 2024

1 600	NGP	RYNOL R-041 10	↑VDP NA when using Corpus Christi (CRP) Intl dihimeter setting	HAULS 17	MACKK 24
EMERG SAFE ALT 100 NM, 11,100					
VGS1 TCH not coincident (45').					

ELEV	18	TDZE	17
------	----	------	----



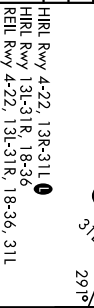
CATEGORY	C	D	E
----------	---	---	---



S-311	520-1½ (600-1½)	420-1½ 403 (500-1½)	580-2 562 (600-2)
CRCLING	502		
CORPUS CHRISTI (CRP) INTL ALTIMETER SETTING			



S-311	540-1½ (600-1½)	460-1½ 443 (500-1½)	620-2 620-2½ 602 (700-2)	620-2½ 602 (700-2½)
CRCLING	522			



CORPUS CHRISTI, TEXAS  
CORPUS CHRISTI NAS (TRUAX FLD) (KNGP)

Orig 30NOV23

HI-TACAN W RWY 31L



SC-3, 22 FEB 2024 to 21 MAR 2024

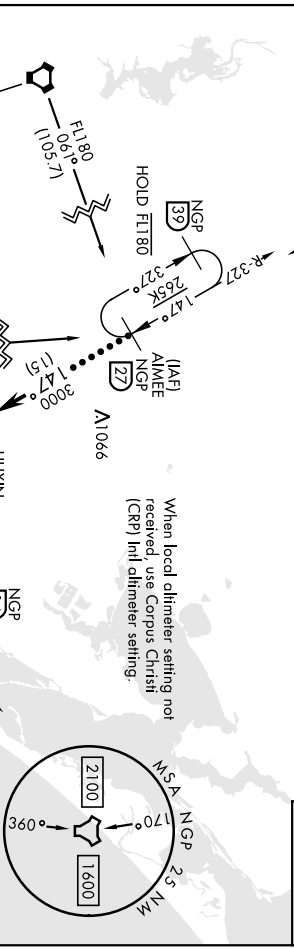
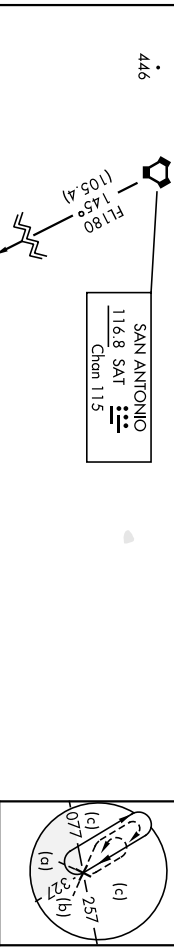
TACAN NGP Chom 87	APCH CRS 147°	Rwy/Idg TDZE Aspl Elev	8001 13 18
----------------------	------------------	------------------------------	------------------

[USN]	CORPUS CHRISTI NAS (TRUAX FLD) (KNGP)
-------	---------------------------------------

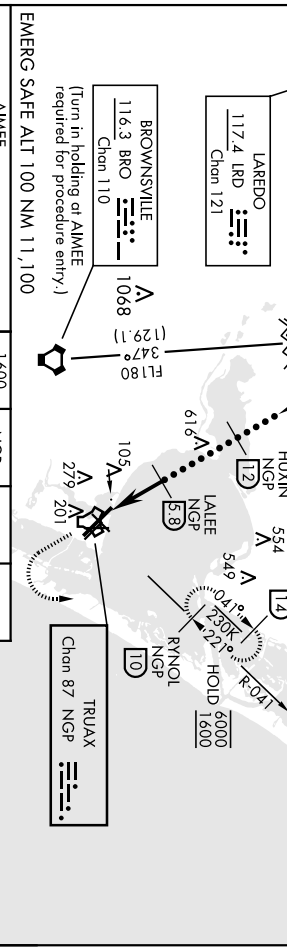
★ When ALS Inop, increase vis to 1½ miles.

SALS MISSED APPROACH: Climb to 1600 direct NGP TACAN and turn left to intercept R-041 to RYNOL and hold.

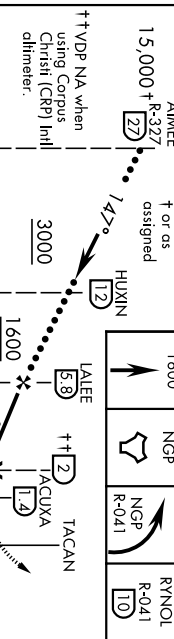
ATS ★ 127.9 290.9	APP CON 120.9 348.725	NAVY CORPUS TOWER ★ 134.85 340.2	GND CON 118.7 257.85	CINC DEL 314.3	ASR/ PAR
----------------------	--------------------------	-------------------------------------	-------------------------	-------------------	-------------



When local altimeter setting not received, use Corpus Christi (CRP) Intl altimeter setting.



EMERG SAFE ALT 100 NM 11,100



ELEV 18	TDZE 13
---------	---------

CATEGORY	C	D	E
S-138*	400-7½ 387	400-7½	
QIRCLING	520-1½ 502 (600-1½)	580-2 562 (600-2)	



S-138 *	420-1 407 (500-1)	620-2¼ (500-1)	
QIRCLING	540-1½ 522 (600-1½)	620-2 602 (700-2)	620-2¼ 602 (700-2¼)

CORPUS CHRISTI, TEXAS 27°42'N-97°17'W CORPUS CHRISTI NAS (TRUAX FLD) (KNGP)  
 Orig 30NOV23

HI-TACAN X RWY 13R

# ILS Y or RNAV (GPS) RWY 13R

[USN] CORPUS CHRISTI NAS (TRUAX FLD) (KNGP)

LOC INGP <b>111.3</b>	APCH CRS <b>132°</b>	Req'd Idg TDZE 13 Apl'd Elev <b>18</b>	8001
--------------------------	-------------------------	--	------

RNP APCH for LNAV.  
RNAVI - GPS for ILS.

▲\*When AIS top, increase CAT AB vis to 1 mile. CAT CD vis to 1/2 mile. When local altimeter setting not received, use Corpus Christi (CRP) Intl altimeter setting.



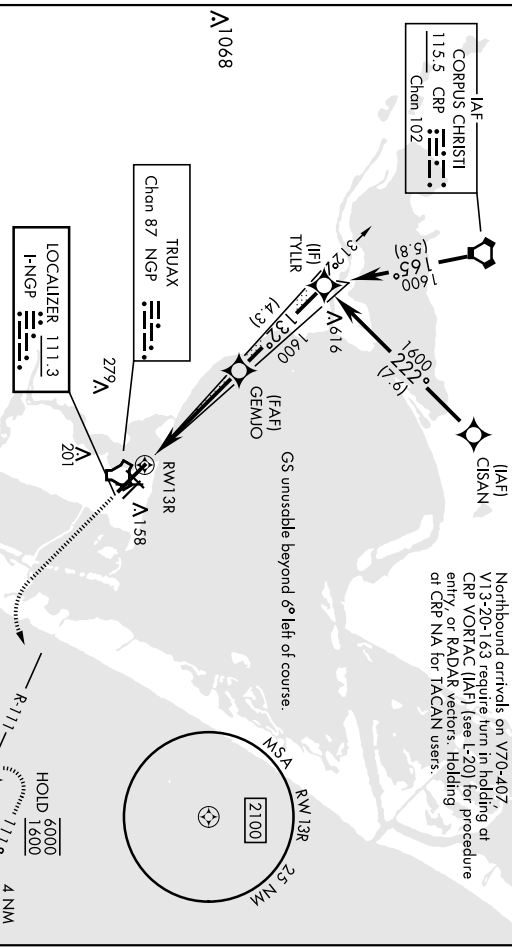
MISSED APPROACH: Climb to 600, then climbing left turn to 1600 direct HAUIS and hold.

ATIS *	APP CON	NAVY CORPUS TOWER *	GND CON	CINCLC DEL	ASR/ PAK
<b>127.9 290.9</b>	<b>128.675 343.75</b>	<b>134.850 340.2</b>	<b>118.7 257.85</b>	<b>314.3</b>	

IAF  
CORPUS CHRISTI  
115.5 CRP  
Chan 102

Northbound arrivals on V70-407  
V73-203-153 require turn in holding at  
CRP VORTAC (IAF) (see 1-20) for procedure  
entry on RADAR via ENR. Holding  
at CRP NA for TACAN users.

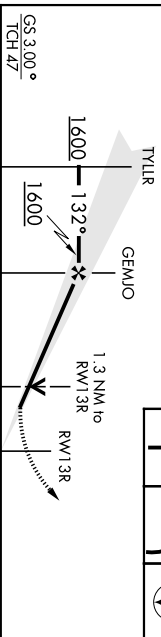
GS unusable beyond 6° left of course.



A1068

EMERG SAFE ALT 100 NM 11,100

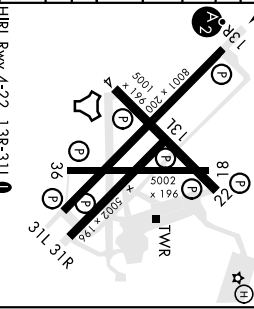
VDP NA when using Corpus Christi (CRP) Intl altimeter setting



CATEGORY	A	B	C	D
S-ILS 13R	213-¾ 200 (200-¾)			
LNAV MDA*	460-¾ 447 (500-¾)	460-1 447 (500-1)	460-1 447 (500-1)	580-2 (800-2)
CIRCLING	442 (500-1)	462 (500-1)	502 (600+1½)	562 (600-2)
	CORPUS CHRISTI (CRP) INTL ALTIMETER SETTING			
S-ILS 13R	246-¾ 233 (300-¾)			

LNAV MDA*	500-¾ 487 (500-¾)	500-1½ 487 (500-1½)
-----------	-------------------	---------------------

CIRCLING	500-1 482 (500-1)	540-1½ 620-2 (600-1½)	602 (700-2)
----------	-------------------	-----------------------	-------------



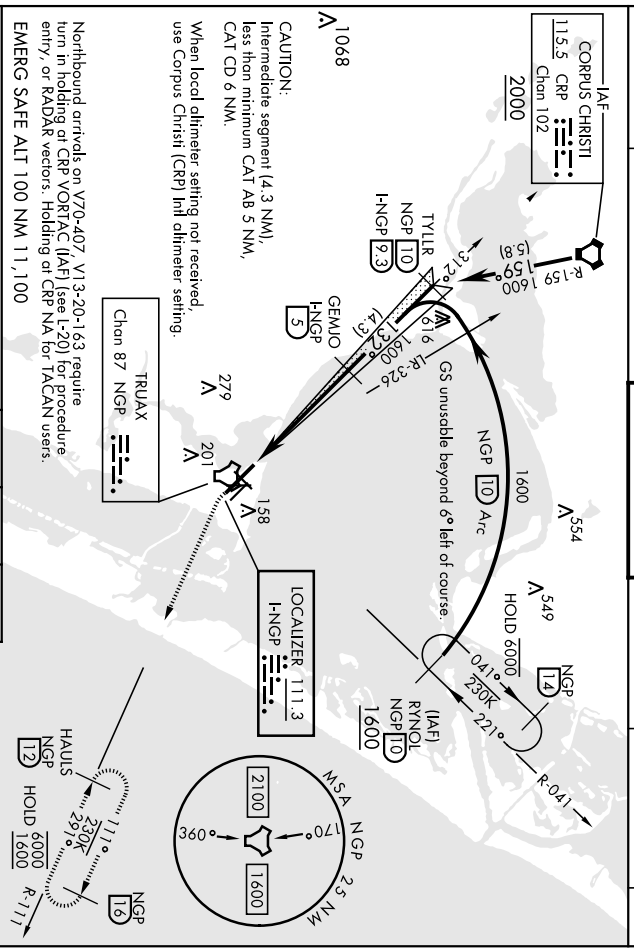
HRLR Rwy 4-22, 13R-311, 1  
HRLR Rwy 13L-31R, 18-36  
REL Rwy 4-22, 13L-31R, 18-36, 31L

CORPUS CHRISTI, TEXAS 27°42'N-97°17'W CORPUS CHRISTI NAS (TRUAX FLD) (KNGP)  
Orig 30NOV23 ILS Y or RNAV (GPS) RWY 13R

# ILS Z or LOC Z RWY 13R

LOC INGP <b>111.3</b>	APCH CRS <b>132°</b>	Rev./Idg TDZE Appr Elev	<b>8001</b> <b>13</b> <b>18</b>
DME required			
* When AIS Inop, increase CAT AB vis to 1 mile, CAT CD to 1 $\frac{3}{8}$ miles.			

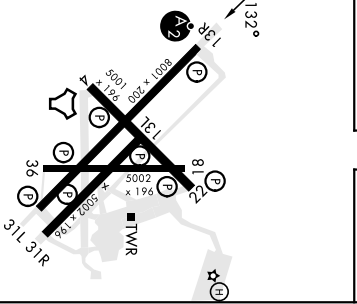
[USN]	CORPUS CHRISTI NAS (TRUAX FLD) (KNGP)				
SALSF MISSED APPROACH: Climb to 500 hdg 1 32°, then climbing left turn to 1600 and intercept INGP TACAN R-111 to HAUIS and hold.					
AIS1 *	APP CON	NAVY CORPUS TOWER * <b>134.850</b>	GND CON <b>118.7 257.85</b>	CINC DEL <b>314.3</b>	ASR/ PAR
<b>127.9 290.9</b>	<b>128.675 343.75</b>	<b>340.2</b>	<b>314.3</b>		



Northbound arrivals on V70-407, V13-20-163 require turn in holding of CRP VORTAC (IAF) (see L-20) for procedure entry, or RADAR vectors. Holding at CRP NA for TACAN users.  
EMERG SAFE ALT 100 NM 11,100

ELEV	18	TDZE	13
------	----	------	----

GS 3.00° TCH 47'				
CATEGORY	A	B	C	D
S-ILS 13R	21.3- $\frac{3}{4}$	200	[200- $\frac{3}{4}$ ]	
S-LOC 13R *	460- $\frac{3}{4}$	447 (500- $\frac{3}{4}$ )	460-1	447 (500-1)
☑ CIRCLING	460-1	480-1	520-1 $\frac{1}{2}$	580-2
	442 (500-1)	462 (500-1)	502 (600-1 $\frac{1}{2}$ )	562 (600-2)
CORPUS CHRISTI (CRP) INTL ALTITUDE SETTINGS				
S-ILS 13R	246- $\frac{3}{4}$	233	[300- $\frac{3}{4}$ ]	
S-LOC 13R *	500- $\frac{3}{4}$	487 (500- $\frac{3}{4}$ )	500-1 $\frac{1}{2}$	487 (500-1 $\frac{1}{2}$ )
☑ CIRCLING	500-1	482 (500-1)	540-1 $\frac{1}{2}$	620-2
			522 (600-1 $\frac{1}{2}$ )	602 (700-2)



HRL Rwy 4-22, 13R-31L	
HRL Rwy 13L-31R, 18-36	
REFL Rwy 4-22, 13L-31R, 18-36, 31L	
FAE to MAP 4.4 NM	
Knots	60 90 120 150 180
Mins:Sec	4:24 2:56 2:12 1:46 1:28

CORPUS CHRISTI, TEXAS  
 Orig ZSIANZ24  
 27°42'N-97°17'W  
 CORPUS CHRISTI NAS (TRUAX FLD) (KNGP)  
**ILS Z or LOC Z RWY 13R**

# RNAV (GPS) RWY 13L

[USN]

CORPUS CHRISTI NAS (TRUAX FLD) (KNGP)

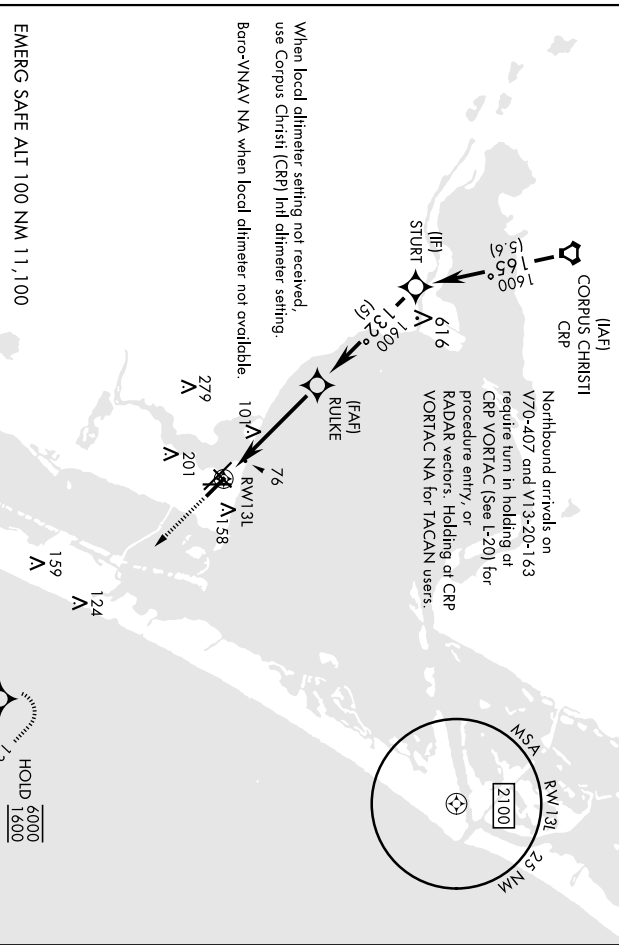
ARCH CRS	Rwy Idg	5002
132°	TDZE	18
	Aprt Elev	18

RNP ARCH

▼ For uncompensated Baro-VNAV systems, LNAV/VNAV NA below -1.5° C (3°F) or above 54° C (129° F).

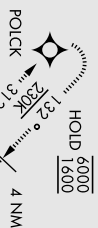
MISSED APPROACH: Climb to 600, then climbing right turn to 1600 direct POLCK and hold.

ATIS ★	APP CON	NAVY CORPUS TOWER ★	GND CON	CINC DEL	ASR/PAR
127.9 290.9	128.675 343.75	134.85 340.2	118.7 257.85	314.3	

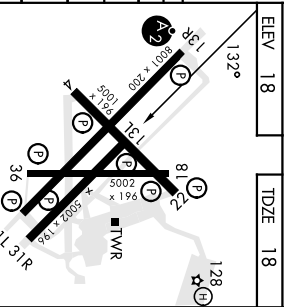


EMERG SAFE ALT 100 NM 11,100

600	1600	POLCK
-----	------	-------



GP 3.00° TCH 46	A			B			C			D		
INAV/VNAV DA	268-1			250			(300-1)					
INAV MDA	400-1	382	(400-1)	400-1½	382	(400-1½)	520-1½	580-2	520-1½	562	(600-2)	
◻ CIRCLING	442	(500-1)	462	(500-1)	502	(600-1½)	562	(600-2)				
CORPUS CHRISTI CRP INTL ALTIMETER SETTING												
INAV MDA	420-1	402	(500-1)	420-1½	402	(500-1½)						
◻ CIRCLING	500-1	482	(500-1)	540-1½	522	(600-1½)	602	(700-2)				



HRL Rwy 4-22, 13R-31L  
 HRL Rwy 13L-31R, 18-36  
 RLL Rwy 4-22, 13L-31R, 18-36, 31L

CORPUS CHRISTI, TEXAS

27°42'N-97°17'W

CORPUS CHRISTI NAS (TRUAX FLD) (KNGP)

Amdt 2 30NOV23

RNAV (GPS) RWY 13L

# RNAV (GPS) RWY 18

ARCH CRS  
177°  
Rwy Ldg  
TDZE  
18  
Appr Elev  
18

[USN]

CORPUS CHRISTI NAS (TRUAX FLD) (KNGP)

RNP APCH  
 ▲ For uncompensated Baro-VNAV systems, INAV/VNAV NA below -1.5° C (5° F) or above 54° C (129° F).

MISSED APPROACH: Climb to 2000 direct  
 TYSON and hold.

ATIS ★  
127.9 290.9

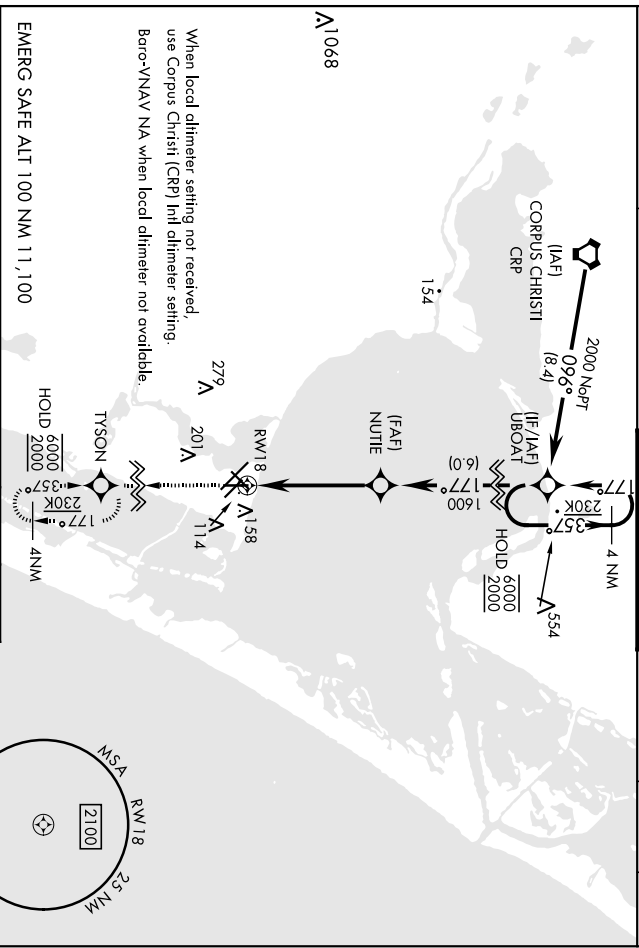
APP CON  
128.675 343.75

NAVY CORPUS TOWER ★  
134.850 340.2

GND CON  
118.7 257.85

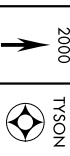
CLNC DEL  
314.3

ASR/  
PAR

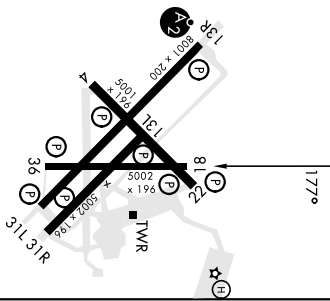
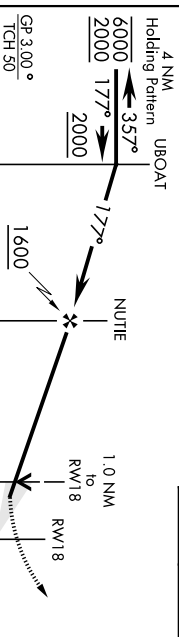


EMERG SAFE ALT 100 NM 11,100

VDE NA when using Corpus Christi (CRP) Intl altimeter setting.



ELEV 18 TDZE 18



CATEGORY	A	B	C	D
INAV/VNAV DA	268 -¾	250	(300-¾)	275-¾ 257 (300-¾)
INAV MDA	380 -1		362	(400 -1)
CIRCLING	460 -1	480 -1	520 -1½	580 -2
	442 (500 -1)	462 (500 -1)	502 (600 -1½)	562 (600 -2)
CORPUS CHRISTI (CRP) INTL ALTIMETER SETTING				
INAV MDA	400 -1	382 (400 -1)	400 -1½	382 (400 -1½)
CIRCLING	500 -1	482 (500 -1)	540 -1½	620 -2
			522 (600 -1½)	602 (700 -2)

HIRL Rwy 4-22, 13R-31L  
 HIRL Rwy 13L-31R, 18-36  
 REIL Rwy 4-22, 13L-31R, 18-36, 31L

# RNAV (GPS) RWY 18

# RNAV (GPS) RWY 22

ARCH CRS <b>222°</b>	Rwy. Ldg TDZE APR Elev	<b>5001</b> <b>15</b> <b>18</b>
-------------------------	------------------------------	---------------------------------------

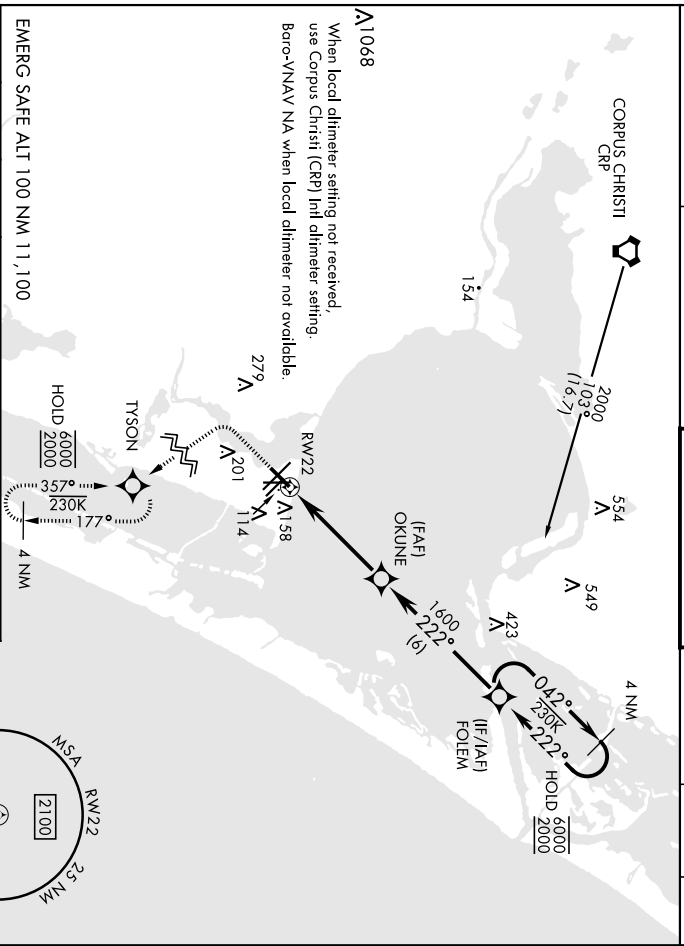
[USN]

CORPUS CHRISTI NAS (TRUAX FLD) (KNGP)

**▲** For uncompensated Baro-VNAV systems, LNAV/VNAV NA below -1.5° C [5° F] or above 34° C [129° F].

**MISSED APPROACH:** Climb to 600, then climbing left turn to 2000 directed TYSON and hold.

RNP APCH	ATIS ★ <b>127.9 290.9</b>	APP CON <b>128.675 343.75</b>	NAVY CORPUS TOWER ★ <b>134.85 340.2</b>	GND CON <b>118.7 257.85</b>	CLNC DEL <b>314.3</b>	ASR/ PAR
----------	------------------------------	----------------------------------	--	--------------------------------	--------------------------	-------------

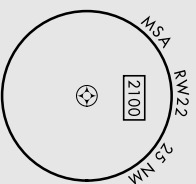


**A1068**

When local altimeter setting not received, use Corpus Christi (CRP) Intl altimeter setting.  
Baro-VNAV NA when local altimeter not available.

EMERG SAFE ALT 100 NM 11,100

600	2000	TYSON	VDP NA when using Corpus Christi (CRP) Intl altimeter setting.
			4 NM Holding Pattern



1.0 NM to RWY22

OKUNE  $272^\circ$   $11.4$

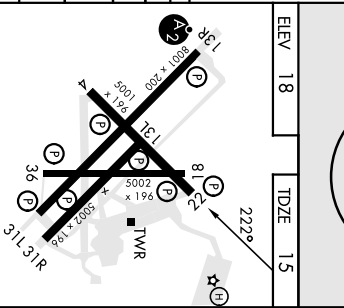
FOLEM  $042^\circ$   $222^\circ$   $2000$

GP 3000°  
TCH 52

CATEGORY	A	B	C	D
LNAV MDA	380-1	365	400-1	
LNAV/VNAV DA	320-7/8 305 (400-7/8)		380-1	
CIRCLING	460-1	480-1	520-1 1/2	580-2
	422 (500-1)	462 (500-1)	502 (600-1 1/2)	562 (600-2)

CORPUS CHRISTI (CRP) INTL ALTIMETER SETTING

LNAV MDA	400-1	385 (400-1)	400-1 1/2	385 (400-1 1/2)
CIRCLING	500-1	482 (500-1)	540-1 1/2	620-2
			522 (600-1 1/2)	602 (700-2)



CORPUS CHRISTI, TEXAS  
Amdt 2 30NOV23

27°42'N-97°17'W

CORPUS CHRISTI NAS (TRUAX FLD) (KNGP)

# RNAV (GPS) RWY 22

# RNAV (GPS) RWY 31L

[USN]

CORPUS CHRISTI NAS (TRUAXX FID) (KNGP)

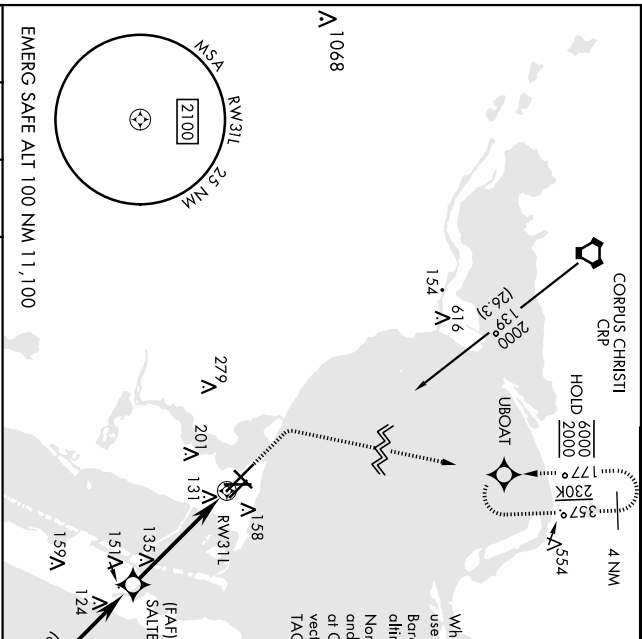
ARCH CRS	Rwy Idg	<b>8001</b>
<b>312°</b>	TDZE	<b>17</b>
	Appt Elev	<b>18</b>

RNP APCH

▼ For uncompensated Baro-VNAV systems, LNAV/VNAV NA below -1.5° C (5° F) or above 34° C (129° F).

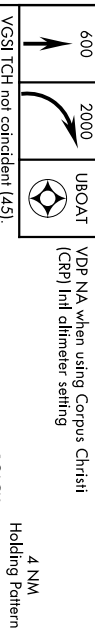
MISSED APPROACH: Climb to 600, then climbing right turn to 2000 direct UBOAT and hold.

ATIS *	APP CON	NAVY CORPUS TOWER *	GND CON	CLNC DEL	ASR/ PAR
<b>127.9 290.9</b>	<b>128.675 343.75</b>	<b>134.85 340.2</b>	<b>118.7 257.85</b>	<b>314.3</b>	



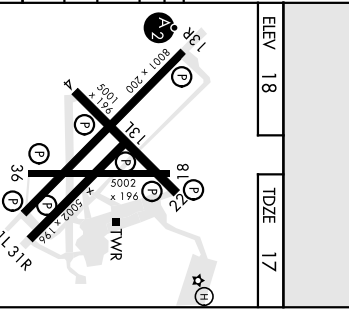
When local altimeter setting not received, use Corpus Christi (CRP) Intl altimeter setting. Baro-VNAV NA when local altimeter not available.

Northbound arrivals on V70-407 and V13-20-1-63 require turn in holding at CRP VORTAC (See L-201) or RADAR vectors. Holding at CRP NA for TACAN users.



ELEV	18	TDZE	17
------	----	------	----

CATEGORY	A	B	C	D
LNAV/VNAV DA	412-1½	395	(400-1½)	
LNAV MDA	420-1	403 (500-1)	420-1½	403 (500-1½)
CIRCLING	460-1	480-1	520-1½	580-2
	442 (500-1)	462 (500-1)	502 (600-1½)	562 (600-2)
CORPUS CHRISTI (CRP) INTL ALTIMETER SETTING				
LNAV MDA	460-1	443 (500-1)	460-1½	443 (500-1½)
CIRCLING	500-1	482 (500-1)	540-1½	620-2
			522 (600-1½)	602 (700-2)



HIRL Rwy 4-22, 13R-31L	
HIRL Rwy 13L-31R, 18-36	
REIL Rwy 4-22, 13L-31R, 18-36, 31L	



# RNAV (GPS) RWY 31R

[USN]

CORPUS CHRISTI NAS (TRUAX FLD) (KNGP)

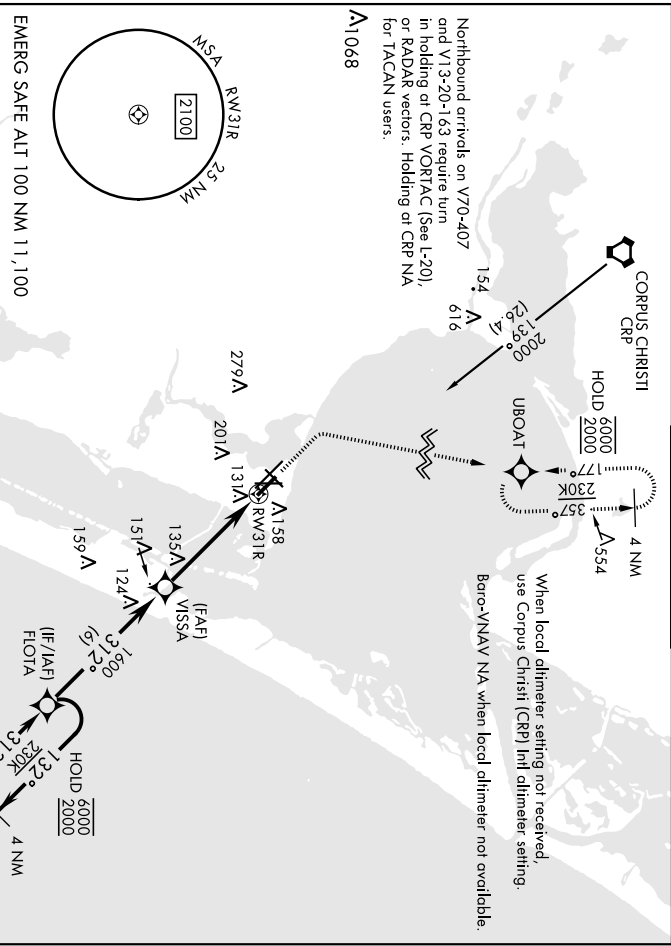
ARCH CRS	Rwy Idg	<b>5002</b>
<b>312°</b>	TDZE	<b>18</b>
	Appt Elev	<b>18</b>

RNP APCH

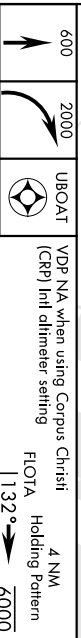
▼ For uncompensated Baro-VNAV systems, LNAV/VNAV NA below -1.5° C [5° F] or above 54° C [129° F].

MISSED APPROACH: Climb to 600, then climbing right turn to 2000 direct UBOAT and hold.

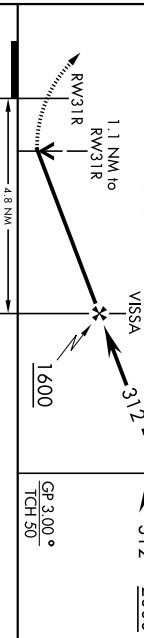
ATIS *	APP CON	NAVY CORPUS TOWER *	GND CON	CLNC DEL	ASR/ PAR
<b>127.9 290.9</b>	<b>128.675 343.75</b>	<b>134.85 340.2</b>	<b>118.7 257.85</b>	<b>314.3</b>	



EMERG SAFE ALT 100 NM 11,100

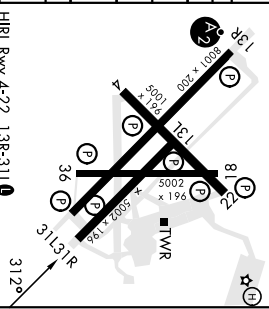


VGSI TCH not coincident (451).



CATEGORY	A	B	C	D
LNAV/VNAV DA	411-1½	393	(400-1½)	
LNAV MDA	420-1	402 (500-1)	420-1½	402 (500-1½)
<b>CIRCLING</b>	460-1	480-1	520-1½	580-2
	442 (500-1)	462 (500-1)	502 (600-1½)	562 (600-2)
CORPUS CHRISTI CRP INTL ALTIMETER SETTING				
LNAV MDA	460-1	442 (500-1)	460-1½	442 (500-1½)
<b>CIRCLING</b>	500-1	482 (500-1)	540-1½	620-2
			522 (600-1½)	602 (700-2)

ELEV	18	TDZE	18
------	----	------	----



HIRL Rwy 4-22, 13R-31L  
 HIRL Rwy 13L-31R, 18-36  
 REIL Rwy 4-22, 13L-31R, 18-36, 31L

CORPUS CHRISTI, TEXAS CORPUS CHRISTI NAS (TRUAX FLD) (KNGP)  
 Amdt 2 25JAN24 27°42'N-97°17'W  
**RNAV (GPS) RWY 31R**

# RNAV (GPS) RWY 36

[USN]

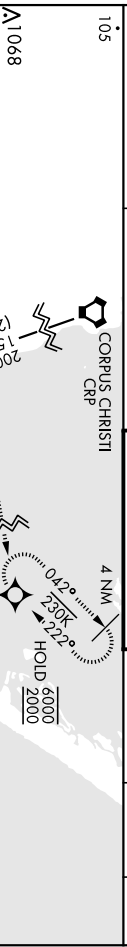
CORPUS CHRISTI NAS (TRUAX FLD) (KNGP)

ARCH CRS	Rwy Idg	<b>5002</b>
<b>357°</b>	TDZE	<b>18</b>
	Aprt Elev	<b>18</b>

RNP APCH  
 ▼ For uncompensated Baro-VNAV systems, LNAV/VNAV NA below -1.5° C (5° F) or above 34 C (129 F).

MISSSED APPROACH: Climb to 600, then climbing right turn to 2000 direct FOLEM and hold.

ATIS ★	APP CON	NAVY CORPUS TOWER ★	GND CON	CLNC DEL	ASR/ PAR
<b>127.9 290.9</b>	<b>128.675 343.75</b>	<b>134.85 340.2</b>	<b>118.7 257.85</b>	<b>314.3</b>	

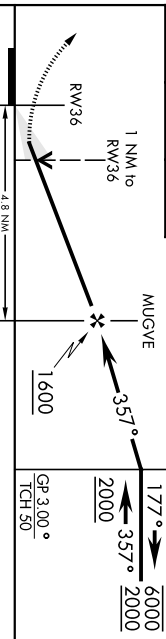
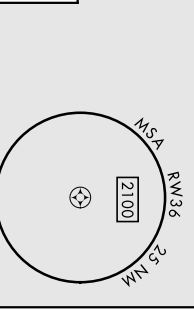
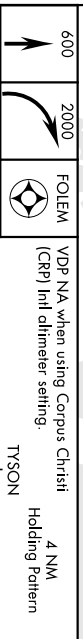


Baro-VNAV NA when local dihmeter not available.

Northbound arrivals on V70-407 and V13-20-1.63 require turn in holding at CRP VORTAC (See L-20) or RADAR vectors. Holding at CRP NA for TACAN users.

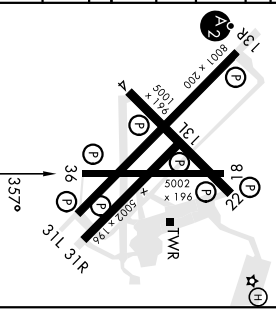
When local dihmeter setting not received, use Corpus Christi (CRP) Intl dihmeter setting.

EMERG SAFE ALT 100 NM 11,100



ELEV	18	TDZE	18
HIRL Rwy 4-22, 13R-31L			
HIRL Rwy 13L-31R, 18-36			
REL Rwy 4-22, 13L-31R, 18-36, 31L			

CATEGORY	A	B	C	D
LNAV MDA	400-1	382 (400-1)	400-1½	382 (400-1½)
LNAV/VNAV DA	400-1½ 382 (400-1½)			
CIRCLING	460-1	480-1	520-1½	580-2
	442 (500-1)	462 (500-1)	502 (600-1½)	562 (600-2)
CORPUS CHRISTI CRP INTL ALTIMETER SETTINGS				
LNAV MDA	440-1	422 (500-1)	440-1¼	422 (500-1¼)
CIRCLING	500-1	482 (500-1)	540-1½	620-2
			522 (600-1½)	602 (700-2)



CORPUS CHRISTI, TEXAS 27°42'N-97°17'W CORPUS CHRISTI NAS (TRUAX FLD) (KNGP)  
 Amdt 2 30NOV23

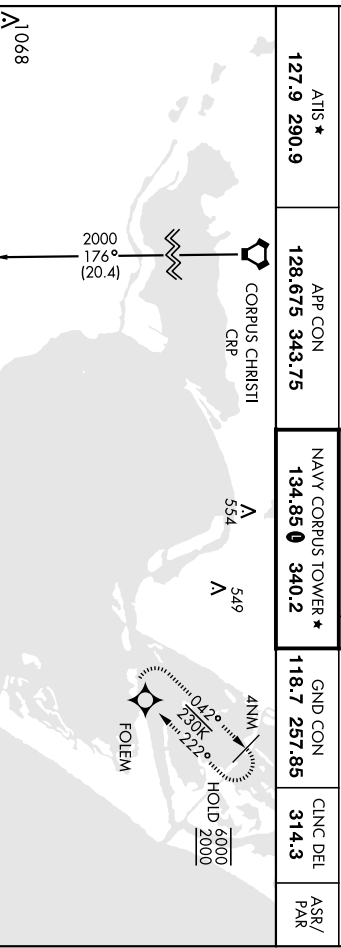
# RNAV (GPS) RWY 36

ARCH CRS	Rwy Idg	<b>5001</b>
<b>042°</b>	TDZE	<b>17</b>
	APR Elev	<b>18</b>

[USN]

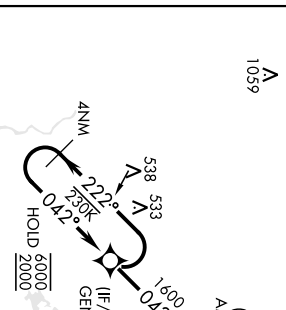
**RNAV (GPS) RWY 4**  
CORPUS CHRISTI NAS (TRUAX FLD) (KNGP)

RNP APCH	MISSED APPROACH: Climb to 2000 direct FOLEM and hold.	
ATIS *	APP CON	NAVY CORPUS TOWER *
<b>127.9 290.9</b>	<b>128.675 343.75</b>	<b>134.85 340.2</b>
	GND CON	CINC DEL
		<b>314.3</b>
	ASR/ PAR	



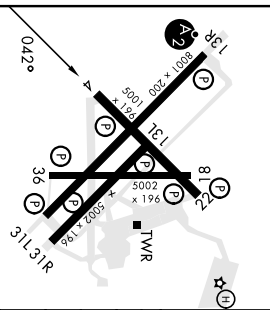
When local dlimeter setting not received, use Corpus Christi (CRP) Intl dlimeter setting.

Northbound arrivals on V70-407 and V13-20-163 require turn in holding or CRP VOR/DAC (See I-20) or RADAR vectors. Holding at CRP N/A for IACAN users.



Barco-VNAV NA when local dlimeter not available.

EMERG SAFE ALT 100 NM 11,100	ELEV 18	TDZE 17
4 NM Holding Pattern GENNY	VDP NA when using Corpus Christi (CRP) Intl dlimeter setting.	2000 FOLEM
2000	222°	042°
GP 3.00°	TCH 50	1600
		4.8 NM
		1 NM to RWY04



CATEGORY	A	B	C	D
INAV/VNAV DA	267-¾ 250 (300-¾)			
INAV MDA	400-1 383 (400-1)	400-1½ 383 (400-1½)	520-1½ 580-2	520-1½ 582 (600-2)
INAV MDA	460-1 480-1	442 (500-1) 462 (500-1) 502 (600-1½) 562 (600-2)	CORPUS CHRISTI (CRP) Intl ALTIMETER SETTINGS	
	420-1 403 (500-1)	420-1½ 403 (500-1½)	540-1½ 620-2	522 (600-1½) 602 (700-2)
			CORPUS CHRISTI NAS (TRUAX FLD) (KNGP)	

HRL Rwy 4-22, 13R-31L  
HRL Rwy 13L-31R, 18-36  
REIL Rwy 4-22, 13L-31R, 18-36, 31L

CORPUS CHRISTI, TEXAS  
Amdt 2 30NOV23

27°42'N-97°17'W

**RNAV (GPS) RWY 4**

# TACAN RWY 18

TACAN NGP Chon <b>87</b>	APCH CRS <b>192°</b>	Rwy/Idg TDZE Appr Elev <b>18</b> <b>18</b>	<b>5002</b>
-----------------------------	-------------------------	--	-------------

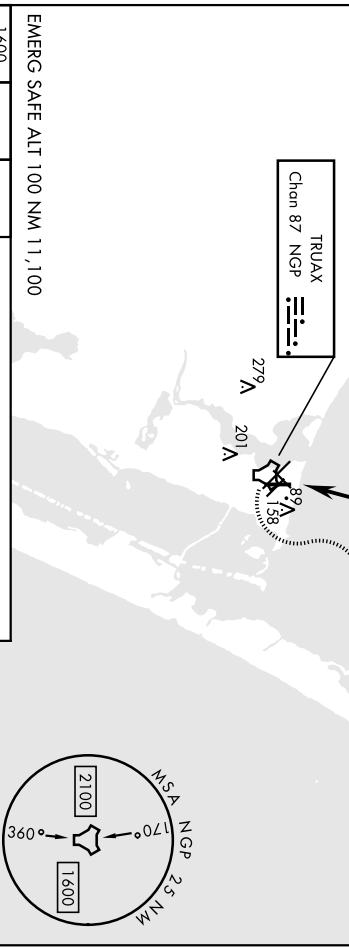
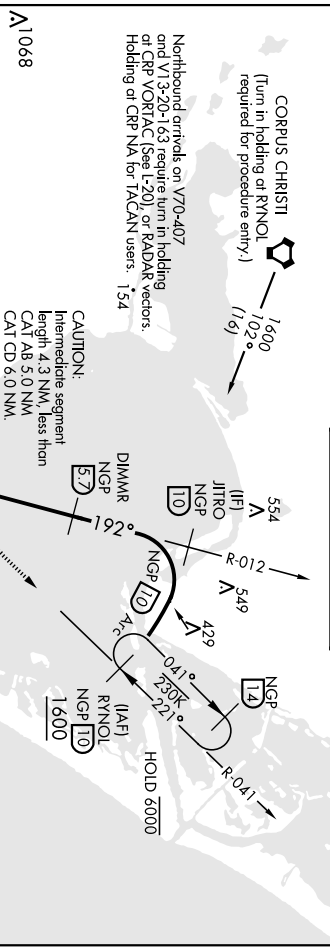
[UNSI]

CORPUS CHRISTI NAS (TRUAX FLD) (KNGP)

When local altimeter setting not received, use Corpus Christi (CRP) Intl altimeter setting.

MISSED APPROACH: Climb to 1600 direct NGP TACAN and turn left to intercept R-041 to RYNOL and hold.

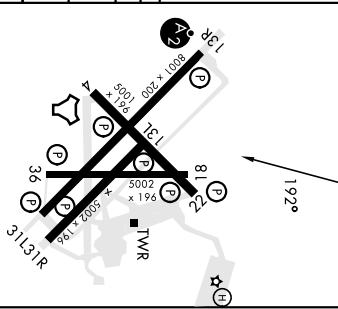
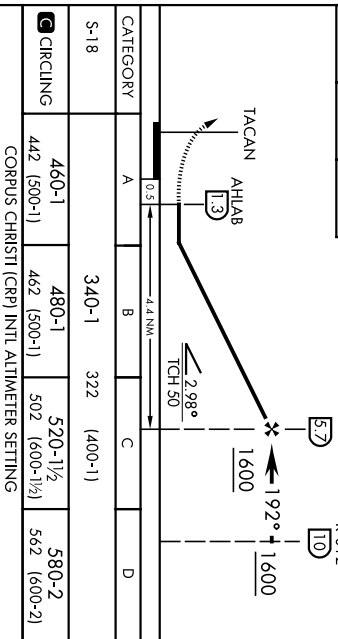
ATIS ★ <b>127.9 290.9</b>	APP CON <b>128.675 343.75</b>	NAVY CORPUS TOWER ★ <b>134.85 340.2</b>	GND CON <b>118.7 257.85</b>	CLNC DEL <b>314.3</b>	ASR/ PAR
------------------------------	----------------------------------	--	--------------------------------	--------------------------	-------------



EMERG SAFE ALT 100 NM 11,100

1600	NGP	NGP	DIMWR E7	JIRO R-012 10
→	↶	↷		

ELEV	18
TDZE	18



CATEGORY	A	B	C	D
S-18	340-1	322	(400-1)	
CIRCLING	460-1	480-1	520-1½	580-2
	442 (500-1)	462 (500-1)	502 (600-1½)	562 (600-2)
CORPUS CHRISTI (CRP) INTL ALTIMETER SETTINGS				
S-18	380-1	362	(400-1)	
CIRCLING	500-1	482	(500-1)	620-2
			522 (600-1½)	602 (700-2)

HIRL Rwy 4-22, 13R-31L, 10  
 HIRL Rwy 13L-31R, 18-36  
 REIL Rwy 4-22, 13L-31R, 18-36, 31L

CORPUS CHRISTI, TEXAS  
 Amdt 2 30NOV23  
 27°42'N-97°17'W  
 CORPUS CHRISTI NAS (TRUAX FLD) (KNGP)  
**TACAN RWY 18**

# TACAN RWY 36

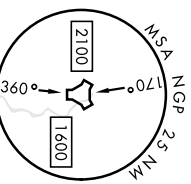
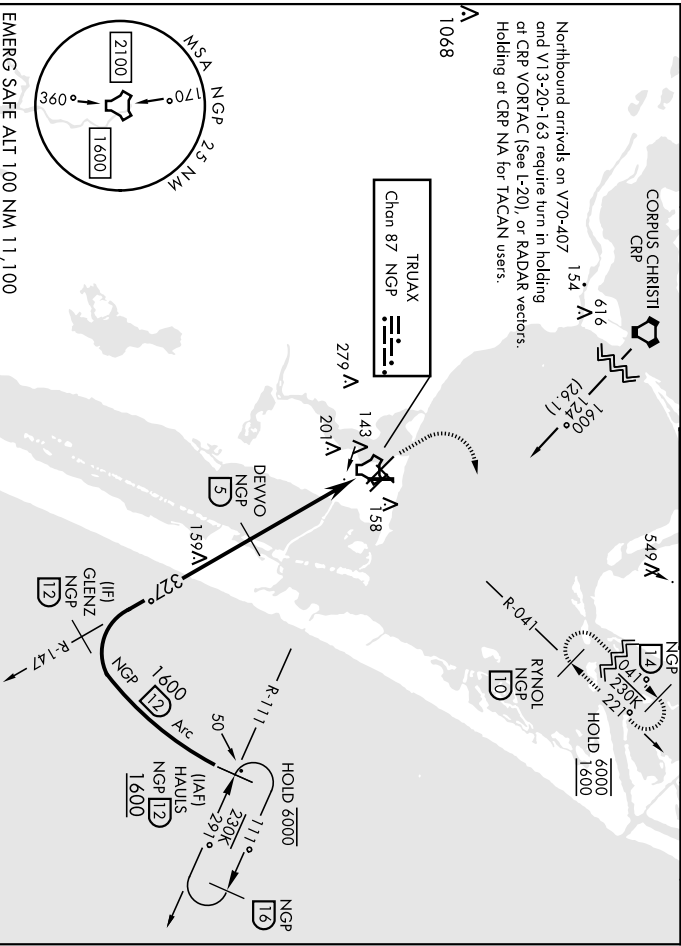
TACAN NGP Chon <b>87</b>	APCH CRS <b>327°</b>	Rwy/Idg TDZE Arpt Elev <b>18</b> <b>18</b>	APP CON <b>128.675 343.75</b>
-----------------------------	-------------------------	--	----------------------------------

[USN]	CORPUS CHRISTI NAS (TRUAX FLD) (KNGP)	GND CON <b>118.7 257.85</b>	CINC DEL <b>314.3</b>	ASR/ PAR
<p><b>MISSED APPROACH:</b> Climb to 1600 direct NGP TACAN and turn right to intercept R-041 to RNNOL and hold.</p>		NAVY CORPUS TOWER ★ <b>134.85 340.2</b>		

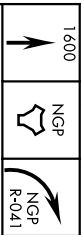
**ATIS ★**  
**127.9 290.9**

When local altimeter setting not received, use Corpus Christi (CRP) Intl altimeter setting.

Northbound arrivals on V70-407 and V13-20-63 require turn in holding at CRP VORTAC (See I-20), or RADAR vectors. Holding at CRP NA for TACAN users.



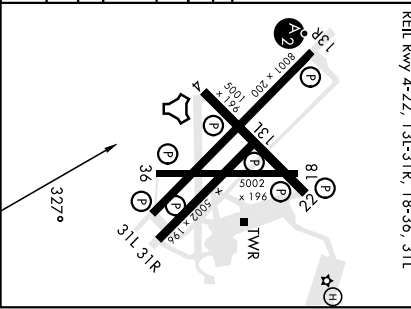
EMERG SAFE ALT 100 NM 11,100



VDP NA when using Corpus Christi (CRP) Intl altimeter setting.

ELEV	18	TDZE	18
HIRL Rwy 4-22, 13R-31L	18-36		
HIRL Rwy 13L-31R, 18-36	18-36		
REIL Rwy 4-22, 13L-31R, 18-36, 31L			

CATEGORY	A	B	C	D
S-36	400-1	382 (400-1)	400-1½	382 (400-1½)
☑ CIRCLING	460-1	480-1	520-1½	580-2
	442 (500-1)	462 (500-1)	502 (600-1½)	562 (600-2)
CORPUS CHRISTI (CRP) INTL ALTIMETER SETTINGS				
S-36	440-1	422 (500-1)	440-1½	422 (500-1½)
☑ CIRCLING	500-1	482 (500-1)	540-1½	620-2
			522 (600-1½)	602 (700-2)



CORPUS CHRISTI, TEXAS  
Amtd 2 30NOV23

27°42'N-97°17'W CORPUS CHRISTI NAS (TRUAX FLD) (KNGP)

# TACAN RWY 36

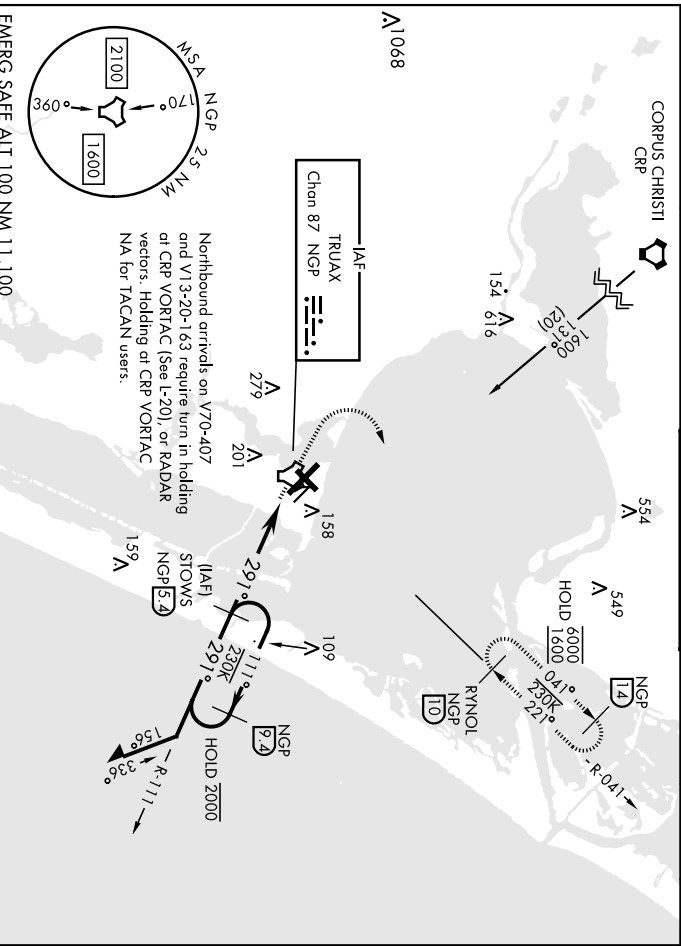
TACAN NGP Chan <b>87</b>	APCH CRS <b>291°</b>	Rwy/Ldg TDZE Appr Elev <b>17</b> <b>18</b>	<b>8001</b>
-----------------------------	-------------------------	--	-------------

[UN] CORPUS CHRISTI NAS (TRUAX FLD) (KNGP)

When local altimeter setting not received, use Corpus Christi (CRP) Intl altimeter setting.

MISSED APPROACH: Climb to 1600 direct NGP TACAN and turn right to intercept R-041 to RYNOL and hold.

ATIS * <b>127.9 290.9</b>	APP CON <b>128.675 343.75</b>	NAVY CORPUS TOWER * <b>134.850 340.2</b>	GND CON <b>118.7 257.85</b>	CINC DEL <b>314.3</b>	ASR/ PAR
------------------------------	----------------------------------	---	--------------------------------	--------------------------	-------------



CATEGORY	A		B		C		D	
	420-1	403 (500-1)	420-1½	403 (500-1½)	420-2	403 (500-2)	420-2½	403 (500-2½)
S-31L	460-1	480-1	520-1½	580-2	460-1⅔	443 (500-1⅔)	540-1½	620-2
QIRCLING	442 (500-1)	462 (500-1)	502 (600-1½)	562 (600-2)	460-1⅔	443 (500-1⅔)	522 (600-1½)	602 (700-2)
CORPUS CHRISTI (CRP) INTL ALTIMETER SETTING								
S-31L	460-1	443 (500-1)	460-1⅔	443 (500-1⅔)	460-1⅔	443 (500-1⅔)	540-1½	620-2
QIRCLING	500-1	482 (500-1)	522 (600-1½)	602 (700-2)	522 (600-1½)	482 (500-1)	522 (600-1½)	602 (700-2)
CORPUS CHRISTI, TEXAS 27°42'N-97°17'W CORPUS CHRISTI NAS (TRUAX FLD) (KNGP)								
Amnd 2 30NOV23								

TACAN X RWY 31L

CORPUS CHRISTI, TEXAS

**TACAN Z RWY 13R**

[UN]

CORPUS CHRISTI NAS (TRUAX FLD) (KNGP)

TACAN NGP Chon <b>87</b>	APCH CRS <b>147°</b>	Rev./Idg TDZE Elev <b>13</b> <b>18</b>
-----------------------------	-------------------------	--



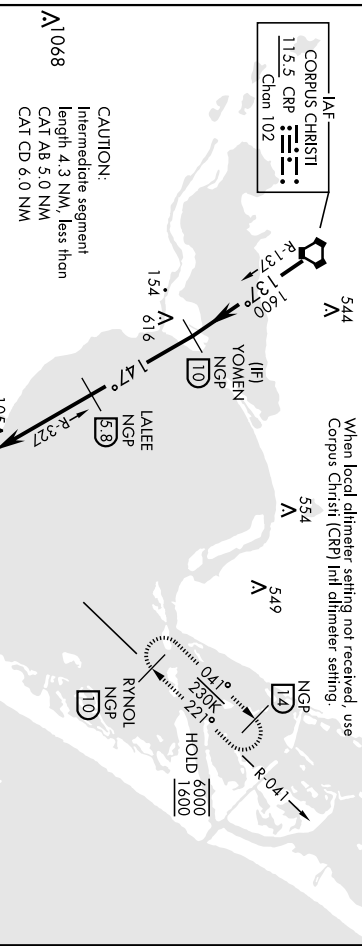
MISSED APPROACH: Climb to 1600 direct NGP TACAN and turn left to intercept R-041 to RYNOL and hold.

ATIS * <b>127.9 290.9</b>	APP CON <b>128.675 343.75</b>
------------------------------	----------------------------------

NAVY CORPUS TOWER * <b>134.85 340.2</b>
--

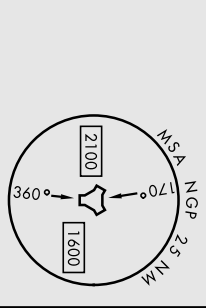
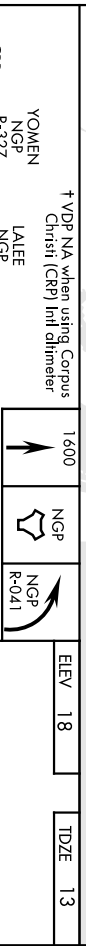
GND CON <b>118.7 257.85</b>	CINC DEL <b>314.3</b>	ASR/ PAR
--------------------------------	--------------------------	-------------

When local altimeter setting not received, use Corpus Christi (CRP) Intl altimeter setting.

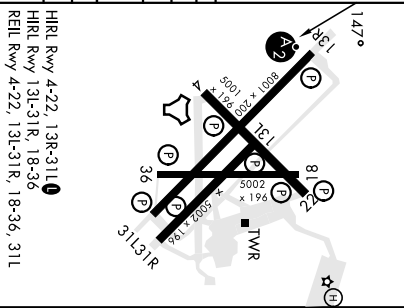


EMERG SAFE ALI 100 NM 11,100

SC-3, 22 FEB 2024 to 21 MAR 2024



CATEGORY	A	B	C	D
S-13R *	400-¾	387 (400-¾)	400-7/8	387 (400-7/8)
Ⓞ CIRCLING	460-1 (442 (500-1))	480-1 (462 (500-1))	520-1½ (502 (600-1½))	580-2 (562 (600-2))
CORPUS CHRISTI (CRP) INTL ALTIMETER SETTING				
S-13R *	420-¾	407 (500-¾)	420-1	407 (500-1)
Ⓞ CIRCLING	500-1	482 (500-1)	540-1½ (600-1½)	620-2 (700-2)



CORPUS CHRISTI, TEXAS  
Amdt Z 30NOV23

27°42'N-97°17'W CORPUS CHRISTI NAS (TRUAX FLD) (KNGP)  
**TACAN Z RWY 13R**

SC-3, 22 FEB 2024 to 21 MAR 2024

TACAN NGP	APCH CRS	Req./Idg	8001
Chon <b>87</b>	TDE	17	
	Appt Elev	18	

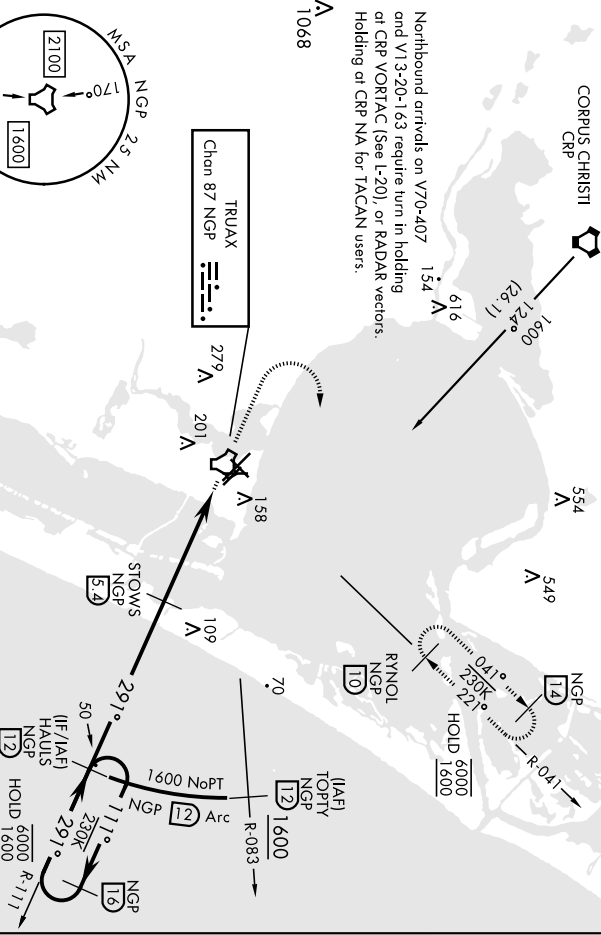
[UN] CORPUS CHRISTI NAS (TRUAX FLD) (KNGP)

When local altimeter setting not received, use Corpus Christi (CRP) Intl altimeter setting.

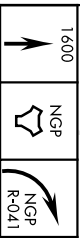
MISSED APPROACH: Climb to 1600 direct NGP TRUAX and turn right to intercept R-041 to RYNOL and hold.

ATIS ★	APP CON	NAVY CORPUS TOWER ★	GND CON	CINC DEL	ASR/ PAR
127.9 290.9	128.675 343.75	134.85 340.2	118.7 257.85	314.3	

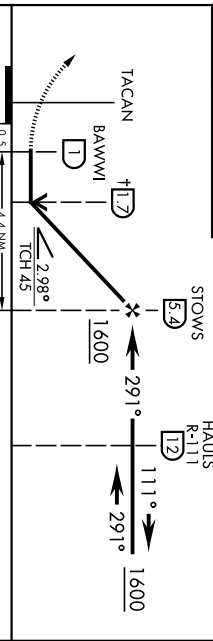
Northbound arrivals on V70-407 and V13-20-1-63 require turn in holding at CRP VORTAC (See L-20) or RADAR vectors. Holding at CRP NA for TACAN users.



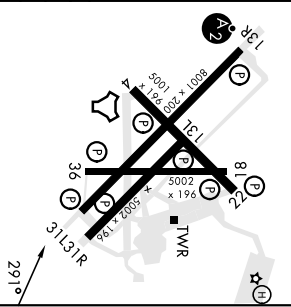
EMERG SAFE ALT 100 NM 11,100



▼ VDP N/A when using Corpus Christi (CRP) Intl altimeter setting



ELEV	18	TDE	17
------	----	-----	----



CATEGORY	A	B	C	D
S-31L	420-1	403 (500-1)	420-1½	403 (500-1½)
◻ CIRCLING	460-1	480-1	520-1½	580-2
	442 (500-1)	462 (500-1)	502 (600-1½)	562 (600-2)
CORPUS CHRISTI (CRP) INTL ALTIMETER SETTING				
S-31L	460-1	443 (500-1)	460-1⅔	443 (500-1⅔)
◻ CIRCLING	500-1	482 (500-1)	540-1½	620-2
			522 (600-1½)	602 (700-2)

CORPUS CHRISTI, TEXAS  
 Amdt 2 30NOV23  
 27°42'N-97°17'W CORPUS CHRISTI NAS (TRUAX FLD) (KNGP)  
**TACAN Z RWY 31L**



# VOR/DME or TACAN Y RWY 13R

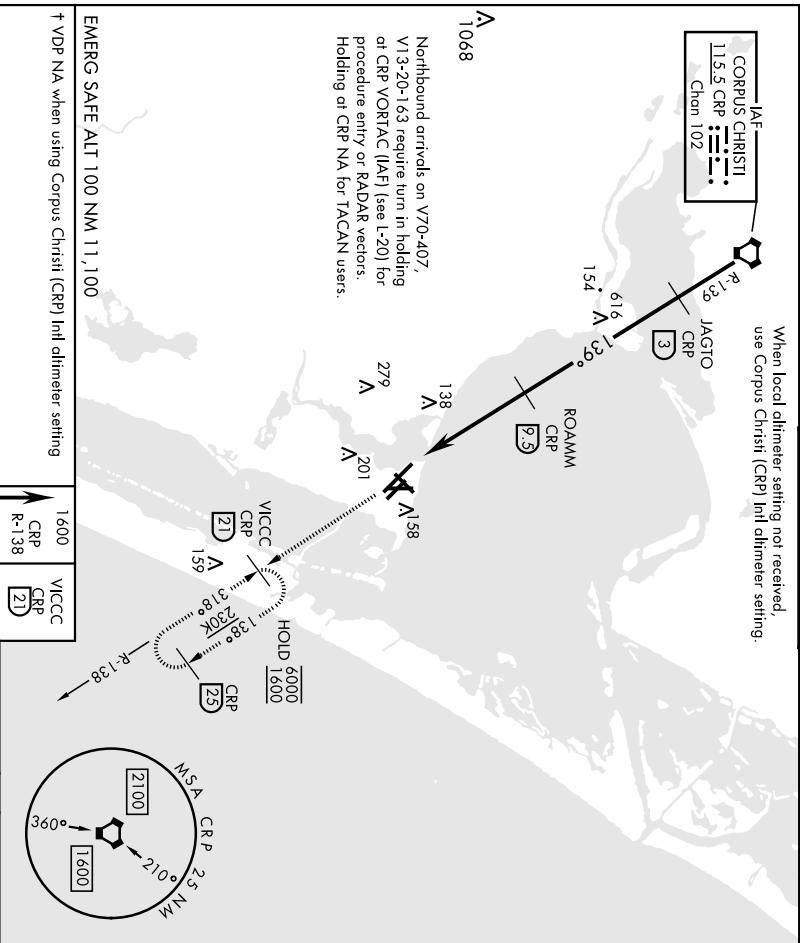
[UNSI]

CORPUS CHRISTI NAS (TRUAX FLD) (KNGP)

VORTAC CRP <b>115.5</b> Chan 102	APCH CRS <b>139°</b>	Rwy/Idg TDZE Appr Elev <b>13</b> <b>18</b>	<b>8001</b>	SATSF <b>A2</b>	MISSED APPROACH: Climb to 1600 on CRP VORTAC R-138 to VICCC and hold.
AITS * <b>127.9 290.9</b>		APP CON <b>128.675 343.75</b>	NAVY CORPUS TOWER * <b>134.850 340.2</b>	GND CON <b>118.7 257.85</b>	CLNC DEL <b>314.3</b>
		ASR/ PAR			

When local altimeter setting not received, use Corpus Christi (CRP) Intl altimeter setting.

\*\* When A15 inop, increase CAT AB vis to 1 mile, CAT CD vis to 1 1/2 miles.  
\*\* When A15 inop, increase CAT AB vis to 1 mile, CAT CD vis to 1 1/2 miles.



CATEGORY	A	B	C	D	ELEV 18	TDZE 13
S-13R *	420-3/4 407 (500-3/4)	420-1 407 (500-1)				
DIRCLING	442 (500-1) 462 (500-1)	520-1 1/2 502 (600-1 1/2)	562 (600-2)			
CORPUS CHRISTI (CRP) INTL ALTIMETER SETTING						
S-13R **	460-3/4 447 (500-3/4)	460-1 447 (500-1)				
DIRCLING	500-1 482 (500-1)	540-1 1/2 620-2 (600-1 1/2)	602 (700-2)			
CORPUS CHRISTI, TEXAS 27°42'N-97°17'W						
CORPUS CHRISTI NAS (TRUAX FLD) (KNGP)						

Amch 2 30NOV23 VOR/DME or TACAN Y RWY 13R

VORTAC CRP <b>115.5</b> Chan <b>102</b>	APCH CRS <b>318°</b>	Rwy/Idg TDZE Appt Elev	<b>8001</b> <b>17</b> <b>18</b>
---	-------------------------	------------------------------	---------------------------------------

[UN3]

CORPUS CHRISTI NAS (TRUAX FLD) (KNGP)

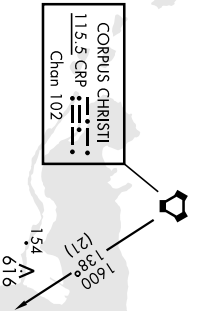
When local altimeter setting not received, use Corpus Christi (CRP) Intl altimeter setting.

MISSED APPROACH: Climb to 600 hdg 318°, then climbing right turn to 1600 to intercept CRP VORTAC R-138 to VICCC and hold.

ATIS ★ <b>127.9 290.9</b>	APP CON <b>128.675 343.75</b>
------------------------------	----------------------------------

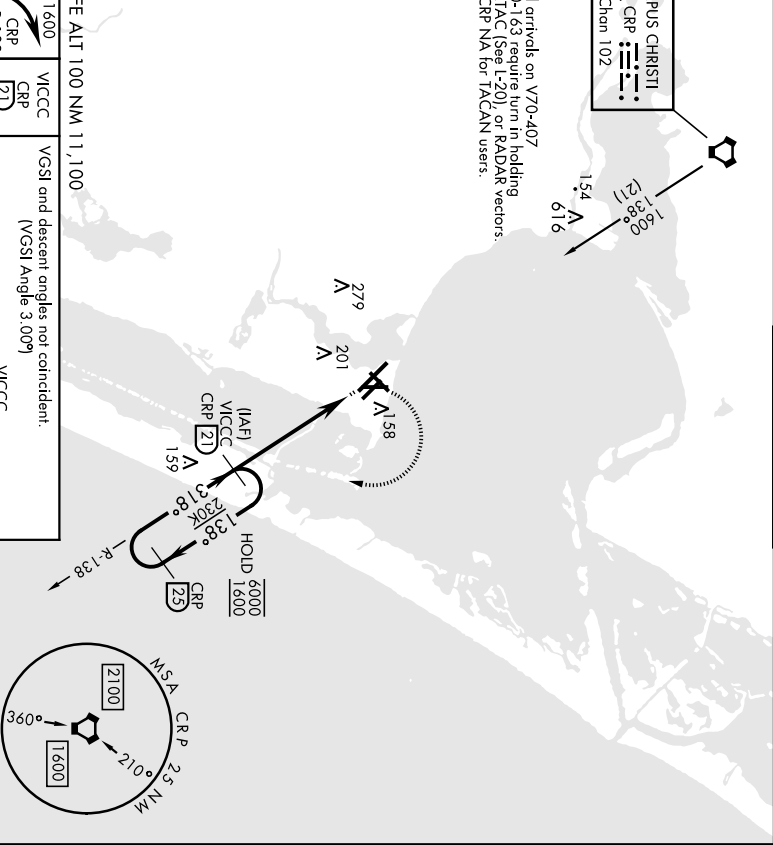
NAVY CORPUS TOWER ★ <b>134.85 340.2</b>
--

GND CON <b>118.7 257.85</b>	CLNC DEL <b>314.3</b>	ASR/ PAR
--------------------------------	--------------------------	-------------



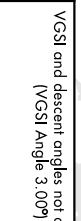
Northbound arrivals on V70-407 and V13-20-163 require turn in holding of CRP VORTAC (See L-20), or RADAR vectors. Holding at CRP NA for TACAN users.

1068



EMERG SAFE ALT 100 NM 11,100

600 hdg 318°	1600 CRP R-138	VICCC CRP [21]	VGS1 and descent angles not coincident. (VGS1 Angle 3.00°)
--------------	----------------	----------------	--



VICCC [21]	138°	1600
------------	------	------

\* VDP NA when using Corpus Christi (CRP) Intl altimeter setting.

CATEGORY	A				B				C				D			
	A				B				C				D			
S-31L	420-1	403	(500-1)		420-1½	403	(500-1½)									
QRCLING	460-1		480-1		520-1½		580-2									
QRCLING	442 (500-1)		462 (500-1)		502 (600-1½)		562 (600-2)									
CORPUS CHRISTI (CRP) INTL ALTIMETER SETTING																
S-31L	440-1	423	(500-1)		440-1½	423	(500-1½)									
QRCLING	500-1		482 (500-1)		540-1½		620-2									
CORPUS CHRISTI, TEXAS																

