

LOC I-MTW	APP CRS	Rwy ldg	5001
111.3	172°	TDZE	651
		Apt Elev	651

ILS or LOC RWY 17

MANITOWOC COUNTY (MTW)

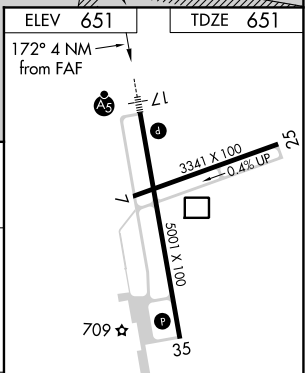
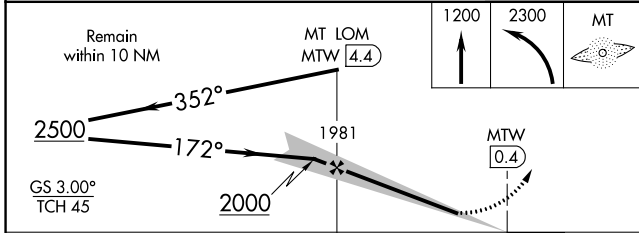
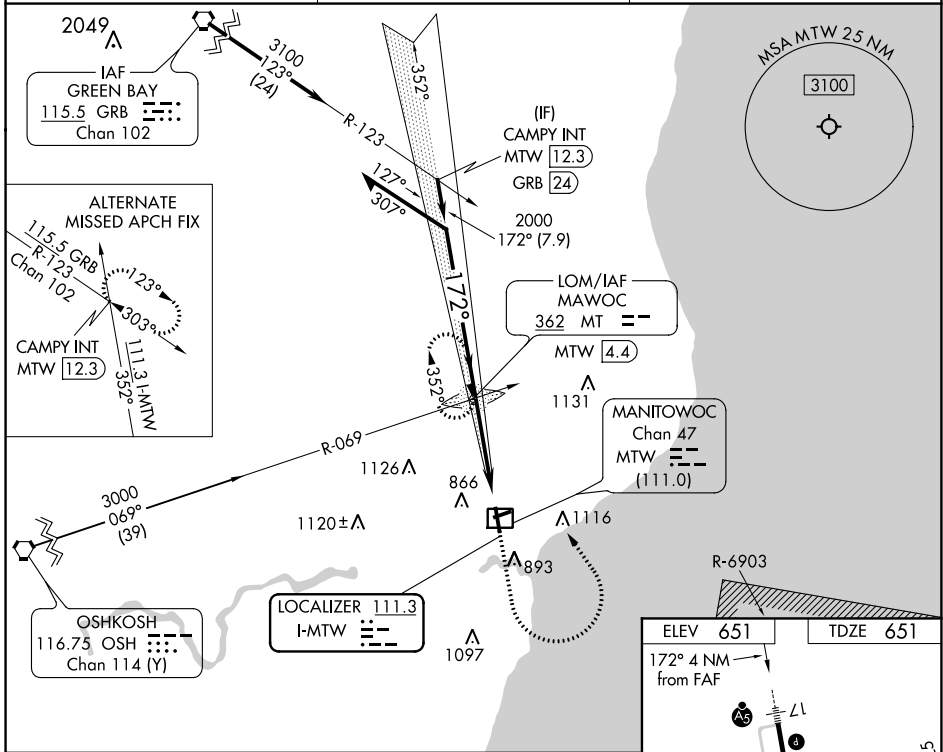
ADF required.

MALSR

MISSED APPROACH: Climb to 1200 then climbing left turn to 2300 direct MAWOC LOM and hold.

For inop ALS, increase S-LOC 17 Cat C/D visibility to 1 3/8 SM.

AWOS-3PT 123.775	GREEN BAY APP CON* 120.2 338.2	UNICOM 122.8 (CTAF)
----------------------------	--	-------------------------------



CATEGORY	A	B	C	D
S-ILS 17	851-1/2 200 (200-1/2)			
S-LOC 17	1160-1/2	509 (600-1/2)	1160-1	509 (600-1)
CIRCLING	1200-1	549 (600-1)	1420-2 1/4 769 (800-2 1/4)	1480-2 3/4 829 (900-2 3/4)

REIL Rwy 35

MIRL Rwy 7-25

HIRL Rwy 17-35

FAF to MAP 4 NM

Knots	60	90	120	150	180
Min:Sec	4:00	2:40	2:00	1:36	1:20

EC-3, 20 MAY 2021 to 17 JUN 2021

EC-3, 20 MAY 2021 to 17 JUN 2021

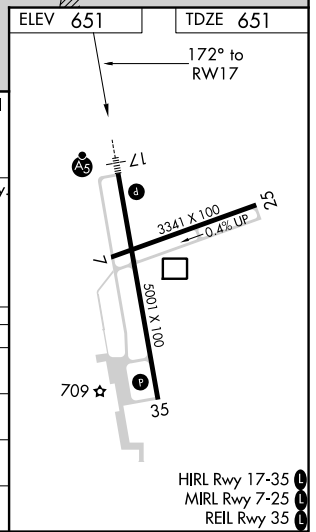
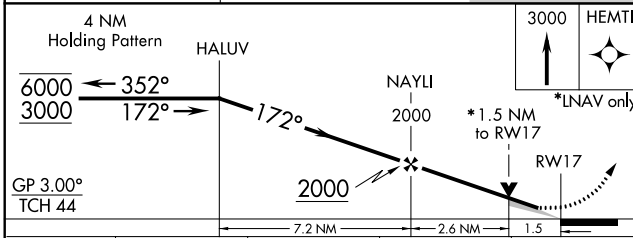
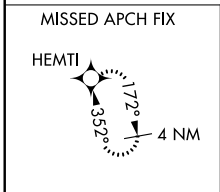
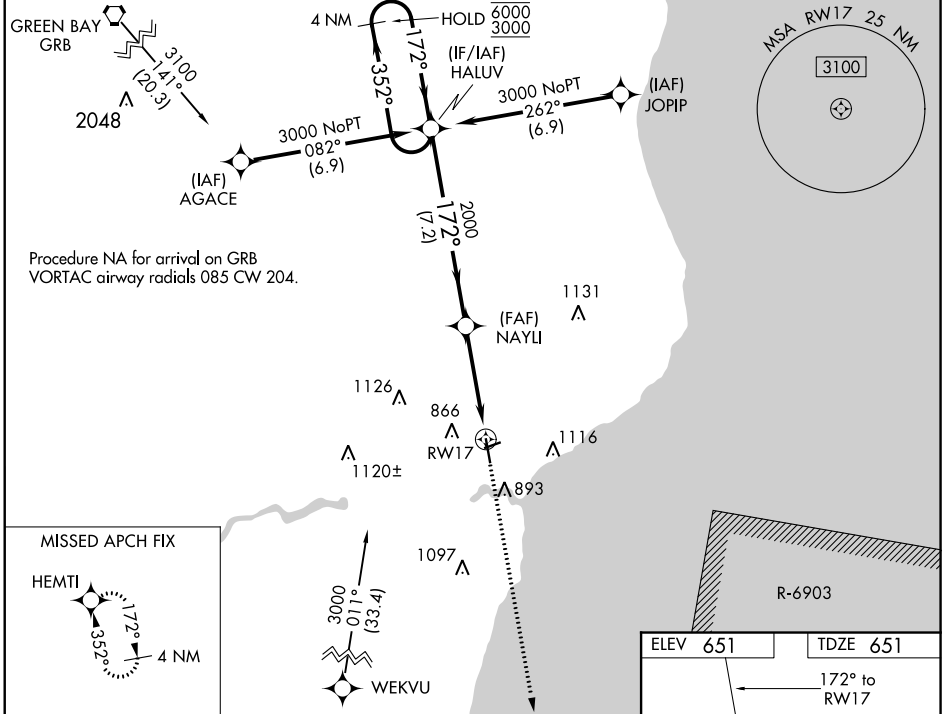
WAAS CH 63111 W17A	APP CRS 172°	Rwy Idg TDZE Apt Elev	5001 651 651
--	------------------------	-----------------------------	---

RNAV (GPS) RWY 17

MANITOWOC COUNTY (MTW)

RNP APCH.	<p>▼ For uncompensated Baro-VNAV systems, LNAV/VNAV NA below -16°C or above 54°C. For inop ALS, increase LNAV/VNAV all Cats visibility to 7/8 SM.</p>	<p>MALSR</p>	<p>MISSED APPROACH: Climb to 3000 direct HEMTI and hold.</p>
-----------	---	--------------	--

AWOS-3PT 123.775	GREEN BAY APP CON * 120.2 338.2	UNICOM 122.8 (CTAF)
----------------------------	---	-------------------------------



CATEGORY	A	B	C	D
LPV DA	851-1/2		200 (200-1/2)	
LNAV/VNAV DA	942-1/2		291 (300-1/2)	
LNAV MDA	1180-1/2	529 (600-1/2)	1180-1	529 (600-1)
C CIRCLING	1200-1	549 (600-1)	1420-2 1/4 769 (800-2 1/4)	1480-2 3/4 829 (900-2 3/4)

EC-3, 20 MAY 2021 to 17 JUN 2021

EC-3, 20 MAY 2021 to 17 JUN 2021

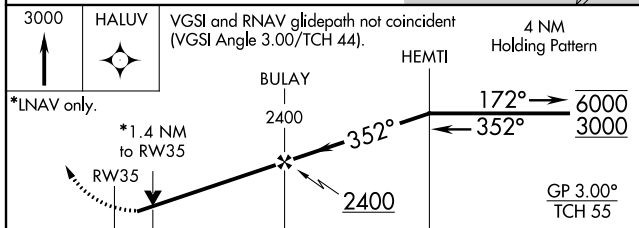
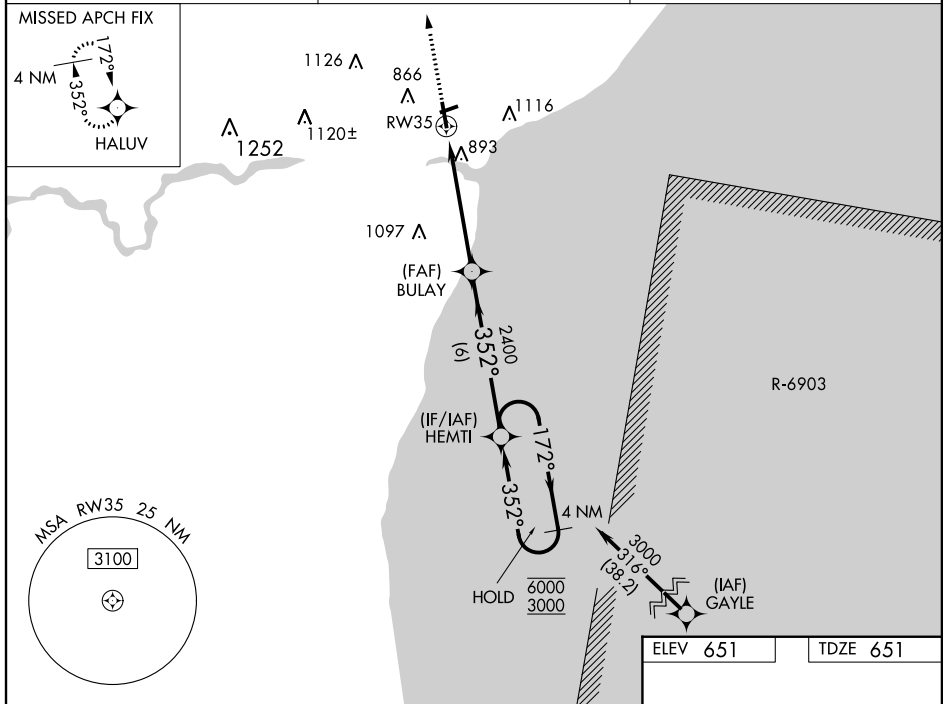
WAAS CH 82611 W35A	APP CRS 352°	Rwy Idg TDZE Apt Elev	5001 651 651
--	------------------------	-----------------------------	---

RNAV (GPS) RWY 35

MANITOWOC COUNTY (MTW)

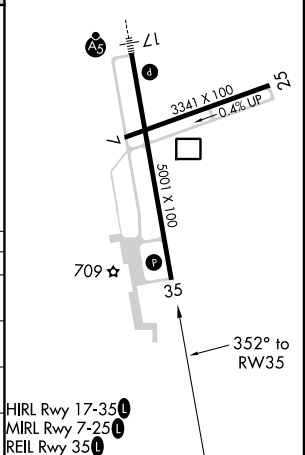
RNP APCH.	MISSED APPROACH: Climb to 3000 direct HALUV and hold.
-----------	---

AWOS-3PT 123.775	GREEN BAY APP CON★ 120.2 338.2	UNICOM 122.8 (CTAF)
----------------------------	--	-------------------------------



CATEGORY	A	B	C	D
LPV DA		957-7/8	306 (400-7%)	
RNAV/VNAV DA		1199-15/8	548 (600-1%)	
RNAV MDA	1160-1	509 (600-1)	1160-13/8	509 (600-13%)
C CIRCLING	1200-1	549 (600-1)	1420-2 1/4 769 (800-2 1/4)	1480-2 3/4 829 (900-2 3/4)

ELEV 651	TDZE 651
----------	----------



EC-3, 20 MAY 2021 to 17 JUN 2021

EC-3, 20 MAY 2021 to 17 JUN 2021