

LOC I-MQJ 108.7	APP CRS 252°	Rwy Idg TDZE Apt Elev	6005 860 862
---------------------------	------------------------	-----------------------------	---

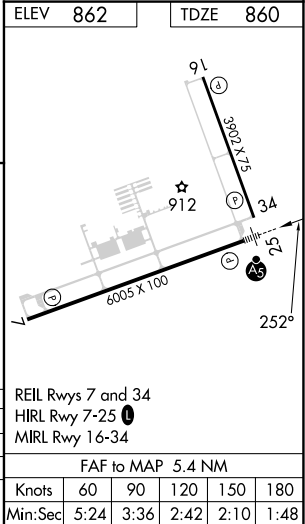
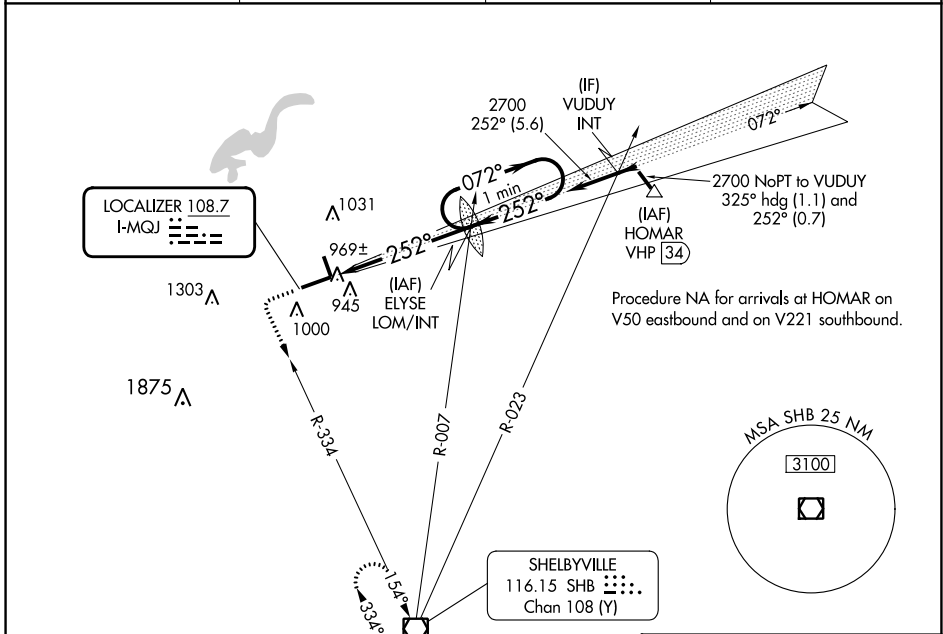
ILS or LOC RWY 25

INDIANAPOLIS RGNL (MQJ)

NA When local altimeter setting not received, use Indianapolis Intl altimeter setting and increase all DA 55 feet and all MDA 60 feet, increase S-LOC 25 Cats C/D visibility ½ mile and Circling Cat D visibility ¼ mile.

MALSRS
MISSED APPROACH: Climb to 1400 then climbing left turn to 2400 on SHB VOR/DME R-334 to SHB VOR/DME and hold.

AWOS-3PT 124.175	INDIANAPOLIS APP CON 127.15 317.8	CLNC DEL 119.25	UNICOM 122.975 (CTAF)
----------------------------	---	---------------------------	---------------------------------



ELEV 862	TDZE 860	
1400	2400	SHB
↑	SHB R-334	

CATEGORY	A	B	C	D
S-ILS 25	1060-½ 200 (200-½)			
S-LOC 25	1220-½	360 (400-½)	1220-⅝	360 (400-⅝)
CIRCLING	1340-1	478 (500-1)	1360-1½	1660-2½
			498 (500-1½)	798 (800-2½)

EC-2, 22 FEB 2024 to 21 MAR 2024

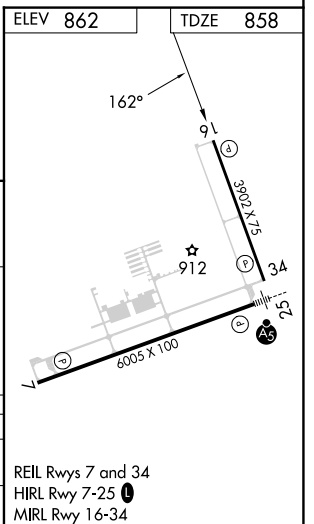
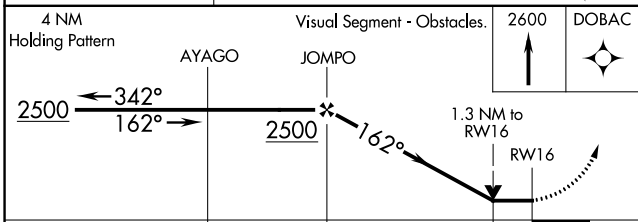
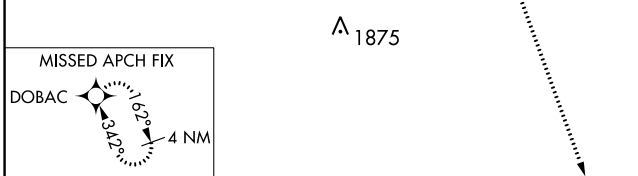
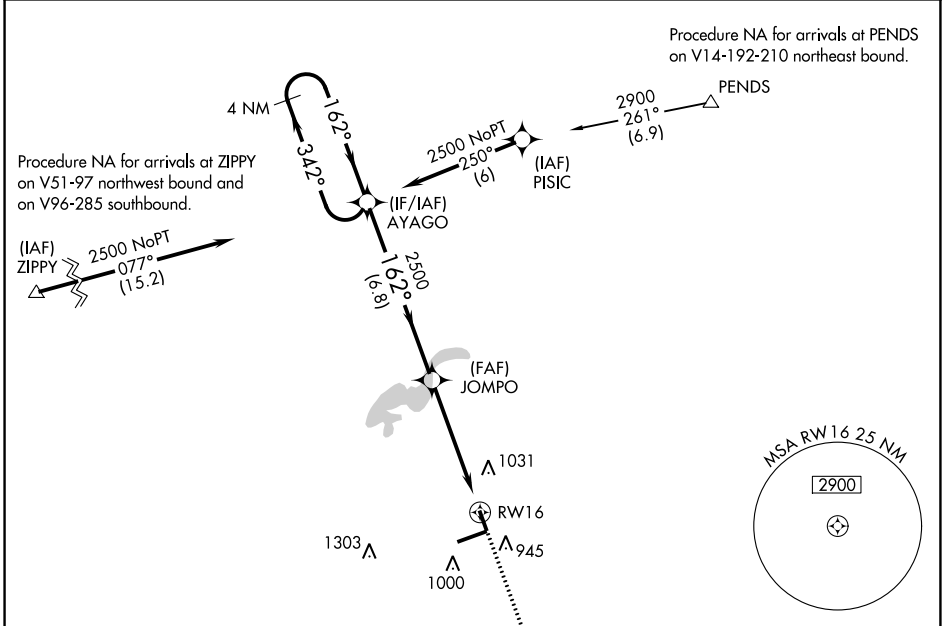
EC-2, 22 FEB 2024 to 21 MAR 2024

APP CRS	Rwy Idg	3902
162°	TDZE	858
	Apt Elev	862

RNAV (GPS) RWY 16

INDIANAPOLIS RGNL (MQJ)

RNP APCH.		MISSED APPROACH: Climb to 2600 direct DOBAC and hold.	
<p>▽ VDP NA with Indianapolis Intl altimeter setting. When local altimeter setting not received, use Indianapolis Intl altimeter setting and increase all MDA 60 feet, increase LNAV Cat C/D visibility 1/8 mile increase Circling Cat D visibility 1/4 mile. Rwy 16 helicopter visibility reduction below 3/4 SM NA.</p>			
AWOS-3PT	INDIANAPOLIS APP CON	CLNC DEL	UNICOM
124.175	127.15 317.8	119.25	122.975 (CTAF) 0



CATEGORY	A	B	C	D
LNAV MDA	1320-1	462 (500-1)	1320-1 3/8	462 (500-1 3/8)
C CIRCLING	1340-1	478 (500-1)	1360-1 1/2	1660-2 1/2
			498 (500-1 1/2)	798 (800-2 1/2)

EC-2, 22 FEB 2024 to 21 MAR 2024


EC-2, 22 FEB 2024 to 21 MAR 2024

WAAS CH 56310 W25A	APP CRS 252°	Rwy Idg 6005 TDZE 860 Apt Elev 862
--	------------------------	---

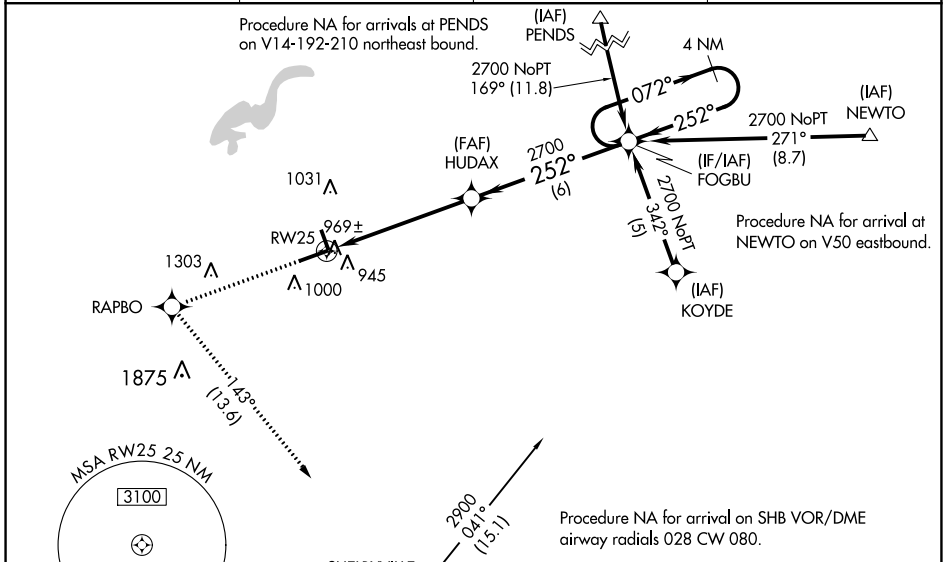
RNAV (GPS) RWY 25

INDIANAPOLIS RGNL (MQJ)

⚠ For uncompensated Baro-VNAV systems, LNAV/VNAV NA below -16°C (4°F) or above 54°C (130°F). Baro-VNAV and VDP NA when using Indianapolis Intl altimeter setting. DME/DME RNP-0.3 NA. When local altimeter setting not received, use Indianapolis Intl altimeter setting and increase all DA 55 feet and all MDA 60 feet, and increase all visibilities ½ SM. When using Indianapolis altimeter setting inoperative table does not apply. For inoperative ALS, increase LPV all Cats visibility to 1 SM.

MALSR
 MISSED APPROACH: Climb to 2900 direct RAPBO and on track 143° to SHB VOR/DME and hold.

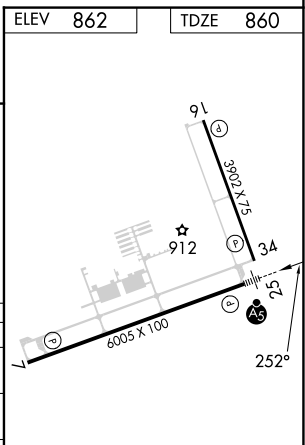
AWOS-3PT 124.175	INDIANAPOLIS APP CON 127.15 317.8	CLNC DEL 119.25	UNICOM 122.975 (CTAF) 📻
----------------------------	---	---------------------------	--



2900	RAPBO	ir 143°	SHB	HUDAX	FOGBU	4 NM Holding Pattern
------	-------	---------	-----	-------	-------	----------------------

*1 NM to RW25
*LNAV only

GP 3.00° TCH 53



CATEGORY	A	B	C	D
LPV DA		1160-½	300 (300-½)	
LNAV/VNAV DA		1259-⅞	399 (400-⅞)	
LNAV MDA	1220-½	360 (400-½)	1220-⅝	360 (400-⅝)

📻 CIRCLING	1340-1	478 (500-1)	1360-1½	498 (500-1½)	1660-2½	798 (800-2½)
-------------------	--------	-------------	---------	--------------	---------	--------------

EC-2, 22 FEB 2024 to 21 MAR 2024

EC-2, 22 FEB 2024 to 21 MAR 2024

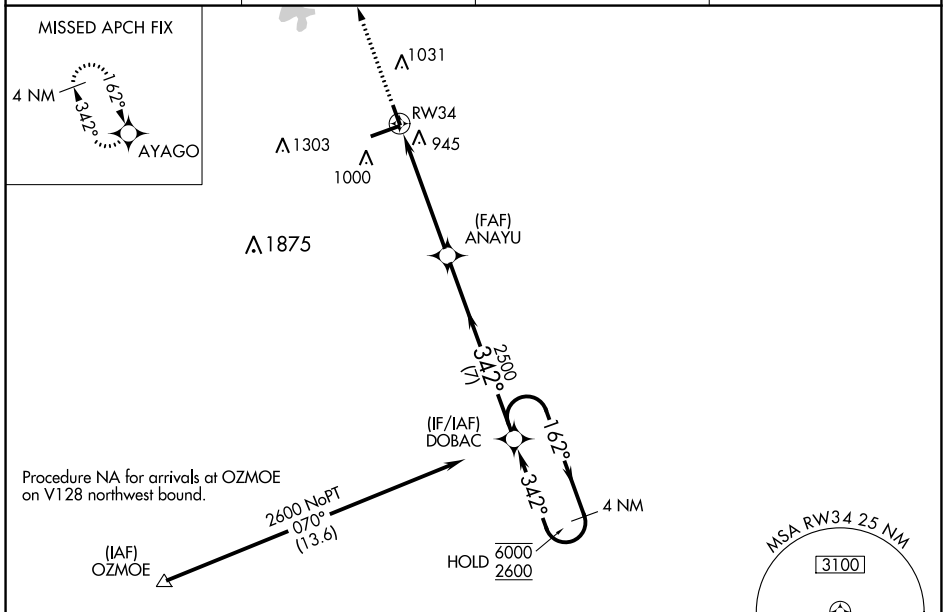
WAAS CH 45634 W34A	APP CRS 342°	Rwy Idg TDZE Apt Elev	3902 858 862
--	------------------------	-----------------------------	---

RNAV (GPS) RWY 34

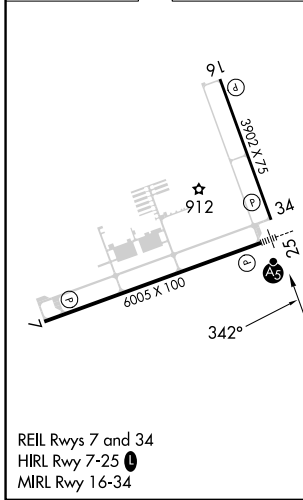
INDIANAPOLIS RGNL (MQJ)

RNP APCH.	MISSED APPROACH: Climb to 2500 direct AYAGO and hold.
NA For uncompensated Baro-VNAV systems, LNAV/VNAV NA below -16°C (4°F) or above 54°C (130°F).	

AWOS-3PT 124.175	INDIANAPOLIS APP CON 127.15 317.8	CLNC DEL 119.25	UNICOM 122.975 (CTAF)
----------------------------	---	---------------------------	---------------------------------



ELEV 862	TDZE 858
----------	----------



2500	AYAGO	VGSi and RNAV glidepath not coincident (VGSi Angle 3.00/TCH 49).		4 NM Holding Pattern
		ANAYU	2500	162° → 6000
* LNAV only.	* 1.3 NM to RW34	2500	342°	← 342° 2600
	RW34	2500	342°	GP 3.00° TCH 33
1.3 NM	3.8 NM	7 NM		
CATEGORY	A	B	C	D
LPV DA		1058- ³ / ₄	200 (200- ³ / ₄)	
LNAV/VNAV DA		1119- ⁷ / ₈	261 (300- ⁷ / ₈)	
LNAV MDA	1320-1	462 (500-1)	1320-1 ³ / ₈	462 (500-1 ³ / ₈)
CIRCLING	1340-1	478 (500-1)	1360-1 ¹ / ₂ 498 (500-1 ¹ / ₂)	1660-2 ¹ / ₂ 798 (800-2 ¹ / ₂)

EC-2, 22 FEB 2024 to 21 MAR 2024

EC-2, 22 FEB 2024 to 21 MAR 2024

VOR/DME SHB	APP CRS	Rwy Idg	3902
116.15	346°	TDZE	857
Chan 57		Apt Elev	862

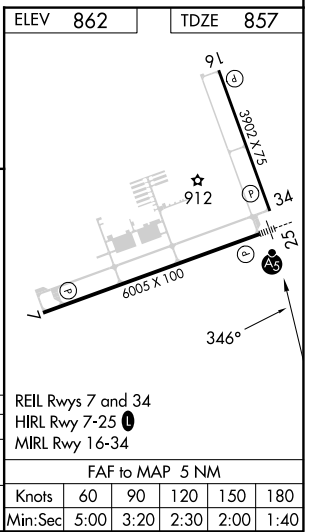
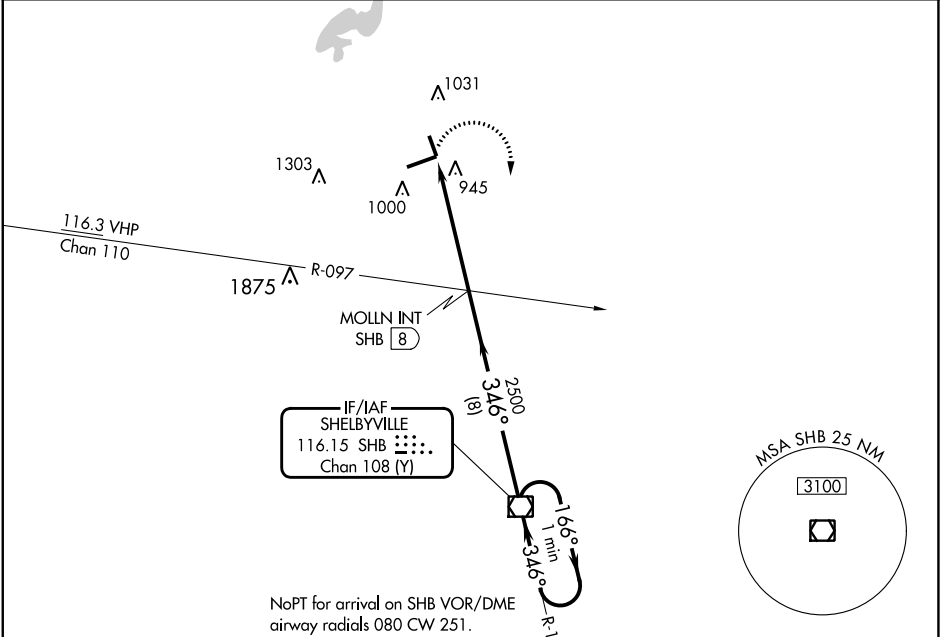
VOR RWY 34

INDIANAPOLIS RGNL (MQJ)

⚠ When local altimeter setting not received, use Indianapolis Intl altimeter setting and increase all MDA 60 feet and Circling Cat D visibility ¼ SM.
⚠ NA VDP NA when using Indianapolis Intl altimeter setting. Rwy 34 helicopter visibility reduction below ¾ SM NA.

MISSED APPROACH: Climbing right turn to 2500 direct SHB VOR/DME and hold.

AWOS-3PT	INDIANAPOLIS APP CON	CLNC DEL	UNICOM
124.175	127.15 317.8	119.25	122.975 (CTAF) 0



CATEGORY	A	B	C	D
S-34	1300-1	443 (500-1)	1300-1 3/8	443 (500-1 3/8)
C CIRCLING	1340-1	478 (500-1)	1360-1 1/2	1660-2 1/2
			498 (500-1 1/2)	798 (800-2 1/2)

EC-2, 22 FEB 2024 to 21 MAR 2024

EC-2, 22 FEB 2024 to 21 MAR 2024