

LOC I-MQB <b>110.3</b>	APP CRS <b>269°</b>	Rwy Idg TDZE Apt Elev	<b>5100</b> <b>686</b> <b>706</b>
---------------------------	------------------------	-----------------------------	---

# LOC RWY 27

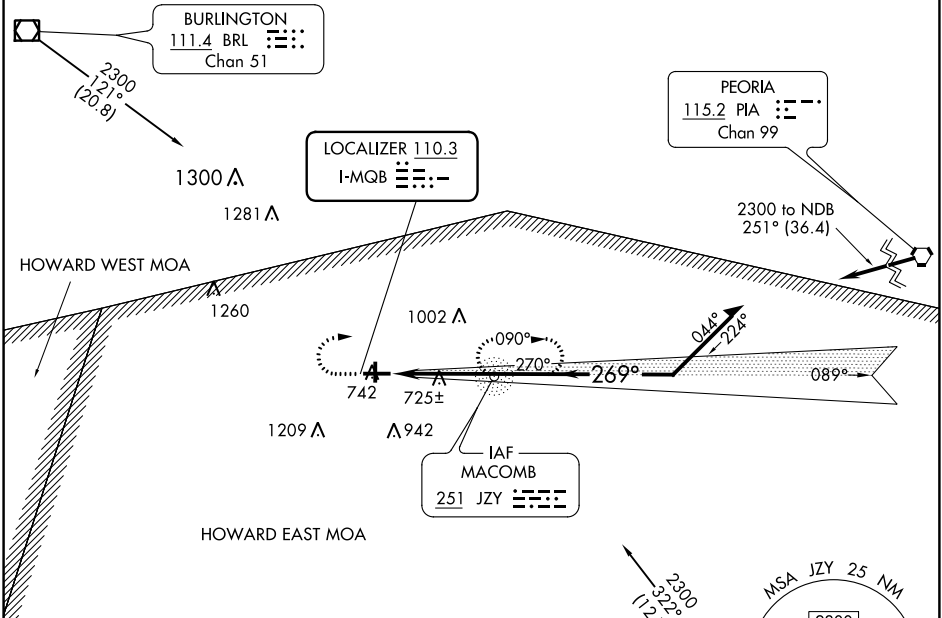
MACOMB MUNI (MQB)

ADF required.

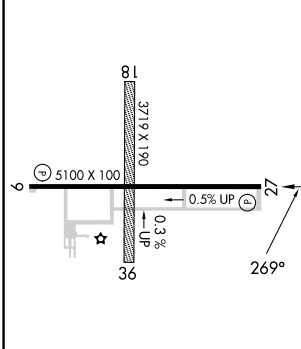
▲ NA Circling NA to Rws 18 and 36.

MISSED APPROACH: Climb to 2300 then right turn direct JZY NDB and hold.

AWOS-3 <b>119.025</b>	CHICAGO CENTER <b>135.6 316.1</b>	UNICOM <b>122.8</b> (CTAF) <b>0</b>
--------------------------	--------------------------------------	--



ELEV 706	TDZE 686
----------	----------

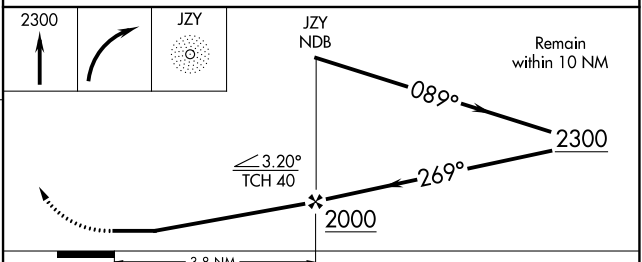


REIL Rws 9 and 27 **0**

HIRL Rwy 9-27 **0**

FAF to MAP 3.8 NM

Knots	60	90	120	150	180
Min:Sec	3:48	2:32	1:54	1:31	1:16



CATEGORY	A	B	C	D
S-27	980-1 294 (300-1)			
<b>C</b> CIRCLING	1140-1 434 (500-1)	1200-1 494 (500-1)	1520-2½ 814 (900-2½)	1520-2¾ 814 (900-2¾)

EC-3, 22 FEB 2024 to 21 MAR 2024

EC-3, 22 FEB 2024 to 21 MAR 2024

WAAS CH <b>40331</b> <b>W27A</b>	APP CRS <b>269°</b>	Rwy Idg TDZE Apt Elev	<b>5100</b> <b>686</b> <b>706</b>
--	------------------------	-----------------------------	---

# RNAV (GPS) RWY 27

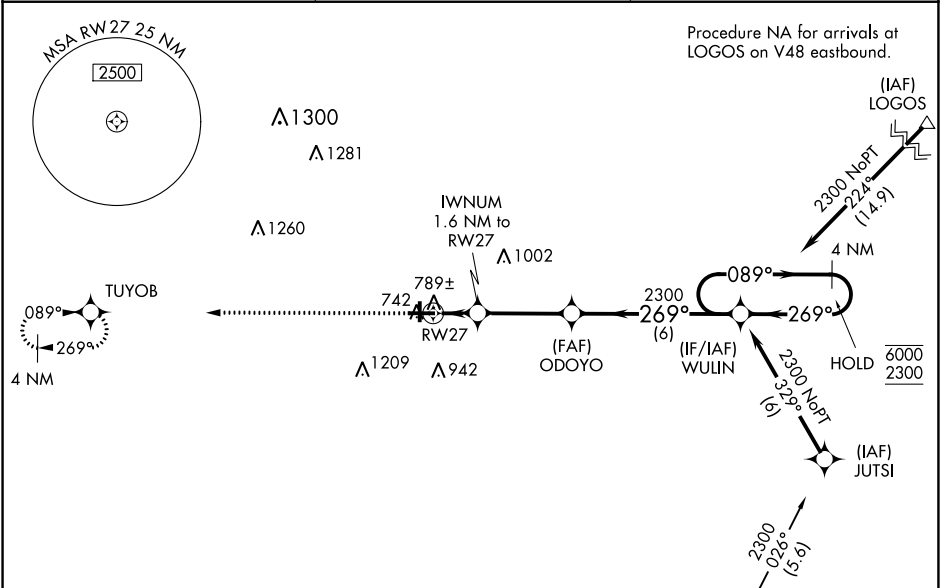
MACOMB MUNI (MQB)

RNP APCH - GPS.

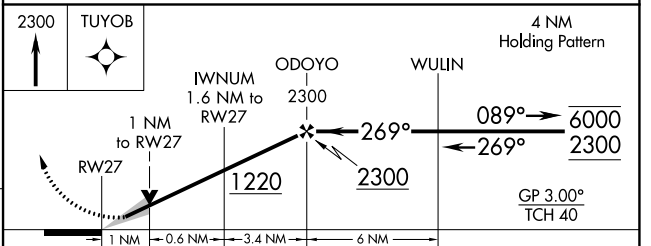
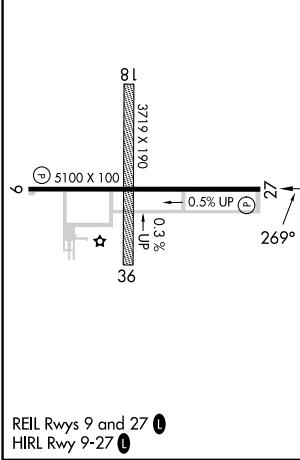
▼ Baro-VNAV and VDP NA when using Burlington altimeter setting. Circling NA to Rwy 18 and 36.  
 ▲ For uncompensated Baro-VNAV systems, LNAV/VNAV NA below -16°C or above 54°C. When local altimeter setting not received, use Burlington altimeter setting and increase LPV DA to 949 feet; increase LNAV/VNAV DA to 1040 feet; increase all MDAs 80 feet and visibility Cat C/D ¼ SM.

MISSED APPROACH:  
 Climb to 2300 direct TUYOB and hold.

AWOS-3 <b>119.025</b>	CHICAGO CENTER <b>135.6 316.1</b>	UNICOM <b>122.8 (CTAF) 0</b>
--------------------------	--------------------------------------	---------------------------------



ELEV 706	TDZE 686
----------	----------



CATEGORY	A	B	C	D
LPV DA		886-1	200 (200-1)	
LNAV/VNAV DA		977-1	291 (300-1)	
LNAV MDA		1040-1	354 (400-1)	
CIRCLING	1120-1 414 (500-1)	1260-1 554 (600-1)	1520-2½ 814 (900-2½)	1520-2¾ 814 (900-2¾)

EC-3, 22 FEB 2024 to 21 MAR 2024

EC-3, 22 FEB 2024 to 21 MAR 2024

WAAS CH <b>82531</b> <b>W09A</b>	APP CRS <b>089°</b>	Rwy Idg TDZE Apt Elev	<b>5100</b> <b>706</b> <b>706</b>
--	------------------------	-----------------------------	---

# RNAV (GPS) RWY 9

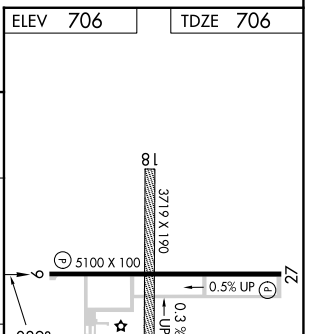
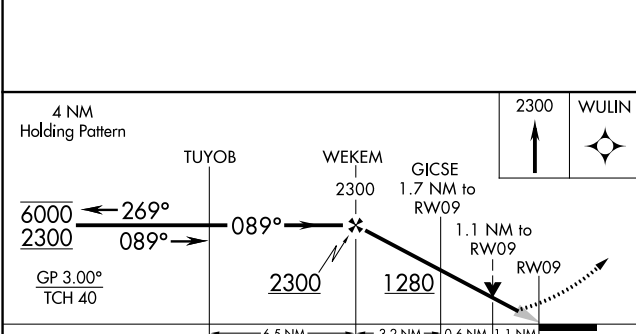
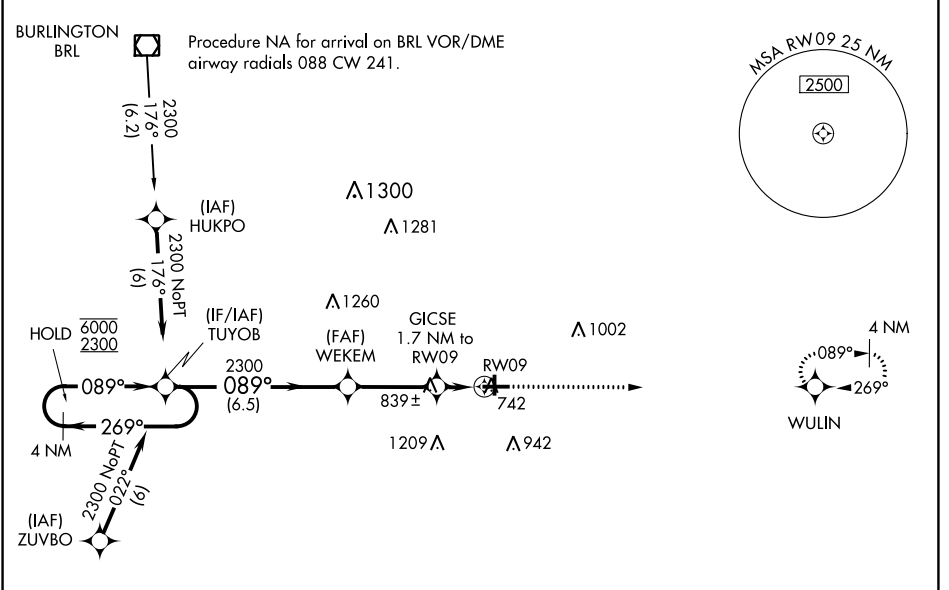
MACOMB MUNI (MQB)

RNP APCH - GPS.

**⚠** Circling NA to Rwy's 18 and 36. Baro-VNAV and VDP NA when using Burlington IA altimeter setting. For uncompensated Baro-VNAV systems, LNAV/VNAV NA below -16°C or above 54°C. When local altimeter setting not received, use Burlington IA altimeter setting; increase LPV DA to 969 feet and LNAV/VNAV DA to 1173 feet; increase all MDA 80 feet and visibility Cats C and D ¼ SM.

**⚠** MISSED APPROACH: Climb to 2300 direct WULIN and hold.

AWOS-3 <b>119.025</b>	CHICAGO CENTER <b>135.6 316.1</b>	UNICOM <b>122.8 (CTAF)</b>
--------------------------	--------------------------------------	-------------------------------



CATEGORY	A	B	C	D
LPV DA		906-1	200 (200-1)	
LNAV/VNAV DA		1110-1 <sup>3</sup> / <sub>8</sub>	404 (500-1 <sup>3</sup> / <sub>8</sub> )	
LNAV MDA	1100-1	394 (400-1)	1100-1 <sup>1</sup> / <sub>8</sub>	394 (400-1 <sup>1</sup> / <sub>8</sub> )
CIRCLING	1120-1 414 (500-1)	1260-1 554 (600-1)	1520-2 <sup>1</sup> / <sub>2</sub> 814 (900-2 <sup>1</sup> / <sub>2</sub> )	1520-2 <sup>3</sup> / <sub>4</sub> 814 (900-2 <sup>3</sup> / <sub>4</sub> )

REIL Rwy's 9 and 27

HIRL Rwy 9-27

EC-3, 22 FEB 2024 to 21 MAR 2024

EC-3, 22 FEB 2024 to 21 MAR 2024