

WAAS CH 78115 W18A	APP CRS 185°	Rwy Idg TDZE Apt Elev	5001 454 458
--	------------------------	-----------------------------	---

RNAV (GPS) RWY 18

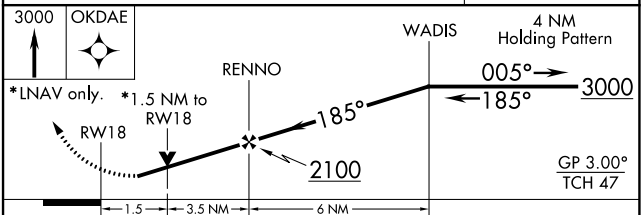
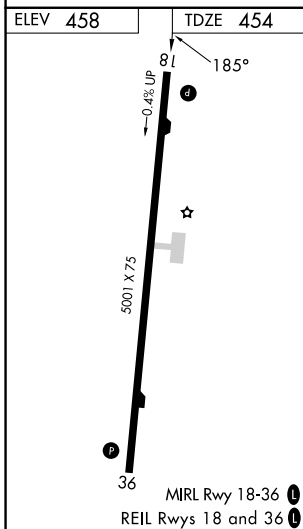
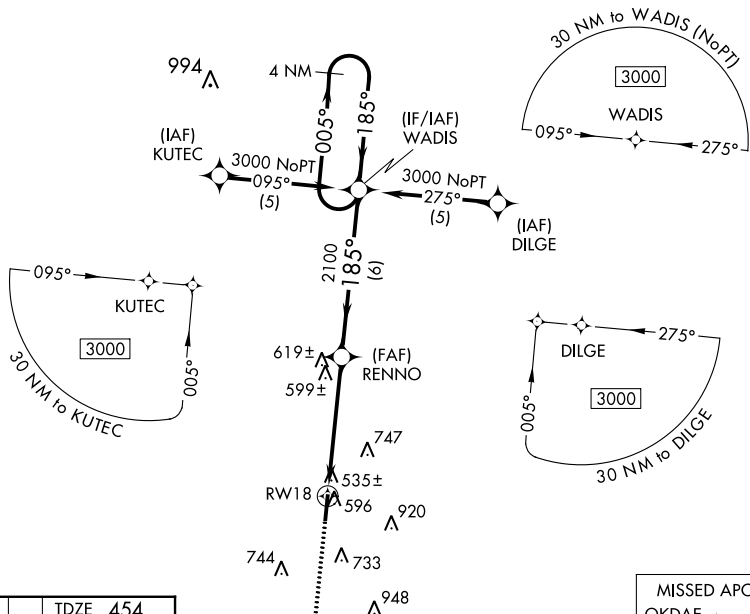
PHILADELPHIA MUNI (MPPE)

⚠ For uncompensated Baro-VNAV systems, LNAV/VNAV NA below -15°C (5°F) or above 48°C (118°F). DME/DME RNP-0.3 NA. Visibility reduction by helicopters NA.

⚠ When local altimeter setting not received, use Key Fld altimeter setting and increase all DA 101 feet and all MDA 120 feet and increase LPV all Cats, LNAV Cat C and Circling Cats C and D visibility ¼ mile, increase LNAV/VNAV all Cats, LNAV Cat D visibility ½ mile. Baro-VNAV and VDP NA when using Key Fld altimeter setting.

MISSED APPROACH:
Climb to 3000 direct OKDAE and hold.

AWOS-3P 118.725	MEMPHIS CENTER 132.75 263.0	UNICOM 123.0 (CTAF) 0
---------------------------	---------------------------------------	---------------------------------



CATEGORY	A	B	C	D
LPV DA	774-1¼ 320 (400-1¼)			
LNAV/VNAV DA	850-1½ 396 (400-1½)			
LNAV MDA	960-1 506 (600-1)		960-1½ 506 (600-1½)	
CIRCLING	1060-1 602 (700-1)		1280-2½ 822 (900-2½) 1280-2¾ 822 (900-2¾)	

SC-4, 22 FEB 2024 to 21 MAR 2024

SC-4, 22 FEB 2024 to 21 MAR 2024

WAAS CH 48915 W36A	APP CRS 005°	Rwy Idg 5001 TDZE 458 Apt Elev 458
--	------------------------	---

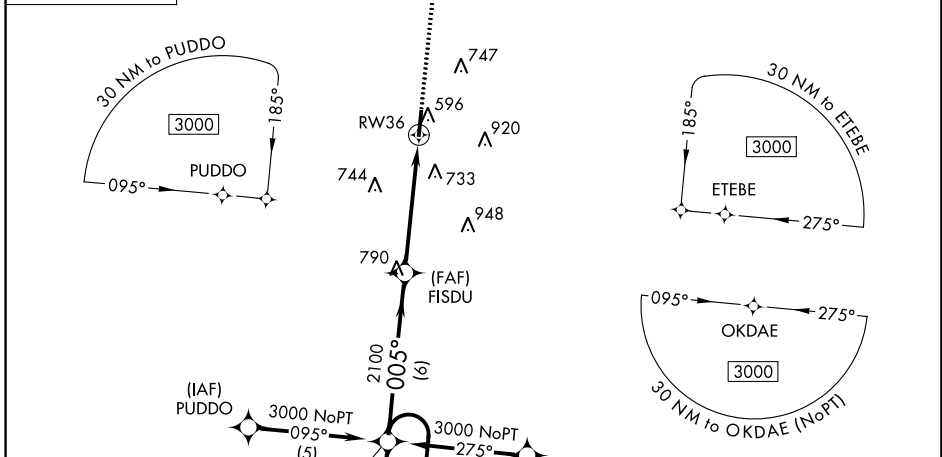
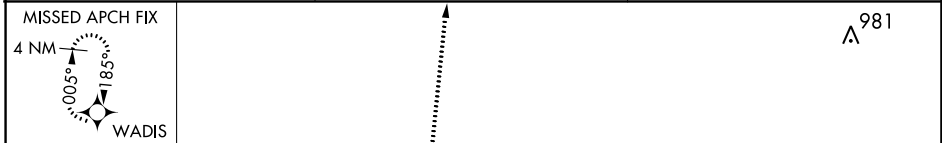
RNAV (GPS) RWY 36

PHILADELPHIA MUNI (MPPE)

⚠ For uncompensated Baro-VNAV systems, LNAV/VNAV NA below -1.5°C (5°F) or above 48°C (118°F). DME/DME RNP-0.3 NA. Visibility reduction by helicopters NA. When local altimeter setting not received, use Key Fld altimeter setting and increase all DA 101 feet and all MDA 120 feet and increase LPV, LNAV/VNAV all Cats, LNAV Cats C and D visibility ½ mile, increase Circling Cats C and D visibility ¼ mile. Baro-VNAV and VDP NA when using Key Fld altimeter setting.

MISSED APPROACH:
Climb to 3000 direct WADIS and hold.

AWOS-3P 118.725	MEMPHIS CENTER 132.75 263.0	UNICOM 123.0 (CTAF)
---------------------------	---------------------------------------	-------------------------------

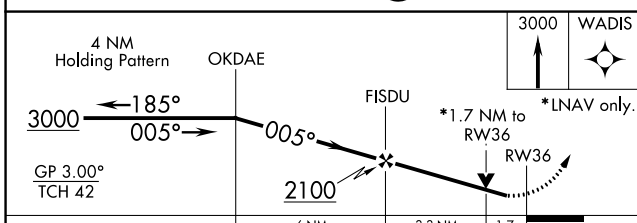
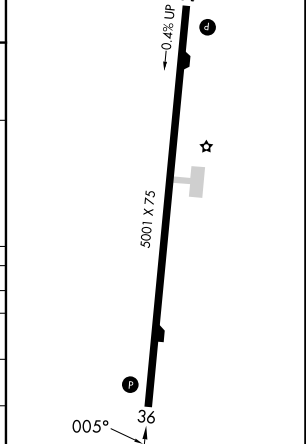


SC-4, 22 FEB 2024 to 21 MAR 2024

SC-4, 22 FEB 2024 to 21 MAR 2024

ELEV 458	TDZE 458
----------	----------

REIL Rwy 18 and 36
MIRL Rwy 18-36



CATEGORY	A	B	C	D
LPV DA		838-1¼	380 (400-1¼)	
LNAV/VNAV DA		1107-2¼	649 (700-2¼)	
LNAV MDA	1040-1	582 (600-1)	1040-1½ 582 (600-1½)	1040-1¾ 582 (600-1¾)
CIRCLING	1060-1	602 (700-1)	1280-2½ 822 (900-2½)	1280-2¾ 822 (900-2¾)