

| | |
|------------------------|------------------------|
| APP CRS 012° | Rwy Idg 5004 |
| | TDZE 278 |
| | Apt Elev 278 |

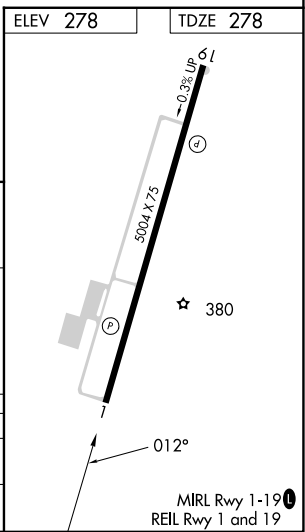
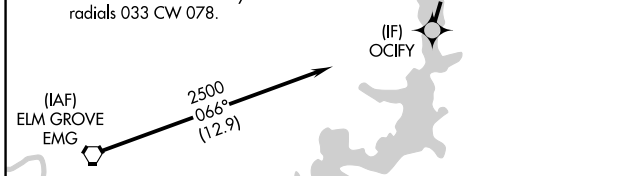
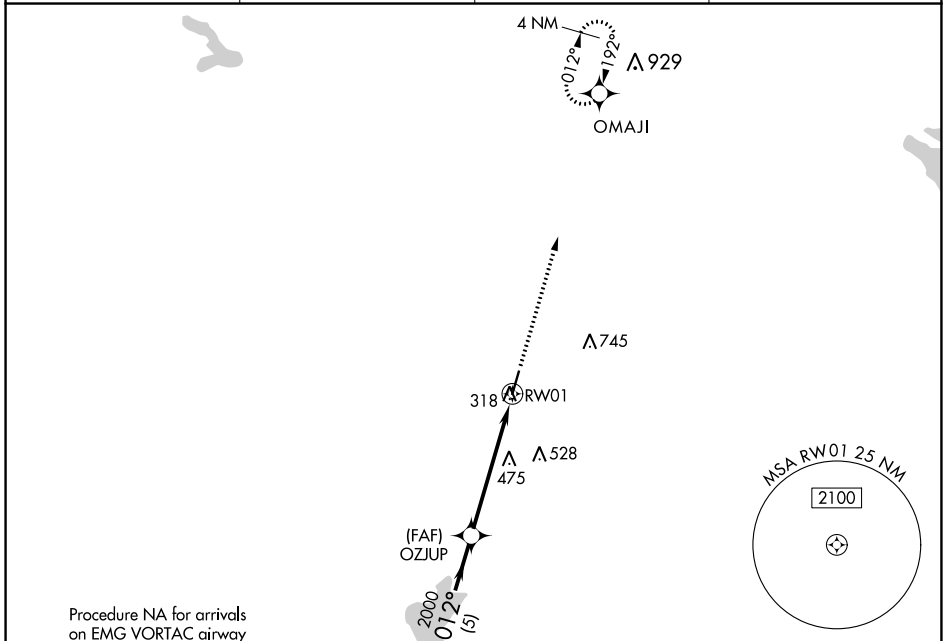
RNAV (GPS) RWY 1

MINDEN (MNE)

⚠ When VGSI inop, procedure NA at night. DME/DME RNP-0.3 NA. Helicopter visibility reduction below 1 SM NA. When local altimeter setting not received, use Barksdale AFB altimeter setting; increase all MDA 80 feet, increase LNAV visibility Cats C/D ½ SM and Circling visibility Cats C/D ¼ SM.

MISSED APPROACH:
Climb to 2500 direct OMAJI and hold.

| | | | |
|----------------------------|---|-----------------------|-------------------------------|
| AWOS-3PT 119.325 | SHREVEPORT APP CON 123.75 360.725 | GCO 135.075 | UNICOM 122.8 (CTAF) |
|----------------------------|---|-----------------------|-------------------------------|



| CATEGORY | A | B | C | D |
|----------|----------------------|----------------------|-------------------------------|-------------------------------|
| LNAV MDA | 780-1 | 502 (600-1) | 780-1 3/8 | 502 (600-1 3/8) |
| CIRCLING | 780-1 502 (600-1) | 820-1 542 (600-1) | 1060-2 1/4 782 (800-2 1/4) | 1060-2 1/2 782 (800-2 1/2) |

SC-4, 22 FEB 2024 to 21 MAR 2024

SC-4, 22 FEB 2024 to 21 MAR 2024

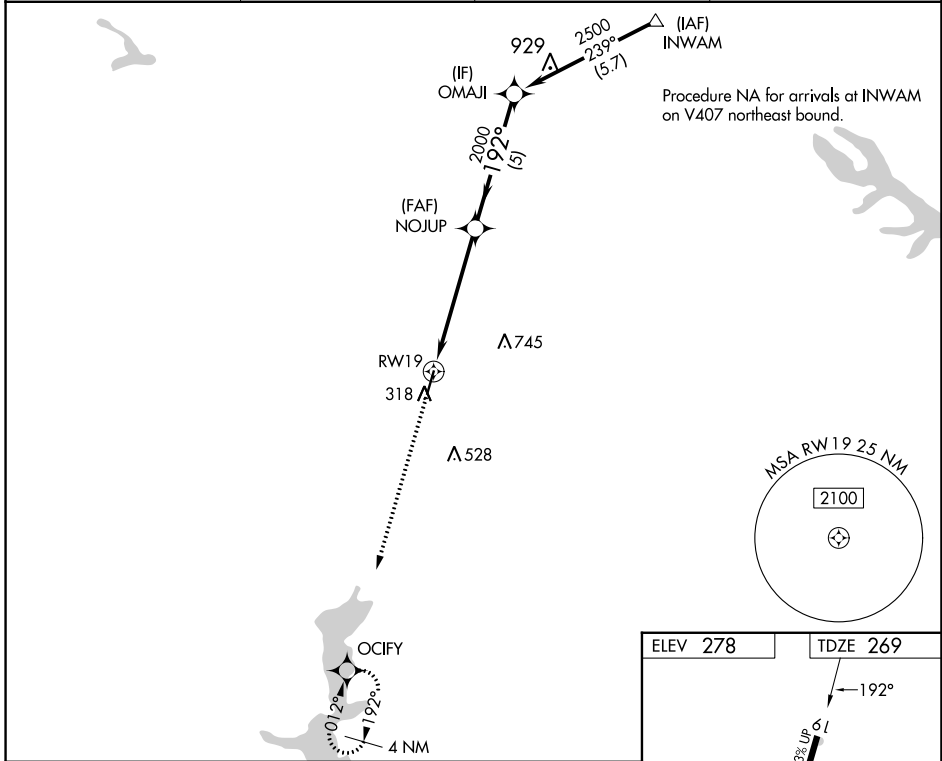
| | | |
|-------------|----------|-------------|
| APP CRS | Rwy Idg | 5004 |
| 192° | TDZE | 269 |
| | Apt Elev | 278 |

RNAV (GPS) RWY 19

MINDEN (MNE)

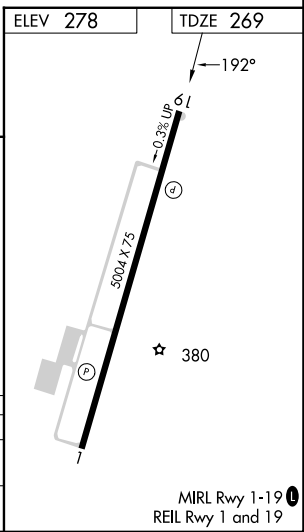
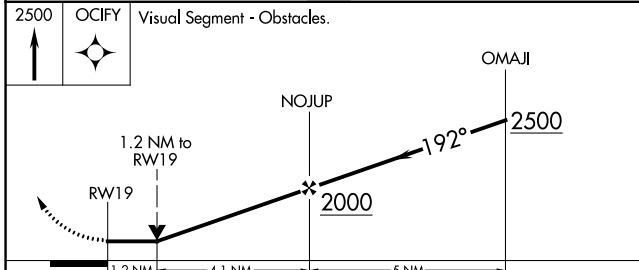
| | |
|---|---|
| RNP APCH. | MISSED APPROACH: Climb to 2500 direct OCIFY and hold. |
| ▼ Rwy 19 helicopter visibility reduction below 3/4 SM NA. When local altimeter setting not received, use Barksdale AFB altimeter setting; increase all MDAs 80 feet: increase visibility LNAV Cats C/D 1/2 SM and Circling Cats C/D 1/4 SM. | |

| | | | |
|----------------------------|---|-----------------------|--|
| AWOS-3PT 119.325 | SHREVEPORT APP CON 123.75 360.725 | GCO 135.075 | UNICOM 122.8 (CTAF) 1 |
|----------------------------|---|-----------------------|--|



SC-4, 22 FEB 2024 to 21 MAR 2024

SC-4, 22 FEB 2024 to 21 MAR 2024



| CATEGORY | A | B | C | D |
|----------|-------|-------------|-------------------------------|-------------------------------|
| LNAV MDA | 820-1 | 551 (600-1) | 820-1 1/2 | 551 (600-1 1/2) |
| CIRCLING | 820-1 | 542 (600-1) | 1060-2 1/4 782 (800-2 1/4) | 1060-2 1/2 782 (800-2 1/2) |

| | | |
|---|------------------------|--|
| VORTAC EIC 117.4 Chan 121 | APP CRS 099° | Rwy ldg TDZE Apt Elev N/A N/A 278 |
|---|------------------------|--|

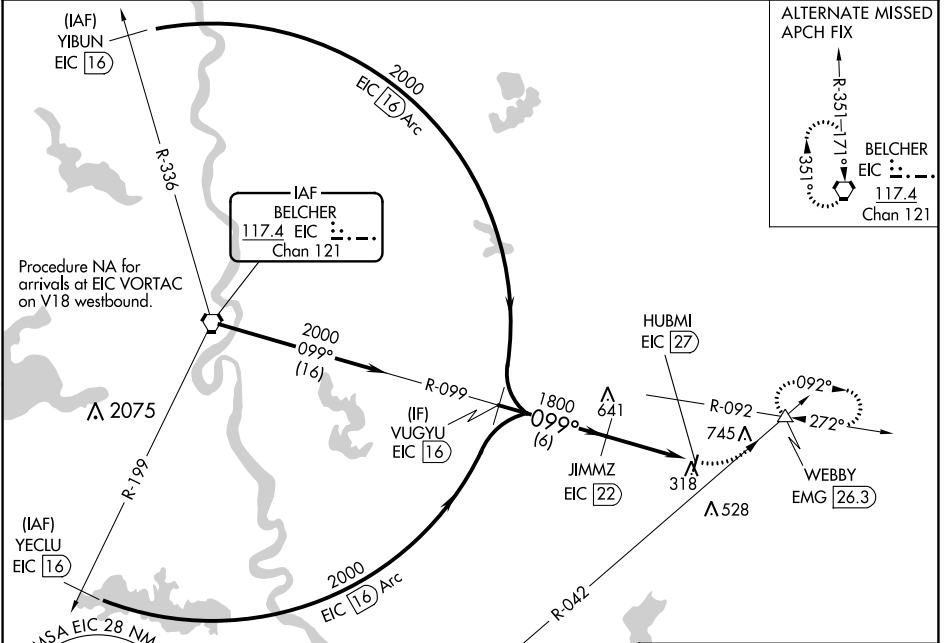
VOR/DME-A

MINDEN (MNE)

⚠ When VGSI inoperative, procedure NA at night. When local altimeter setting not received, use Barksdale AFB altimeter setting. Visibility reduction by helicopters NA.

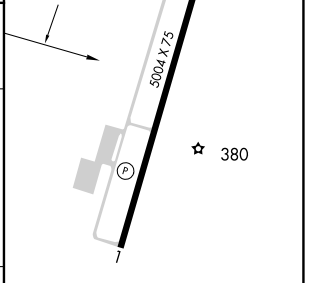
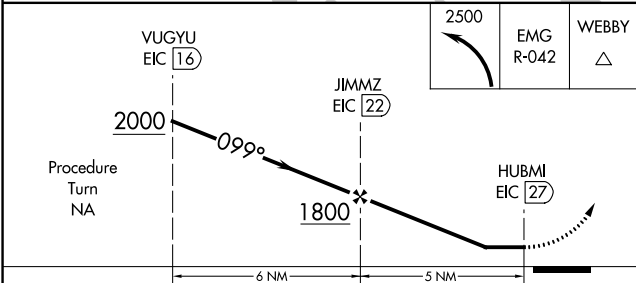
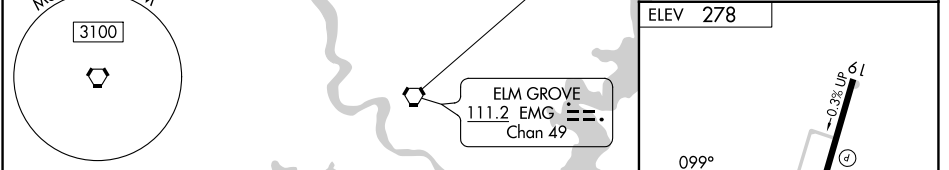
MISSED APPROACH: Climbing left turn to 2500 and EMG VORTAC R-042 to WEBBY INT/EMG 26.3 DME and hold.

| | | | |
|----------------------------|---|-----------------------|--|
| AWOS-3PT 119.325 | SHREVEPORT APP CON 123.75 360.725 | GCO 135.075 | UNICOM 122.8 (CTAF) 📻 |
|----------------------------|---|-----------------------|--|



SC-4, 22 FEB 2024 to 21 MAR 2024

SC-4, 22 FEB 2024 to 21 MAR 2024



| CATEGORY | A | B | C | D |
|-------------------|---------------------------|---------------------------|--------|---------------|
| 📻 CIRCLING | 1540-1¼ 1262 (1300-1¼) | 1540-1½ 1262 (1300-1½) | 1540-3 | 1262 (1300-3) |

MIRL Rwy 1-19 **📻**
REIL Rwy 1 and 19