

WAAS CH 82517 W12A	APP CRS 120°	Rwy Idg 4501 TDZE 413 Apt Elev 425
---------------------------------	------------------------	---

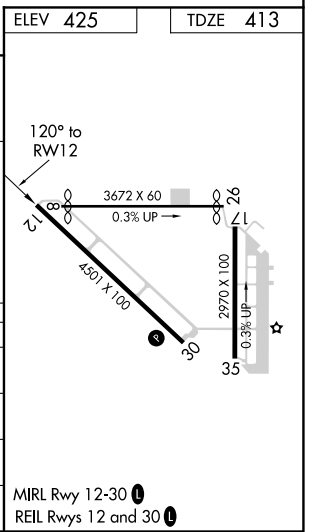
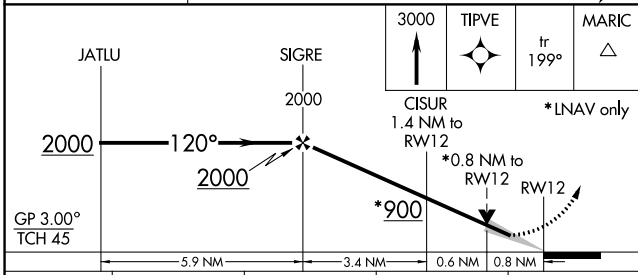
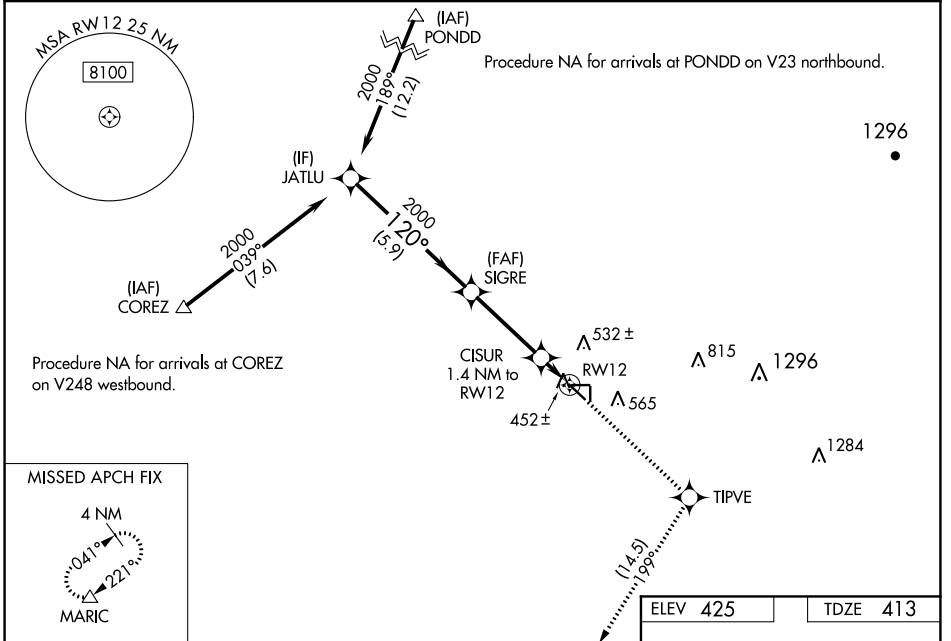
RNAV (GPS) RWY 12

SHAFTER-MINTER FIELD (MIT)

NA Baro-VNAV NA when using Bakersfield altimeter setting. For uncompensated Baro-VNAV systems, LNAV/VNAV NA below -15°C (5°F) or above 54°C (130°F).
 When local altimeter setting not received, use Bakersfield altimeter setting and increase LPV and LNAV/VNAV DA to 694 feet and LNAV/VNAV visibility to 7/8 all Cats; increase all MDA 40 feet. DME/DME RNP-0.3 NA.
 Night Landing Rwy 17, 35, 8, 26 NA.

MISSED APPROACH: Climb to 3000 direct TIPVE and on track 199° to MARIC and hold.

AWOS-3 121.125	BAKERSFIELD APP CON ★ 126.45 270.3	CTAF 122.9
--------------------------	--	----------------------



CATEGORY	A	B	C	D
LPV DA		663-3/4 250 (300-3/4)		NA
LNAV/VNAV DA		663-3/4 250 (300-3/4)		NA
LNAV MDA		720-1 307 (300-1)		NA
CIRCLING	900-1	475 (500-1)	900-1 1/2 475 (500-1 1/2)	NA

SW-3, 22 APR 2021 to 20 MAY 2021

SW-3, 22 APR 2021 to 20 MAY 2021

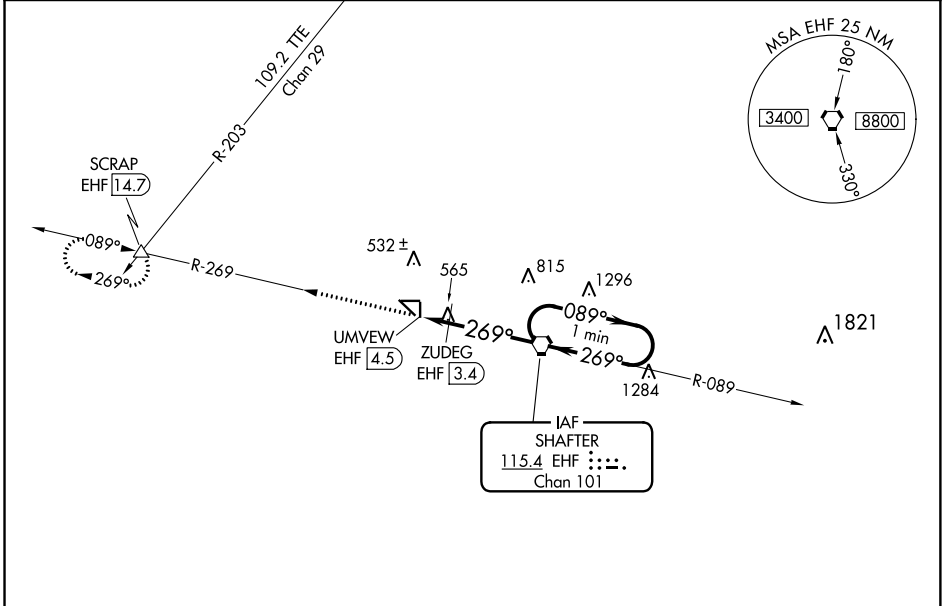
VORTAC EHF 115.4 Chan 101	APP CRS 269°	Rwy Idg TDZE Apt Elev	N/A N/A 425
---	------------------------	-----------------------------	--

VOR-A
SHAFTER-MINTER FIELD (MIT)

NA Circling to Rwy 17, 35, 8 and 26 NA at night. When local altimeter setting not received, use Bakersfield altimeter setting and increase all MDAS 40 feet and increase Cat C visibility to 1 3/4.

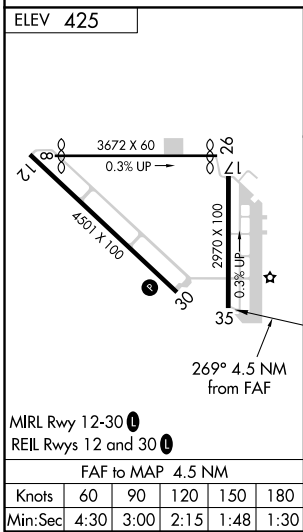
MISSED APPROACH: Climb to 4000 on EHF VORTAC R-269 to SCRAP INT/EHF 14.7 DME and hold, continue climb-in-hold to 4000.

AWOS-3 121.125	BAKERSFIELD APP CON * 126.45 270.3	CTAF 122.9
--------------------------	--	----------------------



SW-3, 22 APR 2021 to 20 MAY 2021

SW-3, 22 APR 2021 to 20 MAY 2021



4000 EHF R-269	SCRAP △	One Minute Holding Pattern			
	ZUDEG EHF 3.4	EHF VORTAC			
UMVEW EHF 4.5	269°		2600	089°	2900
1000*		1.1 NM	3.4 NM	*1040 when using Bakersfield altimeter setting.	
CATEGORY	A	B	C	D	
CIRCLING	1000-1	575 (600-1)	1000-1½	575 (600-1½) NA	
ZUDEG FIX MINIMUMS					
CIRCLING	900-1	475 (500-1)	900-1½	475 (500-1½) NA	