

WAAS CH 86231	APP CRS 156°	Rwy Idg TDZE 1459	4435
W16A		Apt Elev 1478	

RNAV (GPS) RWY 16

TAYLOR COUNTY (MDZ)

RNP APCH.

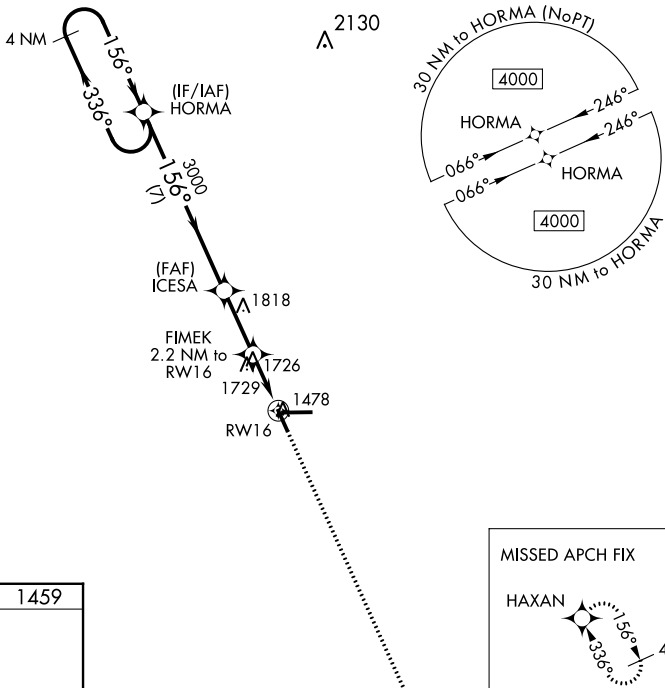
⚠ When local altimeter setting not received, use Merrill altimeter setting and increase all MDA 100 feet and increase all Cat C/D visibility $\frac{1}{4}$ mile. Rwy 16 helicopter visibility reduction below $\frac{3}{4}$ SM NA. VDP NA when using Merrill altimeter setting.

MISSED APPROACH:
Climb to 4000 direct HAXAN and hold.

AWOS-3
119.025

MINNEAPOLIS CENTER
124.4 317.7

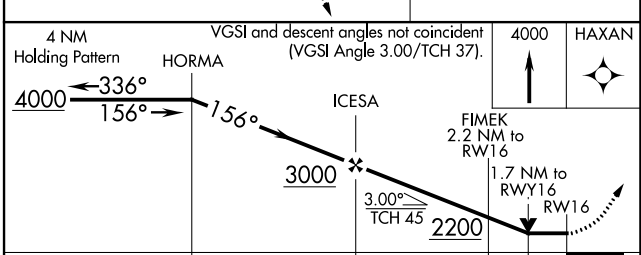
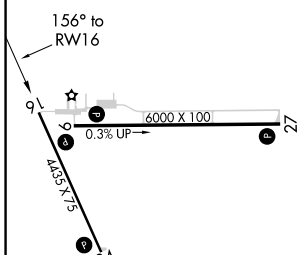
UNICOM
122.8 (CTAF) Ⓛ



EC-3, 22 FEB 2024 to 21 MAR 2024

EC-3, 22 FEB 2024 to 21 MAR 2024

ELEV 1478	TDZE 1459
-----------	-----------



CATEGORY	A	B	C	D
LP MDA	2040-1	581 (600-1)	2040-1 $\frac{3}{4}$	581 (600-1 $\frac{3}{4}$)
LNAV MDA	2060-1	601 (600-1)	2060-1 $\frac{3}{4}$	601 (600-1 $\frac{3}{4}$)
CIRCLING	2060-1	582 (600-1)	2060-1 $\frac{3}{4}$ 582 (600-1 $\frac{3}{4}$)	2180-2 $\frac{1}{4}$ 702 (800-2 $\frac{1}{4}$)

REIL Rwys 9, 27 and 34 Ⓛ
MIRL Rwys 9-27 and 16-34 Ⓛ

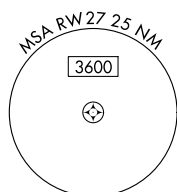
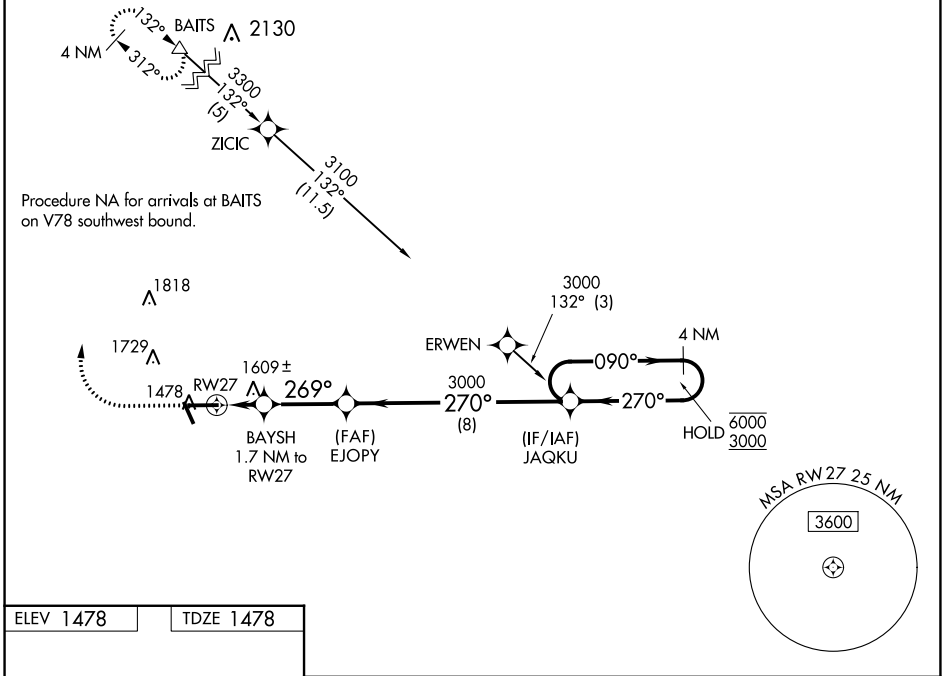
WAAS CH 66011 W27A	APP CRS 269°	Rwy Idg TDZE 1478 Apt Elev 1478	6000
--	------------------------	---	-------------

RNAV (GPS) RWY 27

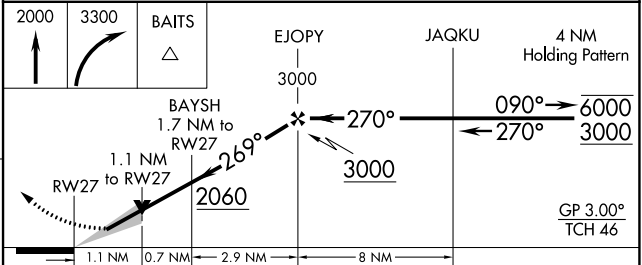
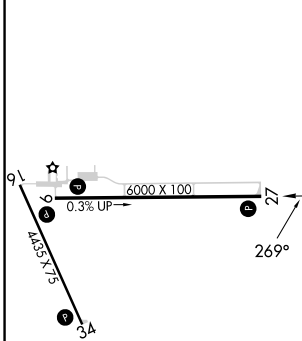
TAYLOR COUNTY (MDZ)

RNP APCH-GPS.	MISSED APPROACH: Climb to 2000 then climbing right turn to 3300 direct BAITS and hold.
⚠ For uncompensated Baro-VNAV systems, LNAV/VNAV NA below -17°C or above 54°C.	

AWOS-3 119.025	MINNEAPOLIS CENTER 124.4 317.7	UNICOM 122.8 (CTAF) 0
--------------------------	--	---------------------------------



ELEV 1478	TDZE 1478
-----------	-----------



CATEGORY	A	B	C	D
LPV DA		1678- ³ / ₄	200 (200- ³ / ₄)	
LNAV/VNAV DA		1877-1 ¹ / ₈	399 (400-1 ¹ / ₈)	
LNAV MDA	1860-1	382 (400-1)	1860-1 ¹ / ₈	382 (400-1 ¹ / ₈)
C CIRCLING	1900-1 422 (500-1)	2040-1 562 (600-1)	2040-1 ¹ / ₂ 562 (600-1 ¹ / ₂)	2180-2 ¹ / ₄ 702 (800-2 ¹ / ₄)

REIL Rwy 9, 27 and 34 0
MIRL Rwy 9-27 and 16-34 0

EC-3, 22 FEB 2024 to 21 MAR 2024

EC-3, 22 FEB 2024 to 21 MAR 2024

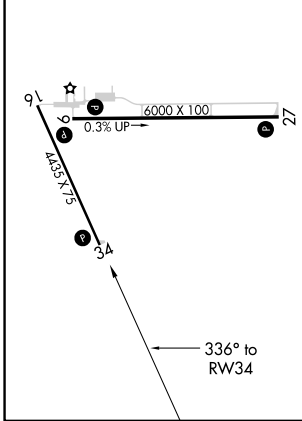
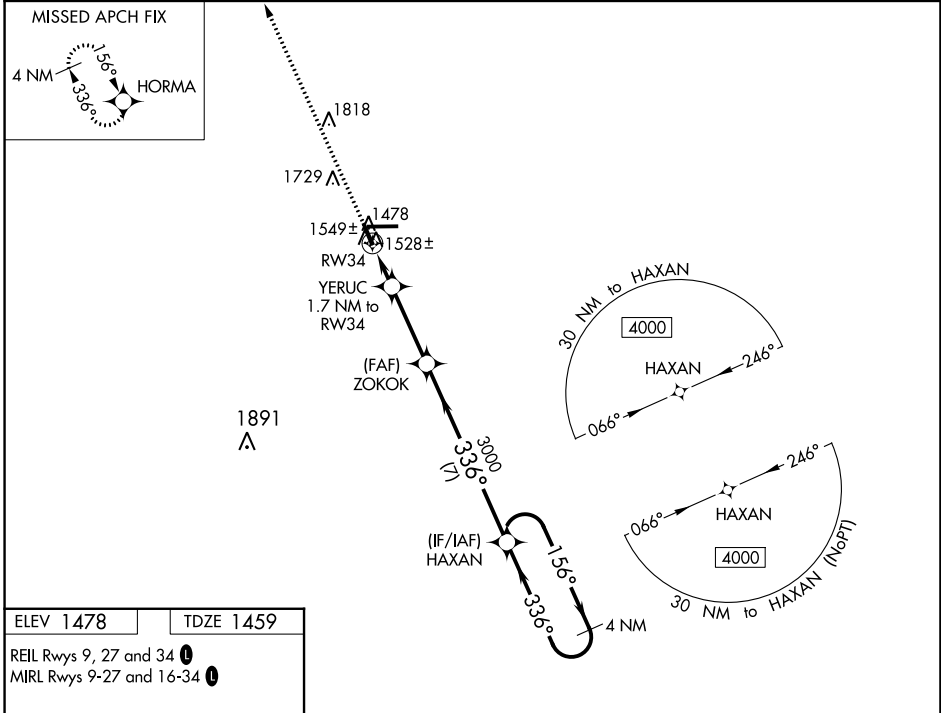
WAAS CH 73029 W34A	APP CRS 336°	Rwy Idg TDZE Apt Elev	4435 1459 1478
--	------------------------	-----------------------------	---

RNAV (GPS) RWY 34

TAYLOR COUNTY (MDZ)

RNP APCH.	MISSED APPROACH: Climb to 4000 direct HORMA and hold.
<p>▼ When local altimeter setting not received, use Merrill altimeter setting: increase all MDA 100 feet and all Cat C and D visibilities ¼ SM. VDP NA when using Merrill altimeter setting.</p>	

AWOS-3 119.025	MINNEAPOLIS CENTER 124.4 317.7	UNICOM 122.8 (CTAF) 0
--------------------------	--	---------------------------------



4000	HORMA	VGSI and descent angles not coincident (VGSI Angle 3.00/TCH 27).	HAXAN	4 NM Holding Pattern
4000	YERUC 1.7 NM to RW34	ZOKOK	HAXAN	4000
3000	RW34 0.9 NM to RW34	2020	3000	336°
3000	3.00° TCH 45	3000	336°	336°
3000	0.9-0.8	3 NM	7 NM	
CATEGORY	A	B	C	D
LP MDA	1780-1 321 (400-1)			
LNAV MDA	1800-1 341 (400-1)			
CIRCLING	1940-1 462 (500-1)	2040-1 562 (600-1)	2040-1½ 562 (600-1½)	2180-2¼ 702 (800-2¼)

EC-3, 22 FEB 2024 to 21 MAR 2024

EC-3, 22 FEB 2024 to 21 MAR 2024

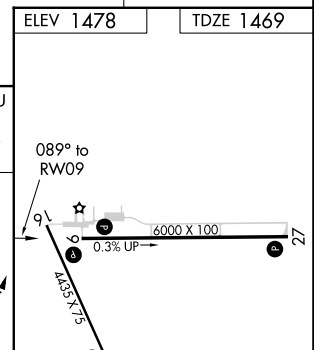
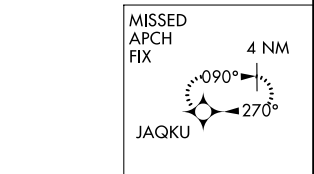
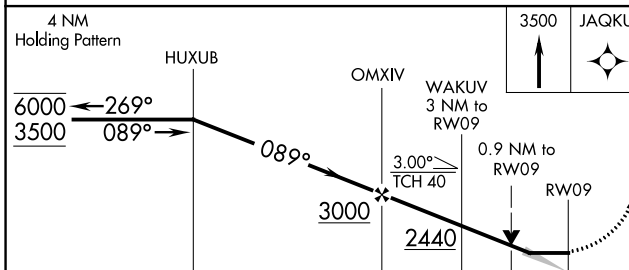
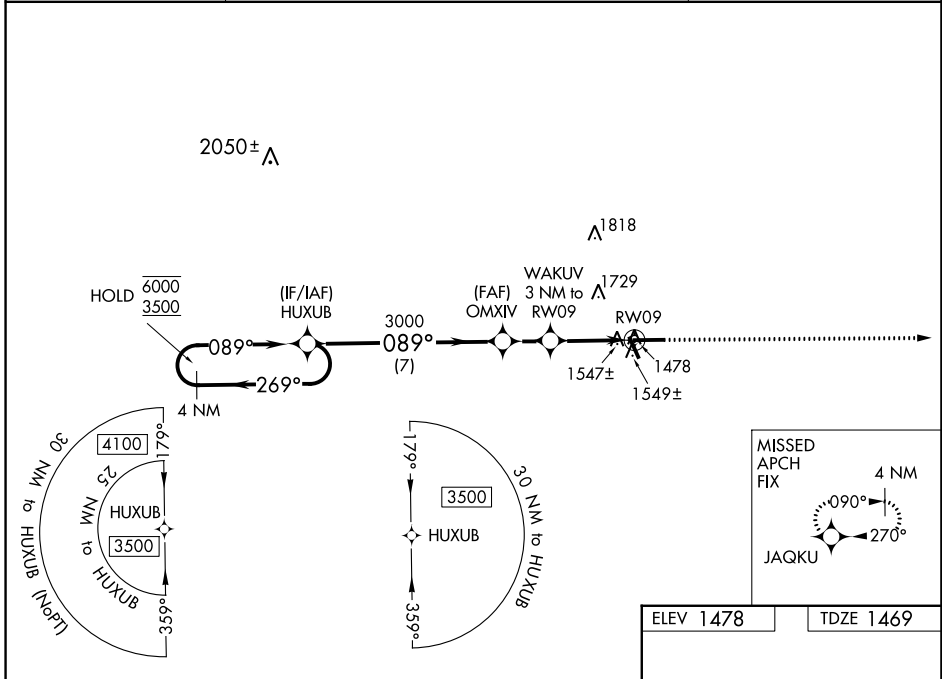
WAAS CH 99331 W09A	APP CRS 089°	Rwy Idg TDZE 1469 Apt Elev 1478	6000
--	------------------------	---	-------------

RNAV (GPS) RWY 9

TAYLOR COUNTY (MDZ)

RNP APCH.	MISSED APPROACH: Climb to 3500 direct JAQKU and hold.
-----------	---

AWOS-3 119.025	MINNEAPOLIS CENTER 124.4 317.7	UNICOM 122.8 (CTAF)
--------------------------	--	-------------------------------



CATEGORY	A	B	C	D	
LP MDA	1800-1	331 (400-1)			
LNAV MDA	1800-1	331 (400-1)			
CIRCLING	1900-1 422 (500-1)	2040-1 562 (600-1)	2040-1½ 562 (600-1½)	2180-2¼ 702 (800-2¼)	REIL Rwy 9, 27 and 34 MRL Rwy 9-27 and 16-34

EC-3, 22 FEB 2024 to 21 MAR 2024

EC-3, 22 FEB 2024 to 21 MAR 2024