

LOC I-MDT <b>110.9</b>	APP CRS <b>128°</b>	Rwy Idg <b>8070</b>
		TDZE <b>308</b>
		Apt Elev <b>310</b>

# ILS RWY 13 (CAT II & III)

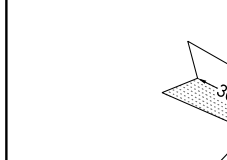
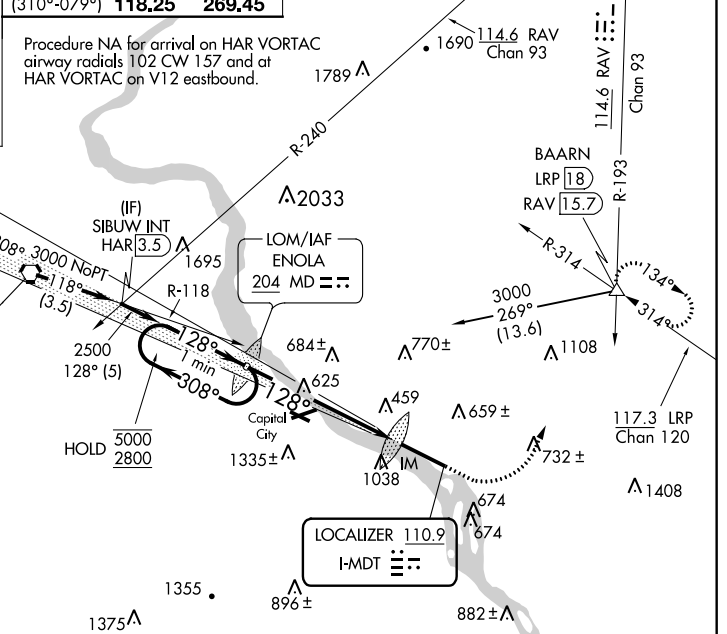
HARRISBURG INTL (MDT)

-17°C	ALSF-2 	MISSED APPROACH: Climb to 900 then climbing left turn to 3000 on heading 060° and RAV VORTAC R-193 to BAARN INT/LRP 18 DME and hold.
-------	------------	--

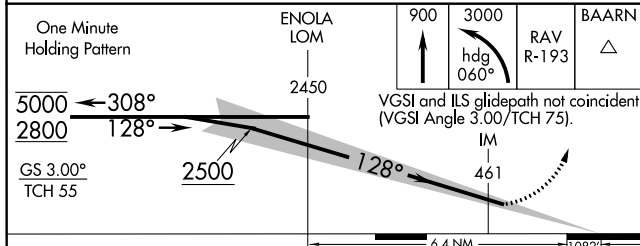
ATIS <b>118.8</b>	HARRISBURG APP CON (080°-179°) <b>126.45 281.525</b> (180°-309°) <b>124.1 273.525</b> (310°-079°) <b>118.25 269.45</b>	HARRISBURG INTL TOWER <b>124.8 269.35</b>	GND CON <b>121.7 348.6</b>
----------------------	---	--	-------------------------------

ALTERNATE MISSED APCH FIX

HARRISBURG HAR 115.35  
Chan 100 (Y)

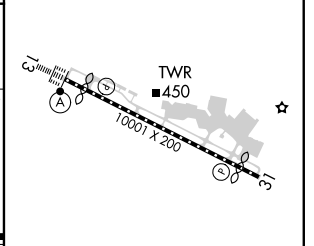


ELEV 310		TDZE 308
----------	--	----------



CATEGORY	A	B	C	D
S-ILS 13	CAT II RA 101/12 100 DA 408			
S-ILS 13		CAT III	RVR 06	

**CATEGORY II & III ILS - SPECIAL AIRCREW & AIRCRAFT CERTIFICATION REQUIRED**



TDZ/CL Rwy 13
REIL Rwy 31
HIRL Rwy 13-31

NE-4, 22 FEB 2024 to 21 MAR 2024

NE-4, 22 FEB 2024 to 21 MAR 2024

LOC I-MDT <b>110.9</b>	APP CRS <b>128°</b>	Rwy Idg <b>8070</b>
		TDZE <b>308</b>
		Apt Elev <b>310</b>

# ILS or LOC RWY 13

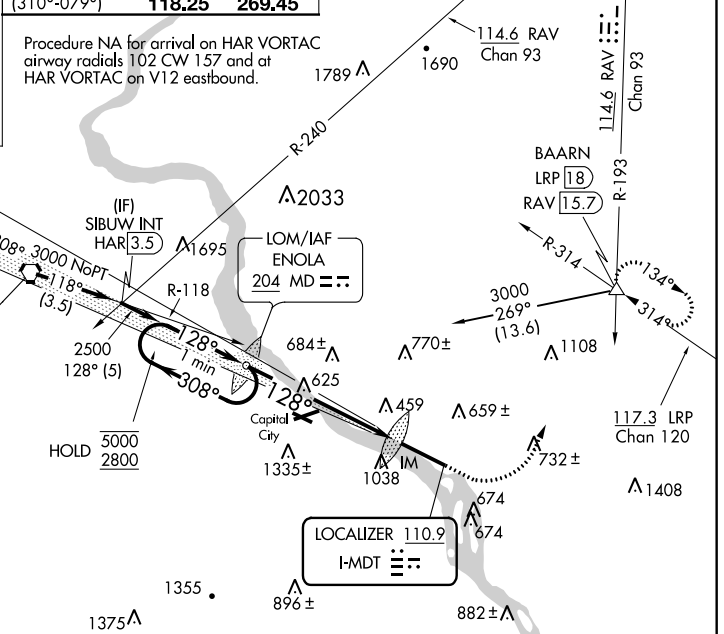
HARRISBURG INTL (MDT)

<p>Circle NA south of Rwy 13-31. -17°C</p>		<p>MISSED APPROACH: Climb to 900 then climbing left turn to 3000 on heading 060° and RAV VORTAC R-193 to BAARN INT/LRP 18 DME and hold.</p>
--	--	---

<p>ATIS <b>118.8</b></p>	<p>HARRISBURG APP CON</p> <table border="1"> <tr> <td>(080°-179°)</td> <td><b>126.45</b></td> <td><b>281.525</b></td> </tr> <tr> <td>(180°-309°)</td> <td><b>124.1</b></td> <td><b>273.525</b></td> </tr> <tr> <td>(310°-079°)</td> <td><b>118.25</b></td> <td><b>269.45</b></td> </tr> </table>	(080°-179°)	<b>126.45</b>	<b>281.525</b>	(180°-309°)	<b>124.1</b>	<b>273.525</b>	(310°-079°)	<b>118.25</b>	<b>269.45</b>	<p>HARRISBURG INTL TOWER <b>124.8 269.35</b></p>	<p>GND CON <b>121.7 348.6</b></p>
(080°-179°)	<b>126.45</b>	<b>281.525</b>										
(180°-309°)	<b>124.1</b>	<b>273.525</b>										
(310°-079°)	<b>118.25</b>	<b>269.45</b>										

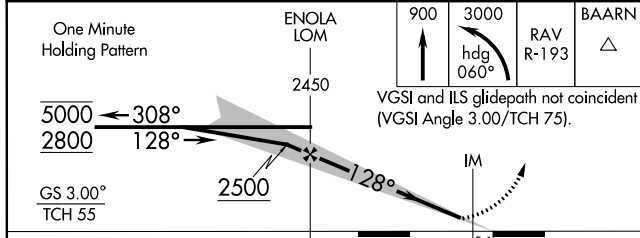
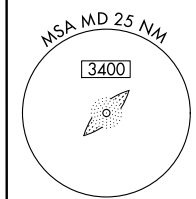
ALTERNATE MISSED APCH FIX

HARRISBURG HAR 115.35 Chan 100 (Y)

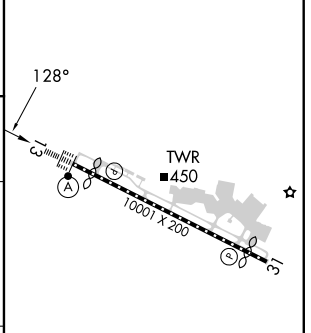


NE-4, 22 FEB 2024 to 21 MAR 2024

NE-4, 22 FEB 2024 to 21 MAR 2024



ELEV 310	<b>D</b>	TDZE 308
----------	----------	----------



CATEGORY	A	B	C	D
S-ILS 13		508/18	200 (200-½)	
S-LOC 13	900/24	592 (600-½)	900-1¼	592 (600-1¼)
CIRCLING	900-1 590 (600-1)	980-1 670 (700-1)	1000-2 690 (700-2)	1440-3 1130 (1200-3)

TDZ/CL Rwy 13					
REIL Rwy 31					
HIRL Rwy 13-31					
FAF to MAP 6.4 NM					
Knots	60	90	120	150	180
Min:Sec	6:24	4:16	3:12	2:34	2:08

LOC I-HQA <b>110.9</b>	APP CRS <b>308°</b>	Rwy Idg <b>8129</b>
		TDZE <b>308</b>
		Apt Elev <b>310</b>

# ILS or LOC RWY 31

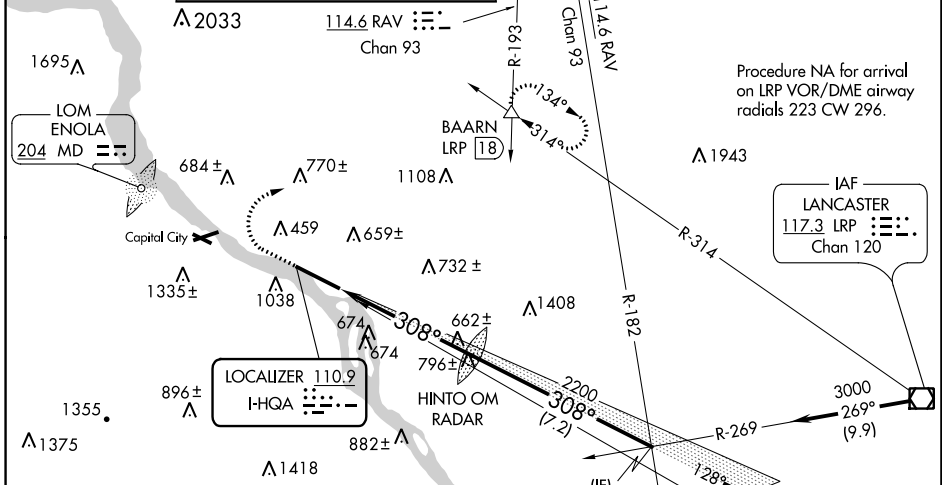
HARRISBURG INTL (MDT)

**⚠** Circling NA south of Rwy 13-31.

**⚠** -17°C

MISSED APPROACH: Climb to 800 then climbing right turn to 3000 on heading 090° and RAV VORTAC R-193 to BAARN INT/LRP 18 DME and hold.

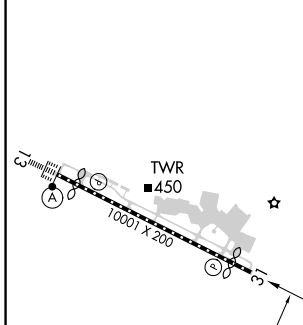
ATIS <b>118.8</b>	HARRISBURG APP CON (080°-179°) <b>126.45 281.525</b> (180°-309°) <b>124.1 273.525</b> (310°-079°) <b>118.25 269.45</b>	HARRISBURG INTL TOWER <b>124.8 269.35</b>	GND CON <b>121.7 348.6</b>
----------------------	---	--	-------------------------------



ALTERNATE MISSED APCH FIX

ENOLA 204 MD

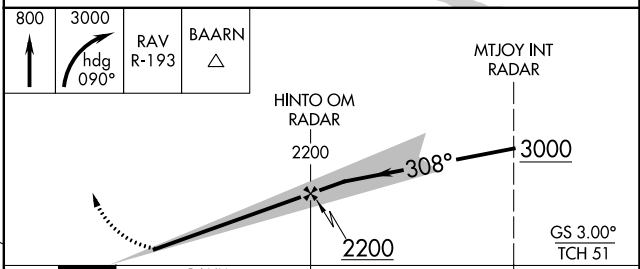
ELEV 310	<b>D</b>	TDZE 308
----------	----------	----------



TDZ/CL Rwy 13  
REIL Rwy 31  
HIRL Rwy 13-31

FAF to MAP 5.6 NM

Knots	60	90	120	150	180
Min:Sec	5:36	3:44	2:48	2:14	1:52



CATEGORY	A	B	C	D
S-ILS 31	558/50		250 (300-1)	
S-LOC 31	920/50	612 (700-1)	920-1 3/4 612 (700-1 3/4)	920-2 612 (700-2)
CIRCLING	920-1 610 (700-1)	980-1 670 (700-1)	1000-2 690 (700-2)	1440-3 1130 (1200-3)

NE-4, 22 FEB 2024 to 21 MAR 2024

NE-4, 22 FEB 2024 to 21 MAR 2024

WAAS CH <b>86313</b> <b>W13A</b>	APP CRS <b>128°</b>	Rwy Idg TDZE Apt Elev	<b>8070</b> <b>308</b> <b>310</b>
--	------------------------	-----------------------------	---

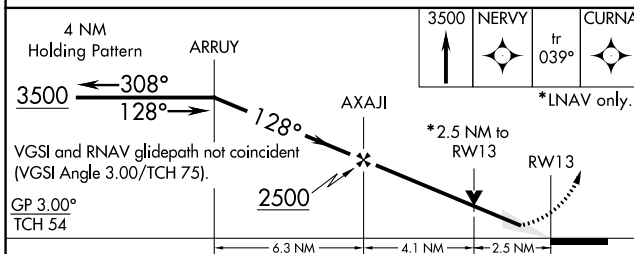
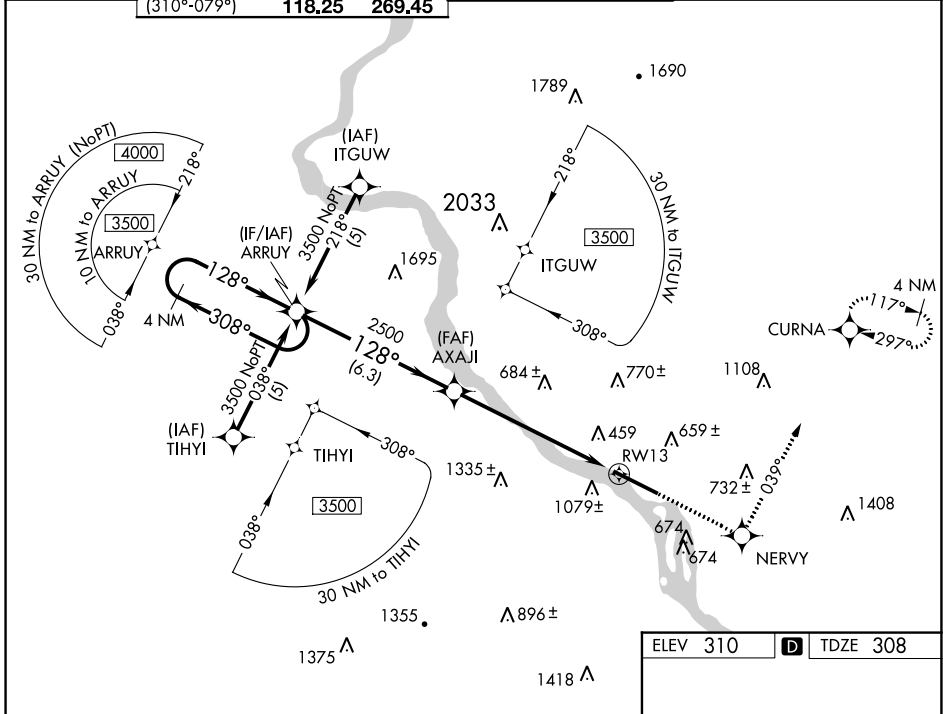
# RNAV (GPS) RWY 13

HARRISBURG INTL (MDT)

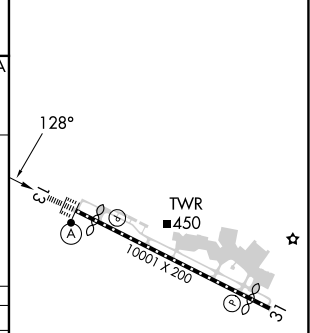
**⚠** Circling NA south of Rwy 13-31. For uncompensated Baro-VNAV systems, LNAV/VNAV NA below -1.5°C (5°F) or above 48°C (118°F). DME/DME RNP-0.3 NA. Inop table does not apply to LNAV/VNAV all Cats.

**ALSF-2**  
**(A)** MISSED APPROACH: Climb to 3500 direct NERVY and via track 039° to CURNA and hold, continue climb-in-hold to 3500.

ATIS <b>118.8</b>	HARRISBURG APP CON (080°-179°) <b>126.45 281.525</b> (180°-309°) <b>124.1 273.525</b> (310°-079°) <b>118.25 269.45</b>	HARRISBURG INTL TOWER <b>124.8 269.35</b>	GND CON <b>121.7 348.6</b>
----------------------	---	--	-------------------------------



ELEV 310	<b>D</b> TDZE 308
----------	-------------------



CATEGORY	A	B	C	D
LPV DA		558/24	250 (300-1/2)	
LNAV/VNAV DA		1572-5	1264 (1300-5)	
LNAV MDA	1180/24 872 (900-1/2)	1180/40 872 (900-3/4)	1180-2 872 (900-2)	1180-2 1/4 872 (900-2 1/4)
CIRCLING	1180-1 870 (900-1)	1180-1 1/4 870 (900-1 1/4)	1180-2 1/2 870 (900-2 1/2)	1440-3 1130 (1200-3)

TDZ/CL Rwy 13  
REIL Rwy 31  
HIRL Rwy 13-31

NE-4, 22 FEB 2024 to 21 MAR 2024

NE-4, 22 FEB 2024 to 21 MAR 2024

WAAS CH <b>78013</b> <b>W31A</b>	APP CRS <b>308°</b>	Rwy Idg <b>8129</b> TDZE <b>308</b> Apt Elev <b>310</b>
--	------------------------	---

# RNAV (GPS) RWY 31

HARRISBURG INTL (MDT)

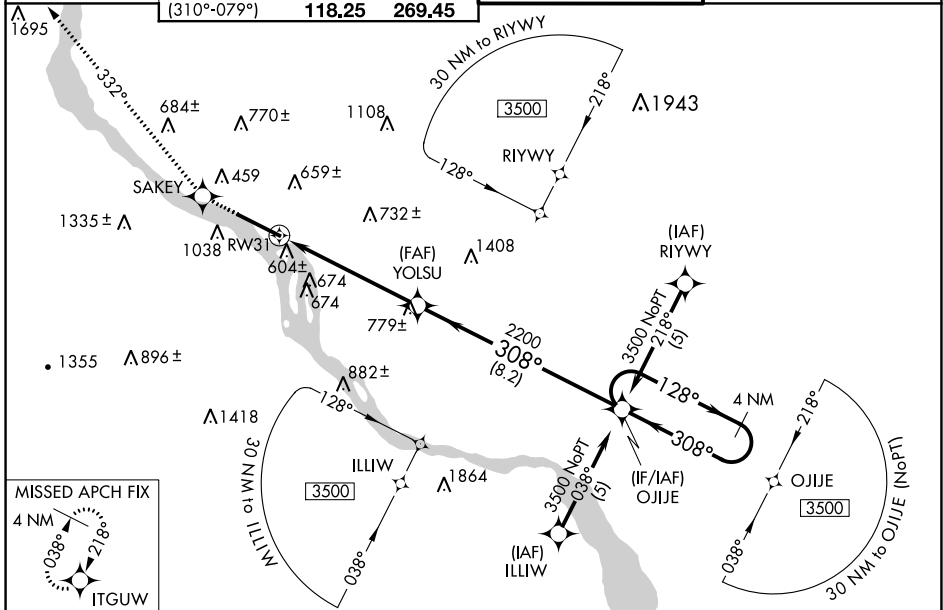
RNP APCH - GPS.

**⚠** Circling NA south of Rwy 13-31. For uncompensated Baro-VNAV systems, LNAV/VNAV NA below -15°C or above 48°C.

**❄** -17°C

MISSED APPROACH: Climb to 3500 direct SAKEY and on track 332° to ITGUW and hold.

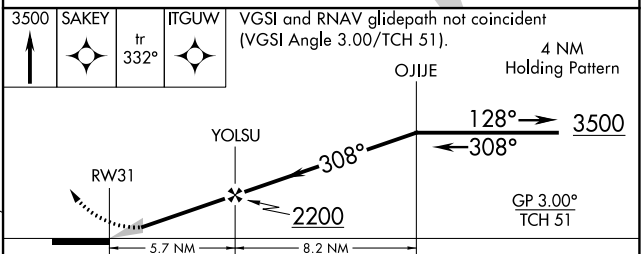
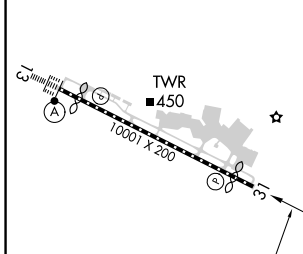
ATIS <b>118.8</b>	HARRISBURG APP CON (080°-179°) <b>126.45 281.525</b> (180°-309°) <b>124.1 273.525</b> (310°-079°) <b>118.25 269.45</b>	HARRISBURG INTL TOWER <b>124.8 269.35</b>	GND CON <b>121.7 348.6</b>
----------------------	---	--	-------------------------------



NE-4, 22 FEB 2024 to 21 MAR 2024

NE-4, 22 FEB 2024 to 21 MAR 2024

ELEV 310	<b>D</b>	TDZE 308
----------	----------	----------



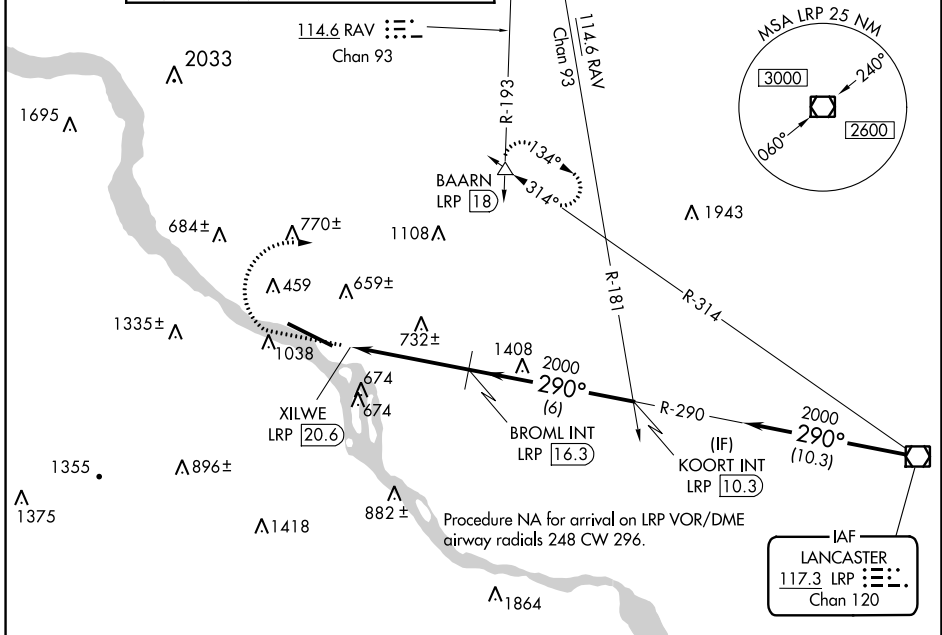
3500 SAKEY	tr 332°	ITGUW	VGSI and RNAV glidepath not coincident (VGSI Angle 3.00/TCH 51).	
			4 NM Holding Pattern	
			OJJE	
			128° → 3500	
			← 308°	
			GP 3.00° TCH 51	
CATEGORY	A	B	C	D
LPV DA		558/50	250 (300-1)	
LNAV/VNAV DA		921-2¼	613 (700-2¼)	
LNAV MDA	1100/55 792 (800-1)	1100/60 792 (800-1¼)	1100-2¼ 792 (800-2¼)	1100-2½ 792 (800-2½)
CIRCLING	1100-1 790 (800-1)	1100-1¼ 790 (800-1¼)	1100-2¼ 790 (800-2¼)	1440-3 1130 (1200-3)

VOR/DME LRP <b>117.3</b> Chan <b>120</b>	APP CRS <b>290°</b>	Rwy Idg TDZE <b>308</b> Apt Elev <b>310</b>
--	------------------------	---

# VOR RWY 31

HARRISBURG INTL (MDT)

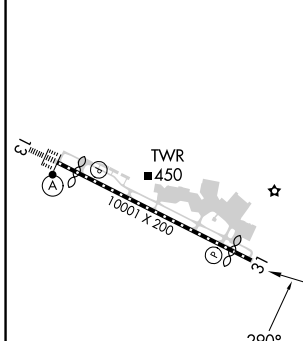
	Circling NA south of Rwy 13-31. Rwy 31 helicopter visibility reduction below $\frac{3}{4}$ SM NA.	MISSED APPROACH: Climb to 1500 then climbing right turn to 3000 on heading 090° and RAV VORTAC R-193 to BAARN INT/LRP 18 DME and hold.
	HARRISBURG APP CON (080°-179°) <b>126.45 281.525</b> (180°-309°) <b>124.1 273.525</b> (310°-079°) <b>118.25 269.45</b>	HARRISBURG INTL TOWER <b>124.8 269.35</b>



NE-4, 22 FEB 2024 to 21 MAR 2024

NE-4, 22 FEB 2024 to 21 MAR 2024

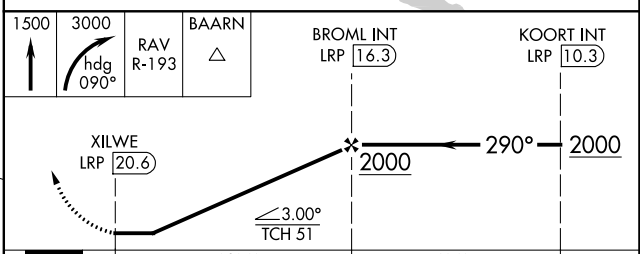
ELEV 310	<b>D</b>	TDZE 308
----------	----------	----------



TDZ/CL Rwy 13  
REL Rwy 31  
HIRL Rwy 13-31

FAF to MAP 4.3 NM

Knots	60	90	120	150	180
Min:Sec	4:18	2:52	2:09	1:43	1:26



CATEGORY	A	B	C	D
S-31	1260-1¼ 952 (1000-1¼)	1260-1½ 952 (1000-1½)	1260-3	952 (1000-3)
CIRCLING	1260-1¼ 950 (1000-1¼)	1260-1½ 950 (1000-1½)	1260-3 950 (1000-3)	1440-3 1130 (1200-3)

# VOR RWY 31