

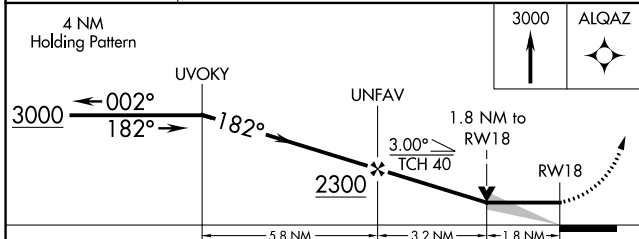
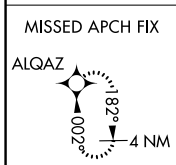
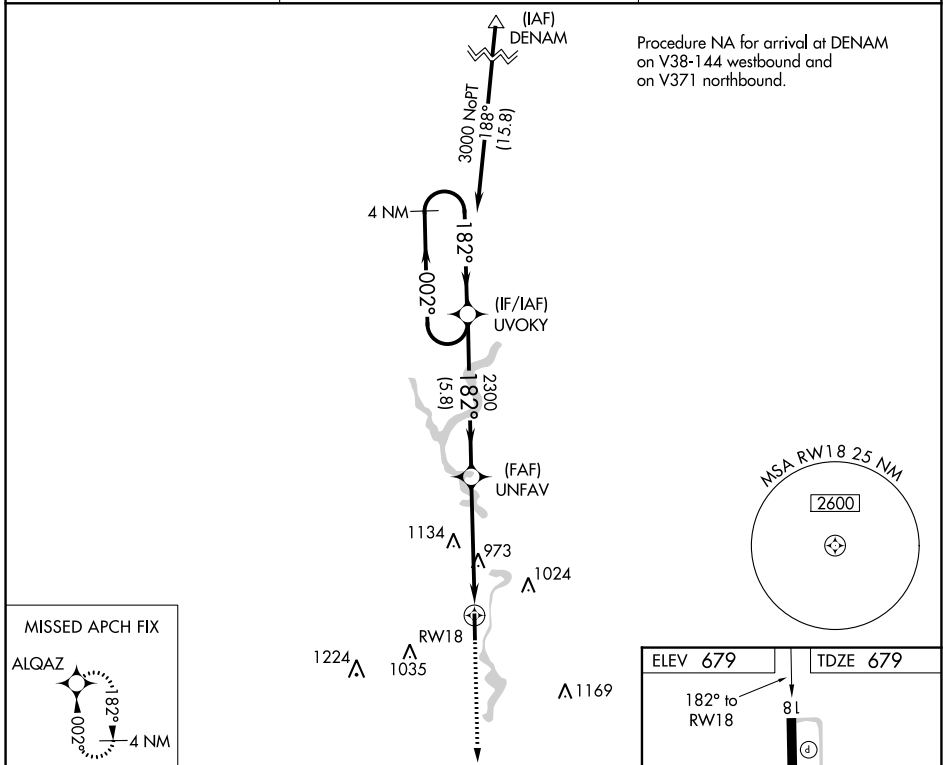
WAAS CH 70728 W18A	APP CRS 182°	Rwy Idg 5001 TDZE 679 Apt Elev 679
--	------------------------	---

RNAV (GPS) RWY 18

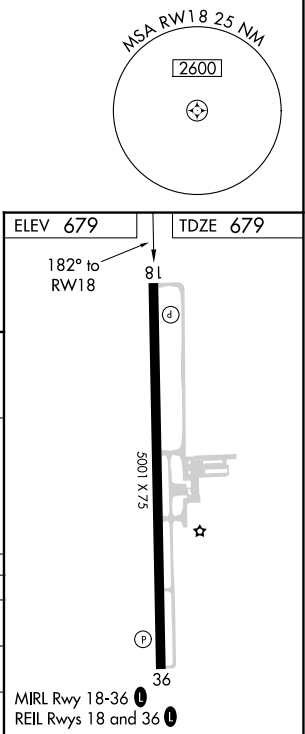
WHITE COUNTY (MCX)

▽ ▲	Circling Rwy 36 NA at night. DME/DME RNP-0.3 NA.	MISSED APPROACH: Climb to 3000 direct ALQAZ and hold.
----------------------	--	---

AWOS-3P 124.05	GRISSOM APP CON ★ 123.85 291.675	UNICOM 122.8 (CTAF) ①
--------------------------	--	--



CATEGORY	A	B	C	D
LP MDA	1280-1	601 (700-1)	1280-1¾	601 (700-1¾)
LNAV MDA	1440-1 761 (800-1)	1440-1¼ 761 (800-1¼)	1440-2½	761 (800-2½)
☐ CIRCLING	1440-1 761 (800-1)	1440-1¼ 761 (800-1¼)	1500-2½ 821 (900-2½)	1500-2¾ 821 (900-2¾)



EC-2, 11 AUG 2022 to 08 SEP 2022

EC-2, 11 AUG 2022 to 08 SEP 2022

APP CRS 002°	Rwy Idg 5001
	TDZE 673
	Apt Elev 679

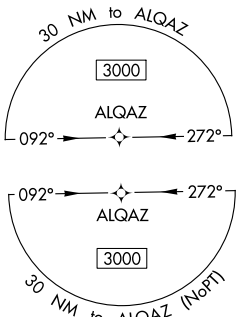
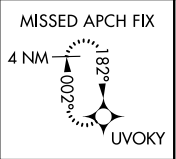
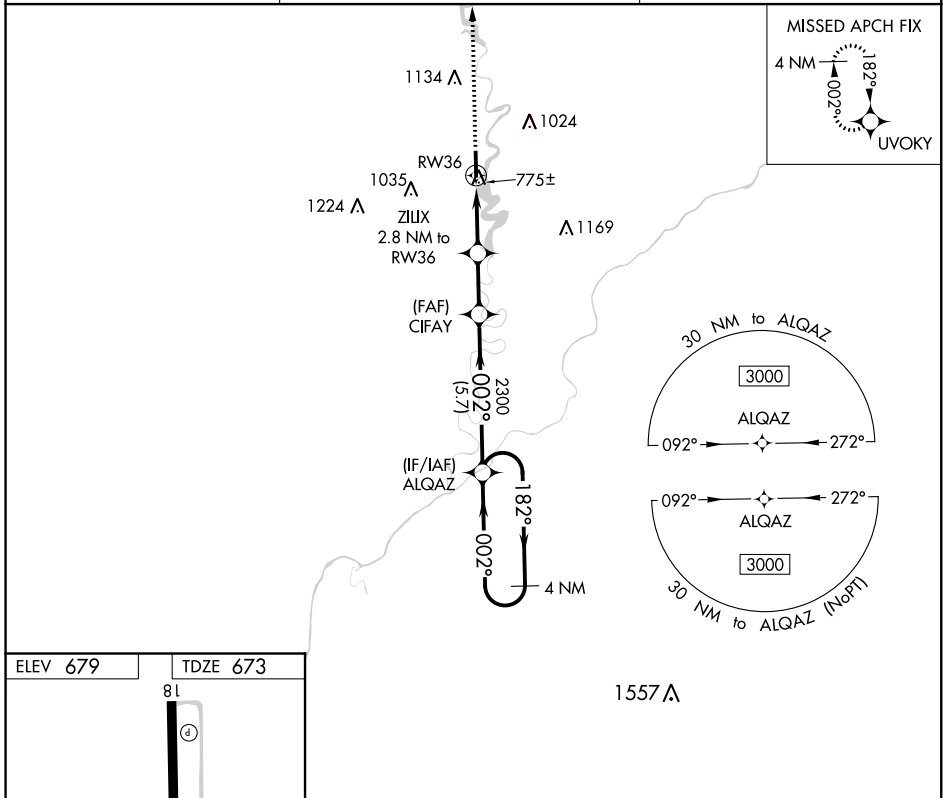
RNAV (GPS) RWY 36

WHITE COUNTY (MCX)

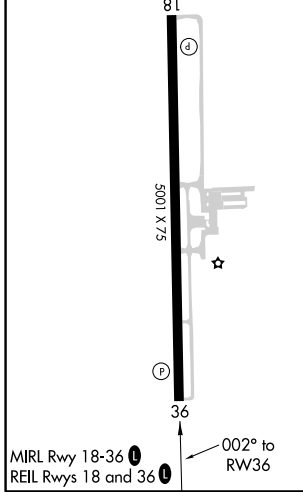
▽ DME/DME RNP-0.3 NA. Straight-in Rwy 36 NA at night, Circling Rwy 36 NA at night. Rwy 36 helicopter visibility reduction below 1 SM NA.

▲ MISSED APPROACH: Climb to 3000 direct UVOKY and hold.

AWOS-3P 124.05	GRISSOM APP CON ★ 123.85 291.675	UNICOM 122.8 (CTAF) 0
--------------------------	--	---------------------------------



ELEV 679	TDZE 673
----------	----------



3000	UVOKY	VGSJ and descent angles not coincident (VGSJ Angle 4.00/TCH 25).		4 NM Holding Pattern
		ZILIX 2.8 NM to RW36	CIFAY	ALQAZ
		RW36	1600	2300
		2.8 NM	2.2 NM	5.7 NM
CATEGORY	A	B	C	D
LNAV MDA	1040-1 367 (400-1)			
C CIRCLING	1200-1 521 (600-1)	1340-1 661 (700-1)	1500-2½ 821 (900-2½)	1500-2¾ 821 (900-2¾)

EC-2, 11 AUG 2022 to 08 SEP 2022

EC-2, 11 AUG 2022 to 08 SEP 2022