

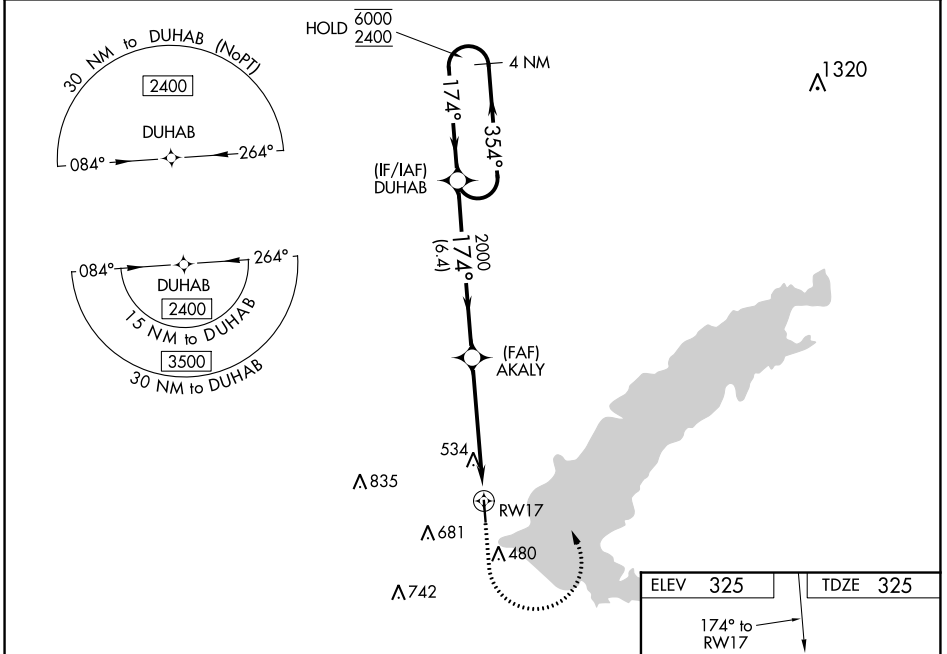
WAAS CH <b>69231</b> <b>W17A</b>	APP CRS <b>174°</b>	Rwy Idg <b>4444</b> TDZE <b>325</b> Apt Elev <b>325</b>
--	------------------------	---

# RNAV (GPS) RWY 17

BRUCE CAMPBELL FIELD (MBO)

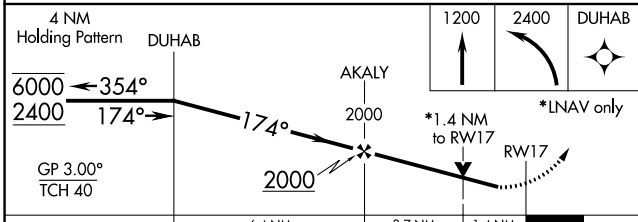
RNP APCH.	<p>▼ Baro-VNAV and VDP NA when using Jackson-Medgar Wiley Evers Intl altimeter setting.                  ▲ Rwy 17 helicopter visibility reduction below 3/4 SM NA. For uncompensated Baro-VNAV systems, LNAV/VNAV NA below -15°C or above 54°C. When local altimeter setting not received, use Jackson-Medgar Wiley Evers Intl altimeter setting and increase all DA 21 feet and all MDA 40 feet, and increase LNAV/VNAV visibility 1/8 SM, and Circling Cats C/D visibility 1/2 mile.</p>	MISSED APPROACH: Climb to 1200 then climbing left turn to 2400 direct DUHAB and hold.
-----------	--	---

AWOS-3PT <b>119.125</b>	JACKSON APP CON ★ <b>123.9 317.7</b>	CLNC DEL <b>125.9</b>	UNICOM <b>122.8 (CTAF) 0</b>
----------------------------	---	--------------------------	---------------------------------



SC-4, 25 FEB 2021 to 25 MAR 2021

SC-4, 25 FEB 2021 to 25 MAR 2021



ELEV 325	TDZE 325
----------	----------

MIRL Rwy 17-35 0

CATEGORY	A	B	C	D
LPV DA	600-7/8 275 (300-7/8)			
LNAV/VNAV DA	832-1 3/8 507 (600-1 1/8)			
LNAV MDA	800-1 475 (500-1)		800-1 3/8 475 (500-1 3/8)	
CIRCLING	820-1 495 (500-1)	840-1 515 (600-1)	1040-2 715 (800-2)	1040-2 1/4 715 (800-2 1/4)

WAAS CH <b>72631</b> <b>W35A</b>	APP CRS <b>354°</b>	Rwy Idg <b>4444</b> TDZE <b>324</b> Apt Elev <b>325</b>
--	------------------------	---

# RNAV (GPS) RWY 35

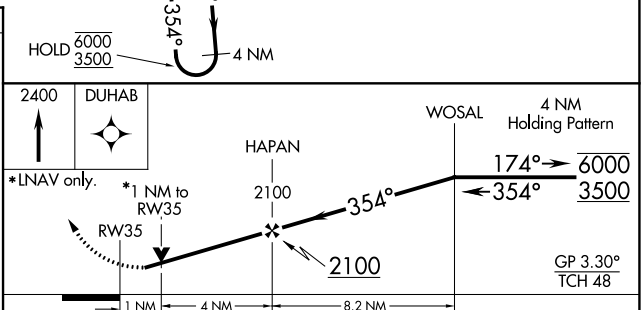
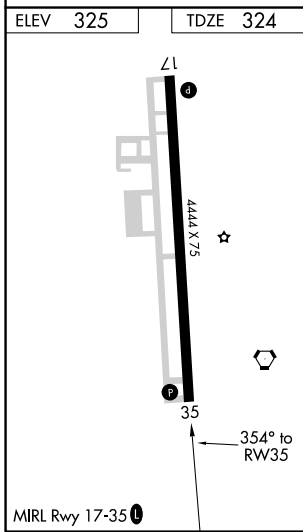
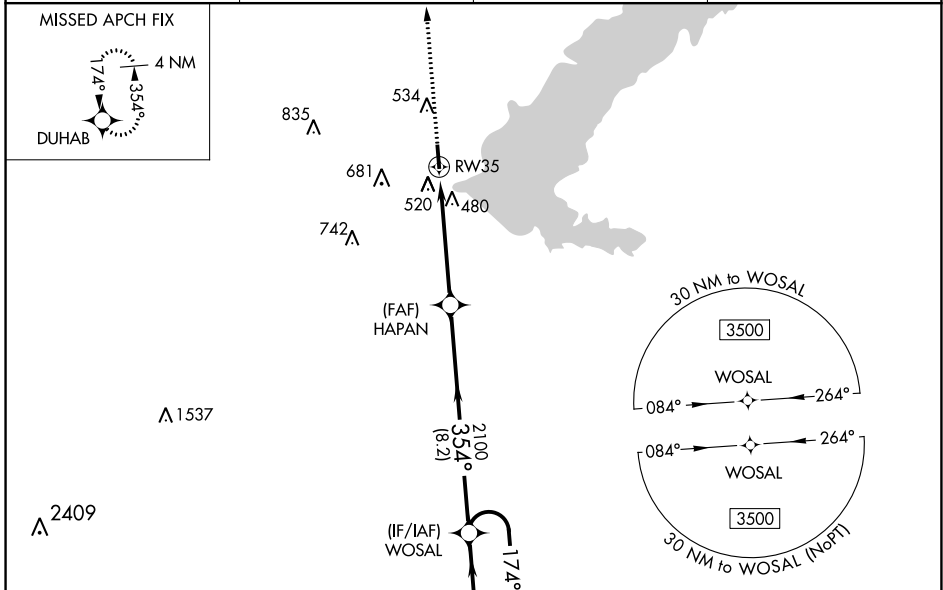
BRUCE CAMPBELL FIELD (MBO)

RNP APCH.

Baro-VNAV and VDP NA when using Jackson-Medgar Wiley Evers Intl altimeter setting.  
 Rwy 35 helicopter visibility reduction below 3/4 SM NA. For uncompensated Baro-VNAV systems, LNAV/VNAV NA below -15°C or above 54°C. When local altimeter setting not received, use Jackson-Medgar Wiley Evers Intl altimeter setting and increase all DA 21 feet and visibility 1/8 SM, increase all MDA 40 feet and Circling Cat C/D visibility 1/4 SM.

MISSED APPROACH: Climb to 2400 direct DUHAB and hold.

AWOS-3PT <b>119.125</b>	JACKSON APP CON ★ <b>123.9 317.7</b>	CLNC DEL <b>125.9</b>	UNICOM <b>122.8 (CTAF) 0</b>
----------------------------	---	--------------------------	---------------------------------



CATEGORY	A	B	C	D
LPV DA		643-7/8	319 (400-7/8)	
LNAV/VNAV DA		750-1/4	426 (500-1/4)	
LNAV MDA	780-1	456 (500-1)	780-1 3/8	456 (500-1 3/8)
<b>C</b> CIRCLING	820-1 495 (500-1)	840-1 515 (600-1)	1040-2 715 (800-2)	1040-2 1/4 715 (800-2 1/4)

SC-4, 25 FEB 2021 to 25 MAR 2021

SC-4, 25 FEB 2021 to 25 MAR 2021

VORTAC MHZ <b>113.2</b> Chan <b>79</b>	APP CRS <b>167°</b>	Rwy Idg TDZE Apt Elev	<b>4444</b> <b>325</b> <b>325</b>
--	------------------------	-----------------------------	---

# VOR RWY 17

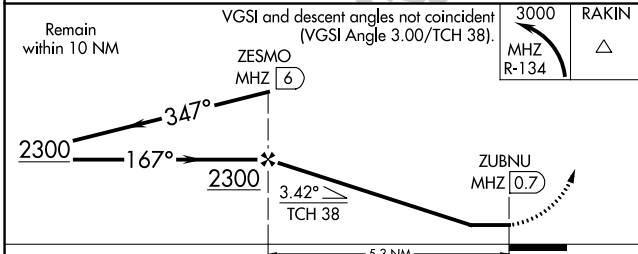
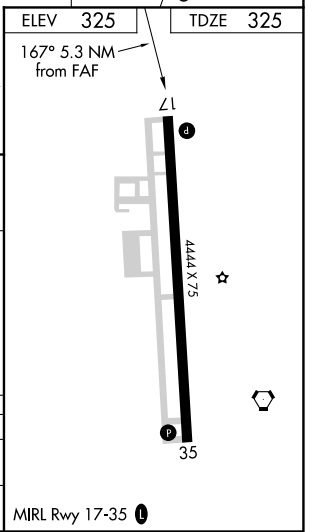
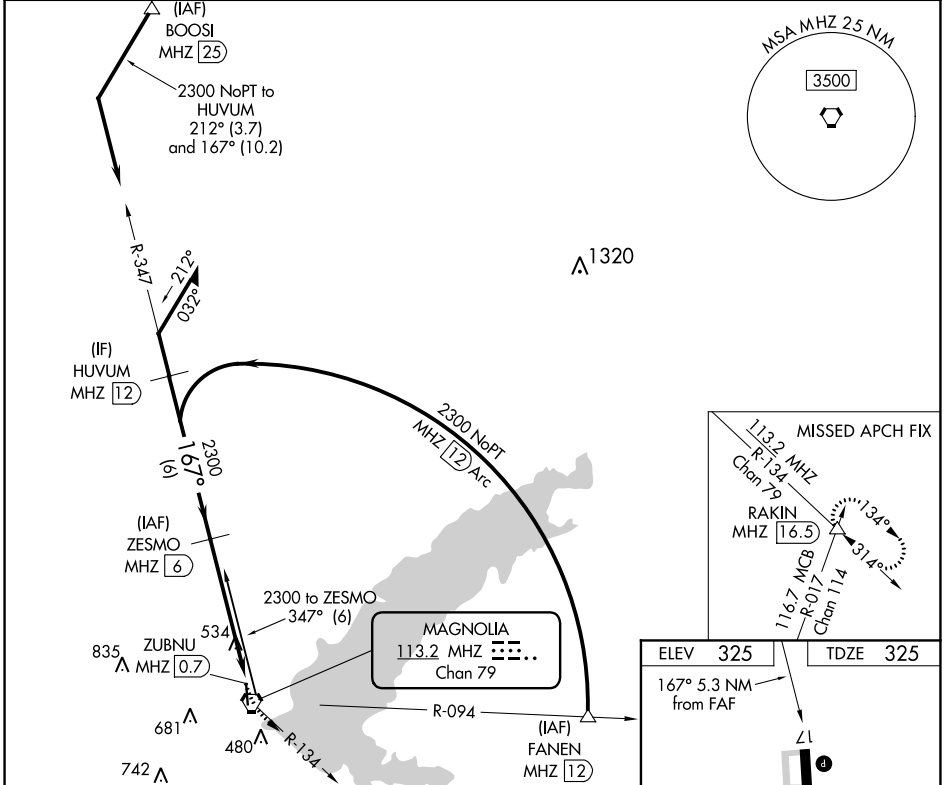
BRUCE CAMPBELL FIELD (MBO)

DME required.

**⚠** Rwy 17 helicopter visibility reduction below 1 SM NA. When local altimeter setting not received, use Jackson-Medgar Wiley Evers Intl altimeter setting and increase all MDA 40 feet, and Circling Cats C/D ¼ SM. Straight-in Rwy 17 NA at night, Circling Rwy 17 NA at night.

**MISSED APPROACH:** Climbing left turn to 3000 on MHZ VORTAC R-134 to RAKIN INT/MHZ 16.5 DME.

AWOS-3PT <b>119.125</b>	JACKSON APP CON ★ <b>123.9 317.7</b>	CLNC DEL <b>125.9</b>	UNICOM <b>122.8 (CTAF) 0</b>
----------------------------	---	--------------------------	---------------------------------



CATEGORY	A	B	C	D
S-17	800-1	475 (500-1)	800-1 3/8	475 (500-1 3/8)
<b>C</b> CIRCLING	820-1 495 (500-1)	840-1 515 (600-1)	1040-2 715 (800-2)	1040-2 1/4 715 (800-2 1/4)

SC-4, 25 FEB 2021 to 25 MAR 2021

SC-4, 25 FEB 2021 to 25 MAR 2021