

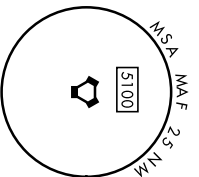
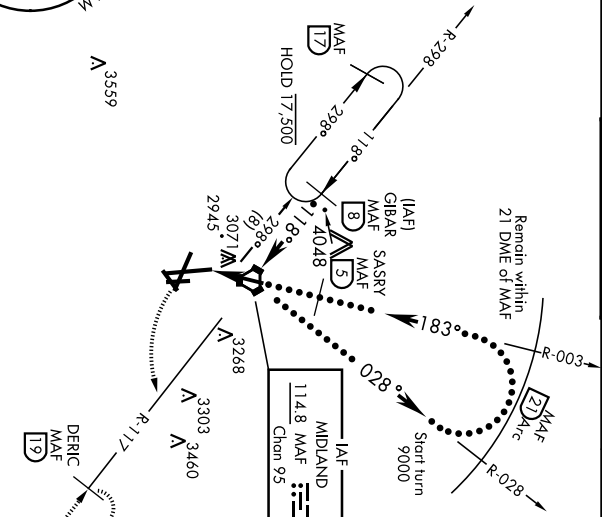
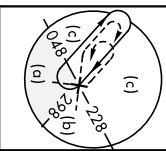
VORTAC MAF	APCH CRS	Rwy Idg	9501
114.8	183°	TDZE	2872
Chon 95		Arpt Elev	2872

AL-258 [USAF] MIDLAND INTL AIR AND SPACE PORT (KMAF)

▼ \* Circling Rwy 16L N/A at night.

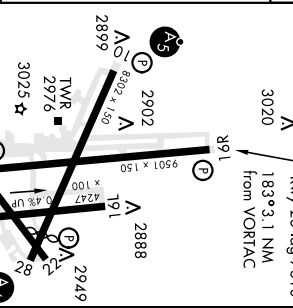
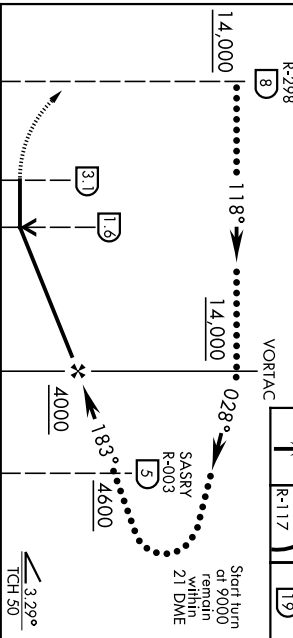
MISSED APPROACH: Climb to 3500 then climbing left turn to 4800 on MAF VORTAC R-117 to DERIC/MAF 19 DME and hold.

ATIS ★	APP CON	TOWER ★	GND CON	CINC DEL	UNICOM
126.8 235.975	124.6 290.4	118.7(CI/A) 273.45	121.9 348.6	118.05 317.65	122.95



EMERG SAFE ALT 100 NM 7000

ELEV	2872	IDZE	2872
DERIC MAF 19	4800	Rwy 10 Hdg 8177'	
MAF R-117	3500	Rwy 28 Hdg 7610'	
VORTAC	3020	183° x 3.1 NM	from VORTAC



CATEGORY	C	D	E
S-16R	3400-1½	528 (600-1½)	
CIRCLING *	3440-1½	3520-2	3600-2½
	568 (600-1½)	648 (700-2)	728 (800-2½)

HIRL Rwy 10-28, 16R-34L  
 MIRL Rwy 4-22, 16L-34R  
 REIL Rwy 34L

MIDLAND, TEXAS  
 31° 57' N-102° 12' W MIDLAND INTL AIR AND SPACE PORT (KMAF)  
 Arch 3 20JUL17

HI-VOR or TACAN Rwy 16R



LOC/DME I-MAF <b>110.3</b> Chan <b>40</b>	APP CRS <b>105°</b>	Rwy Idg TDZE Apt Elev	<b>8177</b> <b>2869</b> <b>2872</b>
---	------------------------	-----------------------------	---

# ILS or LOC RWY 10

MIDLAND INTL AIR AND SPACE PORT (MAF)

**⚠** Circling Rwy 16L NA at night. For inop ALS, increase S-ILS 10 Cat E visibility to RVR 4000, S-LOC 10 Cat E visibility to 1½ SM. USILE fix minimums increase S-LOC 10 Cat E visibility to 1½ SM. \*\* RVR 1800 authorized with use of FD or AP or HUD to DA.

**MALSR**  
MISSED APPROACH: Climb to 4900 on heading 105° and on MAF VORTAC R-117 to DERIC INT/MAF 19 DME and hold.

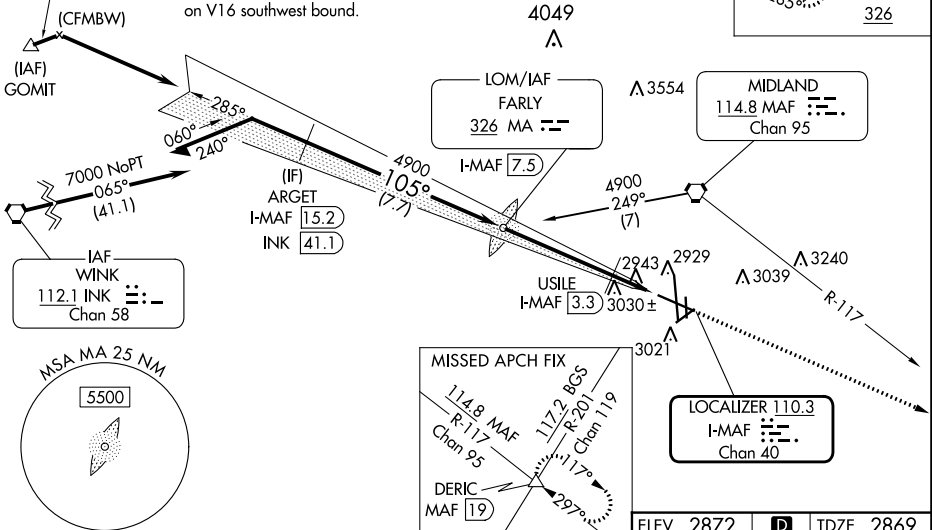
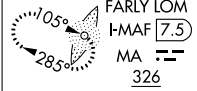
ATIS <b>126.8 235.975</b>	MIDLAND APP CON* <b>124.6 290.4</b>	MIDLAND TOWER* <b>118.7 (CTAF) 0 273.45</b>	GND CON <b>121.9 348.6</b>	CLNC DEL <b>118.05 317.65</b>	UNICOM <b>122.95</b>
------------------------------	--	--	-------------------------------	----------------------------------	-------------------------

## ADF OR DME REQUIRED

4900 NoPT to ARGET  
060° (1.1)  
and LOC (9.6)

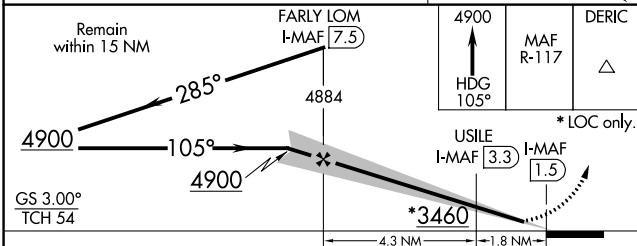
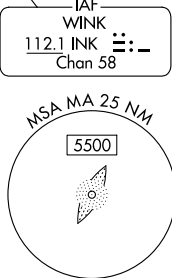
Procedure NA for arrivals at GOMIT on V16 southwest bound.

ALTERNATE MISSED APCH FIX

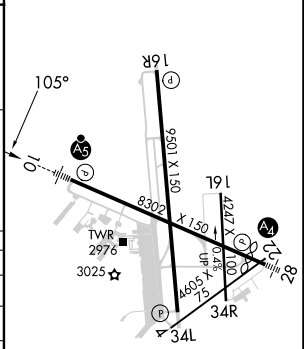


SC-3, 22 FEB 2024 to 21 MAR 2024

SC-3, 22 FEB 2024 to 21 MAR 2024



ELEV 2872	<b>D</b>	TDZE 2869
-----------	----------	-----------



CATEGORY	A	B	C	D	E
S-ILS 10 **	3069/24 200 (200-½)				
S-LOC 10	3460/24	591 (600-½)	3460-1¼	591 (600-1¼)	
CIRCLING	3460-1	588 (600-1)	3460-1¾ 588 (600-1¾)	3520-2 648 (700-2)	3600-2½ 728 (800-2½)
USILE FIX MINIMUMS					
S-LOC 10	3420/24	551 (600-½)	3420/60	551 (600-1¼)	
CIRCLING	3440-1	568 (600-1)	3440-1⅝ 568 (600-1⅝)	3520-2 648 (700-2)	3600-2½ 728 (800-2½)

REL Rwy 34L					
MIRL Rwys 4-22 and 16L-34R					
HIRL Rwys 10-28 and 16R-34L					
FAF to MAP 6.1 NM					
Knots	60	90	120	150	180
Min:Sec	6:06	4:04	3:03	2:26	2:02



WAAS CH <b>61329</b> <b>W16A</b>	APP CRS <b>166°</b>	Rwy Idg TDZE Apt Elev	<b>9501</b> <b>2872</b> <b>2872</b>
--	------------------------	-----------------------------	---

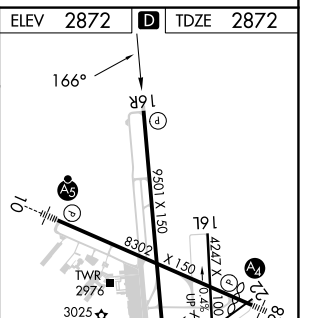
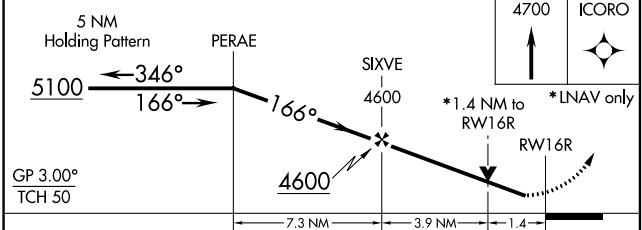
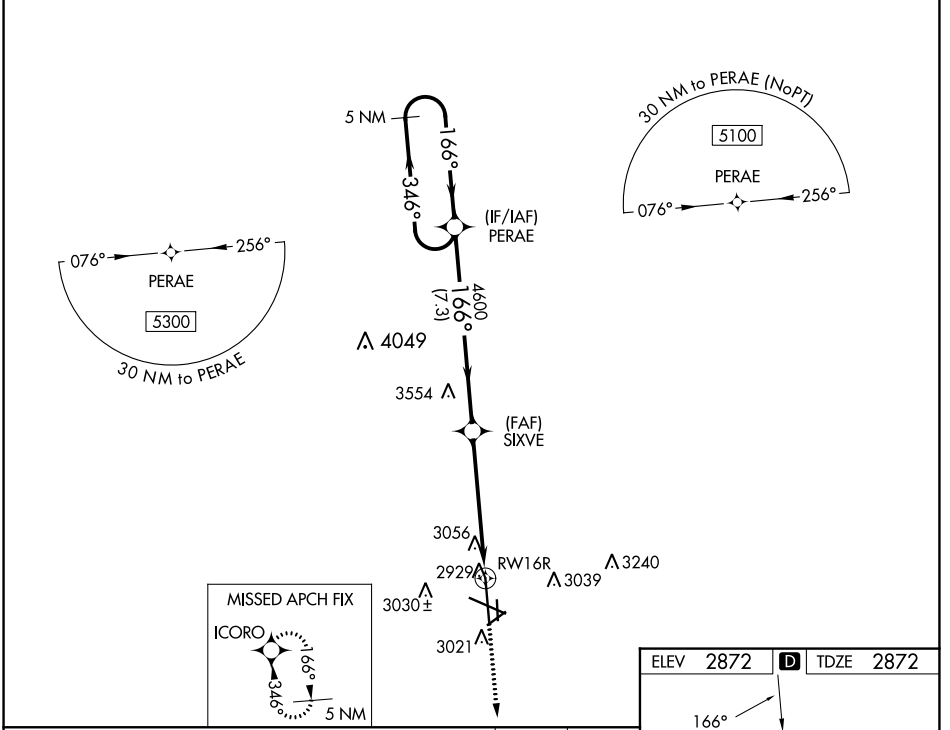
# RNAV (GPS) RWY 16R

MIDLAND INTL AIR AND SPACE PORT (M.A.F.)

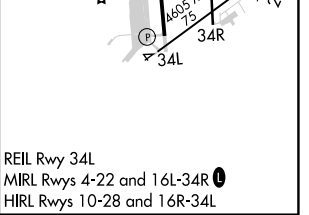
**⚠** For uncompensated Baro-VNAV systems, LNAV/VNAV NA below -11°C (13°F) or above 25°C (77°F). Rwy 16R helicopter visibility reduction below ¾ SM NA. DME/DME RNP-0.3 NA. Circling Rwy 16L NA at night.

MISSED APPROACH: Climb to 4700 direct ICORO and hold.

ATIS <b>126.8 235.975</b>	MIDLAND APP CON* <b>124.6 290.4</b>	MIDLAND TOWER* <b>118.7 (CTAF) 0273.45</b>	GND CON <b>121.9 348.6</b>	CLNC DEL <b>118.05 317.65</b>	UNICOM <b>122.95</b>
------------------------------	--	---	-------------------------------	----------------------------------	-------------------------



CATEGORY	A	B	C	D
LPV DA		3072-¾	200 (200-¾)	
LNAV/VNAV DA		3398-1¾	526 (600-1¾)	
LNAV MDA	3360-1	488 (500-1)	3360-1¾	488 (500-1¾)
CIRCLING	3440-1	568 (600-1)	3440-1½	3520-2
			568 (600-1½)	648 (700-2)



SC-3, 22 FEB 2024 to 21 MAR 2024

SC-3, 22 FEB 2024 to 21 MAR 2024



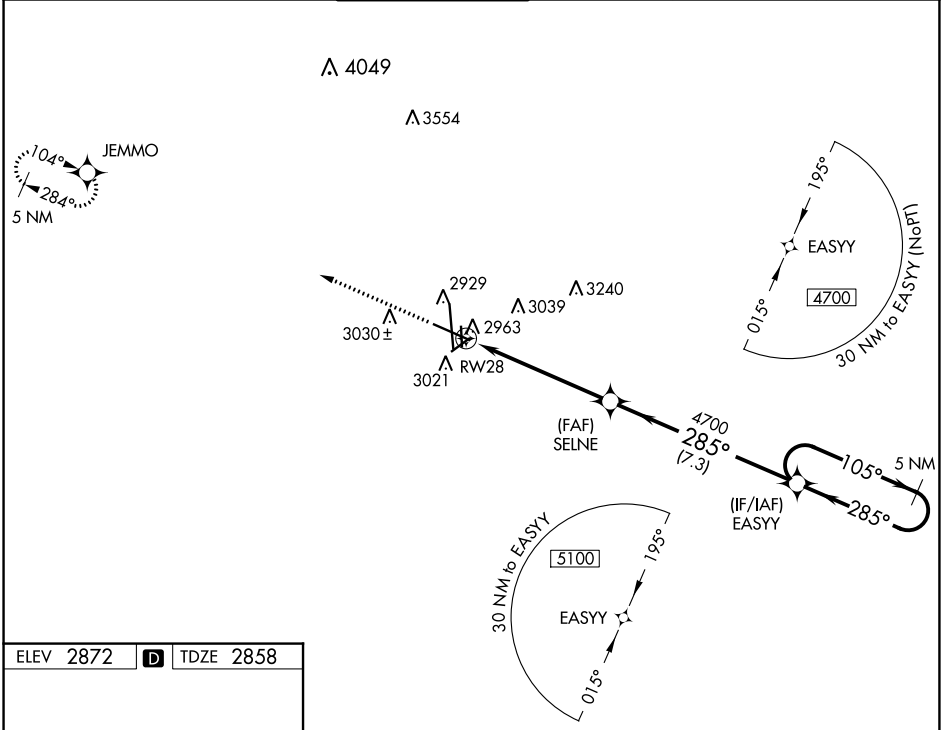
WAAS CH <b>81816</b> <b>W28A</b>	APP CRS <b>285°</b>	Rwy Idg TDZE Apt Elev	<b>7610</b> <b>2858</b> <b>2872</b>
--	------------------------	-----------------------------	---

# RNAV (GPS) RWY 28

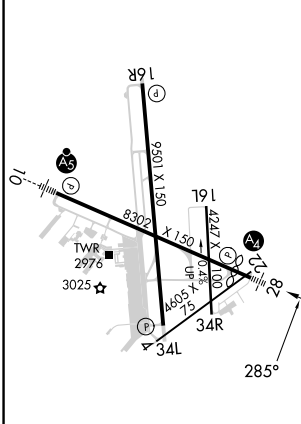
MIDLAND INTL AIR AND SPACE PORT (M.A.F)

<p>For uncompensated Baro-VNAV systems, LNAV/VNAV NA below -11°C (13°F) or above 25°C (77°F). Circling Rwy 16L NA at night. DME/DME RNP-0.3 NA. Inop table does not apply to LPV all Cats.</p>		<p>MALS</p>	<p>MISSED APPROACH: Climb to 5000 direct JEMMO and hold.</p>
--	--	-------------	--

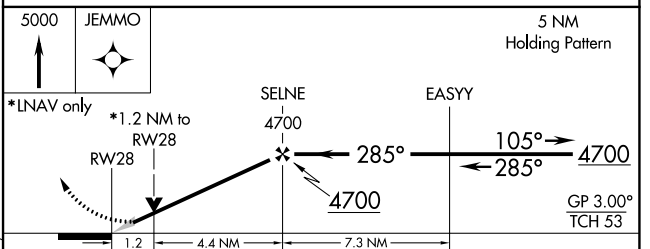
ATIS <b>126.8 235.975</b>	MIDLAND APP CON * <b>124.6 290.4</b>	MIDLAND TOWER * <b>118.7 (CTAF) 0273.45</b>	GND CON <b>121.9 348.6</b>	CLNC DEL <b>118.05 317.65</b>	UNICOM <b>122.95</b>
------------------------------	---	--	-------------------------------	----------------------------------	-------------------------



ELEV 2872	<b>D</b>	TDZE 2858
-----------	----------	-----------



REIL Rwy 34L  
MIRL Rwy 4-22 and 16L-34R  
HIRL Rwy 10-28 and 16R-34L



CATEGORY	A	B	C	D
LPV DA		3058-¾	200 (200-¾)	
LNAV/VNAV DA		3271-1½	413 (500-1½)	
LNAV MDA	3280-¾	422 (500-¾)	3280-1	422 (500-1)
CIRCLING	3440-1	568 (600-1)	3440-1½ 568 (600-1½)	3520-2 648 (700-2)

SC-3, 22 FEB 2024 to 21 MAR 2024

SC-3, 22 FEB 2024 to 21 MAR 2024

MIDLAND, TEXAS

AL-258 (FAA)

23334

WAAS CH <b>66029</b> <b>W34A</b>	APP CRS <b>346°</b>	Rwy Idg TDZE Apt Elev	<b>9501</b> <b>2858</b> <b>2872</b>
--	------------------------	-----------------------------	---

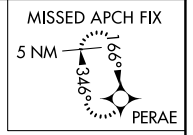
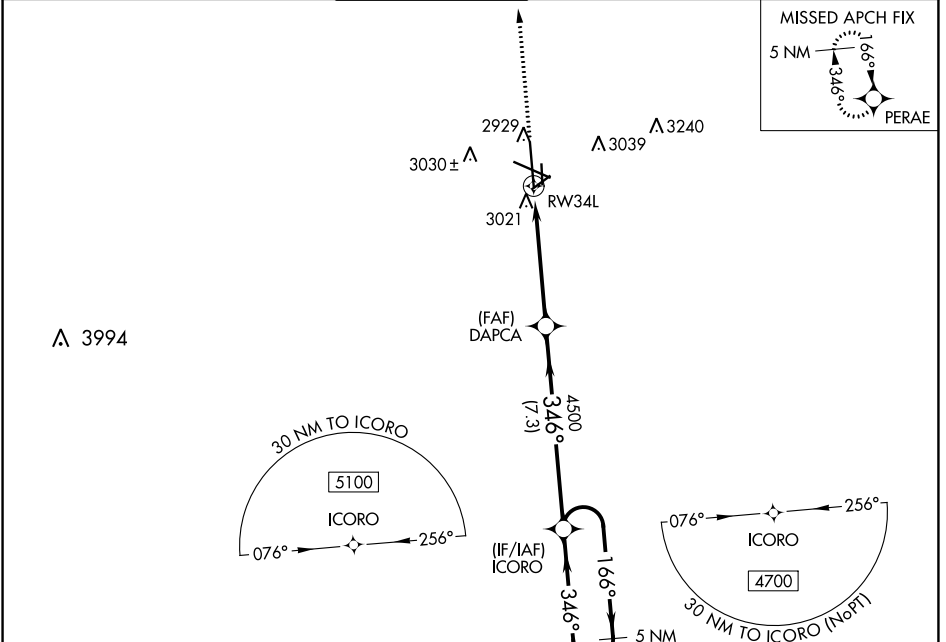
# RNAV (GPS) RWY 34L

MIDLAND INTL AIR AND SPACE PORT (M.I.A.F.)

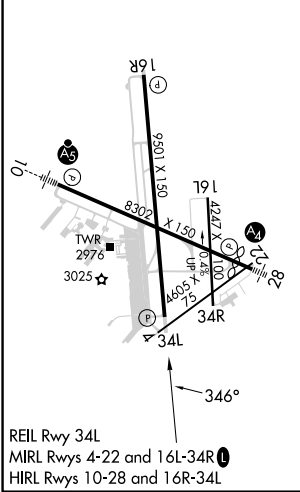
**V** For uncompensated Baro-VNAV systems, LNAV/VNAV NA below -11°C (13°F) or above 26°C (78°F). Circling Rwy 16L NA at night. DME/DME RNP-0.3 NA.

MISSED APPROACH: Climb to 5100 direct PERAE and hold.

ATIS <b>126.8 235.975</b>	MIDLAND APP CON* <b>124.6 290.4</b>	MIDLAND TOWER* <b>118.7(CTAF) 0273.45</b>	GND CON <b>121.9 348.6</b>	CLNC DEL <b>118.05 317.65</b>	UNICOM <b>122.95</b>
------------------------------	--	--	-------------------------------	----------------------------------	-------------------------



ELEV	2872	<b>D</b>	TDZE	2858
------	------	----------	------	------





WAAS CH <b>90529</b> <b>W04A</b>	APP CRS <b>045°</b>	Rwy Idg TDZE Apt Elev	<b>4605</b> <b>2851</b> <b>2872</b>
--	------------------------	-----------------------------	---

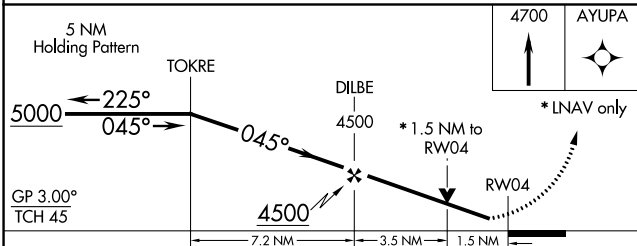
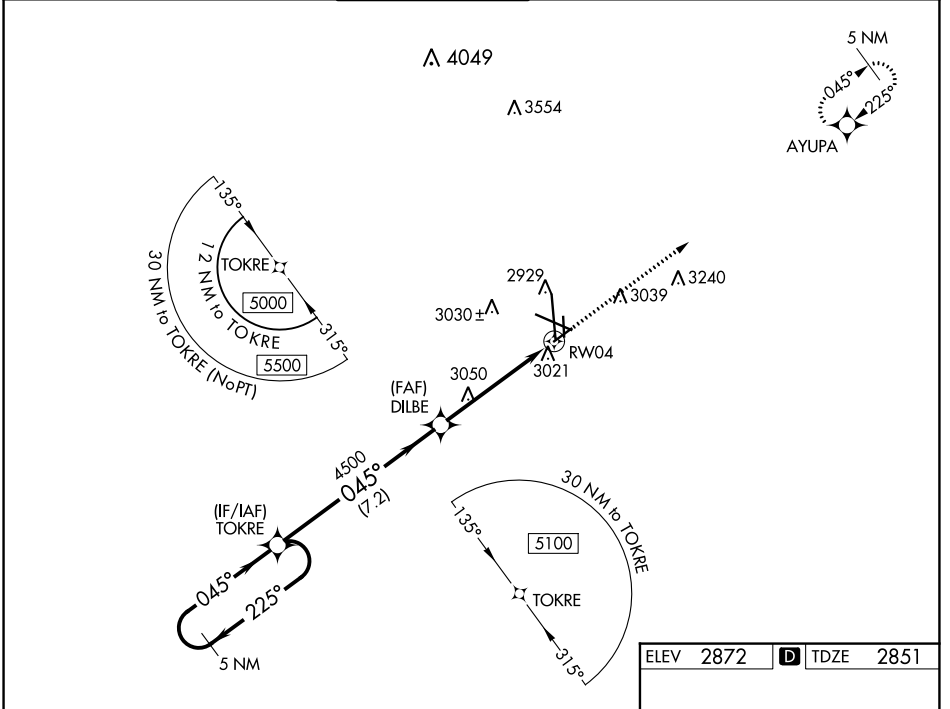
# RNAV (GPS) RWY 4

MIDLAND INTL AIR AND SPACE PORT (M.A.F.)

▼ For uncompensated Baro-VNAV systems, LNAV/VNAV NA below -11°C (13°F) or above 25°C (77°F). Circling Rwy 16L NA at night. Rwy 4 helicopter visibility reduction below ¾ SM NA. DME/DME RNP-0.3 NA.

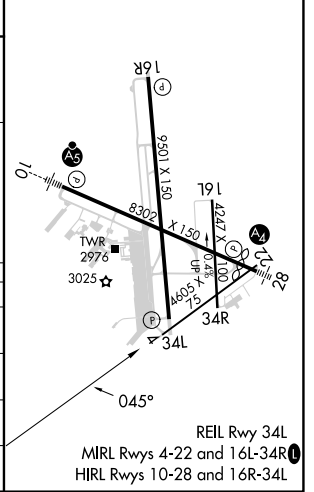
MISSED APPROACH: Climb to 4700 direct AYUPA and hold.

ATIS <b>126.8 235.975</b>	MIDLAND APP CON* <b>124.6 290.4</b>	MIDLAND TOWER* <b>118.7 (CTAF) 273.45</b>	GND CON <b>121.9 348.6</b>	CLNC DEL <b>118.05 317.65</b>	UNICOM <b>122.95</b>
------------------------------	--	--	-------------------------------	----------------------------------	-------------------------



ELEV 2872	D TDZE 2851
-----------	-------------

CATEGORY	A	B	C	D
LPV DA		3051-¾	200 (200-¾)	
LNAV/VNAV DA		3283-1½	432 (500-1½)	
LNAV MDA	3360-1	509 (500-1)	3360-1¾	509 (500-1¾)
CIRCLING	3440-1	568 (600-1)	3440-1½	3520-2
			568 (600-1½)	648 (700-2)



SC-3, 22 FEB 2024 to 21 MAR 2024

SC-3, 22 FEB 2024 to 21 MAR 2024

VORTAC MAF <b>114.8</b> Chan <b>95</b>	APP CRS <b>183°</b>	Rwy Idg TDZE Apt Elev	<b>9501</b> <b>2872</b> <b>2872</b>
--	------------------------	-----------------------------	---

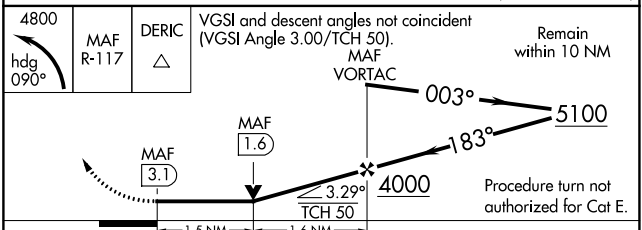
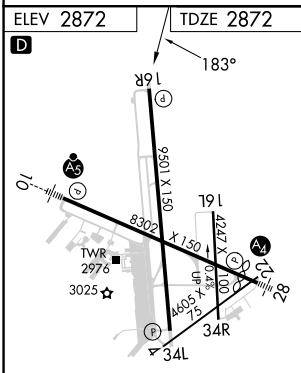
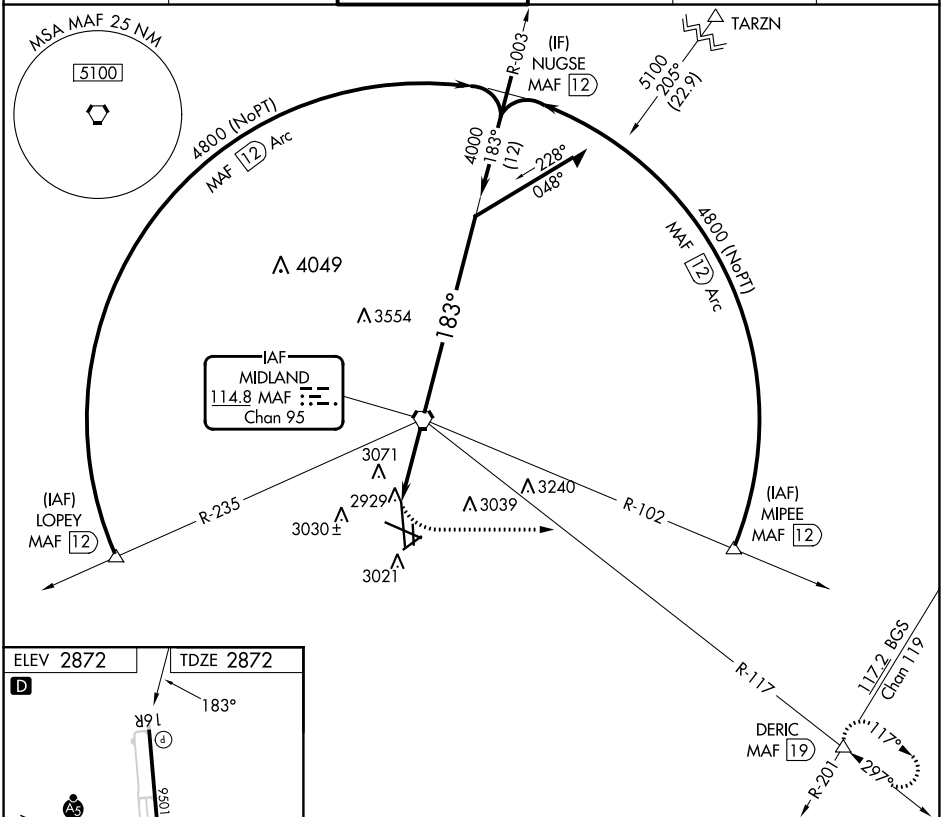
# VOR or TACAN RWY 16R

MIDLAND INTL AIR AND SPACE PORT (M.A.F.)

**⚠** Rwy 16R helicopter visibility reduction below 3/4 SM NA. Circling Rwy 16L NA at night.

MISSED APPROACH: Climbing left turn to 4800 on heading 090° and on MAF VORTAC R-117 to DERIC INT/MAF 19 DME and hold.

ATIS <b>126.8 235.975</b>	MIDLAND APP CON* <b>124.6 290.4</b>	MIDLAND TOWER* <b>118.7 (CTAF) 0273.45</b>	GND CON <b>121.9 348.6</b>	CLNC DEL <b>118.05 317.65</b>	UNICOM <b>122.95</b>
------------------------------	--	---	-------------------------------	----------------------------------	-------------------------



CATEGORY	A	B	C	D	E
S-16R	3400-1	528 (600-1)	3400-1½	528 (600-1½)	
CIRCLING	3440-1	568 (600-1)	3440-1½ 568 (600-1½)	3520-2 648 (700-2)	3600-2½ 728 (800-2½)

SC-3, 22 FEB 2024 to 21 MAR 2024

SC-3, 22 FEB 2024 to 21 MAR 2024

VORTAC MAF <b>114.8</b> Chan <b>95</b>	APP CRS <b>357°</b>	Rwy Idg TDZE Apt Elev	<b>9501</b> <b>2858</b> <b>2872</b>
--	------------------------	-----------------------------	---

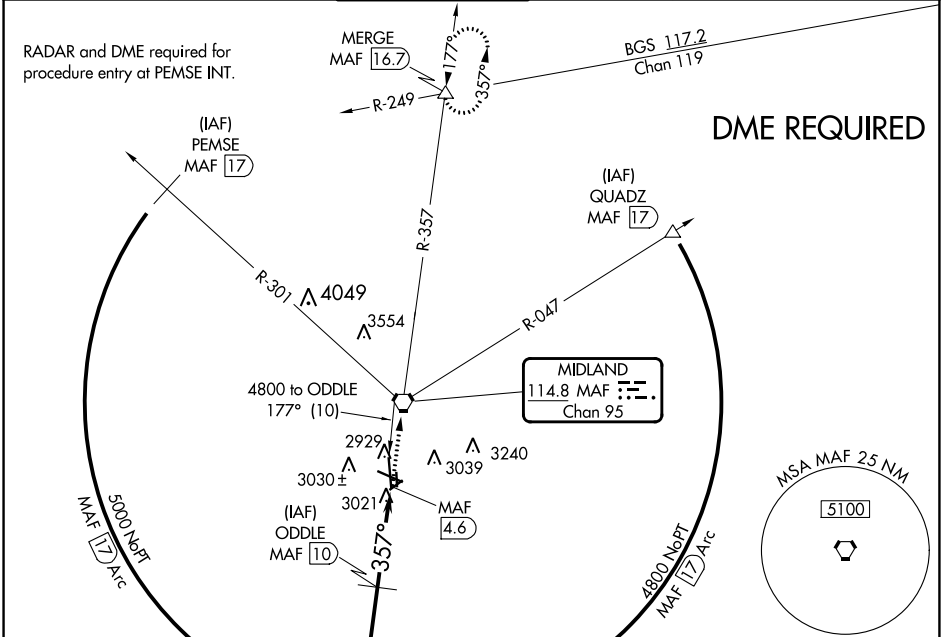
# VOR or TACAN RWY 34L

MIDLAND INTL AIR AND SPACE PORT (MAF)

**⚠** Circling Rwy 16L NA at night. Rwy 34L helicopter visibility reduction below 3/4 SM NA. DME required.

**⚠** MISSED APPROACH: Climb to 4800 direct MAF VORTAC and on MAF VORTAC R-357 to MERGE INT/MAF 16.7 DME and hold.

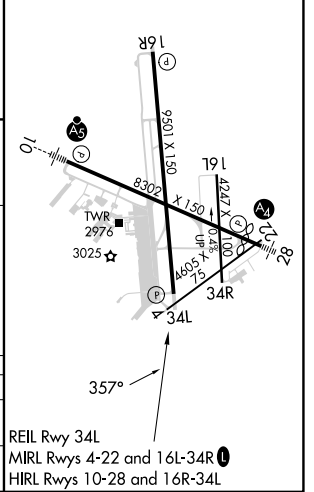
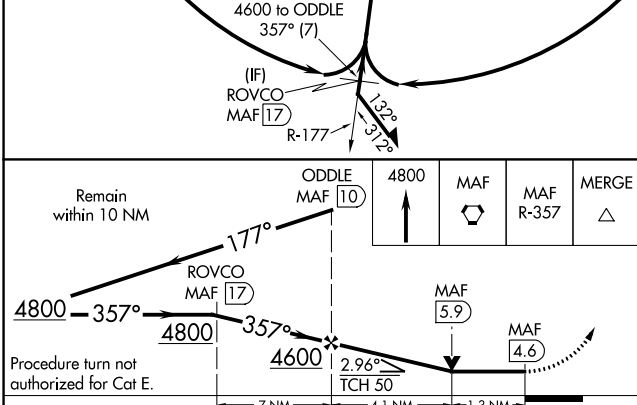
ATIS <b>126.8 235.975</b>	MIDLAND APP CON * <b>124.6 290.4</b>	MIDLAND TOWER * <b>118.7 (CTAF) 0273.45</b>	GND CON <b>121.9 348.6</b>	CLNC DEL <b>118.05 317.65</b>	UNICOM <b>122.95</b>
------------------------------	---	--	-------------------------------	----------------------------------	-------------------------



SC-3, 22 FEB 2024 to 21 MAR 2024

SC-3, 22 FEB 2024 to 21 MAR 2024

ELEV 2872	<b>D</b> TDZE 2858
-----------	--------------------



CATEGORY	A	B	C	D	E
S-34L	3320-1	462 (500-1)	3320-1 3/8	462 (500-1 3/8)	
CIRCLING	3440-1	568 (600-1)	3440-1 1/2 568 (600-1 1/2)	3520-2 648 (700-2)	3600-2 1/2 728 (800-2 1/2)