

WAAS CH 62909 W12A	APP CRS 122°	Rwy Idg TDZE Apt Elev	5545 253 255
--	------------------------	-----------------------------	---

RNAV (GPS) RWY 12

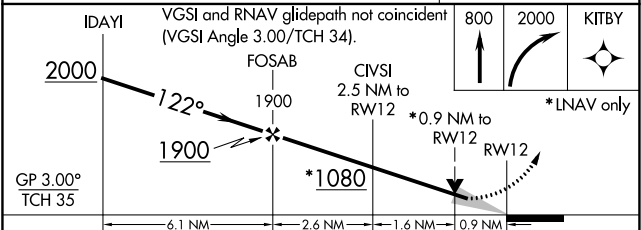
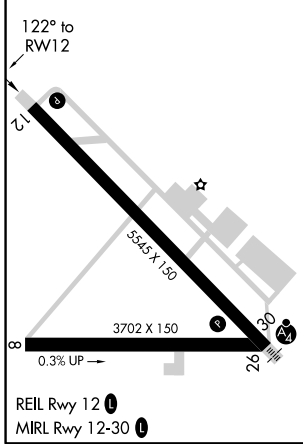
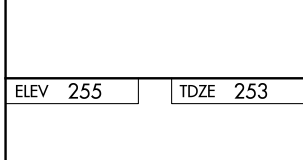
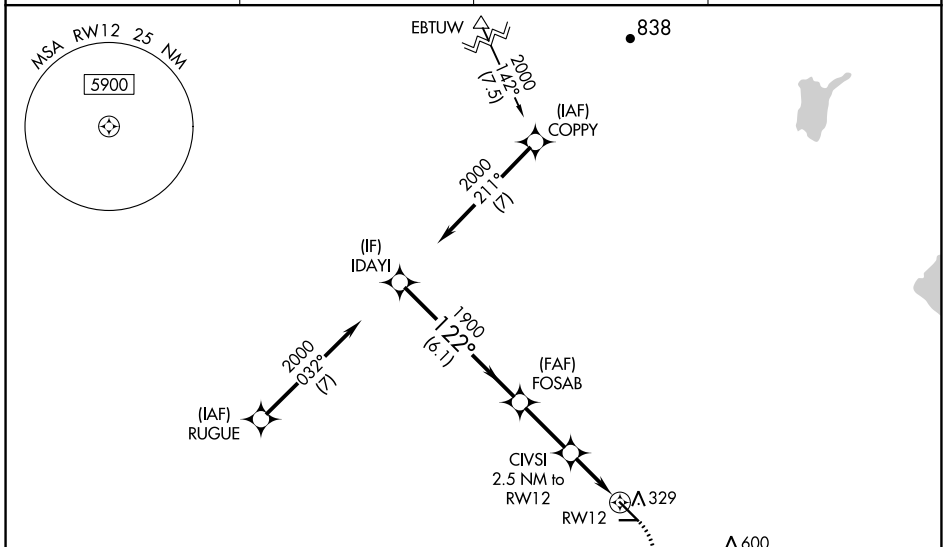
MADERA MUNI (M.A.E)

RNP APCH.

⚠ Circling NA to Rws 8 and 26.
For uncompensated Baro-VNAV systems, LNAV/VNAV NA below -3°C or above 54°C.

MISSED APPROACH:
Climb to 800 then climbing right turn to 2000 direct KITBY and hold.

ASOS 134.725	FRESNO APP CON 119.45	CLNC DEL 119.45	UNICOM 122.8 (CTAF) 0
------------------------	---------------------------------	---------------------------	--



CATEGORY	A	B	C	D
LPV DA	503-3/4	250 (300-3/4)		NA
LNAV/VNAV DA	503-3/4	250 (300-3/4)		NA
LNAV MDA	580-1	327 (400-1)		NA
C CIRCLING	680-1 425 (500-1)	720-1 465 (500-1)	740-1 1/2 485 (500-1 1/2)	NA

SW-2, 10 SEP 2020 to 08 OCT 2020

SW-2, 10 SEP 2020 to 08 OCT 2020

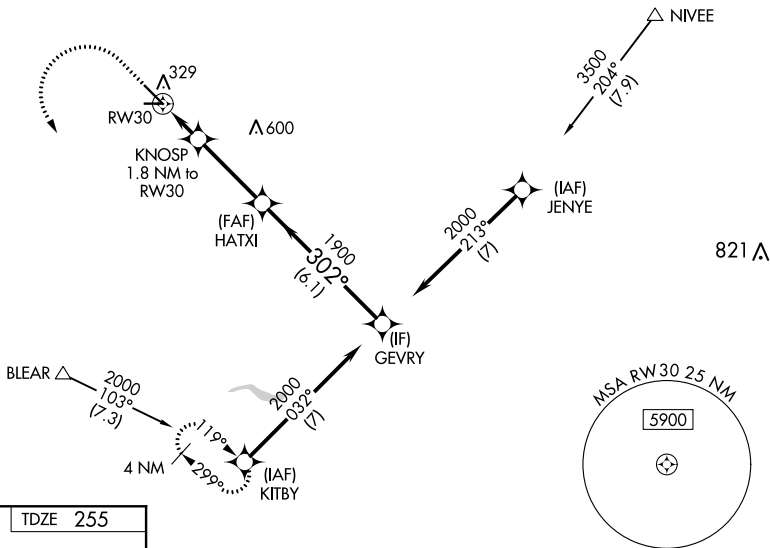
WAAS CH 90209 W30A	APP CRS 302°	Rwy Idg TDZE Apt Elev	5545 255 255
--	------------------------	-----------------------------	---

RNAV (GPS) RWY 30

MADERA MUNI (MAE)

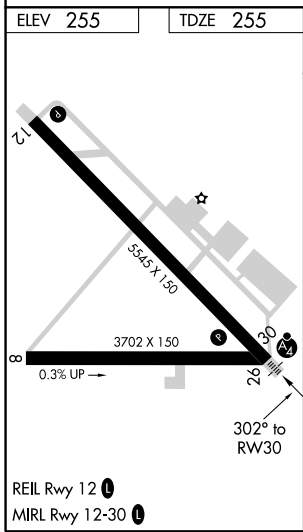
RNP APCH.	MALSF	MISSED APPROACH: Climb to 800 then climbing left turn to 2000 to KITBY and hold.
Circling NA to Rwy 8 and 26. For uncompensated Baro-VNAV systems, LNAV/VNAV NA below -3°C or above 54°C. Inop table does not apply to LPV and LNAV/VNAV Cat A/B/C.		

ASOS 134.725	FRESNO APP CON 119.45	CLNC DEL 119.45	UNICOM 122.8 (CTAF)
------------------------	---------------------------------	---------------------------	-------------------------------



SW-2, 10 SEP 2020 to 08 OCT 2020

SW-2, 10 SEP 2020 to 08 OCT 2020



800	2000	KITBY	VGSI and RNAV glidepath not coincident (VGSI Angle 3.00/TCH 34).	
*LNAV only	KNOSP 1.8 NM to RW30	HATXI 1900	GEVRY 2000	
	*1.1 NM to RW30			
	860*	1900	2000	
	1.1 NM	0.7 NM	3.3 NM	
			6.1 NM	
			GP 3.00° TCH 35	
CATEGORY	A	B	C	D
LPV DA	505-¾ 250 (300-¾)			NA
LNAV/VNAV DA	505-¾ 250 (300-¾)			NA
LNAV MDA	640-¾	385 (400-¾)	640-⅞ 385 (400-⅞)	NA
CIRCLING	680-1 425 (500-1)	720-1 465 (500-1)	740-1½ 485 (500-1½)	NA