

APP CRS	Rwy Idg	4800
227°	TDZE	666
	Apt Elev	666

RNAV (GPS) RWY 23

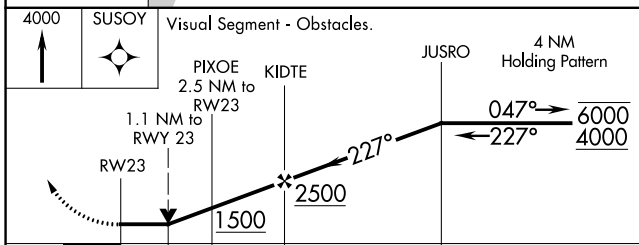
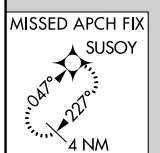
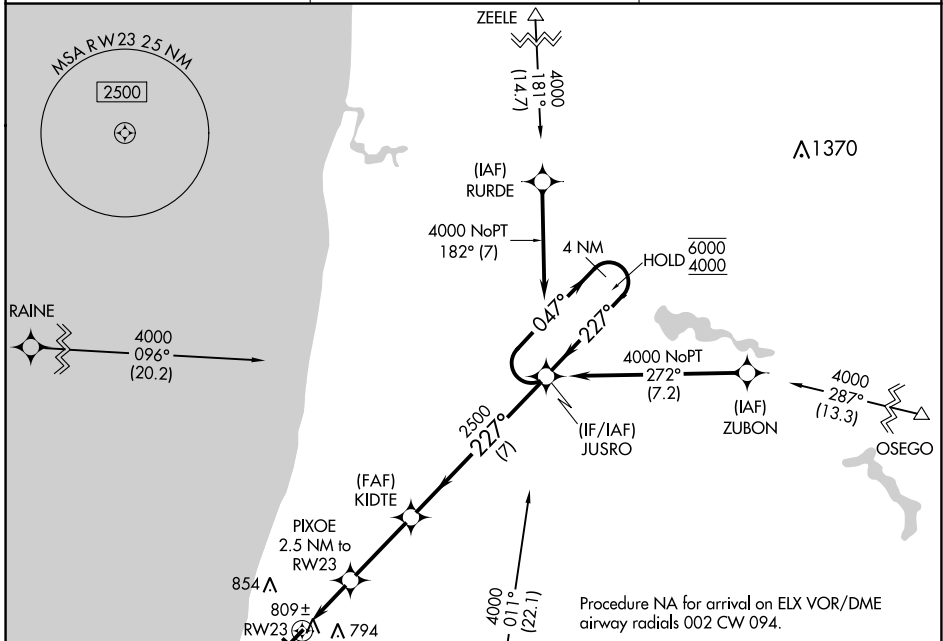
SOUTH HAVEN AREA RGNL (LWA)

RNP APCH.

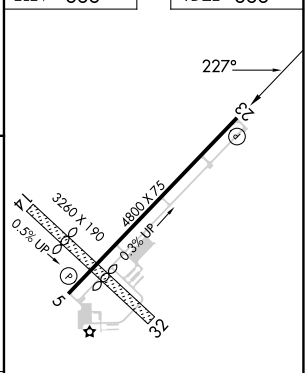
- Circling NA to Rwy 14 and 32.
- Rwy 23 helicopter visibility reduction below 3/4 SM NA.

MISSED APPROACH: Climb to 4000 direct SUSOY and hold. Continue climb-in-hold to 4000.

AWOS-3 118.025	SOUTH BEND APP CON ★ 118.55 257.8	UNICOM 122.8 (CTAF) 0
--------------------------	---	---------------------------------



ELEV 666	TDZE 666
----------	----------



CATEGORY	A	B	C	D
LNVA MDA	1060-1	394 (400-1)	1060-1 1/8	394 (400-1 1/8)
CIRCLING	1120-1 454 (500-1)	1140-1 474 (500-1)	1440-2 1/4 774 (800-2 1/4)	1440-2 1/2 774 (800-2 1/2)

REIL Rwy 5 and 23

MIRL Rwy 5-23

EC-1, 22 FEB 2024 to 21 MAR 2024

EC-1, 22 FEB 2024 to 21 MAR 2024

APP CRS	Rwy Idg	4800
047°	TDZE	659
	Apt Elev	666

RNAV (GPS) RWY 5

SOUTH HAVEN AREA RGNL (LWA)

RNP APCH.

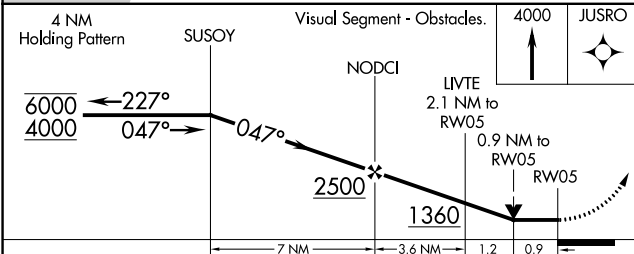
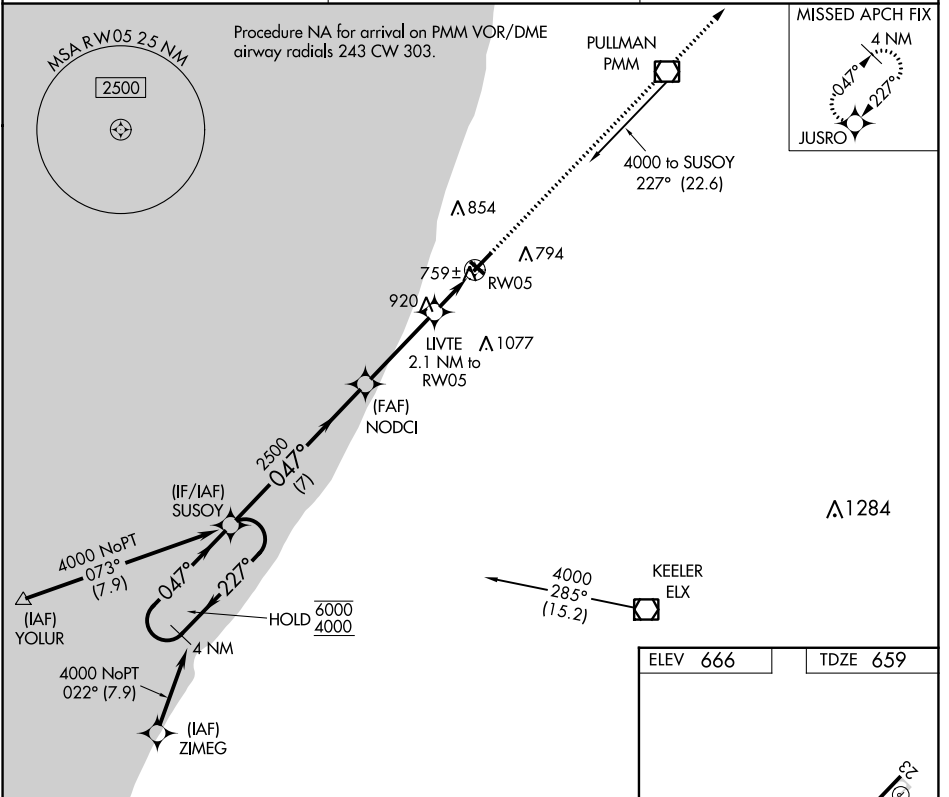
- ▼ Circling NA to Rwys 14 and 32.
- ▲ Rwy 5 helicopter visibility reduction below 3/4 SM NA.

MISSED APPROACH: Climb to 4000 direct JUSRO and hold, continue climb-in-hold to 4000.

AWOS-3
118.025

SOUTH BEND APP CON*
118.55 257.8

UNICOM
122.8 (CTAF)



ELEV 666	TDZE 659
----------	----------

3260 X 190
0.5% UP

4800 X 75
0.5% UP

047°

REIL Rwys 5 and 23
MIRL Rwy 5-23

CATEGORY	A	B	C	D
LNVA MDA	1020-1		361 (400-1)	
CIRCLING	1120-1 454 (500-1)	1140-1 474 (500-1)	1440-2 1/4 774 (800-2 1/4)	1440-2 1/2 774 (800-2 1/2)

EC-1, 22 FEB 2024 to 21 MAR 2024

EC-1, 22 FEB 2024 to 21 MAR 2024