

LOC I-LSE 111.1	APP CRS 180°	Rwy Idg 8536
		TDZE 653
		Apt Elev 656

ILS or LOC RWY 18

LA CROSSE RGNL (LSE)

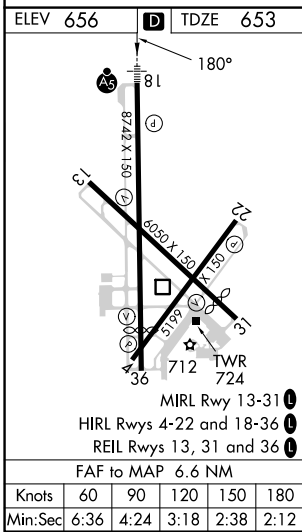
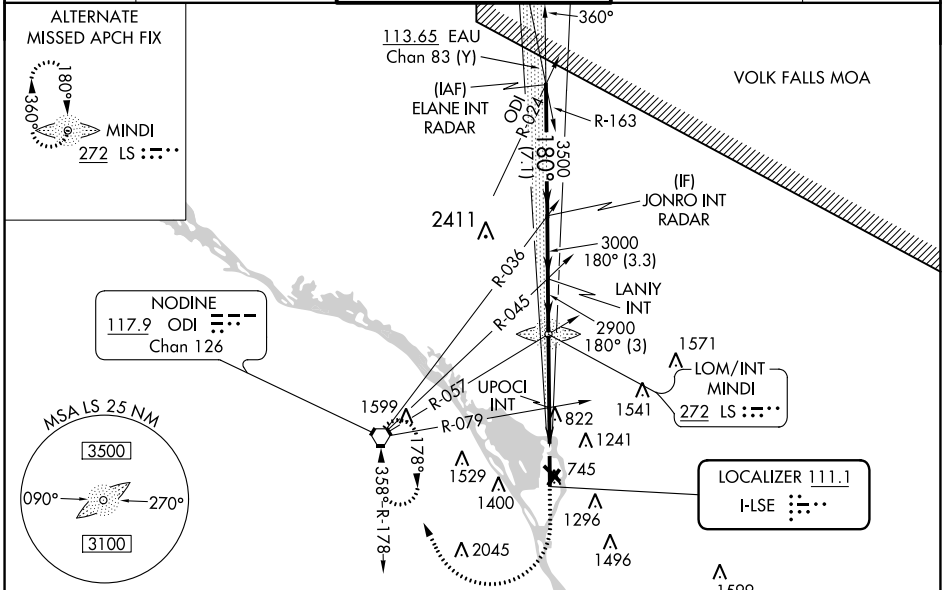
RADAR required for procedure entry.

MALS MISSED APPROACH: Climb to 2400 then climbing right turn to 3400 direct ODI VORTAC and hold.

⚠ Circling Rwy 22 NA at night. For inop ALS increase UPOCI fix minimums S-LOC Cats C/D visibility to 1 3/4 SM.

⚡ -22°C

ATIS 124.95	MINNEAPOLIS CENTER 128.6 363.0	LA CROSSE TOWER ★ 118.45 (CTAF) 251.075	GND CON 121.8	UNICOM 122.95
-----------------------	--	---	-------------------------	-------------------------



	JONRO INT RADAR	LANIY INT	MINDI LOM/INT	UPOCI INT	2400	3400	ODI
	3500	3000	2864	2900	*1600		
	GS 3.00° TCH 55						* LOC only.
	3.3 NM	3 NM	3.7 NM	2.9 NM			
CATEGORY	A	B	C	D			
S-ILS 18	853-1/2 200 (200-1/2)						
S-LOC 18	1600-3/4	947 (1000-3/4)	1600-2	947 (1000-2)			
CIRCLING	1600-1 1/4	944 (1000-1 1/4)	1760-3	1820-3	1104 (1200-3)	1164 (1200-3)	
UPOCI FIX MINIMUMS (DUAL VOR RECEIVERS REQUIRED)							
S-LOC 18	1140-1 1/2	487 (500-1/2)	1140-1	487 (500-1)			
CIRCLING	1140-1	484 (500-1)	1460-1	804 (900-1)	1760-3	1820-3	1104 (1200-1)
					1104 (1200-1)	1164 (1200-3)	

EC-3, 22 FEB 2024 to 21 MAR 2024

EC-3, 22 FEB 2024 to 21 MAR 2024

WAAS CH 56509 W13A	APP CRS 135°	Rwy Idg TDZE 656 Apt Elev 656	5310
--	------------------------	---	-------------

RNAV (GPS) RWY 13

LA CROSSE RGNL (LSE)

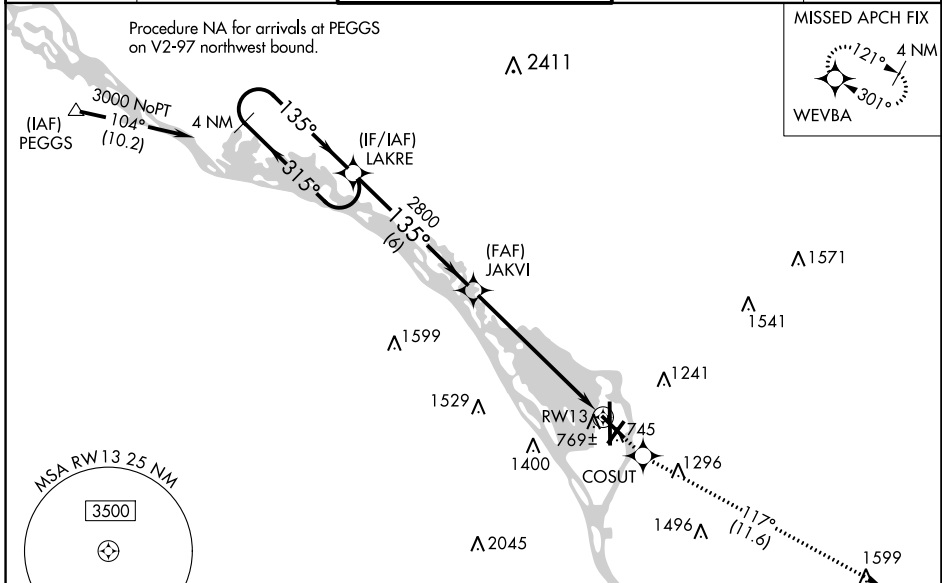
⚠ Baro-VNAV NA when using Winona altimeter setting. For uncompensated Baro-VNAV systems, LNAV/VNAV NA below -27° C (-1.6° F) or above 54° C (130° F). DME/DME RNP-0.3 NA. Helicopter visibility reduction below 3/4 SM NA. Circling to Rwy 22 NA at night.

⚠ -22°C

When local altimeter setting not received, use Winona altimeter setting and increase DA 53 feet, increase LPV and LNAV/VNAV visibility 1/4 mile all Cats, increase all MDA 60 feet, increase LNAV Cats C/D and Circling Cat B visibility 1/4 mile.

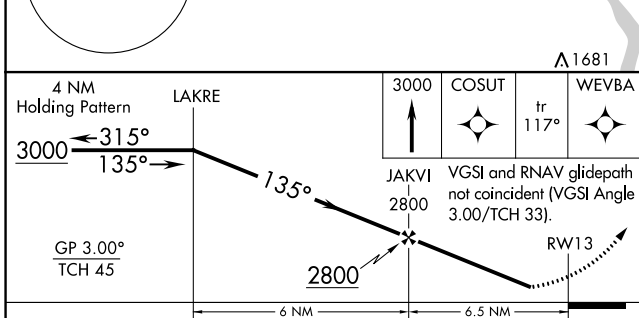
MISSED APPROACH:
Climb to 3000 direct COSUT and on track 117° to WEVBA and hold.

ATIS 124.95	MINNEAPOLIS CENTER 128.6 363.0	LA CROSSE TOWER * 118.45 (CTAF) 0 251.075	GND CON 121.8	UNICOM 122.95
-----------------------	--	---	-------------------------	-------------------------



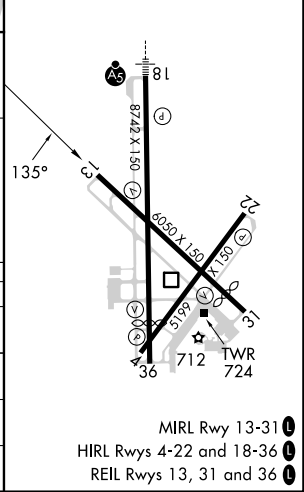
EC-3, 22 FEB 2024 to 21 MAR 2024

EC-3, 22 FEB 2024 to 21 MAR 2024



ELEV 656	D TDZE 656
----------	-------------------

CATEGORY	A	B	C	D
LPV DA	958-1 302 (400-1)			
LNAV/VNAV DA	1020-1 364 (400-1 1/4)			
LNAV MDA	1140-1	484 (500-1)	1140-1 3/8 484 (500-1 3/8)	1140-1 1/2 484 (500-1 1/2)
C CIRCLING	1140-1 484 (500-1)	1460-1 804 (900-1)	1760-3 1104 (1200-3)	1820-3 1164 (1200-3)



WAAS CH 72809 W18A	APP CRS 180°	Rwy Idg TDZE Apt Elev	8536 653 656
--	------------------------	-----------------------------	---


RNAV (GPS) RWY 18

LA CROSSE RGNL (LSE)

RNP APCH.

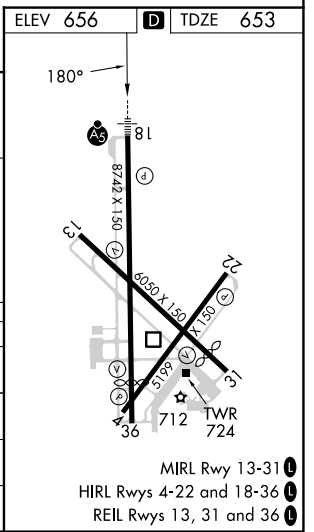
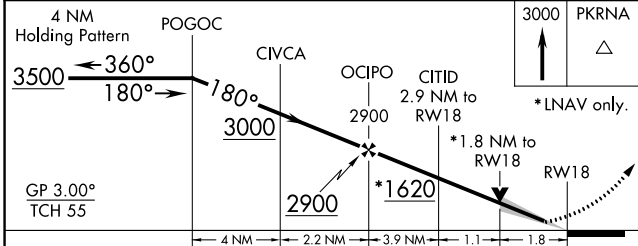
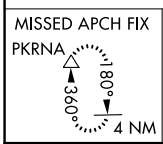
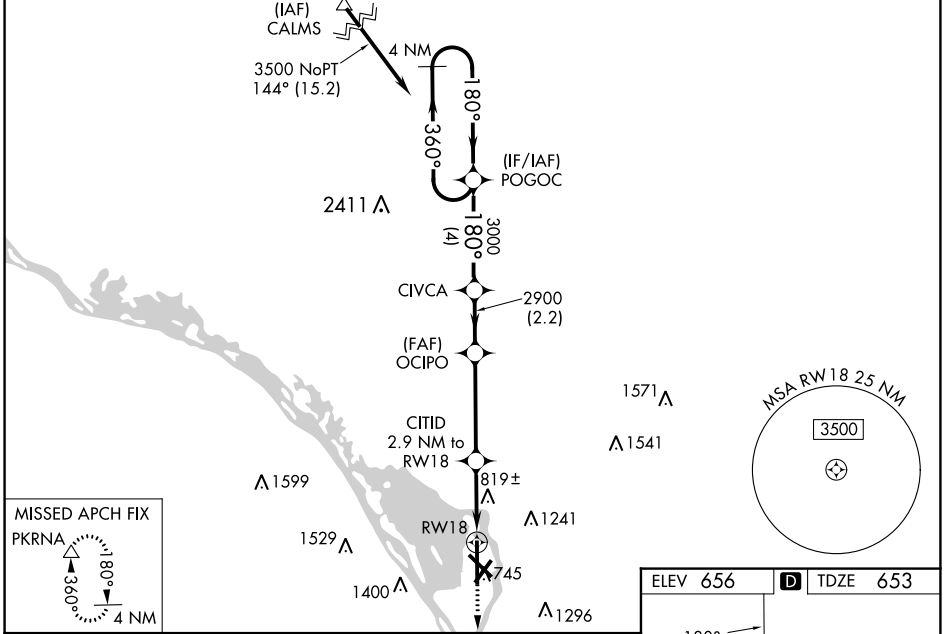
⚠ For uncompensated Baro-VNAV systems, LNAV/VNAV NA below -27° C or above 54° C. When local altimeter setting not received, use Winona altimeter setting; increase LPV DA to 987 feet, LNAV/VNAV DA to 1257 feet and all MDA 60 feet.

⚠ -22°C Increase LNAV/VNAV all Cats visibility ¼ SM and Circling Cat C visibility ¼ SM. For inoperative MALSR, increase LPV all Cats visibility ½ SM. LNAV minimums NA with Winona altimeter setting. Baro-VNAV and VDP NA when using Winona altimeter setting. Circling to Rwy 22 NA at night.

MALSR 

MISSED APPROACH: Climb to 3000 direct PKRNA and hold.

ATIS 124.95	MINNEAPOLIS CENTER 128.6 363.0	LA CROSSE TOWER ★ 118.45 (CTAF) 251.075	GND CON 121.8	UNICOM 122.95
-----------------------	--	---	-------------------------	-------------------------



CATEGORY	A	B	C	D
LPV DA	925-½		272 (300-½)	
LNAV/VNAV DA	1204-½		551 (600-½)	
LNAV MDA	1360-½	707 (800-½)	1360-1½	1360-1¾
	704 (800-1)	804 (900-1)	707 (800-1½)	707 (800-1¾)
C CIRCLING	1360-1	1460-1	1760-3	1820-3
	704 (800-1)	804 (900-1)	1104 (1200-3)	1164 (1200-3)

EC-3, 22 FEB 2024 to 21 MAR 2024

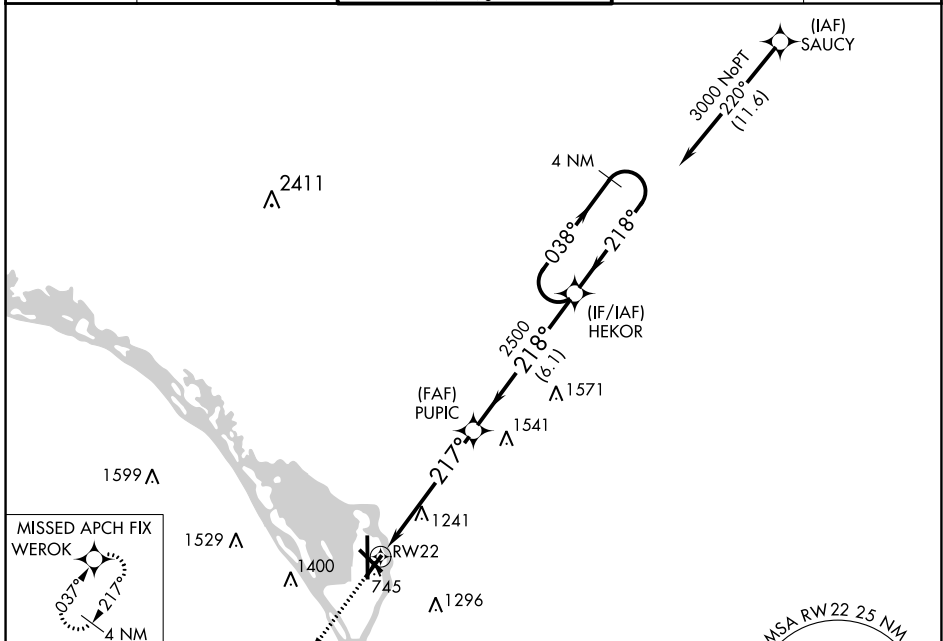
EC-3, 22 FEB 2024 to 21 MAR 2024

APP CRS 217°	Rwy Idg 5199
	TDZE 654
	Apt Elev 656

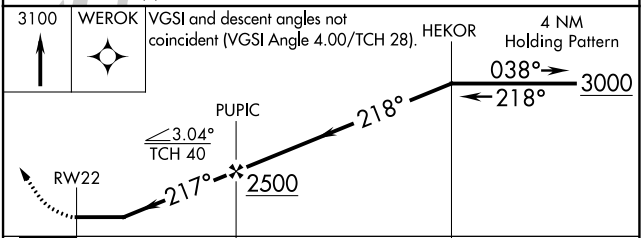
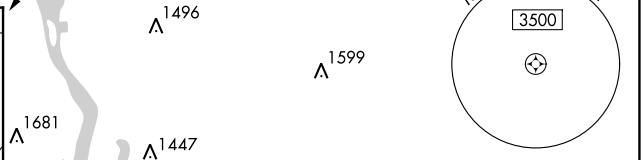
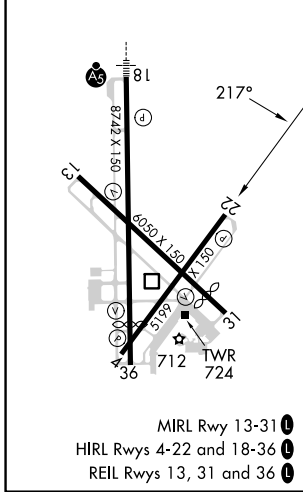
RNAV (GPS) RWY 22

LA CROSSE RGNL (LSE)

RNP APCH.		When local altimeter setting not received, use Winona altimeter setting and increase all MDA 60 feet. Rwy 22 helicopter visibility reduction below 1 SM NA.		MISSED APPROACH: Climb to 3100 direct WEROK and hold.	
ATIS 124.95	MINNEAPOLIS CENTER 128.6 363.0	LA CROSSE TOWER ★ 118.45 (CTAF) 251.075	GND CON 121.8	UNICOM 122.95	



ELEV 656	D	TDZE 654
----------	----------	----------



CATEGORY	A	B	C	D
LNAV MDA	1820-1/4 1166 (1200-1/4)	1820-1/2 1166 (1200-1/2)	1820-3	1166 (1200-3)
C CIRCLING	1820-1/4 1164 (1200-1/4)	1820-1/2 1164 (1200-1/2)	1820-3	1164 (1200-3)

EC-3, 22 FEB 2024 to 21 MAR 2024

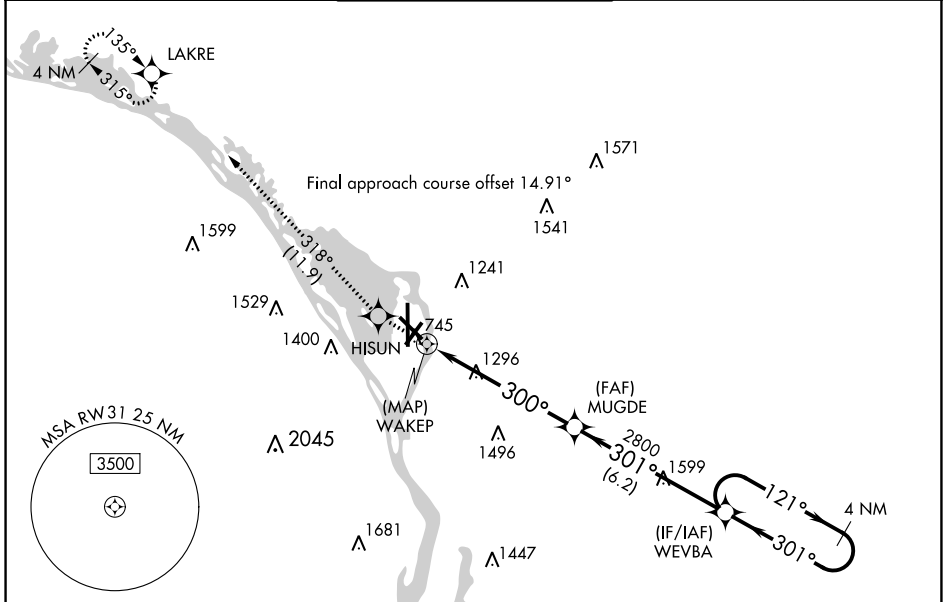
EC-3, 22 FEB 2024 to 21 MAR 2024

APP CRS	Rwy Idg	5310
300°	TDZE	654
	Apt Elev	656

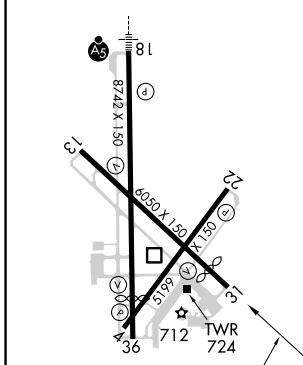
RNAV (GPS) RWY 31

LA CROSSE RGNL (LSE)

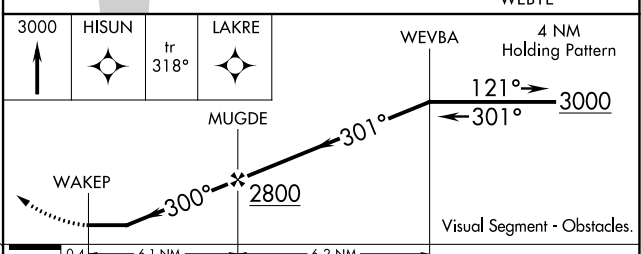
RNP APCH.		<p>⚠ Circling Rwy 22 NA at night. Rwy 31 helicopter visibility reduction below 1 SM NA. When local altimeter setting not received, use Winona altimeter setting and increase all MDA 60 feet.</p> <p>❄ -22°C</p>		<p>MISSED APPROACH: Climb to 3000 direct HISUN and on track 318° to LAKRE and hold.</p>	
<p>ATIS</p> <p>124.95</p>	<p>MINNEAPOLIS CENTER</p> <p>128.6 363.0</p>	<p>LA CROSSE TOWER ★</p> <p>118.45 (CTAF) 251.075</p>	<p>GND CON</p> <p>121.8</p>	<p>UNICOM</p> <p>122.95</p>	



ELEV 656	D	TDZE 654
----------	----------	----------



MIRL Rwy 13-31	Ⓛ
HIRL Rwy 4-22 and 18-36	Ⓛ
REIL Rwy 13, 31 and 36	Ⓛ



CATEGORY	A	B	C	D
LNAV MDA	1720-1¼ 1066 (1100-1¼)	1720-1½ 1066 (1100-1½)	1720-3	1066 (1100-3)
C CIRCLING	1720-1¼ 1064 (1100-1¼)	1720-1½ 1064 (1100-1½)	1760-3	1820-3 1164 (1200-3)

EC-3, 22 FEB 2024 to 21 MAR 2024

EC-3, 22 FEB 2024 to 21 MAR 2024

WAAS CH 86509 W36A	APP CRS 360°	Rwy Idg TDZE 653 Apt Elev 656	7433
--	------------------------	---	-------------

RNAV (GPS) RWY 36

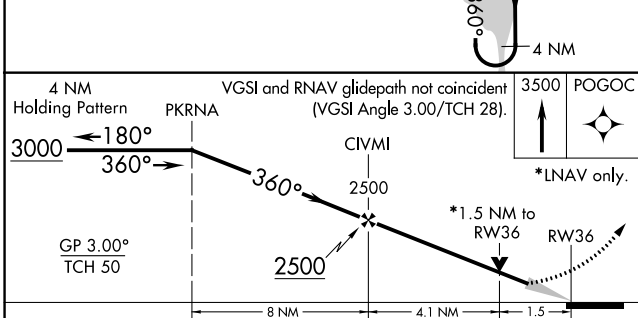
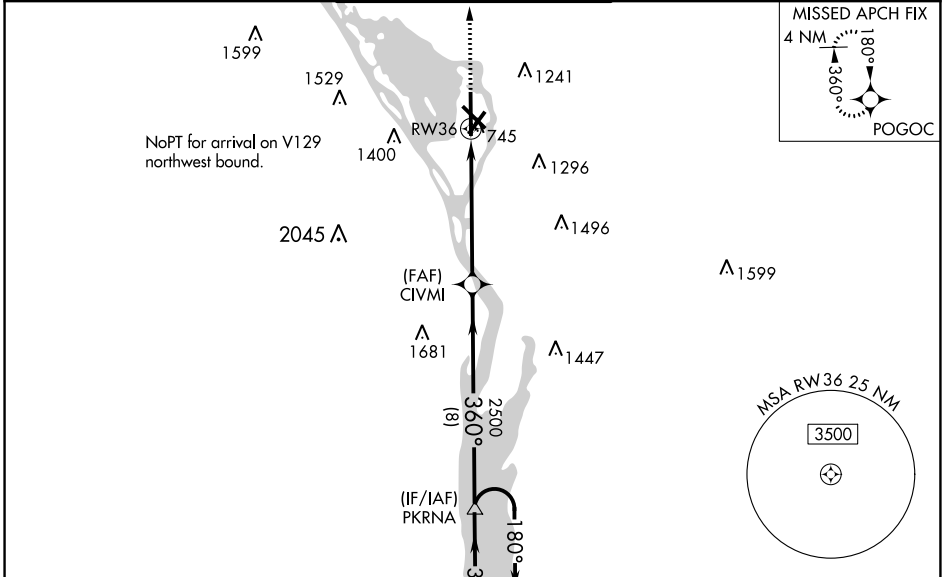
LA CROSSE RGNL (LSE)

RNP APCH.

⚠ For uncompensated Baro-VNAV systems, LNAV/VNAV NA below -27° C or above 54° C. When local altimeter setting not received, use Winona altimeter setting: increase LPV DA to 1006 feet, LNAV/VNAV DA to 1256 feet and all MDA 60 feet. Increase LPV all Cats visibility ¼ SM, LNAV/VNAV all Cats visibility ¼ SM, LNAV Cats C/D visibility ¼ SM and Circling Cat C visibility ¼ SM. Circling to Rwy 22 NA at night. Baro-VNAV and VDP NA when using Winona altimeter setting.

MISSED APPROACH:
Climb to 3500 direct POGOC and hold.

ATIS 124.95	MINNEAPOLIS CENTER 128.6 363.0	LA CROSSE TOWER ★ 118.45 (CTAF) 251.075	GND CON 121.8	UNICOM 122.95
-----------------------	--	---	-------------------------	-------------------------



ELEV 656 [D] TDZE 653

MIRL Rwy 13-31

HIRL Rwys 4-22 and 18-36

REIL Rwys 13, 31 and 36

CATEGORY	A	B	C	D
LPV DA	953-1		300 (300-1)	
LNAV/VNAV DA	1203-2		550 (600-2)	
LNAV MDA	1140-1	487 (500-1)	1140-1½ 487 (500-1¼)	1140-1½ 487 (500-1½)
CIRCLING	1140-1 484 (500-1)	1460-1 804 (900-1)	1760-3 1104 (1200-3)	1820-3 1164 (1200-3)

EC-3, 22 FEB 2024 to 21 MAR 2024

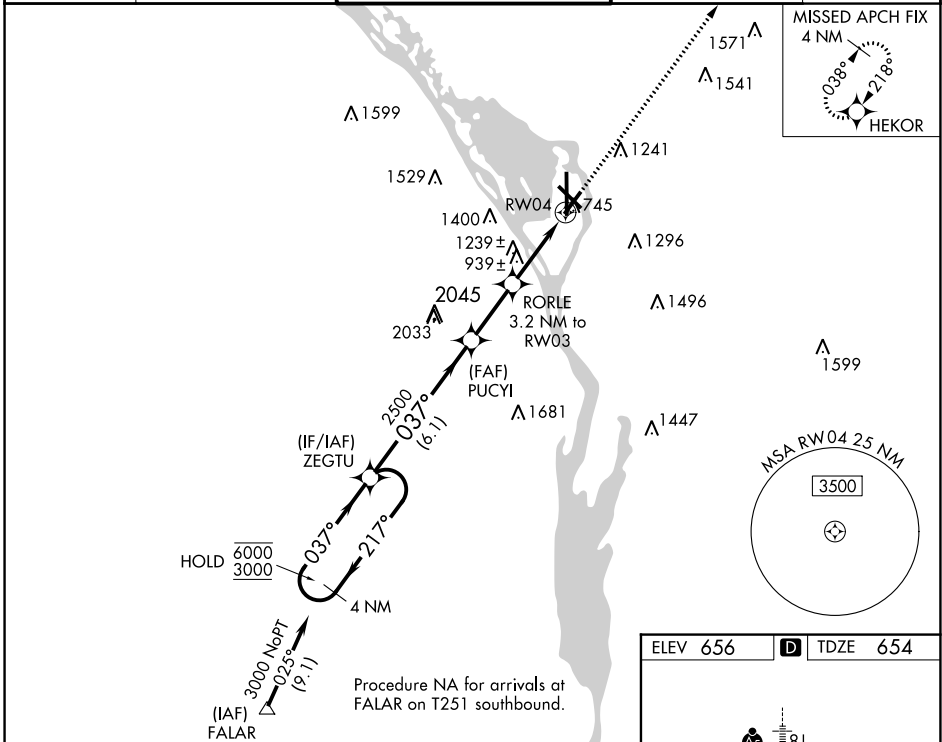
EC-3, 22 FEB 2024 to 21 MAR 2024

WAAS CH 82622 W04A	APP CRS 037°	Rwy Idg 5199 TDZE 654 Apt Elev 656
--	------------------------	---

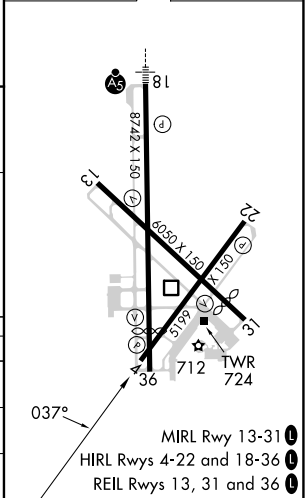
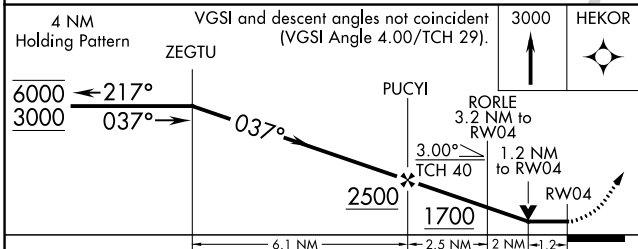
RNAV (GPS) RWY 4

LA CROSSE RGNL (LSE)

RNP APCH. Circling Rwy 22 NA at night. Rwy 22 helicopter visibility reduction below 3/4 SM NA. -22°C		MISSED APPROACH: Climb to 3000 direct HEKOR and hold.		
ATIS 124.95	MINNEAPOLIS CENTER 128.6 363.0	LA CROSSE TOWER * 118.45 (CTAF) 251.075	GND CON 121.8	UNICOM 122.95



ELEV 656	D TDZE 654
----------	-------------------



CATEGORY	A	B	C	D
LP MDA	1200-1	546 (600-1)	1200-1 5/8	546 (600-1 5/8)
LNAV MDA	1620-1 1/4 966 (1000-1 1/4)	1620-1 1/2 966 (1000-1 1/2)	1620-3	966 (1000-3)
C CIRCLING	1620-1 1/4 964 (1000-1 1/4)	1620-1 1/2 964 (1000-1 1/2)	1760-3 1104 (1200-3)	1820-3 1164 (1200-3)

EC-3, 22 FEB 2024 to 21 MAR 2024

EC-3, 22 FEB 2024 to 21 MAR 2024