

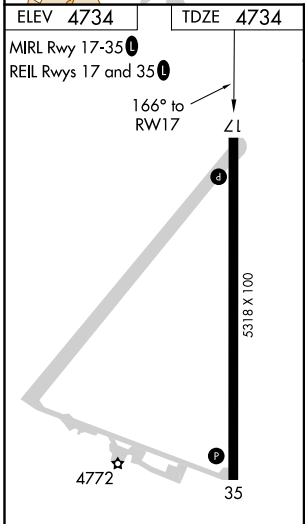
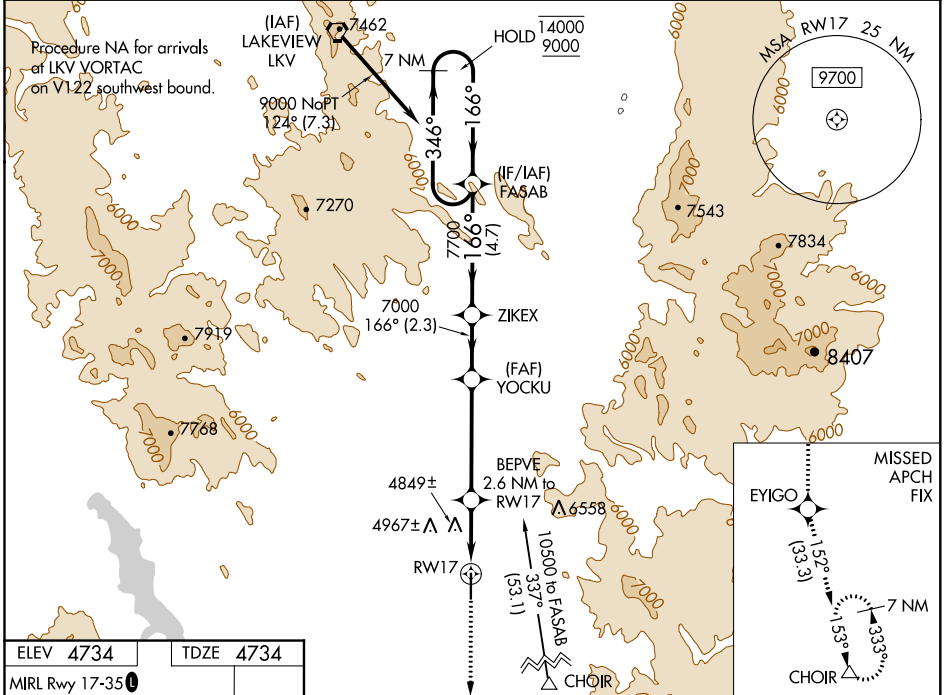
WAAS CH <b>93532</b> <b>W17A</b>	APP CRS <b>166°</b>	Rwy Idg TDZE Apt Elev	<b>5318</b> <b>4734</b> <b>4734</b>
--	------------------------	-----------------------------	---

# RNAV (GPS) RWY 17

LAKE COUNTY (LKV)

RNP APCH.	MISSED APPROACH: Climb to 11000 direct EYIGO and on track 152° to CHOIR and hold.
-----------	---

AWOS-3PT <b>135.525</b>	SEATTLE CENTER <b>127.6 346.35</b>	UNICOM <b>122.8 (CTAF) 0</b>
----------------------------	---------------------------------------	---------------------------------



ELEV 4734	TDZE 4734				
11000	EYIGO	tr 152°	CHOIR	FASAB	7 NM Holding Pattern
*LNAV only.	BEPVE 2.6 NM to RWY 17	YOCKU 7000	ZIKEX		
*1 NM to RWY 17					
1 NM	1.6 NM	4.3 NM	2.3 NM	4.7 NM	
CATEGORY	A	B	C	D	
LPV DA		4984-1	250 (300-1)		
LNAV/VNAV DA		5139-1½	405 (500-1½)		
LNAV MDA		5100-1	366 (400-1)		
CIRCLING	5160-1 426 (500-1)	5220-1 486 (500-1)	5460-2 726 (800-2)	5500-2½ 766 (800-2½)	

NW-1, 22 APR 2021 to 20 MAY 2021

NW-1, 22 APR 2021 to 20 MAY 2021

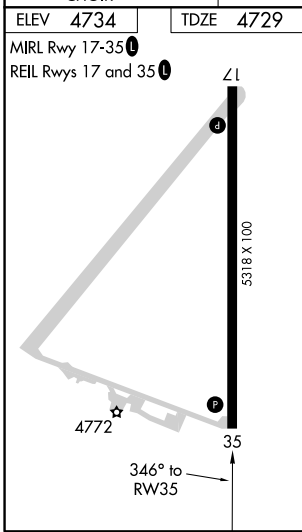
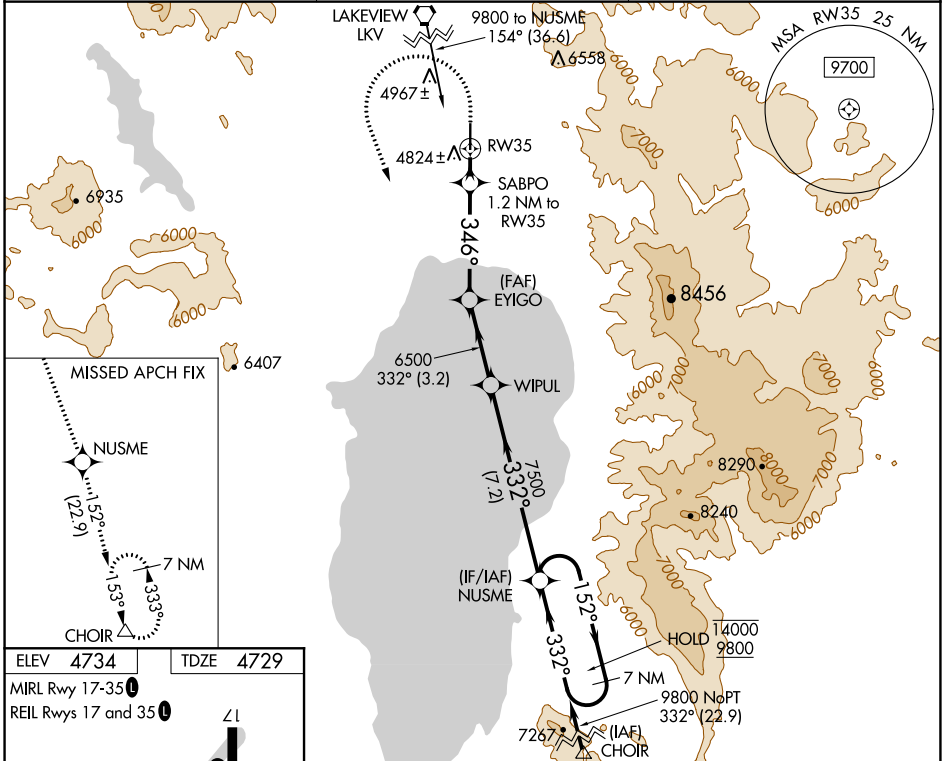
WAAS CH <b>99332</b> <b>W35A</b>	APP CRS <b>346°</b>	Rwy Idg TDZE Apt Elev	<b>5318</b> <b>4729</b> <b>4734</b>
--	------------------------	-----------------------------	---

# RNAV (GPS) RWY 35

LAKE COUNTY (LKV)

RNP APCH.	MISSED APPROACH: (Do not exceed 235K until NUSME) Climb to 5200 then climbing left turn to 11000 direct NUSME and on track 152° to CHOIR and hold.
<p>For uncompensated Baro-VNAV systems, LNAV/VNAV NA below -24°C or above 50°C. Circling NA east of Rwy 17-35.</p>	

AWOS-3PT <b>135.525</b>	SEATTLE CENTER <b>127.6 346.35</b>	UNICOM <b>122.8 (CTAF) 0</b>
----------------------------	---------------------------------------	---------------------------------



5200	11000	NUSME	tr 152°	CHOIR	NUSME	7 NM Holding Pattern
* LNAV only		SABPO 1.2 NM to RW35	6500	WIPUL	7500	152° → 14000 9800
RW35		5160*	6500	332°	← 332°	GP 3.00° TCH 45
1.2 NM		4.2 NM	3.2 NM	7.2 NM		
CATEGORY	A	B	C	D		
LPV DA	4979-1 250 (300-1)					
LNAV/VNAV DA	5121-1½ 392 (400-1½)					
LNAV MDA	5080-1 351 (400-1)					
CIRCLING	5160-1	5220-1	5320-2	5480-2½		
	426 (500-1)	486 (500-1)	586 (600-2)	746 (800-2½)		

NW-1, 22 APR 2021 to 20 MAY 2021

NW-1, 22 APR 2021 to 20 MAY 2021