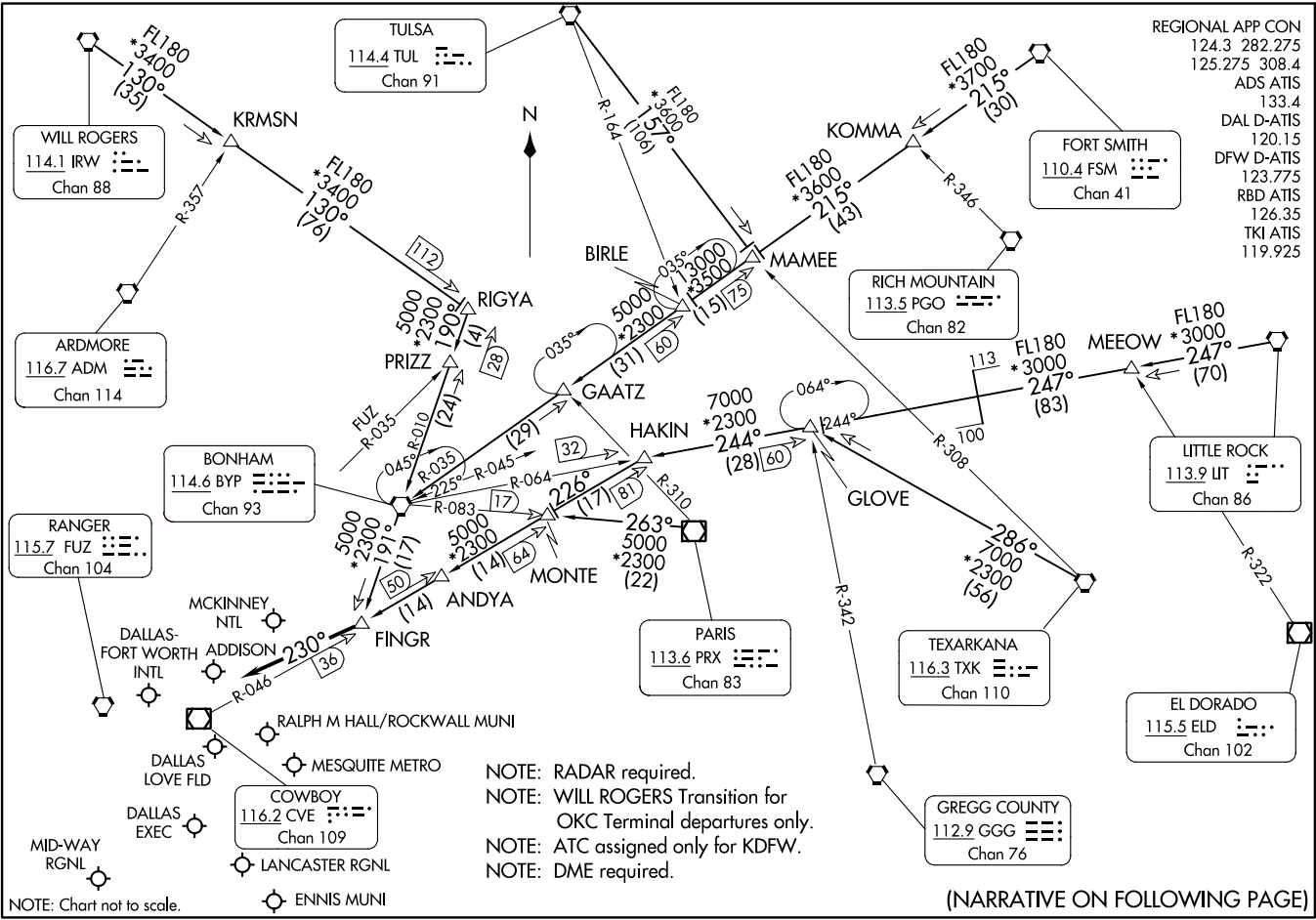


FINGR NINE ARRIVAL
(FINGR.FINGR9) 20APR23

FINGR NINE ARRIVAL
(FINGR.FINGR9) 23334



- REGIONAL APP CON
- 124.3 282.275
 - 125.275 308.4
 - ADS ATIS 133.4
 - DAL D-ATIS 120.15
 - DFW D-ATIS 123.775
 - RBD ATIS 126.35
 - TKI ATIS 119.925

AL-106 (FAA)

DALLAS-FORT WORTH, TEXAS

- NOTE: RADAR required.
- NOTE: WILL ROGERS Transition for OKC Terminal departures only.
- NOTE: ATC assigned only for KDFW.
- NOTE: DME required.

(NARRATIVE ON FOLLOWING PAGE)

DALLAS-FORT WORTH, TEXAS

ARRIVAL ROUTE DESCRIPTION

BONHAM TRANSITION (BYP.FINGR9): From over BYP VORTAC on BYP R-191 to FINGR. Thence

FORT SMITH TRANSITION (FSM.FINGR9): From over FSM VORTAC on FSM R-215 to MAMEE, then on BYP R-035 to BYP VORTAC, then on BYP R-191 to FINGR. Thence

LITTLE ROCK TRANSITION (LIT.FINGR9): From over LIT VORTAC on LIT R-247 to MEEOW, then on LIT R-247 and BYP R-064 to GLOVE, then on BYP R-064 to HAKIN, then on CVE R-046 to FINGR. Thence

PARIS TRANSITION (PRX.FINGR9): From over PRX VOR/DME on PRX R-263 to MONTE, then on CVE R-046 to FINGR. Thence

RIGYA TRANSITION (RIGYA.FINGR9): From over RIGYA on BYP R-010 to BYP VORTAC, then on BYP R-191 to FINGR. Thence

TEXARKANA TRANSITION (TXK.FINGR9): From over TXK VORTAC on TXK R-286 to GLOVE, then on BYP R-064 to HAKIN, then on CVE R-046 to FINGR. Thence

TULSA TRANSITION (TUL.FINGR9): From over TUL VORTAC on TUL R-157 to MAMEE, then on BYP R-035 to BYP VORTAC, then on BYP R-191 to FINGR. Thence

WILL ROGERS TRANSITION (IRW.FINGR9): From over IRW VORTAC on IRW R-130 to RIGYA, then on BYP R-010 to BYP VORTAC, then on BYP R-191 to FINGR. Thence

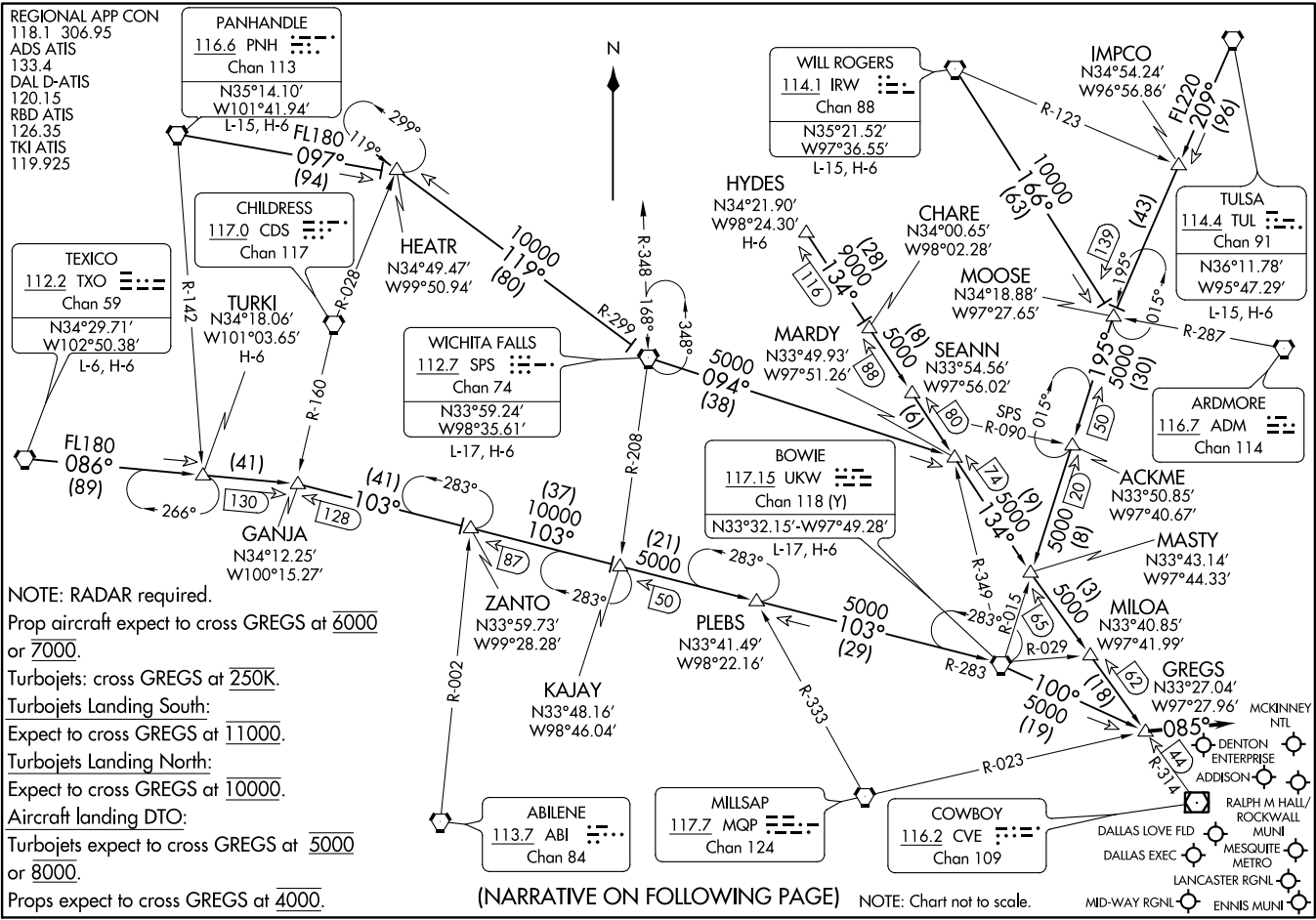
. . . . from FINGR, then on heading 230° or as assigned by ATC. Expect RADAR vectors to final approach course.

SC-2, 22 FEB 2024 to 21 MAR 2024

SC-2, 22 FEB 2024 to 21 MAR 2024

GREGS ONE ARRIVAL
(GREGS, GREGS 1) 14JUL22

(GREGS, GREGS 1) 22195
GREGS ONE ARRIVAL



NOTE: RADAR required.
 Prop aircraft expect to cross GREGS at 6000 or 7000.
 Turbojets: cross GREGS at 250K.
 Turbojets Landing South:
 Expect to cross GREGS at 11000.
 Turbojets Landing North:
 Expect to cross GREGS at 10000.
 Aircraft landing DTO:
 Turbojets expect to cross GREGS at 5000 or 8000.
 Props expect to cross GREGS at 4000.

(NARRATIVE ON FOLLOWING PAGE)

NOTE: Chart not to scale.

DALLAS-FORT WORTH, TEXAS

DALLAS-FORT WORTH, TEXAS

ARRIVAL DESCRIPTION

BOWIE TRANSITION (UKW.GREGS1): From over UKW VORTAC on UKW R-100 to GREGS. Thence. . . .

HYDES TRANSITION (HYDES.GREGS1): From over HYDES on CVE R-314 to GREGS. Thence. . . .

PANHANDLE TRANSITION (PNH.GREGS1): From over PNH VORTAC on PNH R-097 to HEATR, then on SPS R-299 to SPS VORTAC, then on SPS R-094 to MARDY, then on CVE R-314 to GREGS. Thence. . . .

TEXICO TRANSITION (TXO.GREGS1): From over TXO VORTAC on TXO R-086 to GANJA, then on UKW R-283 to UKW VORTAC, then on UKW R-100 to GREGS. Thence. . . .

TULSA TRANSITION (TUL.GREGS1): From over TUL VORTAC on TUL R-209 to MOOSE, then on UKW R-015 to MASTY, then on CVE R-314 to GREGS. Thence. . . .

TURKI TRANSITION (TURKI.GREGS1): From over TURKI on TXO R-086 to GANJA, then on UKW R-283 to UKW VORTAC, then on UKW R-100 to GREGS. Thence. . . .

WICHITA FALLS TRANSITION (SPS.GREGS1): From over SPS VORTAC on SPS R-094 to MARDY, then on CVE R-314 to GREGS. Thence. . . .

WILL ROGERS TRANSITION (IRW.GREGS1): From over IRW VORTAC on IRW R-166 to MOOSE, then on UKW R-015 to MASTY, then on CVE R-314 to GREGS. Thence. . . .

. . . .from over GREGS, depart GREGS heading 085°. Expect RADAR vectors to final approach course.

SC-2, 22 FEB 2024 to 21 MAR 2024

SC-2, 22 FEB 2024 to 21 MAR 2024

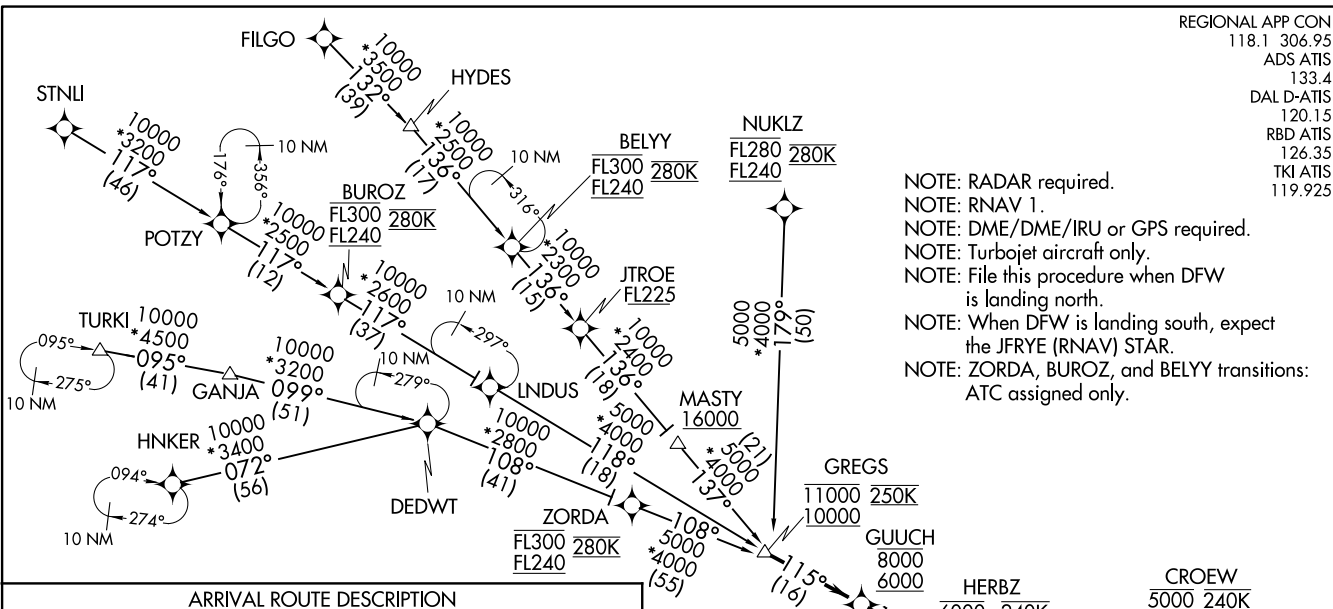
HERBZ ONE ARRIVAL (RNAV)
(GREGS.HERBZ1) 17JUN21

(GREGS.HERBZ1) 21224
HERBZ ONE ARRIVAL (RNAV)

A1-106 (FAA)

REGIONAL APP CON
118.1 306.95
ADS ATIS
133.4
DAL D-ATIS
120.15
RBD ATIS
126.35
TKI ATIS
119.925

NOTE: RADAR required.
NOTE: RNAV 1.
NOTE: DME/DME/IRU or GPS required.
NOTE: Turbojet aircraft only.
NOTE: File this procedure when DFW is landing north.
NOTE: When DFW is landing south, expect the JFRYE (RNAV) STAR.
NOTE: ZORDA, BUROZ, and BELYI transitions: ATC assigned only.



ARRIVAL ROUTE DESCRIPTION

- BELYI TRANSITION (BELYI.HERBZ1)
- BUROZ TRANSITION (BUROZ.HERBZ1)
- FILGO TRANSITION (FILGO.HERBZ1)
- HNKER TRANSITION (HNKER.HERBZ1)
- HYDES TRANSITION (HYDES.HERBZ1)
- NUKLZ TRANSITION (NUKLZ.HERBZ1)
- STNLI TRANSITION (STNLI.HERBZ1)
- TURKI TRANSITION (TURKI.HERBZ1)
- ZORDA TRANSITION (ZORDA.HERBZ1)

LANDING ALL AIRPORTS: From GREGS on track 115° to cross GUUCH between 6000 and 8000, then on track 115° to cross HERBZ at 6000 and at 240K, then on track 113°. Expect RADAR vectors to final approach course.

DALLAS, TEXAS



NOTE: Chart not to scale.

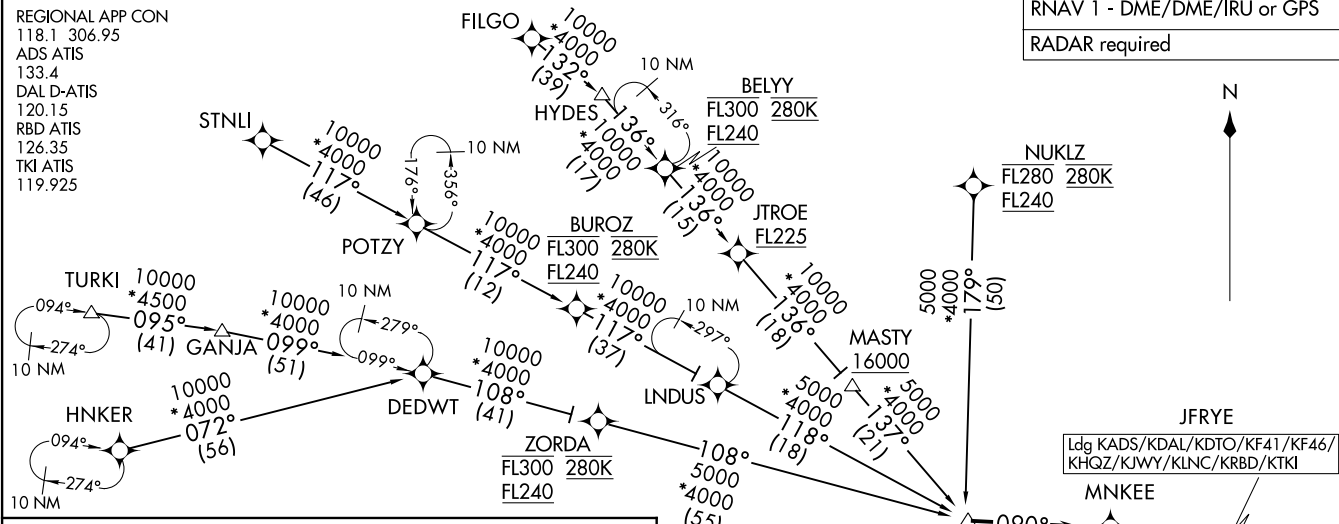
DALLAS, TEXAS

JFRYE FIVE ARRIVAL (RNAV)
 (GREGS.JFRYE5) 14JUL22

(GREGS.JFRYE5) 22195
 JFRYE FIVE ARRIVAL (RNAV)

REGIONAL APP CON
 118.1 306.95
 ADS ATIS
 133.4
 DAL D-ATIS
 120.15
 RBD ATIS
 126.35
 TKI ATIS
 119.925

RNAV 1 - DME/DME/IRU or GPS
 RADAR required



ARRIVAL ROUTE DESCRIPTION

- BELY TRANSITION (BELY.JFRYE5)
- BUROZ TRANSITION (BUROZ.JFRYE5)
- FILGO TRANSITION (FILGO.JFRYE5)
- HNKER TRANSITION (HNKER.JFRYE5)
- HYDES TRANSITION (HYDES.JFRYE5)
- NUKLZ TRANSITION (NUKLZ.JFRYE5)
- STNLI TRANSITION (STNLI.JFRYE5)
- TURKI TRANSITION (TURKI.JFRYE5)
- ZORDA TRANSITION (ZORDA.JFRYE5)

LANDING ALL AIRPORTS: From GREGS on track 090° to MNKEE, then on track 116° to JFRYE, then on track 143°. Expect RADAR vectors to final approach course.

- NOTE: Jet aircraft only.
- NOTE: When DFW is landing north, expect the HERBZ RNAV STAR.
- NOTE: ZORDA, BUROZ, and BELY Enroute Transitions - ATC assigned only.

NOTE: Chart not to scale.

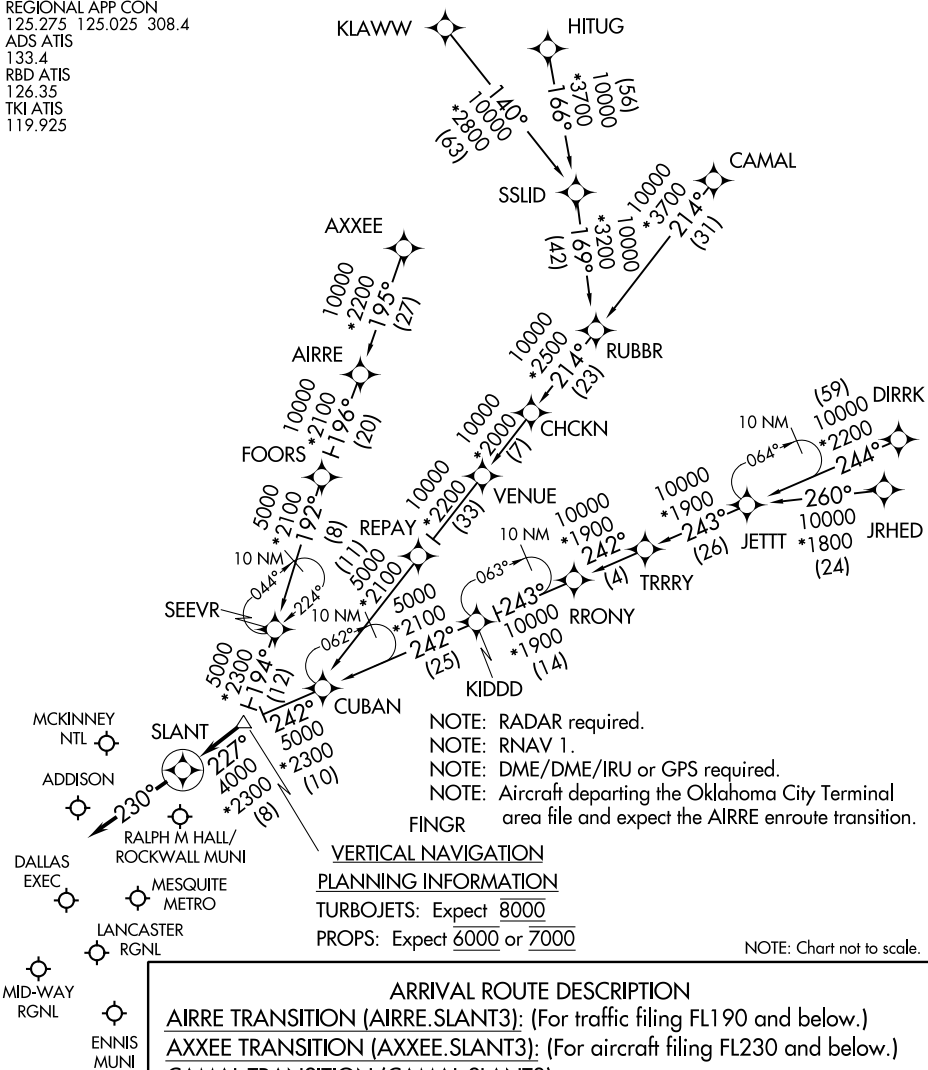
DALLAS, TEXAS

AL-106 (FAA)
 DALLAS, TEXAS

SLANT THREE ARRIVAL (RNAV)

DALLAS, TEXAS

REGIONAL APP CON
 125.275 125.025 308.4
 ADS ATIS
 133.4
 RBD ATIS
 126.35
 TKI ATIS
 119.925



NOTE: RADAR required.
 NOTE: RNAV 1.
 NOTE: DME/DME/IRU or GPS required.
 NOTE: Aircraft departing the Oklahoma City Terminal area file and expect the AIRRE enroute transition.

VERTICAL NAVIGATION
PLANNING INFORMATION
 TURBOJETS: Expect 8000
 PROPS: Expect 6000 or 7000

NOTE: Chart not to scale.

ARRIVAL ROUTE DESCRIPTION
AIRRE TRANSITION (AIRRE.SLANT3): (For traffic filing FL190 and below.)
AXEE TRANSITION (AXEE.SLANT3): (For aircraft filing FL230 and below.)
CAMAL TRANSITION (CAMAL.SLANT3)
DIRRK TRANSITION (DIRRK.SLANT3)
HITUG TRANSITION (HITUG.SLANT3)
JRHED TRANSITION (JRHE.SLANT3): (ATC assigned only.)
KLAWW TRANSITION (KLAWW.SLANT3)
RRONY TRANSITION (RRONY.SLANT3): (For aircraft filing FL230 and below.)

From FINGR on track 227° to SLANT, then on track 230°.
 Expect RADAR vectors to final approach course.

SC-2, 22 FEB 2024 to 21 MAR 2024

SC-2, 22 FEB 2024 to 21 MAR 2024

DALLAS, TEXAS

SWWAY FOUR ARRIVAL (RNAV)
 (KNEAD.SWWAY4) 26MAY16

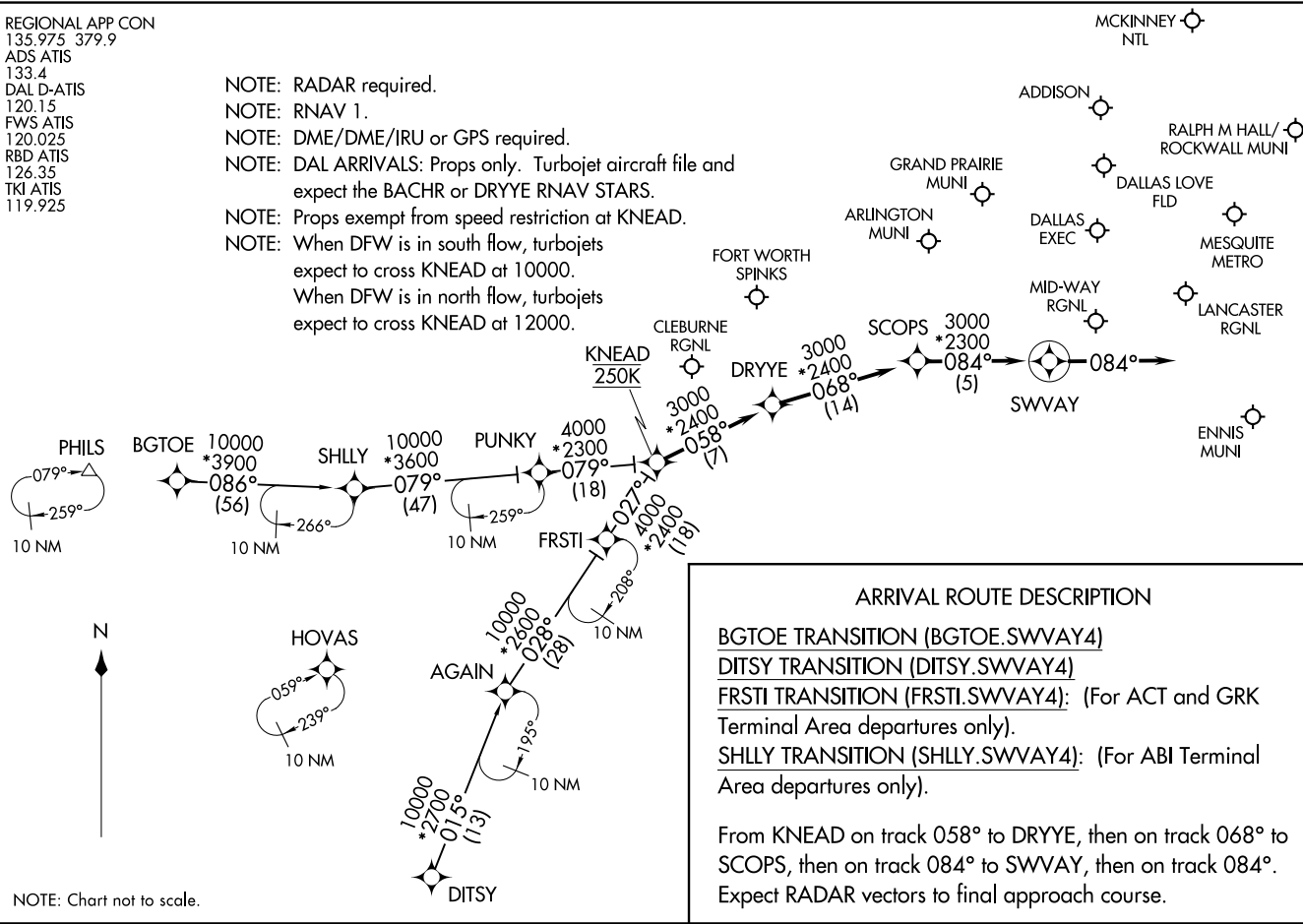
(KNEAD.SWWAY4) 23222
 SWWAY FOUR ARRIVAL (RNAV)

AL-768 (FAA)

DALLAS, TEXAS

REGIONAL APP CON
 135.975 379.9
 ADS ATIS
 133.4
 DAL D-ATIS
 120.15
 FWS ATIS
 120.025
 RBD ATIS
 126.35
 TKI ATIS
 119.925

- NOTE: RADAR required.
- NOTE: RNAV 1.
- NOTE: DME/DME/IRU or GPS required.
- NOTE: DAL ARRIVALS: Props only. Turbojet aircraft file and expect the BACHR or DRYYE RNAV STARS.
- NOTE: Props exempt from speed restriction at KNEAD.
- NOTE: When DFW is in south flow, turbojets expect to cross KNEAD at 10000.
- NOTE: When DFW is in north flow, turbojets expect to cross KNEAD at 12000.



NOTE: Chart not to scale.

DALLAS, TEXAS

ARRIVAL ROUTE DESCRIPTION

ALEXANDRIA TRANSITION (AEX.DODJE6): From over AEX VORTAC on AEX R-291 to NOBBL, then on FZT R-096 to FZT VOR/DME, then on FZT R-275 and CQY R-095 to CQY VORTAC, then on CQY R-282 to DODJE. Thence

CEDAR CREEK TRANSITION (CGY.DODJE6): From over CQY VORTAC on CQY R-282 to DODJE. Thence. . . .

CENTEX TRANSITION (CWK.DODJE6): From over CWK VORTAC on CWK R-040 to NAVYS, then on CQY R-180 to ALLMO, then on FUZ R-134 to DODJE. Thence

ELM GROVE TRANSITION (EMG.DODJE6): From over EMG VORTAC on EMG R-264 and GGG R-084 to GGG VORTAC, then on GGG R-253 and CQY R-073 to CAPTI, then on CQY R-073 to CQY VORTAC, then on CQY R-282 to DODJE. Thence

GREGG COUNTY TRANSITION (GGG.DODJE6): From over GGG VORTAC on GGG R-253 and CQY R-073 to CAPTI, then on CQY R-073 to CQY VORTAC, then on CQY R-282 to DODJE. Thence

HERRI TRANSITION (HERRI.DODJE6): From over HERRI on FZT R-101 to FZT VOR/DME, then on FZT R-275 and CQY R-095 to CQY VORTAC, then on CQY R-282 to DODJE. Thence

HUMBLE TRANSITION (IAH.DODJE6): From over IAH VORTAC on IAH R-358 to GIFFA, then on CQY R-128 to CQY VORTAC, then on CQY R-282 to DODJE. Thence

LEONA TRANSITION (LOA.DODJE6): From over LOA VORTAC on LOA R-341 to NARCS, then on FUZ R-134 to DODJE. Thence

MAGNOLIA TRANSITION (MHZ.DODJE6): From over MHZ VORTAC on MHZ R-274 and MLU R-089 to MLU VORTAC, then on MLU R-262 and EMG R-078 to EMG VORTAC, then on EMG R-264 and GGG R-084 to GGG VORTAC, then on GGG R-253 and CQY R-073 to CAPTI, then on CQY R-073 to CQY VORTAC, then on CQY R-282 to DODJE. Thence

MONROE TRANSITION (MLU.DODJE6): From over MLU VORTAC on MLU R-262 and EMG R-078 to EMG VORTAC, then on EMG R-264 and GGG R-084 to GGG VORTAC, then on GGG R-253 and CQY R-073 to CAPTI, then on CQY R-073 to CQY VORTAC, then on CQY R-282 to DODJE. Thence

NAVYS TRANSITION (NAVYS.DODJE6): From over NAVYS on CQY R-180 to ALLMO, then on FUZ R-134 to DODJE. Thence

SIDON TRANSITION (SQS.DODJE6): From over SQS VORTAC on SQS R-235 and MLU R-054 to MLU VORTAC, then on MLU R-262 and EMG R-078 to EMG VORTAC, then on EMG R-264 and GGG R-084 to GGG VORTAC, then on GGG R-253 and CQY R-073 to CAPTI, then on CQY R-073 to CQY VORTAC, then on CQY R-282 to DODJE. Thence

WACO TRANSITION (ACT.DODJE6): From over ACT VORTAC on ACT R-050 and CQY R-234 to THING, then on FUZ R-134 to DODJE. Thence

. . . . from over DODJE on FUZ R-134 to CABBYP or ADEMS (when directed by ATC).
Depart CABBYP heading 280°. Expect RADAR vectors to final approach course.
Depart ADEMS heading 265°. Expect RADAR vectors to final approach course.

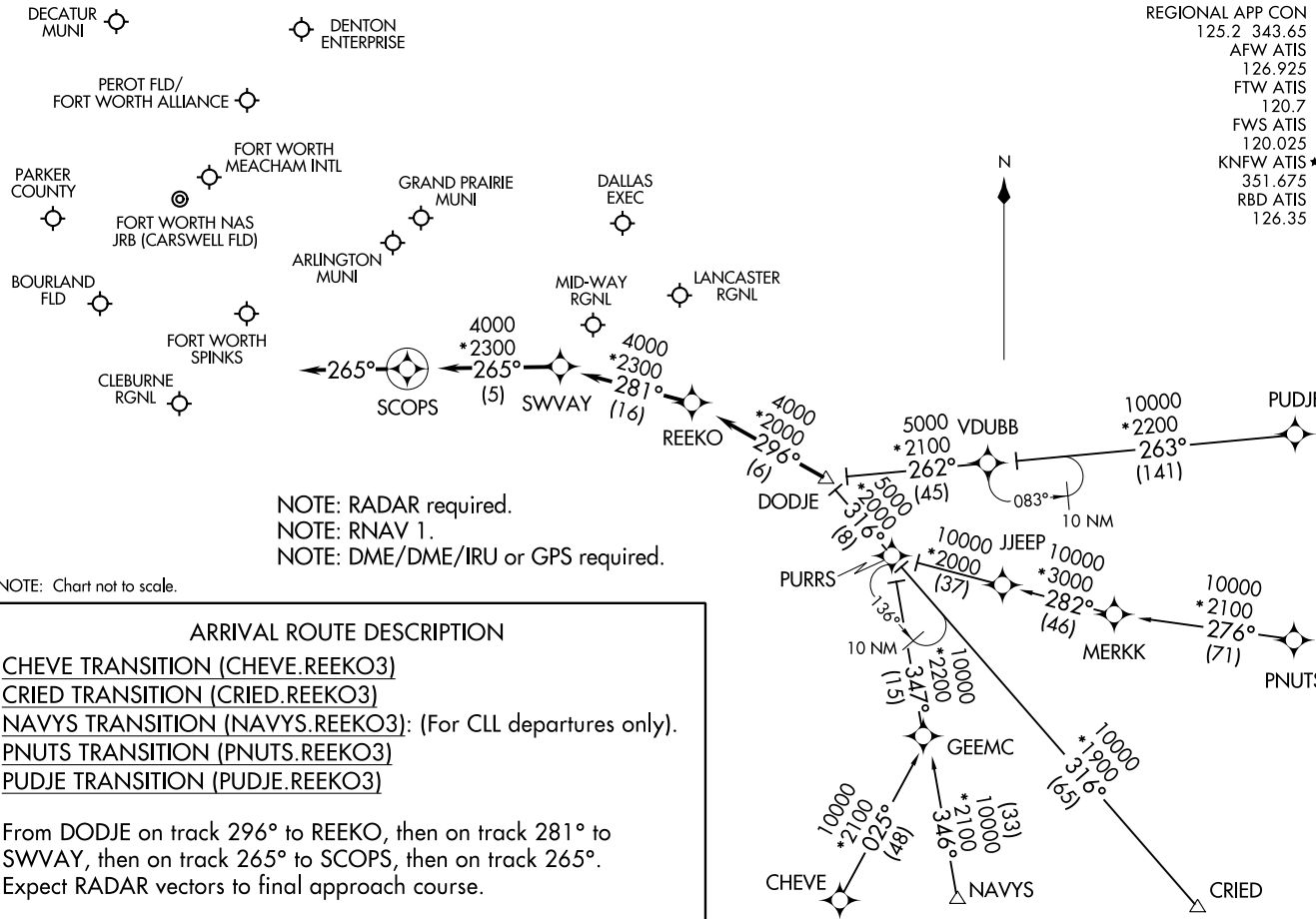
REEKO THREE ARRIVAL (RNAV)
(DODJE.REEK03) 26MAY16

REEKO THREE ARRIVAL (RNAV)
(DODJE.REEK03) 23Z22

AL-6918 (FAA)

FORT WORTH, TEXAS

REGIONAL APP CON
 125.2 343.65
 AFW ATIS
 126.925
 FTW ATIS
 120.7
 FWS ATIS
 120.025
 KNFW ATIS*
 351.675
 RBD ATIS
 126.35



NOTE: RADAR required.
 NOTE: RNAV 1.
 NOTE: DME/DME/IRU or GPS required.

NOTE: Chart not to scale.

ARRIVAL ROUTE DESCRIPTION

- CHEVE TRANSITION (CHEVE.REEK03)
- CRIED TRANSITION (CRIED.REEK03)
- NAVYS TRANSITION (NAVYS.REEK03): (For CLL departures only).
- PNTS TRANSITION (PNTS.REEK03)
- PUDJE TRANSITION (PUDJE.REEK03)

From DODJE on track 296° to REEKO, then on track 281° to SWVAY, then on track 265° to SCOPS, then on track 265°.
 Expect RADAR vectors to final approach course.

FORT WORTH, TEXAS