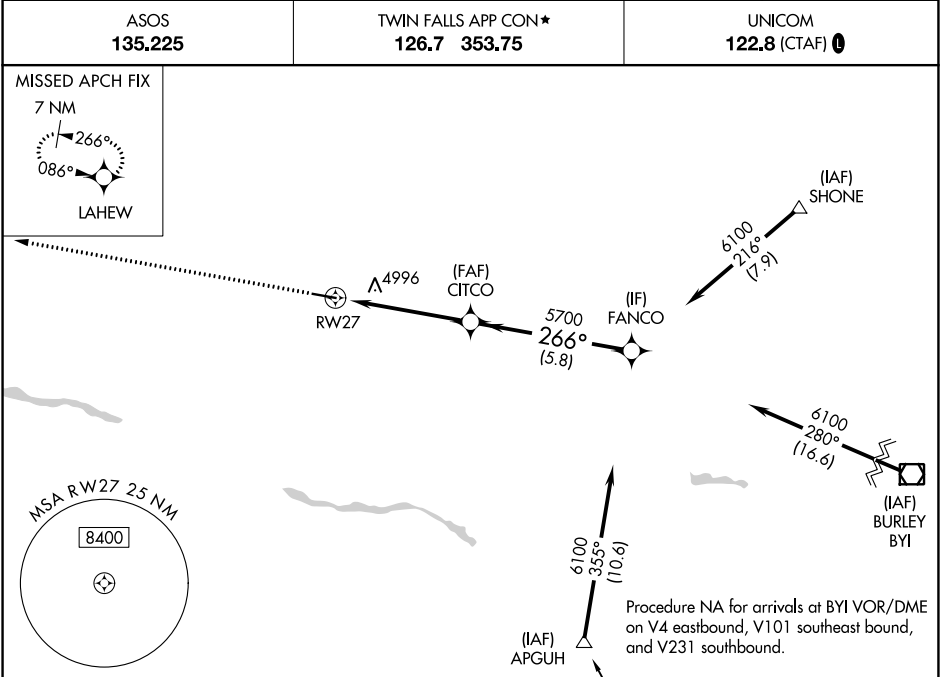


WAAS CH 90514 W27A	APP CRS 266°	Rwy Idg TDZE Apt Elev	5002 4053 4053
--	------------------------	-----------------------------	---

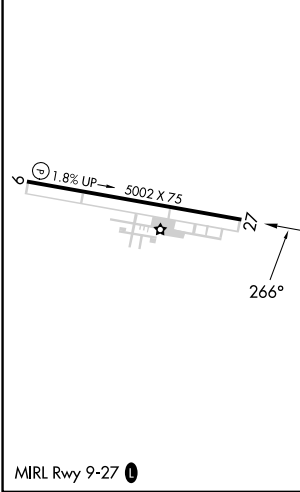
RNAV (GPS) RWY 27

JEROME COUNTY (JER)

RNP APCH.	<p>▼ Circling NA north of Rwy 9 and 27. ▲ Rwy 27 helicopter visibility reduction below ¾ SM NA.</p>	MISSED APPROACH: Climb to 6500 direct LAHEW and hold.
ASOS 135.225		TWIN FALLS APP CON* 126.7 353.75

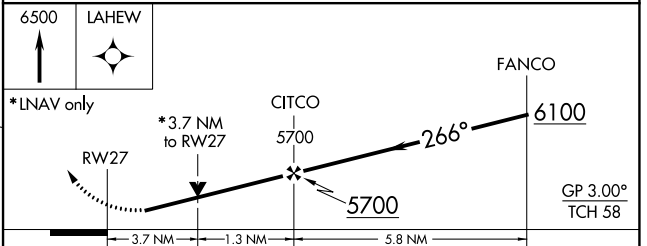


ELEV 4053	TDZE 4053
-----------	-----------



Procedure NA for arrivals at DRYAD on V484 southeast bound.

Procedure NA for arrivals at BYI VOR/DME on V4 eastbound, V101 southeast bound, and V231 southbound.



CATEGORY	A	B	C	D
LPV DA	4403-1		350 (400-1)	
LNAV MDA	5300-1¼ 1247 (1300-1¼)	5300-1½ 1247 (1300-1½)	5300-3 1247 (1300-3)	
C CIRCLING	5300-1¼ 1247 (1300-1¼)	5300-1½ 1247 (1300-1½)	5300-3 1247 (1300-3)	

NW-1, 22 FEB 2024 to 21 MAR 2024

NW-1, 22 FEB 2024 to 21 MAR 2024

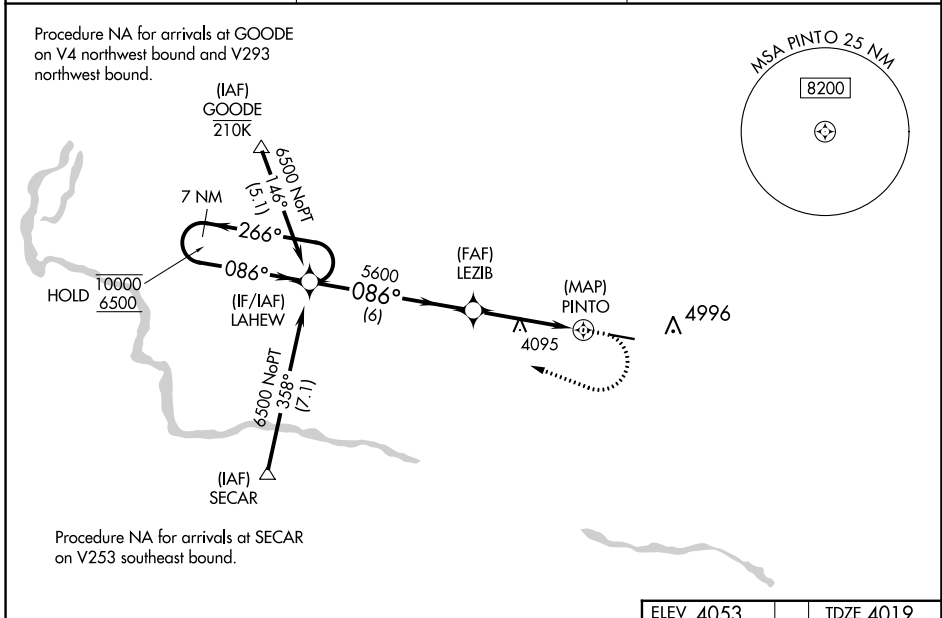
WAAS CH 90144 W09A	APP CRS 086°	Rwy Idg TDZE Apt Elev	5002 4019 4053
--	------------------------	-----------------------------	---

RNAV (GPS) RWY 9

JEROME COUNTY (JER)

RNP APCH.	MISSED APPROACH: (Do not exceed 185K until LAHEW) Climb to 4900 then climbing right turn to 6500 direct LAHEW and hold. # Missed approach requires minimum climb of 300 feet per NM to 5200.
<p>▼</p> <p>▲</p> <p>For uncompensated Baro-VNAV systems, LNAV/VNAV NA below -16°C or above 54°C. Circling NA north of Rwy 9-27.</p>	

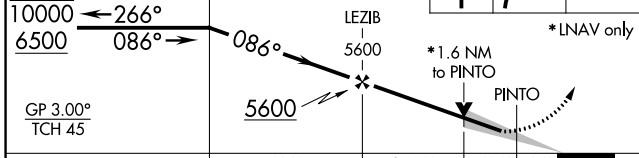
ASOS 135.225	TWIN FALLS APP CON★ 126.7 353.75	UNICOM 122.8 (CTAF) 0
------------------------	--	---------------------------------



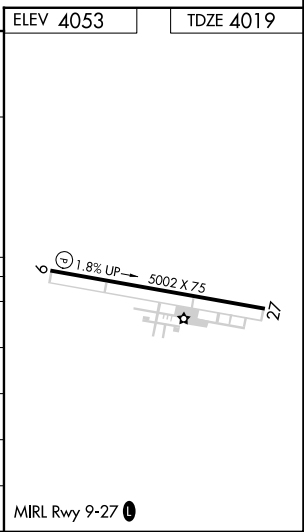
NW-1, 22 FEB 2024 to 21 MAR 2024

NW-1, 22 FEB 2024 to 21 MAR 2024

7 NM Holding Pattern	VGSI and RNAV glidepath not coincident (VGSI Angle 3.00/TCH 40).	4900	6500	LAHEW
----------------------	--	------	------	-------



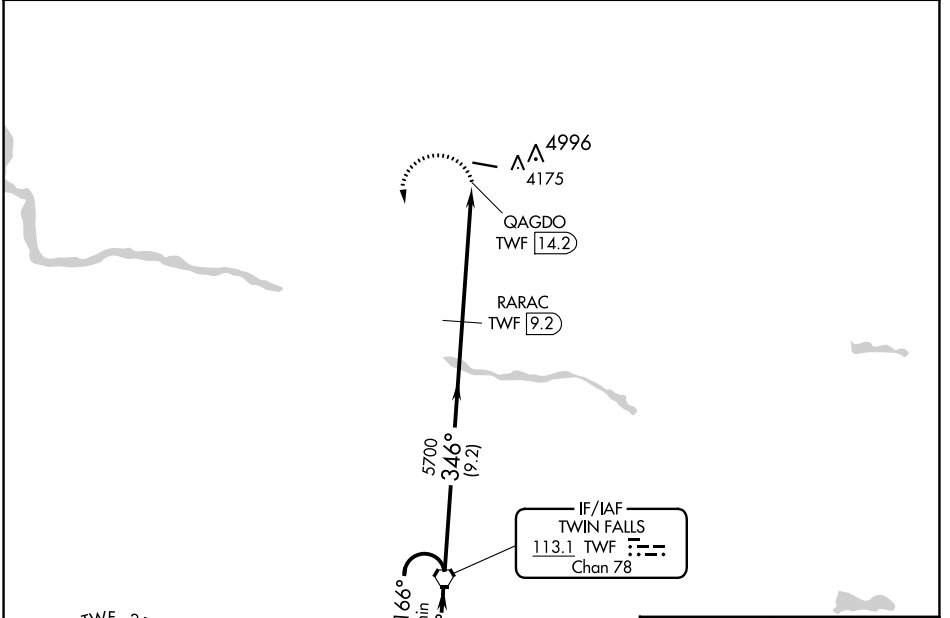
CATEGORY	A	B	C	D
LPV DA #		4544-1½	525 (500-1½)	
LPV DA		4624-1¾	605 (600-1¾)	
LNAV/VNAV DA		4674-1⅞	655 (700-1⅞)	
LNAV MDA	4820-1 801 (800-1)	4820-1¼ 801 (800-1¼)	4820-2½	801 (800-2½)
CIRCLING	4820-1 767 (800-1)	4820-1¼ 767 (800-1¼)	4820-2½	767 (800-2½)



VORTAC TWF 113.1 Chan 78	APP CRS 346°	Rwy Idg TDZE Apt Elev	N/A N/A 4053
--	------------------------	-----------------------------	---

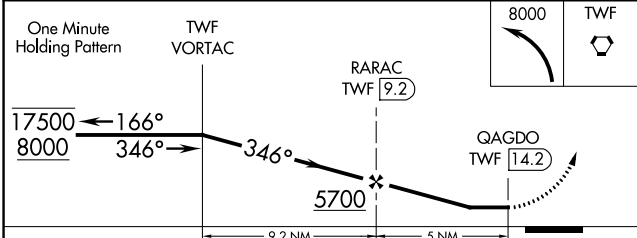
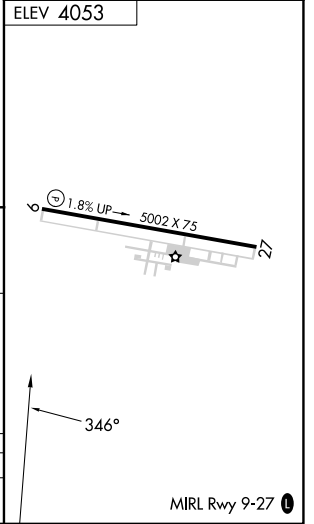
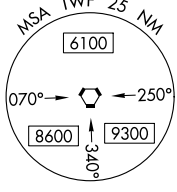
VOR-A
JEROME COUNTY (JER)

DME required.		MISSED APPROACH: Climbing left turn to 8000 direct TWF VORTAC and hold, continue climb-in-hold to 8000.
▽ ▲	Circling NA north of Rwy 9-27.	
ASOS 135,225	TWIN FALLS APP CON* 126.7 353.75	UNICOM 122.8 (CTAF) 0



NW-1, 22 FEB 2024 to 21 MAR 2024

NW-1, 22 FEB 2024 to 21 MAR 2024



CATEGORY	A	B	C	D
C CIRCLING	4480-1 427 (500-1)	4580-1 527 (600-1)	4580-1½ 527 (600-1½)	4620-2 567 (600-2)

MIRL Rwy 9-27 0