

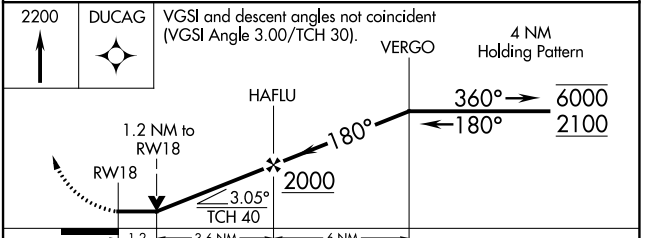
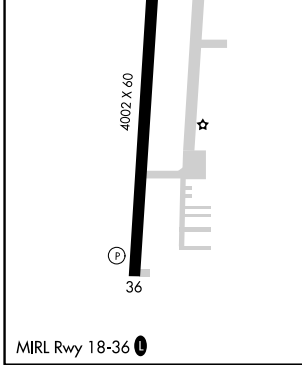
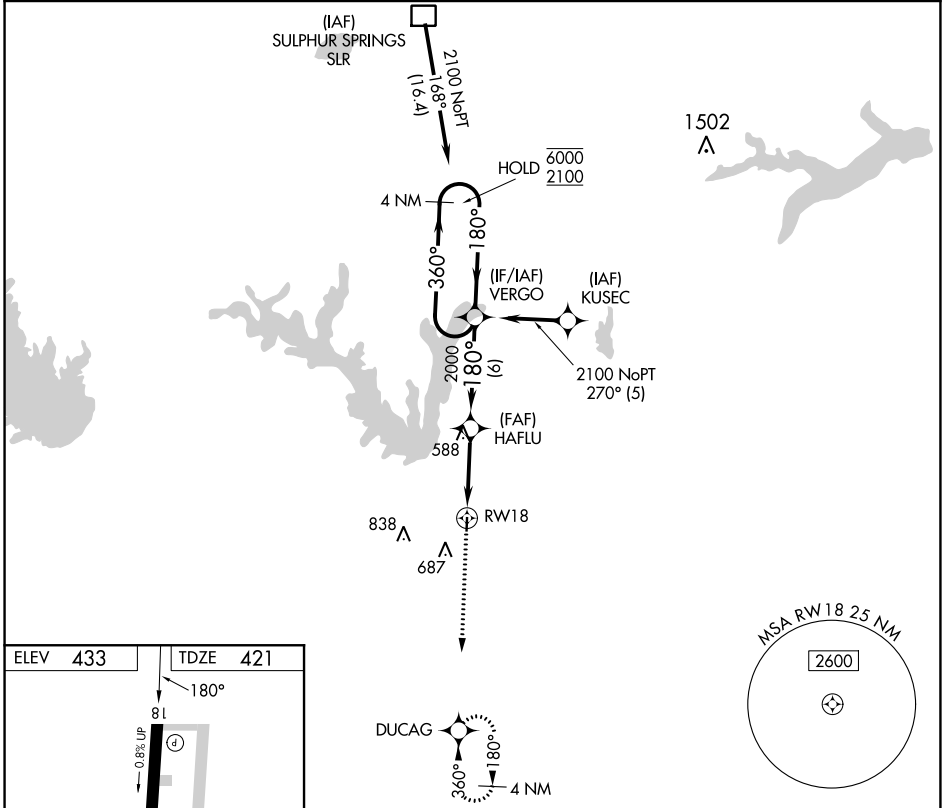
APP CRS	Rwy Idg	<b>4002</b>
<b>180°</b>	TDZE	<b>421</b>
	Apt Elev	<b>433</b>

# RNAV (GPS) RWY 18

WOOD COUNTY/COLLINS FLD (JDD)

RNP APCH - GPS.	MISSED APPROACH: Climb to 2200 direct DUCAG and hold.
<p>⚠ Circling Rwy 36 NA at night.</p> <p>⚠ Rwy 18 helicopter visibility reduction below ¾ SM NA.</p>	

AWOS-3 <b>118.9</b>	LONGVIEW APP CON ★ <b>128.75 379.15</b>	UNICOM <b>122.8 (CTAF) 0</b>
------------------------	--	---------------------------------



CATEGORY	A	B	C	D
LNAV MDA	820-1	399 (400-1)	820-1 1/8 399 (400-1 1/8)	NA
CIRCLING	940-1 507 (600-1)	1000-1 567 (600-1)	1000-1 1/2 567 (600-1 1/2)	NA

SC-2, 22 FEB 2024 to 21 MAR 2024

SC-2, 22 FEB 2024 to 21 MAR 2024

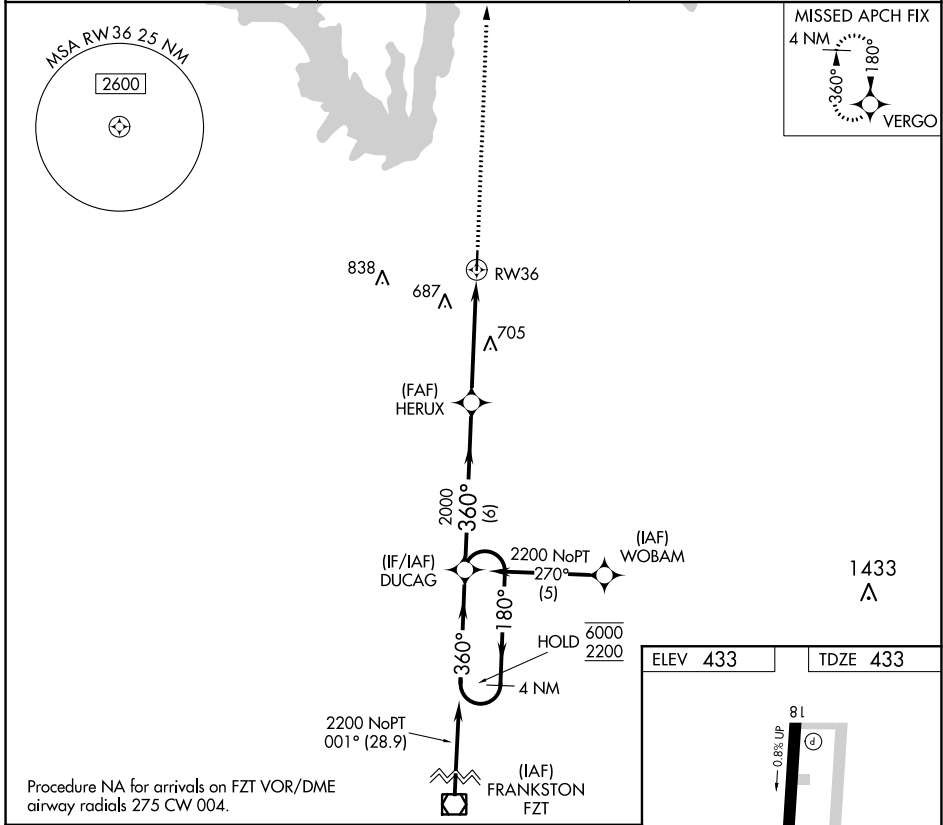
APP CRS	Rwy Idg	<b>4002</b>
<b>360°</b>	TDZE	<b>433</b>
	Apt Elev	<b>433</b>

# RNAV (GPS) RWY 36

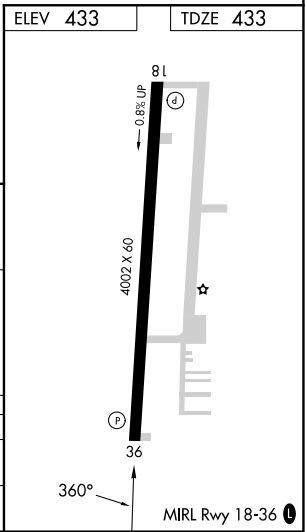
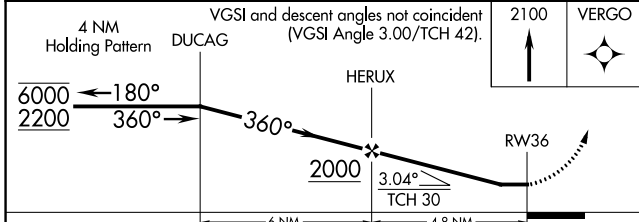
WOOD COUNTY/COLLINS FLD (JDD)

RNP APCH.	MISSED APPROACH: Climb to 2100 direct VERGO and hold.
<p><b>▼</b> Rwy 36 helicopter visibility reduction below 1 SM NA.</p> <p><b>▲</b> Straight-in and Circling Rwy 36 NA at night.</p>	

AWOS-3 <b>118.9</b>	LONGVIEW APP CON ★ <b>128.75 379.15</b>	UNICOM <b>122.8 (CTAF) 0</b>
------------------------	--	---------------------------------



Procedure NA for arrivals on FZT VOR/DME airway radials 275 CW 004.



CATEGORY	A	B	C	D
RNAV MDA	960-1	527 (600-1)	960-1½ 527 (600-1½)	NA
CIRCLING	960-1 527 (600-1)	1000-1 567 (600-1)	1000-1½ 567 (600-1½)	NA

SC-2, 22 FEB 2024 to 21 MAR 2024

SC-2, 22 FEB 2024 to 21 MAR 2024