

APP CRS	Rwy Idg	<b>3397</b>
<b>250°</b>	TDZE	<b>70</b>
	Apt Elev	<b>70</b>

# RNAV (GPS) RWY 25

WISCASSET (IWI)

RNP APCH.

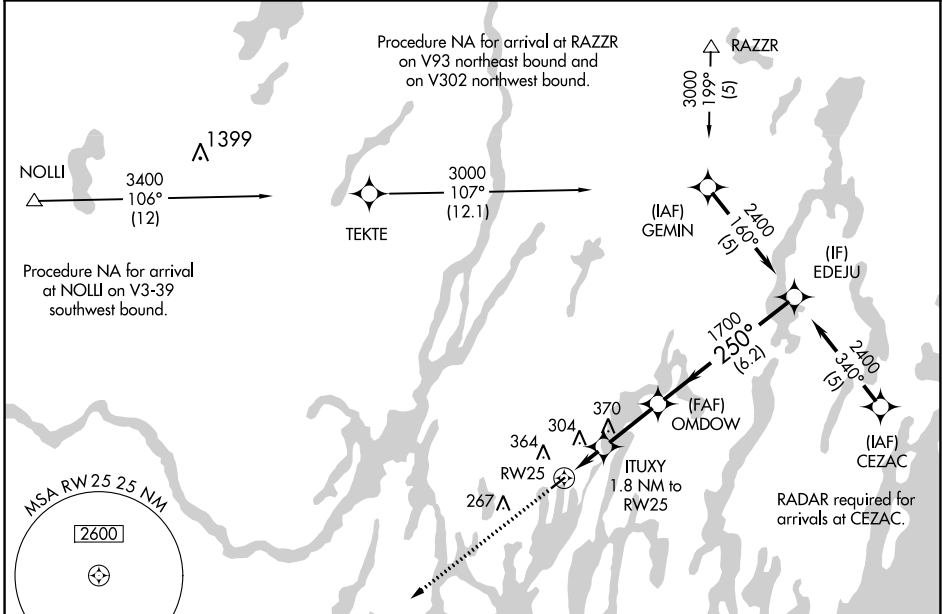
**Procedure NA at night. Rwy 25 helicopter visibility reduction below 1 SM NA. When local altimeter setting not received use Rockland altimeter setting and increase all MDA 80 feet.**

**MISSED APPROACH:** Climb to 3000 direct BAZQE and hold.

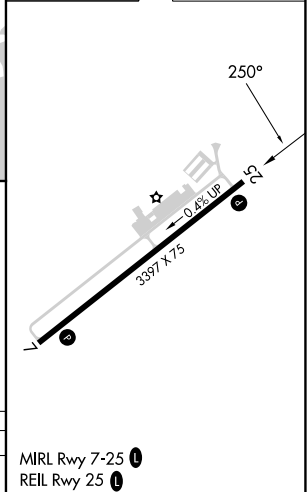
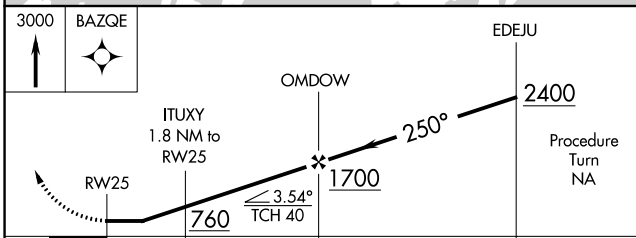
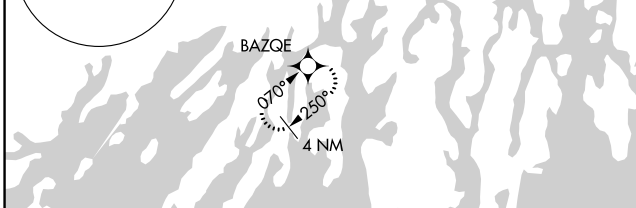
ASOS
<b>135.725</b>

PORTLAND APP CON★
<b>119.75 269.35</b> (112°-292°)
<b>120.4 299.2</b> (293°-111°)

UNICOM
<b>122.8 (CTAF)</b>



ELEV 70	TDZE 67
---------	---------



CATEGORY	A	B	C	D
LNAV MDA	580-1	513 (600-1)	NA	

NE-1, 22 FEB 2024 to 21 MAR 2024

NE-1, 22 FEB 2024 to 21 MAR 2024

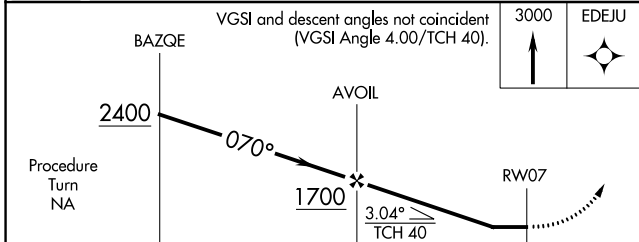
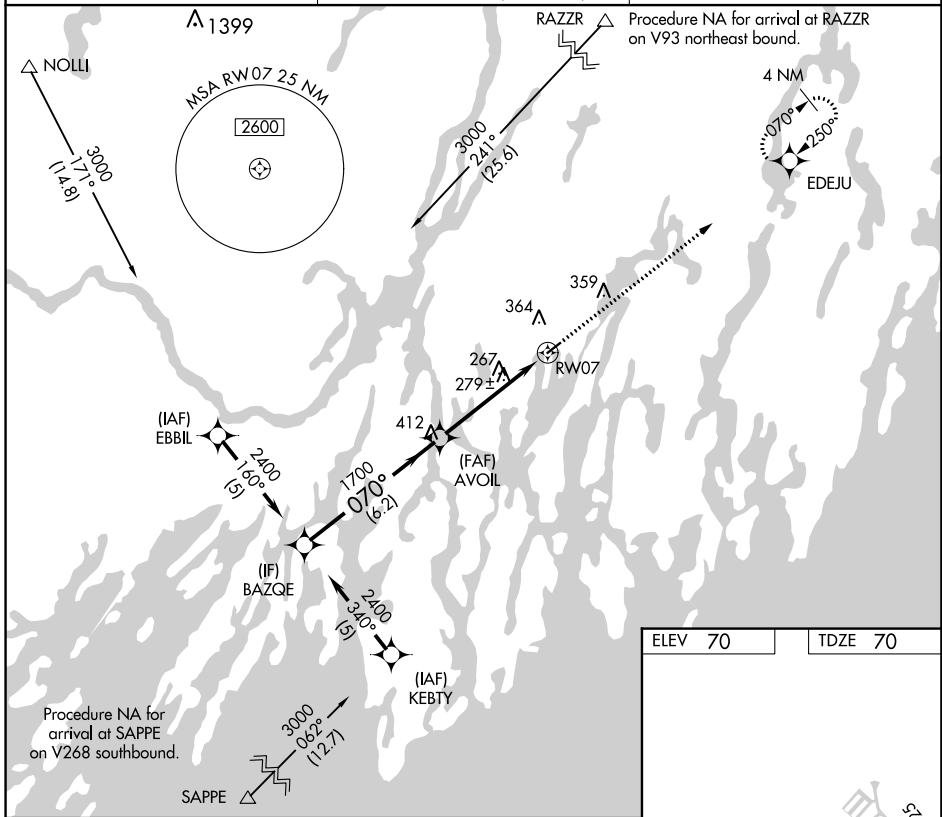
APP CRS	Rwy Idg	<b>3397</b>
<b>070°</b>	TDZE	<b>70</b>
	Apt Elev	<b>70</b>

# RNAV (GPS) RWY 7

WISCASSET (IWI)

RNP APCH.	<p>Procedure NA at night. Rwy 7 helicopter visibility reduction below 1 SM NA. When local altimeter setting not received use Rockland altimeter setting and increase all MDA 80 feet.</p>	<p>MISSED APPROACH: Climb to 3000 direct EDEJU and hold.</p>
-----------	---	--

ASOS <b>135.725</b>	PORTLAND APP CON★ <b>119.75 269.35</b> (112° -292°) <b>120.4 299.2</b> (293°-111°)	UNICOM <b>122.8</b> (CTAF) <b>0</b>
------------------------	--	--



ELEV 70	TDZE 70
---------	---------

MIRL Rwy 7-25 **0**  
REL Rwy 25 **0**

NE-1, 22 FEB 2024 to 21 MAR 2024

NE-1, 22 FEB 2024 to 21 MAR 2024

CATEGORY	A	B	C	D
LNAV MDA	560-1	490 (500-1)		NA