

SHREK TWO ARRIVAL (RNAV)

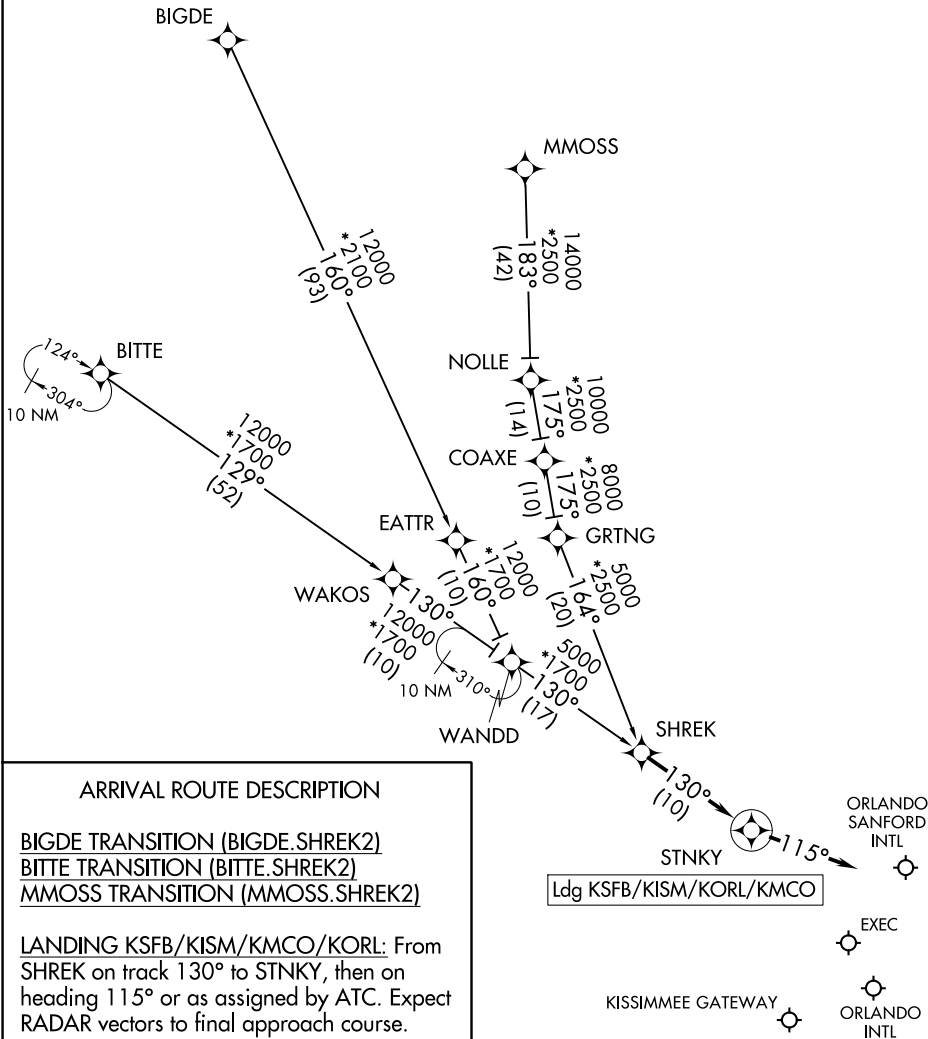
ORLANDO, FLORIDA

RNAV 1 - DME/DME/IRU or GPS.

RADAR required.

ORLANDO APP CON 134.05 339.8
 JACKSONVILLE APP CON 128.675 263.05
 ISM ATIS 128.775
 MCO D-ATIS ARR 121.25
 ORL ATIS 127.25
 SFB ATIS 125.975

NOTE: Jets landing ISM and ORL, ATC assigned only.
 NOTE: Turboprops and props only landing MCO.
 NOTE: Landing all airports, expect RADAR vectors after STINKY.



SE-3, 22 FEB 2024 to 21 MAR 2024

SE-3, 22 FEB 2024 to 21 MAR 2024

SHREK TWO ARRIVAL (RNAV)

(SHREK.SHREK2) 02DEC21

ORLANDO, FLORIDA

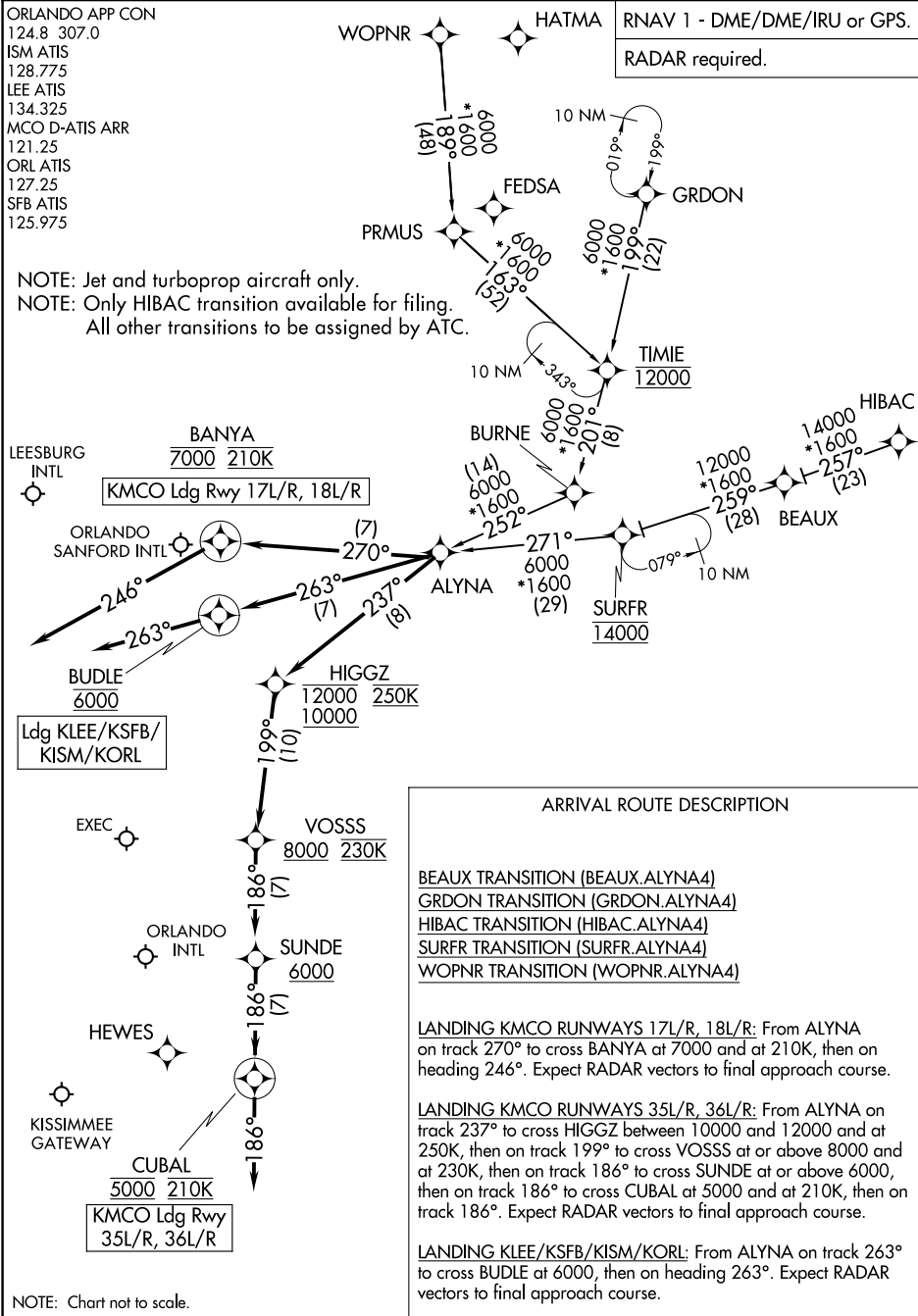
ALYNA FOUR ARRIVAL (RNAV)

ORLANDO, FLORIDA

ORLANDO APP CON
 124.8 307.0
 ISM ATIS
 128.775
 LEE ATIS
 134.325
 MCO D-ATIS ARR
 121.25
 ORL ATIS
 127.25
 SFB ATIS
 125.975

RNAV 1 - DME/DME/IRU or GPS.
 RADAR required.

NOTE: Jet and turboprop aircraft only.
 NOTE: Only HIBAC transition available for filing.
 All other transitions to be assigned by ATC.



NOTE: Chart not to scale.

ALYNA FOUR ARRIVAL (RNAV)

(ALYNA.ALYNA4) 25JAN24

ORLANDO, FLORIDA

SE-3, 22 FEB 2024 to 21 MAR 2024

SE-3, 22 FEB 2024 to 21 MAR 2024

BITHO SEVEN ARRIVAL

ORLANDO, FLORIDA

ORLANDO APP CON
 128.375 338.2
 ISM ATIS
 128.775
 KCOF ATIS
 119.175 273.5
 MLB ATIS
 132.55
 MCO D-ATIS ARR
 121.25
 TIX ATIS
 120.625

ORMOND BEACH
 112.6 OMN
 Chan 73
 N29° 18.20' - W81° 06.76'
 L-21-23-24, H-8

OCALA
 113.7 OCF
 Chan 84

ORLANDO
 112.2 ORL
 Chan 59

LAMMA
 N29° 00.87' - W81° 05.38'
TURBOJET VERTICAL NAVIGATION
PLANNING INFORMATION

Expect clearance to cross at 15000' landing Patrick SFB, Melbourne Orlando Intl, and Merritt Island.
 Expect clearance to cross at 12000' landing Orlando Intl, Kissimmee Gateway, Space Coast Rgnl, Cape Canaveral SFS Skid Strip, and Space Florida Launch and Landing.
 NOTE: Orlando Intl Landing South: Expect clearance to cross at 250K.

COZMO
 N28° 47.95' - W81° 04.36'
TURBOJET VERTICAL NAVIGATION
PLANNING INFORMATION

Expect clearance to cross at 10000' landing Orlando Intl Rwy 18.

BITHO
 N28° 37.86' - W81° 03.56'
TURBOJET VERTICAL NAVIGATION
PLANNING INFORMATION

Expect clearance to cross at 8000' landing Space Florida Launch and Landing Facility, Cape Canaveral SFS Skid Strip, Merritt Island, Patrick SFB, and Melbourne Orlando Intl.

ORLANDO INTL

KISSIMMEE GATEWAY

SPACE FLORIDA LAUNCH AND LANDING FACILITY

SPACE COAST RGNL

CAPE CANAVERAL SFS SKID STRIP

MERRITT ISLAND

PATRICK SFB

MELBOURNE ORLANDO INTL

NOTE: Chart not to scale.

ARRIVAL ROUTE DESCRIPTION

From over OMN VORTAC via OMN R-176 to BITHO INT. Expect RADAR vectors to final approach course after BITHO INT.

SE-3, 22 FEB 2024 to 21 MAR 2024

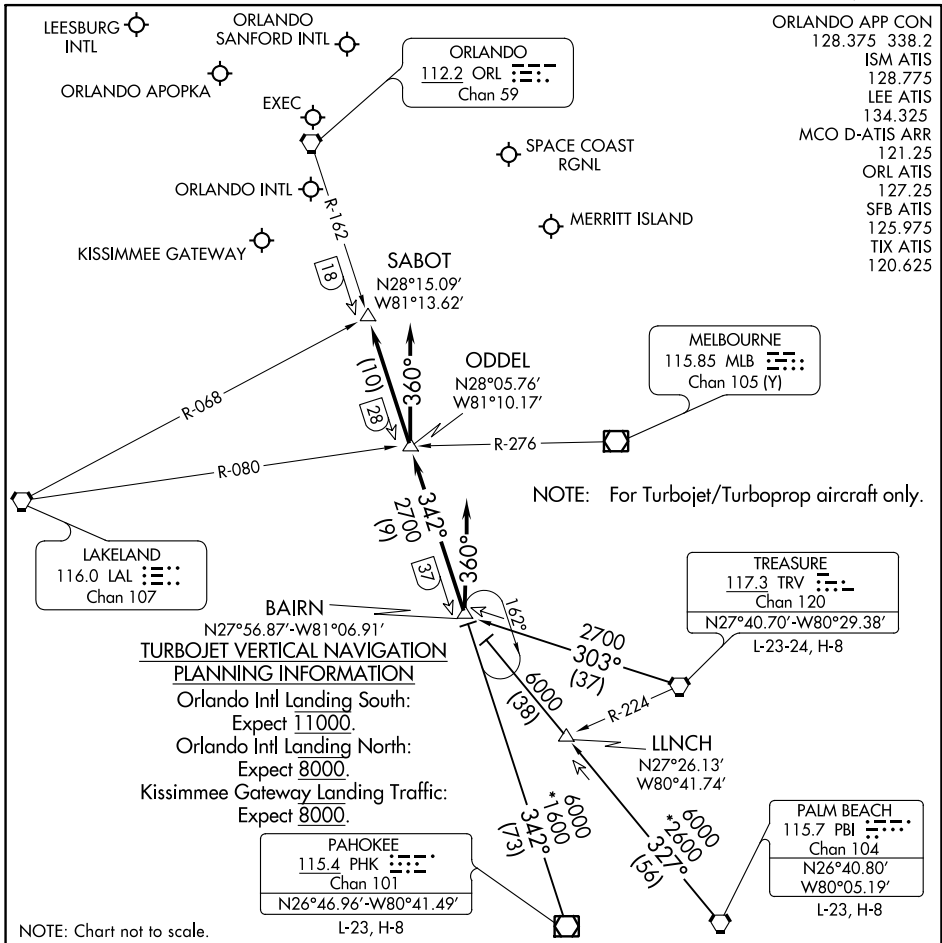
SE-3, 22 FEB 2024 to 21 MAR 2024

(BAIRN.GOOFY7) 23222

AL-571 (FAA)

GOOFY SEVEN ARRIVAL

ORLANDO, FLORIDA



SE-3, 22 FEB 2024 to 21 MAR 2024

SE-3, 22 FEB 2024 to 21 MAR 2024

ARRIVAL ROUTE DESCRIPTION

PAHOKEE TRANSITION (PHK.GOOFY7): From over PHK VOR/DME on PHK R-342 to BAIRN INT.

Thence . . .

PALM BEACH TRANSITION (PBI.GOOFY7): From over PBI VORTAC on PBI R-327 to BAIRN INT.

Thence . . .

TREASURE TRANSITION (TRV.GOOFY7): From over TRV VORTAC on TRV R-303 to BAIRN INT.

Thence . . .

ORLANDO INTL:

. . . Rwy 17/18: From over BAIRN INT on ORL VORTAC R-162 to ODDEL INT. Depart ODDEL INT heading 360° for vector to final approach course.

. . . Rwy 35/36: Depart BAIRN INT heading 360° for vector to final approach course.

LEESBURG INTL: . . . From over BAIRN INT on ORL VORTAC R-162 to SABOT INT. Expect RADAR vectors to the airport.

ALL OTHER AIRPORTS: . . . From over BAIRN INT on ORL VORTAC R-162 to SABOT INT.

Expect RADAR vectors to final approach course.

GOOFY SEVEN ARRIVAL

ORLANDO, FLORIDA

(BAIRN.GOOFY7) 27APR17

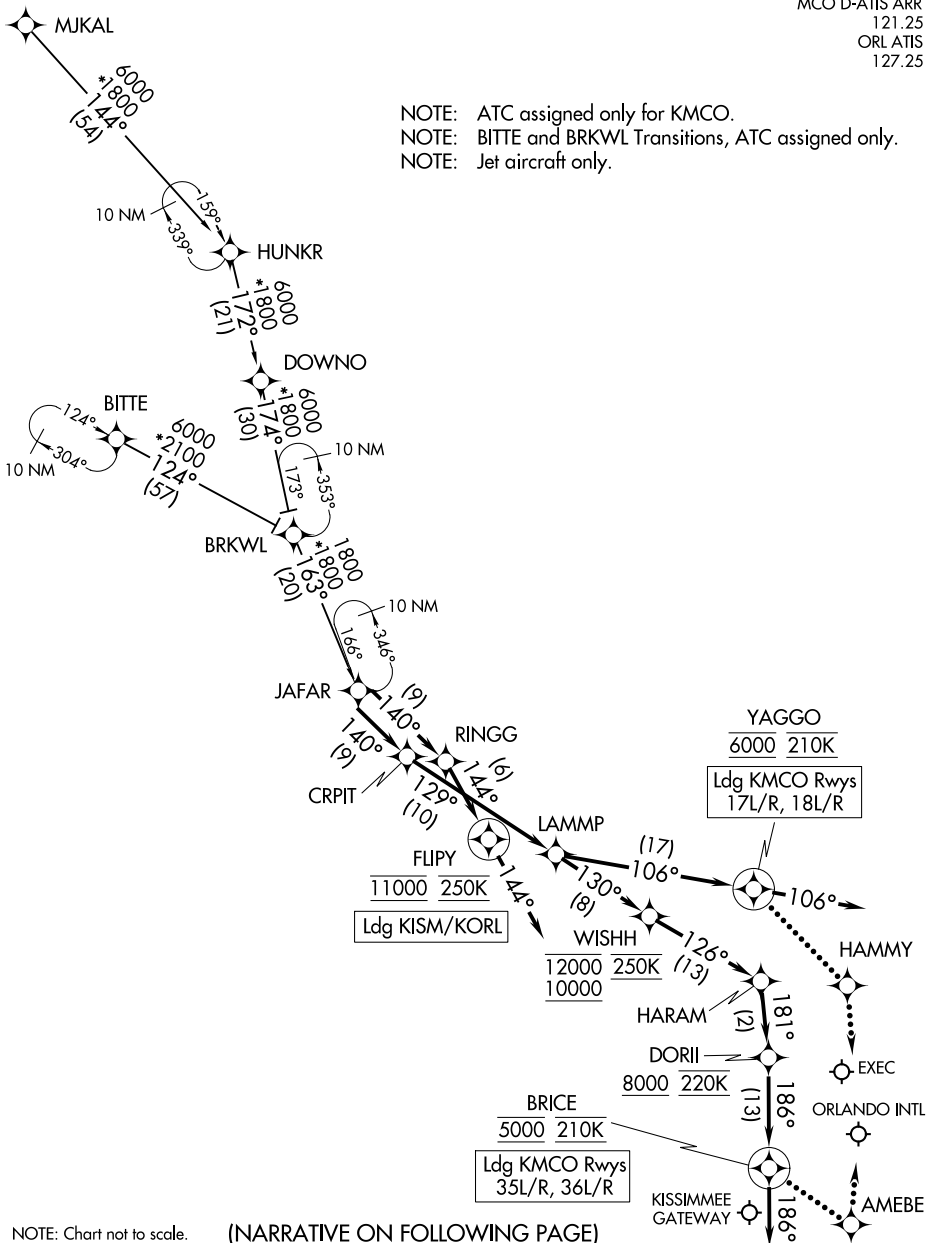
JAFAR THREE ARRIVAL (RNAV)

ORLANDO, FLORIDA

| |
|------------------------------|
| RNAV 1 - DME/DME/IRU or GPS. |
| RADAR required. |

ORLANDO APP CON
134.05 339.8
ISM ATIS
128.775
MCO D-ATIS ARR
121.25
ORLATIS
127.25

NOTE: ATC assigned only for KMCO.
NOTE: BITTE and BRKWL Transitions, ATC assigned only.
NOTE: Jet aircraft only.



NOTE: Chart not to scale. (NARRATIVE ON FOLLOWING PAGE)

JAFAR THREE ARRIVAL (RNAV)

ORLANDO, FLORIDA

SE-3, 22 FEB 2024 to 21 MAR 2024

SE-3, 22 FEB 2024 to 21 MAR 2024

ARRIVAL ROUTE DESCRIPTION

BITTE TRANSITION (BITTE.JAFAR3)
BRKWL TRANSITION (BRKWL.JAFAR3)
MJKAL TRANSITION (MJKAL.JAFAR3)

KMCO: From JAFAR on track 140° to CRPIT, then on track 129° to LAMMP.

LANDING KMCO RUNWAYS 17L/R, 18L/R: From LAMMP on track 106° to cross YAGGO at 6000 and at 210K, then on track 106°. Expect RADAR vectors to final approach course.

LANDING KMCO RUNWAYS 35L/R, 36L/R: From LAMMP on track 130° to cross WISHH between 10000 and 12000 and at 250K, then on track 126° to HARAM, then on track 181° to cross DORII at or above 8000 and at 220K, then on track 186° to cross BRICE at 5000 and at 210K, then on track 186°. Expect RADAR vectors to final approach course.

LANDING KISM/KORL: From JAFAR on track 140° to RINGG, then on track 144° to cross FLIPY at 11000 and at 250K, then on track 144°. Expect RADAR vectors to final approach course.

LOST COMMUNICATIONS

KMCO LANDING NORTH: Continue track to BRICE, then proceed direct AMEBE, intercept Rwy 36L final approach course, conduct approach.

KMCO LANDING SOUTH: Continue track to YAGGO, then proceed direct to HAMMY, intercept Rwy 18R final approach course, conduct approach.

SE-3, 22 FEB 2024 to 21 MAR 2024

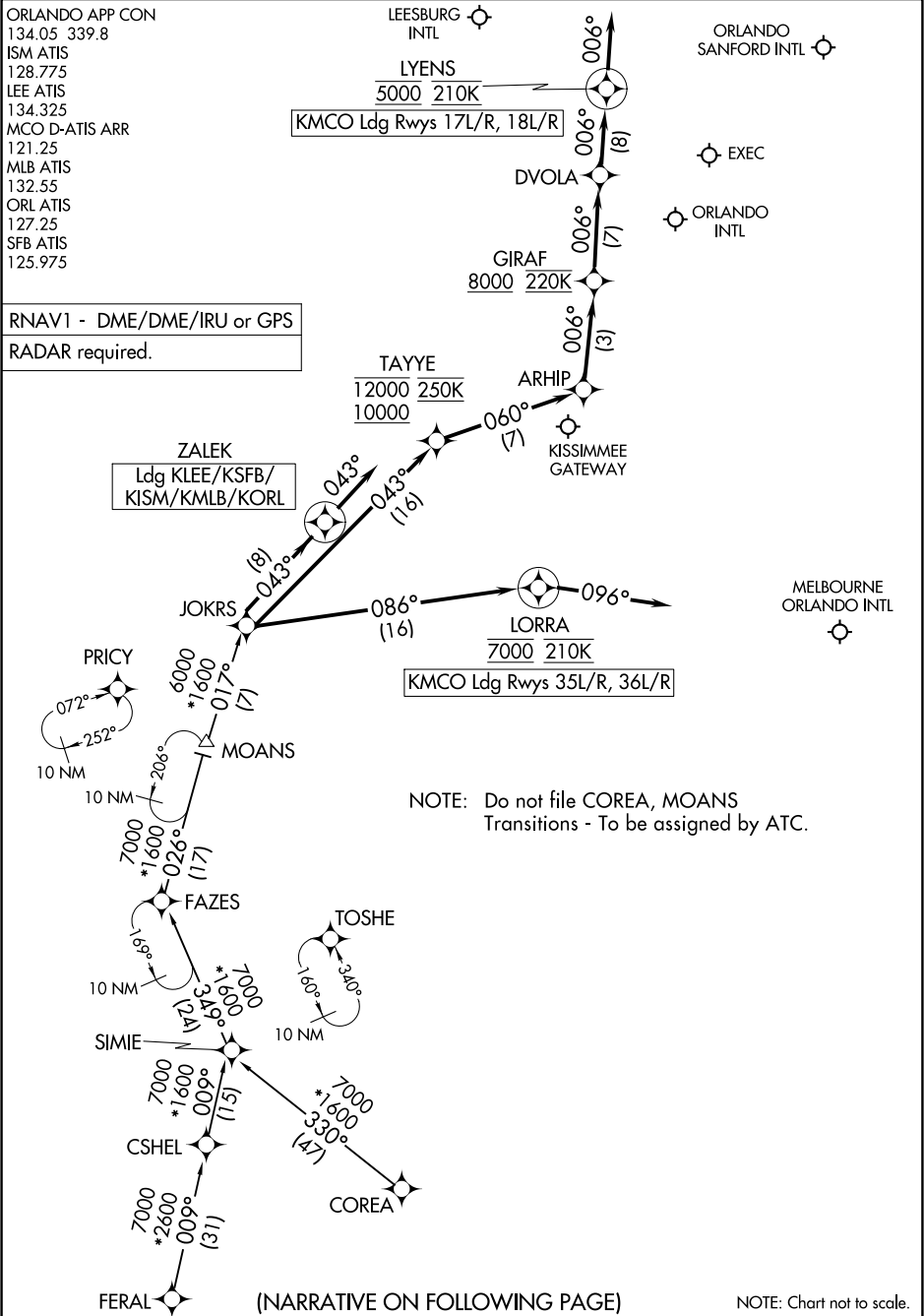
SE-3, 22 FEB 2024 to 21 MAR 2024

JOKRS THREE ARRIVAL (RNAV)

ORLANDO, FLORIDA

ORLANDO APP CON
 134.05 339.8
 ISM ATIS
 128.775
 LEE ATIS
 134.325
 MCO D-ATIS ARR
 121.25
 MLB ATIS
 132.55
 ORL ATIS
 127.25
 SFB ATIS
 125.975

RNAV1 - DME/DME/IRU or GPS
 RADAR required.



SE-3, 22 FEB 2024 to 21 MAR 2024

SE-3, 22 FEB 2024 to 21 MAR 2024

JOKRS THREE ARRIVAL (RNAV)

(JOKRS.JOKRS3) 19MAY22

ORLANDO, FLORIDA

ARRIVAL ROUTE DESCRIPTION

COREA TRANSITION (COREA.JOKRS3)

CSHEL TRANSITION (CSHEL.JOKRS3)

FAZES TRANSITION (FAZES.JOKRS3)

FERAL TRANSITION (FERAL.JOKRS3)

MOANS TRANSITION (MOANS.JOKRS3)

LANDING KMCO RUNWAYS 17L/R, 18L/R: From JOKRS on track 043° to cross TAYYE between 10000 and 12000 and at 250K, then on track 060° to ARHIP, then on track 006° to cross GIRAF at or above 8000 and at 220K, then on track 006° to DVOLA, then on track 006° to cross LYENS at 5000 and at 210K, then on track 006°. Expect RADAR vectors to final approach course.

LANDING KMCO RUNWAYS 35L/R, 36L/R: From JOKRS on track 086° to cross LORRA at 7000 and at 210K, then on heading 096°. Expect RADAR vectors to final approach course.

LANDING KLEE/KSFB/KISM/KMLB/KORL: From JOKRS on track 043° to ZALEK, then on heading 043°. Expect RADAR vectors to final approach course.

SE-3, 22 FEB 2024 to 21 MAR 2024

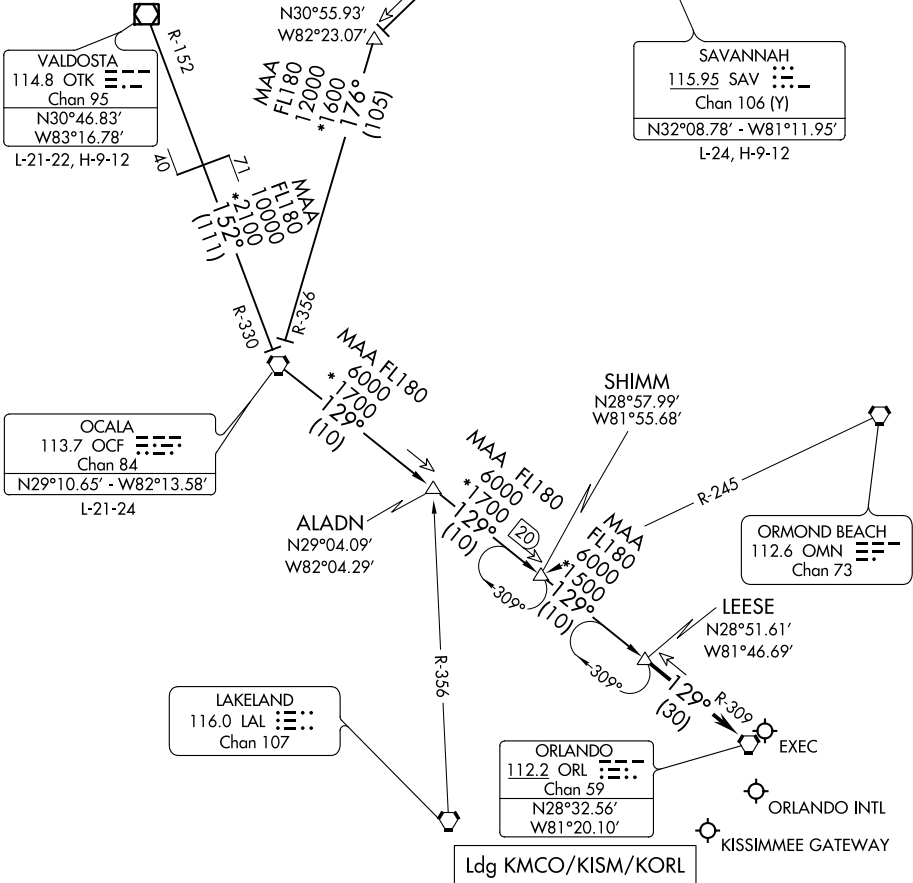
SE-3, 22 FEB 2024 to 21 MAR 2024

LEESE THREE ARRIVAL

ORLANDO, FLORIDA

JACKSONVILLE APP CON
128.675 263.05
ORLANDO APP CON
134.05 339.8
ISM ATIS
128.775
MCO D-ATIS ARR
121.25
ORL ATIS
127.25

NOTE: RADAR required
NOTE: DME required



NOTE: Chart not to scale.

LEESE THREE ARRIVAL

ORLANDO, FLORIDA

SE-3, 22 FEB 2024 to 21 MAR 2024

SE-3, 22 FEB 2024 to 21 MAR 2024

ARRIVAL ROUTE DESCRIPTION

OCALA TRANSITION (OCF.LEESE3): From over OCF VORTAC on OCF R-129 to LEESE. Thence

SAVANNAH TRANSITION (SAV.LEESE3): From over SAV VORTAC on SAV R-226 to SEMP, then on OCF R-356 to OCF VORTAC, then on OCF R-129 to LEESE. Thence

VALDOSTA TRANSITION (OTK.LEESE3): From over OTK VOR/DME on OTK R-152 and OCF R-330 to OCF VORTAC, then on OCF R-129 to LEESE. Thence

. . . . from LEESE on ORLANDO VORTAC ORL R-309 to ORL VORTAC.
Expect RADAR vectors to final approach course after LEESE.

SE-3, 22 FEB 2024 to 21 MAR 2024

SE-3, 22 FEB 2024 to 21 MAR 2024

ORLANDO APP CON
134.05 339.8
ISM ATIS
128.775
LEE ATIS
134.325
MCO D-ATIS ARR
121.25
ORL ATIS
127.25
SFB ATIS
125.975
TIX ATIS
120.625

OCALA
113.7 OCF
Chan 84

ORLANDO
112.2 ORL
Chan 59
N28°32.56'
W81°20.10'

ANDRO
N28°02.95' - W81°53.14'
TURBOJET VERTICAL NAVIGATION PLANNING INFORMATION

Orlando Intl Landing South: Expect clearance to cross at 13,000'.
Orlando Intl Landing North: Expect clearance to cross at 13,000' and 250 KTS.

MOANS
N27°54.83' - W81°44.91'
TURBOJET VERTICAL NAVIGATION PLANNING INFORMATION

Orlando Intl Landing South: Expect clearance to cross at 13,000'.
Orlando Intl Landing North: Expect clearance to cross at 10,000' and 250 KTS.

ST PETERSBURG
116.4 PIE
Chan 111
N27°54.47'
W82°41.06'
L-21-24, H-8

SYKES
N27°39.88'
W83°02.99'

GUMMY
N27°49.59'
W82°31.94'

LAKELAND
116.0 LAL
Chan 107
N27°59.17'
W82°00.83'

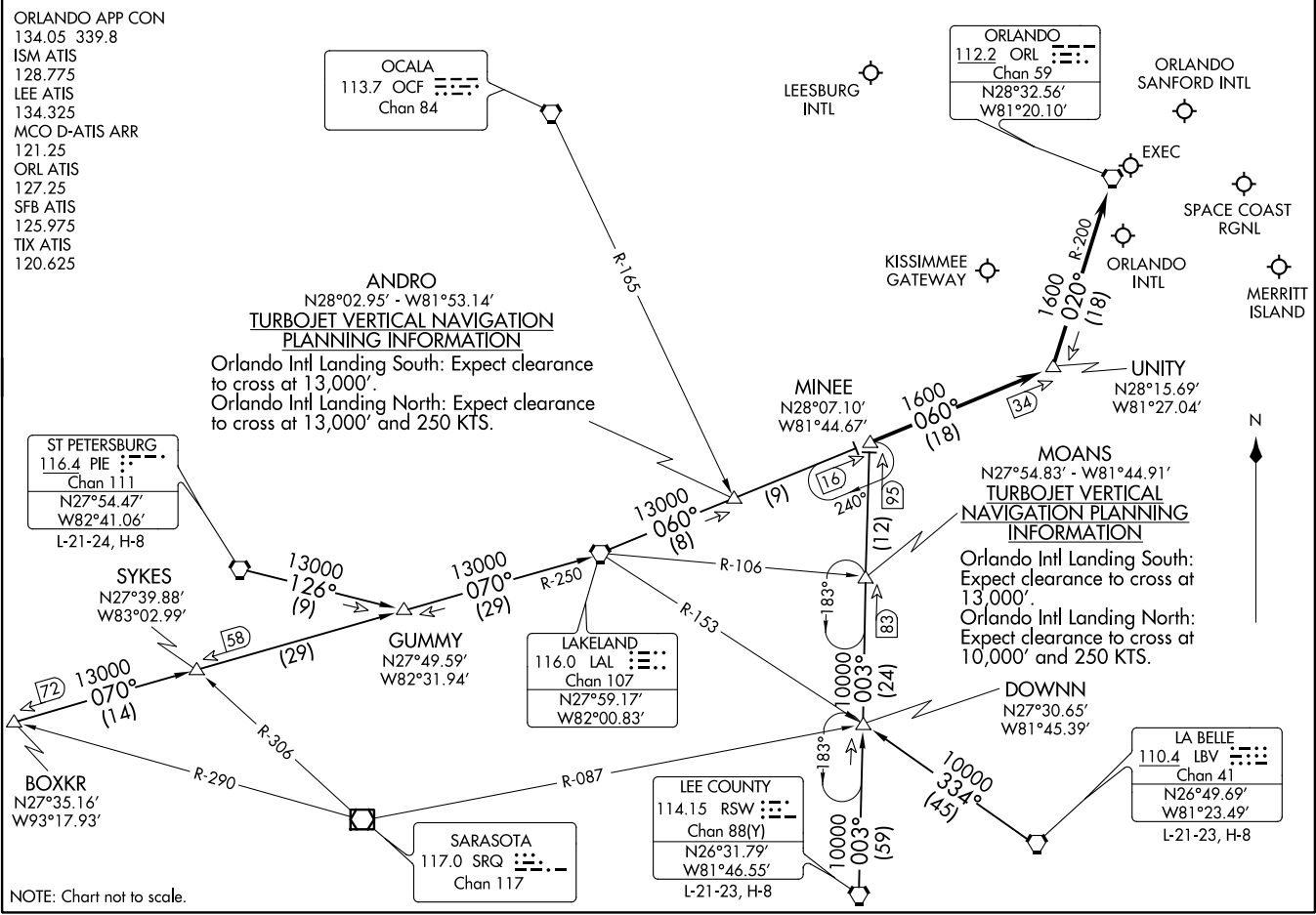
BOXKR
N27°35.16'
W93°17.93'

SARASOTA
117.0 SRQ
Chan 117

LEE COUNTY
114.15 RSW
Chan 88(Y)
N26°31.79'
W81°46.55'
L-21-23, H-8

LA BELLE
110.4 LBV
Chan 41
N26°49.69'
W81°23.49'
L-21-23, H-8

NOTE: Chart not to scale.



MINEE FIVE ARRIVAL (MINEE.MINEE5)

ORLANDO, FLORIDA

ARRIVAL ROUTE DESCRIPTION

BOXKR TRANSITION (BOXKR.MINEE5): From over BOXKR INT via LAL R-250 to LAL VORTAC, then via LAL R-060 to MINEE INT. Thence. . . .

LA BELLE TRANSITION (LBV.MINEE5): From over LBV VORTAC via LBV R-334 to DOWNN INT, then via RSW R-003 to MINEE INT. Thence. . . .

LEE COUNTY TRANSITION (RSW.MINEE5): From over RSW VORTAC via RSW R-003 to MINEE INT. Thence. . . .

ST. PETERSBURG TRANSITION (PIE.MINEE5): From over PIE VORTAC via PIE R-126 to GUMMY INT, then via LAL R-250 to LAL VORTAC, then via LAL R-060 to MINEE INT. Thence. . . .

. . . . From over MINEE INT via LAL R-060 to UNITY INT, then via ORL R-200 to ORL VORTAC.

LEESBURG INTL: Expect radar vectors to airport after UNITY INT.

ALL OTHER AIRPORTS: Expect radar vectors to final approach course after UNITY INT.

SE-3, 22 FEB 2024 to 21 MAR 2024

SE-3, 22 FEB 2024 to 21 MAR 2024

MINEE FIVE ARRIVAL (MINEE.MINEE5)

ORLANDO, FLORIDA

(PRIC3.PRIC3) 03NOV22

PRIC3 THREE ARRIVAL (RNAV) Transition Routes

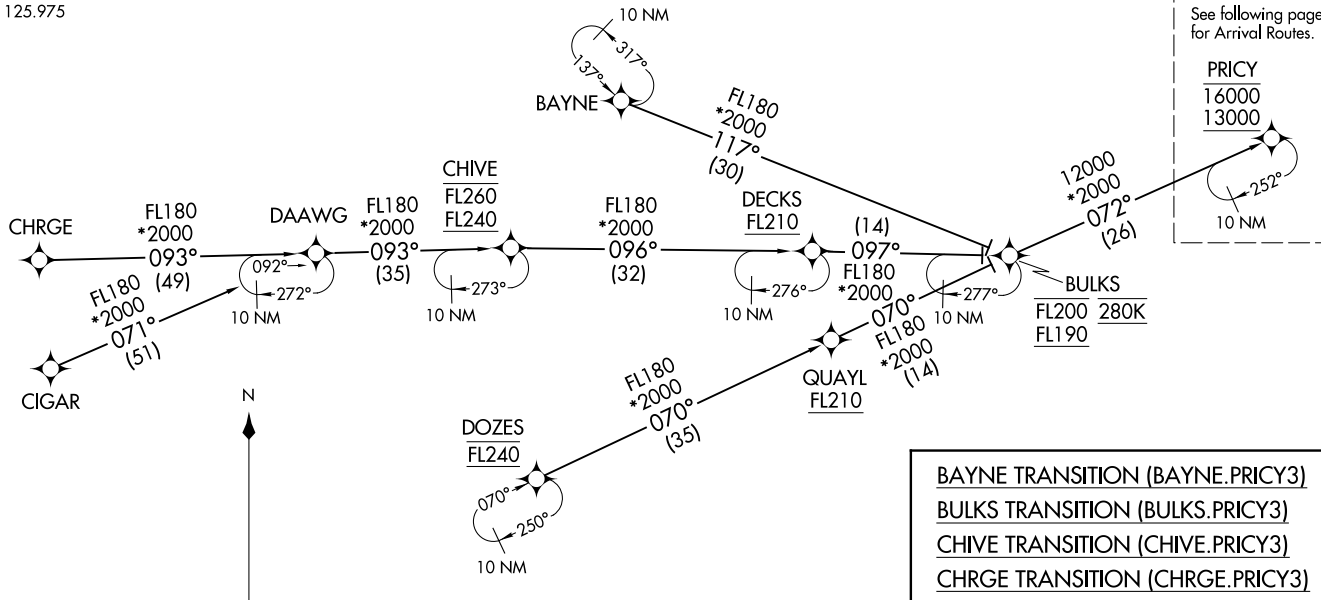
ORLANDO, FLORIDA

ORLANDO APP CON
134.05 339.8
ISM ATIS
128.775
LEE ATIS
134.325
MCO D-ATIS ARR
121.25
MLB ATIS
132.55
ORL ATIS
127.25
SFB ATIS
125.975

NOTE: Jet aircraft only.
NOTE: Do not file BULKS, CHIVE or DOZES Transitions - to be assigned by ATC.
NOTE: For vertical navigation planning, landing south, select Rwy 18R, landing north, select Rwy 36L.

RNAV 1 - DME/DME/IRU or GPS.
CHRG Transition, RNAV 1-GPS.
CIGAR Transition, RNAV 1-GPS.

RADAR required.



NOTE: Chart not to scale.

(CONTINUED ON FOLLOWING PAGE)

- BAYNE TRANSITION (BAYNE.PRIC3)
- BULKS TRANSITION (BULKS.PRIC3)
- CHIVE TRANSITION (CHIVE.PRIC3)
- CHRG TRANSITION (CHRG.PRIC3)
- CIGAR TRANSITION (CIGAR.PRIC3)
- DOZES TRANSITION (DOZES.PRIC3)

(PRIC3.PRIC3) 22307

AL-571 (FAA)
PRIC3 THREE ARRIVAL (RNAV) Transition Routes

ORLANDO, FLORIDA

PRICY THREE ARRIVAL (RNAV) Arrival Routes

ORLANDO, FLORIDA

ORLANDO APP CON
 134.05 339.8
 ISM ATIS
 128.775
 LEE ATIS
 134.325
 MCO D-ATIS ARR
 121.25
 MLB ATIS
 132.55
 ORL ATIS
 127.25
 SFB ATIS
 125.975

LEESBURG INTL

LYENS
 5000 210K

Ldg KMCO Rwys 17L/R, 18L/R

ORLANDO SANFORD INTL

HAMMY

EXEC

DVOLA

ORLANDO INTL

GIRAF
 8000 220K

ARHIP

KISSIMMEE GATEWAY

OTKEE
 11000 250K

Ldg KLEE/KSFB/KISM/KORL/KMLB

TAYYE
 12000 250K
 10000

EXBAN

MELBOURNE ORLANDO INTL

PRICY
 16000
 13000

BOCCCE

JUMBA

AMADS
 9000

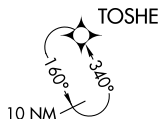
LORRA
 7000 210K

Ldg KMCO Rwys 35L/R, 36L/R

NOTE: Jet aircraft only.
 NOTE: For vertical navigation planning, landing south, select Rwy 18R, landing north, select Rwy 36L.

SE-3, 22 FEB 2024 to 21 MAR 2024

SE-3, 22 FEB 2024 to 21 MAR 2024



NOTE: Chart not to scale.

(NARRATIVE ON FOLLOWING PAGE)

PRICY THREE ARRIVAL (RNAV) Arrival Routes

ORLANDO, FLORIDA

ARRIVAL ROUTE DESCRIPTION

KMCO: From PRICY on track 071° to BOCCE, then on track 068° to JUMBA.

LANDING KMCO RUNWAYS 17L/R, 18L/R: From JUMBA on track 068° to cross TAYYE between 10000 and 12000 and at 250K, then on track 060° to ARHIP, then on track 006° to cross GIRAF at or above 8000 and at 220K, then on track 006° to DVOLA, then on track 006° to cross LYENS at 5000 and at 210K, then on track 006°. Expect RADAR vectors to final approach course.

LANDING KMCO RUNWAYS 35L/R, 36L/R: From JUMBA on track 104° to cross AMADS at or below 9000, then on track 104° to cross LORRA at 7000 and at 210K, then on heading 096°. Expect RADAR vectors to final approach course.

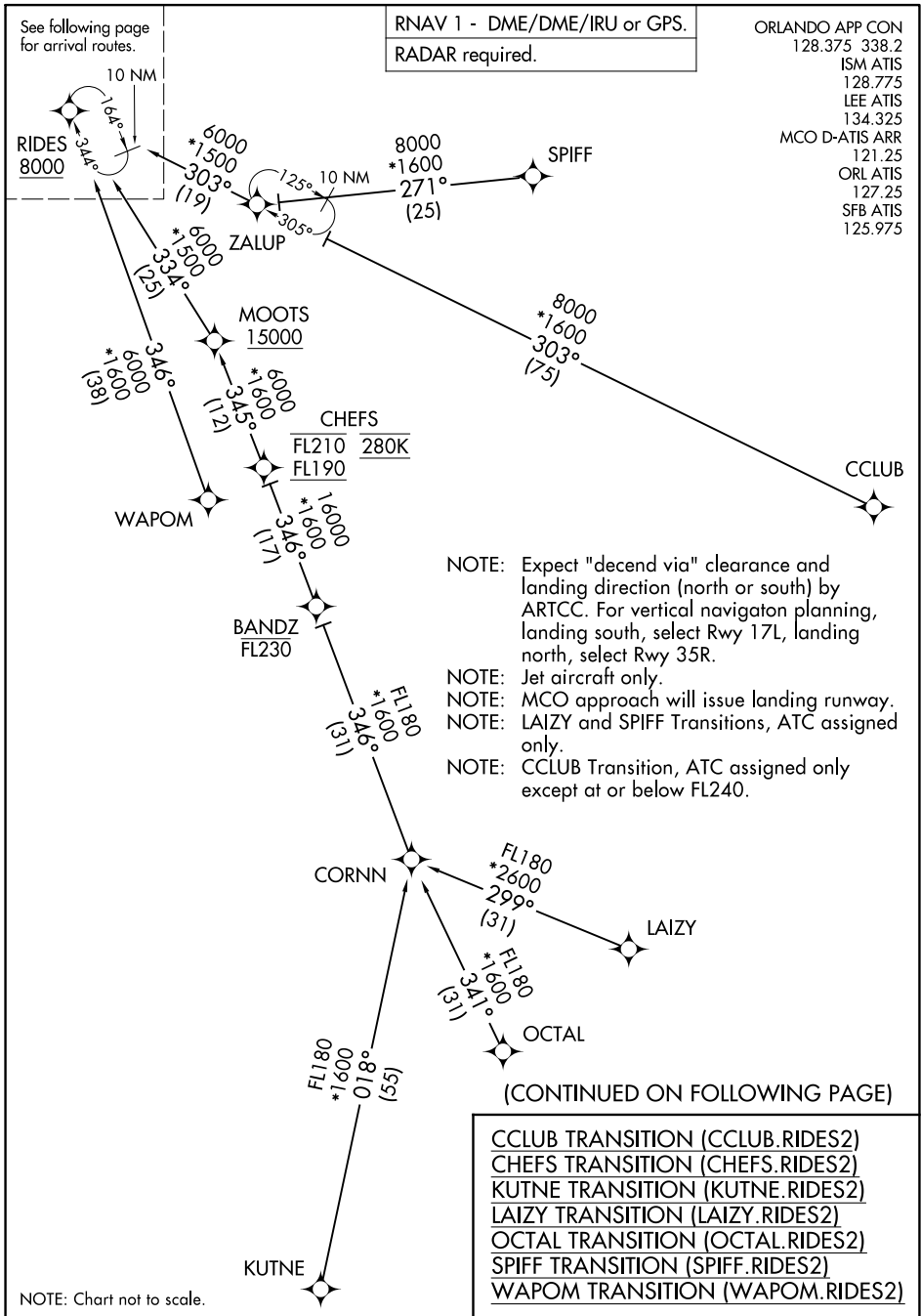
LANDING KLEE/KSFB/KISM/KMLB/KORL: From PRICY on track 071° to BOCCE, then on track 056° to cross OTKEE at 11000 and at 250K, then on track 056°. Expect RADAR vectors to final approach course.

SE-3, 22 FEB 2024 to 21 MAR 2024

SE-3, 22 FEB 2024 to 21 MAR 2024

RIDES TWO ARRIVAL (RNAV) Transition Routes

ORLANDO, FLORIDA



SE-3, 22 FEB 2024 to 21 MAR 2024

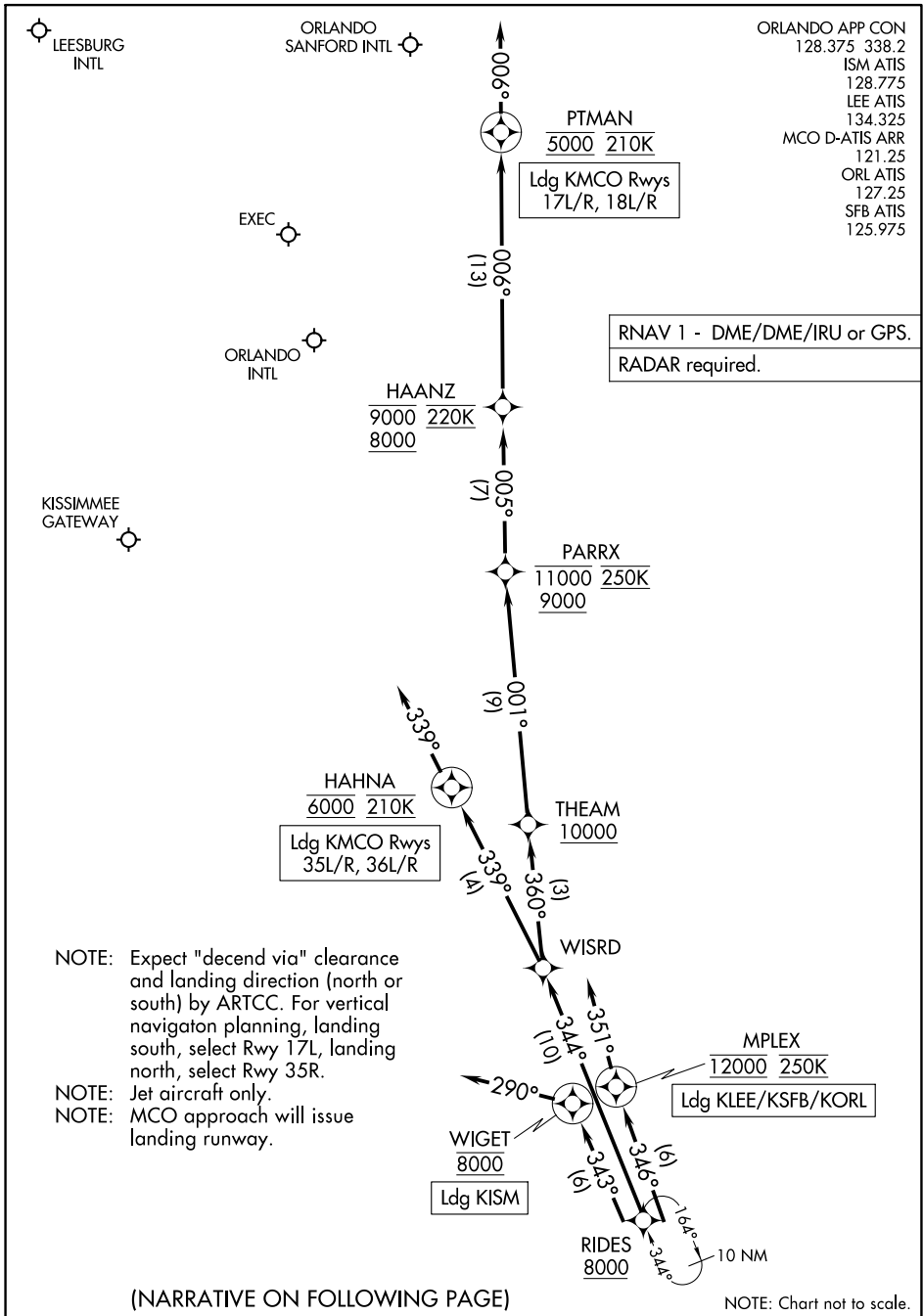
SE-3, 22 FEB 2024 to 21 MAR 2024

RIDES TWO ARRIVAL (RNAV) Transition Routes

ORLANDO, FLORIDA

RIDES TWO ARRIVAL (RNAV) Arrival Routes

ORLANDO, FLORIDA



SE-3, 22 FEB 2024 to 21 MAR 2024

SE-3, 22 FEB 2024 to 21 MAR 2024

ARRIVAL ROUTE DESCRIPTION

KMCO: From RIDES on track 344° to WISRD.

LANDING KMCO RUNWAYS 17L/R, 18L/R: From WISRD on track 360° to cross THEAM at or above 10000, then on track 001° to cross PARRX between 9000 and 11000 and at 250K, then on track 005° to cross HAANZ between 8000 and 9000 and at 220K, then on track 006° to cross PTMAN at 5000 and at 210K, then on track 006°. Expect RADAR vectors to final approach course.

LANDING KMCO RUNWAYS 35L/R, 36L/R: From WISRD on track 339° to cross HAHNA at 6000 and at 210K, then on track 339°. Expect ILS or RNAV Rwy 35R approach or RADAR vectors to final approach course.

LANDING KISM: From RIDES on track 343° to cross WIGET at 8000, then on heading 290°. Expect RADAR vectors to final approach course.

LANDING KLEE/KSFB/KORL: From RIDES on track 346° to cross MPLEX at 12000 and at 250K, then on heading 351°. Expect RADAR vectors to final approach course.

SE-3, 22 FEB 2024 to 21 MAR 2024

SE-3, 22 FEB 2024 to 21 MAR 2024

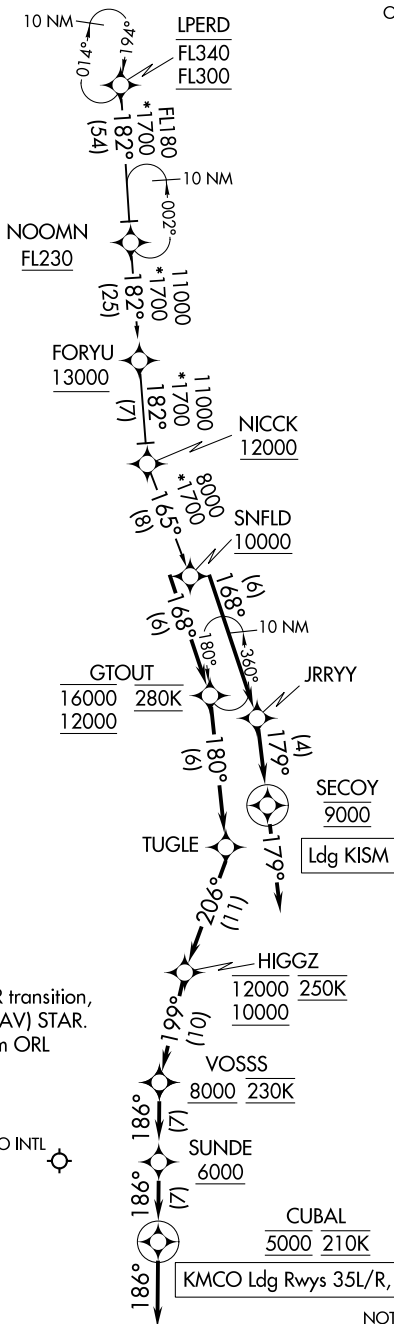
SNFLD THREE ARRIVAL (RNAV)

ORLANDO, FLORIDA

RNAV 1- DME/DME/IRU or GPS.

RADAR required.

ORLANDO APP CON
 128.375 338.2
 ISM ATIS
 128.775
 MCO D-ATIS ARR
 121.25



NOTE: Jet aircraft only.
 NOTE: Landing North use runway 35R transition,
 landing South use GTOUT (RNAV) STAR.
 Expect runway assignment from ORL
 approach prior to SNFLD.



(NARRATIVE ON FOLLOWING PAGE)

NOTE: Chart not to scale.

SNFLD THREE ARRIVAL (RNAV)

ORLANDO, FLORIDA

SE-3, 22 FEB 2024 to 21 MAR 2024

SE-3, 22 FEB 2024 to 21 MAR 2024

ARRIVAL ROUTE DESCRIPTION

LANDING KMCO RUNWAYS 35L/R, 36L/R: From SNFLD on track 168° to cross GTOUT between 12000 and 16000 and at 280K, then on track 180° to TUGLE, then on track 206° to cross HIGGZ between 10000 and 12000 and at 250K, then on track 199° to cross VOSSS at or above 8000 and at 230K, then on track 186° to cross SUNDE at or above 6000, then on track 186° to cross CUBAL at 5000 and at 210K, then on track 186°. Expect RADAR vectors to final approach course.

LANDING KISM: From SNFLD on track 168° to JRRYY, then on track 179° to cross SECOY at 9000, then on track 179°. Expect RADAR vectors to final approach course.

FORYU TRANSITION (FORYU.SNFLD3)

LPERD TRANSITION (LPERD.SNFLD3)

SE-3, 22 FEB 2024 to 21 MAR 2024

SE-3, 22 FEB 2024 to 21 MAR 2024