

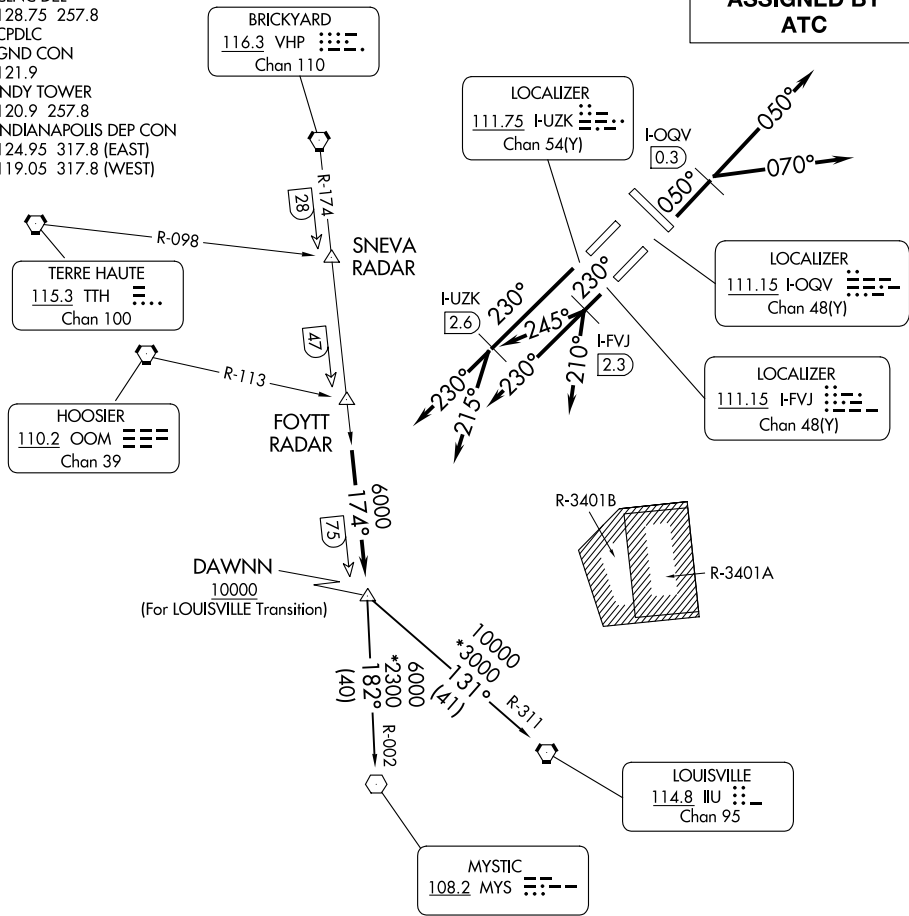
(DAWNN1.DAWNN) 23334  
**DAWNN ONE DEPARTURE**

AL-203 (FAA)

INDIANAPOLIS INTL (IND)  
 INDIANAPOLIS, INDIANA

D-ATIS 134.25  
 CLNC DEL  
 128.75 257.8  
 CPDLC  
 GND CON  
 121.9  
 INDY TOWER  
 120.9 257.8  
 INDIANAPOLIS DEP CON  
 124.95 317.8 (EAST)  
 119.05 317.8 (WEST)

**TOP ALTITUDE:  
 ASSIGNED BY  
 ATC**



EC-2, 22 FEB 2024 to 21 MAR 2024

EC-2, 22 FEB 2024 to 21 MAR 2024

- NOTE: RADAR required.
- NOTE: Select appropriate localizer/DME frequency/channel prior to departure.
- NOTE: Turbojets accelerate to 250K until reaching 10000, if unable advise ATC.
- NOTE: Assigned to aircraft with a requested altitude of 11000 or above.

(NARRATIVE ON FOLLOWING PAGE)

NOTE: Chart not to scale.

**DAWNN ONE DEPARTURE**  
 (DAWNN1.DAWNN) 07DEC17

INDIANAPOLIS, INDIANA  
 INDIANAPOLIS INTL (IND)



DEPARTURE ROUTE DESCRIPTION

TAKEOFF RWY 23R (TURBOJETS ONLY-DME REQUIRED): Climb on heading 230° to I-UZK 2.6 DME, then on assigned heading 230° or 215° to assigned altitude.

Thence....

TAKEOFF RWY 23L (TURBOJETS ONLY-DME REQUIRED): Climb on heading 230° to I-FVJ 2.3 DME, then on assigned heading 210°, 230°, or 245° to assigned altitude.

Thence....

TAKEOFF RWY 5R (TURBOJETS ONLY-DME REQUIRED): Climb on heading 050° to I-OQV 0.3 DME, then on assigned heading 050° or 070° to assigned altitude.

Thence....

TAKEOFF ALL OTHER RWYS (TURBOJETS ONLY): Climb on assigned heading to assigned altitude. Thence....

TAKEOFF ALL RWYS (PROPELLER ONLY): Climb on assigned heading to assigned altitude. Thence....

DEPARTING ALL OTHER AUTHORIZED RUNWAYS/AIRPORTS: Climb on assigned heading to assigned altitude. Thence....

....on RADAR vectors to join VHP R-174 to DAWNN INT then on transition or assigned route. Expect clearance to requested altitude ten minutes after departure.

LOUISVILLE TRANSITION (DAWNN1.IIU): From over DAWNN INT on IIU R-311 to IIU VORTAC.

MYSTIC TRANSITION (DAWNN1.MYS): From over DAWNN INT on MYS R-002 to MYS VOR.

EC-2, 22 FEB 2024 to 21 MAR 2024

EC-2, 22 FEB 2024 to 21 MAR 2024

(OOM5.OOM) 23334

# HOOSIER FIVE DEPARTURE

AL-203 (FAA)

INDIANAPOLIS INTL (IND)  
INDIANAPOLIS, INDIANA

D-ATIS 134.25  
CLNC DEL  
128.75 257.8  
CPDLC  
GND CON  
121.9  
INDY TOWER  
120.9 257.8  
INDIANAPOLIS DEP CON  
124.95 317.8 (EAST)  
119.05 317.8 (WEST)

**TOP ALTITUDE:  
(JETS) 5000  
(PROPS) 3000**

BRICKYARD  
116.3 VHP [Morse code]  
Chan 110

LOCALIZER  
111.75 I-UZK [Morse code]  
Chan 54(Y)

I-OQV  
[Morse code]  
0.3

LOCALIZER  
111.15 I-OQV [Morse code]  
Chan 48(Y)

LOCALIZER  
111.15 I-FVJ [Morse code]  
Chan 48(Y)

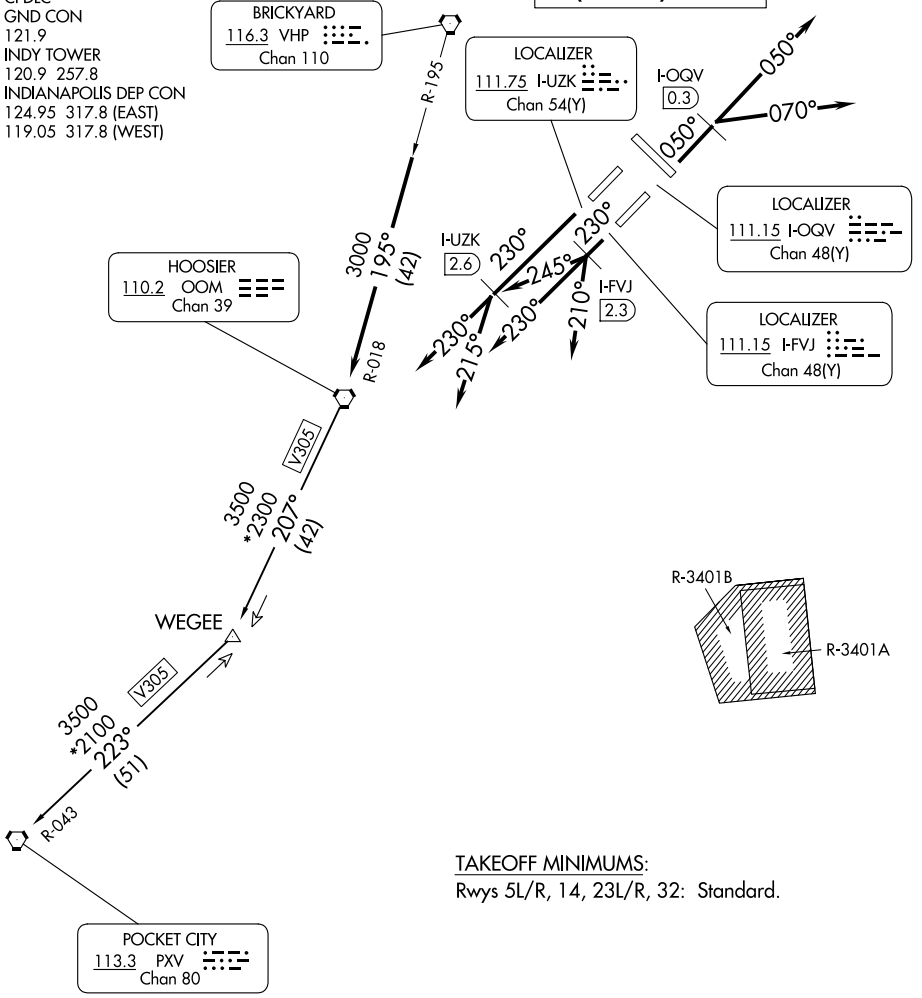
HOOSIER  
110.2 OOM [Morse code]  
Chan 39

I-UZK  
[Morse code]  
2.6

I-FVJ  
[Morse code]  
2.3

EC-2, 22 FEB 2024 to 21 MAR 2024

EC-2, 22 FEB 2024 to 21 MAR 2024



TAKEOFF MINIMUMS:  
Rwys 5L/R, 14, 23L/R, 32: Standard.

(NARRATIVE ON FOLLOWING PAGE)

- NOTE: RADAR required.
- NOTE: Select appropriate localizer/DME frequency/channel prior to departure.
- NOTE: Turbojets accelerate to 250K until reaching 10000, if unable advise ATC.
- NOTE: Assigned to aircraft with a requested altitude of 11000 or above.

NOTE: Chart not to scale.



DEPARTURE ROUTE DESCRIPTION

TAKEOFF RWY 5R (TURBOJETS ONLY-DME REQUIRED): Climb on heading 050° to I-OQV 0.3 DME, then on assigned heading 050° or 070°. Maintain 5000.

Thence....

TAKEOFF RWY 23R (TURBOJETS ONLY-DME REQUIRED): Climb on heading 230° to I-UZK 2.6 DME, then on assigned heading 230° or 215°. Maintain 5000.

Thence....

TAKEOFF RWY 23L (TURBOJETS ONLY-DME REQUIRED): Climb on heading 230° to I-FVJ 2.3 DME, then on assigned heading 210°, 230°, or 245°. Maintain 5000.

Thence....

TAKEOFF ALL OTHER RWYS (TURBOJETS ONLY): Climb on assigned heading. Maintain 5000. Thence....

TAKEOFF ALL RWYS (PROPELLER ONLY): Climb on assigned heading. Maintain 3000. Thence....

DEPARTING ALL OTHER AUTHORIZED RUNWAYS: Climb on assigned heading to assigned altitude. Thence....

....expect RADAR vectors to join VHP R-195 to OOM VORTAC then via transition or assigned route. Expect clearance to requested altitude ten minutes after departure.

POCKET CITY TRANSITION (OOM5.PXV): From over OOM VORTAC via OOM R-207 to WEGEE, then via PXV R-043 to PXV VORTAC.

EC-2, 22 FEB 2024 to 21 MAR 2024

EC-2, 22 FEB 2024 to 21 MAR 2024

(INDY1.VHP) 23334

# INDY ONE DEPARTURE

AL-203 (FAA)

INDIANAPOLIS INTL (IND)  
INDIANAPOLIS, INDIANA

D-ATIS 134.25  
CLNC DEL  
128.75 257.8  
CPDLC  
GND CON  
121.9  
INDY TOWER  
120.9 257.8  
INDIANAPOLIS DEP CON  
124.95 317.8 (EAST)  
119.05 317.8 (WEST)

RADAR required.

**TOP ALTITUDE:**  
**(JETS) 5000**  
**(PROPS) 3000**



**BOILER**  
115.1 BVT  
Chan 98

**MARION**  
108.6 MZZ  
Chan 23

**ROSEWOOD**  
117.5 ROD  
Chan 122

**CHAMPAIGN**  
110.0 CMI  
Chan 37

**LOCALIZER**  
111.75 I-UZK  
Chan 54(Y)

**I-OQV**  
0.3

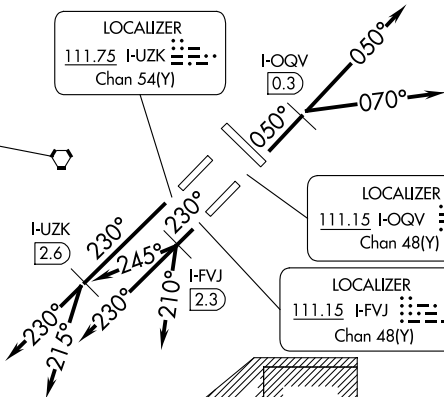
**BRICKYARD**  
116.3 VHP  
Chan 110

**LOCALIZER**  
111.15 I-OQV  
Chan 48(Y)

**DAYTON**  
114.5 DGN  
Chan 92

**TERRE HAUTE**  
115.3 TTH  
Chan 100

**LOCALIZER**  
111.15 I-FVJ  
Chan 48(Y)



R-3401B

R-3401A

**SHELBYVILLE**  
116.15 SHB  
Chan 108 (Y)

**HOOSIER**  
110.2 OOM  
Chan 39

R-3403B

**POCKET CITY**  
113.3 PXV  
Chan 80

R-3403A

**CINCINNATI**  
117.3 CVG  
Chan 120

**TAKEOFF MINIMUMS:**

Rwy 5L/R, 14, 23L/R, 32: Standard.

NOTE: Select appropriate localizer/DME frequency/channel prior to departure.  
NOTE: Jet aircraft accelerate to 250K until reaching 10000. If unable advise ATC.

(NARRATIVE ON FOLLOWING PAGE)

NOTE: Chart not to scale.

# INDY ONE DEPARTURE

(INDY1.VHP) 19MAY22

INDIANAPOLIS, INDIANA  
INDIANAPOLIS INTL (IND)

EC-2, 22 FEB 2024 to 21 MAR 2024

EC-2, 22 FEB 2024 to 21 MAR 2024



DEPARTURE ROUTE DESCRIPTION

TAKEOFF RUNWAY 5R (JETS ONLY-DME REQUIRED): Climb on heading 050° to I-OQV 0.3 DME, then on assigned heading 050° or 070°. Maintain 5000.

Thence . . . .

TAKEOFF RUNWAY 23R (JETS ONLY-DME REQUIRED): Climb on heading 230° to I-UZK 2.6 DME, then on assigned heading 230° or 215°. Maintain 5000.

Thence....

TAKEOFF RUNWAY 23L (JETS ONLY-DME REQUIRED): Climb on heading 230° to I-FVJ 2.3 DME, then on assigned heading 210°, 230°, or 245°. Maintain 5000.

Thence....

TAKEOFF ALL OTHER RUNWAYS (JETS ONLY): Climb on assigned heading. Maintain 5000. Thence....

TAKEOFF ALL RUNWAYS (PROPS ONLY): Climb on assigned heading. Maintain 3000. Thence....

....vector to assigned route/fix. Expect clearance to filed altitude 10 minutes after departure.

EC-2, 22 FEB 2024 to 21 MAR 2024

EC-2, 22 FEB 2024 to 21 MAR 2024

D-ATIS  
134.25  
CLNC DEL  
128.75 257.8  
CPDLC  
GND CON  
121.9  
INDY TOWER  
120.9 257.8  
INDIANAPOLIS DEP CON  
124.95 317.8 (EAST)  
119.05 317.8 (WEST)

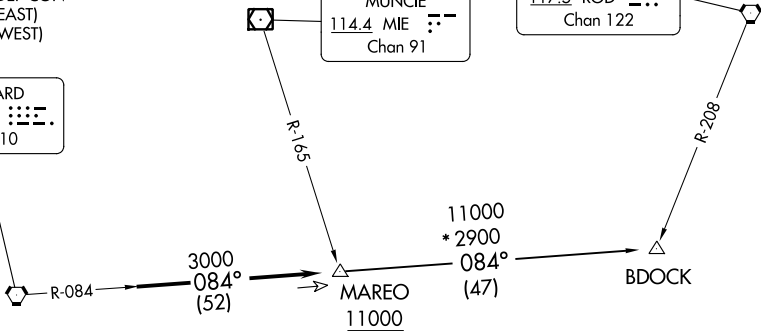
TAKEOFF MINIMUMS  
Rwys 5L/R, 14, 23L/R, 32: Standard.

**TOP ALTITUDE:**  
**(JETS) 5000**  
**(PROPS) 3000**

BRICKYARD  
116.3 VHP  
Chan 110

MUNCIE  
114.4 MIE  
Chan 91

ROSEWOOD  
117.5 ROD  
Chan 122

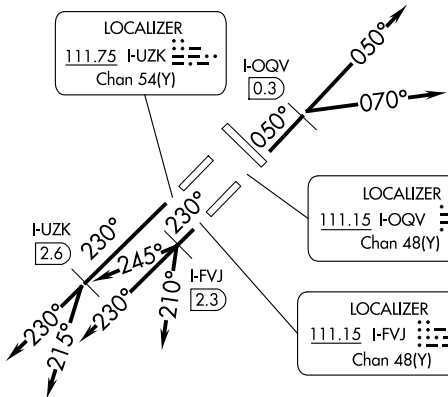


LOCALIZER  
111.75 HUZK  
Chan 54(Y)

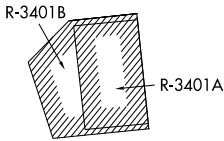
I-OQV  
0.3

LOCALIZER  
111.15 I-OQV  
Chan 48(Y)

LOCALIZER  
111.15 I-FVJ  
Chan 48(Y)



- NOTE: RADAR required.
- NOTE: Select appropriate localizer/DME frequency/channel prior to departure.
- NOTE: Turbojets accelerate to 250K until reaching 10000, if unable advise ATC.
- NOTE: Assigned to aircraft with a requested altitude of 11000 or above.



(NARRATIVE ON FOLLOWING PAGE)

NOTE: Chart not to scale.

EC-2, 22 FEB 2024 to 21 MAR 2024

EC-2, 22 FEB 2024 to 21 MAR 2024



DEPARTURE ROUTE DESCRIPTION

TAKEOFF RWY 5R (TURBOJETS ONLY-DME REQUIRED): Climb on heading 050° to I-OQV 0.3 DME, then on assigned heading 050° or 070°. Maintain 5000.

Thence . . . .

TAKEOFF RWY 23R (TURBOJETS ONLY-DME REQUIRED): Climb on heading 230° to I-UZK 2.6 DME, then on assigned heading 230° or 215°. Maintain 5000.

Thence . . . .

TAKEOFF RWY 23L (TURBOJETS ONLY-DME REQUIRED): Climb on heading 230° to I-FVJ 2.3 DME, then on assigned heading 210°, 230°, or 245°. Maintain 5000.

Thence . . . .

TAKEOFF ALL OTHER RWYS (TURBOJETS ONLY): Climb on assigned heading. Maintain 5000. Thence . . . .

TAKEOFF ALL RWYS (PROPELLER ONLY): Climb on assigned heading. Maintain 3000. Thence . . . .

DEPARTING ALL OTHER AUTHORIZED RUNWAYS: Climb on assigned heading to assigned altitude. Thence . . . .

. . . . expect RADAR vectors to join VHP R-084 to MAREO INT then via transition or assigned route. Expect clearance to requested altitude ten minutes after departure.

BDOCK TRANSITION (MAREO5.BDOCK): From over MAREO INT via VHP R-084 to BDOCK INT.

EC-2, 22 FEB 2024 to 21 MAR 2024

EC-2, 22 FEB 2024 to 21 MAR 2024



# MEARZ SEVEN DEPARTURE

INDIANAPOLIS, INDIANA

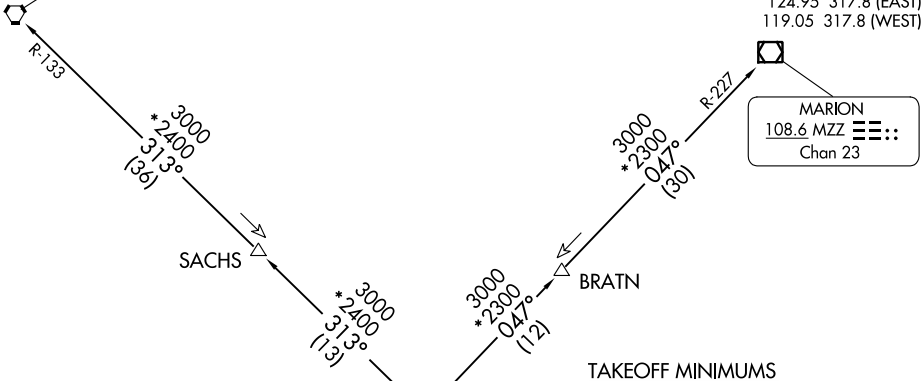
**TOP ALTITUDE:**  
**(JETS) 5000**  
**(PROPS) 3000**

RADAR required.

D-ATIS 134.25  
CLNC DEL  
128.75 257.8  
CPDLC  
GND CON  
121.9  
INDY TOWER  
120.9 257.8  
INDIANAPOLIS DEP CON  
124.95 317.8 (EAST)  
119.05 317.8 (WEST)

BOILER  
115.1 BVT  
Chan 98

MARION  
108.6 MZZ  
Chan 23



TAKEOFF MINIMUMS

Rwy 5L/R, 14, 23L/R, 32: Standard.

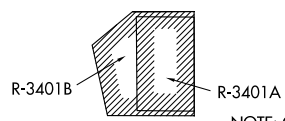
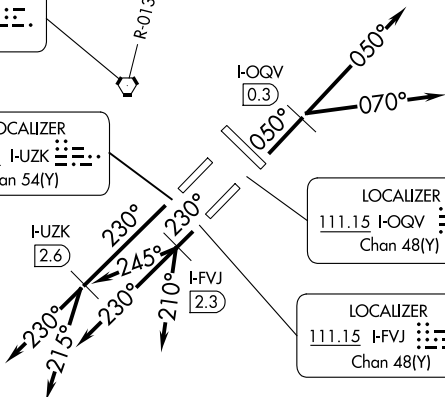
- NOTE: Turbojets accelerate to 250K until reaching 10000, if unable advise ATC.
- NOTE: Assigned to aircraft with a requested altitude of 11000 or above.
- NOTE: Select appropriate localizer/DME frequency/channel prior to departure.

BRICKYARD  
116.3 VHP  
Chan 110

LOCALIZER  
111.75 I-UZK  
Chan 54(Y)

LOCALIZER  
111.15 I-OQV  
Chan 48(Y)

LOCALIZER  
111.15 I-FVJ  
Chan 48(Y)



NOTE: Chart not to scale.

(NARRATIVE ON FOLLOWING PAGE)

EC-2, 22 FEB 2024 to 21 MAR 2024

EC-2, 22 FEB 2024 to 21 MAR 2024



DEPARTURE ROUTE DESCRIPTION

TAKEOFF RUNWAY 5R (TURBOJETS ONLY-DME REQUIRED): Climb on heading 050° to I-OQV 0.3 DME, then on assigned heading 050° or 070°. Maintain 5000.

Thence....

TAKEOFF RUNWAY 23R (TURBOJETS ONLY-DME REQUIRED): Climb on heading 230° to I-UZK 2.6 DME, then on assigned heading 230° or 215°. Maintain 5000.

Thence....

TAKEOFF RUNWAY 23L (TURBOJETS ONLY-DME REQUIRED): Climb on heading 230° to I-FVJ 2.3 DME, then on assigned heading 210°, 230°, or 245°. Maintain 5000.

Thence....

TAKEOFF ALL OTHER RUNWAYS (TURBOJETS ONLY): Climb on assigned heading. Maintain 5000. Thence....

TAKEOFF ALL RUNWAYS (PROPELLER ONLY): Climb on assigned heading. Maintain 3000. Thence....

DEPARTING ALL OTHER AUTHORIZED RUNWAYS: Climb on assigned heading to assigned altitude. Thence....

....expect RADAR vectors to join VHP R-013 to MEARZ then on transition or assigned route. Expect clearance to requested altitude ten minutes after departure.

BOILER TRANSITION (MEARZ.BVT): From over MEARZ on BVT R-133 to BVT VORTAC.

MARION TRANSITION (MEARZ.MZZ): From over MEARZ on MZZ R-227 to MZZ VOR/DME.

EC-2, 22 FEB 2024 to 21 MAR 2024

EC-2, 22 FEB 2024 to 21 MAR 2024

**(ROCKY1.ROCKY) 23334**  
**ROCKY ONE DEPARTURE**

AL-203 (FAA)

**INDIANAPOLIS INTL (IND)**  
 INDIANAPOLIS, INDIANA

D-ATIS  
 134.25  
 CLNC DEL  
 128.75 257.8  
 CPDLC  
 GND CON  
 121.9  
 INDY TOWER  
 120.9 257.8  
 INDIANAPOLIS DEP CON  
 124.95 317.8 (EAST)  
 119.05 317.8 (WEST)

**TOP ALTITUDE:**  
**(JETS) 5000**  
**(PROPS) 3000**

SPINNER  
 112.7 SPI  
 Chan 74

BRICKYARD  
 116.3 VHP  
 Chan 110

TERRE HAUTE  
 115.3 TTH  
 Chan 100

V14-50  
 2700  
 244°  
 (45)

7000  
 \*3100  
 292°  
 (42)

ROCKY  
 10000  
 (For ST LOUIS Transition only)

LOCALIZER  
 111.75 I-UZK  
 Chan 54(Y)

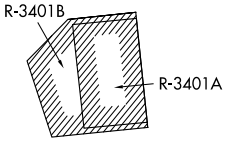
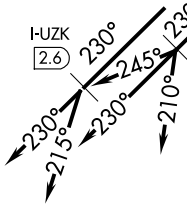
I-OQV  
 0.3

LOCALIZER  
 111.15 I-OQV  
 Chan 48(Y)

LOCALIZER  
 111.15 I-FVJ  
 Chan 48(Y)

I-UZK  
 2.6

I-FVJ  
 2.3



ST LOUIS  
 117.4 STL  
 Chan 121

10000  
 \*2300  
 239°  
 (88)

R-112  
 7000  
 \*3100  
 292°  
 (42)

5000  
 273°  
 (74)

R-059

EC-2, 22 FEB 2024 to 21 MAR 2024

EC-2, 22 FEB 2024 to 21 MAR 2024

**TAKEOFF MINIMUMS**

Rwys 5L/R, 14, 23L/R, 32: Standard.

NOTE: RADAR required.

NOTE: Select appropriate localizer/DME frequency/channel prior to departure.

NOTE: Turbojets accelerate to 250K until reaching 10000, if unable advise ATC.

NOTE: Assigned to aircraft with a requested altitude of 11000 or above.

(NARRATIVE ON FOLLOWING PAGE)

NOTE: Chart not to scale.

**(ROCKY1.ROCKY) 01FEB18**  
**ROCKY ONE DEPARTURE**

INDIANAPOLIS, INDIANA  
 INDIANAPOLIS INTL (IND)



DEPARTURE ROUTE DESCRIPTION

TAKEOFF RWY 5R (TURBOJETS ONLY-DME Required): Climb on heading 050° to I-OQV 0.3 DME, then on assigned heading 050° or 070°. Maintain 5000. Thence . . . .

TAKEOFF RWY 23R (TURBOJETS ONLY-DME Required): Climb on heading 230° to I-UZK 2.6 DME, then on assigned heading 230° or 215°. Maintain 5000. Thence . . . .

TAKEOFF RWY 23L (TURBOJETS ONLY-DME Required): Climb on heading 230° to I-FVJ 2.3 DME, then on assigned heading 210°, 230°, or 245°. Maintain 5000. Thence . . . .

TAKEOFF ALL OTHER RUNWAYS (TURBOJETS ONLY): Climb on assigned heading. Maintain 5000. Thence . . . .

TAKEOFF ALL RUNWAYS (PROPELLER ONLY): Climb on assigned heading. Maintain 3000. Thence . . . .

DEPARTING ALL OTHER AUTHORIZED RUNWAYS: Climb on assigned heading to assigned altitude. Thence . . . .

. . . . expect RADAR vectors to join VHP R-244 to TTH VORTAC, then via TTH R-273 to ROCKY INT then via transition or assigned route. Expect clearance to requested altitude ten minutes after departure.

SPINNER TRANSITION (ROCKY1.SPI): From over ROCKY INT on SPI R-112 to SPI VORTAC.  
ST LOUIS TRANSITION (ROCKY1.STL): From over ROCKY INT on STL R-059 to STL VORTAC.

EC-2, 22 FEB 2024 to 21 MAR 2024

EC-2, 22 FEB 2024 to 21 MAR 2024