

WAAS CH 72912 W24A	APP CRS 246°	Rwy Idg TDZE Apt Elev	3801 635 635
--	------------------------	-----------------------------	---

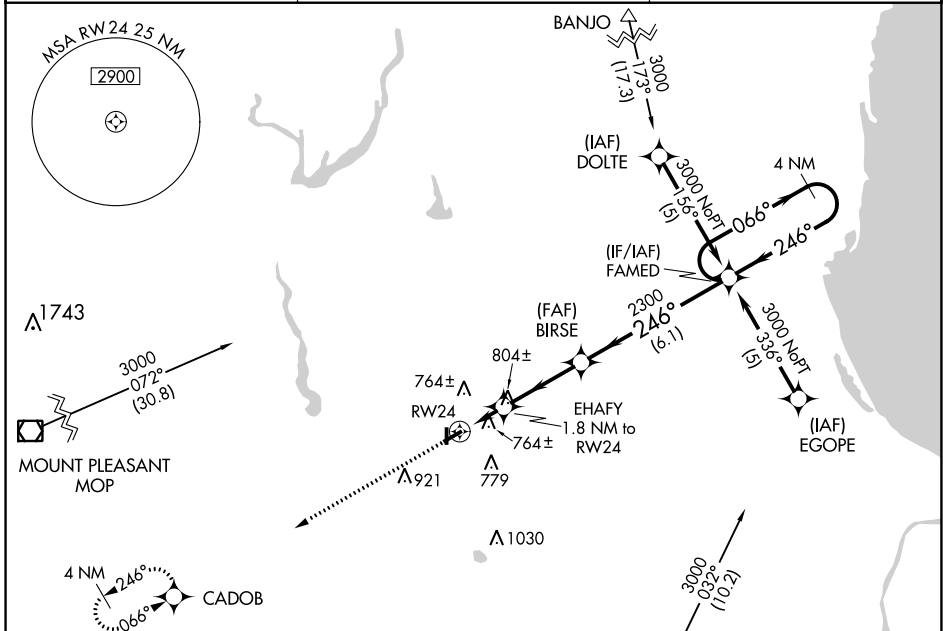
RNAV (GPS) RWY 24

JACK BARSTOW (IKW)

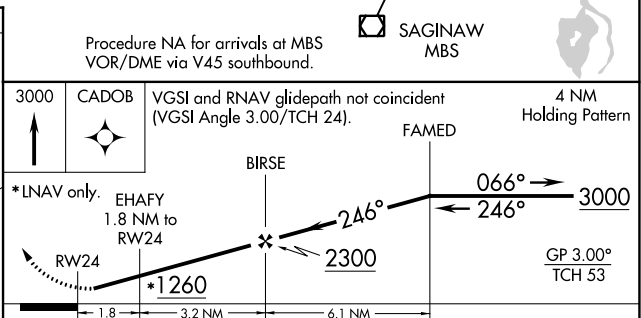
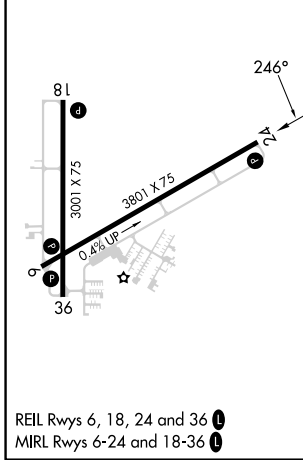
⚠ Baro-VNAV NA when using MBS Intl altimeter setting. For uncompensated Baro-VNAV systems, LNAV/VNAV NA below -16°C (4°F) or above 54°C (130°F). DME/DME RNP-0.3 NA. Rwy 24 helicopter visibility reduction below 3/4 SM NA. When local altimeter setting not received, use MBS Intl altimeter setting and increase all DA 31 feet and all MDA 40 feet and all LPV visibility 1/4 mile. Circling Rwy 18, 36 NA at night.

MISSED APPROACH:
Climb to 3000 direct CADOB and hold.

AWOS-3 119.525	GREAT LAKES APP CON ★ 126.45 235.625	UNICOM 122.8 (CTAF) 0
--------------------------	--	---------------------------------



ELEV 635	TDZE 635
-----------------	-----------------



CATEGORY	A	B	C	D
LPV DA	1021-1¼	386 (400-1¼)		NA
LNAV/VNAV DA	1068-1½	433 (500-1½)		NA
LNAV MDA	1060-1	425 (500-1)	1060-1¼ 425 (500-1¼)	NA
CIRCLING	1120-1	485 (500-1)	1240-1¾ 605 (700-1¾)	NA

EC-1, 22 FEB 2024 to 21 MAR 2024

EC-1, 22 FEB 2024 to 21 MAR 2024

APP CRS	Rwy Idg	3801
066°	TDZE	628
	Apt Elev	635

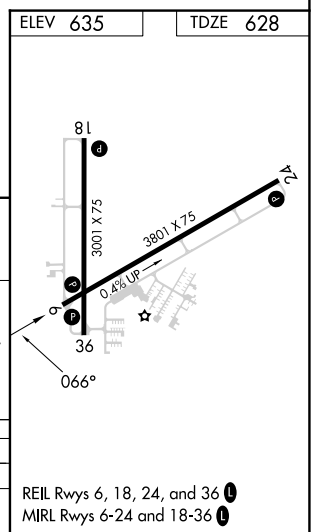
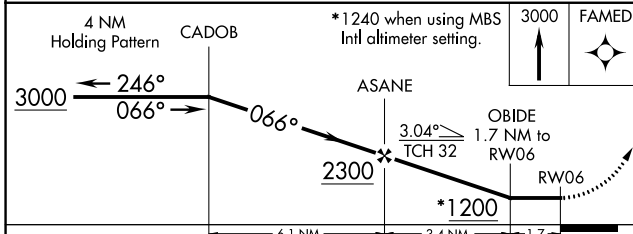
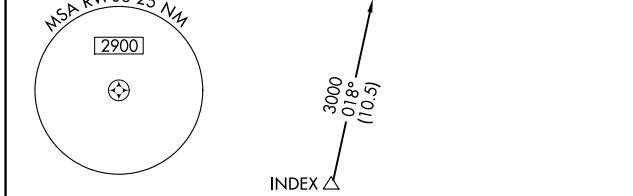
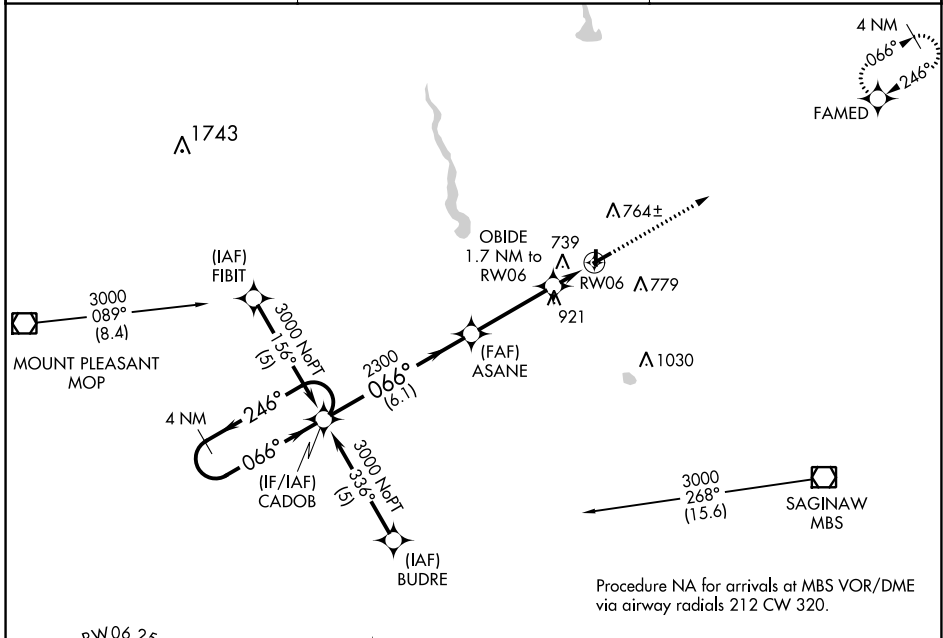
RNAV (GPS) RWY 6

JACK BARSTOW (IKW)

▽ DME/DME RNP-0.3 NA. Rwy 24 helicopter visibility reduction below 3/4 SM NA.
▲ When local altimeter setting not received, use MBS Intl altimeter setting and increase all MDA 40 feet and LNAV Cat C visibility 1/4 mile. Circling Rwy 18, 36 NA at night.

MISSED APPROACH: Climb to 3000 direct FAMED and hold.

AWOS-3 119.525	GREAT LAKES APP CON ★ 126.45 235.625	UNICOM 122.8 (CTAF) ①
--------------------------	--	---------------------------------



CATEGORY	A	B	C	D
LNAV MDA	1000-1	372 (400-1)		NA
CIRCLING	1120-1	485 (500-1)	1240-1 3/4 605 (700-1 3/4)	NA

EC-1, 22 FEB 2024 to 21 MAR 2024

EC-1, 22 FEB 2024 to 21 MAR 2024

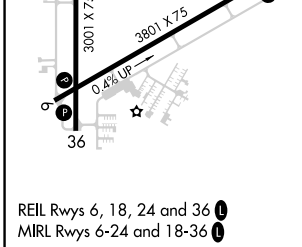
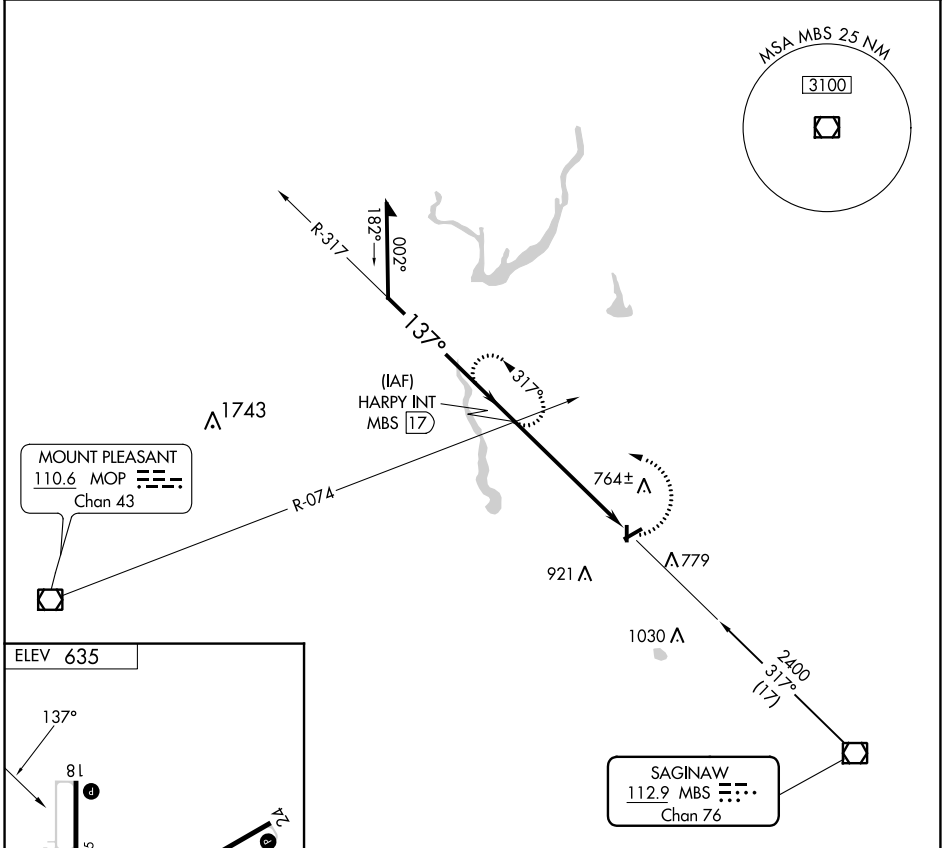
VOR/DME MBS 112.9 Chan 76	APP CRS 137°	Rwy Idg TDZE Apt Elev 635	N/A N/A 635
---	------------------------	--	--

VOR-A
JACK BARSTOW (IKW)

⚠ When local altimeter setting not received, use MBS Intl altimeter setting and increase all MDA 40 feet. Circling Rwy 18, 36 NA at night.
Rwy 18, 36 helicopter visibility reduction below 1 SM NA.

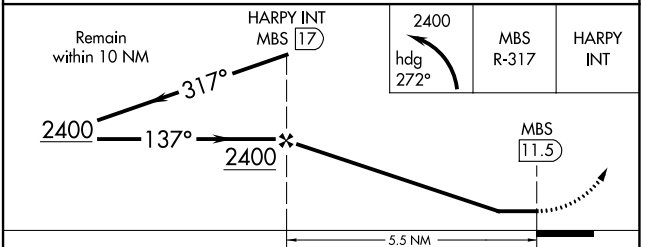
MISSED APPROACH: Climbing left turn to 2400 via heading 272° and MBS VOR/DME R-317 to HARRY INT/17 DME and hold.

AWOS-3 119.525	GREAT LAKES APP CON ★ 126.45 235.625	UNICOM 122.8 (CTAF) ①
--------------------------	--	---------------------------------



REIL Rws 6, 18, 24 and 36 ①
MIRL Rws 6-24 and 18-36 ①

FAF to MAP 5.5 NM					
Knots	60	90	120	150	180
Min:Sec	5:30	3:40	2:45	2:12	1:50



CATEGORY	A	B	C	D
CIRCLING	1140-1	505 (600-1)	1240-1¾ 605 (700-1¾)	NA