

ARRIVAL ROUTE DESCRIPTION

ALEXANDRIA TRANSITION (AEX.HUDZY4): From over AEX VORTAC on AEX R-235 to WAPPL, then on IAH R-067 to HUDZY. Thence. . . .

SAWMILL TRANSITION (SWB.HUDZY4): From over SWB VOR/DME on SWB R-211 to BRWCK, then on AEX R-235 to WAPPL, then on IAH R-067 to HUDZY. Thence. . . .

. . . .from over HUDZY on IAH R-067 to CLWSN, then on IAH R-067 to SWWAA, then on heading 190°. Expect RADAR vectors to final approach course.

SC-5, 22 FEB 2024 to 21 MAR 2024

SC-5, 22 FEB 2024 to 21 MAR 2024

DOOBI TWO ARRIVAL (RNAV)
(DOOBI.DOOBI2) 24UL14

GEORGE BUSH INTCNL/HOUSTON (IAH)
HOUSTON, TEXAS

ARRIVAL ROUTE DESCRIPTION

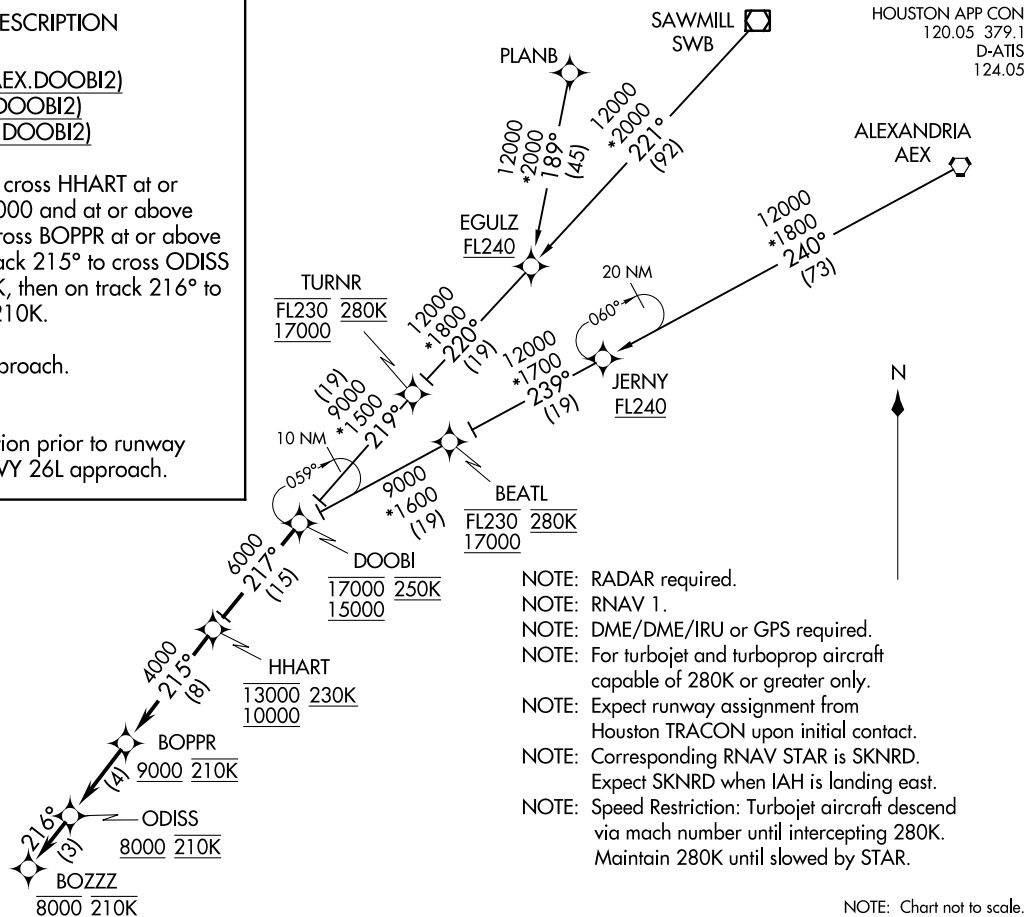
ALEXANDRIA TRANSITION (AEX.DOOBI2)
PLANB TRANSITION (PLANB.DOOBI2)
SAWMILL TRANSITION (SWB.DOOBI2)

From DOOBI on track 217° to cross HHART at or above 10000, at or below 13000 and at or above 230K, then on track 215° to cross BOPPR at or above 9000 and at 210K, then on track 215° to cross ODISS at or above 8000 and at 210K, then on track 216° to cross BOZZZ at 8000 and at 210K.

Expect assigned instrument approach.

LOST COMMUNICATIONS

In the event of lost communication prior to runway assignment, execute the ILS RWY 26L approach.



- NOTE: RADAR required.
- NOTE: RNAV 1.
- NOTE: DME/DME/IRU or GPS required.
- NOTE: For turbojet and turboprop aircraft capable of 280K or greater only.
- NOTE: Expect runway assignment from Houston TRACON upon initial contact.
- NOTE: Corresponding RNAV STAR is SKNRD. Expect SKNRD when IAH is landing east.
- NOTE: Speed Restriction: Turbojet aircraft descend via mach number until intercepting 280K. Maintain 280K until slowed by STAR.

NOTE: Chart not to scale.

HOUSTON APP CON
120.05 379.1
D-ATIS
124.05

(DOOBI.DOOBI2) 21112
DOOBI TWO ARRIVAL (RNAV) AL-5461 (FAA)
GEORGE BUSH INTCNL/HOUSTON (IAH)
HOUSTON, TEXAS

HOUSTON APP CON
124.35 316.15
D-ATIS
124.05

COWBOY TRANSITION (CVE.DRLLR5):

DIESEL TRANSITION (DIESEL.DRLLR5):

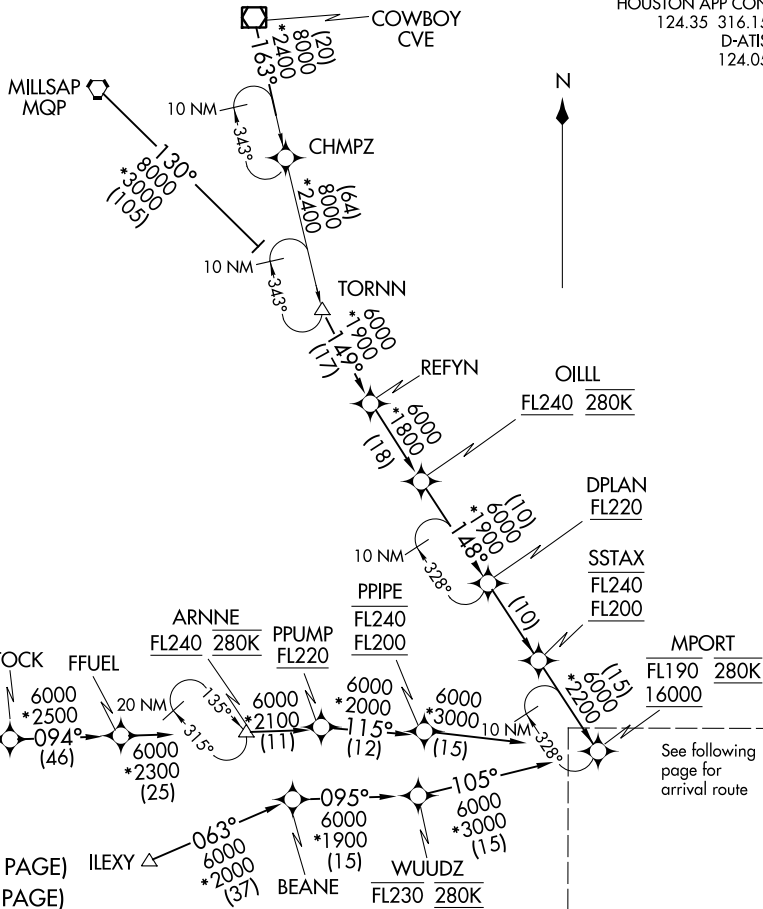
IILEXY TRANSITION (IILEXY.DRLLR5): Austin Terminal

Area Departures only.

MILLSAP TRANSITION (MQP.DRLLR5):

OILL TRANSITION (OILL.DRLLR5):

TORN TRANSITION (TORN.DRLLR5):



- NOTE: RADAR required.
- NOTE: RNAV 1.
- NOTE: DME/DME/IRU or GPS required.
- NOTE: Turbojet and turboprop aircraft capable of 280K or greater only.
- NOTE: Fly the Runway 26R transition; Houston Approach control may assign a different transition on initial contact.
- NOTE: Corresponding RNAV STAR is GUSHR. Expect GUSHR when IAH is landing east.
- NOTE: Turbojet aircraft descend via mach number until intercepting 280K. Maintain 280K until slowed by the STAR.

(NOTES ON THE FOLLOWING PAGE)
(NARRATIVE ON FOLLOWING PAGE)

NOTE: Chart not to scale.

DRILL FIVE ARRIVAL (RNAV)
(MPORT.DRLLR5) 26MAY16

Transition Routes

HOUSTON, TEXAS
GEORGE BUSH INTCNL/HOUSTON (IAH)

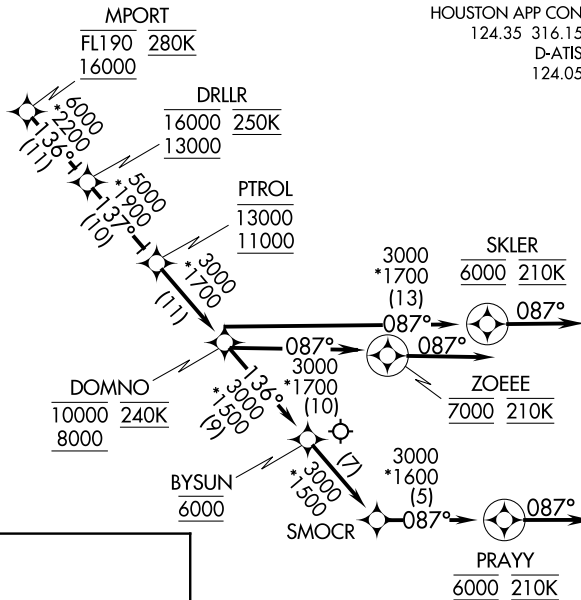
(MPORT.DRLLR5) 21112
AI-5461 (FAA)

Transition Routes

HOUSTON, TEXAS
GEORGE BUSH INTCNL/HOUSTON (IAH)

DRILLER FIVE ARRIVAL (RNAV) Arrival Routes
 (MPORT, DRLLR5) 25MAY16
 GEORGE BUSH INTCNL/HOUSTON (IAH)
 HOUSTON, TEXAS

- NOTE: RADAR required.
- NOTE: RNAV 1.
- NOTE: DME/DME/IRU or GPS required.
- NOTE: Turbojet and turboprop aircraft capable of 280K or greater only.
- NOTE: Fly the Runway 26R transition; Houston Approach control may assign a different transition on initial contact.
- NOTE: Corresponding RNAV STAR is GUSHR. Expect GUSHR when IAH is landing east.
- NOTE: Turbojet aircraft descend via mach number until intercepting 280K. Maintain 280K until slowed by the STAR.



ARRIVAL ROUTE DESCRIPTION

From MPORT on track 136° to cross DRLLR between 13000 and 16000 and at 250K, then on track 137° to cross PTROL between 11000 and 13000, then on track 137° to cross DOMNO between 8000 and 10000 and at 240K.

LANDING RUNWAY 26L: From DOMNO on track 087° to cross ZOEEE at 7000 and at 210K, then on track 087°. Expect vectors to final approach course.

LANDING RUNWAY 26R: From DOMNO on track 087° to cross SKLER at 6000 and at 210K, then on track 087°. Expect vectors to final approach course.

LANDING RUNWAY 27: From DOMNO on track 136° to cross BYSUN at 6000, then on track 136° to SMOCR, then on track 087° to cross PRAYY at 6000 and at 210K, then on track 087°. Expect vectors to final approach course.

NOTE: Chart not to scale.

(MPORT, DRLLR5) 21112 AI-5461 (FAA)
 DRILLER FIVE ARRIVAL (RNAV) Arrival Routes
 GEORGE BUSH INTCNL/HOUSTON (IAH)
 HOUSTON, TEXAS

ARRIVAL ROUTE DESCRIPTION

CORPUS CHRISTI TRANSITION (CRP.DUUUK3): From over CRP VORTAC on CRP R-015 to CHVRN, then on IAH R-236 to DUUUK. Thence

PALACIOS TRANSITION (PSX.DUUUK3): From over PSX VORTAC on PSX R-359 to GMANN, then on IAH R-236 to DUUUK. Thence

SAN ANTONIO TRANSITION (SAT.DUUUK3): From over SAT VORTAC on SAT R-095 to CHVRN, then on IAH R-236 to DUUUK. Thence

. . . . From over DUUUK on IAH R-236 to BIIGG. Depart BIIGG heading 085° for vectors to final approach.

SC-5, 22 FEB 2024 to 21 MAR 2024

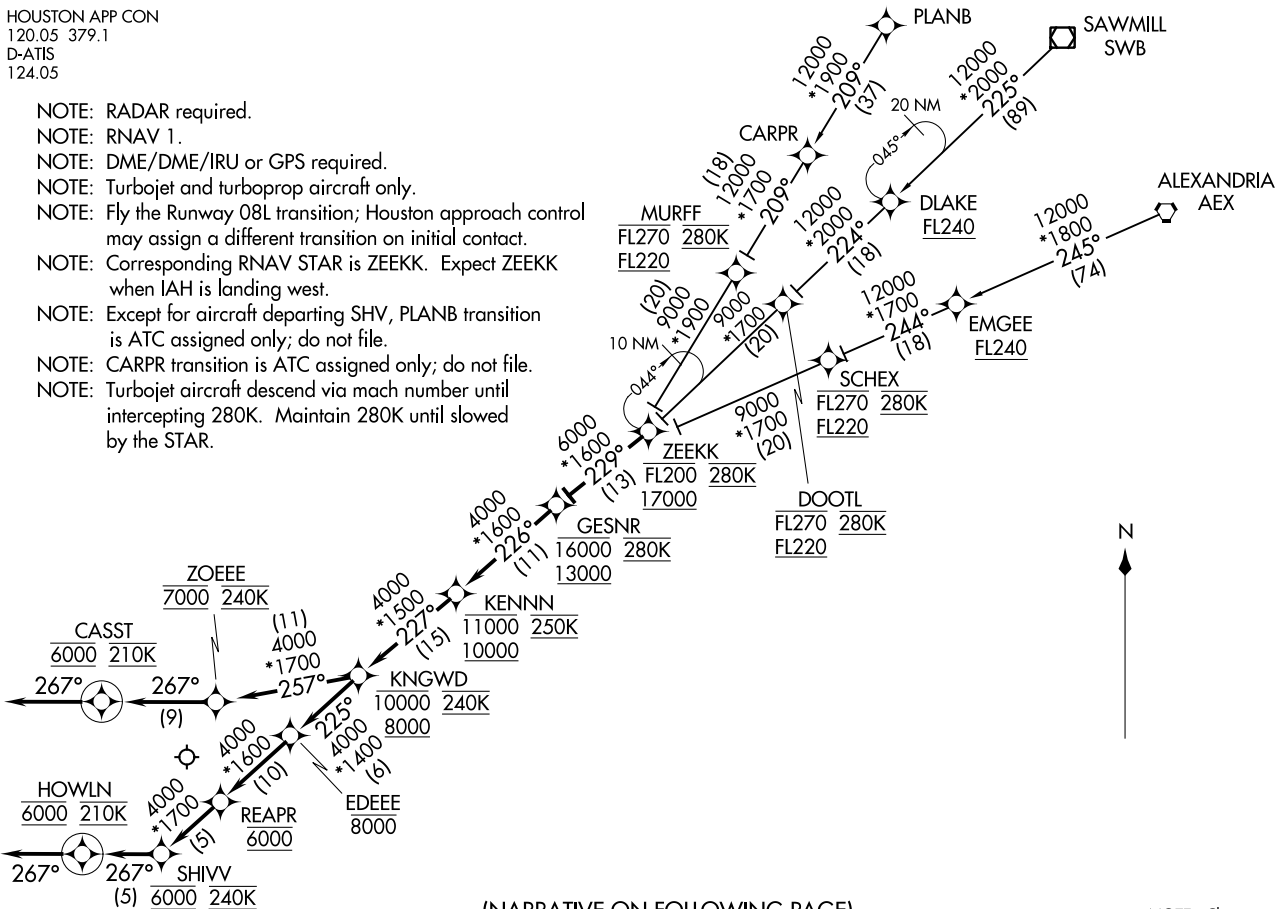
SC-5, 22 FEB 2024 to 21 MAR 2024

GESNR ONE ARRIVAL (RNAV)
(ZEEKK, GESNR1) 25JUN15

GEORGE BUSH INTCNL/HOUSTON (IAH)
HOUSTON, TEXAS

HOUSTON APP CON
120.05 379.1
D-ATIS
124.05

- NOTE: RADAR required.
- NOTE: RNAV 1.
- NOTE: DME/DME/IRU or GPS required.
- NOTE: Turbojet and turboprop aircraft only.
- NOTE: Fly the Runway 08L transition; Houston approach control may assign a different transition on initial contact.
- NOTE: Corresponding RNAV STAR is ZEEKK. Expect ZEEKK when IAH is landing west.
- NOTE: Except for aircraft departing SHV, PLANB transition is ATC assigned only; do not file.
- NOTE: CARPR transition is ATC assigned only; do not file.
- NOTE: Turbojet aircraft descend via mach number until intercepting 280K. Maintain 280K until slowed by the STAR.



(NARRATIVE ON FOLLOWING PAGE)

NOTE: Chart not to scale.

(ZEEKK, GESNR1) 21112
GESNR ONE ARRIVAL (RNAV)

AL-546 (FAA)

GEORGE BUSH INTCNL/HOUSTON (IAH)
HOUSTON, TEXAS

ARRIVAL ROUTE DESCRIPTION

ALEXANDRIA TRANSITION (AEX.GESNR1):

CARPR TRANSITION (CARPR.GESNR1):

PLANB TRANSITION (PLANB.GESNR1):

SAWMILL TRANSITION (SWB.GESNR1):

From ZEEKK on track 229° to cross GESNR at or above 13000, at or below 16000 and at 280K.

LANDING RUNWAY 8L: From GESNR on track 226° to cross KENNN at or above 10000, at or below 11000 and at 250K, then on track 227° to cross KNGWD at or above 8000, at or below 10000 and at 240K, then on track 257° to CROSS ZOEEE at 7000 and at 240K, then on track 267° to cross CASST at 6000 and at 210K, then on track 267°. Expect RADAR vectors to final approach course.

LANDING RUNWAYS 8R/9: From GESNR on track 226° to cross KENNN at or above 10000, at or below 11000 and at 250K, then on track 227° to cross KNGWD at or above 8000, at or below 10000 and at 240K, then on track 225° to cross EDEEE at or below 8000, then on track 225° to cross REAPR at 6000, then on track 225° to cross SHIVV at 6000 and at 240K, then on track 267° to cross HOWLN at 6000 and at 210K, then on track 267°. Expect RADAR vectors to final approach course.

SC-5, 22 FEB 2024 to 21 MAR 2024

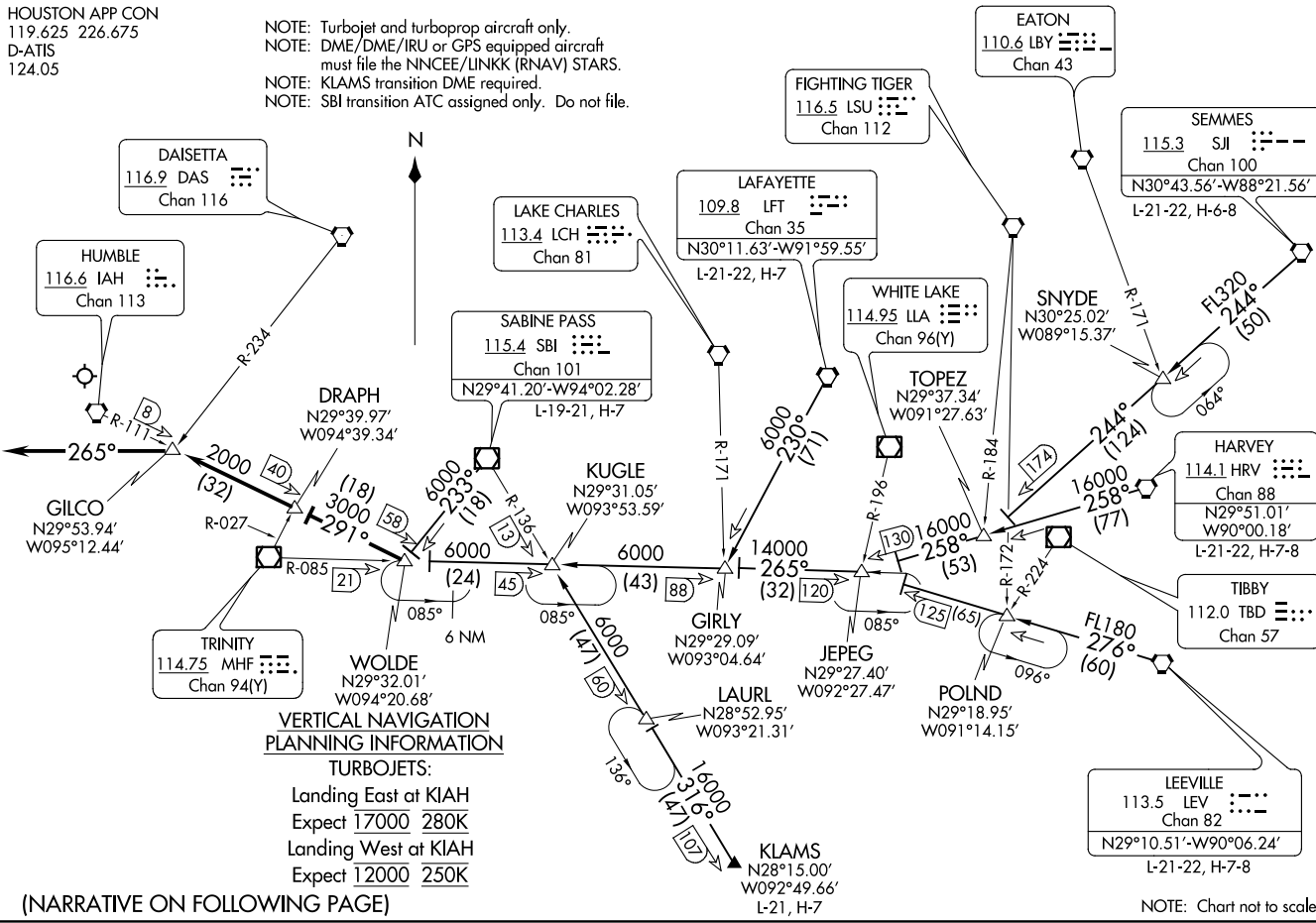
SC-5, 22 FEB 2024 to 21 MAR 2024

GILCO FIVE ARRIVAL
(WOLDE.GILCO5) 100CTT9

GEORGE BUSH INTCNL/HOUSTON (IAH)
HOUSTON, TEXAS

HOUSTON APP CON
119.625 226.675
D-ATIS
124.05

NOTE: Turbojet and turboprop aircraft only.
NOTE: DME/DME/IRU or GPS equipped aircraft
must file the NNCEE/LINKK (RNAV) STARS.
NOTE: KLAMS transition DME required.
NOTE: SBI transition ATC assigned only. Do not file.



**VERTICAL NAVIGATION
PLANNING INFORMATION**
TURBOJET:

Landing East at KIAH
Expect 17000 280K
Landing West at KIAH
Expect 12000 250K

(NARRATIVE ON FOLLOWING PAGE)

NOTE: Chart not to scale.

(WOLDE.GILCO5) 23054
GILCO FIVE ARRIVAL

AL-5461 (FAA)

GEORGE BUSH INTCNL/HOUSTON (IAH)
HOUSTON, TEXAS

ARRIVAL ROUTE DESCRIPTION

HARVEY TRANSITION (HRV.GILCO5): From over HRV VORTAC on HRV R-258 to JEPEG, then on MHF R-085 to WOLDE. Thence

JEPEG TRANSITION (JEPEG.GILCO5): From over JEPEG on MHF R-085 to WOLDE. Thence

KLAMS TRANSITION (KLAMS.GILCO5): From over KLAMS on SBI R-136 to KUGLE, then on MHF R-085 to WOLDE. Thence

LAFAYETTE TRANSITION (LFT.GILCO5): From over LFT VORTAC on LFT R-230 to GIRLY, then on MHF R-085 to WOLDE. Thence

LEEVILLE TRANSITION (LEV.GILCO5): From over LEV VORTAC on LEV R-276 to JEPEG, then on MHF R-085 to WOLDE. Thence

SABINE PASS TRANSITION (SBI.GILCO5): From over SBI VOR/DME on SBI R-233 to WOLDE. Thence

SEMMES TRANSITION (SJI.GILCO5): From SJI VORTAC on SJI R-244 to TOPEZ, then on HRV R-258 to JEPEG, then on MHF R-085 to WOLDE. Thence

. . . .From over WOLDE on IAH R-111 to GILCO.

LANDING RUNWAYS 8L/R, 9:

From GILCO fly heading 265° for vectors to final approach course.

FOR ALL OTHER RUNWAYS:

Expect vectors to final approach course at or prior to GILCO.

SC-5, 22 FEB 2024 to 21 MAR 2024

SC-5, 22 FEB 2024 to 21 MAR 2024

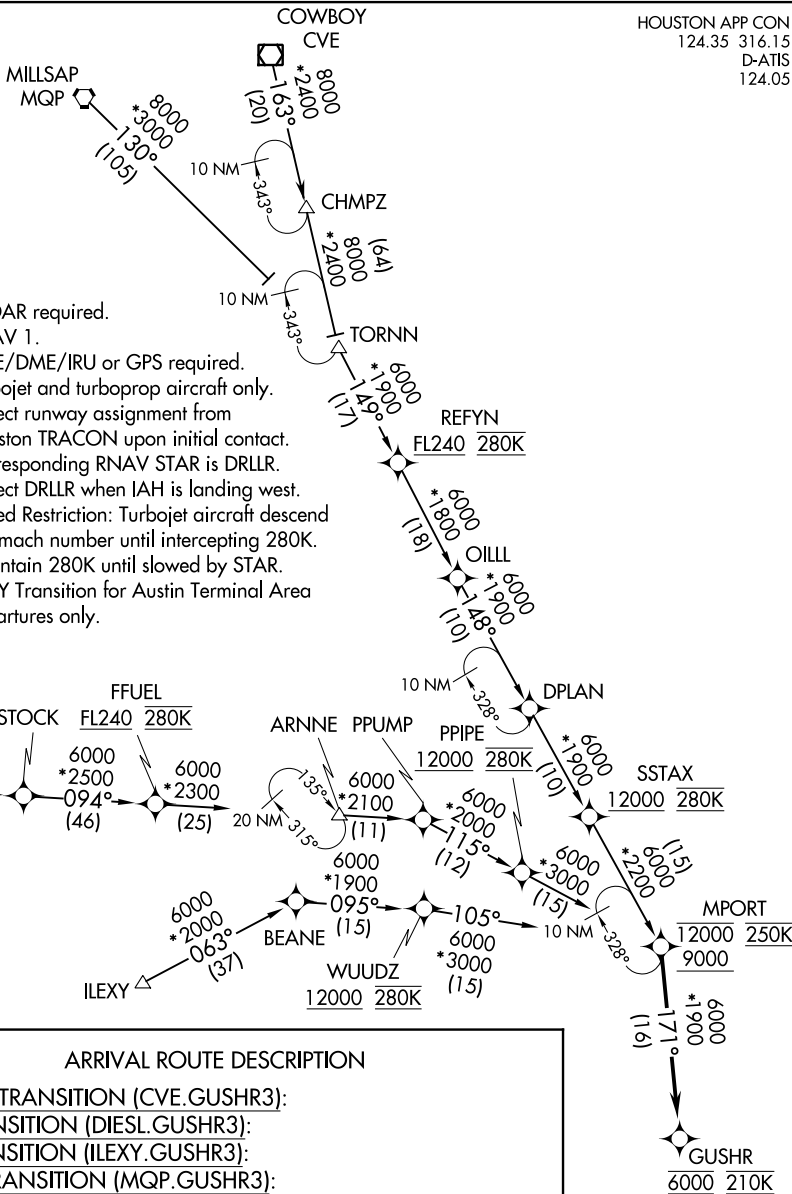
(MPORT.GUSHR3) 21112

GEORGE BUSH INTCNL/HOUSTON (IAH)

GUSHR THREE ARRIVAL (RNAV) AL-5461 (FAA)

HOUSTON, TEXAS

HOUSTON APP CON
124.35 316.15
D-ATIS
124.05



- NOTE: RADAR required.
- NOTE: RNAV 1.
- NOTE: DME/DME/IRU or GPS required.
- NOTE: Turbojet and turboprop aircraft only.
- NOTE: Expect runway assignment from Houston TRACON upon initial contact.
- NOTE: Corresponding RNAV STAR is DRLLR. Expect DRLLR when IAH is landing west.
- NOTE: Speed Restriction: Turbojet aircraft descend via mach number until intercepting 280K. Maintain 280K until slowed by STAR.
- NOTE: ILEXY Transition for Austin Terminal Area departures only.

ARRIVAL ROUTE DESCRIPTION

- COWBOY TRANSITION (CVE.GUSHR3):
- DIESEL TRANSITION (DIESEL.GUSHR3):
- ILEXY TRANSITION (ILEXY.GUSHR3):
- MILLSAP TRANSITION (MQP.GUSHR3):
- OIILL TRANSITION (OIILL.GUSHR3):
- TORNN TRANSITION (TORNN.GUSHR3):

From MPORT on track 171° to cross GUSHR at 6000 and at 210K.
Expect ILS or LOC Rwy 08L.

NOTE: Chart not to scale.

GUSHR THREE ARRIVAL (RNAV)

HOUSTON, TEXAS

(MPORT.GUSHR3) 08JAN15

GEORGE BUSH INTCNL/HOUSTON (IAH)

SC-5, 22 FEB 2024 to 21 MAR 2024

SC-5, 22 FEB 2024 to 21 MAR 2024

(GMANN.HTOWN3) 23278

AL-5461 (FAA)

GEORGE BUSH INTCNL/HOUSTON (IAH)

HTOWN THREE ARRIVAL (RNAV)

HOUSTON, TEXAS

HOUSTON APP CON
119.175 291.675
D-ATIS
124.05

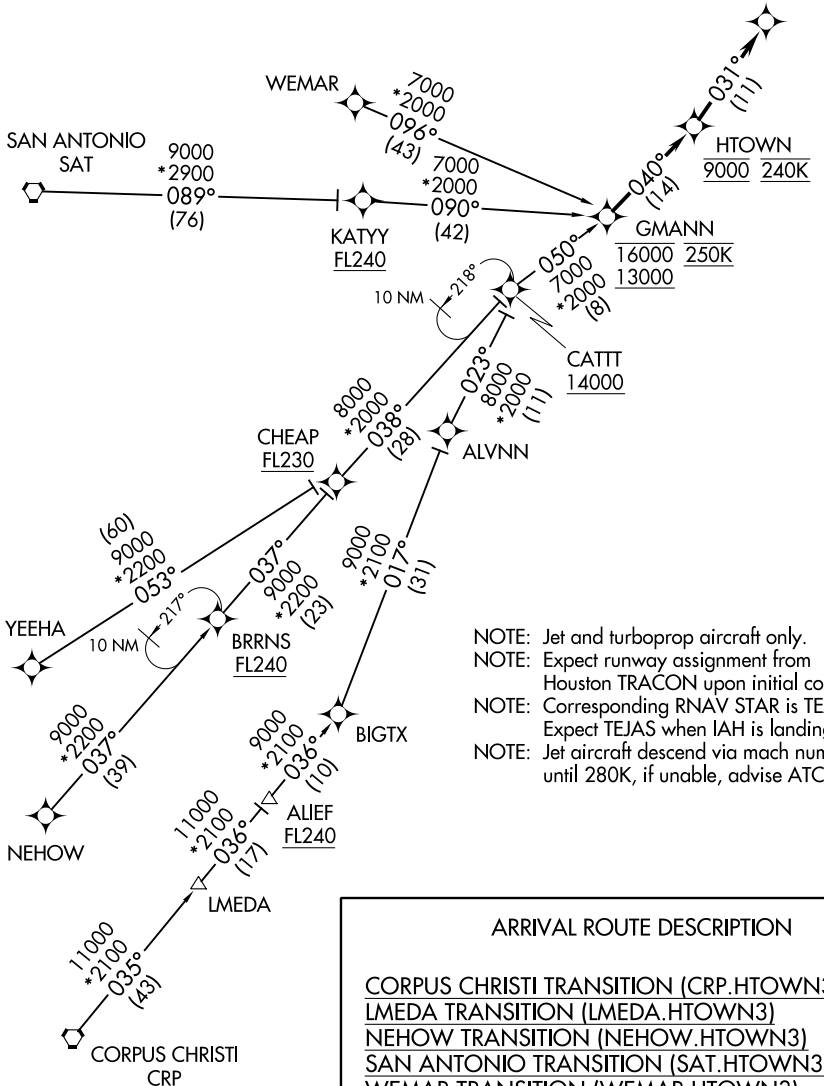
RNAV 1 - DME/DME/IRU or GPS.

RADAR required.

WDLNS

7000 210K

Ldg Rwy 8R



- NOTE: Jet and turboprop aircraft only.
- NOTE: Expect runway assignment from Houston TRACON upon initial contact.
- NOTE: Corresponding RNAV STAR is TEJAS. Expect TEJAS when IAH is landing west.
- NOTE: Jet aircraft descend via mach number until 280K, if unable, advise ATC.

ARRIVAL ROUTE DESCRIPTION

- CORPUS CHRISTI TRANSITION (CRP.HTOWN3)
- LMEDA TRANSITION (LMEDA.HTOWN3)
- NEHOW TRANSITION (NEHOW.HTOWN3)
- SAN ANTONIO TRANSITION (SAT.HTOWN3)
- WEMAR TRANSITION (WEMAR.HTOWN3)
- YEEHA TRANSITION (YEEHA.HTOWN3)

From GMANN on track 040° to cross HTOWN at 9000 and at 240K, then on track 031° to cross WDLNS at 7000 and at 210K. Expect ILS or LOC RWY 8R.

NOTE: Chart not to scale.

SC-5, 22 FEB 2024 to 21 MAR 2024

SC-5, 22 FEB 2024 to 21 MAR 2024

HTOWN THREE ARRIVAL (RNAV)

HOUSTON, TEXAS

(GMANN.HTOWN3) 05OCT23

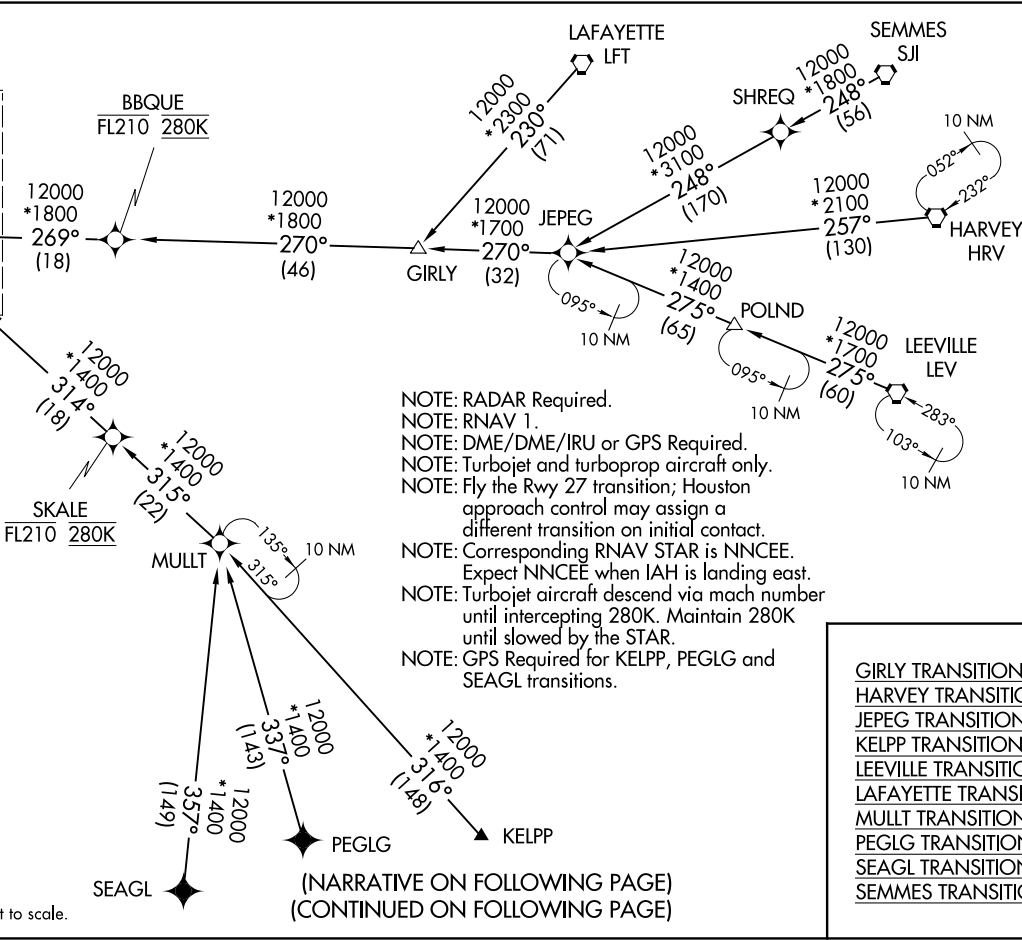
GEORGE BUSH INTCNL/HOUSTON (IAH)

HOUSTON APP CON
119.625 226.675
D-ATIS
124.05

(LINKK.LINKK1) 221.39 AL-5461 (FAA)
GEORGE BUSH INTCNL/HOUSTON (IAH)
HOUSTON, TEXAS

LINKK ONE ARRIVAL (RNAV) Transition Routes
(LINKK.LINKK1) 30APR15
HOUSTON, TEXAS
GEORGE BUSH INTCNL/HOUSTON (IAH)

See following page for Arrival routes.
LINKK
15000 250K
12000



NOTE: RADAR Required.
NOTE: RNAV 1.
NOTE: DME/DME/IRU or GPS Required.
NOTE: Turbojet and turboprop aircraft only.
NOTE: Fly the Rwy 27 transition; Houston approach control may assign a different transition on initial contact.
NOTE: Corresponding RNAV STAR is NNCEE. Expect NNCEE when IAH is landing east.
NOTE: Turbojet aircraft descend via mach number until intercepting 280K. Maintain 280K until slowed by the STAR.
NOTE: GPS Required for KELPP, PEGLG and SEAGL transitions.

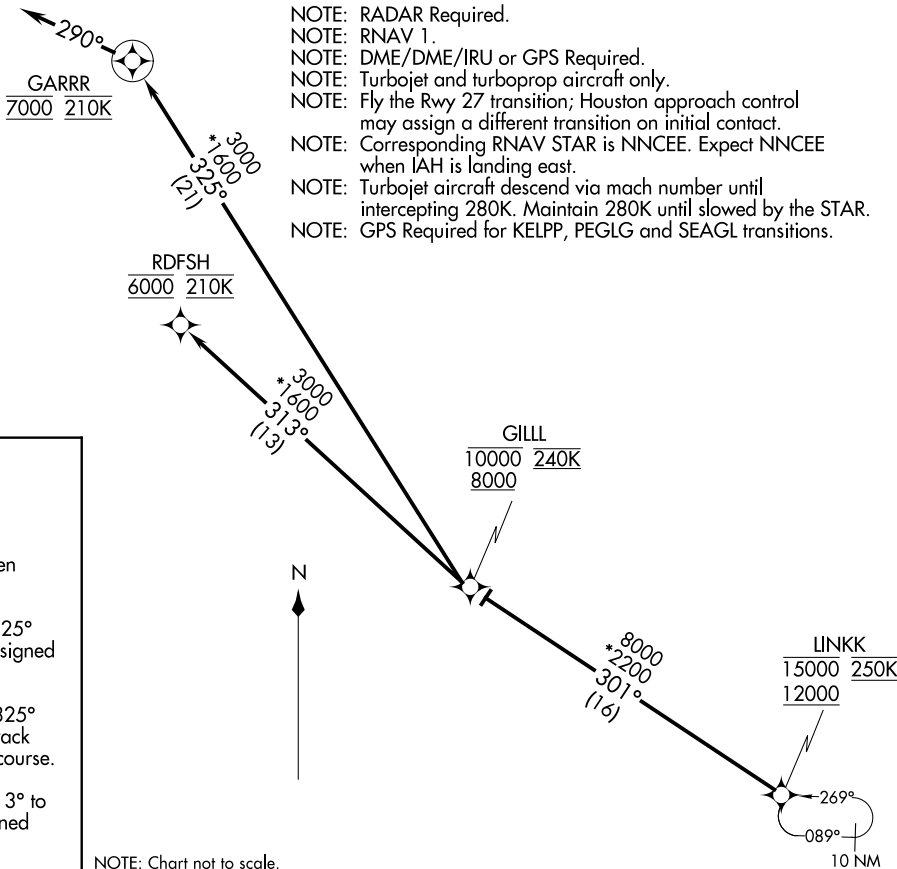
GIRLY TRANSITION (GIRLY.LINKK1);
HARVEY TRANSITION (HRV.LINKK1);
JEPEG TRANSITION (JEPEG.LINKK1);
KELPP TRANSITION (KELPP.LINKK1);
LEEVILLE TRANSITION (LEV.LINKK1);
LAFAYETTE TRANSITION (LFT.LINKK1);
MULT TRANSITION (MULT.LINKK1);
PEGLG TRANSITION (PEGLG.LINKK1);
SEAGL TRANSITION (SEAGL.LINKK1);
SEMMES TRANSITION (SJI.LINKK1);

(NARRATIVE ON FOLLOWING PAGE)
(CONTINUED ON FOLLOWING PAGE)

NOTE: Chart not to scale.

LINKK ONE ARRIVAL (RNAV) Arrival Routes
 (LINKK, LINKK1) 30APR15
 HOUSTON, TEXAS
 GEORGE BUSH INTCNL/HOUSTON (IAH)

HOUSTON APP CON
 119.625 226.675
 D-ATIS
 124.05



- NOTE: RADAR Required.
- NOTE: RNAV 1.
- NOTE: DME/DME/IRU or GPS Required.
- NOTE: Turbojet and turboprop aircraft only.
- NOTE: Fly the Rwy 27 transition; Houston approach control may assign a different transition on initial contact.
- NOTE: Corresponding RNAV STAR is NNCEE. Expect NNCEE when IAH is landing east.
- NOTE: Turbojet aircraft descend via mach number until intercepting 280K. Maintain 280K until slowed by the STAR.
- NOTE: GPS Required for KELPP, PEGLG and SEAGL transitions.

ARRIVAL ROUTE DESCRIPTION

From LINKK on track 301° to cross GILLL between 8000 and 10000 and at 240K.

LANDING RUNWAY 26L: From GILL on track 325° to cross GARRR at 7000 and at 210K. Expect assigned instrument approach RWY 26L.

LANDING RUNWAY 26R: From GILL on track 325° to cross GARRR at 7000 and at 210K, then on track 290° at 210K. Expect vectors to final approach course.

LANDING RUNWAY 27: From GILL on track 313° to cross RDFSH at 6000 and at 210K. Expect assigned instrument approach RWY 27.

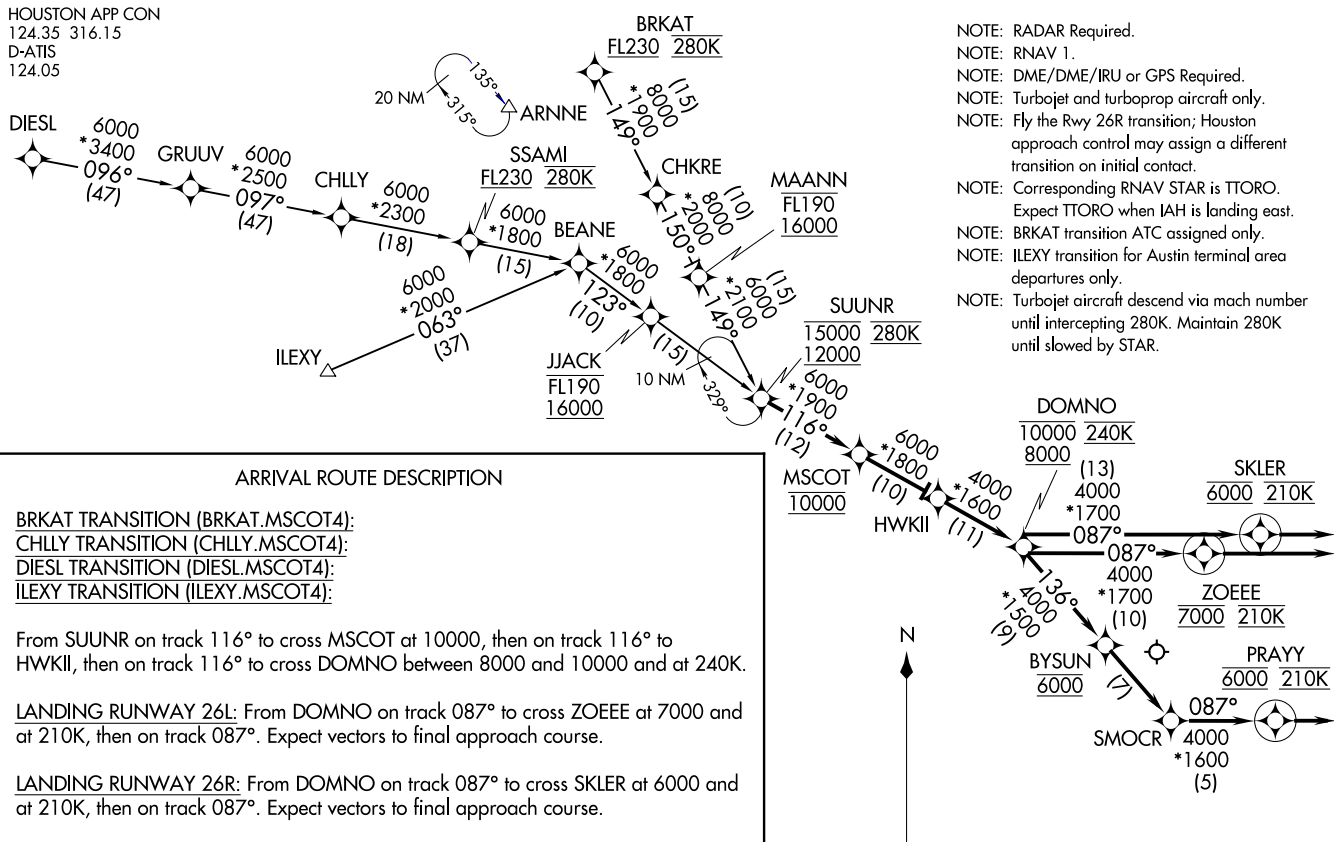
NOTE: Chart not to scale.

(LINKK, LINKK1) 21112
 AL-5461 (FAA)
 GEORGE BUSH INTCNL/HOUSTON (IAH)
 HOUSTON, TEXAS
 LINKK ONE ARRIVAL (RNAV) Arrival Routes

MSCOT FOUR ARRIVAL (RNAV)
(SUUNR.MSCOT4) 30APR15

GEORGE BUSH INTCNL/HOUSTON (IAH)
HOUSTON, TEXAS

HOUSTON APP CON
124.35 316.15
D-ATIS
124.05



- NOTE: RADAR Required.
- NOTE: RNAV 1.
- NOTE: DME/DME/IRU or GPS Required.
- NOTE: Turbojet and turboprop aircraft only.
- NOTE: Fly the Rwy 26R transition; Houston approach control may assign a different transition on initial contact.
- NOTE: Corresponding RNAV STAR is TOTORO. Expect TOTORO when IAH is landing east.
- NOTE: BRKAT transition ATC assigned only.
- NOTE: ILEXY transition for Austin terminal area departures only.
- NOTE: Turbojet aircraft descend via mach number until intercepting 280K. Maintain 280K until slowed by STAR.

ARRIVAL ROUTE DESCRIPTION

- BRKAT TRANSITION (BRKAT.MSCOT4):
- CHLLY TRANSITION (CHLLY.MSCOT4):
- DIESEL TRANSITION (DIESEL.MSCOT4):
- ILEXY TRANSITION (ILEXY.MSCOT4):

From SUUNR on track 116° to cross MSCOT at 10000, then on track 116° to HWKII, then on track 116° to cross DOMNO between 8000 and 10000 and at 240K.

LANDING RUNWAY 26L: From DOMNO on track 087° to cross ZOEEL at 7000 and at 210K, then on track 087°. Expect vectors to final approach course.

LANDING RUNWAY 26R: From DOMNO on track 087° to cross SKLER at 6000 and at 210K, then on track 087°. Expect vectors to final approach course.

LANDING RUNWAY 27: From DOMNO on track 136° to cross BYSUN at 6000, then on track 136° to SMOCR, then on track 087° to cross PRAYY at 6000 and at 210K, then on track 087°. Expect vectors to final approach course.

NOTE: Chart not to scale.

(SUUNR.MSCOT4) 21112
MSCOT FOUR ARRIVAL (RNAV)

GEORGE BUSH INTCNL/HOUSTON (IAH)
HOUSTON, TEXAS

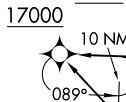
RNAV 1 - DME/DME/IRU or GPS.

RADAR required.

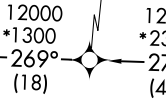
HOUSTON APP CON
119.625 226.675
D-ATIS
124.05

See following page for arrival routes.

LINKK
FL200 280K
17000



BBQUE
FL290 280K



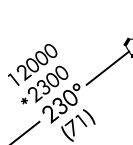
SKALE
FL290 280K



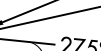
MULLT



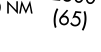
SEAGL



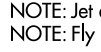
LAFAYETTE
LFT



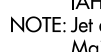
JEPEG



GIRLY



POLND



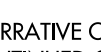
LEEVILLE
LEV



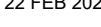
HARVEY
HRV



SHREQ



SEMMES
SJJ



KELPP

PEGLG

SEAGL

PEGLG

SEAGL

PEGLG

SEAGL

PEGLG

SEAGL

PEGLG

SEAGL

PEGLG

SEAGL

PEGLG

SEAGL

PEGLG

SEAGL

PEGLG

SEAGL

PEGLG

SEAGL

PEGLG

SEAGL

PEGLG

SEAGL

PEGLG

SEAGL

PEGLG

SEAGL

PEGLG

SEAGL

PEGLG

SEAGL

PEGLG

SEAGL

PEGLG

SEAGL

PEGLG

SEAGL

PEGLG

SEAGL

PEGLG

SEAGL

PEGLG

SEAGL

PEGLG

SEAGL

PEGLG

SEAGL

PEGLG

SEAGL

PEGLG

SEAGL

PEGLG

SEAGL

PEGLG

SEAGL

PEGLG

SEAGL

PEGLG

SEAGL

PEGLG

SEAGL

PEGLG

SEAGL

PEGLG

SEAGL

PEGLG

SEAGL

PEGLG

SEAGL

PEGLG

SEAGL

PEGLG

SEAGL

PEGLG

SEAGL

PEGLG

SEAGL

PEGLG

SEAGL

PEGLG

SEAGL

PEGLG

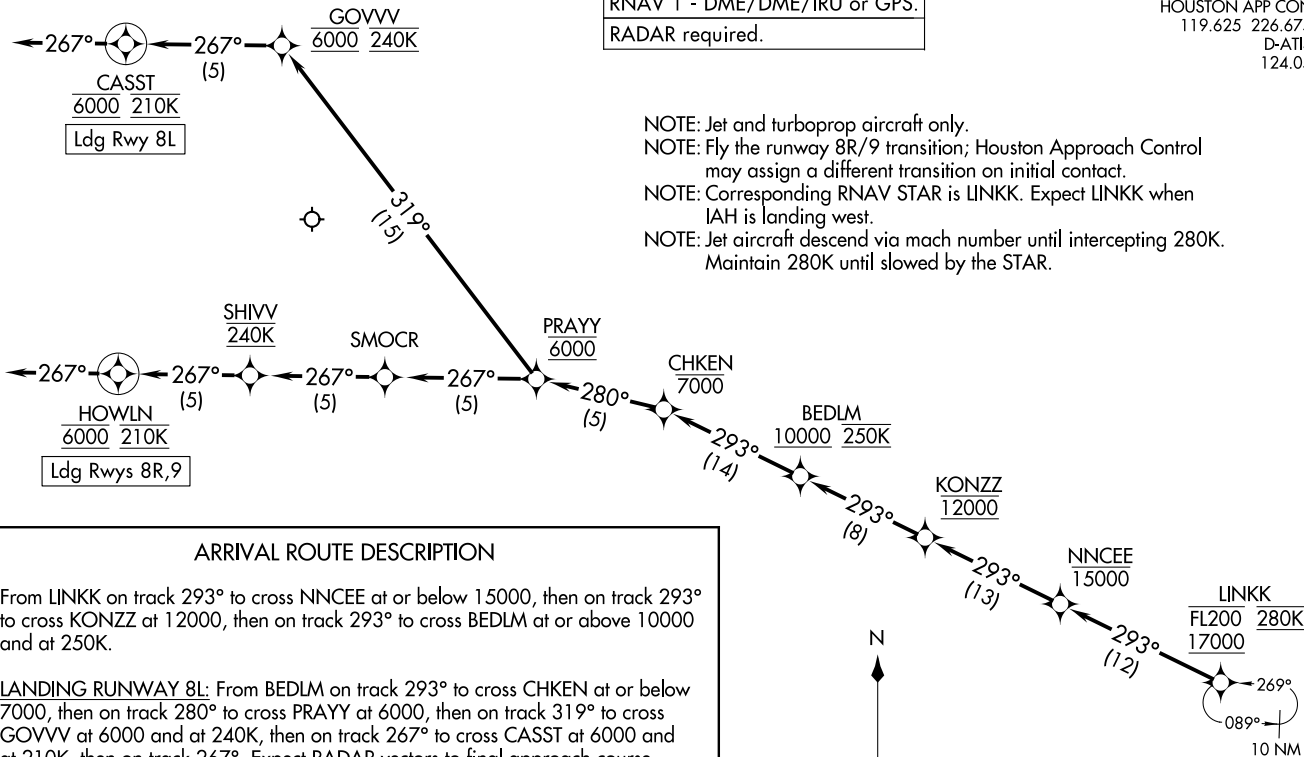
SEAGL

PEGLG

SEAGL

RNAV 1 - DME/DME/IRU or GPS.
RADAR required.

HOUSTON APP CON
119.625 226.675
D-ATIS
124.05



NOTE: Jet and turboprop aircraft only.
NOTE: Fly the runway 8R/9 transition; Houston Approach Control may assign a different transition on initial contact.
NOTE: Corresponding RNAV STAR is LINKK. Expect LINKK when IAH is landing west.
NOTE: Jet aircraft descend via mach number until intercepting 280K. Maintain 280K until slowed by the STAR.

ARRIVAL ROUTE DESCRIPTION

From LINKK on track 293° to cross NNCEE at or below 15000, then on track 293° to cross KONZZ at 12000, then on track 293° to cross BEDLM at or above 10000 and at 250K.

LANDING RUNWAY 8L: From BEDLM on track 293° to cross CHKEN at or below 7000, then on track 280° to cross PRAYY at 6000, then on track 319° to cross GOVVV at 6000 and at 240K, then on track 267° to cross CASST at 6000 and at 210K, then on track 267°. Expect RADAR vectors to final approach course.

LANDING RUNWAYS 8R, 9: From BEDLM on track 293° to cross CHKEN at or below 7000, then on track 280° to cross PRAYY at 6000, then on track 267° to cross SMOCR, then on track 267° to cross SHIVV at 240K, then on track 267° to cross HOWLN at 6000 and at 210K, then on track 267°. Expect RADAR vectors to final approach course.

NOTE: Chart not to scale.

NANCEE TWO ARRIVAL (RNAV) Arrival Routes
(LINKK, NANCEE2) 30NOV23
HOUSTON, TEXAS
GEORGE BUSH INTCNL/HOUSTON (IAH)

(LINKK, NANCEE2) 23334
AL-5461 (FAA)
GEORGE BUSH INTCNL/HOUSTON (IAH)
HOUSTON, TEXAS

OHIO FOUR ARRIVAL
(OHIO.OHIO4) 22JUN17

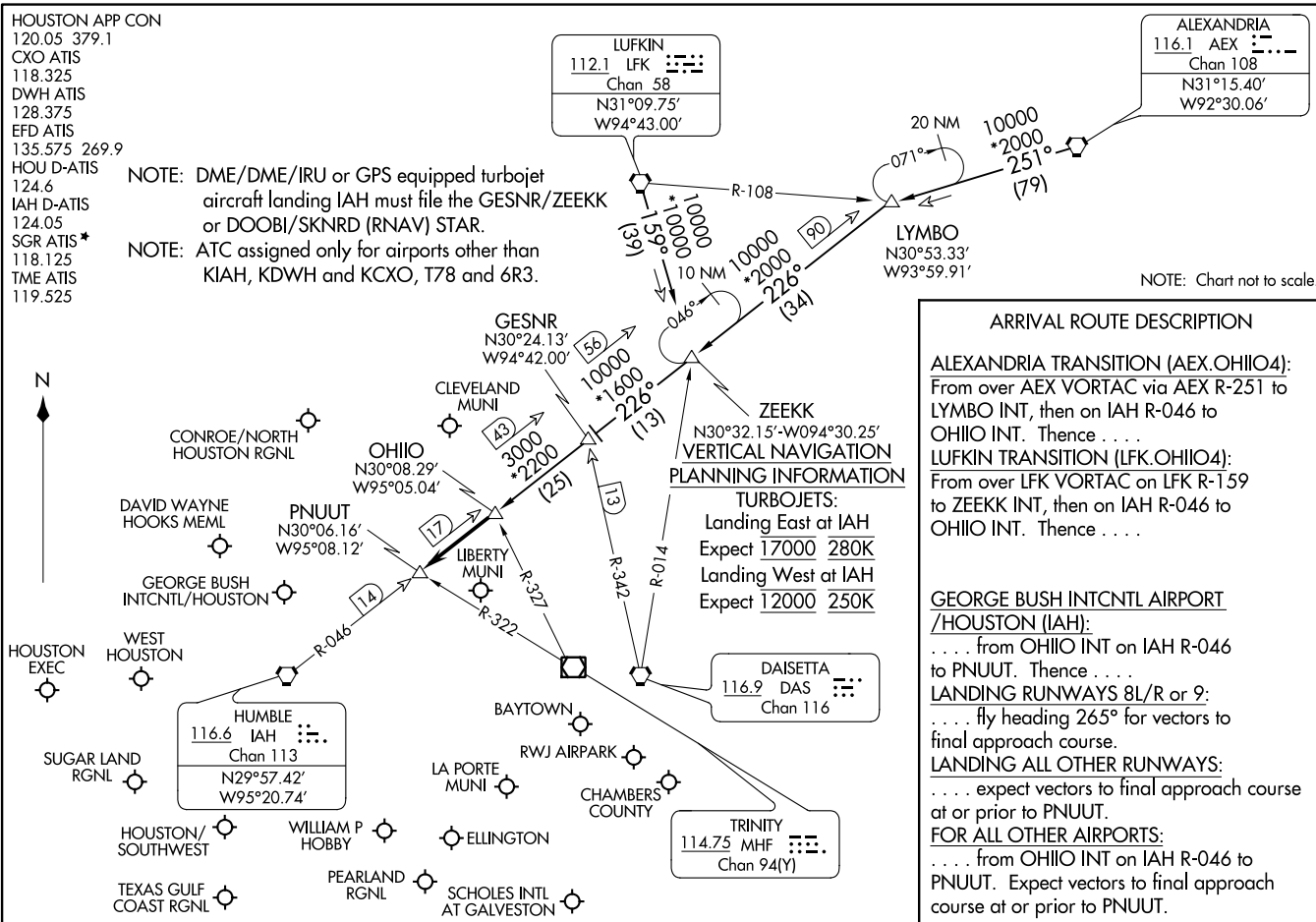
OHIO FOUR ARRIVAL
(OHIO.OHIO4) 23222

HOUSTON APP CON
120.05 379.1
CXO ATIS
118.325
DWH ATIS
128.375
EFD ATIS
135.575 269.9
HOU D-ATIS
124.6
IAH D-ATIS
124.05
SGR ATIS*
118.125
TME ATIS
119.525

NOTE: DME/DME/IRU or GPS equipped turbojet aircraft landing IAH must file the GESNR/ZEEKK or DOOBI/SKNRD (RNAV) STAR.

NOTE: ATC assigned only for airports other than KIAH, KDWH and KCXO, T78 and 6R3.

NOTE: Chart not to scale.



ARRIVAL ROUTE DESCRIPTION

ALEXANDRIA TRANSITION (AEX.OHIO4):
From over AEX VORTAC via AEX R-251 to LYMBO INT, then on IAH R-046 to OHIO INT. Thence . . .

LUFKIN TRANSITION (LFK.OHIO4):
From over LFK VORTAC on LFK R-159 to ZEEKK INT, then on IAH R-046 to OHIO INT. Thence . . .

GEORGE BUSH INTCNL AIRPORT /HOUSTON (IAH):
. . . from OHIO INT on IAH R-046 to PNUUT. Thence . . .

LANDING RUNWAYS 8L/R or 9:
. . . fly heading 265° for vectors to final approach course.

LANDING ALL OTHER RUNWAYS:
. . . expect vectors to final approach course at or prior to PNUUT.

FOR ALL OTHER AIRPORTS:
. . . from OHIO INT on IAH R-046 to PNUUT. Expect vectors to final approach course at or prior to PNUUT.

PLANNING INFORMATION

TURBOJETS:
Landing East at IAH
Expect 17000 280K
Landing West at IAH
Expect 12000 250K

HUMBLE
116.6 IAH
Chan 113
N29°57.42'
W95°20.74'

LUFKIN
112.1 LFK
Chan 58
N31°09.75'
W94°43.00'

ALEXANDRIA
116.1 AEX
Chan 108
N31°15.40'
W92°30.06'

DAISETTA
116.9 DAS
Chan 116

TRINITY
114.75 MHF
Chan 94(Y)

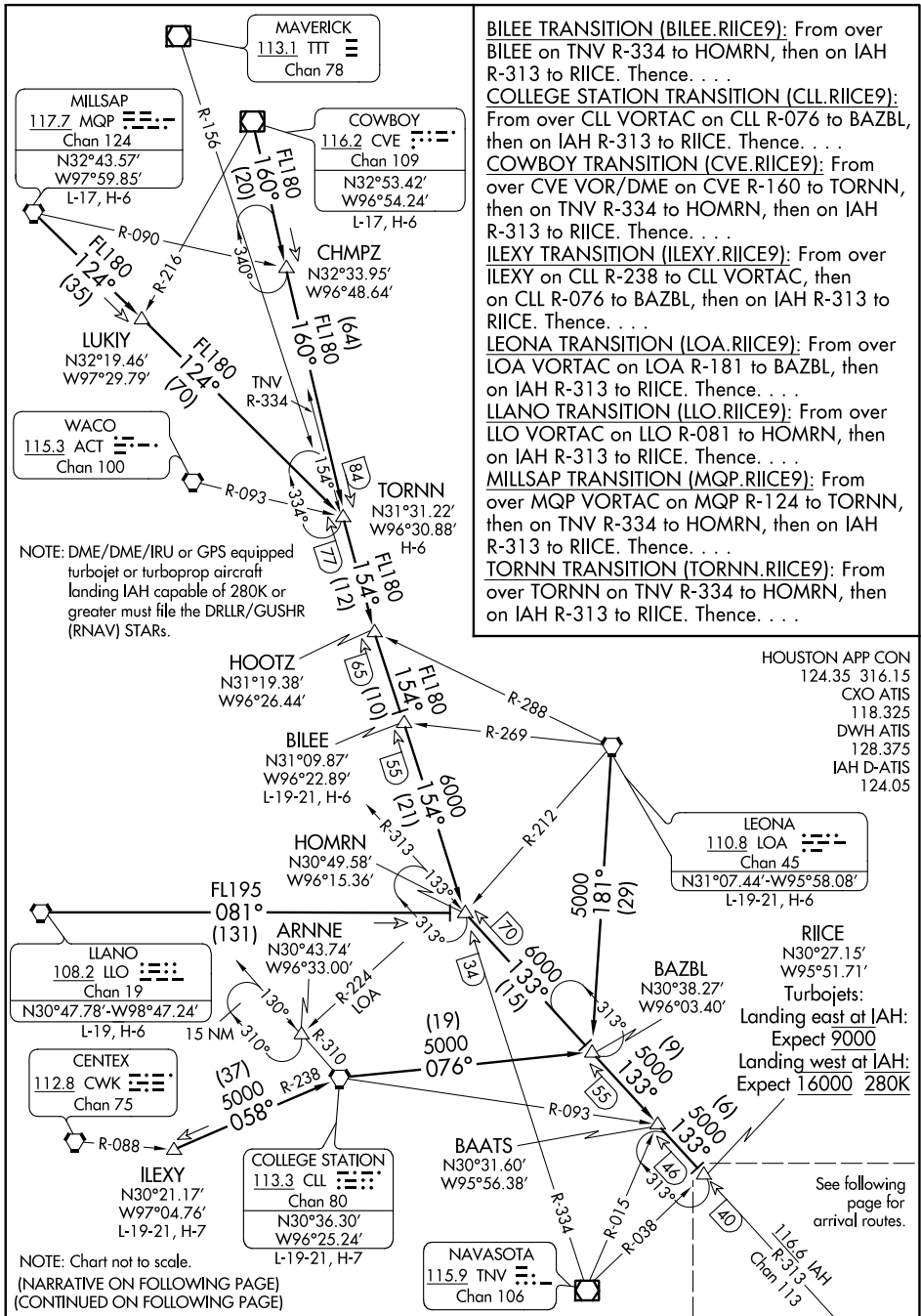
HOUSTON, TEXAS

HOUSTON, TEXAS

RIICE NINE ARRIVAL

Transition Routes

HOUSTON, TEXAS



SC-5, 22 FEB 2024 to 21 MAR 2024

SC-5, 22 FEB 2024 to 21 MAR 2024

RIICE NINE ARRIVAL

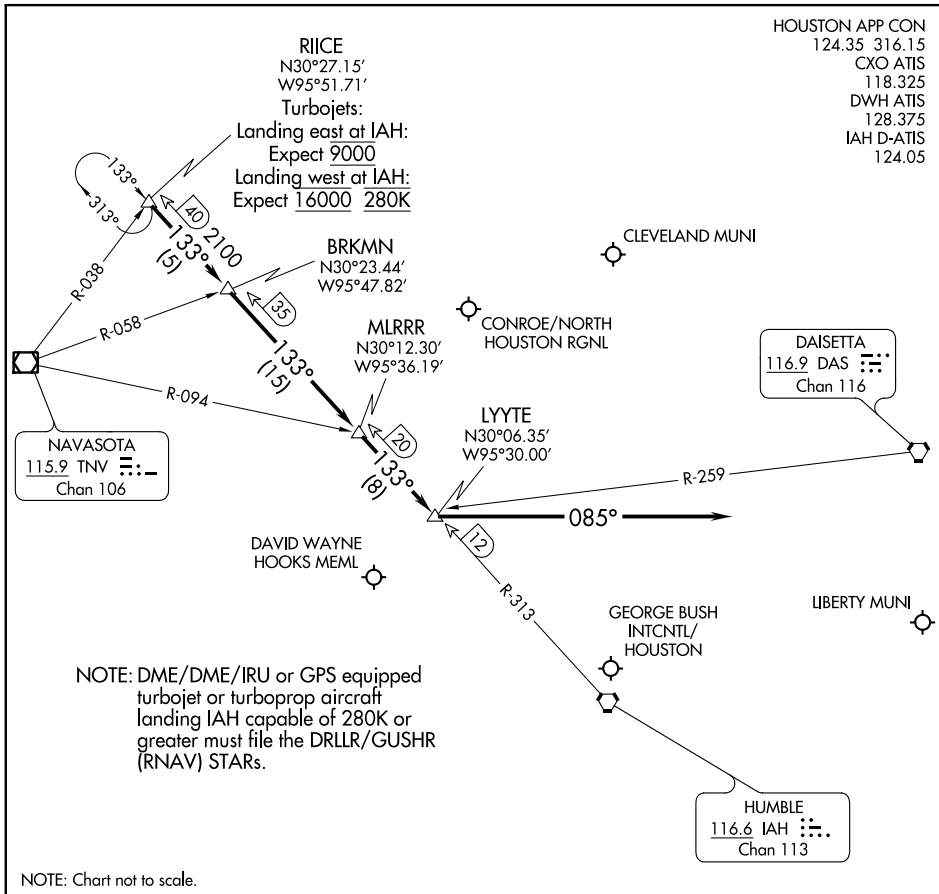
Transition Routes

HOUSTON, TEXAS

RIICE NINE ARRIVAL

Arrival Routes

HOUSTON, TEXAS



SC-5, 22 FEB 2024 to 21 MAR 2024

SC-5, 22 FEB 2024 to 21 MAR 2024

ARRIVAL ROUTE DESCRIPTION

GEORGE BUSH INTCNL/HOUSTON (IAH):

... From over RIICE on IAH R-313 to BRKMN, to MLRRR, to LYYTE.

LANDING RUNWAY 26L/R or 27:

... Fly heading 085° for vectors to final approach course.

LANDING ALL OTHER RUNWAYS:

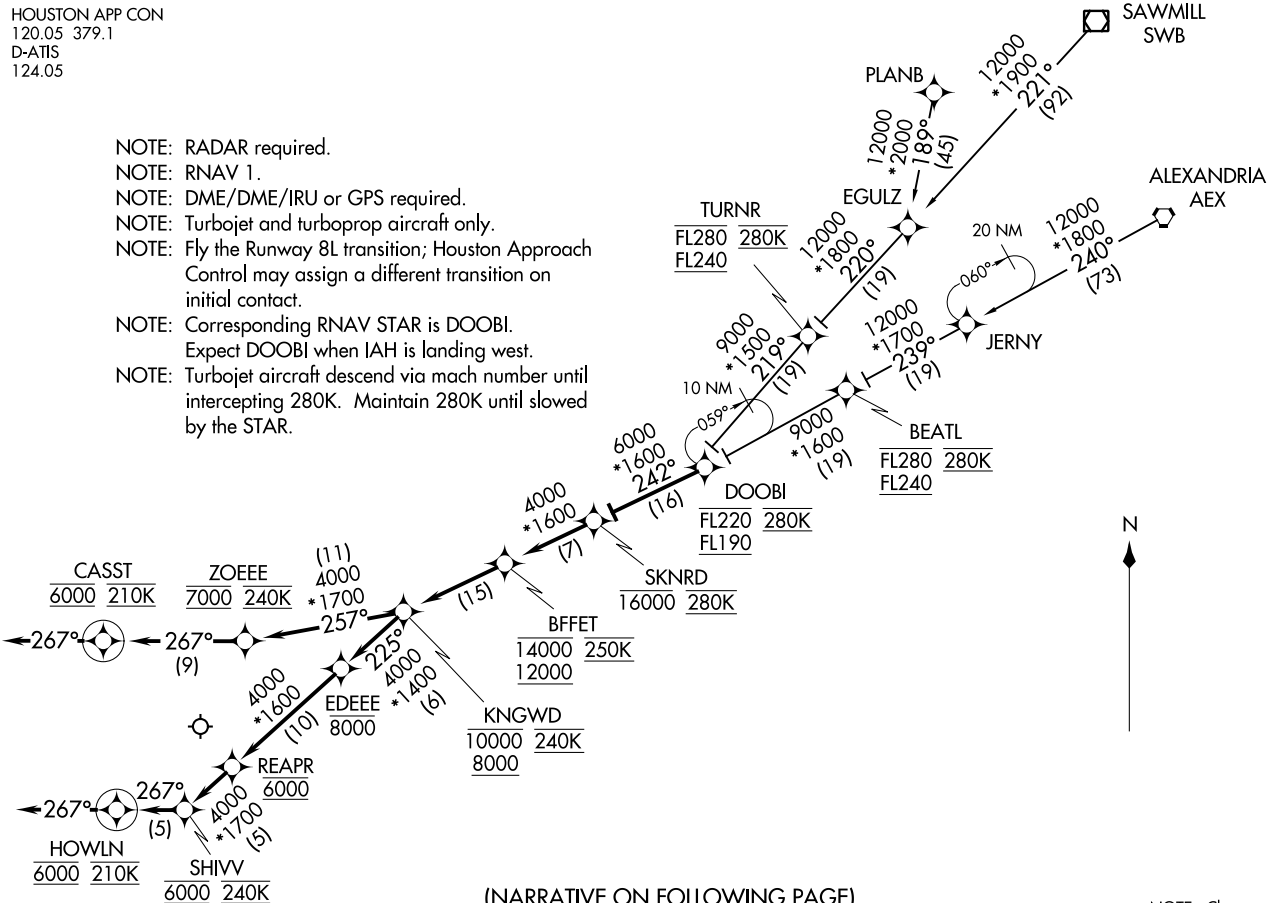
... Expect vectors to final approach course at or prior to LYYTE.

FOR ALL OTHER AIRPORTS:

... From over RIICE on IAH R-313 to BRKMN, thence as depicted to LYYTE expect vectors to final approach course at or prior to LYYTE.

HOUSTON APP CON
120.05 379.1
D-ATIS
124.05

- NOTE: RADAR required.
- NOTE: RNAV 1.
- NOTE: DME/DME/IRU or GPS required.
- NOTE: Turbojet and turboprop aircraft only.
- NOTE: Fly the Runway 8L transition; Houston Approach Control may assign a different transition on initial contact.
- NOTE: Corresponding RNAV STAR is DOOBI.
- NOTE: Expect DOOBI when IAH is landing west.
- NOTE: Turbojet aircraft descend via mach number until intercepting 280K. Maintain 280K until slowed by the STAR.



(NARRATIVE ON FOLLOWING PAGE)

NOTE: Chart not to scale.

SKNRD FOUR ARRIVAL (RNAV)
(DOOBI, SKNRD4) 25JUN15

HOUSTON, TEXAS
GEORGE BUSH INTCNL/HOUSTON (IAH)

(DOOBI, SKNRD4) 21112
SKNRD FOUR ARRIVAL (RNAV) AL-5461 (FAA)
HOUSTON, TEXAS
GEORGE BUSH INTCNL/HOUSTON (IAH)

ARRIVAL ROUTE DESCRIPTION

ALEXANDRIA TRANSITION (AEX.SKNRD4):

PLANB TRANSITION (PLANB.SKNRD4):

SAWMILL TRANSITION (SWB.SKNRD4):

From DOOBI on track 242° to cross SKNRD at or below 16000 and at 280K.

LANDING RUNWAY 8L: From SKNRD on track 242° to cross BFFET at or above 12000 and, at or below 14000 and at 250K, then on track 242° to cross KINGWD at or above 8000, at or below 10000 and at 240K, then on track 257° to cross ZOEEE at 7000 and at 240K, then on track 267° to cross CASST at 6000 and at 210K, then on track 267°. Expect RADAR vectors to final approach course.

LANDING RUNWAYS 8R, 9: From SKNRD on track 242° to cross BFFET at or above 12000, at or below 14000 and at 250K, then on track 242° to cross KINGWD at or above 8000, at or below 10000 and at 240K, then on track 225° to cross EDEEE at or below 8000, then on track 225° to cross REAPR at 6000, then on track 225° to cross SHIVV at 6000 and at 240K, then on track 267° to cross HOWLN at 6000 and at 210K, then on track 267°. Expect RADAR vectors to final approach course.

SC-5, 22 FEB 2024 to 21 MAR 2024

SC-5, 22 FEB 2024 to 21 MAR 2024

SOUL ONE ARRIVAL (RNAV)
(BAYYY.SOULL1) 08JAN15

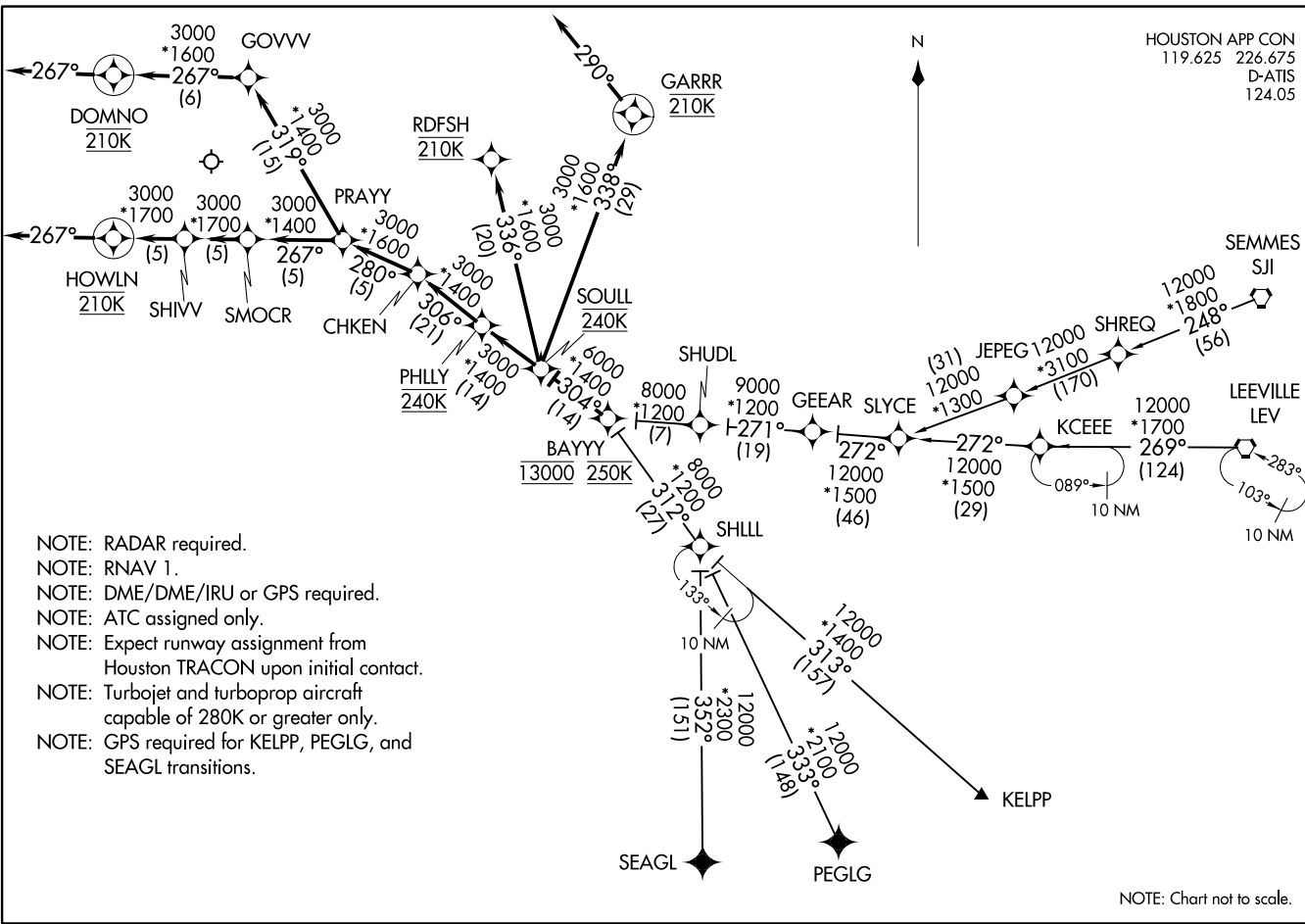
GEORGE BUSH INTCNL/HOUSTON (IAH)
HOUSTON, TEXAS

(BAYYY.SOULL1) 21112
SOUL ONE ARRIVAL (RNAV)

AL-5461 (FAA)

GEORGE BUSH INTCNL/HOUSTON (IAH)
HOUSTON, TEXAS

HOUSTON APP CON
119.625 226.675
D-ATIS
124.05



- NOTE: RADAR required.
- NOTE: RNAV 1.
- NOTE: DME/DME/IRU or GPS required.
- NOTE: ATC assigned only.
- NOTE: Expect runway assignment from Houston TRACON upon initial contact.
- NOTE: Turbojet and turboprop aircraft capable of 280K or greater only.
- NOTE: GPS required for KELPP, PEGLG, and SEAGL transitions.

NOTE: Chart not to scale.

KCEEE TRANSITION (KCEEE.SOULL1):

KELPP TRANSITION (KELPP.SOULL1):

LEEVILLE TRANSITION (LEV.SOULL1):

PEGLG TRANSITION (PEGLG.SOULL1):

SEAGL TRANSITION (SEAGL.SOULL1):

SHLLL TRANSITION (SHLLL.SOULL1):

SEMMES TRANSITION (SJI.SOULL1):

ARRIVAL ROUTE DESCRIPTION

From BAYYY on track 304° to SOULL at 240K.

LANDING RUNWAY 8L: From SOULL on track 304° to PHLLY at 240K, then on track 306° to CHKEN, then on track 280° to PRAYY, then on track 319° to GOVVV, then on track 267° to DOMNO at 210K, then on track 267° at 210K. Expect vectors to final approach course.

LANDING RUNWAY 8R: From SOULL on track 304° to PHLLY at 240K, then on track 306° to CHKEN, then on track 280° to PRAYY, then on track 267° to SMOCR, then on track 267° to SHIVV, then on track 267° to HOWLN at 210K, then on track 267°. Expect vectors to final approach course.

LANDING RUNWAY 9: From SOULL on track 304° to PHLLY at 240K, then on track 306° to CHKEN, then on track 280° to PRAYY, then on track 267° to SMOCR, then on track 267° to SHIVV, then on track 267° to HOWLN at 210K, then on track 267°. Expect vectors to final approach course.

LANDING RUNWAY 26L: From SOULL on track 338° to GARRR at 210K. Expect ILS or LOC Rwy 26L.

LANDING RUNWAY 26R: From SOULL on track 338° to GARRR at 210K, then on track 290° at 210K. Expect vectors to final approach course.

LANDING RUNWAY 27: From SOULL on track 336° to RDFSH at 210K. Expect ILS or LOC Rwy 27.

SC-5, 22 FEB 2024 to 21 MAR 2024

SC-5, 22 FEB 2024 to 21 MAR 2024

TEJAS FIVE ARRIVAL (RNAV) Transition Routes

HOUSTON, TEXAS

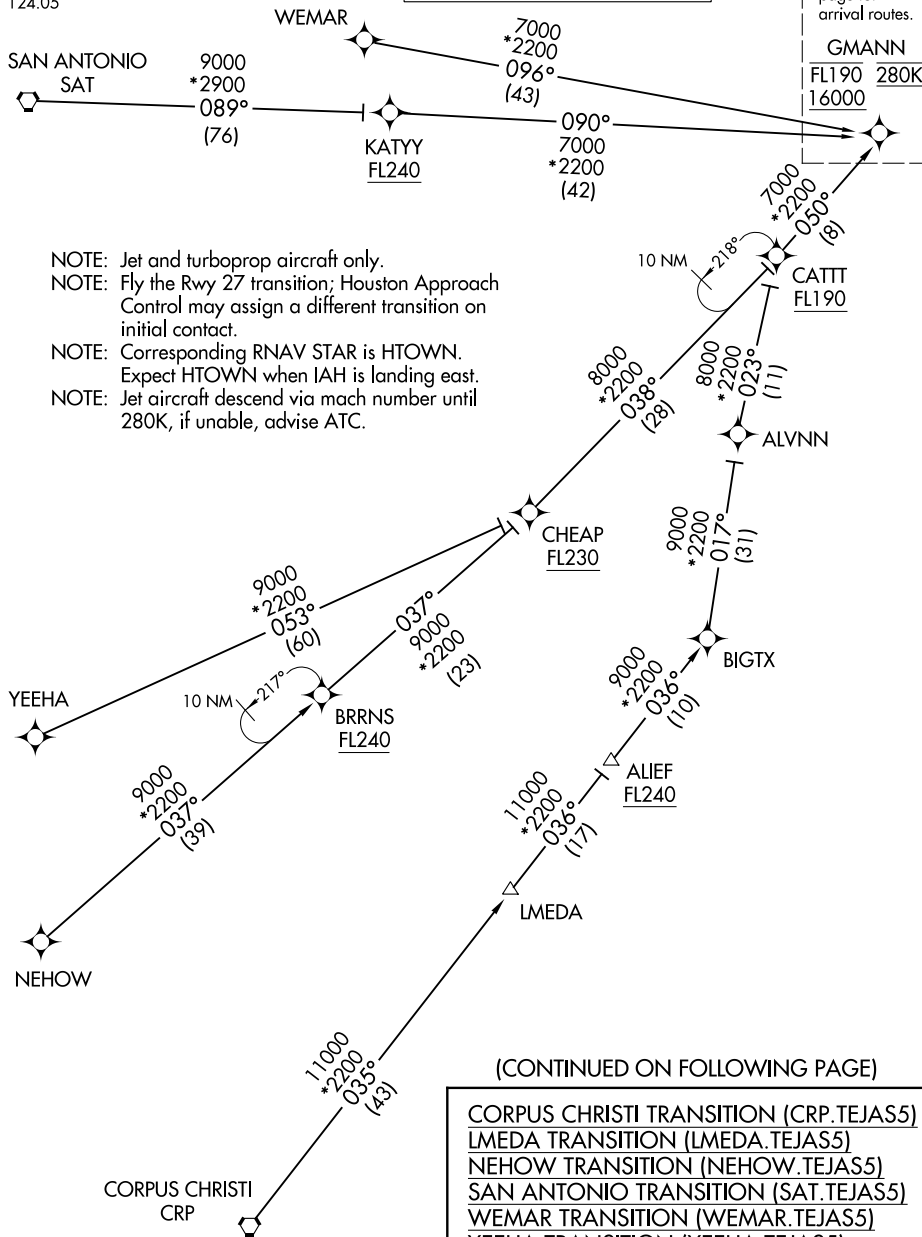
HOUSTON APP CON
119.175 291.675
D-ATIS
124.05

RNAV 1 - DME/DME/IRU or GPS.

RADAR required.

See following page for arrival routes.

GMANN
FL190 280K
16000



- NOTE: Jet and turboprop aircraft only.
- NOTE: Fly the Rwy 27 transition; Houston Approach Control may assign a different transition on initial contact.
- NOTE: Corresponding RNAV STAR is HTOWN. Expect HTOWN when IAH is landing east.
- NOTE: Jet aircraft descend via mach number until 280K, if unable, advise ATC.

SC-5, 22 FEB 2024 to 21 MAR 2024

SC-5, 22 FEB 2024 to 21 MAR 2024

(CONTINUED ON FOLLOWING PAGE)

CORPUS CHRISTI TRANSITION (CRP.TEJAS5)
 LMEDA TRANSITION (LMEDA.TEJAS5)
 NEHOW TRANSITION (NEHOW.TEJAS5)
 SAN ANTONIO TRANSITION (SAT.TEJAS5)
 WEMAR TRANSITION (WEMAR.TEJAS5)
 YEEHA TRANSITION (YEEHA.TEJAS5)

NOTE: Chart not to scale.

TEJAS FIVE ARRIVAL (RNAV) Transition Routes

HOUSTON, TEXAS

ARRIVAL ROUTE DESCRIPTION

From GMANN on track 058° to cross CITTE at or below 16000, then on track 059° to cross TEJAS between 12000 and 14000 and at 250K.

LANDING RUNWAY 26L: From TEJAS on track 059° to cross RIDLR at or below 10000, then on track 059° to cross BEEEP at or below 8000, then on track 059° to cross HOWLN at 6000 and at 240K, then on track 087° to SMOCR, then on track 087° to cross PRAYY at 6000 and at 210K, then on track 087°. Expect RADAR vectors to final approach course.

LANDING RUNWAY 26R: From TEJAS on track 059° to cross RIDLR at or below 10000, then on track 059° to cross BEEEP at or below 8000, then on track 059° to cross HOWLN at 6000 and at 240K, then on track 034° to ZOEER, then on track 087° to cross SKLER at 6000 and at 210K, then on track 087°. Expect RADAR vectors to final approach course.

LANDING RUNWAY 27: From TEJAS on track 059° to cross RIDLR at or below 10000, then on track 059° to cross BEEEP at or below 8000, then on track 059° to cross HOWLN at 6000 and at 240K, then on track 087° to SHIVV, then on track 087° to SMOCR, then on track 087° to cross PRAYY at 6000 and at 210K, then on track 087°. Expect RADAR vectors to final approach course.

RNAV 1 - DME/DME/IRU or GPS.

RADAR required.

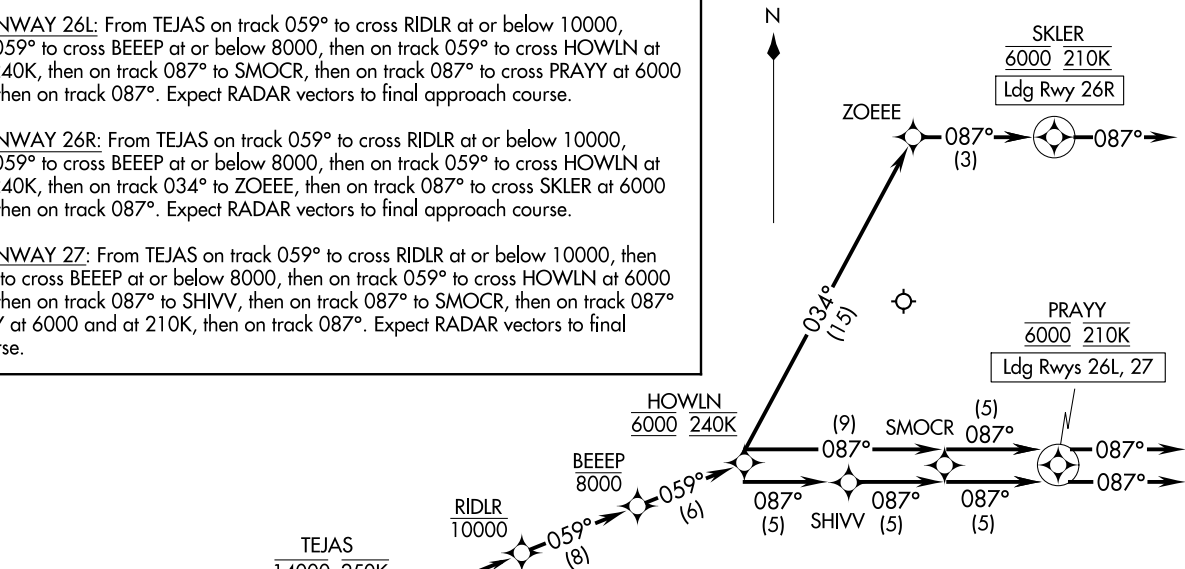
HOUSTON APP CON
119.175 291.675
D-ATIS
124.05

TEJAS FIVE ARRIVAL (RNAV) Arrival Routes
(GMANN, TEJAS5) 05OCT23

HOUSTON, TEXAS
GEORGE BUSH INTL/HOUSTON (IAH)

(GMANN, TEJAS5) 23278
TEJAS FIVE ARRIVAL (RNAV) Arrival Routes

AL-5461 (FAA)
GEORGE BUSH INTL/HOUSTON (IAH)
HOUSTON, TEXAS



NOTE: Chart not to scale.

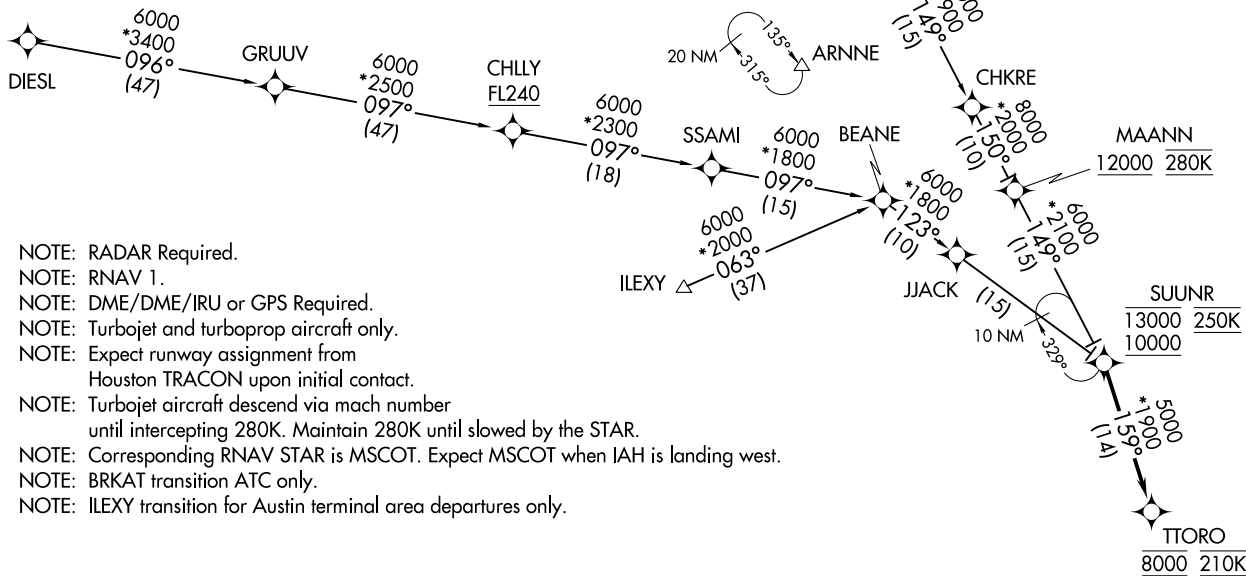
- NOTE: Jet and turboprop aircraft only.
- NOTE: Fly the Rwy 27 transition; Houston Approach Control may assign a different transition on initial contact.
- NOTE: Corresponding RNAV STAR is HTOWN. Expect HTOWN when IAH is landing east.
- NOTE: Jet aircraft descend via mach number until 280K, if unable, advise ATC.

ARRIVAL ROUTE DESCRIPTION

BRKAT TRANSITION (BRKAT.TTORO3):
CHLLY TRANSITION (CHLLY.TTORO3):
DIESL TRANSITION (DIESL.TTORO3):
ILEXY TRANSITION (ILEXY.TTORO3):

From SUUNR on track 159° to cross TTORO at 8000 and at 210K.
 Expect ILS or LOC RWY 8R.

HOUSTON APP CON
 124.35 316.15
 D-ATIS
 124.05



- NOTE: RADAR Required.
- NOTE: RNAV 1.
- NOTE: DME/DME/IRU or GPS Required.
- NOTE: Turbojet and turboprop aircraft only.
- NOTE: Expect runway assignment from Houston TRACON upon initial contact.
- NOTE: Turbojet aircraft descend via mach number until intercepting 280K. Maintain 280K until slowed by the STAR.
- NOTE: Corresponding RNAV STAR is MSCOT. Expect MSCOT when IAH is landing west.
- NOTE: BRKAT transition ATC only.
- NOTE: ILEXY transition for Austin terminal area departures only.

NOTE: Chart not to scale.

TTORO THREE ARRIVAL (RNAV)
 (SUUNR.TTORO3) 30APR15

HOUSTON, TEXAS
 GEORGE BUSH INTCNL/HOUSTON (IAH)

(SUUNR.TTORO3) 21112
 TTORO THREE ARRIVAL (RNAV)

AL-5461 (FAA)

HOUSTON, TEXAS
 GEORGE BUSH INTCNL/HOUSTON (IAH)

ARRIVAL ROUTE DESCRIPTION

ALEXANDRIA TRANSITION (AEX.ZEEKK2)

CARPR TRANSITION (CARPR.ZEEKK2)

PLANB TRANSITION (PLANB.ZEEKK2)

SAWMILL TRANSITION (SWB.ZEEKK2)

From ZEEKK on track 211° to cross BLUUZ at or below 10000 and at 240K.

LANDING RUNWAY 26L: From BLUUZ on track 191° to cross ODISS at or above 8000 and at 210K, then on track 216° to cross BOZZZ at 8000 and at 210K. Expect ILS or LOC RWY 26L approach.

LANDING RUNWAY 26R: From BLUZZ on track 194° to cross TABRR between 6000 and 7000, then on track 194° to cross HOOTI at 6000 and at 210K. Expect ILS or LOC RWY 26R approach.

LANDING RUNWAY 27: From BLUUZ on track 172° to cross PPUNK at or below 8000, then on track 172° to cross VZEEE at or above 6000, then on track 172° to SOFFT, then on track 185° to cross CLSIK at 4000 and at 210K. Expect ILS or LOC RWY 27 approach.

SC-5, 22 FEB 2024 to 21 MAR 2024

SC-5, 22 FEB 2024 to 21 MAR 2024