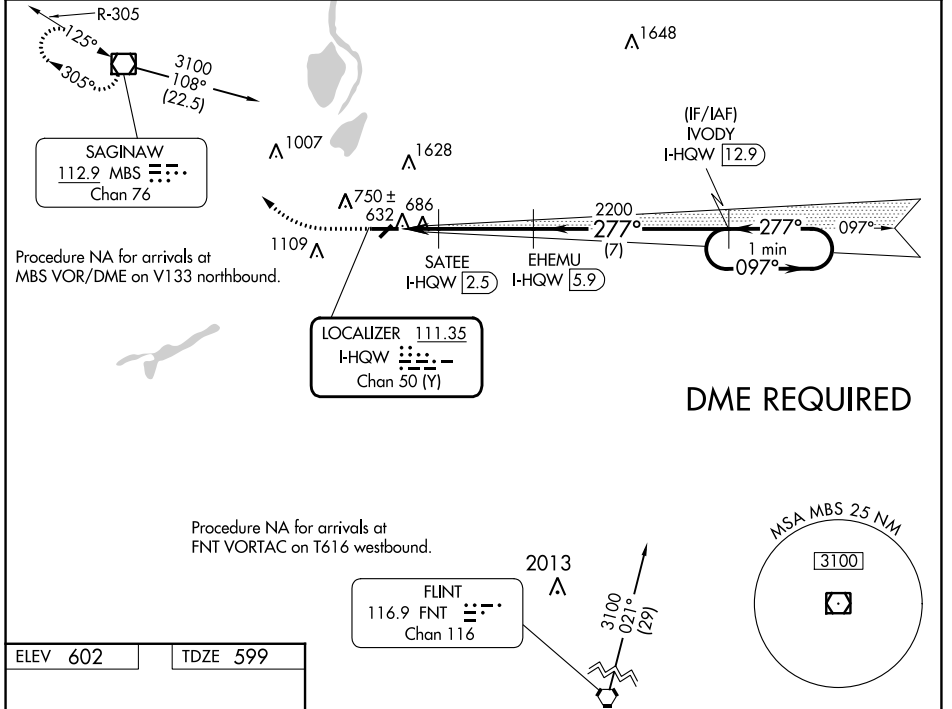


LOC/DME I-HQW 111.35 Chan 50 (Y)	APP CRS 277°	Rwy Idg TDZE Apt Elev	5002 599 602
--	------------------------	-----------------------------	---

ILS or LOC RWY 28

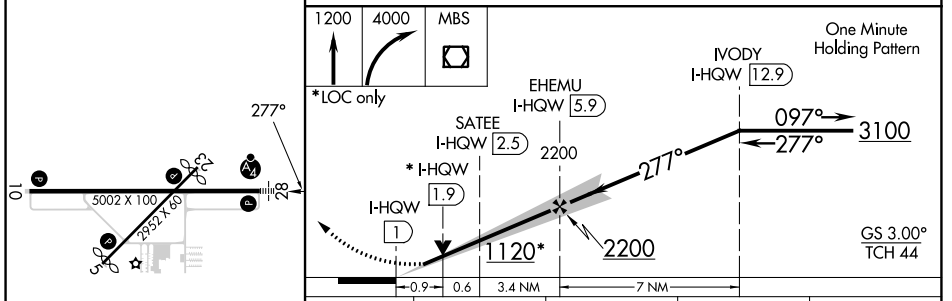
SAGINAW COUNTY/H W BROWNE (HYX)

<p>NA Inoperative table does not apply to S-ILS 28. DME required. Circling Rwy 5, 23 NA at night. Circling NA for Cat C north of Rwy 10-28.</p>	<p>MALSF </p>	<p>MISSED APPROACH: Climb to 1200 then climbing right turn to 4000 direct MBS VOR/DME and hold, continue climb-in-hold to 4000.</p>
<p>AWOS-3PT 118.325</p>	<p>GREAT LAKES APP CON ★ 120.95 235.625</p>	<p>UNICOM 122.8 (CTAF) 0</p>



DME REQUIRED

ELEV 602	TDZE 599
----------	----------



CATEGORY	A	B	C	D
S-ILS 28		802- ³ / ₄	203 (200- ³ / ₄)	NA
S-LOC 28		940- ³ / ₄	341 (400- ³ / ₄)	NA
CIRCLING	1100-1	498 (500-1)	1460-2 ¹ / ₂ 858 (900-2 ¹ / ₂)	NA

REIL Rwy 10
HIRL Rwy 10-28
MIRL Rwy 5-23

EC-1, 22 FEB 2024 to 21 MAR 2024

EC-1, 22 FEB 2024 to 21 MAR 2024

RNAV (GPS) RWY 10

SAGINAW COUNTY/H W BROWNE (HYX)

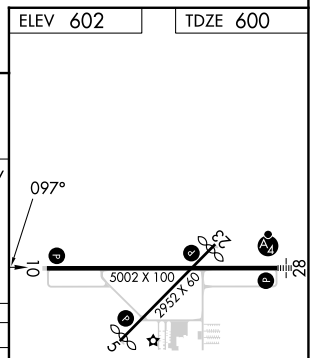
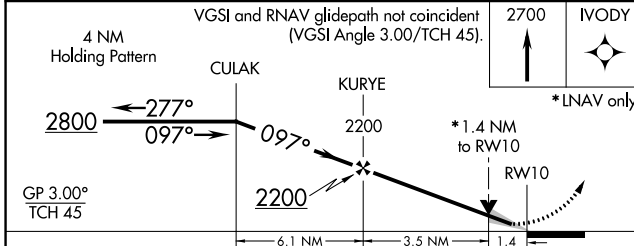
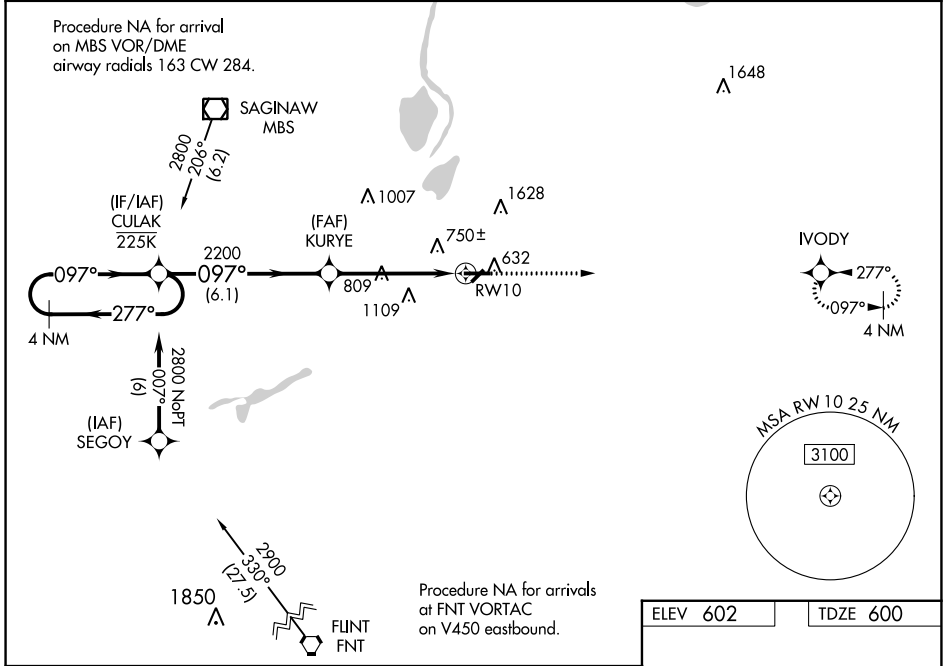
WAAS CH 50200 W10A	APP CRS 097°	Rwy Idg 5002
		TDZE 600
		Apt Elev 602

RNP APCH - GPS.

⚠ For uncompensated Baro-VNAV systems, LNAV/VNAV NA below -18°C or above 54°C. Circling NA for Cat C north of Rwy 10-28.
Circling Rwy 5, 23 NA at night.

MISSED APPROACH: Climb to 2700 direct IVODY and hold.

AWOS-3PT 118.325	GREAT LAKES APP CON ★ 120.95 235.625	UNICOM 122.8 (CTAF) 0
----------------------------	--	---------------------------------



CATEGORY	A	B	C	D
LPV DA	800-3/4	200 (200-3/4)		NA
LNAV/VNAV DA	1018-13/8	418 (500-13/8)		NA
LNAV MDA	1060-1	460 (500-1)	1060-13/8 460 (500-13/8)	NA
C CIRCLING	1100-1	498 (500-1)	1460-21/2 858 (900-21/2)	NA

REIL Rwy 10 0

HIRL Rwy 10-28 0

MIRL Rwy 5-23 0

RNAV (GPS) RWY 10

EC-1, 22 FEB 2024 to 21 MAR 2024

EC-1, 22 FEB 2024 to 21 MAR 2024

WAAS CH 90200 W28A	APP CRS 277°	Rwy Idg TDZE Apt Elev	5002 599 602
--	------------------------	-----------------------------	---

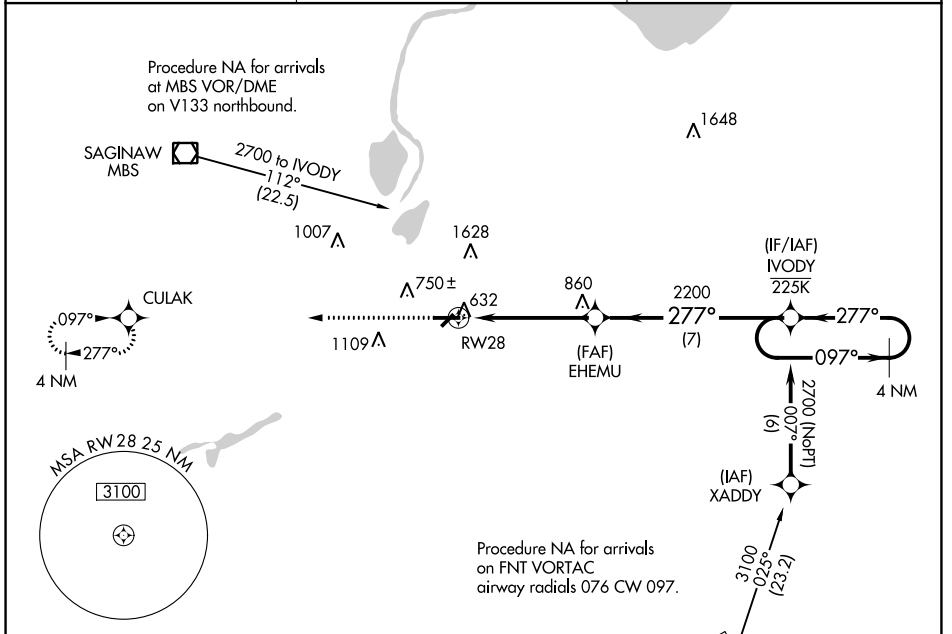
RNAV (GPS) RWY 28

SAGINAW COUNTY/H W BROWNE (HYX)

⚠ Inop table does not apply to LPV DA. For uncompensated Baro-VNAV systems, LNAV/VNAV NA below -18°C (0°F) or above 54°C (130°F). Circling NA for Cat C north of Rwy 10-28. Circling Rwy 5, 23 NA at night. DME/DME RNP-0.3 NA. For inop ALS, increase LNAV/VNAV all Cats visibility to ½ SM.

MALSF MISSED APPROACH: Climb to 2800 direct CULAK and hold.

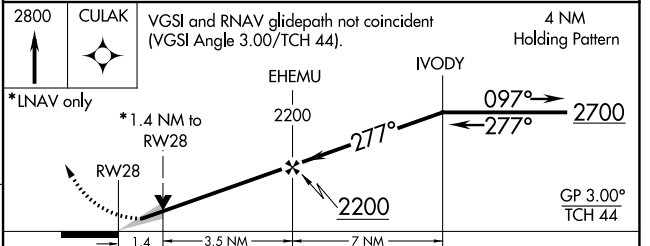
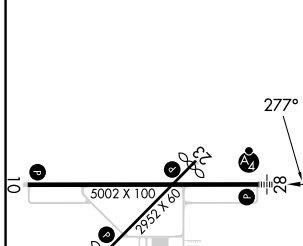
AWOS-3PT 118.325	GREAT LAKES APP CON* 120.95 235.625	UNICOM 122.8 (CTAF) 0
----------------------------	---	---------------------------------



EC-1, 22 FEB 2024 to 21 MAR 2024

EC-1, 22 FEB 2024 to 21 MAR 2024

ELEV 602	TDZE 599
----------	----------



CATEGORY	A	B	C	D
LPV DA	804-¾	205 (300-¾)		NA
LNAV/VNAV DA	849-¾	250 (300-¾)		NA
LNAV MDA	1080-¾	481 (500-¾)	1080-1½ 481 (500-1½)	NA
CIRCLING	1100-1	498 (500-1)	1460-2½ 858 (900-2½)	NA

- REIL Rwy 10
- HIRL Rwy 10-28
- MIRL Rwy 5-23

SAGINAW, MICHIGAN

AL-6474 (FAA)

24025

VOR/DME MBS 112.9 Chan 76	APP CRS 125°	Rwy Idg TDZE Apt Elev	N/A N/A 602
---	------------------------	-----------------------------	--

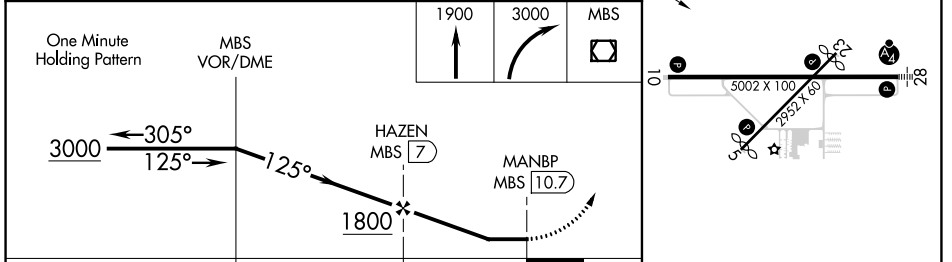
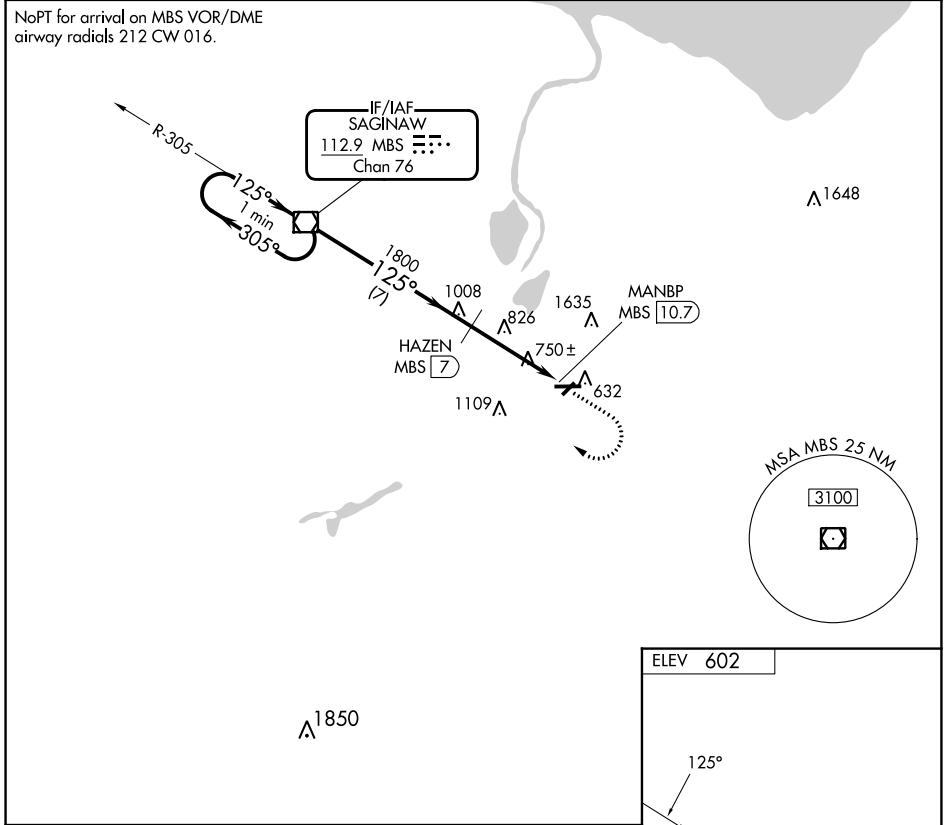
VOR/DME-A

SAGINAW COUNTY/H W BROWNE (HYX)

⚠ Circling to Rwy 5/23 NA at night. When local altimeter setting not received, use Saginaw MBS Intl altimeter setting and increase all MDA 40 feet and increase Circling Cat C visibility ¼ SM. Circling NA for Cat C north of Rwy 10-28.

MISSED APPROACH: Climb to 1900 then climbing right turn to 3000 direct MBS VOR/DME and hold.

AWOS-3PT 118,325	GREAT LAKES APP CON ★ 120,95 235,625	UNICOM 122.8 (CTAF) 0
----------------------------	--	---------------------------------



CATEGORY	A	B	C	D	REIL Rwy 10 0 HIRL Rwy 10-28 0 MIRL Rwy 5-23 0
C CIRCLING	1160-1	558 (600-1)	1460-2½ 858 (900-2½)	NA	

SAGINAW, MICHIGAN
Amdt 4A 18JUN20

SAGINAW COUNTY/H W BROWNE (HYX)

43°26'N - 83°52'W

VOR/DME-A

EC-1, 22 FEB 2024 to 21 MAR 2024

EC-1, 22 FEB 2024 to 21 MAR 2024