



LOC/DME I-HYA <b>109.15</b>	APP CRS <b>246°</b>	Rwy Idg TDZE	<b>5425</b> <b>43</b>
Chan <b>28 (Y)</b>		Apt Elev	<b>54</b>

# ILS or LOC RWY 24

CAPE COD GATEWAY (HYA)

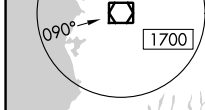
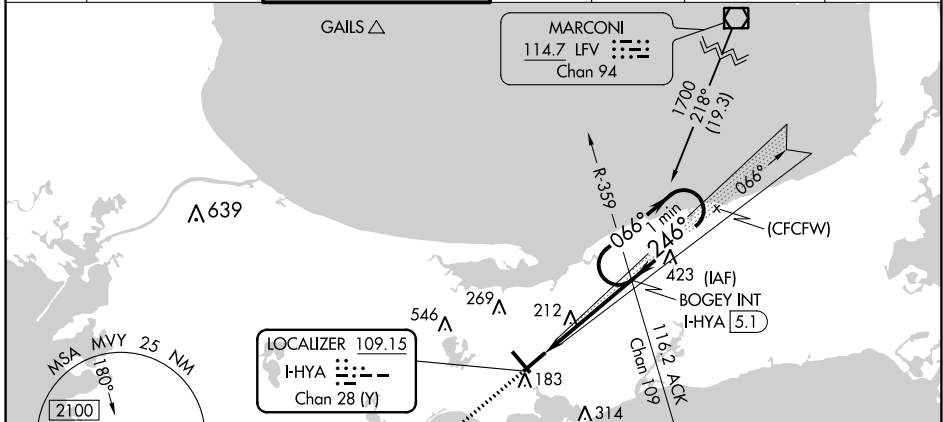
RADAR required.

**▼** When local altimeter setting not received, use Chatham altimeter setting and increase all DA to 325 feet and increase all MDA 40 feet, increase S-LOC 24 Cats C/D visibility to RVR 6000 and increase Circling Cats C/D visibility ¼ SM. Inop table does not apply to S-ILS 24 all Cats and S-LOC 24 Cats A/B. For inop ALS, increase S-LOC 24 Cats C/D visibility to 1¼ SM. For inop ALS, when using Chatham altimeter setting, increase S-LOC 24 Cats C/D visibility to 1½ SM. Straight-in/Circling Rwy 24 at night, operational VGSI required, remain on or above VGSI glidepath until threshold.  
**▲** Rwy 24 helicopter visibility reduction below RVR 5000 NA.

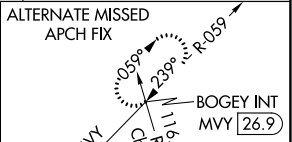


**MALSF**  
 MISSED APPROACH:  
 Climb to 700 then climbing left turn to 1700 on heading 045° and on ACK VOR/DME R-359 to BOGEY INT/I-HYA 5.1 DME and hold.

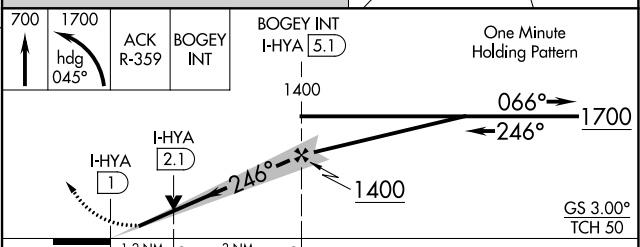
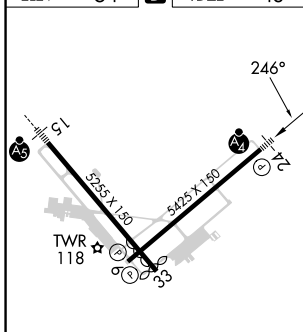
ATIS <b>123.8</b>	BOSTON APP CON * <b>118.2 284.6</b>	HYANNIS TOWER * <b>119.5 (CTAF) 257.8</b>	GND CON <b>118.45</b>	CLNC DEL <b>125.15</b>	CLNC DEL <b>120.125</b> (When twr closed)	UNICOM <b>122.95</b>
----------------------	----------------------------------------	----------------------------------------------	--------------------------	---------------------------	-------------------------------------------------	-------------------------



**LOCALIZER 109.15**  
 I-HYA  
 Chan 28 (Y)



ELEV 54	<b>D</b>	TDZE 43
---------	----------	---------



CATEGORY	A	B	C	D
S-ILS 24		293/50	250 (300-1)	
S-LOC 24		480/50	437 (500-1)	
<b>C</b> CIRCLING	560-1 506 (600-1)	580-1 526 (600-1)	860-2¼ 806 (900-2¼)	860-2½ 806 (900-2½)

NE-1, 22 FEB 2024 to 21 MAR 2024

NE-1, 22 FEB 2024 to 21 MAR 2024


WAAS CH <b>61112</b> <b>W15A</b>	APP CRS <b>156°</b>	Rwy Idg TDZE <b>54</b> Apt Elev <b>54</b>	<b>5255</b>
----------------------------------------	------------------------	-------------------------------------------------	-------------

# RNAV (GPS) RWY 15

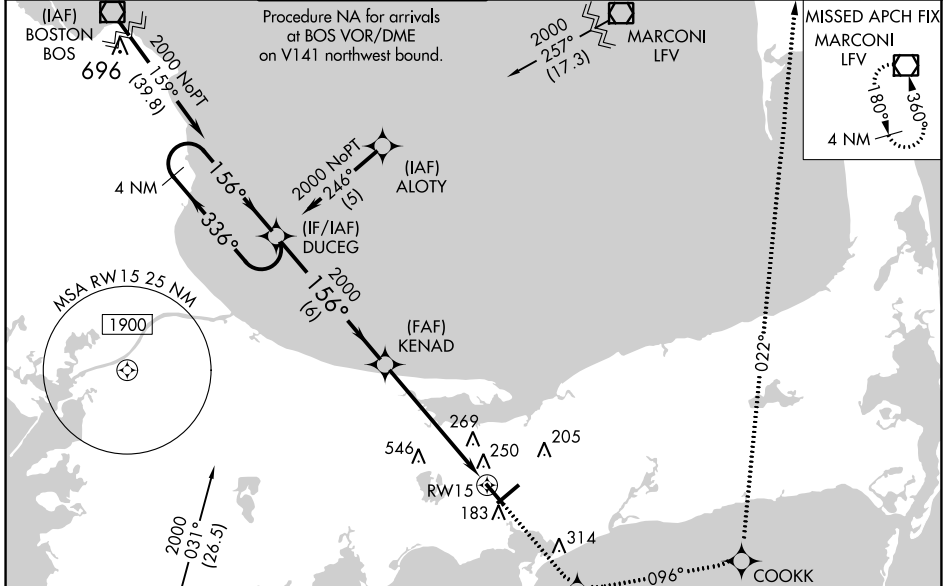
CAPE COD GATEWAY (HYA)

RNP APCH - GPS.

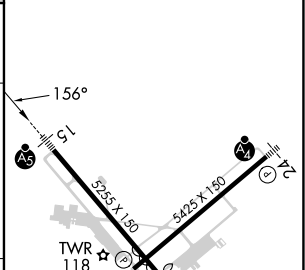
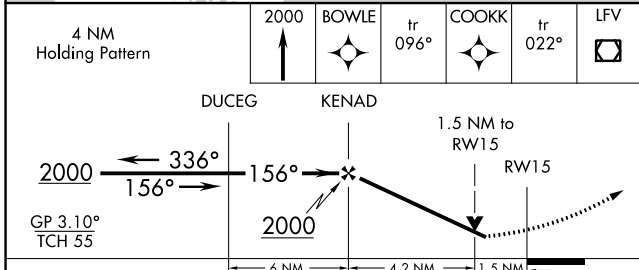
⚠ For uncompensated Baro-VNAV systems, LNAV/VNAV NA below -15°C or above 39°C.  
 When local altimeter setting not received, use Chatham altimeter setting: increase LPV DA to 286 feet; increase LNAV/VNAV DA to 601 feet, visibility all Cats to RVR 6000; increase all MDAs 40 feet, LNAV visibility Cats C and D ½ SM, and Circling visibility Cats C and D ¼ SM.  
 For inop ALS, increase LNAV/VNAV visibility all Cats to 1½ SM. Circling Rwy 24 at night, operational VGSI required, remain on or above VGSI glidepath until threshold. Rwy 15 helicopter visibility reduction below RVR 4000 NA. For inop ALS when using Chatham altimeter setting, increase LNAV Cats A and B visibility to RVR 5500. \*\*RVR 1800 authorized with use of FD or AP or HUD to DA (NA when using Chatham altimeter setting).

**MALSR**  
  
**MISSED APPROACH:**  
 Climb to 2000 direct BOWLE and on 096° track to COOKK and on 022° track to LFV VOR/DME and hold.

ATIS <b>123.8</b>	BOSTON APP CON * <b>118.2 284.6</b>	HYANNIS TOWER * <b>119.5 (CTAF) 257.8</b>	GND CON <b>118.45</b>	CLNC DEL <b>125.15</b>	CLNC DEL <b>120.125</b> (When hvr closed)	UNICOM <b>122.95</b>
----------------------	----------------------------------------	----------------------------------------------	--------------------------	---------------------------	----------------------------------------------	-------------------------



ELEV <b>54</b>	<b>D</b>	TDZE <b>54</b>
----------------	----------	----------------



CATEGORY	A	B	C	D
LPV DA**		254/24	200 (200-½)	
LNAV/VNAV DA		569/60	515 (600-1¼)	
LNAV MDA	600/40	546 (600-¾)	600/60	546 (600-1¼)
CIRCLING	600-1	546 (600-1)	860-2¼ 806 (900-2¼)	860-2½ 806 (900-2½)

REIL Rwy 6  
 HIRL Rws 6-24 and 15-33

NE-1, 22 FEB 2024 to 21 MAR 2024

NE-1, 22 FEB 2024 to 21 MAR 2024

WAAS CH <b>77812</b> <b>W24A</b>	APP CRS <b>246°</b>	Rwy Idg <b>5425</b> TDZE <b>43</b> Apt Elev <b>54</b>
----------------------------------------	------------------------	-------------------------------------------------------------

# RNAV (GPS) RWY 24

CAPE COD GATEWAY (HYA)

RNP APCH - GPS

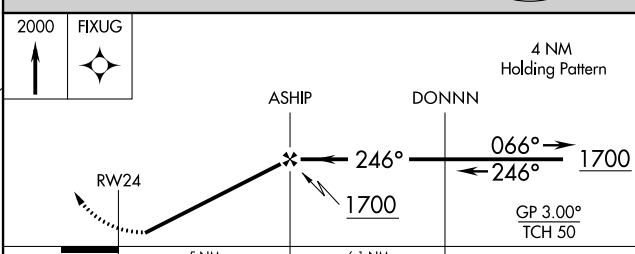
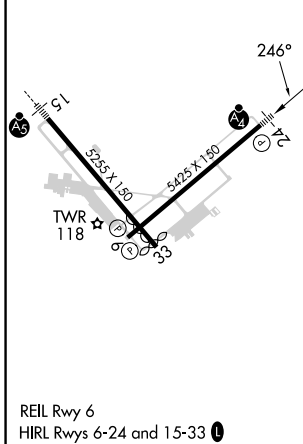
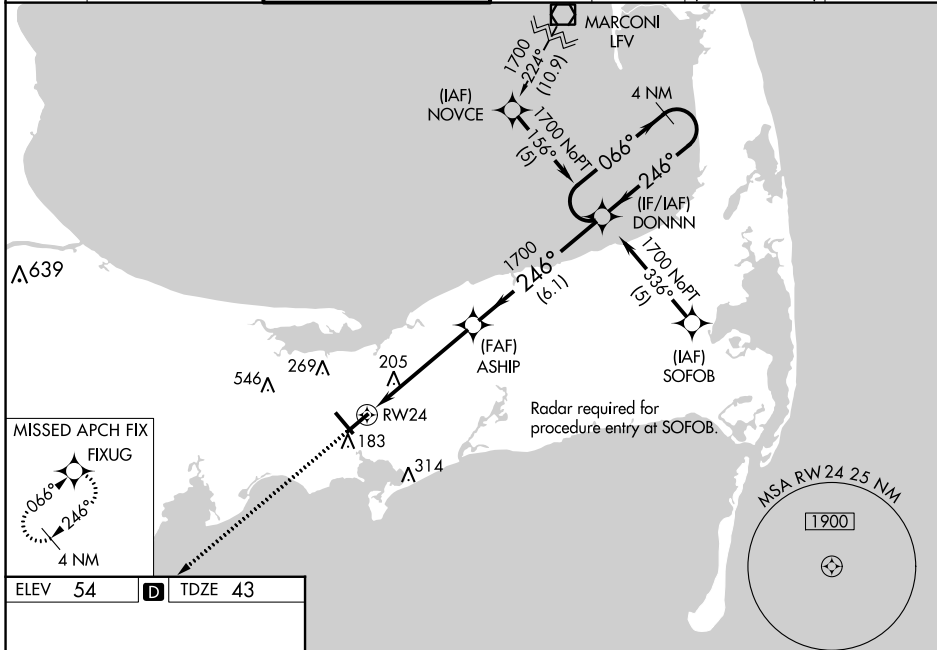
**▼** For uncompensated Baro-VNAV systems, LNAV/VNAV NA below -15°C or above 48°C. Rwy 24 helicopter visibility reduction below RVR 5000 NA. When local altimeter setting not received, use Chatham altimeter setting; increase LPV DA to 350 feet; increase LNAV/VNAV DA to 473 feet; increase all MDAs 40 feet, LNAV visibility Cats C and D to RVR 6000, and Circling visibility Cats C/D 1/2 SM. Baro-VNAV NA when using Chatham Muni altimeter setting. For inop ALS, increase LNAV/VNAV all Cats visibility to RVR 6000, LNAV Cat C/D visibility to 1 3/8 SM. Inop table does not apply to LPV all Cats, and LNAV Cats A and B. Straight in/Circling Rwy 24 at night, operational VGSI required, remain on or above VGSI glidepath until threshold. For inop ALS when using Chatham altimeter setting, increase LNAV/VNAV visibility all Cats to 1 1/2 SM.

MAISF



MISSED APPROACH:  
Climb to 2000 direct  
FIXUG and hold.

ATIS <b>123.8</b>	BOSTON APP CON ★ <b>118.2 284.6</b>	HYANNIS TOWER ★ <b>119.5 (CTAF) 0 257.8</b>	GND CON <b>118.45</b>	CLNC DEL <b>125.15</b>	CLNC DEL <b>120.125</b> (When twr closed)	UNICOM <b>122.95</b>
----------------------	----------------------------------------	------------------------------------------------	--------------------------	---------------------------	-------------------------------------------------	-------------------------



ELEV 54	<b>D</b>	TDZE 43		
2000	↑	FIXUG		
CATEGORY	A	B	C	D
LPV DA		318/50	275 (300-1)	
LNAV/VNAV DA		441/50	398 (400-1)	
LNAV MDA		500/50	457 (500-1)	
<b>C</b> CIRCLING	560-1 506 (600-1)	580-1 526 (600-1)	860-2 1/4 806 (900-2 1/4)	860-2 1/2 806 (900-2 1/2)

NE-1, 22 FEB 2024 to 21 MAR 2024

NE-1, 22 FEB 2024 to 21 MAR 2024

WAAS CH <b>99423</b> <b>W33A</b>	APP CRS <b>336°</b>	Rwy Idg <b>5105</b> TDZE <b>50</b> Apt Elev <b>54</b>
----------------------------------------	------------------------	-------------------------------------------------------------

# RNAV (GPS) RWY 33

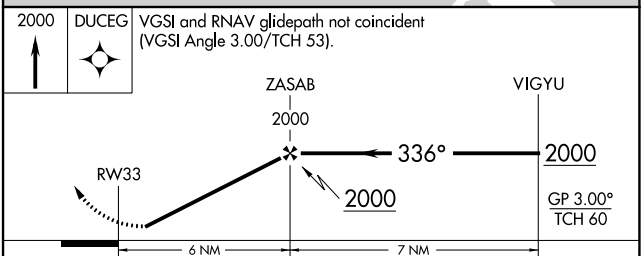
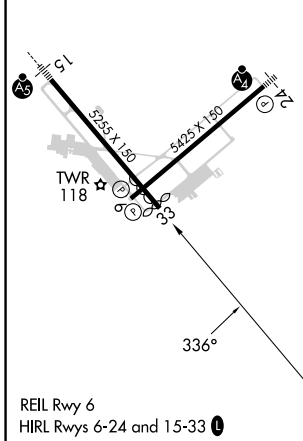
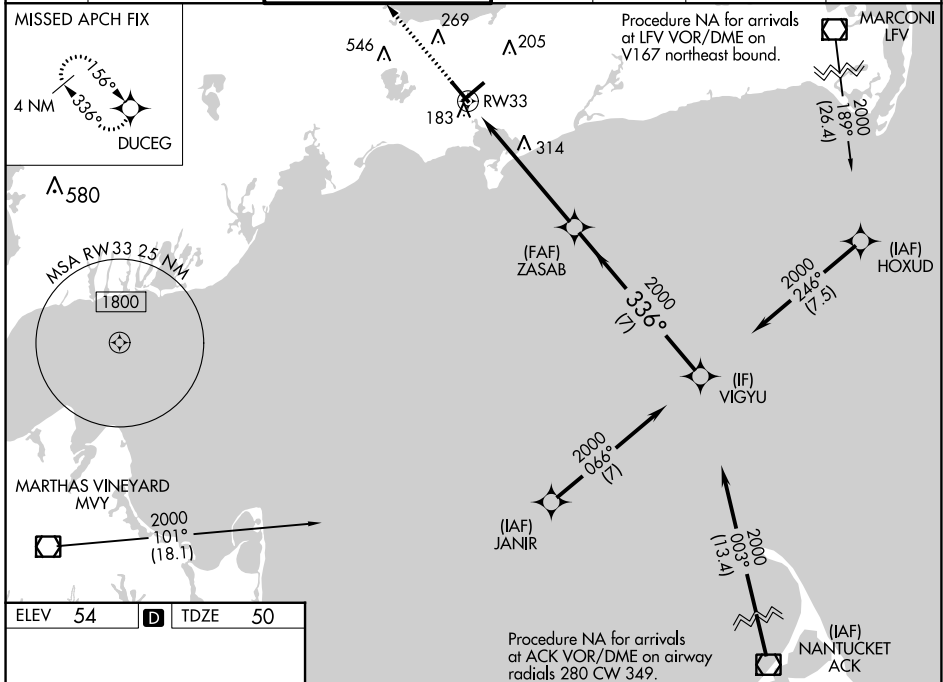
CAPE COD GATEWAY (HYA)

RNP APCH - GPS

▼ Baro-VNAV NA when using Chatham altimeter setting. For uncompensated Baro-VNAV systems, LNAV/VNAV NA below -15°C or above 43°C. When local altimeter setting not received, use Chatham altimeter setting: increase LPV DA to 332 feet; increase LNAV/VNAV DA to 393 feet; increase all MDAs 40 feet and visibility Cats C and D ¼ SM. Rwy 33 helicopter visibility reduction below ¾ SM NA. Circling Rwy 24 at night, operational VGSI required, remain on or above VGSI glidepath until threshold.

MISSED APPROACH: Climb to 2000 direct DUCEG and hold.

ATIS <b>123.8</b>	BOSTON APP CON ★ <b>118.2 284.6</b>	HYANNIS TOWER ★ <b>119.5 (CTAF) 257.8</b>	GND CON <b>118.45</b>	CLNC CON <b>125.15</b>	CLNC DEL <b>120.125</b> (When twr closed)	UNICOM <b>122.95</b>
----------------------	----------------------------------------	----------------------------------------------	--------------------------	---------------------------	-------------------------------------------------	-------------------------



CATEGORY	A	B	C	D
LPV DA		300-1	250 (300-1)	
LNAV/VNAV DA		361-1	311 (400-1)	
LNAV MDA	620-1	570 (600-1)	620-1½	570 (600-1½)
CIRCLING	620-1	566 (600-1)	860-2¼ 806 (900-2¼)	860-2½ 806 (900-2½)

NE-1, 22 FEB 2024 to 21 MAR 2024

NE-1, 22 FEB 2024 to 21 MAR 2024

WAAS CH <b>45799</b> <b>W06A</b>	APP CRS <b>066°</b>	Rwy Idg TDZE <b>45</b> Apt Elev <b>54</b>	<b>5019</b>
----------------------------------------	------------------------	-------------------------------------------------	-------------

# RNAV (GPS) RWY 6

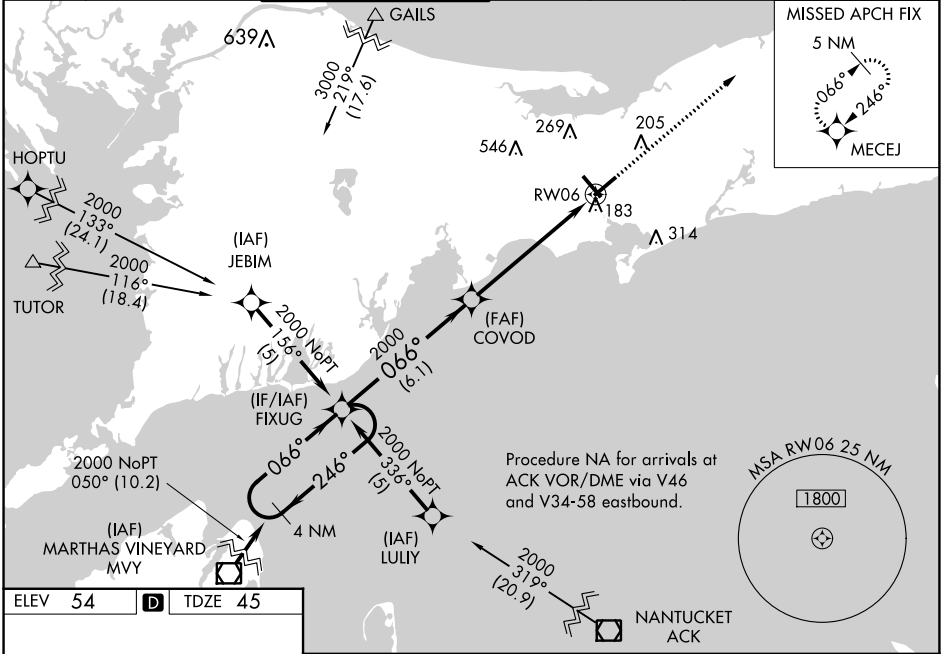
CAPE COD GATEWAY (HYA)

RNP APCH - GPS

▼ Baro-VNAV NA below -1.5°C. Baro-VNAV NA when using Chatham altimeter setting. When local altimeter setting not received, use Chatham altimeter setting and increase LPV DA to 348 feet; increase LNAV/VNAV DA to 475 feet and increase LNAV/VNAV all Cats visibility 1/8 SM; increase all MDAs 40 feet; LNAV Cats C and D visibility 1/8 SM; Circling Cats C and D visibility 1/4 SM. Circling Rwy 24 at night, operational VGSI required, remain on or above VGSI glidepath until threshold. Rwy 6 helicopter visibility reduction below 3/4 SM NA.

MISSED APPROACH:  
Climb to 1700 direct  
MECEJ and hold.

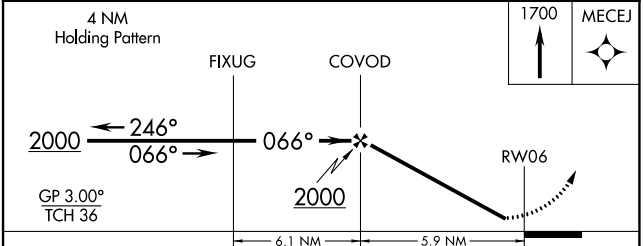
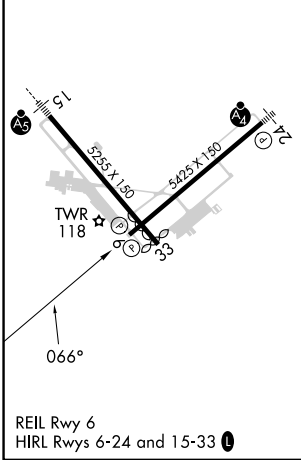
ATIS <b>123.8</b>	BOSTON APP CON * <b>118.2 284.6</b>	HYANNIS TOWER * <b>119.5 (CTAF) 0 257.8</b>	GND CON <b>118.45</b>	CLNC DEL <b>125.15</b>	CLNC DEL <b>120.125</b> (When twr closed)	UNICOM <b>122.95</b>
----------------------	----------------------------------------	------------------------------------------------	--------------------------	---------------------------	-------------------------------------------------	-------------------------



NE-1, 22 FEB 2024 to 21 MAR 2024

NE-1, 22 FEB 2024 to 21 MAR 2024

ELEV 54	<b>D</b>	TDZE 45
---------	----------	---------



CATEGORY	A	B	C	D
LPV DA	316-1		271 (300-1)	
LNAV/VNAV DA	443-1½		398 (400-1½)	
LNAV MDA	480-1	435 (500-1)	480-1¼ 435 (500-1¼)	480-1½ 435 (500-1½)
<b>C</b> CIRCLING	560-1 506 (600-1)	580-1 526 (600-1)	860-2¼ 806 (900-2¼)	860-2½ 806 (900-2½)

# VOR RWY 6

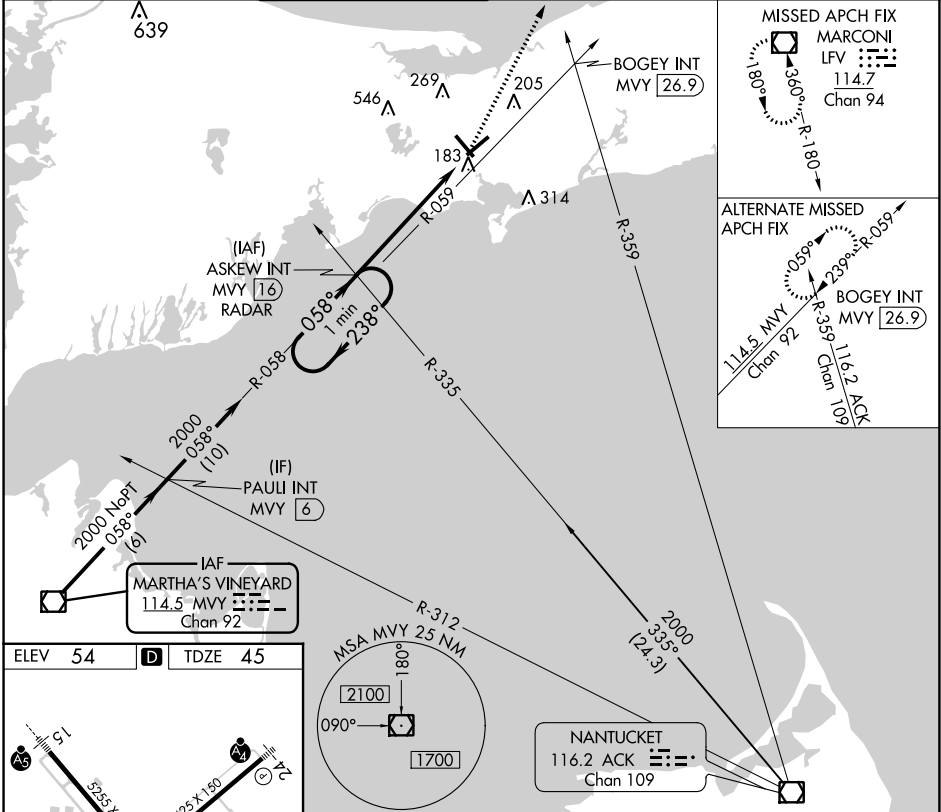
## CAPE COD GATEWAY (HYA)

VOR/DME M <sup>VY</sup>	APP CRS	Rwy Idg	<b>5019</b>
<b>114.5</b>	<b>058°</b>	TDZE	<b>45</b>
Chan <b>92</b>		Apt Elev	<b>54</b>

**⚠** When local altimeter setting not received, use Chatham altimeter setting and increase all MDAs 40 feet and S-6 Cat A and Circling Cat C/D visibility 1/4 SM.  
**⚠** Rwy 6 helicopter visibility reduction below 3/4 SM NA. Circling Rwy 24 at night, operational VGSI required, remain on or above VGSI glidepath until threshold.

**MISSED APPROACH:** Climb to 2000 direct LFV VOR/DME and hold, continue climb-in-hold to 3000.

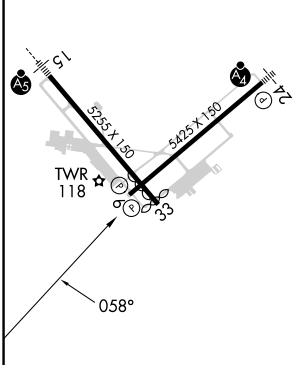
ATIS <b>123.8</b>	BOSTON APP CON * <b>118.2 284.6</b>	HYANNIS TOWER * <b>119.5 (CTAF) 257.8</b>	GND CON <b>118.45</b>	CLNC DEL <b>125.15</b>	CLNC DEL <b>120.125</b> (When twr closed)	UNICOM <b>122.95</b>
----------------------	----------------------------------------	----------------------------------------------	--------------------------	---------------------------	-------------------------------------------------	-------------------------



NE-1, 22 FEB 2024 to 21 MAR 2024

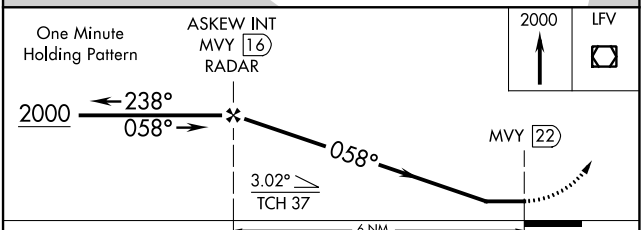
NE-1, 22 FEB 2024 to 21 MAR 2024

ELEV 54	<b>D</b>	TDZE 45
---------	----------	---------



REIL Rwy 6  
 HIRL Rwys 6-24 and 15-33  
 FAF to MAP 6 NM

Knots	60	90	120	150	180
Min:Sec	6:00	4:00	3:00	2:24	2:00



CATEGORY	A	B	C	D
S-6	900-1 855 (900-1)	900-1 1/4 855 (900-1 1/4)	900-2 1/2	855 (900-2 1/2)
<input checked="" type="checkbox"/> CIRCLING	900-1 1/4	846 (900-1 1/4)	900-2 1/2 846 (900-2 1/2)	900-2 3/4 846 (900-2 3/4)

# VOR RWY 6