

LOC/DME I-HOT 111.5 Chan 52	APP CRS 053°	Rwy Idg 6595 TDZE 516 Apt Elev 540
---	------------------------	---

ILS or LOC RWY 5

MEML FLD (HOT)

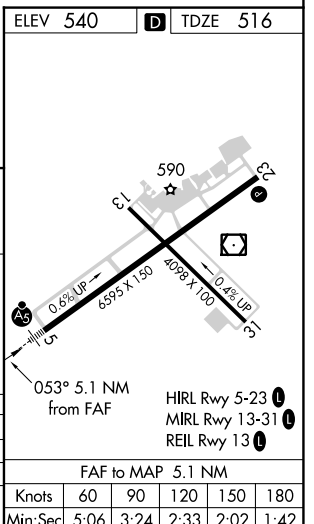
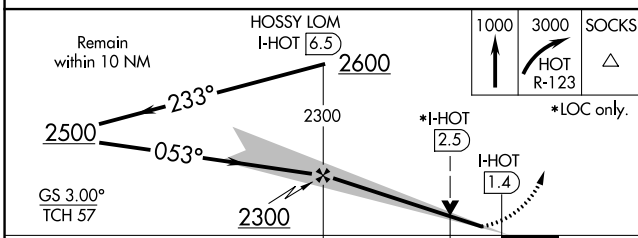
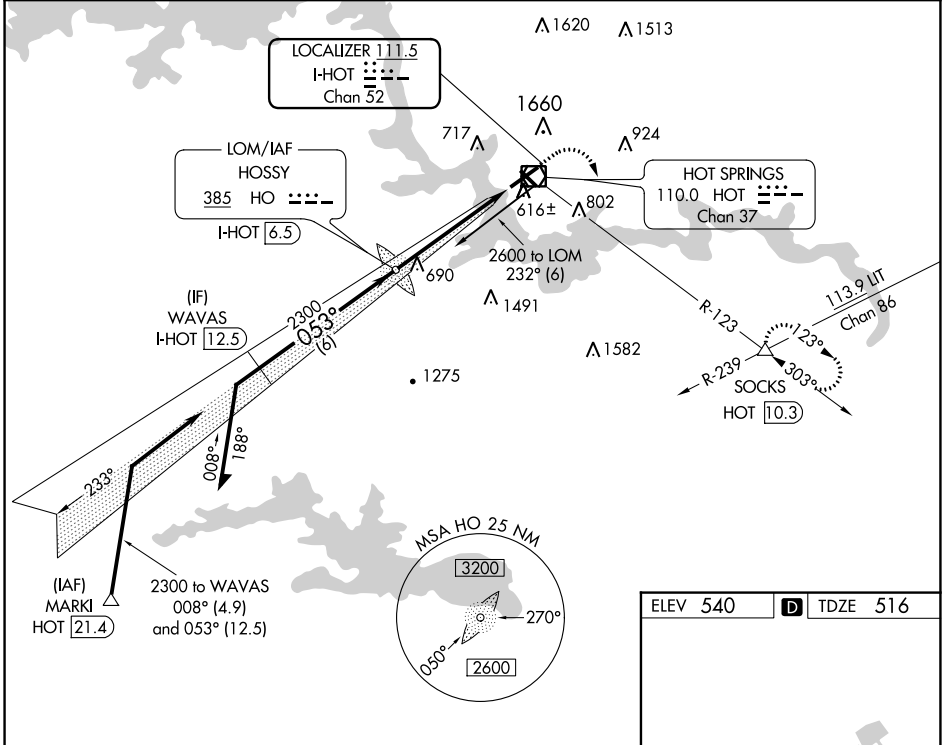
ADF or DME required.

NA Circling NA northwest of Rwy 5-23.
Use I-HOT DME when on localizer course.

MALS R

MISSED APPROACH: Climb to 1000 then climbing right turn to 3000 on HOT VOR/DME R-123 to SOCKS INT/HOT 10.3 DME and hold.

ASOS 119.925	MEMPHIS CENTER 128.475 377.15	UNICOM 123.0 (CTAF)
------------------------	---	-------------------------------



CATEGORY	A	B	C	D
S-ILS 5	732-1/2 216 (200-1/2)			
S-LOC 5	940-1/2	424 (400-1/2)	940-3/4	424 (400-3/4)
CIRCLING	1080-1 540 (600-1)		1380-2 1/2 840 (900-2 1/2)	1620-3 1080 (1100-3)

FAF to MAP 5.1 NM					
Knots	60	90	120	150	180
Min:Sec	5:06	3:24	2:33	2:02	1:42

SC-1, 22 FEB 2024 to 21 MAR 2024

SC-1, 22 FEB 2024 to 21 MAR 2024

HOT SPRINGS, ARKANSAS

AL-902 (FAA)

22139

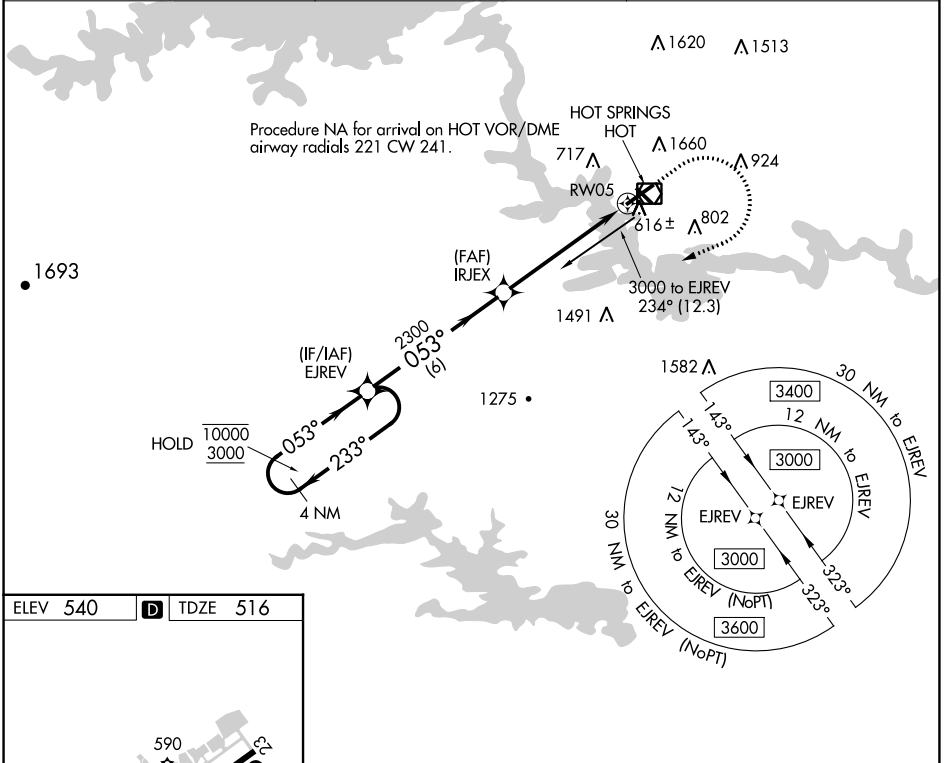
WAAS CH 86343 W05A	APP CRS 053°	Rwy Idg TDZE Apt Elev	6595 516 540
--	------------------------	-----------------------------	---

RNAV (GPS) RWY 5

MEML FLD (HOT)

RNP APCH.		MALSR	MISSED APPROACH: Climb to 1300 then climbing right turn 3000 direct EJREV and hold.
NA For inop ALS, increase all Cats visibility to 1 2/3 SM.			

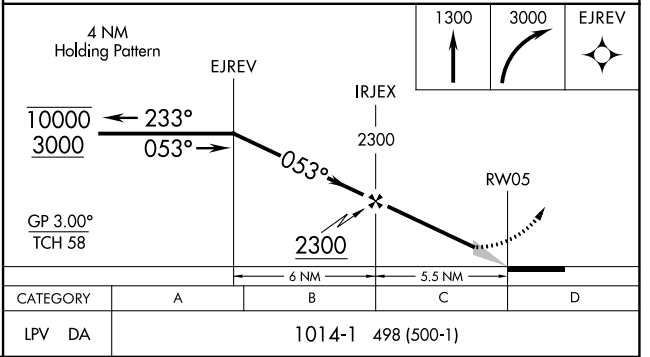
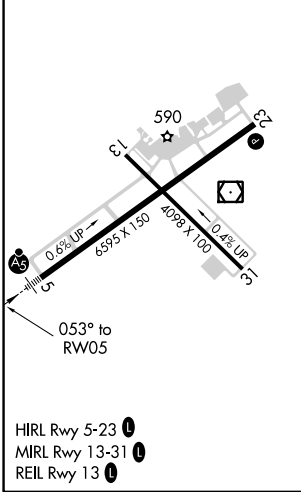
ASOS 119.925	MEMPHIS CENTER 128.475 377.15	UNICOM 123.0 (CTAF)
------------------------	---	-------------------------------



SC-1, 22 FEB 2024 to 21 MAR 2024

SC-1, 22 FEB 2024 to 21 MAR 2024

ELEV 540		TDZE 516
----------	--	----------



HOT SPRINGS, ARKANSAS
Amdt 2A 30JAN20

34°29'N-93°06'W

RNAV (GPS) RWY 5

MEML FLD (HOT)

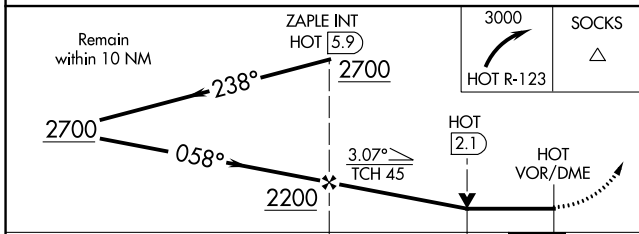
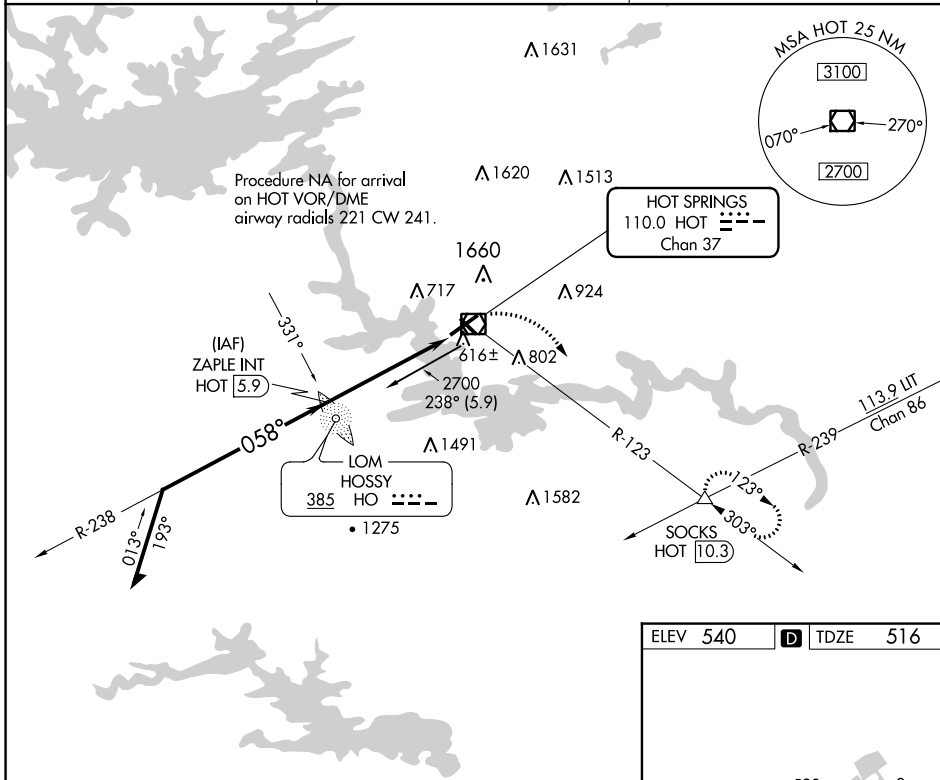
VOR/DME HOT 110.0 Chan 37	APP CRS 058°	Rwy Idg 6595 TDZE 516 Apt Elev 540
---	------------------------	---

VOR RWY 5

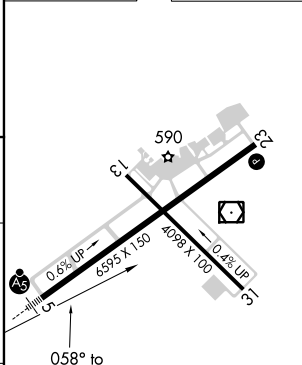
MEML FLD (HOT)

ADF or DME required for procedure entry. ADF or DME required.	MALSR 	MISSED APPROACH: Climbing right turn to 3000 on HOT R-123 to SOCKS INT/HOT 10.3 DME and hold.
Circling NA northwest of Rws 5 and 23. Circling Rwy 31 NA at night.		

ASOS 119.925	MEMPHIS CENTER 128.475 377.15	UNICOM 123.0 (CTAF) 0
------------------------	---	---------------------------------



ELEV 540	D TDZE 516
----------	-------------------



CATEGORY	A	B	C	D
S-5	960-1/2 444 (500-1/2)		960-7/8 444 (500-7/8)	
CIRCLING	1080-1 540 (600-1)		1380-2 1/2 840 (900-2 1/2)	1620-3 1080 (1100-3)

HIRL Rwy 5-23
MIRL Rwy 13-31
REIL Rwy 13

SC-1, 22 FEB 2024 to 21 MAR 2024

SC-1, 22 FEB 2024 to 21 MAR 2024