

(OYODA2.OYODA) 21336

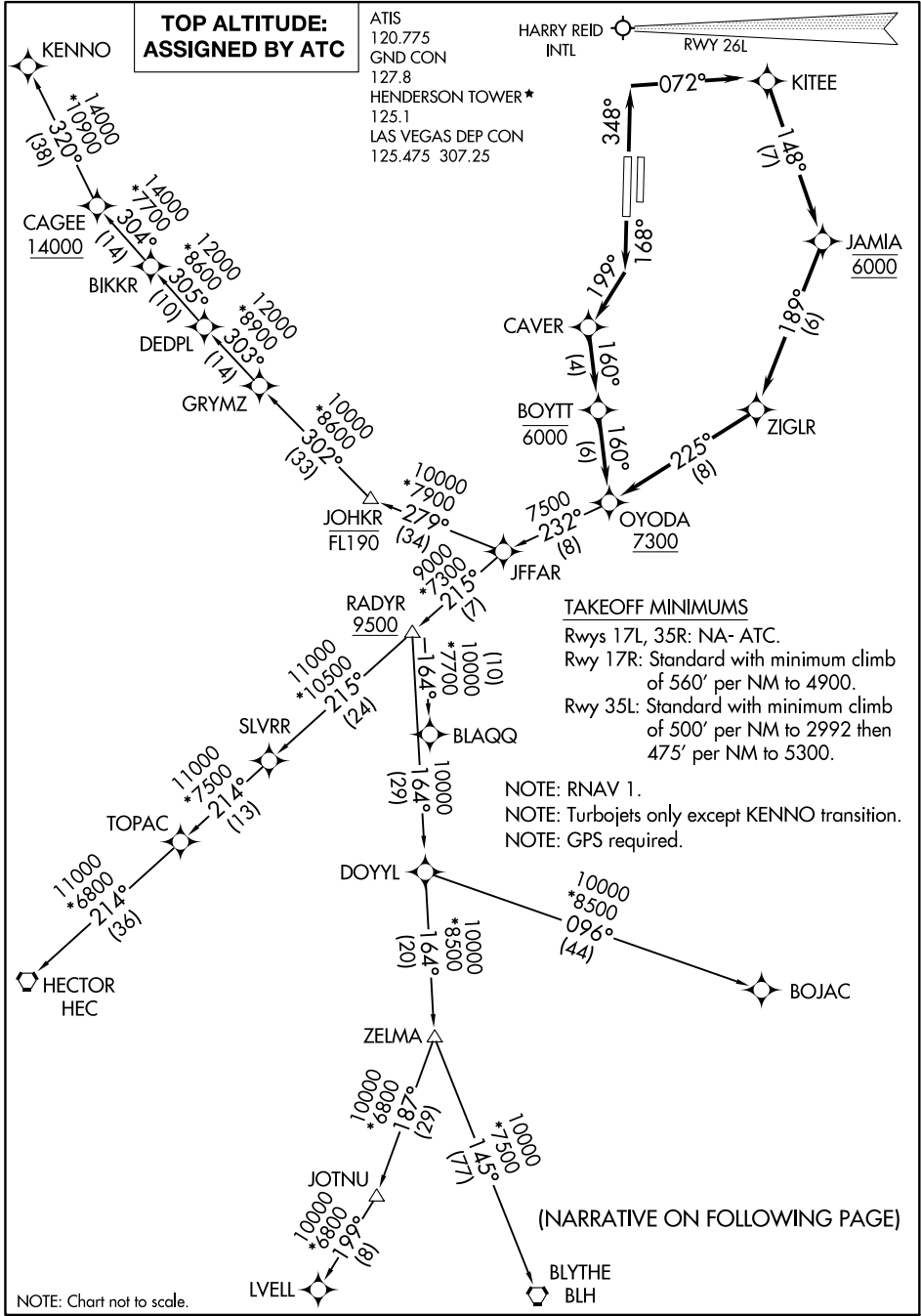
OYODA TWO DEPARTURE (RNAV)

AL-6514 (FAA)

HENDERSON EXEC (HND)
LAS VEGAS, NEVADA

**TOP ALTITUDE:
ASSIGNED BY ATC**

ATIS
120.775
GND CON
127.8
HENDERSON TOWER*
125.1
LAS VEGAS DEP CON
125.475 307.25



TAKEOFF MINIMUMS

Rwys 17L, 35R: NA- ATC.
Rwy 17R: Standard with minimum climb of 560' per NM to 4900.
Rwy 35L: Standard with minimum climb of 500' per NM to 2992 then 475' per NM to 5300.

NOTE: RNAV 1.
NOTE: Turbojets only except KENNO transition.
NOTE: GPS required.

(NARRATIVE ON FOLLOWING PAGE)

NOTE: Chart not to scale.

OYODA TWO DEPARTURE (RNAV)

(OYODA2.OYODA) 22APR21

LAS VEGAS, NEVADA
HENDERSON EXEC (HND)

SW-4, 27 JAN 2022 to 24 FEB 2022

SW-4, 27 JAN 2022 to 24 FEB 2022



DEPARTURE ROUTE DESCRIPTION

TAKEOFF RUNWAY 17R: Climb on heading 168° to intercept course 199° to CAVER, then on track 160° to cross BOYTT at or below 6000, then on track 160° to cross OYODA at or above 7300, thence. . . .

TAKEOFF RUNWAY 35L: Climb on heading 348° to intercept course 072° to KITEE, then on track 148° to cross JAMIA at 6000, then on track 189° to ZIGLR, then on track 225° to cross OYODA at or above 7300, thence. . . .

. . . (transition). Maintain ATC assigned altitude, expect filed altitude 10 minutes after departure.

BLAQQ TRANSITION (OYODA2.BLAQQ)

BLYTHE TRANSITION (OYODA2.BLH)

BOJAC TRANSITION (OYODA2.BOJAC)

HECTOR TRANSITION (OYODA2.HEC)

KENNO TRANSITION (OYODA2.KENNO)

LVELL TRANSITION (OYODA2.LVELL)

SLVRR TRANSITION (OYODA2.SLVRR)

SW-4, 27 JAN 2022 to 24 FEB 2022

SW-4, 27 JAN 2022 to 24 FEB 2022

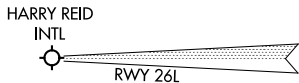
SCAMR TWO DEPARTURE (RNAV)
(SCAMR2.SCAMR) 22APR21

(SCAMR2.SCAMR) 21336
SCAMR TWO DEPARTURE (RNAV)

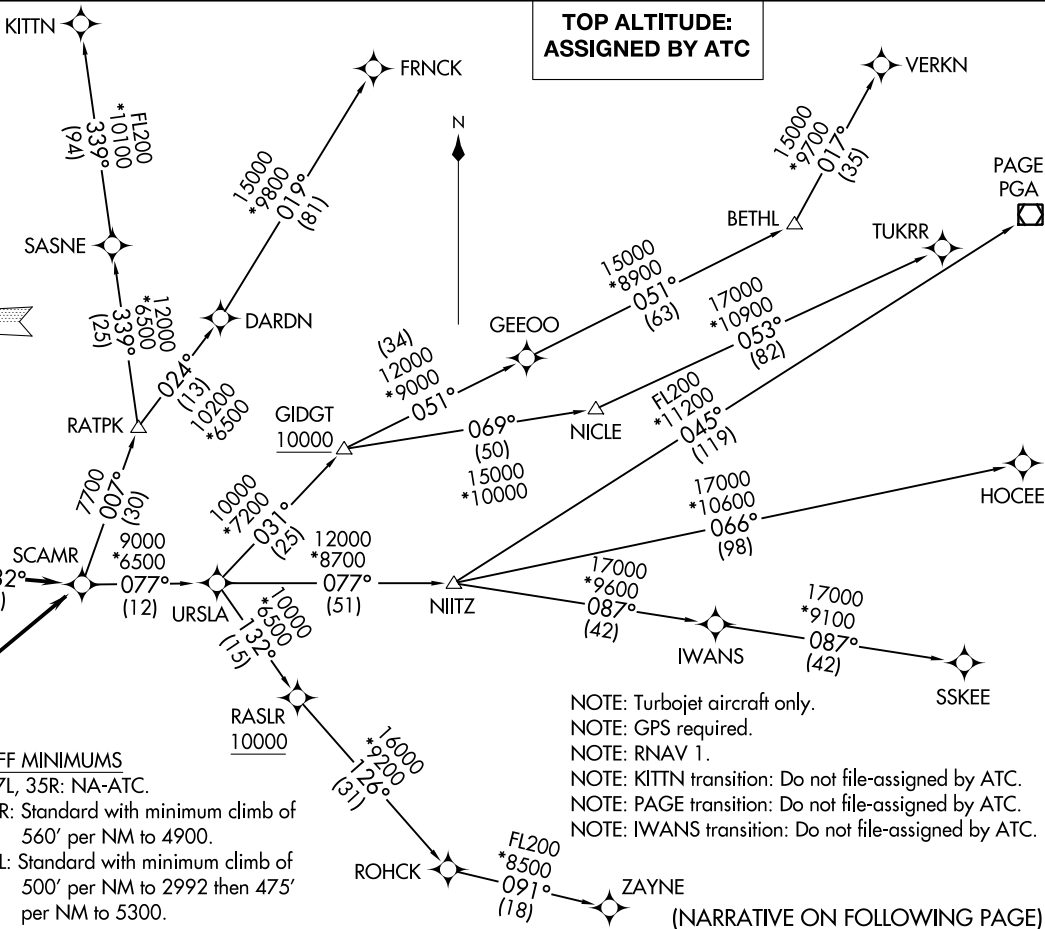
AL-6514 (FAA)

HENDERSON EXEC (HND)
LAS VEGAS, NEVADA

ATIS 120.775
GND CON 127.8
HENDERSON TOWER * 125.1
LAS VEGAS DEP CON 125.475 307.25



**TOP ALTITUDE:
ASSIGNED BY ATC**



TAKEOFF MINIMUMS
Rwys 17L, 35R: NA-ATC.
Rwy 17R: Standard with minimum climb of 560' per NM to 4900.
Rwy 35L: Standard with minimum climb of 500' per NM to 2992 then 475' per NM to 5300.

- NOTE: Turbojet aircraft only.
- NOTE: GPS required.
- NOTE: RNAV 1.
- NOTE: KITTN transition: Do not file-assigned by ATC.
- NOTE: PAGE transition: Do not file-assigned by ATC.
- NOTE: IWANS transition: Do not file-assigned by ATC.

(NARRATIVE ON FOLLOWING PAGE)

NOTE: Chart not to scale.

LAS VEGAS, NEVADA
HENDERSON EXEC (HND)



DEPARTURE ROUTE DESCRIPTION

TAKEOFF RUNWAY 17R: Climb on heading 168° to intercept course 199° to CAVER, then on track 160° to cross BOYTT at or below 6000, then on track 090° to ZIGLR, then on track 045° to SCAMR, thence. . . .

TAKEOFF RUNWAY 35L: Climb on heading 348° to intercept course 072° to KITEE, then on track 148° to cross JAMIA at 6000, then on track 082° to SCAMR, thence. . . .

. . . . (transition). Maintain ATC assigned altitude, expect filed altitude 10 minutes after departure.

FRNCK TRANSITION (SCAMR2.FRNCK)

HOCEE TRANSITION (SCAMR2.HOCEE)

IWANS TRANSITION (SCAMR2.IWANS)

KITTN TRANSITION (SCAMR2.KITTN)

PAGE TRANSITION (SCAMR2.PGA)

SSKEE TRANSITION (SCAMR2.SSKEE)

TUKRR TRANSITION (SCAMR2.TUKRR)

VERKN TRANSITION (SCAMR2.VERKN)

ZAYNE TRANSITION (SCAMR2.ZAYNE)

SW-4, 27 JAN 2022 to 24 FEB 2022

SW-4, 27 JAN 2022 to 24 FEB 2022