

TIKEE FOUR ARRIVAL (RNAV)
(TIKEE.TIKEE4) 20APR23

POTOMAC APP CON
120.45 306.925
DCA D-ATIS
132.65
ADW D-ATIS
133.675 251.05
*DAA ATIS
128.175

RNAV 1 - DME/DME/IRU or GPS.
RADAR required.

ARRIVAL ROUTE DESCRIPTION

BBONE TRANSITION (BBONE.TIKEE4):
KESSEL TRANSITION (ESL.TIKEE4):
SEALZ TRANSITION (SEALZ.TIKEE4):

All aircraft types landing HEF/NYG/RMN/HWY/CJR/EZF:
From TIKEE on track 090° to JETIS, then on heading 090° or as assigned by ATC. Expect RADAR vectors to final approach course.

Props and Turboprop aircraft landing DAA/W00/VKX/ADW/
2W5/DCA: From TIKEE on track 122° to GILFF, then on
track 090° to HIGPO, then on heading 090° or as assigned by ATC.
Expect RADAR vectors to final approach course.

NOTE: Procedure available to all type aircraft landing the following airports: CJR, HWY, HEF, RMN, EZF, NYG.

NOTE: Props or Turboprop aircraft only landing the following airports: DAA, 2W5, VKX, W00, DCA, ADW.

KESSEL
ESL
FL190



7000
*6300
178°
(37)

BBONE

7000
*6300
107°
(12)

LURAY 7000
*6300
(7)

6300
087°
(9)

(3)
5200
090°

JETIS

090°

7000
*6300
086°
(42)

SEALZ

LLBEE 9000

TIKEE

090°

5200
122°
(41)

WARRENTON/
FAUQUIER

CULPEPER
RGNL

STAFFORD
RGNL

3000
*1500

090°
(3)

GILFF

090°

HIGPO

SHANNON

MANASSAS RGNL/
HARRY P DAVIS FLD

DAVISON AAF

QUANTICO MCAF
(TURNER FLD)

MARYLAND

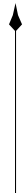
RONALD REAGAN
WASHINGTON
NTL

FREEWAY

JOINT BASE
ANDREWS

POTOMAC
AIRFIELD

N



NOTE: Chart not to scale

WASHINGTON, DC

WASHINGTON, DC

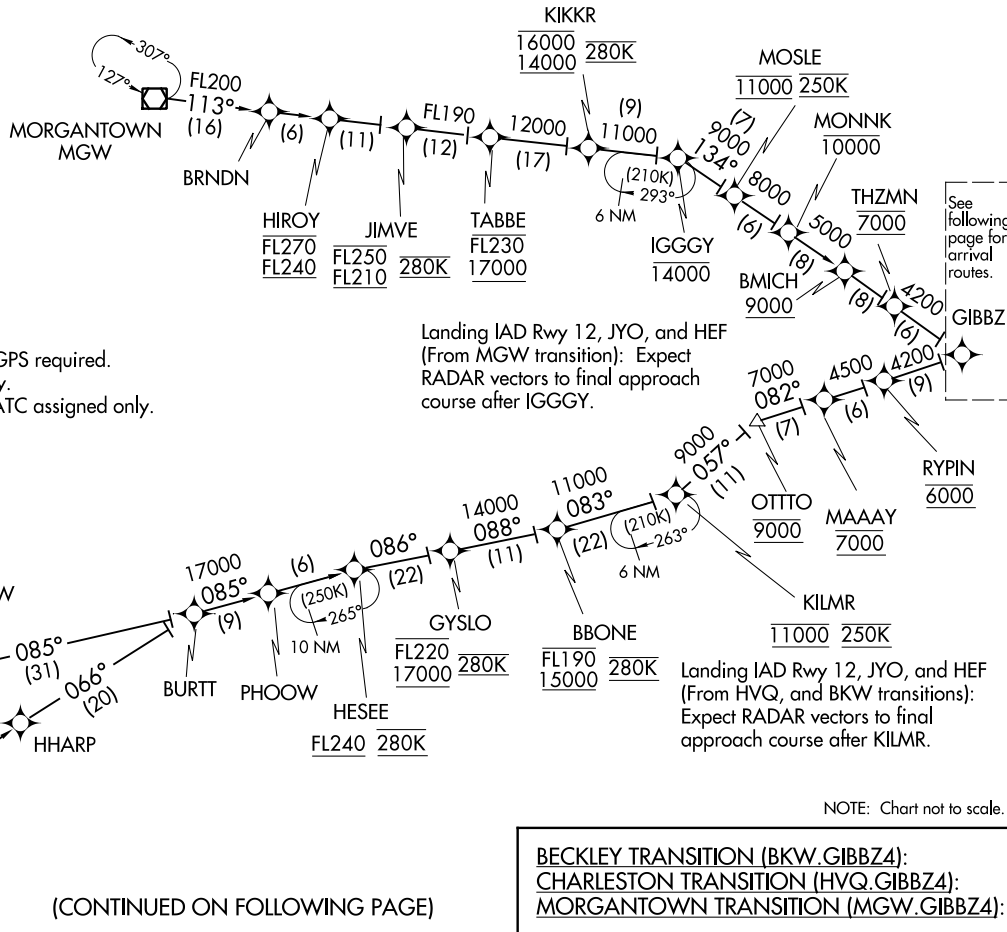
TIKEE FOUR ARRIVAL (RNAV)
(TIKEE.TIKEE4) 23110

AL-443 (FAA)

POTOMAC APP CON
 120.45 306.925
 HEF ATIS
 125.175
 IAD D-ATIS
 134.85



- NOTE: RADAR required.
- NOTE: RNAV 1.
- NOTE: DME/DME/IRU or GPS required.
- NOTE: Turbojet aircraft only.
- NOTE: Turboprop aircraft ATC assigned only.



Landing IAD Rwy 12, JYO, and HEF
 (From MGW transition): Expect
 RADAR vectors to final approach
 course after IGGGY.

Landing IAD Rwy 12, JYO, and HEF
 (From HVQ, and BKW transitions):
 Expect RADAR vectors to final
 approach course after KILMR.

See
 following
 page for
 arrival
 routes.

BECKLEY TRANSITION (BKW.GIBBZ4):
CHARLESTON TRANSITION (HVQ.GIBBZ4):
MORGANTOWN TRANSITION (MGW.GIBBZ4):

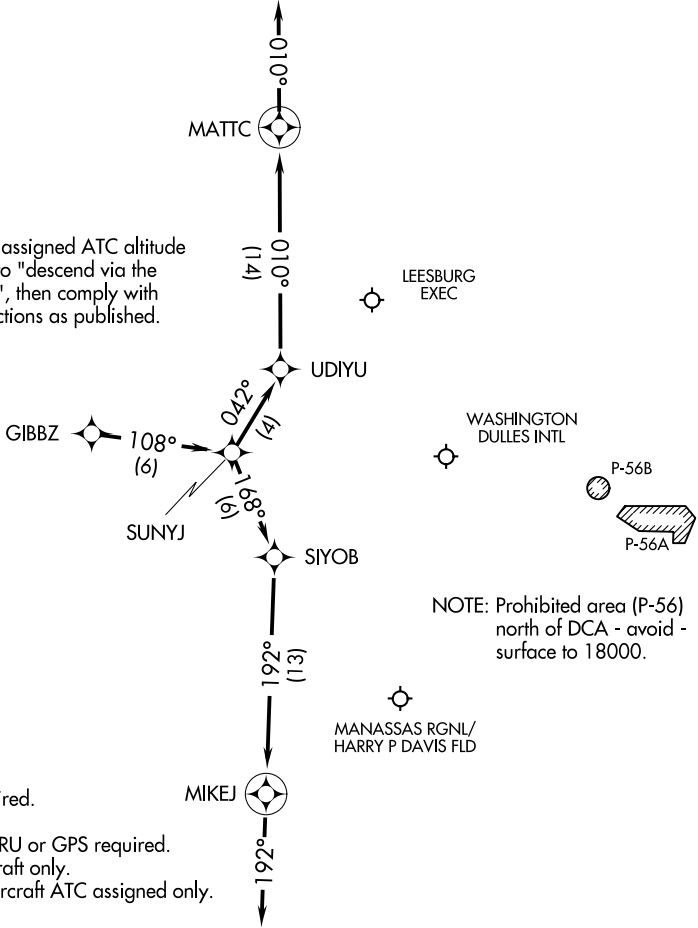
NOTE: Chart not to scale.

GIBBZ FOUR ARRIVAL (RNAV) Arrival Routes

WASHINGTON, DC

POTOMAC APP CON
120.45 306.925
HEF ATIS
125.175
IAD D-ATIS
134.85

NOTE: Maintain last assigned ATC altitude until cleared to "descend via the GIBBZ FOUR", then comply with altitude restrictions as published.



- NOTE: RADAR required.
- NOTE: RNAV 1.
- NOTE: DME/DME/IRU or GPS required.
- NOTE: Turbojet aircraft only.
- NOTE: Turboprop aircraft ATC assigned only.

NOTE: Chart not to scale.

ARRIVAL ROUTE DESCRIPTION

LANDING RUNWAYS 1L/C/R, 30: From GIBBZ on track 108° to SUNYJ, then on track 168° to SIYOB, then on track 192° to MIKEJ, then on track 192°. Expect radar vectors to final approach course.

LANDING RUNWAYS 19L/C/R: From GIBBZ on track 108° to SUNYJ, then on track 042° to UDIYU, then on track 010° to MATTC, then on track 010°. Expect radar vectors to final approach course.

NE-3, 22 FEB 2024 to 21 MAR 2024

NE-3, 22 FEB 2024 to 21 MAR 2024

HYPER EIGHT ARRIVAL (RNAV) Arrival Routes

WASHINGTON, DC

POTOMAC APP CON

133.0 288.35

IAD D-ATIS

134.85

DULLES TOWER

120.1 317.8 (Rwy 1R/19L)

120.25 348.6 (Rwy 1C/19C)

134.425 348.6 (Rwy 1L/19R, 12/30)

NOTE: RADAR required.

NOTE: RNAV 1.

NOTE: DME/DME/IRU or GPS required.

NOTE: Turbojet and turboprop aircraft only.

NOTE: For aircraft capable of 180K or greater.



LIRCH 14000

DELRO

HYPER 10000 250K

7 NM

069° (265K)

(5)

4 NM

211° (210K)

(18)

069°

216° (18)

219° (22)

230°

220°

217° (4)

189° (9)

191° (9)

191° (5)

191° (5)

191° (5)

191° (5)

191° (5)

191° (5)

191° (5)

191° (5)

191° (5)

191° (5)

191° (5)

191° (5)

191° (5)

191° (5)

191° (5)

191° (5)

191° (5)

191° (5)

191° (5)

191° (5)

191° (5)

191° (5)

191° (5)

NE-3, 22 FEB 2024 to 21 MAR 2024

NE-3, 22 FEB 2024 to 21 MAR 2024

NOTE: Chart not to scale.

HYPER EIGHT ARRIVAL (RNAV) Arrival Routes

WASHINGTON, DC

ARRIVAL ROUTE DESCRIPTION

IAD: From DELRO on track 249° to cross LIRCH at 14000, then on track 249° to BINNS, then on track 249° to cross HYPER at 10000 and at 250K.

Landing IAD Rwy 1C/R: From HYPER on track 211° to cross SIGBE at 7000, then on track 189° to cross MOWAT at 5000, then on track 189° to cross HUSEL at 4000, then on track 190° to YACKK, then on track 191° to TICON, then on track 191°. Expect RADAR vectors to final approach course.

Landing IAD Rwy 1L: From HYPER on track 220° to cross CRAIN at 6000, then on track 214° to cross KUKSE at 5000, then on track 191° to ELISN, then on track 191° to MIKEJ, then on track 191°. Expect RADAR vectors to final approach course.

Landing IAD Rwy 19C: From HYPER on track 219° to cross COVUR at 7000, then on track 191° to DIMKE, then on track 191° to cross HOOSR at or above 5000. Expect ILS or LOC Rwy 19C approach.

Landing IAD Rwy 19L: From HYPER on track 216° to cross OOGLE at or below 5000, then on track 217° to cross LITEY at 4000, then on track 191° to cross YYANG at 4000, then on track 191° to cross DADEY at or above 3000. Expect ILS or LOC Rwy 19L approach.

Landing IAD Rwy 19R: From HYPER on track 220° to cross CRAIN at 6000, then on track 220° to cross REXOE at 6000, then on track 191° to cross BEEZY at or above 4000. Expect ILS or LOC Rwy 19R approach.

Landing NYG/CJR/EZF/RMN/HWY/HEF: From DELRO on track 249° to cross LIRCH at 14000, then on track 249° to BINNS, then on track 249° to cross HYPER at 10000 and at 250K, then on track 211° to cross SIGBE at 7000, then on track 189° to cross MOWAT at 5000, then on track 189° to cross HUSEL at 4000, then on track 190° to YACKK, then on track 191° to TICON, then on track 191°. Expect RADAR vectors to final approach course.

Landing MRB/JYO/FRR/OKV: From DELRO on track 249° to cross LIRCH at 14000, then on track 249° to BINNS, then on track 249° to cross HYPER at 10000 and at 250K, then on track 233° to PHATT. Then on heading 230° or as assigned by ATC. Expect RADAR vectors to final approach course.

NE-3, 22 FEB 2024 to 21 MAR 2024

NE-3, 22 FEB 2024 to 21 MAR 2024

PRIVO THREE ARRIVAL

POTOMAC APP CON
 133.00 288.35
 HEF ATIS
 125.175
 IAD D-ATIS
 134.85
 NYG ATIS ★
 263.15

PHILIPSBURG
 115.5 PSB
 Chan 102

JARAF
 Expect FL180

PRIVO

DAFIX
 Expect 12000

OVIEE
 Expect 10000

HAGERSTOWN
 109.8 HGR

MAPEL
 Expect 7000

EASTERN WV RGNL/
 SHEPHERD FLD

LEESBURG EXEC

WASHINGTON DULLES INTL

ARMEL
 113.5 AML
 Chan 82

MANASSAS RGNL/
 HARRY P DAVIS FLD

NOTE: DME and RADAR required.
 NOTE: Jet aircraft only.

QUANTICO MCAF
 (TURNER FLD)

(NARRATIVE ON FOLLOWING PAGE)

NOTE: Chart not to scale.

PRIVO THREE ARRIVAL

NE-3, 22 FEB 2024 to 21 MAR 2024

NE-3, 22 FEB 2024 to 21 MAR 2024

PRIVO THREE ARRIVAL

WASHINGTON, DC

ARRIVAL ROUTE DESCRIPTION

PHILIPSBURG TRANSITION (PSB.PRIVO3): From over PSB VORTAC on PSB R-177 to PRIVO. Thence....

....from PRIVO on PSB R-177 to DAFIX, then on PSB R-177 to OVIEE, then on AML R-358 to MAPEL. Then on HGR R-141 to TWEAK. Then on heading 190° or as assigned by ATC.

LANDING RWYS 1L/C/R and 30: Expect RADAR vectors to final approach course after TWEAK.

LANDING RWYS 19L/C/R and 12: Expect RADAR vectors to final approach course after MAPEL.

LANDING KHEF and KNYG: Expect RADAR vectors to destination airport after TWEAK.

LANDING KMRB and KJYO: Expect RADAR vectors to destination airport after MAPEL.

NE-3, 22 FEB 2024 to 21 MAR 2024

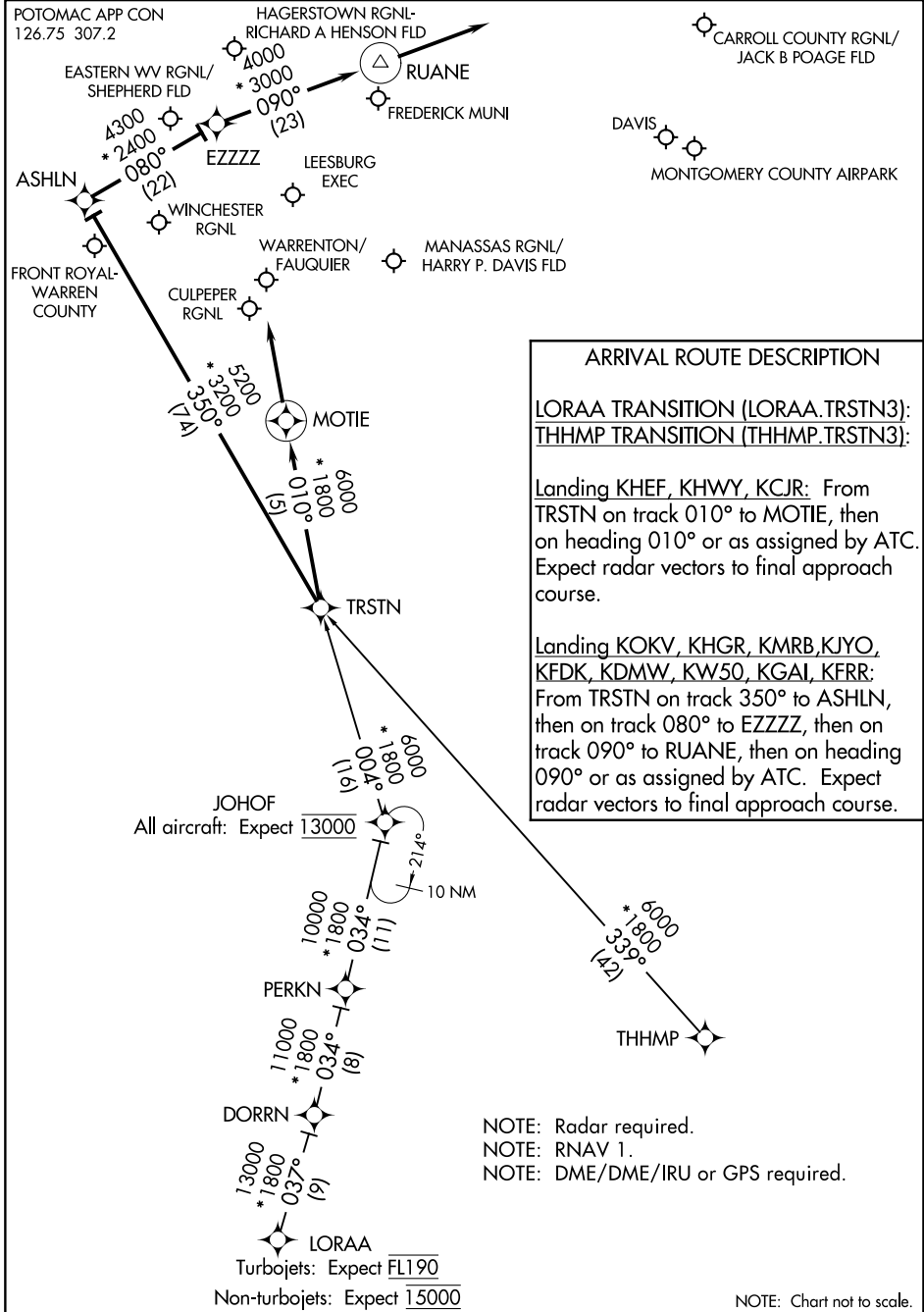
NE-3, 22 FEB 2024 to 21 MAR 2024

(TRSTN.TRSTN3) 22027

TRSTN THREE ARRIVAL (RNAV)

AL-5326

WASHINGTON, D.C.



NE-3, 22 FEB 2024 to 21 MAR 2024

NE-3, 22 FEB 2024 to 21 MAR 2024

TRSTN THREE ARRIVAL (RNAV)

(TRSTN.TRSTN3) 04FEB16

WASHINGTON, D.C.