

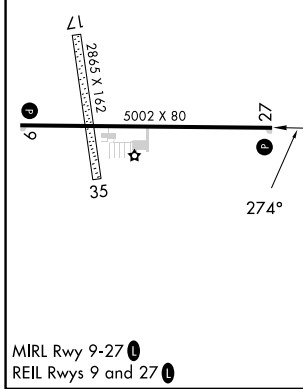
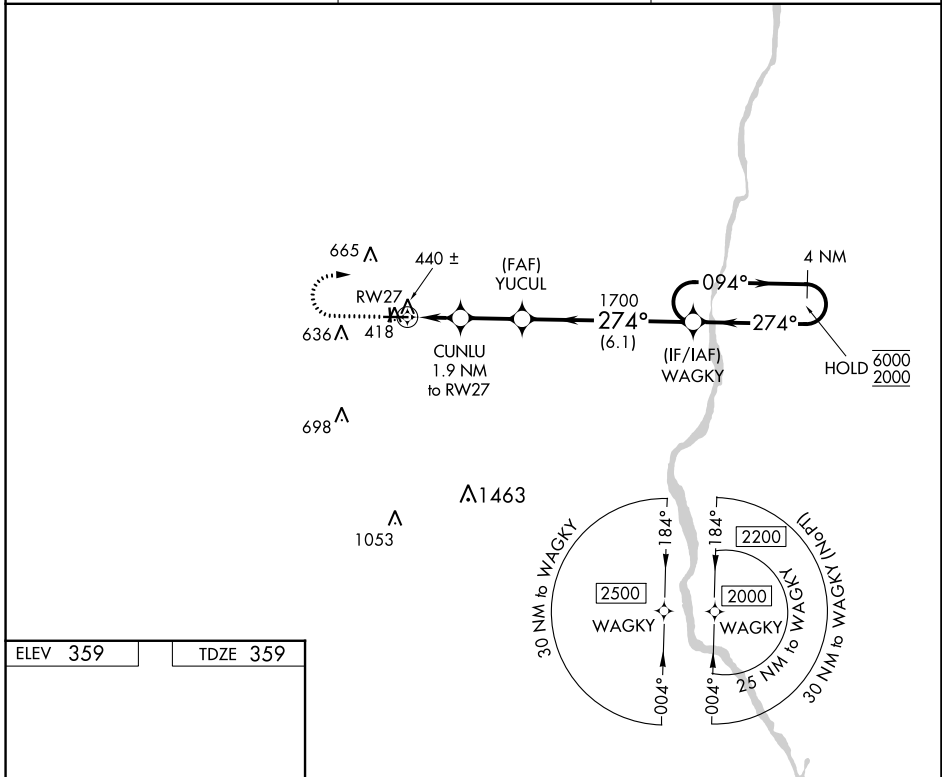
APP CRS	Rwy Idg	5002
274°	TDZE	359
	Apt Elev	359

RNAV (GPS) RWY 27

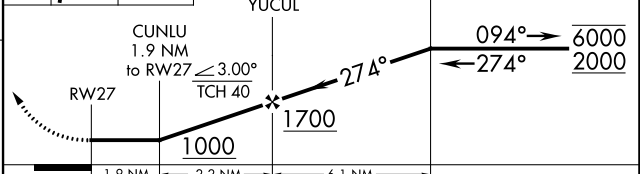
HEADLAND MUNI (HDL)

RNP APCH - GPS.	<p>▽ Circling NA to Rwys 17 and 35. Rwy 27 helicopter visibility reduction below 1 SM NA. Straight-in Rwy 27 NA at night, Circling Rwy 27 NA at night.</p>	<p>MISSED APPROACH: Climb to 900 then climbing right turn to 2000 direct WAGKY and hold.</p>
-----------------	---	---

AWOS-3PT 119.575	CAIRNS APP CON* 125.4	CTAF 122.90
----------------------------	---------------------------------	-----------------------



ELEV 359	TDZE 359	900	2000	WAGKY	VGSI and descent angle not coincident (VGSI Angle 3.50/TCH 40).	4 NM Holding Pattern
----------	----------	-----	------	-------	---	----------------------



CATEGORY	A	B	C	D
LNAV MDA	720-1 361 (400-1)			NA
☑ CIRCLING	860-1 501 (600-1)	940-1 581 (600-1)	980-1 ³ / ₄ 621 (700-1 ³ / ₄)	NA

SE-4, 22 FEB 2024 to 21 MAR 2024

SE-4, 22 FEB 2024 to 21 MAR 2024

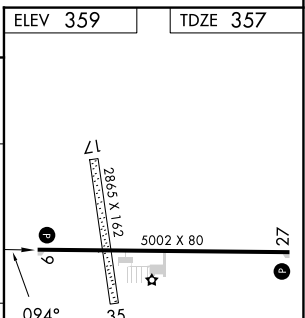
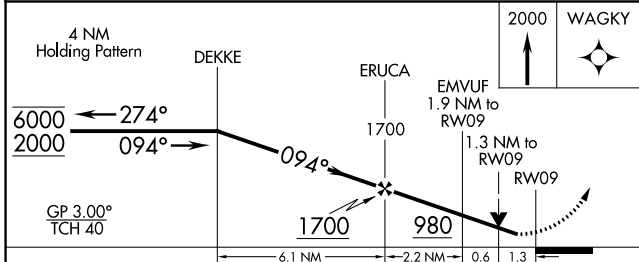
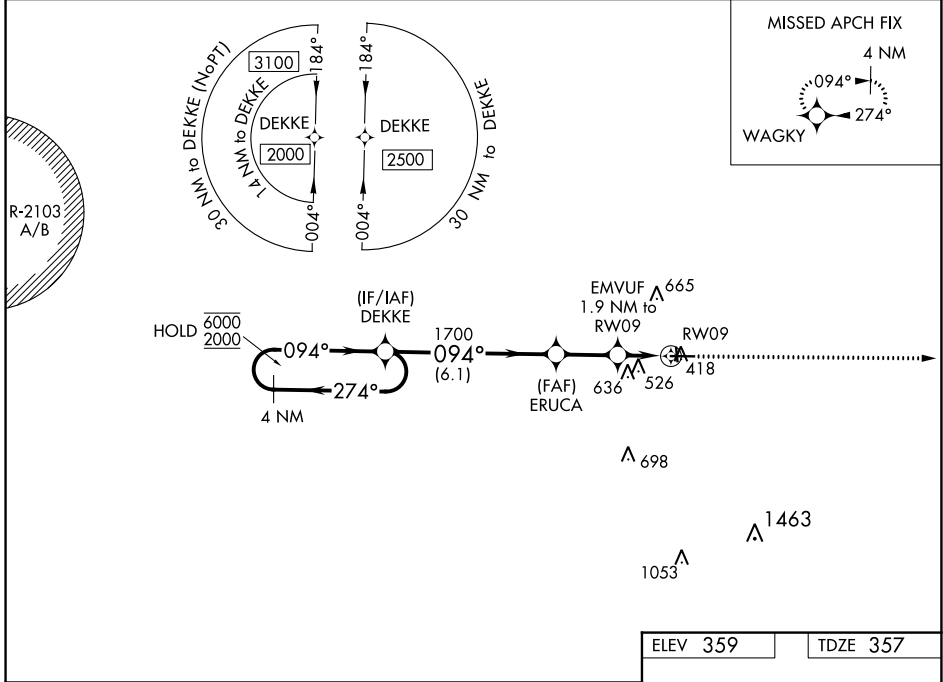
WAAS CH 70528 W09A	APP CRS 094°	Rwy Idg TDZE Apt Elev	5002 357 359
--	------------------------	-----------------------------	---

RNAV (GPS) RWY 9

HEADLAND MUNI (HDL)

RNP APCH - GPS.	MISSED APPROACH: Climb to 2000 direct WAGKY and hold.
<p>▼ Circling NA to Rwy 17 and 35. Circling Rwy 27 NA at night.</p> <p>▲ Rwy 9 helicopter visibility reduction below 3/4 SM NA.</p>	

AWOS-3PT 119.575	CAIRNS APP CON ★ 125.4	CTAF 122.90
----------------------------	----------------------------------	-----------------------



CATEGORY	A	B	C	D
LPV DA	631-1 274 (300-1)			NA
LNAV/DA	810-1 ³ / ₈ 453 (500-1 ³ / ₈)			NA
LNAV MDA	800-1 443 (500-1)		800-1 ³ / ₈ 443 (500-1 ³ / ₈)	NA
C CIRCLING	860-1 501 (600-1)	940-1 581 (600-1)	980-1 ³ / ₄ 621 (700-1 ³ / ₄)	NA

ELEV 359	TDZE 357
MIRL Rwy 9-27 1 REIL Rwy 9 and 27 1	

SE-4, 22 FEB 2024 to 21 MAR 2024

SE-4, 22 FEB 2024 to 21 MAR 2024