

WAAS CH 99742	APP CRS 122°	Rwy Idg TDZE Apt Elev	4248 59 66
W12A			

RNAV (GPS) RWY 12

HALF MOON BAY (HAF)

RNP APCH.

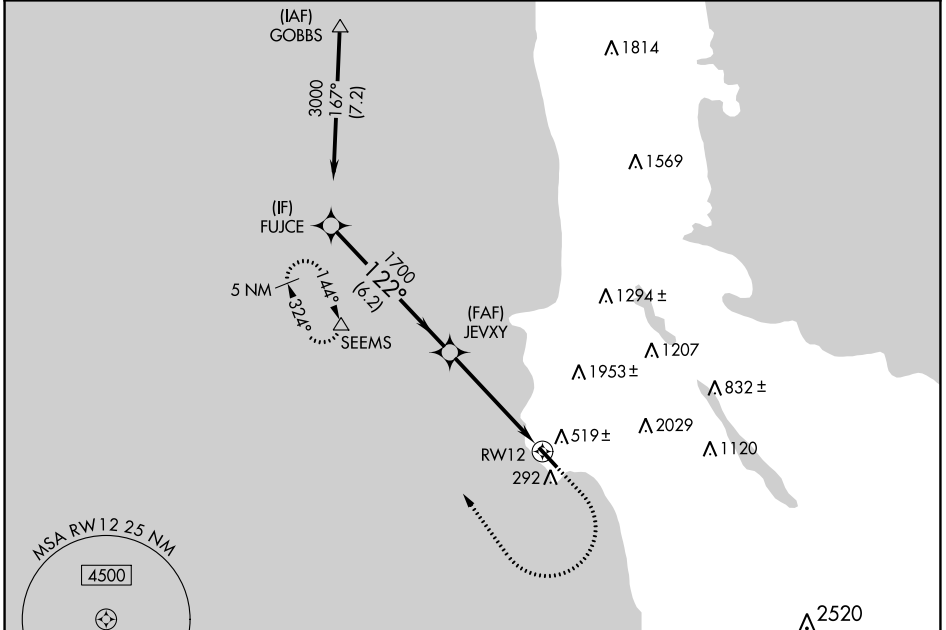
▽ Rwy 12 helicopter visibility reduction below 3/4 SM NA. For uncompensated Baro-VNAV systems, LNAV/VNAV NA below -15° C or above 54° C.

MISSED APPROACH: Climb to 700 then climbing right turn to 4000 direct SEEMS and hold, continue climb-in-hold to 4000.

AWOS
127.275

NORCAL APP CON
135.1 307.2

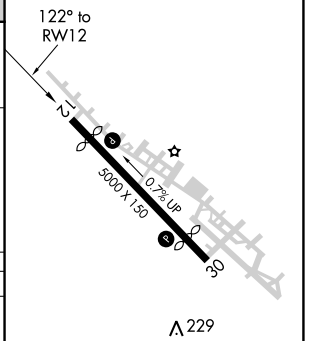
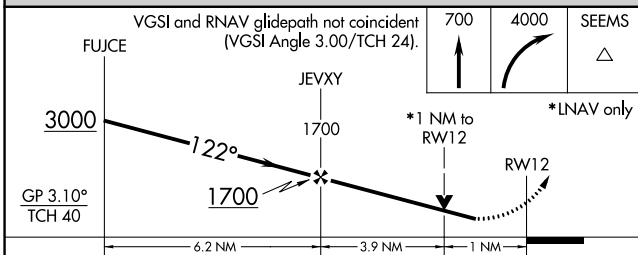
UNICOM
122.8 (CTAF) 0



SW-2, 07 OCT 2021 to 04 NOV 2021

SW-2, 07 OCT 2021 to 04 NOV 2021

ELEV 66	TDZE 59
---------	---------



CATEGORY	A	B	C	D
LPV DA	360-7/8		301 (300-7/8)	
LNAV/VNAV DA	652-13/4		593 (600-13/4)	
LNAV MDA	660-1	601 (600-1)	660-13/4	601 (600-13/4)

REIL Rwy 30 0
MIRL Rwy 12-30 0

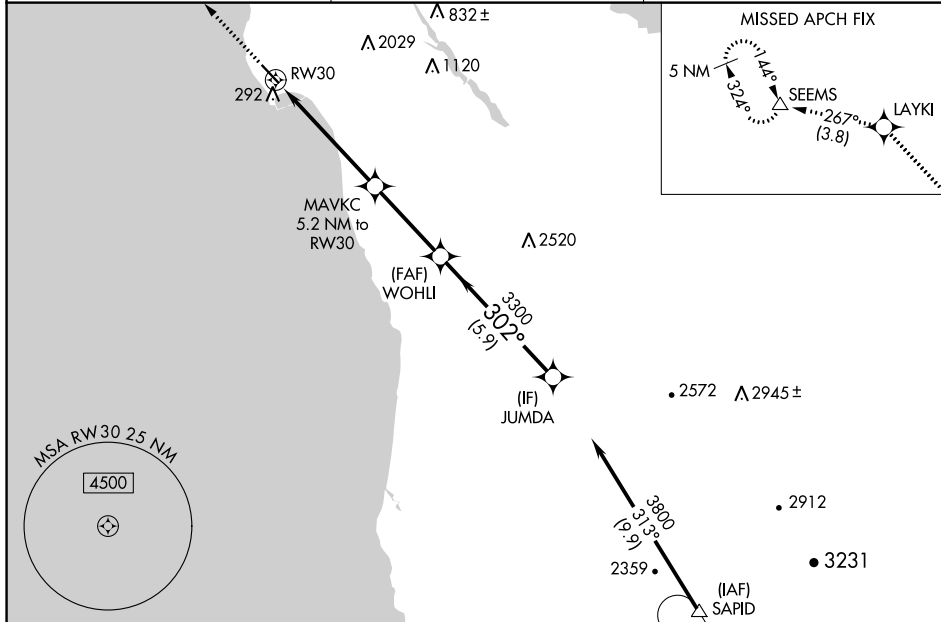
WAAS CH 50302 W30A	APP CRS 302°	Rwy Idg TDZE Apt Elev	4238 54 66
----------------------------------------	------------------------	-----------------------------	---------------------------------------

RNAV (GPS) RWY 30

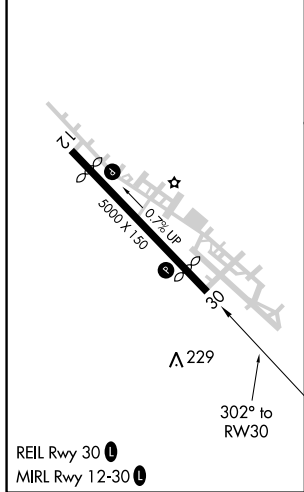
HALF MOON BAY (HAF)

RNP APCH. ▽	MISSED APPROACH: Climb to 4000 direct LAYKI and on track 267° to SEEMS and hold, continue climb-in-hold to 4000.
----------------	------------------------------------------------------------------------------------------------------------------

AWOS-3 127.275	NORCAL APP CON 135.1 307.2	UNICOM 122.8 (CTAF) ①
--------------------------	--------------------------------------	---------------------------------



ELEV 66	TDZE 54
---------	---------



4000	LAYKI	tr 267°	SEEMS	VGSi and RNAV glidepath not coincident (VGSi Angle 3.00/TCH 24).			
*LNAV only		MAVKC 5.2 NM to RW30		WOHLI	JUMDA		
*1.8 NM to RW30		3300		3800	GP 3.50° TCH 40		
1.8 NM		3.4 NM		3.4 NM		5.9 NM	
CATEGORY	A	B	C	D			
LPV DA	381-1 327 (400-1)						
LNAV MDA	620-1 566 (600-1)			620-1½ 566 (600-1½)			

SW-2, 07 OCT 2021 to 04 NOV 2021

SW-2, 07 OCT 2021 to 04 NOV 2021