

WAAS CH <b>99437</b> W13A	APP CRS <b>124°</b>	Rwy Idg TDZE <b>993</b> Apt Elev <b>993</b>
---------------------------------	------------------------	---

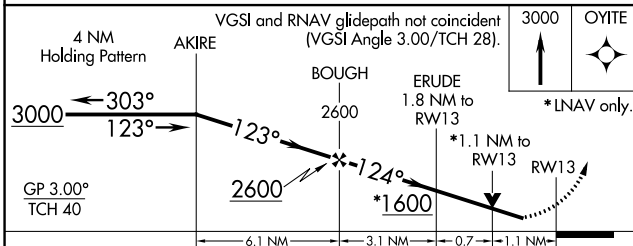
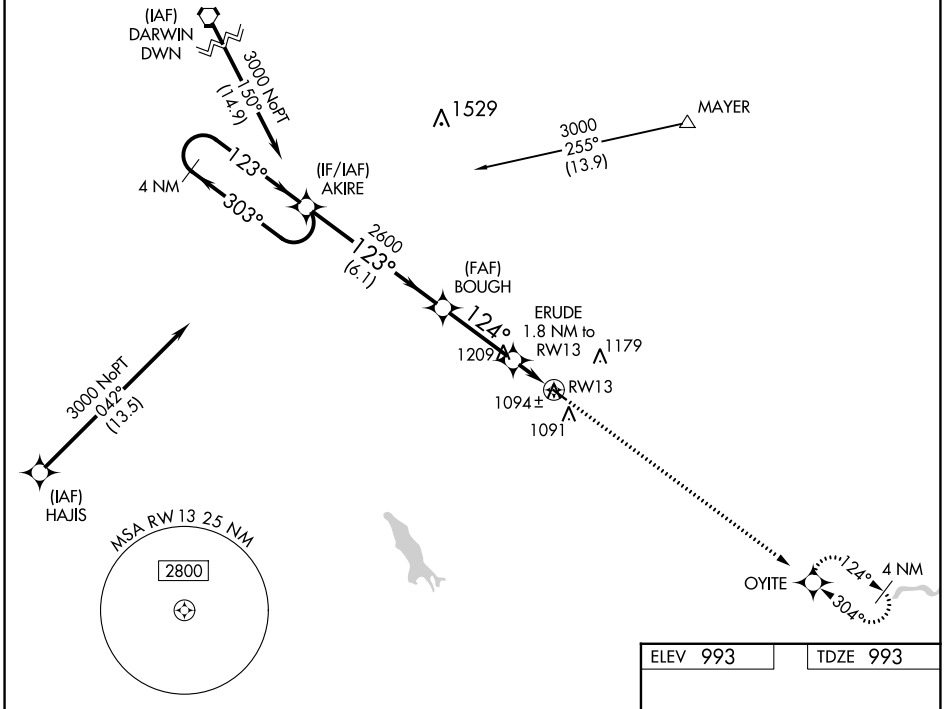
# RNAV (GPS) RWY 13

GLENCOE MUNI (GYL)

**▽** For uncompensated Baro-VNAV systems, LNAV/VNAV NA below -16°C (4°F) or above 54°C (130°F). DME/DME RNP-0.3 NA. Rwy 13 helicopter visibility reduction below 3/4 SM NA.

**MISSED APPROACH:**  
Climb to 3000 direct OYITE and hold.

AWOS-3 <b>119.625</b>	MINNEAPOLIS APP CON <b>134.7 284.7</b>	UNICOM <b>122.8 (CTAF) 0</b>
--------------------------	---	---------------------------------



ELEV 993	TDZE 993
----------	----------

REIL Rwy 13 and 31 **0**  
MIRL Rwy 13-31 **0**

CATEGORY	A	B	C	D
LPV DA	1270-1	277 (300-1)		NA
LNAV/VNAV DA	1246-1	253 (300-1)		NA
LNAV MDA	1360-1	367 (400-1)		NA
<b>C</b> CIRCLING	1420-1 427 (500-1)	1480-1 487 (500-1)		NA

NC-1, 22 FEB 2024 to 21 MAR 2024

NC-1, 22 FEB 2024 to 21 MAR 2024

WAAS CH <b>48937</b> W31A	APP CRS <b>304°</b>	Rwy Idg <b>3300</b> TDZE <b>992</b> Apt Elev <b>993</b>
---------------------------------	------------------------	--

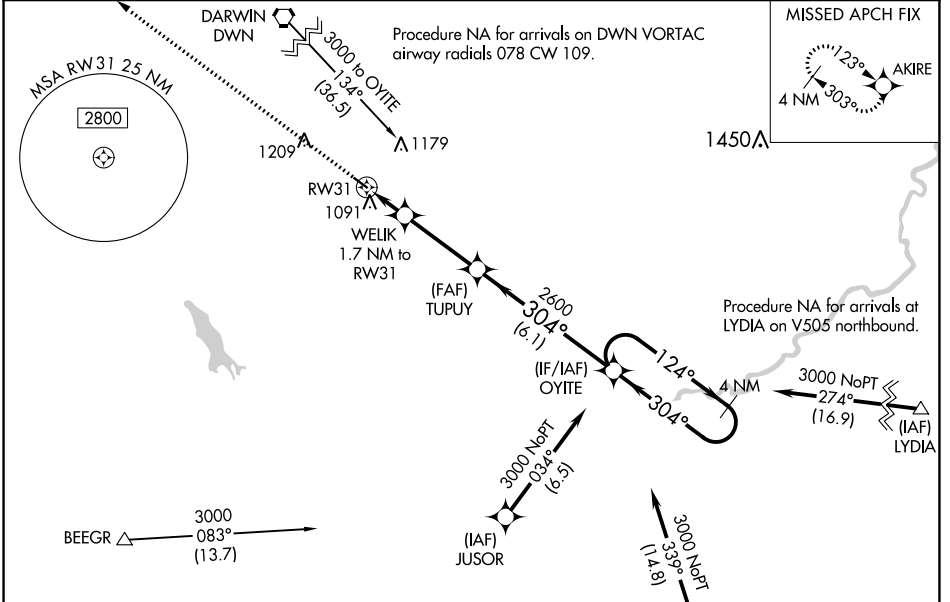
# RNAV (GPS) RWY 31

GLENCOE MUNI (GYL)

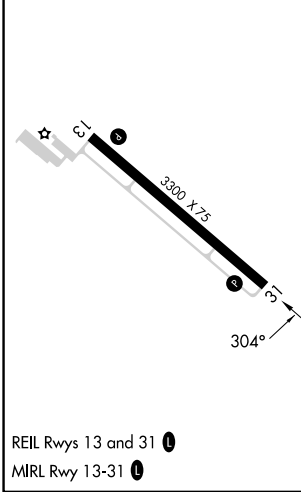
**⚠** Baro-VNAV NA when using Hutchinson altimeter setting. For uncompensated Baro-VNAV systems, LNAV/VNAV NA below -16°C (4°F) or above 54°C (130°F). DME DME/RNP-0.3 NA. VDP NA with Hutchinson altimeter setting. When local altimeter setting not received, use Hutchinson altimeter setting and increase all DA 43 feet and all MDA 60 feet, increase LPV and LNAV/VNAV Cat A/B visibility 1/8 mile.

**⚠** MISSED APPROACH: Climb to 3000 direct AKIRE and hold.

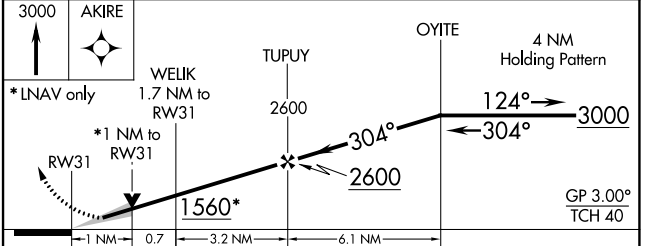
AWOS-3 <b>119.625</b>	MINNEAPOLIS APP CON <b>134.7 284.7</b>	UNICOM <b>122.8 (CTAF)</b> <b>📶</b>
--------------------------	---	--



ELEV <b>993</b>	TDZE <b>992</b>
-----------------	-----------------



Procedure NA for arrivals at ZANNA on V456 southwest bound.



	A	B	C	D
CATEGORY	A	B	C	D
LPV DA	1242-7/8	250 (300-7/8)		NA
LNAV/VNAV DA	1253-7/8	261 (300-7/8)		NA
LNAV MDA	1360-1	368 (400-1)		NA
<b>C</b> CIRCLING	1420-1 427 (500-1)	1480-1 487 (500-1)		NA

NC-1, 22 FEB 2024 to 21 MAR 2024

NC-1, 22 FEB 2024 to 21 MAR 2024