

LOC I-GWO 111.3	APP CRS 182°	Rwy ldg TDZE Apt Elev	6501 145 162
---------------------------	------------------------	-----------------------------	---

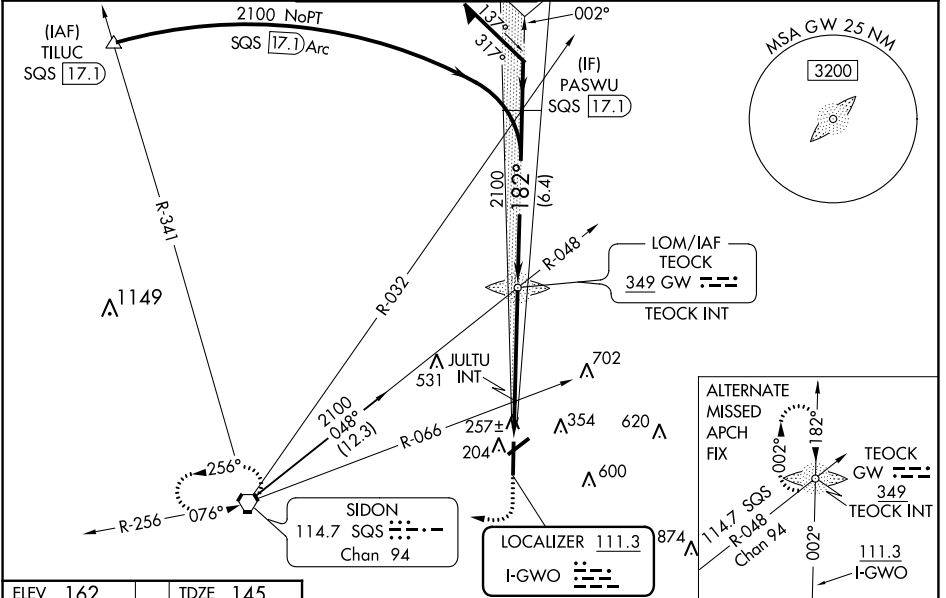
ILS or LOC RWY 18

GREENWOOD-LEFLORE (GWO)

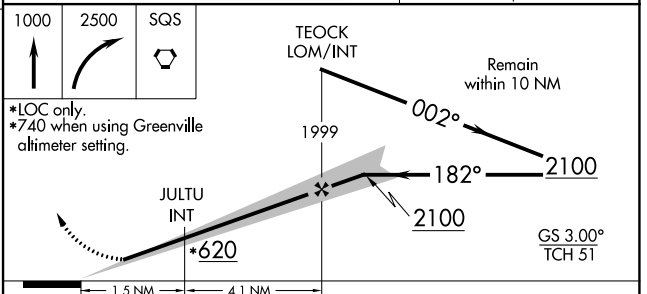
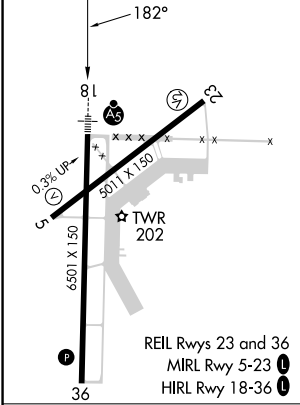
When local altimeter setting not received, use Greenville altimeter setting: increase DA to 580 feet and all visibilities ¼ SM; increase all MDAs 120 feet and visibility S-LOC 18 Cat C/D ¼ SM and Circling Cat C ½ SM.
 ⚠ Circling Cat C ½ SM and JULTU FIX minimums S-LOC 18 Cat C/D ¼ SM and Circling Cat C ½ SM.
 ⚠ For inop ALS, increase S-LOC 18 Cat A/B visibility to 1 SM, and Cat C/D to 1 ½ SM, and JULTU FIX minimums S-LOC 18 all Cats to 1 SM. For inop ALS when using Greenville altimeter setting, increase S-ILS 18 all Cats visibility to 1 ½ SM, and S-LOC 18 Cat A/B to 1 SM, and JULTU FIX minimums S-LOC 18 Cat A/B to 1 SM, and Cat C/D to 1 ½ SM. Circling Rwy 5, 23 NA at night.
 Rwy 18 helicopter visibility reduction below ¼ SM NA.

MALSR MISSED APPROACH: Climb to 1000 then climbing right turn to 2500 direct SQS VORTAC and hold.

ASOS 119.975	MEMPHIS CENTER 132.5 259.1	GREENWOOD TOWER ★ 118.35 (CTAF) 0 367.6	GND CON 125.55 373.4	CLNC DEL 125.55	UNICOM 122.95
------------------------	--------------------------------------	---	--------------------------------	---------------------------	-------------------------



ELEV 162	TDZE 145
----------	----------



CATEGORY	A	B	C	D
S-ILS 18	471-¾ 326 (400-¾)			
S-LOC 18	620-¾	475 (500-¾)	620-1	475 (500-1)
<input checked="" type="checkbox"/> CIRCLING	760-1	598 (600-1)	1000-2 ½ 838 (900-2 ½)	1120-3 958 (1000-3)
JULTU FIX MINIMUMS (DUAL VOR RECEIVERS REQUIRED)				
S-LOC 18	520-¾ 375 (400-¾)			
<input checked="" type="checkbox"/> CIRCLING	760-1	598 (600-1)	1000-2 ½ 838 (900-2 ½)	1120-3 958 (1000-3)

FAF to MAP 5.6 NM					
Knots	60	90	120	150	180
Min:Sec	5:36	3:44	2:48	2:14	1:52

WAAS CH 50199 W18A	APP CRS 182°	Rwy ldg TDZE Apt Elev	6501 145 162
--	------------------------	-----------------------------	---

RNAV (GPS) RWY 18

GREENWOOD-LEFLORE (GWO)

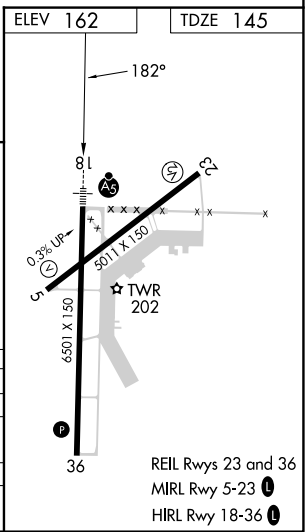
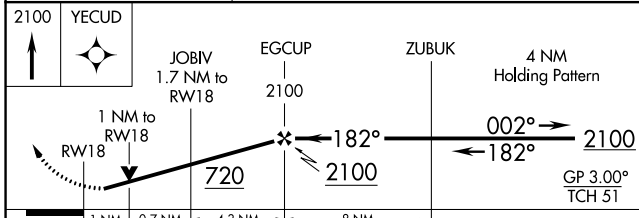
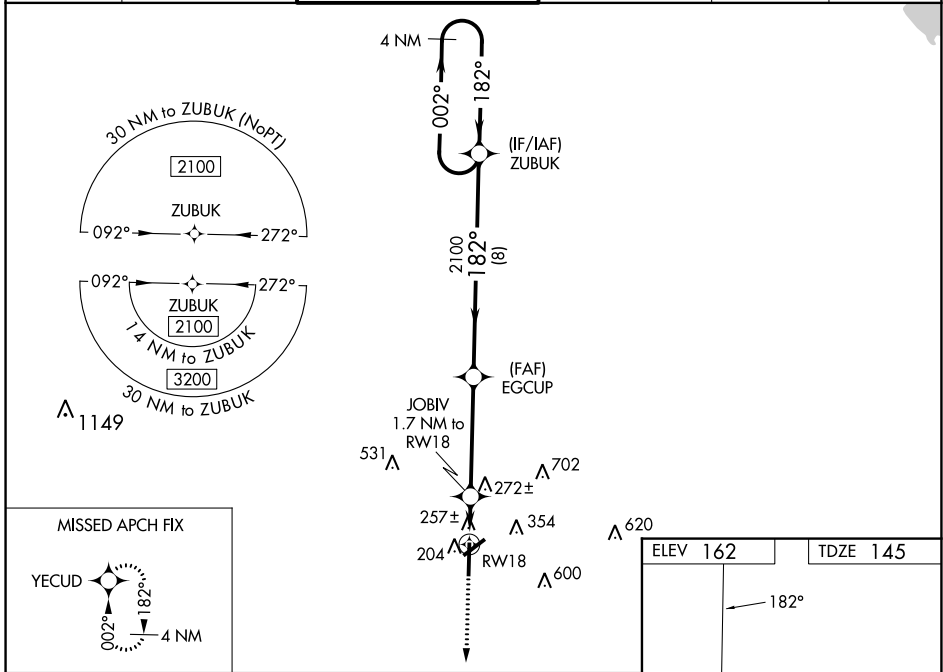
RNP APCH-GPS.

For uncompensated Baro-VNAV systems, LNAV/VNAV NA below -22°C or above 54°C. Baro-VNAV and VDP NA when using Greenville altimeter setting. For inop ALS when using Greenville altimeter setting, increase LPV all Cats visibility to 1½ SM, and LNAV/VNAV all Cats to 1¼ SM, and LNAV Cat A/B to 1 SM, and Cat C/D to 1¾ SM. When local altimeter setting not received, use Greenville altimeter setting: increase LPV DA to 580 feet and visibility ¼ SM, LNAV/VNAV DA to 675 feet and visibility ¾ SM; increase all MDAS 120 feet and visibility LNAV Cat C/D ¼ SM and Circling Cat C ½ SM. For inop ALS, increase LNAV/VNAV all Cats visibility to 1¾ SM, and LNAV all Cats to 1 SM. Rwy 18 helicopter visibility reduction below ¾ SM NA. Circling Rwy 5, 23 NA at night.

MALSRS
A5

MISSED APPROACH:
Climb to 2100 direct YECUD and hold.

ASOS 119,975	MEMPHIS CENTER 132,5 259,1	GREENWOOD TOWER ★ 118,35 (CTAF) 0 367,6	GND CON 125,55 373,4	CLNC DEL 125,55	UNICOM 122,95
------------------------	--------------------------------------	---	--------------------------------	---------------------------	-------------------------



CATEGORY	A	B	C	D
LPV DA		471-¾	326 (400-¾)	
LNAV/VNAV DA		566-1	421 (500-1)	
LNAV MDA		520-¾	375 (400-¾)	
CIRCLING	760-1	598 (700-1)	1000-2½ 838 (900-2½)	1120-3 958 (1000-3)

SC-4, 22 FEB 2024 to 21 MAR 2024

SC-4, 22 FEB 2024 to 21 MAR 2024

WAAS CH 69631 W36A	APP CRS 002°	Rwy Idg TDZE 142 Apt Elev 162	6501
--	------------------------	---	-------------

RNAV (GPS) RWY 36

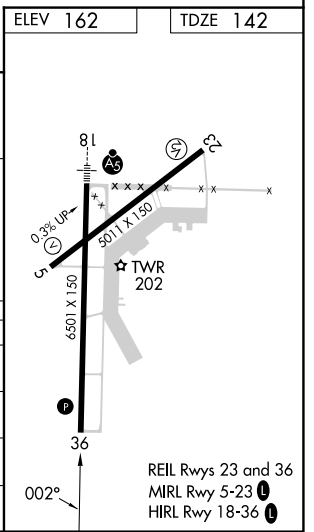
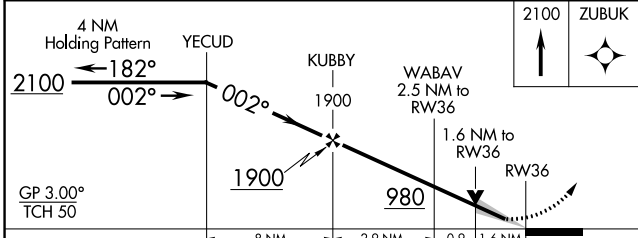
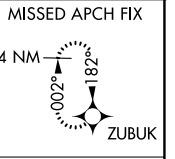
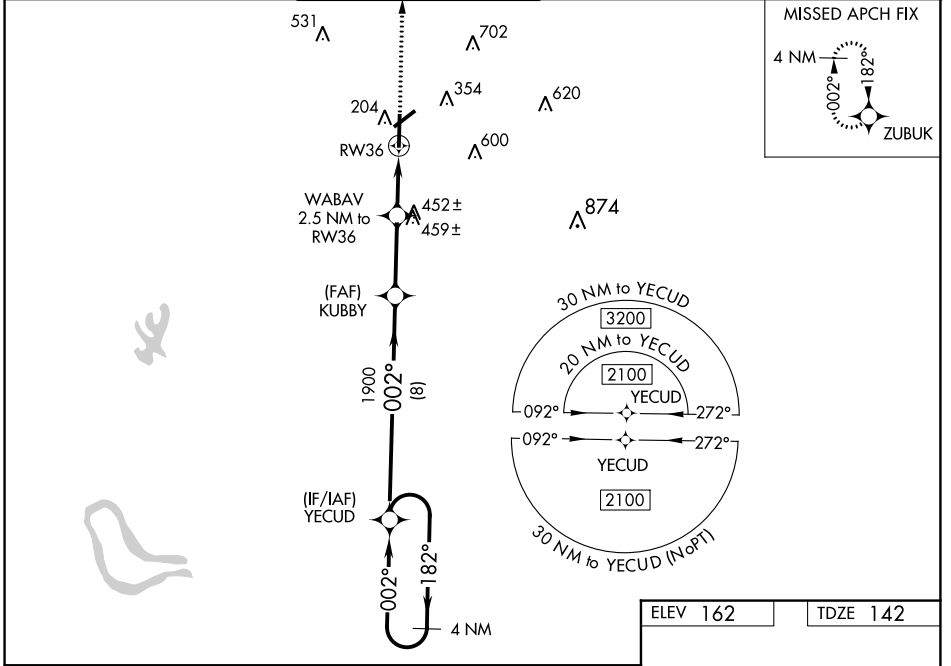
GREENWOOD-LEFLORE (GWO)

RNP APCH-GPS.

For uncompensated Baro-VNAV systems, LNAV/VNAV NA below -22°C or above 54°C. VDP and Baro-VNAV NA when using Greenville altimeter setting. Circling Rwy 5, 23 NA at night. When local altimeter setting not received, use Greenville altimeter setting: increase LPV DA to 501 feet and visibility ½ SM, LNAV/VNAV DA to 667 feet and visibility ¾ SM; increase all MDAs 120 feet and visibility LNAV Cat C/D ¼ SM and Circling Cat C ½ SM.

MISSED APPROACH: Climb to 2100 direct ZUBUK and hold.

ASOS 119.975	MEMPHIS CENTER 132.5 259.1	GREENWOOD TOWER * 118.35 (CTAF) 0 367.6	GND CON 125.55 373.4	CLNC DEL 125.55	UNICOM 122.95
------------------------	--------------------------------------	---	--------------------------------	---------------------------	-------------------------



CATEGORY	A	B	C	D
LPV DA	392-¾		250 (300-¾)	
LNAV/VNAV DA	558-1⅜		416 (400-1⅜)	
LNAV MDA	700-1 558 (600-1)		700-1⅝ 558 (600-1⅝)	
CIRCLING	760-1 598 (600-1)		1000-2½ 838 (900-2½) 1120-3 958 (1000-3)	

SC-4, 22 FEB 2024 to 21 MAR 2024

SC-4, 22 FEB 2024 to 21 MAR 2024

WAAS CH 69526 W05A	APP CRS 053°	Rwy Idg TDZE Apt Elev	5011 149 162
--	------------------------	-----------------------------	---

RNAV (GPS) RWY 5

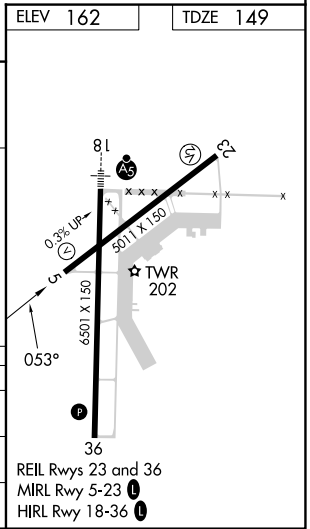
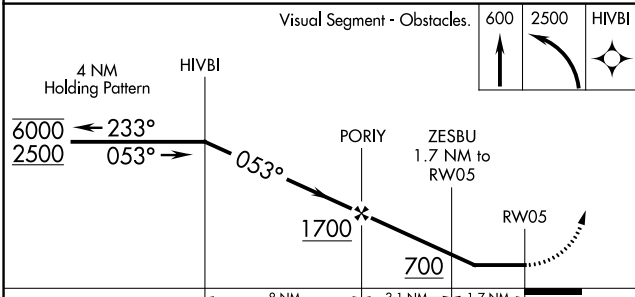
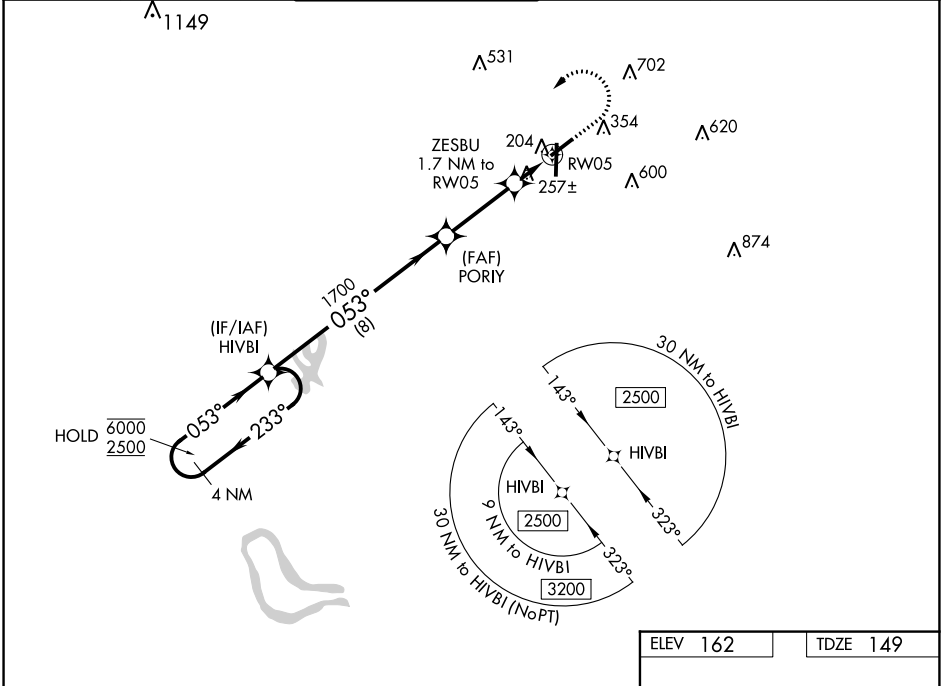
GREENWOOD-LEFLORE (GWO)

RNP APCH - GPS.

▼ Rwy 5 helicopter visibility reduction below 1 SM NA. When local altimeter setting not received, use Greenville altimeter setting and increase all MDAs 120 feet and visibility LP Cat C/D 3/8 SM, LNAV Cat C/D 1/4 SM and Circling Cat C 1/2 SM. Straight-in Rwy 5 NA at night, Circling Rwy 5, 23 NA at night.

MISSED APPROACH: Climb to 600 then climbing left turn to 2500 direct HVB1 and hold.

ASOS	MEMPHIS CENTER	GREENWOOD TOWER ★	GND CON	CLNC DEL	UNICOM
119.975	132.5 259.1	118.35 (CTAF) 0 367.6	125.55 373.4	125.55	122.95



CATEGORY	A	B	C	D
LP MDA	520-1 371 (400-1)			
LNAV MDA	540-1	391 (400-1)	540-1 1/8	391 (400-1 1/8)
CIRCLING	760-1	598 (600-1)	1000-2 1/2 838 (900-2 1/2)	1120-3 958 (1000-3)

VORTAC SQS	APP CRS	Rwy Idg	5011
114.7	076°	TDZE	149
Chan 94		Apt Elev	162

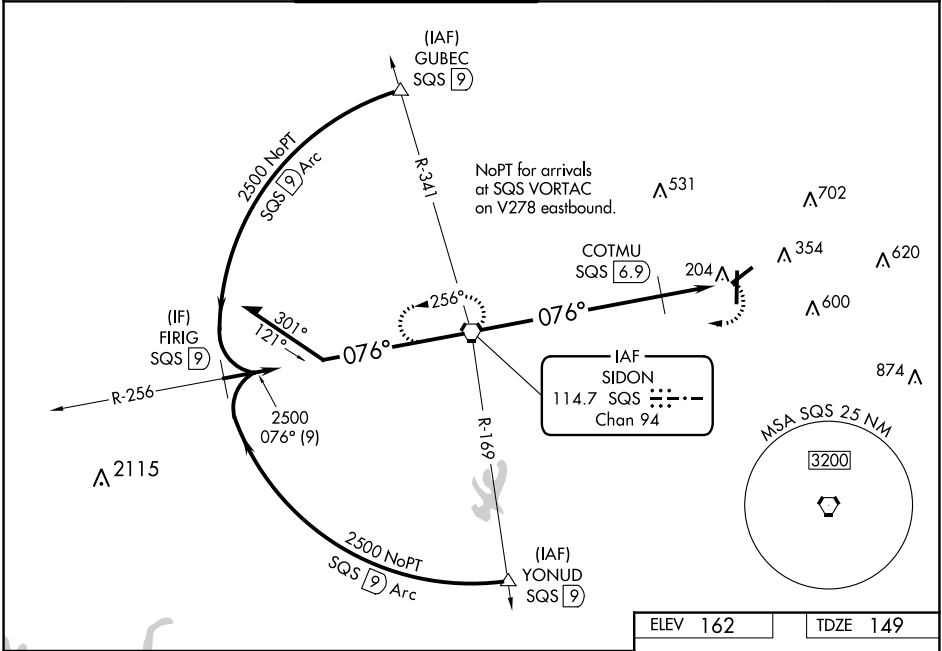
VOR RWY 5

GREENWOOD-LEFLORE (GWO)

When local altimeter setting not received, use Greenville altimeter setting and increase all MDAs 120 feet and visibility S-5 Cat B and Circling Cat A/B ¼ SM, and S-5 Cat C/D and Circling Cat C ½ SM and COTMU Fix Minimums S-5 Cat C/D ¼ SM and Circling Cat C ½ SM. Rwy 5 helicopter visibility reduction below 1 SM NA. Straight-in Rwy 5 NA at night, Circling Rwy 5, 23 NA at night.

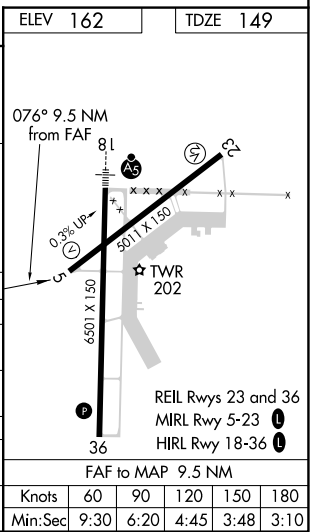
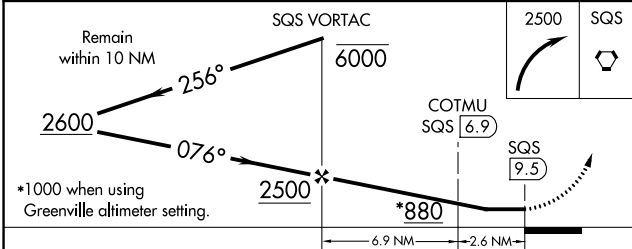
MISSED APPROACH:
Climbing right turn to 2500 direct SQS VORTAC and hold.

ASOS 119.975	MEMPHIS CENTER 132.5 259.1	GREENWOOD TOWER * 118.35 (CTAF) 367.6	GND CON 125.55 373.4	CLNC DEL 125.55	UNICOM 122.95
-----------------	-------------------------------	--	-------------------------	--------------------	------------------



SC-4, 22 FEB 2024 to 21 MAR 2024

SC-4, 22 FEB 2024 to 21 MAR 2024



CATEGORY	A	B	C	D
S-5	880-1	731 (800-1)	880-2	731 (800-2)
C CIRCLING	880-1	718 (800-1)	1000-2½ 838 (900-2½)	1120-3 958 (1000-3)
COTMU FIX MINIMUMS (DME REQUIRED)				
S-5	600-1	451 (500-1)	600-1¾	451 (500-1¾)
C CIRCLING	760-1	598 (600-1)	1000-2½ 838 (900-2½)	1120-3 958 (1000-3)

Knots	60	90	120	150	180
Min:Sec	9:30	6:20	4:45	3:48	3:10