

WAAS CH 57923 W23A	APP CRS 235°	Rwy Idg TDZE Apt Elev	3504 1224 1224
--	------------------------	-----------------------------	---

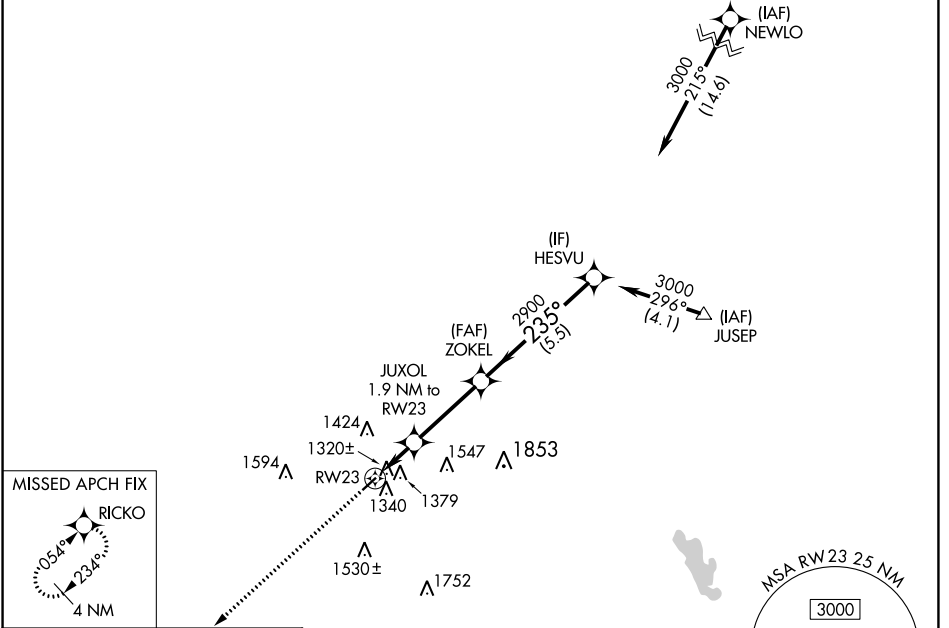
RNAV (GPS) RWY 23

GALLION MUNI (GQQ)

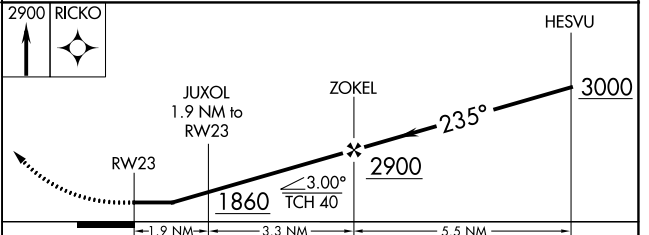
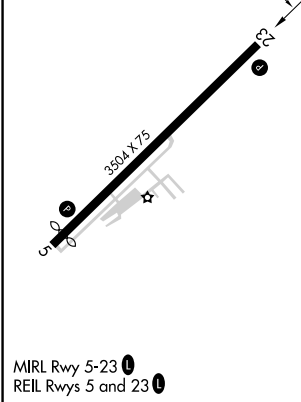
NA Helicopter visibility reduction below 3/4 SM NA. DME/DME RNP-0.3 NA. Use Mansfield altimeter setting. Circling Rwy 5 NA at night.

MISSED APPROACH: Climb to 2900 direct RICKO and hold.

CLEVELAND APP CON ★ 124.2 360.65	CLNC DEL 126.8	UNICOM 122.8 (CTAF) 1
--	--------------------------	---------------------------------



ELEV 1224	TDZE 1224
-----------	-----------



CATEGORY	A	B	C	D
LP MDA	1620-1	396 (400-1)	1620-1 1/8 396 (400-1 1/8)	NA
LNAV MDA	1760-1	536 (600-1)	1760-1 1/8 536 (600-1 1/8)	NA
CIRCLING	1800-1 576 (600-1)	1960-1 736 (800-1)	1960-2 736 (800-2)	NA

WAAS CH 69223 W05A	APP CRS 054°	Rwy Idg TDZE Apt Elev	3318 1224 1224
--	------------------------	-----------------------------	---

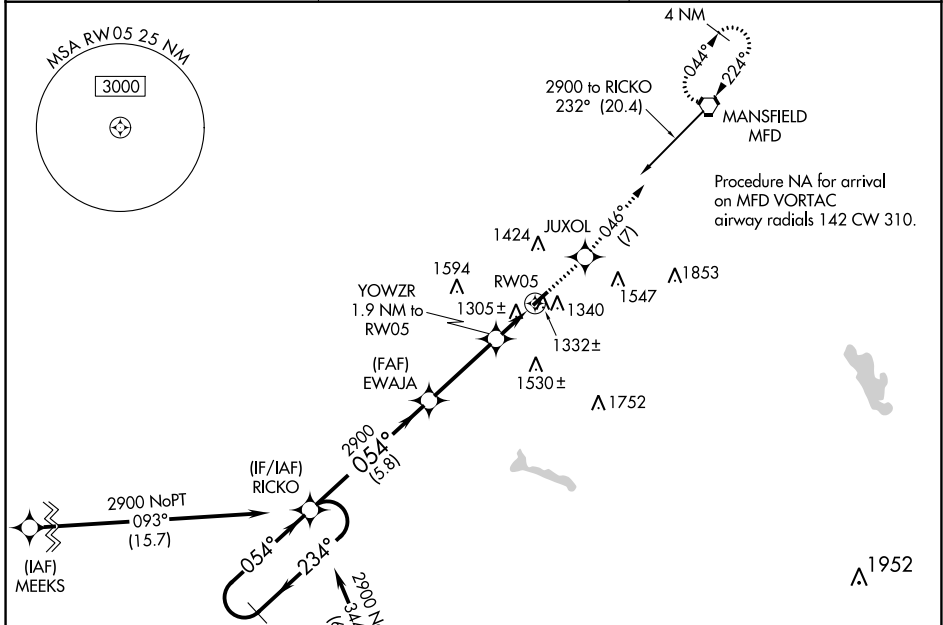
RNAV (GPS) RWY 5

GALLION MUNI (GQQ)

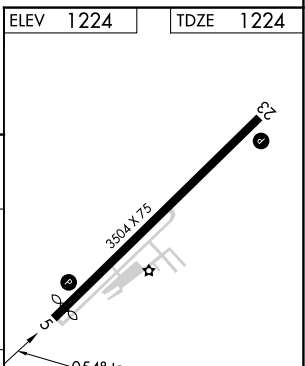
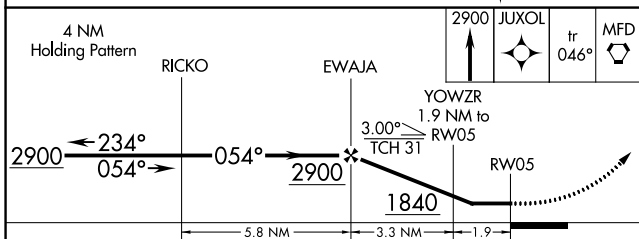
NA Helicopter visibility reduction below 1 SM NA.
DME/DME RNP-0.3 NA. Use Mansfield altimeter setting.
Straight-in Rwy 5 NA at night, Circling Rwy 5 NA at night.

MISSED APPROACH: Climb to 2900 direct JUXOL and on track 046° to MFD VORTAC and hold.

CLEVELAND APP CON ★ 124.2 360.65	CLNC DEL 126.8	UNICOM 122.8 (CTAF) 1
--	--------------------------	---------------------------------



ELEV 1224	TDZE 1224
-----------	-----------



CATEGORY	A	B	C	D
LP MDA	1600-1 376 (400-1)			NA
LNAV MDA	1620-1	396 (400-1)	1620-1½ 396 (400-1½)	NA
CIRCLING	1800-1 576 (600-1)	1960-1 736 (800-1)	1960-2 736 (800-2)	NA

MIRL Rwy 5-23 1
REIL Rws 5 and 23 1

EC-2, 22 FEB 2024 to 21 MAR 2024

EC-2, 22 FEB 2024 to 21 MAR 2024

VORTAC MFD 108.8 Chan 25	APP CRS 224°	Rwy Idg TDZE Apt Elev 3504 1224 1224
--	------------------------	--

VOR RWY 23

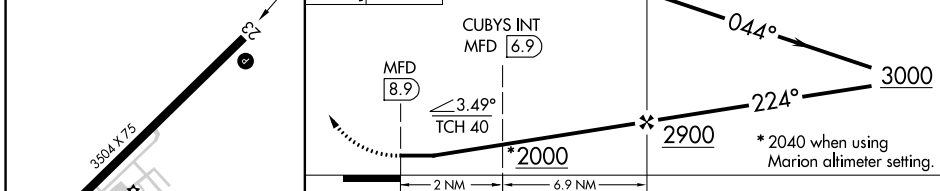
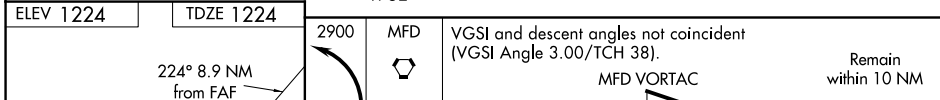
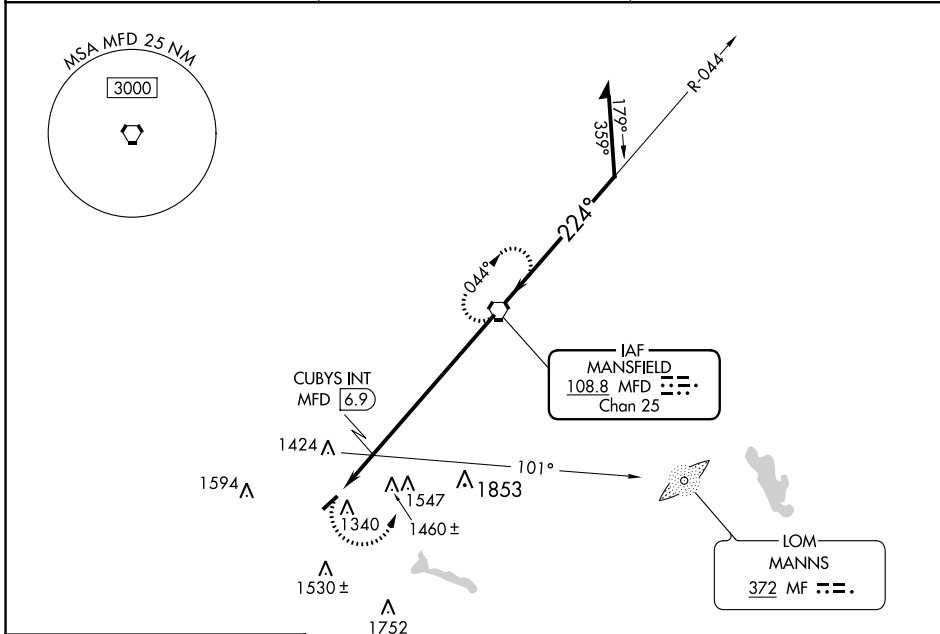
GALLION MUNI (GQQ)

RADAR required for procedure entry.

Procedure NA at night. Use Mansfield altimeter setting; when not received, use Marion altimeter setting and increase all MDAs 40 feet, increase CUBYS fix minimums S-23 all Cats visibility 1/8 SM and Circling Cat C 1/4 SM. Rwy 23 helicopter visibility reduction below 1 SM NA.

MISSED APPROACH: Climbing left turn to 2900 direct MFD VORTAC and hold.

CLEVELAND APP CON * 124.2 360.65	CLNC DEL 126.8	UNICOM 122.8 (CTAF) 0
--	--------------------------	---------------------------------



CATEGORY	A	B	C	D
S-23	2000-1 776 (800-1)	2000-1 1/4 776 (800-1 1/4)	2000-2 1/2 776 (800-2 1/2)	NA
CIRCLING	2000-1 776 (800-1)	2000-1 1/4 776 (800-1 1/4)	2000-2 1/2 776 (800-2 1/2)	NA
CUBYS FIX MINIMUMS				
S-23	1760-1	536 (600-1)	1760-1 5/8 536 (600-1 5/8)	NA
CIRCLING	1800-1 576 (600-1)	1960-1 736 (800-1)	1960-2 736 (800-2)	NA

REIL Rwys 5 and 23
MIRL Rwy 5-23

FAF to MAP 8.9 NM

Knots	60	90	120	150	180
Min:Sec	8:54	5:56	4:27	3:34	2:58

EC-2, 22 FEB 2024 to 21 MAR 2024

EC-2, 22 FEB 2024 to 21 MAR 2024