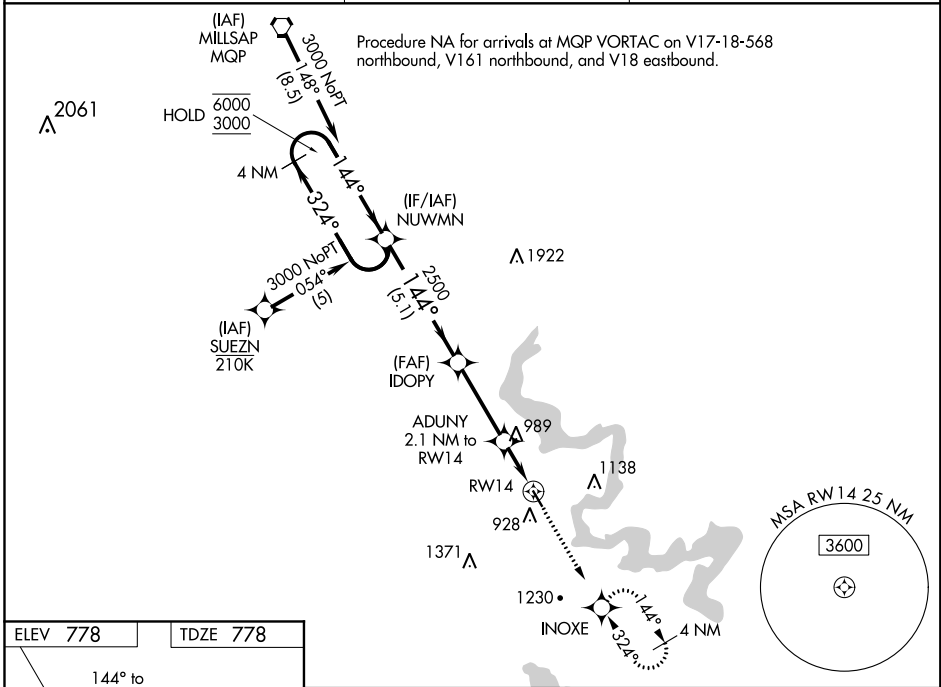


WAAS CH 99618 W14A	APP CRS 144°	Rwy ldg 3603 TDZE 778 Apt Elev 778
---------------------------------	------------------------	---

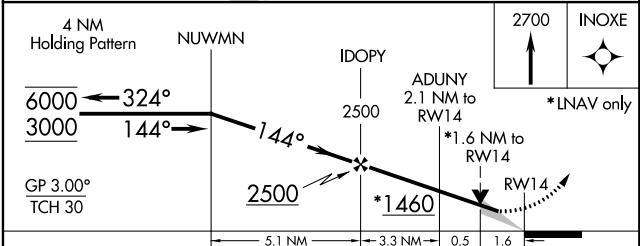
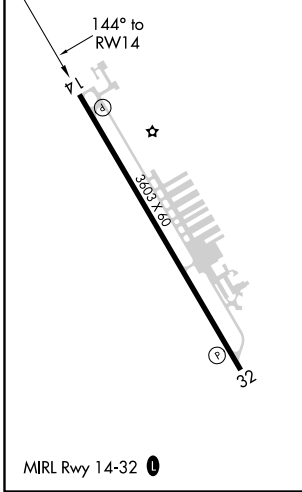
RNAV (GPS) RWY 14

GRANBURY RGNL (GDJ)

RNP APCH.		MISSED APPROACH: Climb to 2700 direct INOXE and hold, continue climb-in-hold to 2700.
<p>▽ Circling Rwy 32 NA at night. For uncompensated Baro-VNAV systems, LNAV/VNAV NA below -16°C or above 54°C.</p>	AWOS-3 118.925	FORT WORTH CENTER 127.15 314.0
		UNICOM 123.0 (CTAF) 0



ELEV 778	TDZE 778
----------	----------



CATEGORY	A	B	C	D
LPV DA	1036-3/4 258 (300-3/4)			NA
LNAV/VNAV DA	1109-1 331 (400-1)			NA
LNAV MDA	1300-1	522 (600-1)	1300-1 1/2 522 (600-1 1/2)	NA
C CIRCLING	1340-1 562 (600-1)	1380-1 602 (700-1)	1440-1 3/4 662 (700-1 3/4)	NA

SC-2, 22 APR 2021 to 20 MAY 2021

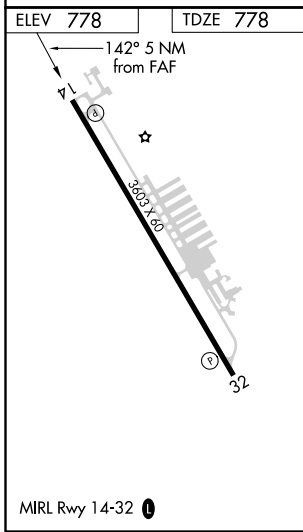
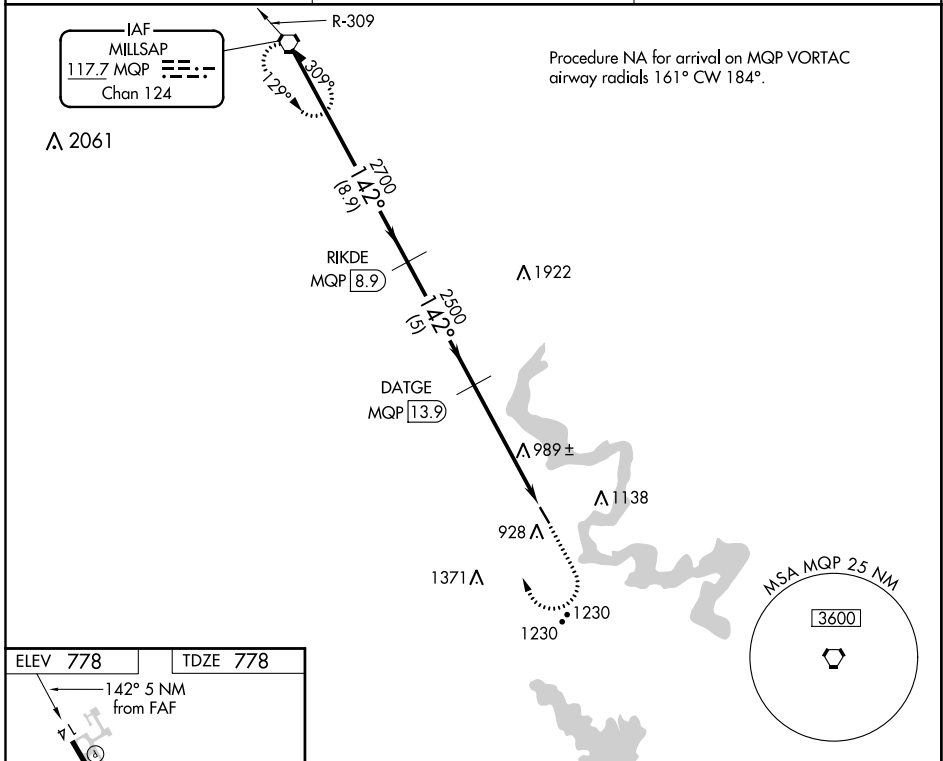
SC-2, 22 APR 2021 to 20 MAY 2021

VORTAC MQP 117.7 Chan 124	APP CRS 142°	Rwy Idg 3603 TDZE 778 Apt Elev 778
---	------------------------	---

VOR/DME RWY 14

GRANBURY RGNL (G.DJ)

<p>▼ Use Fort Worth Meacham Intl altimeter setting. Night Landing: ▲ NA Rwy 14 NA. Helicopter visibility reduction below 1 SM NA.</p>	<p>MISSED APPROACH: Climb to 2000, then climbing right turn to 3000 direct MQP VORTAC and hold.</p>	
<p>AWOS-3 118.925</p>	<p>FORT WORTH CENTER 127.15 314.0</p>	<p>UNICOM 123.0 (CTAF) 0</p>



VGSI and descent angles not coincident (VGSI angle 3.00/TCH 30).

MQP VORTAC	RIKDE MQP [8.9]	DATGE MQP [13.9]	MQP [18.9]
3000	2700	2500	
142°		3.18° TCH 40	
8.9 NM	5 NM	5 NM	

CATEGORY	A	B	C	D
S-14	1400-1	622 (700-1)	1400-1¾ 622 (700-1¾)	NA
C CIRCLING	1420-1 642 (700-1)	1440-1 662 (700-1)	1440-1¾ 662 (700-1¾)	NA

SC-2, 22 APR 2021 to 20 MAY 2021

SC-2, 22 APR 2021 to 20 MAY 2021