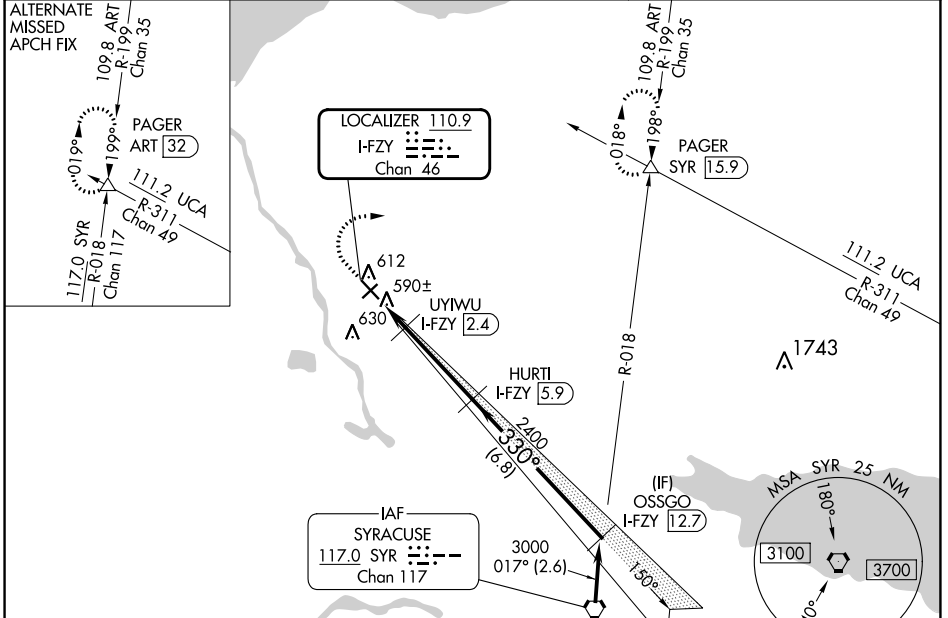


LOC/DME I-FZY 110.9 Chan 46	APP CRS 330°	Rwy Idg 4782 TDZE 471 Apt Elev 475
---	------------------------	---

ILS or LOC RWY 33

OSWEGO COUNTY (FZY)

DME required.		MISSED APPROACH: Climb to 1200 then climbing right turn to 3000 on heading 100° and SYR VORTAC R-018 to PAGER/SYR 15.9 DME and hold.
<p>⚠️ NA Circling Rwy 24 NA at night. Rwy 33 helicopter visibility reduction below ¾ SM NA.</p>		
ASOS 119.275	SYRACUSE APP CON 126.125 269.125	UNICOM 123.0 (CTAF) 0

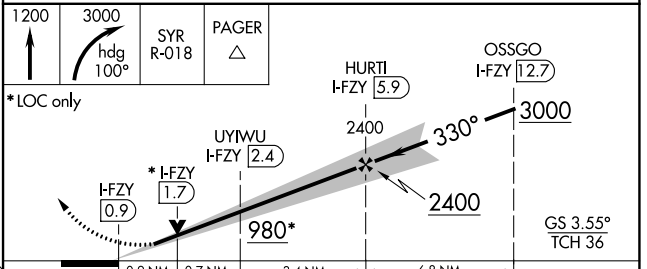
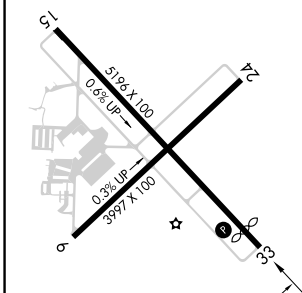


NE-2, 22 FEB 2024 to 21 MAR 2024

NE-2, 22 FEB 2024 to 21 MAR 2024

ELEV 475	D	TDZE 471
-----------------	----------	-----------------

Procedure NA for arrivals at SYR VORTAC on V29 southbound.



- MIRL Rwy 6-24 0
- HIRL Rwy 15-33 0
- REIL Rwy 15 and 33 0
- REIL Rwy 6 and 24

CATEGORY	A	B	C	D
S-ILS 33	814-1	343 (400-1)		NA
S-LOC 33	840-1	369 (400-1)		NA
C CIRCLING	920-1 445 (500-1)	940-1 465 (500-1)	960-1½ 485 (500-1½)	NA

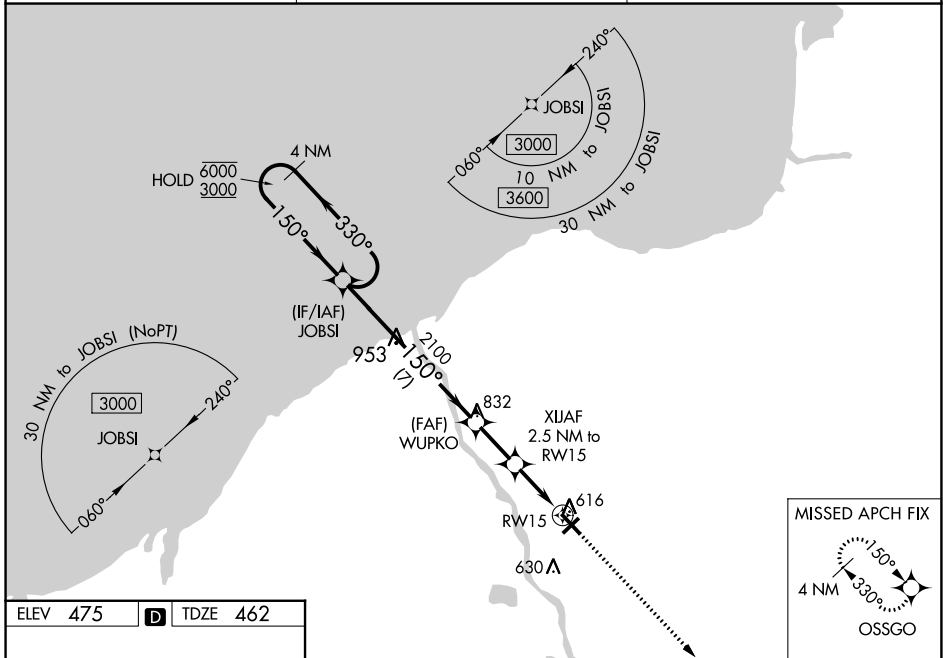
WAAS CH 72820 W15A	APP CRS 150°	Rwy ldg TDZE Apt Elev	5196 462 475
---------------------------------	------------------------	-----------------------------	---

RNAV (GPS) RWY 15

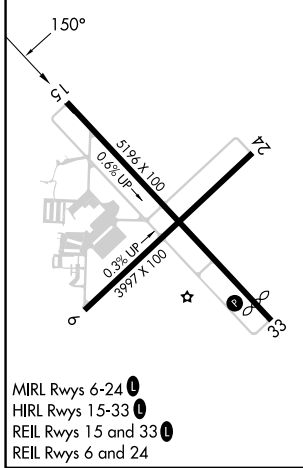
OSWEGO COUNTY (FZY)

RNP APCH.	MISSED APPROACH: Climb to 3000 direct OSSGO and hold.
<p>▽ Rwy 15 helicopter visibility reduction below ¾ SM NA. ▲ For uncompensated Baro-VNAV systems, LNAV/VNAV NA below -24°C or above 54°C.</p>	

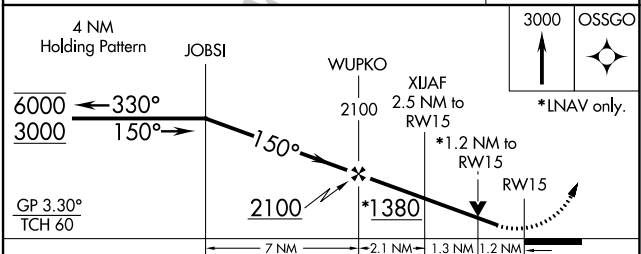
ASOS 119.275	SYRACUSE APP CON 126.125 269.125	UNICOM 123.0 (CTAF) 0
------------------------	--	---------------------------------



ELEV 475	D	TDZE 462
-----------------	----------	-----------------



MIRL Rwys 6-24
HIRL Rwys 15-33
REIL Rwys 15 and 33
REIL Rwys 6 and 24



CATEGORY	A	B	C	D
LPV DA	783-1 321 (400-1)			NA
LNAV/VNAV DA	887-1¼ 425 (500-1¼)			NA
LNAV MDA	920-1	458 (500-1)	920-1⅜ 458 (500-1⅜)	NA
CIRCLING	920-1 445 (500-1)	940-1 465 (500-1)	960-1½ 485 (500-1½)	NA

NE-2, 22 FEB 2024 to 21 MAR 2024

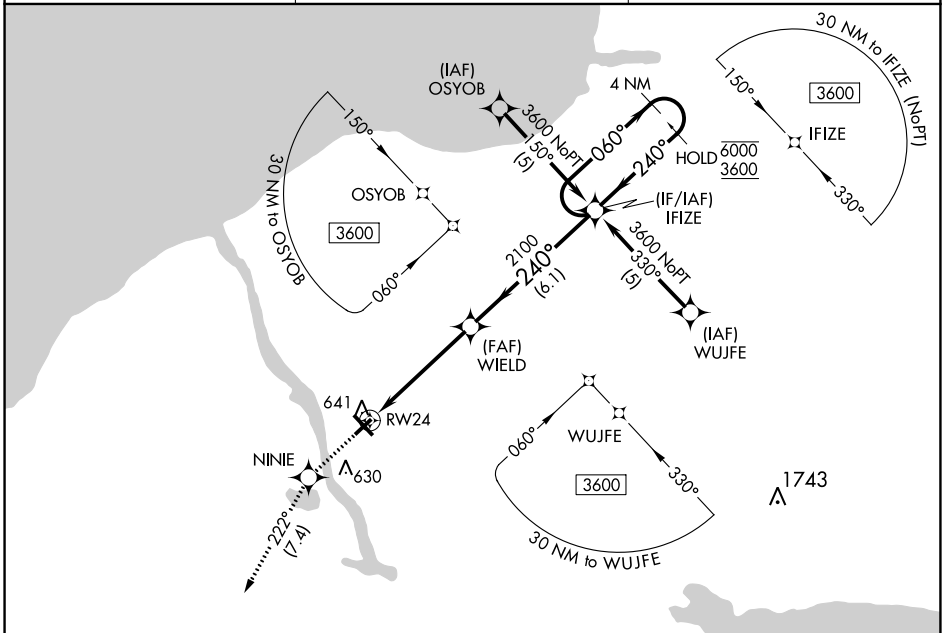
NE-2, 22 FEB 2024 to 21 MAR 2024

APP CRS 240°	Rwy Idg 3997
	TDZE 469
	Apt Elev 475

RNAV (GPS) RWY 24

OSWEGO COUNTY (FZY)

RNP APCH.		MISSED APPROACH: Climb to 3000 direct NINIE and on track 222° to LYSAN and hold.
Rwy 24 helicopter visibility reduction below 1 SM NA.		
ASOS 119.275	SYRACUSE APP CON 126.125 269.125	UNICOM 123.0 (CTAF) 0

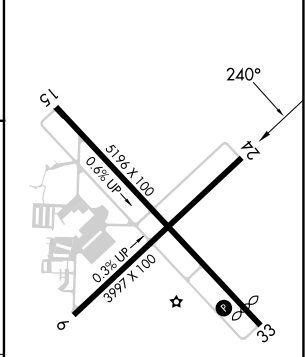
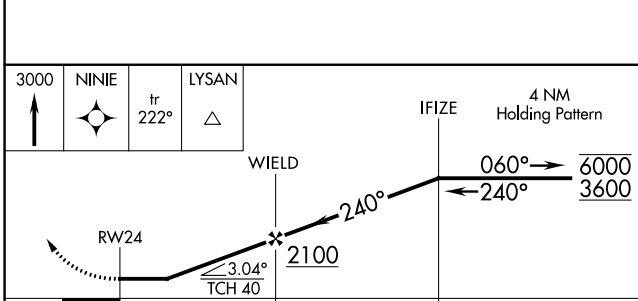


NE-2, 22 FEB 2024 to 21 MAR 2024

NE-2, 22 FEB 2024 to 21 MAR 2024



ELEV 475	TDZE 469
----------	----------



CATEGORY	A	B	C	D
LNVA MDA	960-1 491 (500-1)		960-1 491 (500-1 3/8)	960-1 491 (500-1 1/2)
CIRCLING	1000-1 525 (600-1)		1000-1 525 (600-1 1/2)	1040-2 565 (600-2)

- MIRL Rwy 6-24 0
- HIRL Rwy 15-33 0
- REIL Rwy 15 and 33 0
- REIL Rwy 6 and 24

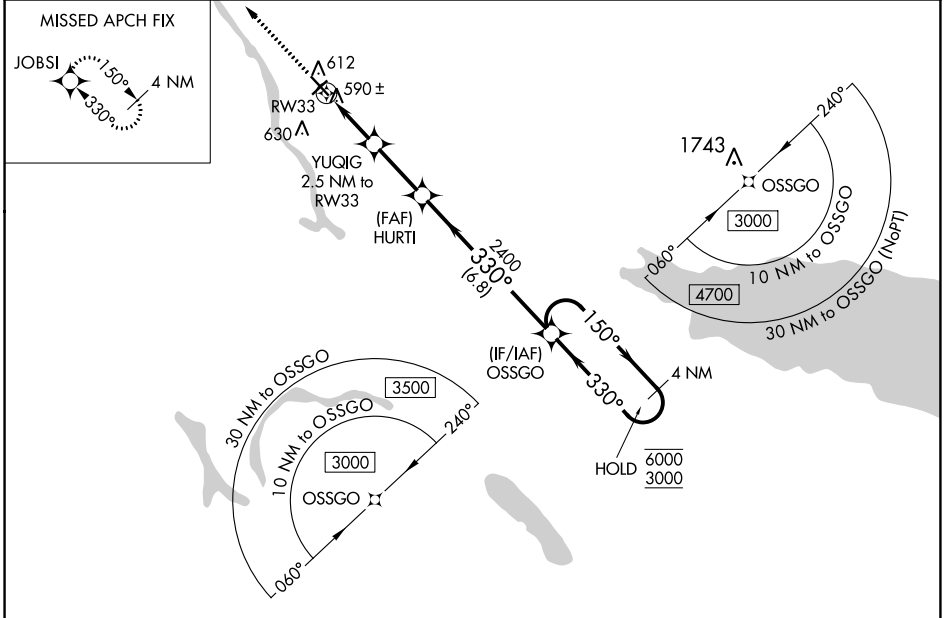
WAAS CH 82520 W 33A	APP CRS 330°	Rwy Idg 4782 TDZE 471 Apt Elev 475
---	------------------------	---

RNAV (GPS) RWY 33

OSWEGO COUNTY (FZY)

RNP APCH.	MISSED APPROACH: Climb to 3000 direct JOBSI and hold.
Rwy 33 helicopter visibility reduction below 3/4 SM NA. For uncompensated Baro-VNAV systems, LNAV/VNAV NA below -22°C or above 54°C.	

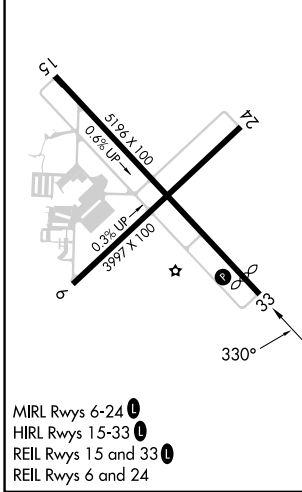
ASOS 119.275	SYRACUSE APP CON 126.125 269.125	UNICOM 123.0 (CTAF)
------------------------	--	-------------------------------



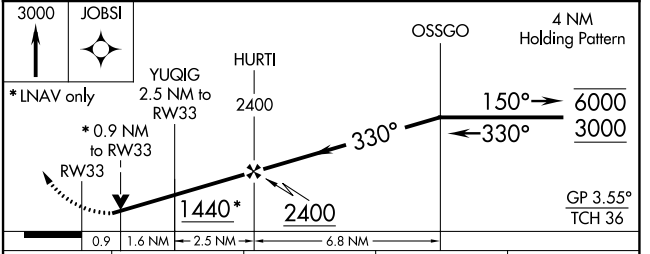
NE-2, 22 FEB 2024 to 21 MAR 2024

NE-2, 22 FEB 2024 to 21 MAR 2024

ELEV 475	D	TDZE 471
-----------------	----------	-----------------



- MIRL Rws 6-24
- HIRL Rws 15-33
- REIL Rws 15 and 33
- REIL Rws 6 and 24



CATEGORY	A	B	C	D
LPV DA	810-1 339 (400-1)			NA
LNAV/VNAV DA	771-7/8 300 (300-7/8)			NA
LNAV MDA	840-1 369 (400-1)			NA
CIRCLING	920-1 445 (500-1)	940-1 465 (500-1)	960-1 1/2 485 (500-1 1/2)	NA