

FORT SILL, OKLAHOMA

# RNAV (GPS) RWY 18

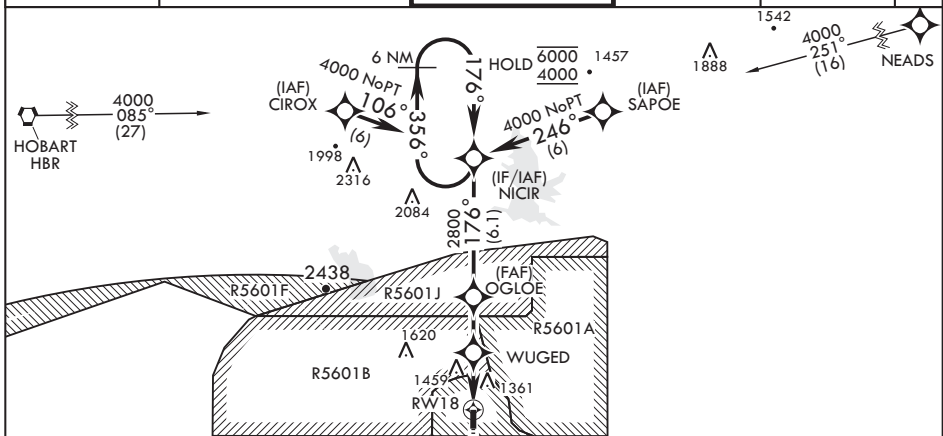
APCH CRS	Rwy Idg	5002
176°	TDZE	1188
	Arpt Elev	1188

-(USA)

HENRY POST AAF (KFSI)

RNP APCH MISSED APPROACH: Climb to 3500 direct to FESAD and hold.

ATIS	FORT SILL APP CON/DEP CON	TOWER*	POST GND CON	CLNC DEL	ASR
135.425 354.025	120.55 322.4	124.95 (CTAF) 0* 229.4	121.7 279.575	121.7 279.575	

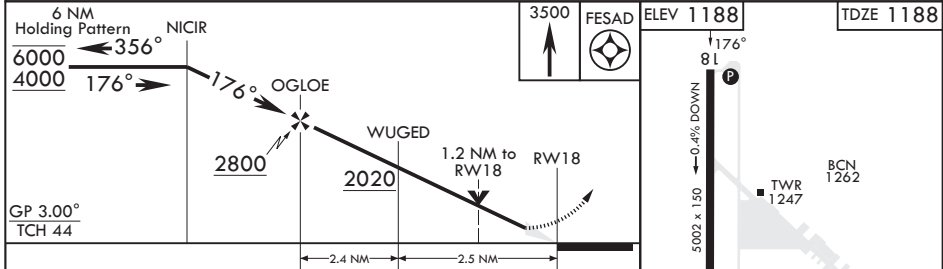
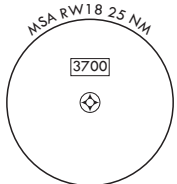
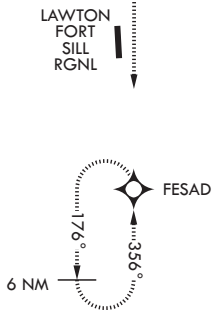


Procedure NA for arrivals at NEADS on V77 Northbound.

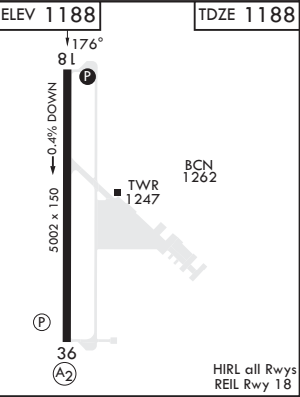
When local altimeter setting not received, use Lawton-Fort Sill RGNL altimeter setting.

For uncompensated Baro-VNAV systems, Procedure NA below -17°C or above 54°C.

Procedure NA for arrival on HBR VORTAC Airway Radials 354 CW 175.



CATEGORY	A	B	C	D
LNAV/VNAV DA	1673-1 $\frac{3}{8}$		485 (500-1%)	
LNAV MDA	1600-1 412 (500-1)	1600-1 $\frac{1}{8}$ 412 (500-1%)	1600-1 $\frac{1}{8}$ 412 (500-1%)	1600-1 $\frac{1}{8}$ 412 (500-1%)
CIRCLING	1680-1 492 (500-1)	1760-1 572 (600-1)	1820-1 $\frac{3}{8}$ 632 (700-1%)	1920-2 $\frac{1}{4}$ 732 (800-2%)



FORT SILL, OKLAHOMA Amdt 2 10AUG23

34°39'N - 98°24'W

HENRY POST AAF (KFSI)

# RNAV (GPS) RWY 18

SC-1, 22 FEB 2024 to 21 MAR 2024

SC-1, 22 FEB 2024 to 21 MAR 2024

FORT SILL, OKLAHOMA

# RNAV (GPS) RWY 36

HENRY POST AAF (KFSI)

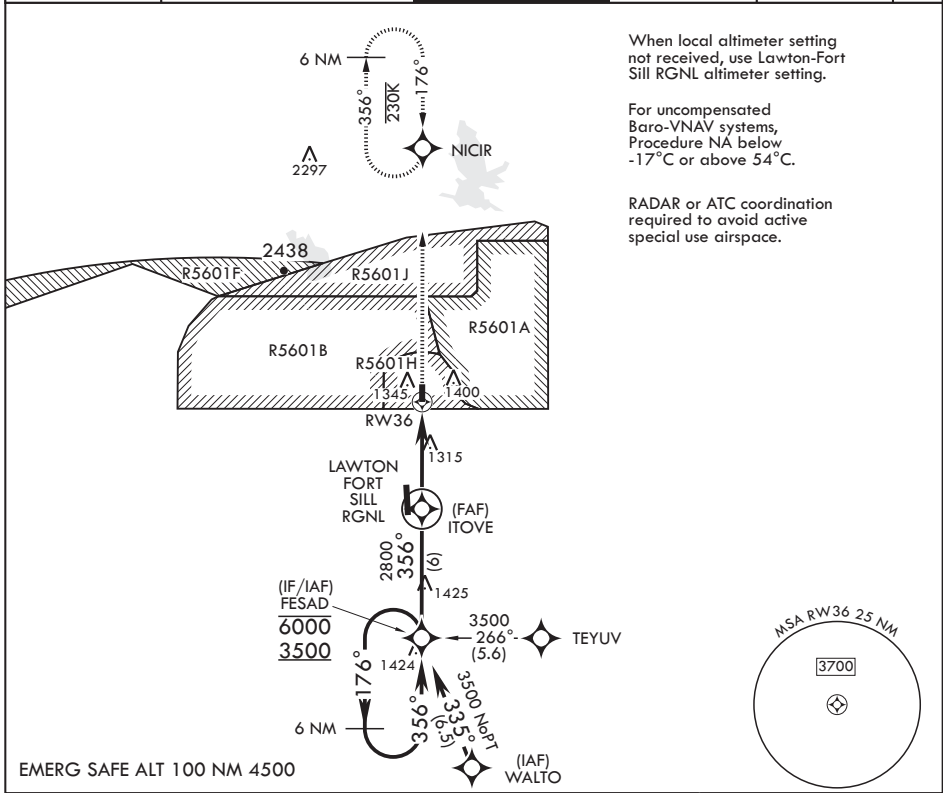
APCH CRS <b>356°</b>	Rwy Idg TDZE Arpt Elev	<b>5002</b> <b>1187</b> <b>1188</b>
-------------------------	------------------------------	---

-(USA)

**▼** \* When ALS inop, increase RVR to 45, vis to 7/8 mile.  
 \*\* When ALS inop, increase CAT AB RVR to 55, vis to 1 mile; CAT CD vis to 1 3/8 miles.

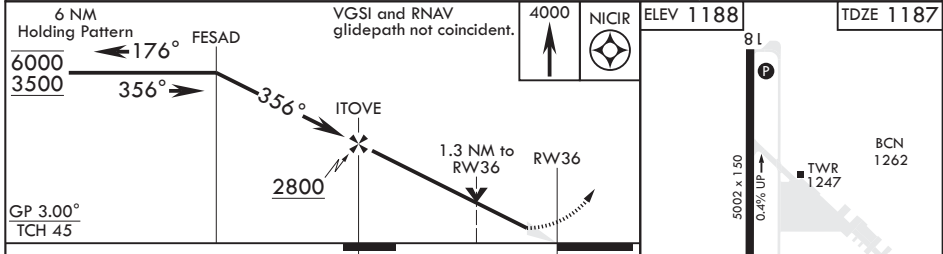
**SALS** MISSED APPROACH: Climb to 4000 direct NICIR and hold. Radar required for MA to avoid active airspace.

ATIS <b>135.425 354.025</b>	FORT SILL APP CON/DEP CON <b>120.55 322.4</b>	TOWER* <b>124.95</b> (CTAF) <b>0 229.4</b>	POST GND CON <b>121.7 279.575</b>	CLNC DEL <b>121.7 279.575</b>	ASR
--------------------------------	--	---	--------------------------------------	----------------------------------	-----

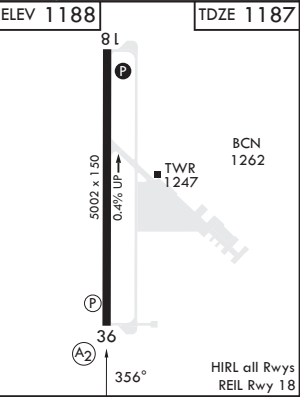


SC-1, 22 FEB 2024 to 21 MAR 2024

SC-1, 22 FEB 2024 to 21 MAR 2024



CATEGORY	A	B	C	D
LNAV/VNAV DA*	1490/40		303	(400-¾)
LNAV MDA**	1640/40	453 (500-¾)	1640/55	453 (500-1)
CIRCLING	1680-1 492 (500-1)	1760-1 572 (600-1)	1820-1¼ 632 (700-1¼)	1920-2¼ 732 (800-2¼)



FORT SILL, OKLAHOMA  
Amdt 3 30NOV23

34°39'N - 98°24'W

HENRY POST AAF (KFSI)

# RNAV (GPS) RWY 36

# VOR RWY 18

[USA]

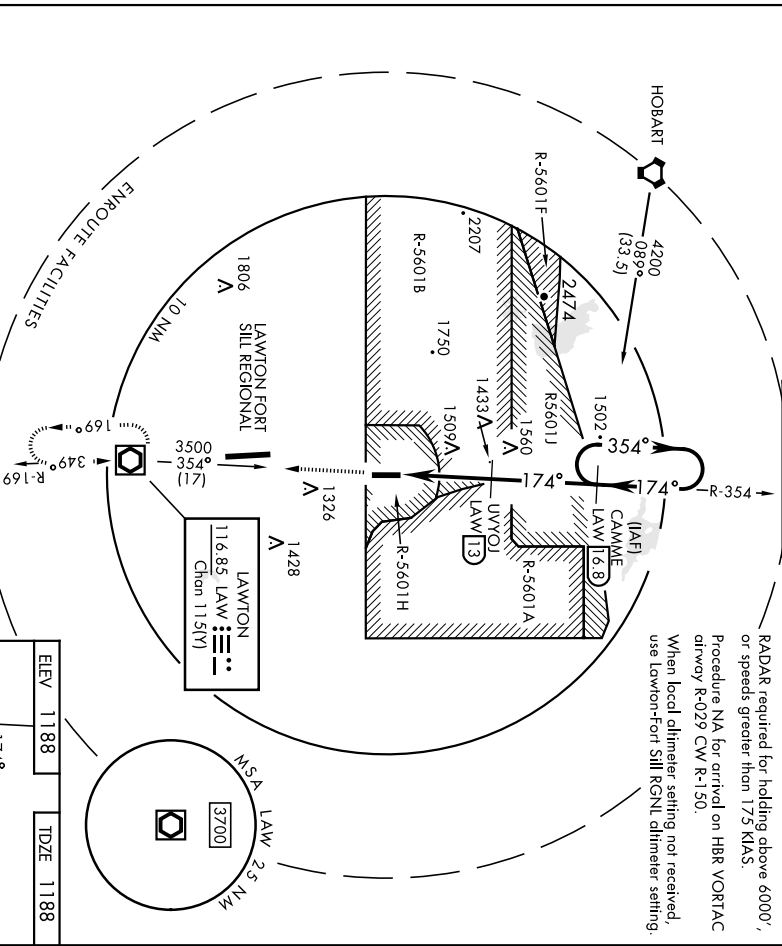
HENRY POST AAF (KFSI)

VOR/DME LAW	APCH CRS	Req'd Idg
<b>116.95</b> Chn <b>1151V</b>	<b>174°</b>	<b>1188</b> TDZE Appt Elev <b>1188</b>

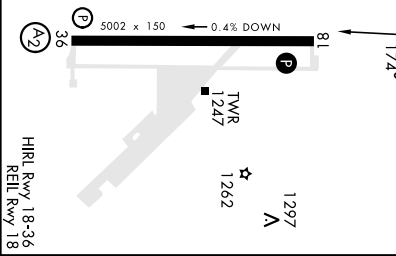
DME required			MISSED APPROACH: Climb straight ahead to 3000 direct to LAW VOR/DME and hold.	
--------------	--	--	---	--

ATIS	FORT SILL APP CON	POST TOWER*(CTAF)	GND CON	CLNC DEL	ASR
<b>135.425 354.025</b>	<b>120.55 322.4</b>	<b>124.95</b> <b>229.4</b>	<b>121.7 279.575</b>	<b>121.7 279.575</b>	

PADAR required for holding above 6000', or speeds greater than 175 KIAS.  
 Procedure NA for arrival on HBR VORTAC driveway R-029 CW R-150.  
 When local diameter setting not received, use Lawton-Fort Sill RGNL diameter setting.



3000	LAW	UVOJ LAW 13	CAMME LAW 68	One minute holding pattern	6000
		174°	354°	174°	3500
		3.4 NM	3.8 NM		
CATEGORY	A	B	C	D	
S-18	1760-1	572 (600-1)	1760-1½ 572 (600-1½)	1820-1¾ 1920-2¼	
CIRCLING	1760-1	572 (600-1)	632 (700-1¾)	732 (800-2¼)	



FORT SILL, OKLAHOMA  
 Andt 2 10AUG23  
 HENRY POST AAF (KFSI)  
**VOR RWY 18**

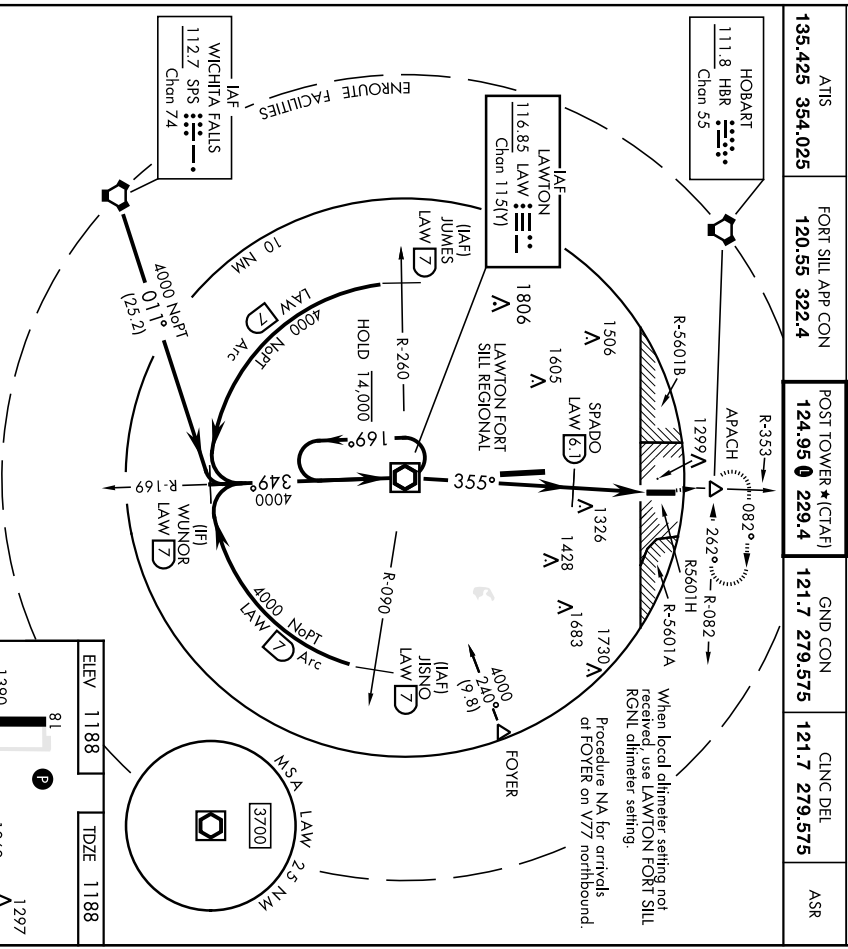
# VOR RWY 36

VOR/DME LAW <b>116.95</b> Chon 115(Y)	APCH CRS <b>355°</b>	Req'd Idg TDZE Appt Elev	<b>5002</b> <b>1188</b> <b>1188</b>
---	-------------------------	--------------------------------	---

[USA]

HENRY POST AAF (KFSI)

* When AUS Inop, increase CAT CD vis to 1 1/8 miles. DME required	AUIS <b>135.425 354.025</b>	FORT SILL APP CON <b>120.55 322.4</b>	POST TOWER *(CTAF) <b>124.95 229.4</b>	GND CON <b>121.7 279.575</b>	CLNC DEL <b>121.7 279.575</b>	ASR
	SALS (A2)	MISSED APPROACH: Climb to 4000 on LAW VOR/DME R-353 to APACH INT/LAW 20.9 DME and hold.				



# VOR RWY 36

HENRY POST AAF (KFSI)