

WAAS CH 50318 W13A	APP CRS 131°	Rwy Idg TDZE 14 Apt Elev 16	5152
--	------------------------	---	-------------

RNAV (GPS) RWY 13

FERNANDINA BEACH MUNI (FHB)

RNP APCH.

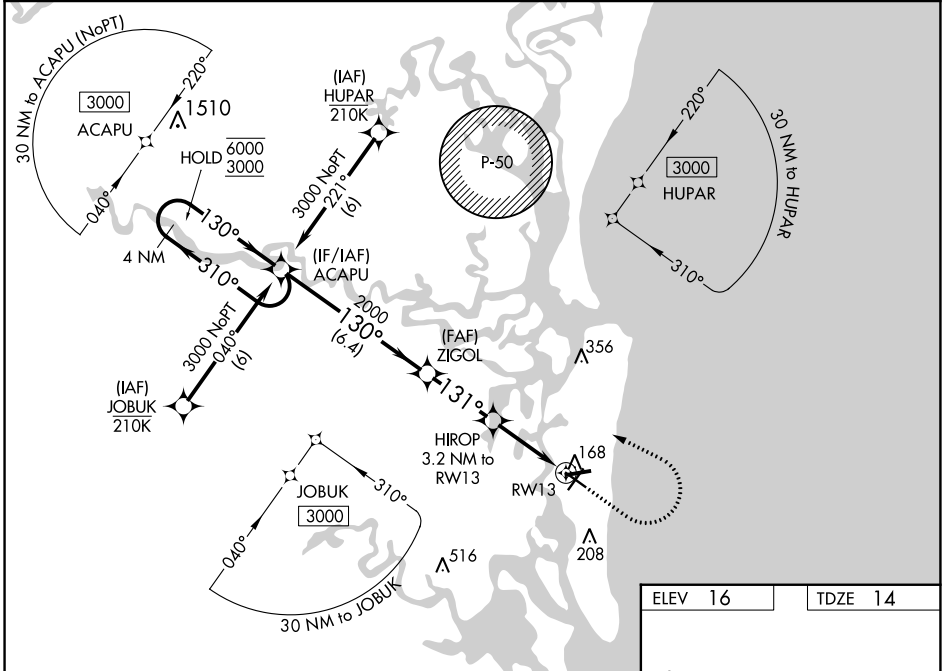
⚠ Circling Rwy 9, 22, 27 NA at night. Rwy 13 helicopter visibility reduction below 3/4 SM NA. For uncompensated Baro-VNAV systems, LNAV/VNAV NA below -15°C or above 54°C.

MISSED APPROACH: Climb to 500 then climbing left turn to 3000 direct ACAPU and hold, continue climb-in-hold to 3000.

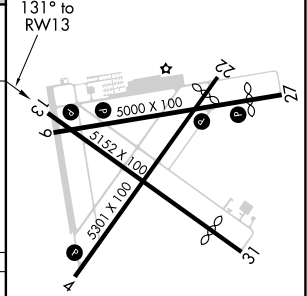
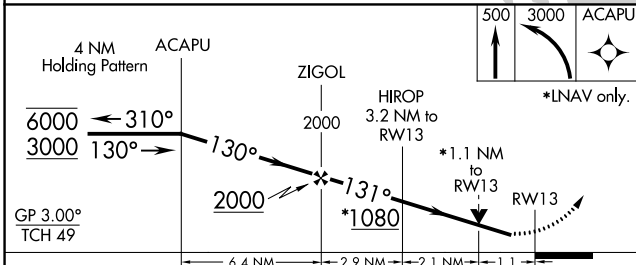
AWOS-3
118.075

JACKSONVILLE APP CON
127.0 292.15

UNICOM
122.7 (CTAF) 0



ELEV 16	TDZE 14
---------	---------



CATEGORY	A	B	C	D
LPV DA		288-1	274 (300-1)	
LNAV/VNAV DA		443-1 3/8	429 (500-1 3/8)	
LNAV MDA	420-1	406 (500-1)	420-1 1/8	406 (500-1 1/8)
CIRCLING	480-1	464 (500-1)	580-1 1/2	580-2
			564 (600-1 1/2)	564 (600-2)

REIL Rwy 4 and 13 0
MIRL Rwy 4-22, 9-27 and 13-31 0

SE-3, 22 FEB 2024 to 21 MAR 2024

SE-3, 22 FEB 2024 to 21 MAR 2024

APP CRS	Rwy Idg	4861
221°	TDZE	16
	Apt Elev	16

RNAV (GPS) RWY 22

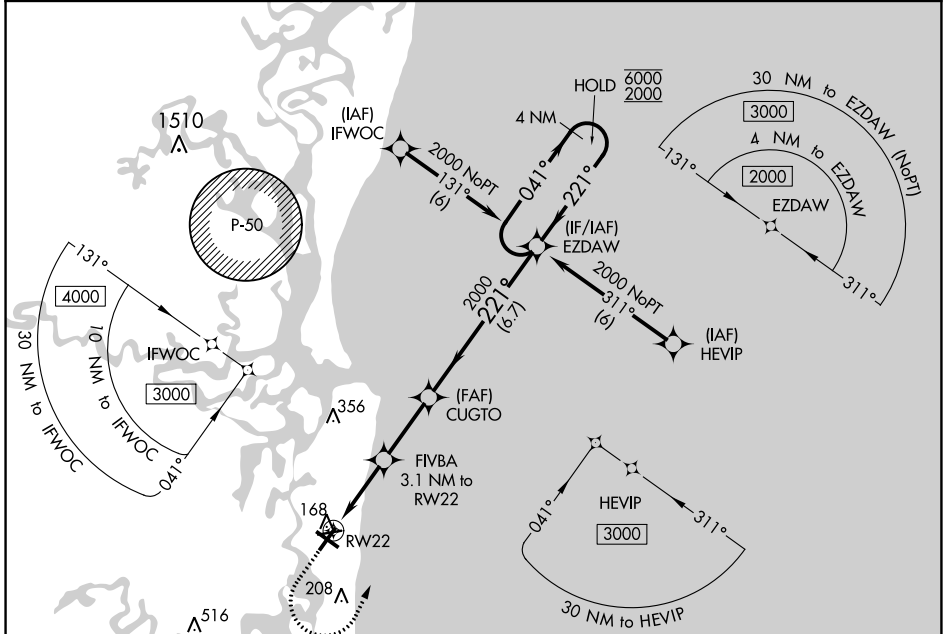
FERNANDINA BEACH MUNI (FHB)

RNP APCH.

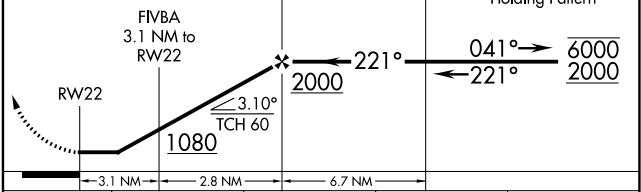
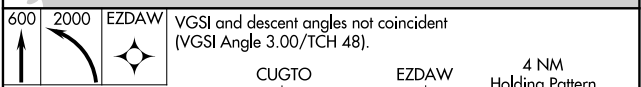
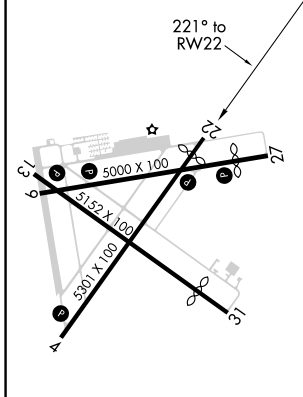
▼ Circling Rwy 9, 22, 27 NA at night. Rwy 22 helicopter visibility reduction below 1 SM NA. Straight-in Rwy 22 NA at night.

MISSED APPROACH: Climb to 600 then climbing left turn to 2000 direct EZDAW and hold.

AWOS-3 118.075	JACKSONVILLE APP CON 127.0 292.15	UNICOM 122.7 (CTAF) 0
--------------------------	---	---------------------------------



ELEV 16	TDZE 16
---------	---------



CATEGORY	A	B	C	D
LNAV MDA	420-1	404 (500-1)	420-1 1/8	404 (500-1 1/8)
CIRCLING	480-1	464 (500-1)	580-1 1/2	580-2
			564 (600-1 1/2)	564 (600-2)

FERNANDINA BEACH, FLORIDA
Amdt 1E 03DEC20

30°37'N-81°28'W

FERNANDINA BEACH MUNI (FHB)
RNAV (GPS) RWY 22

SE-3, 22 FEB 2024 to 21 MAR 2024

SE-3, 22 FEB 2024 to 21 MAR 2024

WAAS CH 90343 W04A	APP CRS 041°	Rwy Idg TDZE 15 Apt Elev 16	5301
--	------------------------	---	-------------

RNAV (GPS) RWY 4

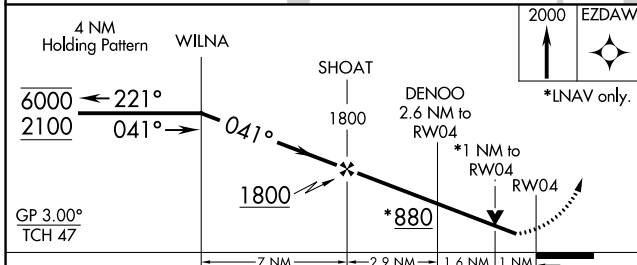
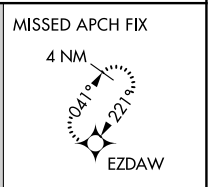
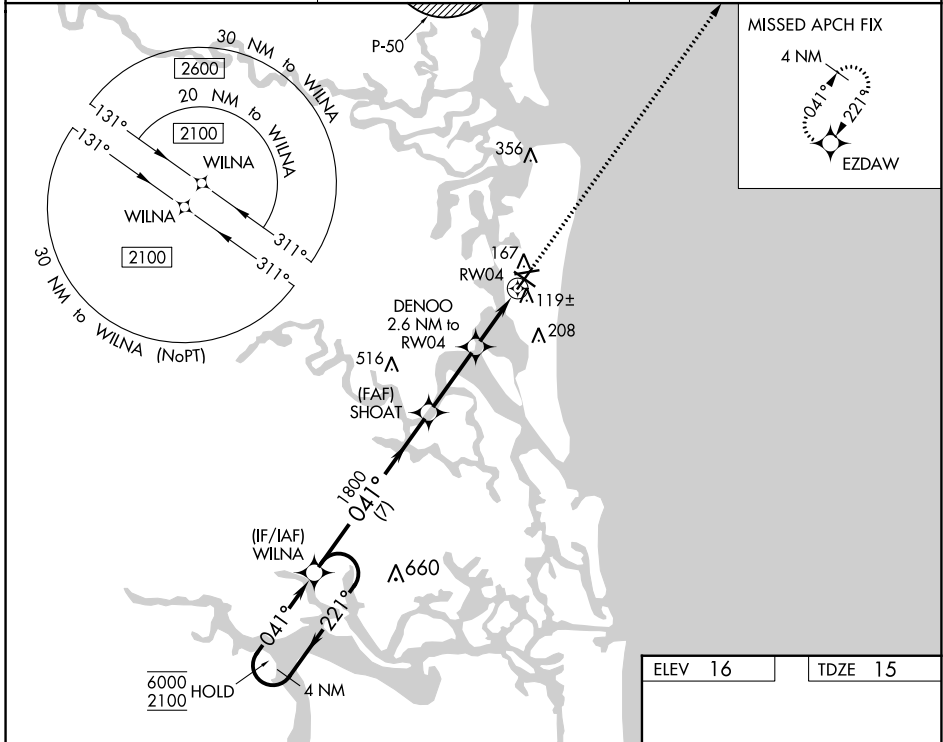
FERNANDINA BEACH MUNI (FHB)

RNP APCH - GPS.

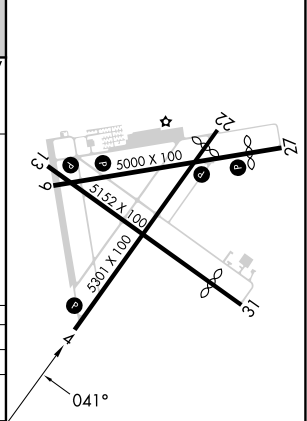
▼ Circling Rwy 9, 22, 27 NA at night. Rwy 4 helicopter visibility reduction below 3/4 SM NA.
▲ For uncompensated Baro-VNAV systems, LNAV/VNAV NA below -15°C or above 54°C.

MISSED APPROACH: Climb to 2000 direct EZDAW and hold.

AWOS-3 118.075	JACKSONVILLE APP CON 127.0 292.15	UNICOM 122.7 (CTAF) 0
--------------------------	---	---------------------------------



ELEV 16	TDZE 15
---------	---------



CATEGORY	A	B	C	D
LPV DA		265-7/8	250 (300-7/8)	
LNAV/VNAV DA		280-7/8	265 (300-7/8)	
LNAV MDA		380-1	365 (400-1)	
C CIRCLING	480-1	464 (500-1)	580-1 1/2 564 (600-1 1/2)	580-2 564 (600-2)

REIL Rwy 4 and 13 **0**
 MIRL Rwy 4-22, 9-27 and 13-31 **0**

SE-3, 22 FEB 2024 to 21 MAR 2024

SE-3, 22 FEB 2024 to 21 MAR 2024