

DAYTON, OHIO

23278

# ILS or LOC RWY 23R

AL-108 [USAF]

WRIGHT-PATTERSON AFB (KFFO)

LOC I-FFO <b>109.7</b>	APCH CRS <b>233°</b>	Rwy Idg THRE <b>823</b>	Appl Elev <b>823</b>
---------------------------	-------------------------	-------------------------------	-------------------------

▼ \*\*When ALS inop, increase RVR to 40 and vis to ¼ mile.  
\*\*When ALS inop, increase CAT AB RVR to 55 and vis to 1 mile.  
CAT CDE vis to 1½ miles.

ALSF-1  
[A1]

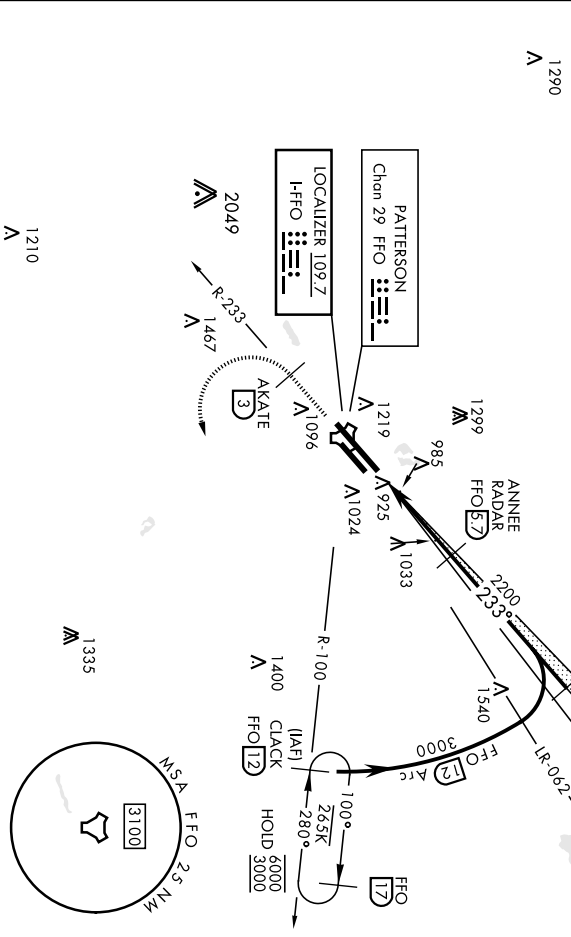
† MISSED APPROACH: Climb via FFO R-233 to 2000, or 3 DME turn left direct CLACK to 3000 and hold.

ATIS <b>124.475 269.9</b>	COLUMBUS APP CON <b>118.85 269.275</b>	PATTERSON TOWER <b>126.9 281.45</b>	GND CON <b>121.8 335.8</b>
------------------------------	---	--	-------------------------------

\*\*\* When Rwy 23R VGS1 inop, circling to Rwy 23R NA at night.

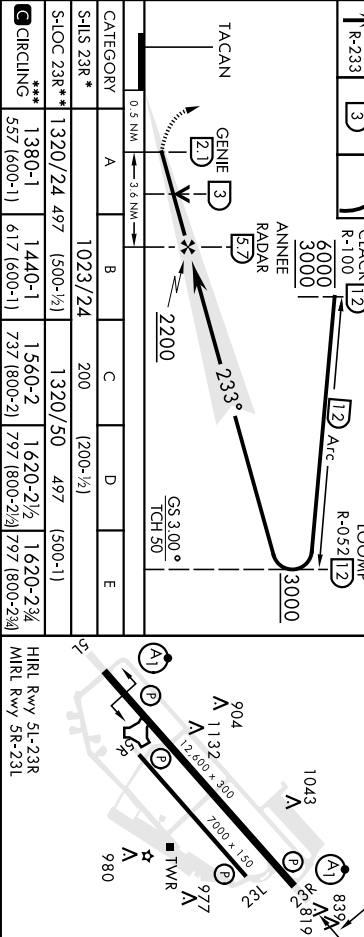
† Missed approach requires use of RNAV or ATC radar monitoring.

Autocoupled approach NA below 1458' MSL.



2000 FFO R-233	AKKATE FFO (3)	3000	CLACK (I2)	6000 R-100	3000	LOOKMP (I2)	3000
----------------	----------------	------	------------	------------	------	-------------	------

VGS1 and ILS glidepath not coincident (VGS1 Angle 3.00/TCH 53).



CATEGORY	A	B	C	D	E
S-ILS 23R*	1023/24 200 (200-½)				
S-LOC 23R**	1320/24 497 (500-½)				
*** CIRCLING	1380-1 557 (600-1)	1440-1 617 (600-1)	1560-2 737 (800-2)	1620-2½ 797 (800-2½)	1620-2¾ 797 (800-2¾)

HRL Rwy 5L-23R	904	1043	839	977	122
MRL Rwy 5R-23L	1132	1260	819	977	122

DAYTON, OHIO  
Amdt 7 10AUG23  
39° 50' N - 84° 03' W  
WRIGHT-PATTERSON AFB (KFFO)  
ILS or LOC RWY 23R



DAYTON, OHIO

# RNAV (GPS) RWY 23L

23278

APCH CRS	Rwy Idg	7000
233°	TDZE	818
	Arprt Elev	823

AL-108 (USAF)

WRIGHT PATTERSON AFB (KFFO)

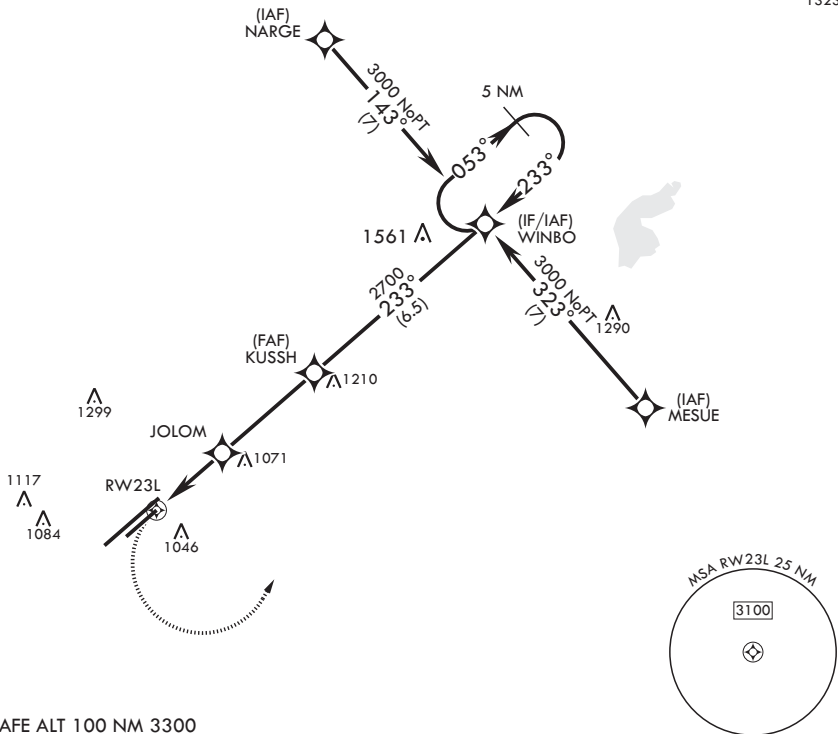
**V** \* When Rwy 23R VGSI inop, circling to Rwy 23R NA at night. MISSED APPROACH: Turn left climb to 3000 direct WINBO WPT and hold.

ATIS <b>124.475 269.9</b>	COLUMBUS APP CON/DEP CON <b>118.85 269.275</b>	PATTERSON TOWER <b>126.9 281.45</b>	GND CON <b>121.8 335.8</b>
------------------------------	---	--	-------------------------------

DME/DME RNP -0.3 NA

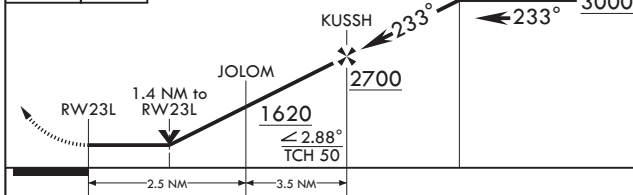
LNAV Visibility Reduction by Helicopters NA.

1323



EMERG SAFE ALT 100 NM 3300

<b>3000</b>	<b>WINBO</b>	VGSI and descent angle not coincident.	<b>5 NM</b>	<b>Holding Pattern</b>	<b>ELEV 823</b>	<b>TDZE 818</b>
-------------	--------------	--	-------------	------------------------	-----------------	-----------------



CATEGORY	A	B	C	D
LNAV MDA	1320-1 502 (500-1)	1320-1 $\frac{1}{8}$ 502 (500-1 $\frac{1}{8}$ )	1560-2 737 (800-2)	1620-2 $\frac{1}{2}$ 797 (800-2 $\frac{1}{2}$ )
<b>C</b> CIRCLING*	1380-1 557 (600-1)	1440-1 617 (700-1)		

HIRL Rwy 5L-23R  
MIRL Rwy 5R-23L

DAYTON, OHIO

39°50'N - 84°03'W

WRIGHT PATTERSON AFB (KFFO)

Amdt 6 29MAR18

# RNAV (GPS) RWY 23L

EC-2, 22 FEB 2024 to 21 MAR 2024

EC-2, 22 FEB 2024 to 21 MAR 2024

DAYTON, OHIO

# RNAV (GPS) RWY 23R

23278

APCH CRS	Rwy Idg	12,600
233°	TDZE	823
	Arprt Elev	823

AL-108 (USAF)

WRIGHT PATTERSON AFB (KFFO)

**⚠** \* When ALS inop, increase CAT AB RVR to 55, vis to 1 mile; CAT CD vis to 1 3/8 miles.  
 \*\* When Rwy 23R VGSI inop, circling to Rwy 23R NA at night.

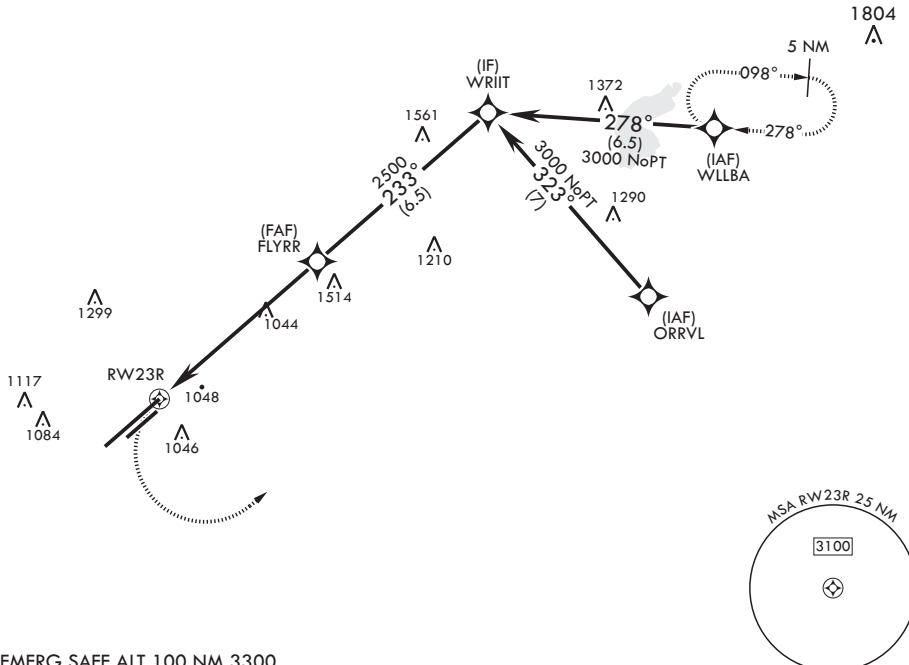


MISSED APPROACH: Turn left climb to 3000 direct WLLBA waypoint and hold.

ATIS 124.475 269.9	COLUMBUS APP CON/DEP CON 118.85 269.275	PATTERSON TOWER 126.9 281.45	GND CON 121.8 335.8
-----------------------	--	---------------------------------	------------------------

DME/DME RNP-0.3 NA

1323



EMERG SAFE ALT 100 NM 3300

WLLBA	VGSI and descent angles not coincident. (VGSI angle 3.00 TCH 53)	WRIIT	ELEV 823	TDZE 823
1.4 NM to RWY 23R	2500	3000	233°	233°
≤ 2.55° TCH 53	6 NM			
CATEGORY	A	B	C	D
LNAV MDA*	1320/24 497 (500-½)		1320/50 497 (500-1)	
CIRCLING**	1380-1 557 (600-1)	1440-1 617 (700-1)	1560-2 737 (800-2)	1620-2½ 797 (800-2½)

DAYTON, OHIO

39°50'N - 84°03'W

WRIGHT PATTERSON AFB (KFFO)

Amdt 5 13OCT16

# RNAV (GPS) RWY 23R

EC-2, 22 FEB 2024 to 21 MAR 2024

EC-2, 22 FEB 2024 to 21 MAR 2024

DAYTON, OHIO

# RNAV (GPS) RWY 5L

APCH CRS	Rwy Idg	12,600
053°	TDZE	803
	Arprt Elev	823

AL-108 (USAF)

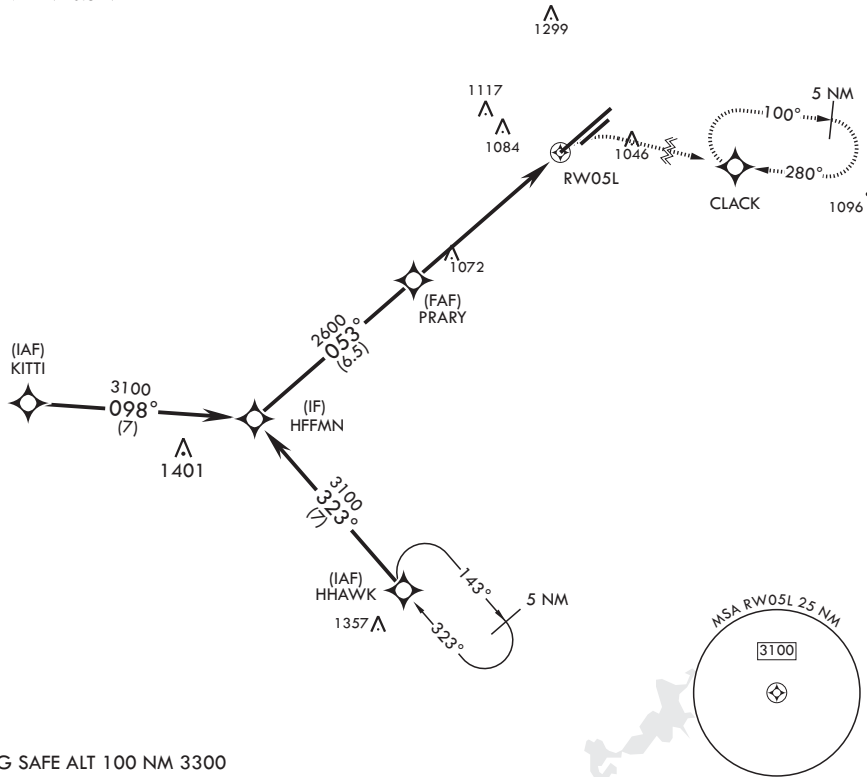
WRIGHT PATTERSON AFB (KFFO)

**▼** \* When ALS inop increase CAT AB RVR to 55, vis to 1 mile; CAT CD vis to 1 5/8 miles.  
 \*\* When Rwy 23R VGSI inop, circling to Rwy 23R NA at night.

ALSF-1 MISSED APPROACH: Turn right climb to 3100 direct CLACK WPT and hold.

ATIS 124.475 269.9	COLUMBUS APP CON/DEP CON 118.85 269.275	PATTERSON TOWER 126.9 281.45	GND CON 121.8 335.8
-----------------------	--	---------------------------------	------------------------

DME/DME RNP-0.3 NA



EMERG SAFE ALT 100 NM 3300

HFFMN 3100	VGSI and descent angles not coincident (VGSI angle 3.00/TCH 51).	3100	CLACK	ELEV 823	TDZE 803
CATEGORY	A	B	C	D	
LNAV MDA*	1380/24	577 (600-½)	1380-1¼	577 (600-1¼)	
CIRCLING**	1380-1 557 (600-1)	1440-1 617 (700-1)	1560-2 737 (800-2)	1620-2½ 797 (800-2½)	HIRL Rwy 5L-23R MIRL Rwy 5R-23L

DAYTON, OHIO

39°50'N - 84°03'W

WRIGHT PATTERSON AFB (KFFO)

Amdt 3 13OCT16

# RNAV (GPS) RWY 5L

EC-2, 22 FEB 2024 to 21 MAR 2024

EC-2, 22 FEB 2024 to 21 MAR 2024

DAYTON, OHIO

23278

# RNAV (GPS) RWY 5R

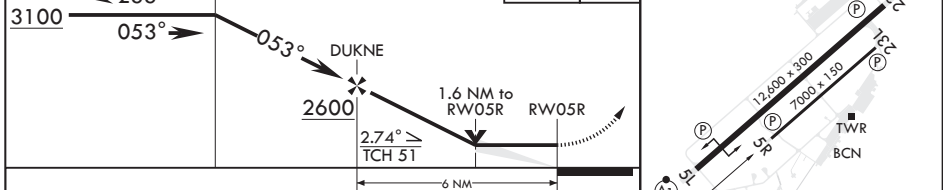
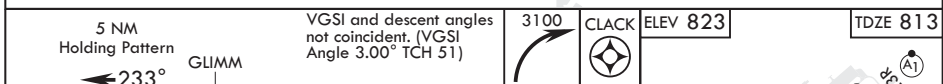
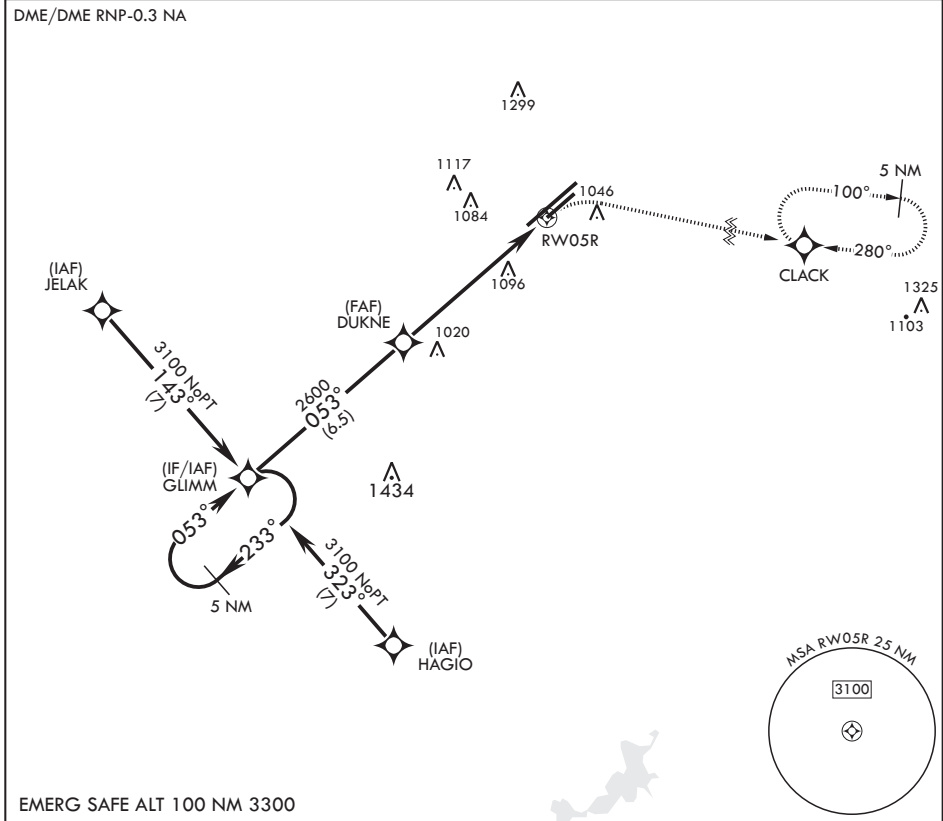
APCH CRS <b>053°</b>	Rwy Idg <b>7000</b>
	TDZE <b>813</b>
	Arprt Elev <b>823</b>

AL-108 (USAF)

WRIGHT PATTERSON AFB (KFFO)

**▽** \* When Rwy 23R VGSi inop, circling to Rwy 23R NA at night. MISSED APPROACH: Turn right climb to 3100 direct CLACK WPT and hold.

ATIS <b>124.475 269.9</b>	COLUMBUS APP CON/DEP CON <b>118.85 269.275</b>	PATTERSON TOWER <b>126.9 281.45</b>	GND CON <b>121.8 335.8</b>
------------------------------	---	--	-------------------------------



CATEGORY	A	B	C	D
LNAV MDA	1380-1 567 (600-1)	1380-1 <sup>5</sup> / <sub>8</sub> 567 (600-1 <sup>5</sup> / <sub>8</sub> )	1560-2 737 (800-2)	1620-2 <sup>1</sup> / <sub>2</sub> 797 (800-2 <sup>1</sup> / <sub>2</sub> )
<b>C</b> CIRCLING*	1380-1 557 (600-1)	1440-1 617 (700-1)	1560-2 737 (800-2)	1620-2 <sup>1</sup> / <sub>2</sub> 797 (800-2 <sup>1</sup> / <sub>2</sub> )

HIRL Rwy 5L-23R  
MIRL Rwy 5R-23L

DAYTON, OHIO 39°50'N - 84°03'W WRIGHT PATTERSON AFB (KFFO)

Amdt 4 13OCT16

# RNAV (GPS) RWY 5R

EC-2, 22 FEB 2024 to 21 MAR 2024

EC-2, 22 FEB 2024 to 21 MAR 2024

# TACAN RWY 23L

TACAN FFO Chon 29	APCH CRS 236°	Rwy/Ldg TDZE Appt Elev	7000 818 823
----------------------	------------------	------------------------------	--------------------

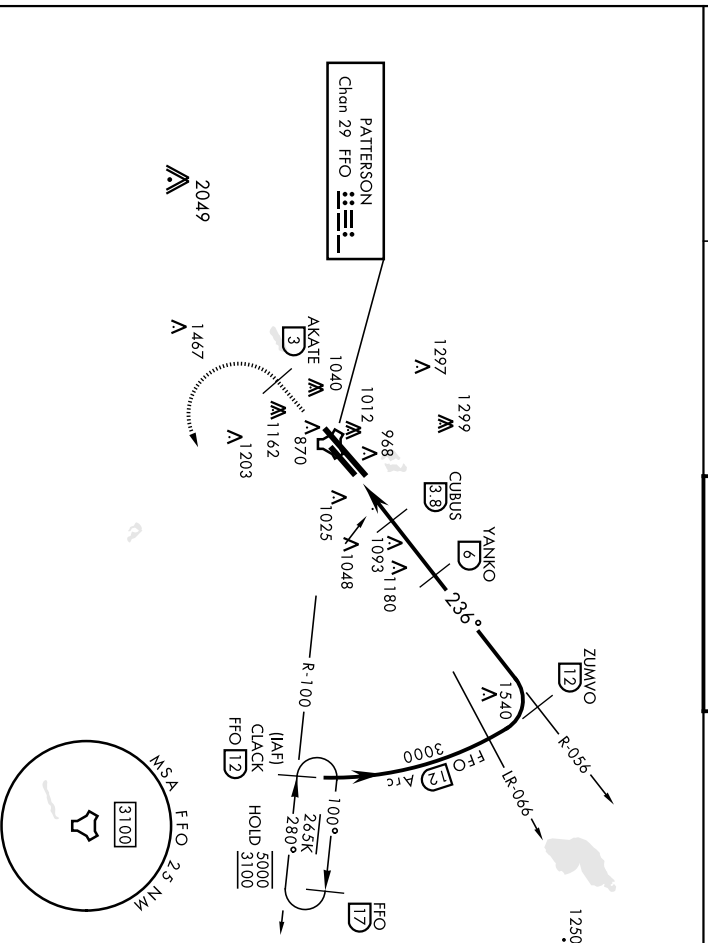
AL-108 [USAF]

WRIGHT-PATTERSON AFB (KFFO)

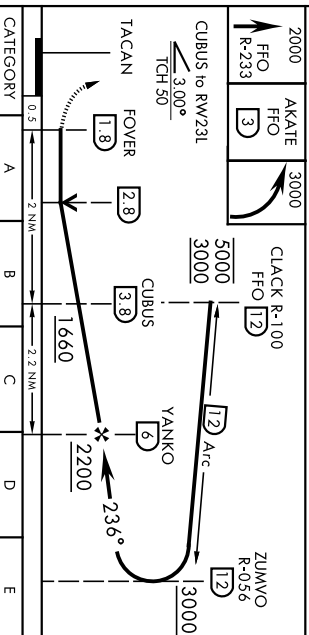
▼ \* When Rwy 23R VGSJ Inop, circling to Rwy 23R NA or night.

MISSED APPROACH: Climb to 2000 via FFO R-233, at 3 DME turn left direct CLACK climbing to 3000 and hold.

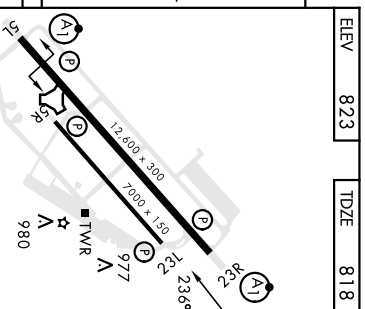
ATIS 124.475 269.9	COUMBUS APP CON 118.85 269.275	PATTERSON TOWER 126.9 281.45	GND CON 121.8 335.8
-----------------------	-----------------------------------	---------------------------------	------------------------



EMERG SAFE ALT 100 NM 3700



CATEGORY	A		B		C		D		E	
	1340-1	1340-1	1340-1 1/2	1340-1 1/2	572	572	1340-1 3/4	1340-1 3/4	1620-2 3/4	1620-2 3/4
S-23L	572 (600-1)	572 (600-1)	572 (600-1 1/2)	572 (600-1 1/2)	572	572	1340-1 3/4	1340-1 3/4	1620-2 3/4	1620-2 3/4
◻ CIRCLING *	1380-1 557 (600-1)	1400-1 577 (600-1)	1420-1 1/2 597 (600-1 1/2)	1420-1 1/2 597 (600-1 1/2)	1460-2	1460-2	1620-2 3/4	1620-2 3/4	1797 (800-2 3/4)	1797 (800-2 3/4)



ELEV	823	TDZE	818
------	-----	------	-----

# TACAN RWY 23R

TACAN FFO	APCH CRS	Rwy Idg	<b>12,600</b>
Chon 29	<b>230°</b>	THR Elev	<b>823</b>
		Appl Elev	<b>823</b>

AL-108 [USAF]

WRIGHT-PATTERSON AFB (KFFO)

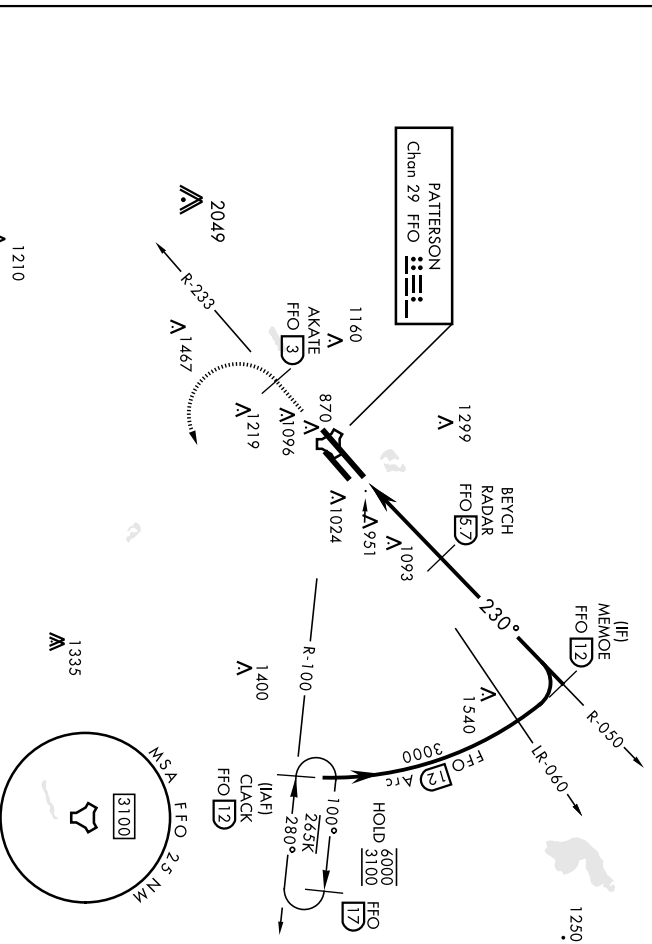
▲ \*\* When AIS Inop, increase CAT AB RVR to 55 and vis to 1 mile, CAT CDE vis to 1½ miles.

AISF-1

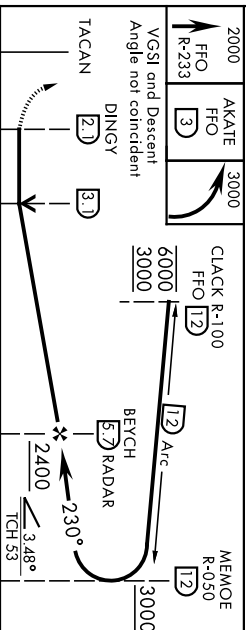
† MISSED APPROACH: Climb to 2000 via FFO R-233, at 3 DME turn left direct CLACK climbing to 3000 and hold.

ATIS	COLUMBUS APP CON	PATTERSON TOWER	GND CON
<b>124,475 269,9</b>	<b>118,85 269,275</b>	<b>126,9 281,45</b>	<b>121,8 335,8</b>

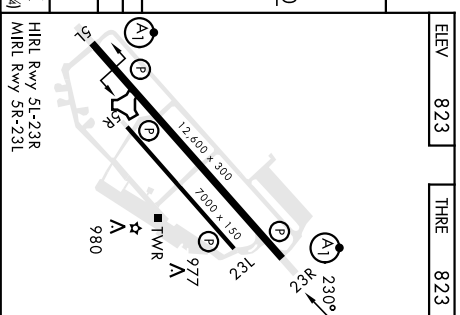
\*\* When Rwy 23R VGSi Inop, circling to Rwy 23R NA or night.  
† Missed approach requires use of RNAV or ATC radar monitoring.



EMERG SAFE ALT 100 NM 3700	ELEV	823	THRE	823
----------------------------	------	-----	------	-----



CATEGORY	A	B	C	D	E
S-23R *	1360/24 537 (600-½)	1440-1 617 (700-1)	1560-2 737 (800-2)	1620-2½ 797 (800-2½)	1620-2¾ 797 (800-2¾)
QIRCLING **	1380-1 557 (600-1)	1440-1 617 (700-1)	1560-2 737 (800-2)	1620-2½ 797 (800-2½)	1620-2¾ 797 (800-2¾)



DAYTON, OHIO  
Amdt 6 30APR15  
39° 50' N - 84° 03' W  
WRIGHT-PATTERSON AFB (KFFO)  
**TACAN RWY 23R**



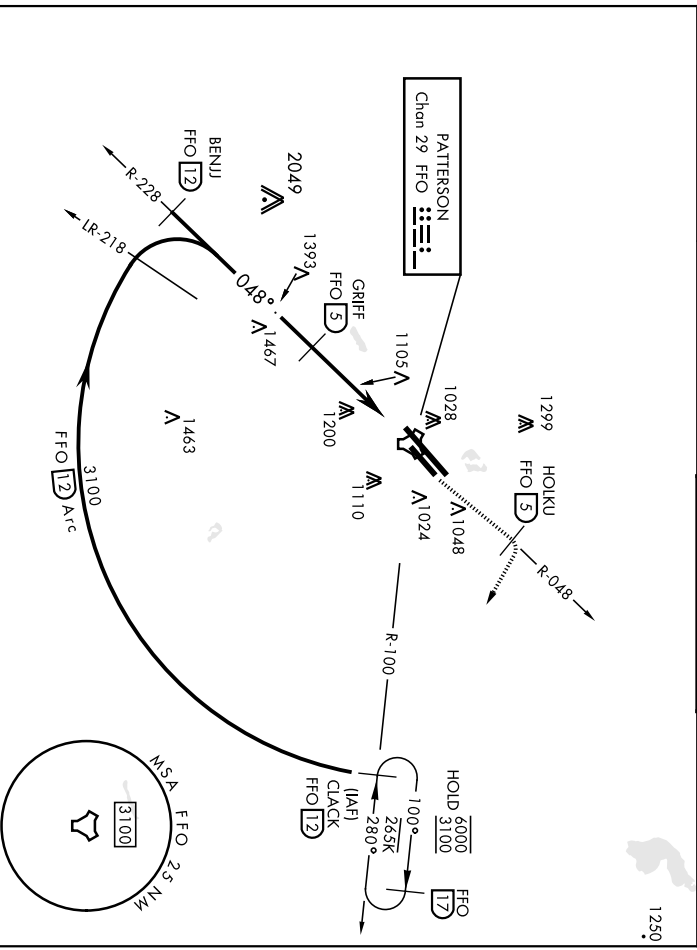


# TACAN RWY 5R

TACAN FFO Chan 29	APCH CRS 048°	Rwy/Idg THRE Appt Elev 823	AL-108 [USAF]	WRIGHT-PATTERSON AFB (KFFO)
ANIS 124.475 269.9	COLUMBUS APP CON 118.85 269.275	PATTERSON TOWER 126.9 281.445	GND CON 121.8 335.8	

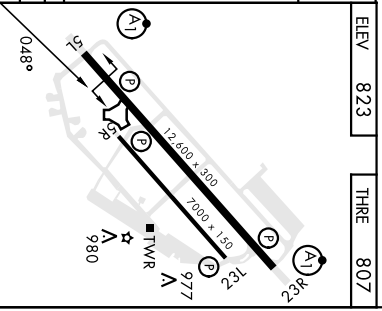
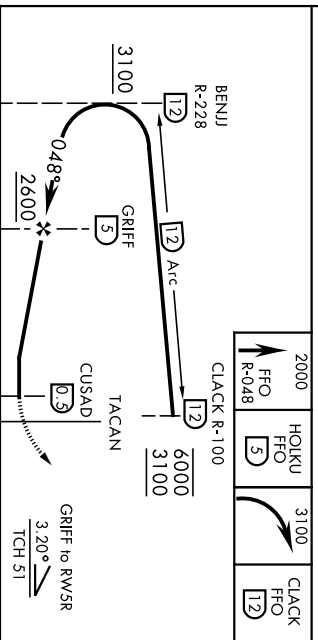
▼ \* When Rwy 23R VGS1 inop, circling to Rwy 23R NA at night.

MISSED APPROACH: Climb to 2000 via FFO R-048 to HOLKU, turn right direct CLACK climbing to 3100 and hold.



EMERG SAFE ALT 100 NM 3700

CATEGORY	A	B	C	D	E
	1500-1	687 (700-1)	1500-2	687 (700-2)	
5-SR	1500-1	687 (700-1)	1560-2	1620-2½	1620-2¾
QRCLING*	1500-1	677 (700-1)	737 (800-2)	797 (800-2½)	797 (800-2¾)



DAYTON, OHIO  
Andl 5 05JAN17  
39° 50' N - 84° 03' W  
WRIGHT-PATTERSON AFB (KFFO)  
TACAN RWY 5R