

LOC/DME I-CFU 108.3 Chan 20	APP CRS 331°	Rwy ldg 5500 TDZE 217 Apt Elev 236
--	------------------------	---

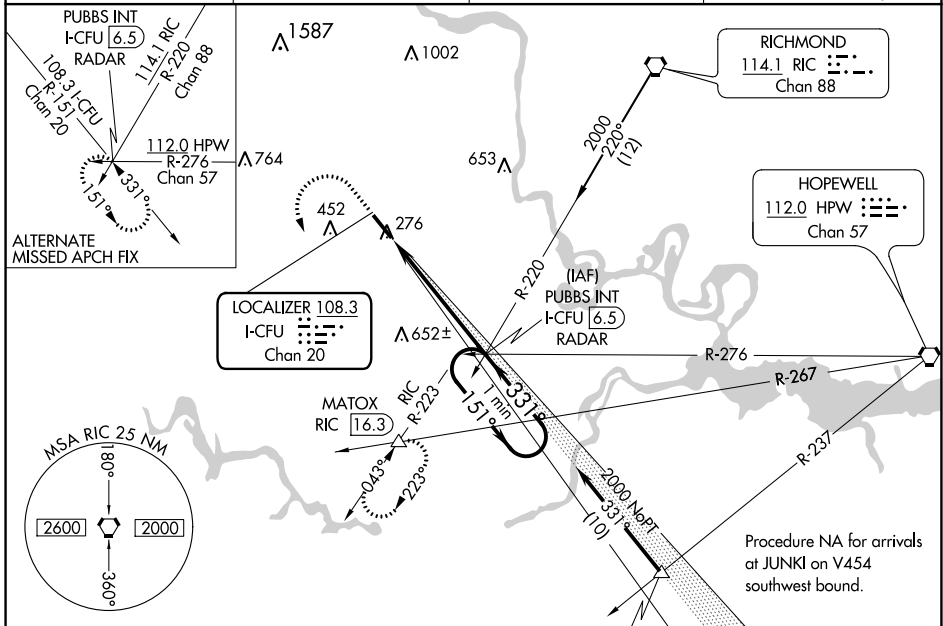
ILS or LOC RWY 33

RICHMOND EXECUTIVE-CHESTERFIELD COUNTY (F'CI)

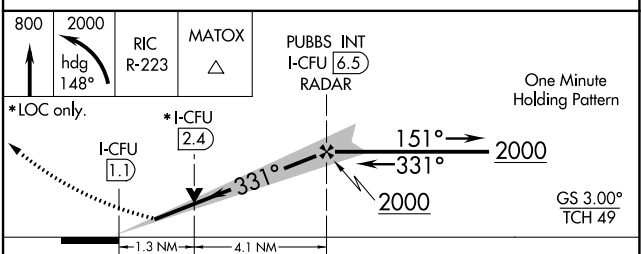
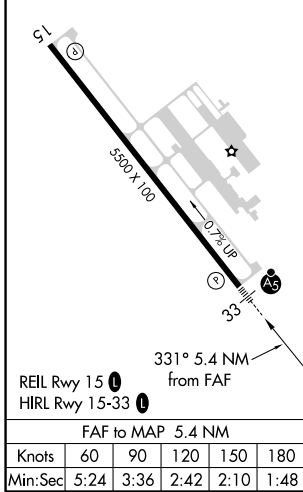
NA When local altimeter setting not received, use Richmond Intl altimeter setting and increase all DA 36 feet and all MDA 40 feet; increase S-LOC 33 Cat C and D visibility $\frac{1}{8}$ mile. VDP NA with Richmond Intl altimeter setting.

MALSR MISSED APPROACH: Climb to 800, then climbing left turn to 2000 via heading 148° and RIC VORTAC R-223 to MATOX INT/RIC 16.3 DME and hold.

AWOS-3PT 128.625	POTOMAC APP CON 126.75 307.2	CLNC DEL 124.6	UNICOM 123.05 (CTAF)
----------------------------	--	--------------------------	--------------------------------



ELEV 236	TDZE 217
----------	----------



CATEGORY	A	B	C	D
S-ILS 33	417- $\frac{1}{2}$ 200 (200- $\frac{1}{2}$)			
S-LOC 33	660- $\frac{1}{2}$	443 (500- $\frac{1}{2}$)	660- $\frac{7}{8}$	443 (500- $\frac{7}{8}$)
CIRCLING	720-1	484 (500-1)	760- $\frac{1}{2}$	800-2 524 (600- $\frac{1}{2}$) 564 (600-2)

ILS or LOC RWY 33

NE-3, 08 OCT 2020 to 05 NOV 2020

NE-3, 08 OCT 2020 to 05 NOV 2020

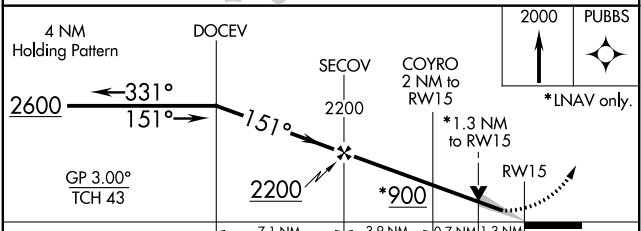
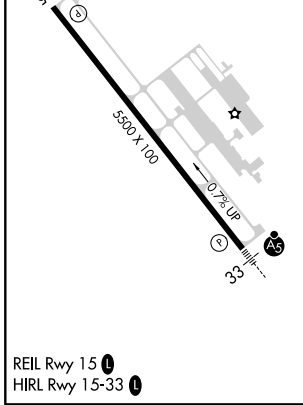
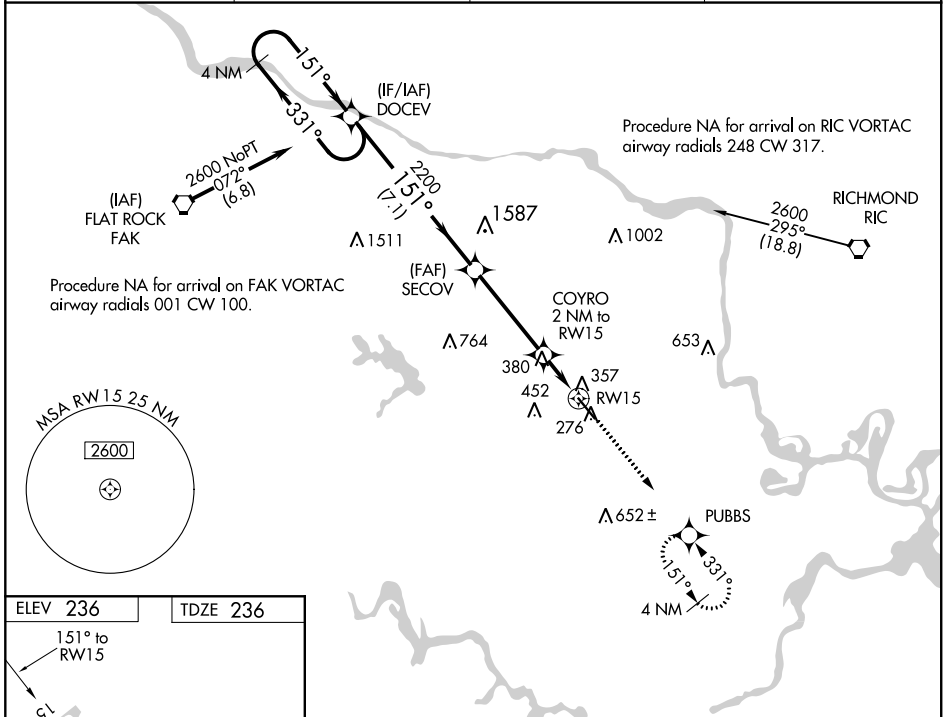
WAAS CH 63216 W15A	APP CRS 151°	Rwy Idg 5500 TDZE 236 Apt Elev 236
--	------------------------	---

RNAV (GPS) RWY 15

RICHMOND EXECUTIVE-CHESTERFIELD COUNTY (F'CI)

RNP APCH.	<p>▼ NA For uncompensated Baro-VNAV systems, LNAV/VNAV NA below -15°C or above 54°C. When local altimeter setting not received, use Richmond Intl altimeter setting and increase all DA 36 feet, and all MDA 40 feet, increase LNAV/VNAV all Cats visibility 1/4 mile. VDP and Baro-VNAV NA when using Richmond Intl altimeter setting.</p>	MISSED APPROACH: Climb to 2000 direct PUBBS and hold.
-----------	--	---

AWOS-3PT 128.625	POTOMAC APP CON 126.75 307.2	CLNC DEL 124.6	UNICOM 123.05 (CTAF)
----------------------------	--	--------------------------	--------------------------------



	7.1 NM		3.9 NM		0.7 NM		1.3 NM	
CATEGORY	A	B	C	D				
LPV DA	486-1 250 (300-1)							
LNAV/VNAV DA	692-1½ 456 (500-1½)							
LNAV MDA	680-1 444 (500-1)		680-1⅜ 444 (500-1⅜)		680-1½ 444 (500-1½)			

NE-3, 08 OCT 2020 to 05 NOV 2020

NE-3, 08 OCT 2020 to 05 NOV 2020

WAAS CH 56221 W33A	APP CRS 331°	Rwy Idg TDZE Apt Elev	5500 217 236
--	------------------------	-----------------------------	---

RNAV (GPS) RWY 33

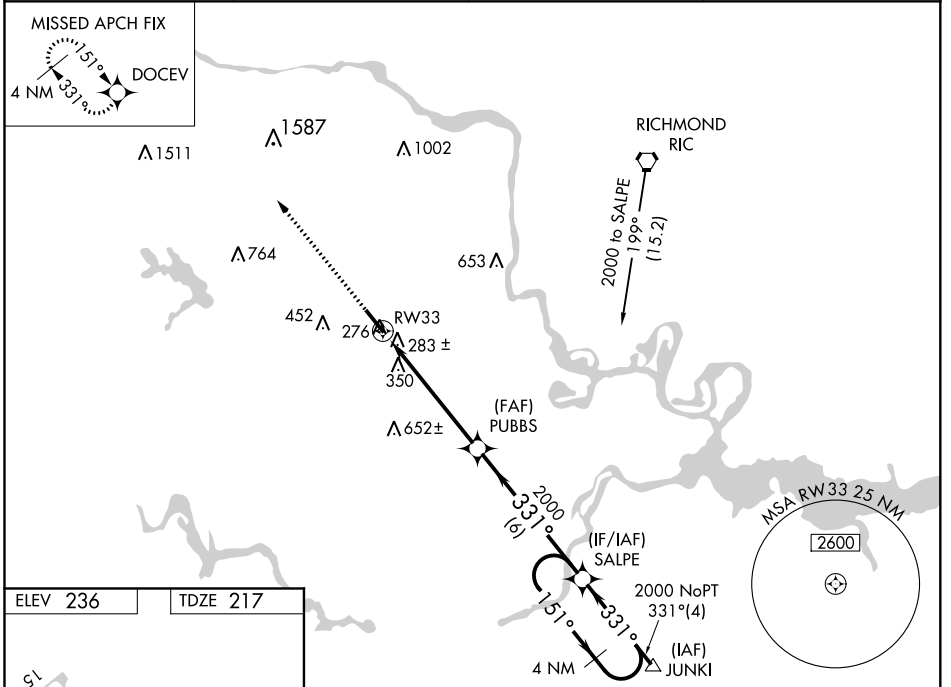
RICHMOND EXECUTIVE-CHESTERFIELD COUNTY (F'CI)

▼ For uncompensated Baro-VNAV systems, LNAV/VNAV NA below -15°C (5°F) or above 54°C (130°F). When local altimeter setting not received, use Richmond Intl altimeter setting and increase all DA 36 feet and all MDA 40 feet; increase LPV and LNAV/VNAV all Cats and LNAV Cats C/D and Circling Cat C visibility 1/8 mile. DME/DME RNP-0.3 NA. For inop MALSR, increase LPV all Cats visibility to 1 mile and LNAV Cat C/D to 1 3/8 mile. For inop MALSR when using Richmond Intl altimeter setting, increase LPV all Cats visibility to 1 1/8 mile. Baro-VNAV and VDP NA when using Richmond Intl altimeter setting.

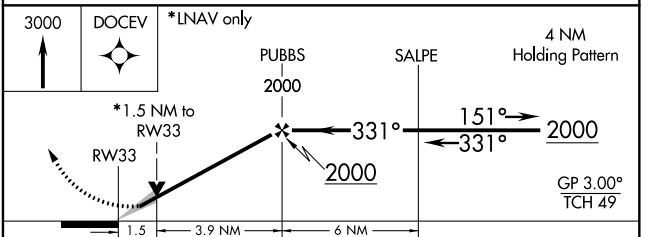
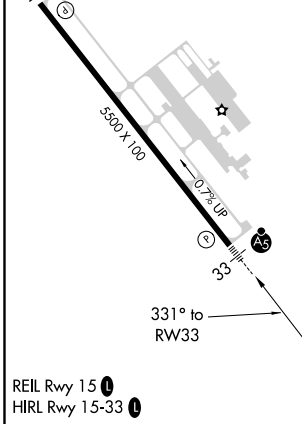
⚠ NA

MALSR
MISSED APPROACH:
Climb to 3000 direct
DOCEV and hold.

AWOS-3PT 128.625	POTOMAC APP CON 126.75 307.2	CLNC DEL 124.6	UNICOM 123.05 (CTAF)
----------------------------	--	--------------------------	--------------------------------



ELEV 236	TDZE 217
----------	----------



CATEGORY	A	B	C	D
LPV DA	510-1/2 293 (300-1/2)			
LNAV/VNAV DA	598-7/8 381 (400-7/8)			
LNAV MDA	720-1/2	503 (500-1/2)	720-1	503 (500-1)
CIRCLING	720-1	484 (500-1)	760-1/2 524 (600-1/2)	800-2 564 (600-2)

RNAV (GPS) RWY 33

NE-3, 08 OCT 2020 to 05 NOV 2020

NE-3, 08 OCT 2020 to 05 NOV 2020