

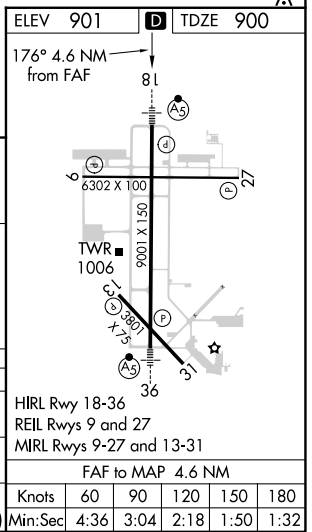
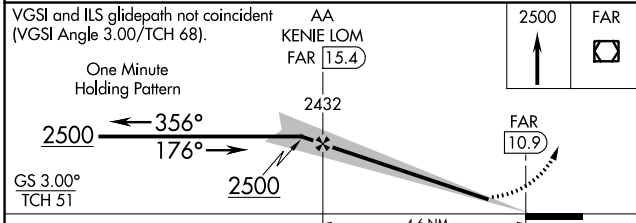
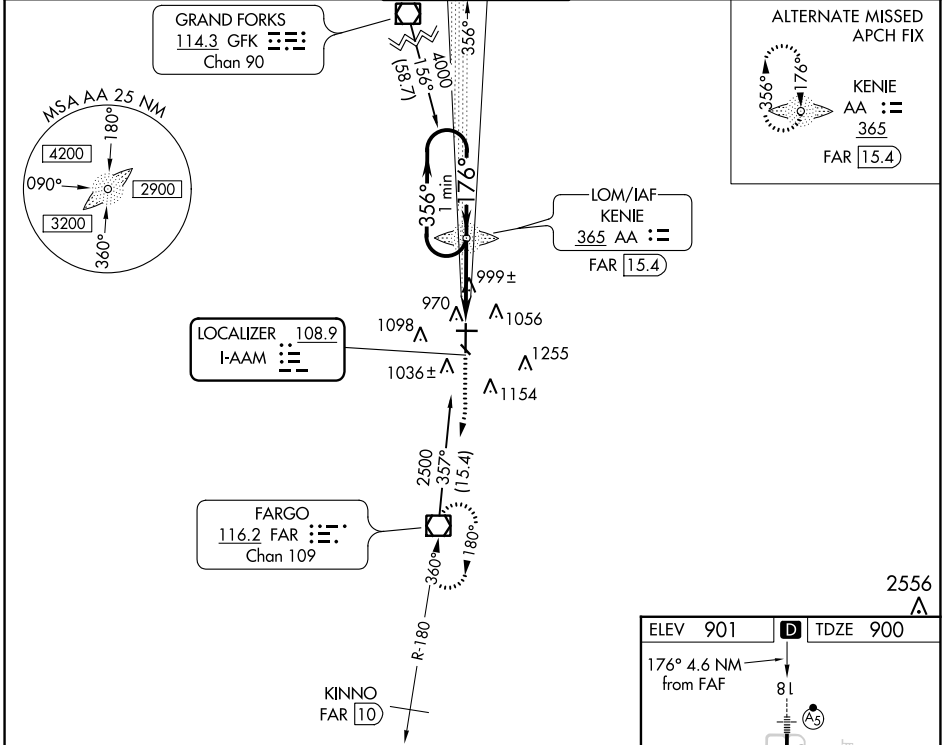
LOC I-AAM 108.9	APP CRS 176°	Rwy Idg 9001	TDZE 900	Apt Elev 901
---------------------------	------------------------	-----------------	-------------	-----------------

ILS or LOC RWY 18

HECTOR INTL (FAR)

ADF or DME required for procedure entry.		MALSRS 	MISSED APPROACH: Climb to 2500 direct FAR VOR/DME and hold.
<p></p> <p>For inop MALSRS, increase S-ILS 18 Cat E visibility to RVR 4000, and S-LOC 18 Cat E visibility to RVR 5000.</p> <p>* Visibility Cat A/B/C/D RVR 1800 authorized with the use of FD or AP or HUD to DA.</p>			

ATIS 124.5 379.2	FARGO APP CON 120.4 377.15	FARGO TOWER 133.8 290.4	GND CON 121.9 348.6	CLNC DEL 121.9 348.6
----------------------------	--------------------------------------	-----------------------------------	-------------------------------	--------------------------------



CATEGORY	A	B	C	D	E
S-ILS 18*	1100/24 200 (200-½)				
S-LOC 18	1260/24	360 (400-½)	1260/40		360 (400-¾)
CIRCLING	1380-1	479 (500-1)	1520-1¾ 619 (700-1¾)	1620-2¼ 719 (800-2¼)	1620-2½ 719 (800-2½)

LOC/DME I-FAR 110.3 Chan 40	APP CRS 356°	Rwy Idg TDZE Apt Elev	9001 899 901
---	------------------------	-----------------------------	---

ILS or LOC RWY 36

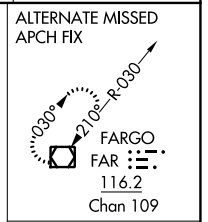
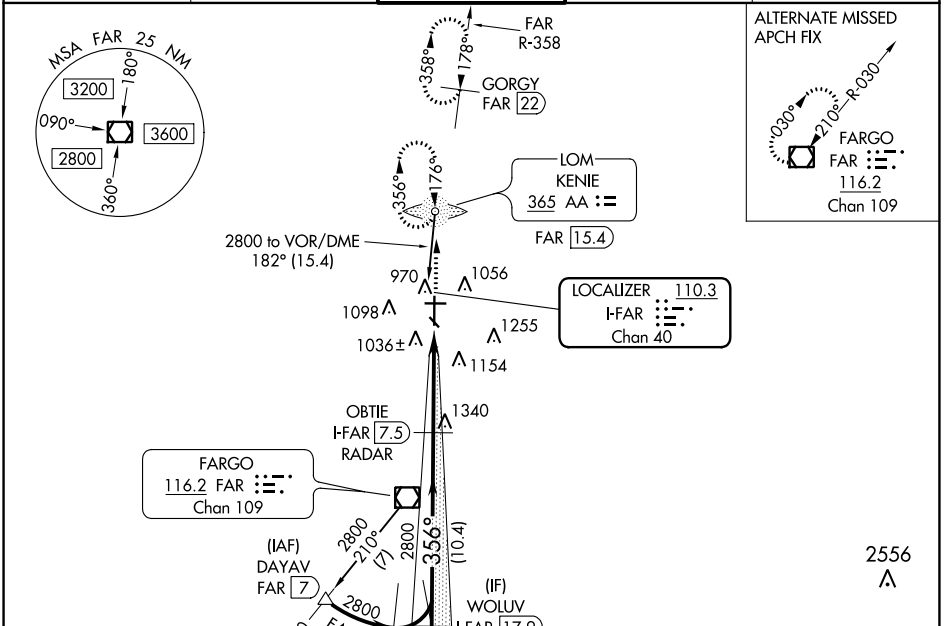
HECTOR INTL (F.A.R.)

ADF or DME required for procedure entry. ADF or DME required.

MAJLSR
 MISSED APPROACH: Climb to 2500 direct KENIE LOM and hold (DME aircraft climb to 4000 on FAR VOR/DME R-358 to GORGY/22 DME and hold N, RT, 178° inbound, continue climb-in-hold to 4000).

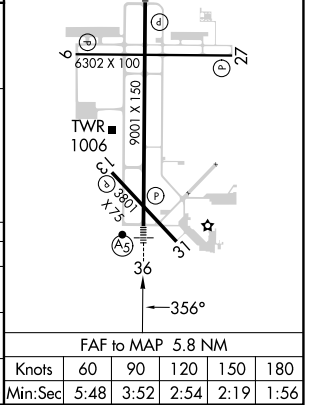
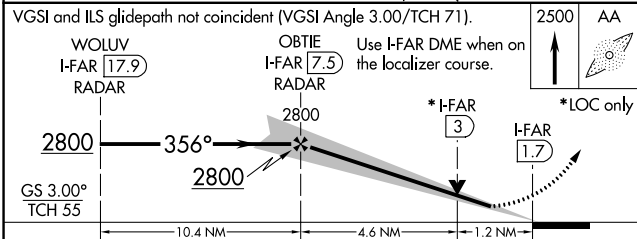
⚠ For inop ALS increase S-ILS 36 Cat E visibility to RVR 4000 and S-LOC 36 Cat C/D/E visibility to 1/8 SM. #RVR 1800 authorized with use of FD or AP or HUD to DA.

ATIS 124.5 379.2	FARGO APP CON 120.4 377.15	FARGO TOWER 133.8 290.4	GND CON 121.9 348.6	CINC DEL 121.9 348.6
----------------------------	--------------------------------------	-----------------------------------	-------------------------------	--------------------------------



ELEV 901	TDZE 899
----------	----------

MIRL Rwy 9-27 and 13-31
REIL Rwy 9 and 27
HIRL Rwy 18-36 81



CATEGORY	A	B	C	D	E	
S-ILS 36#	1099/24 200 (200-1/2)					
S-LOC 36	1360/24	461 (500-1/2)	1360/50 461 (500-1)			
CIRCLING	1380-1	479 (500-1)	1520-1 3/4 619 (700-1 3/4)	1620-2 1/4 719 (800-2 1/4)	1620-2 1/2 719 (800-2 1/2)	
FAF to MAP 5.8 NM						
Knots		60	90	120	150	180
Min:Sec		5:48	3:52	2:54	2:19	1:56

NC-1, 22 FEB 2024 to 21 MAR 2024

NC-1, 22 FEB 2024 to 21 MAR 2024

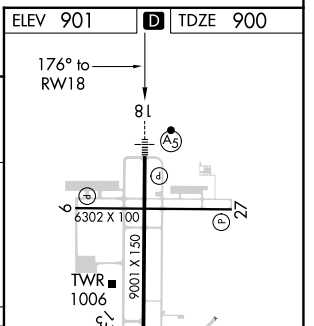
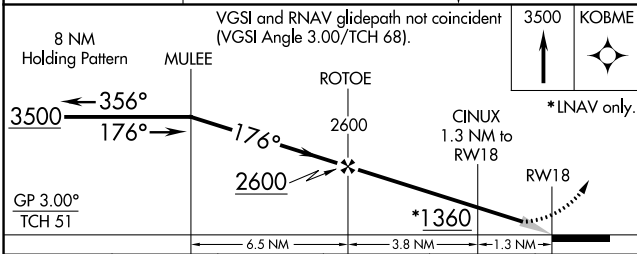
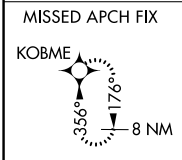
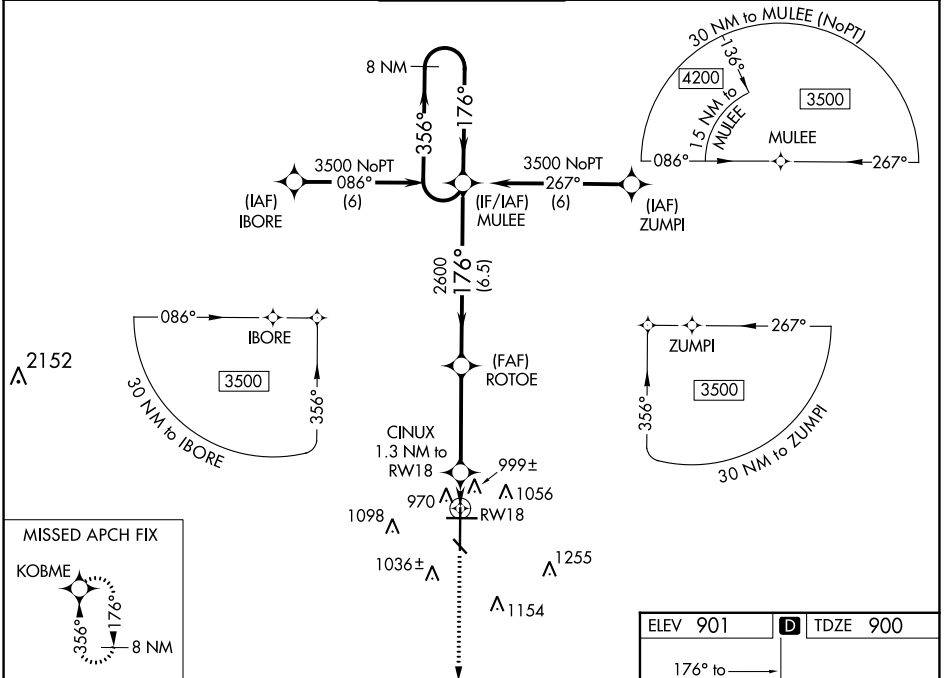
WAAS CH 40006 W18A	APP CRS 176°	Rwy Idg TDZE Apt Elev	9001 900 901
--	------------------------	-----------------------------	---

RNAV (GPS) RWY 18

HECTOR INTL (FAR)

RNP APCH.	MALSR	MISSED APPROACH:
<p>For inoperative MALSR, increase LPV Cat E visibility to RVR 4000 and LNAV/VNAV Cat E and LNAV Cat D and E to RVR 6000. For uncompensated Baro-VNAV systems, LNAV/VNAV NA below -16°C (4°F) or above 47°C (116°F). #RVR 1800 authorized with use of FD or AP or HUD to DA.</p>		<p>Climb to 3500 direct KOBME and hold.</p>

ATIS 124.5 379.2	FARGO APP CON 120.4 377.15	FARGO TOWER 133.8 290.4	GND CON 121.9 348.6	CLNC DEL 121.9 348.6
----------------------------	--------------------------------------	--	-------------------------------	--------------------------------



CATEGORY	A	B	C	D	E
LPV DA#	1100/24		200 (200-½)		
LNAV/VNAV DA	1272/40		372 (400-¾)		
LNAV MDA	1260/24 360 (400-½)		1260/50 360 (400-1)		
CIRCLING	1380-1 479 (500-1)	1520-1¾ 619 (700-1¾)	1620-2¼ 719 (800-2¼)	1620-2½ 719 (700-2½)	

HIRL Rwy 18-36
 REIL Rwys 9 and 27
 MIRL Rwys 9-27 and 13-31

NC-1, 22 FEB 2024 to 21 MAR 2024

NC-1, 22 FEB 2024 to 21 MAR 2024

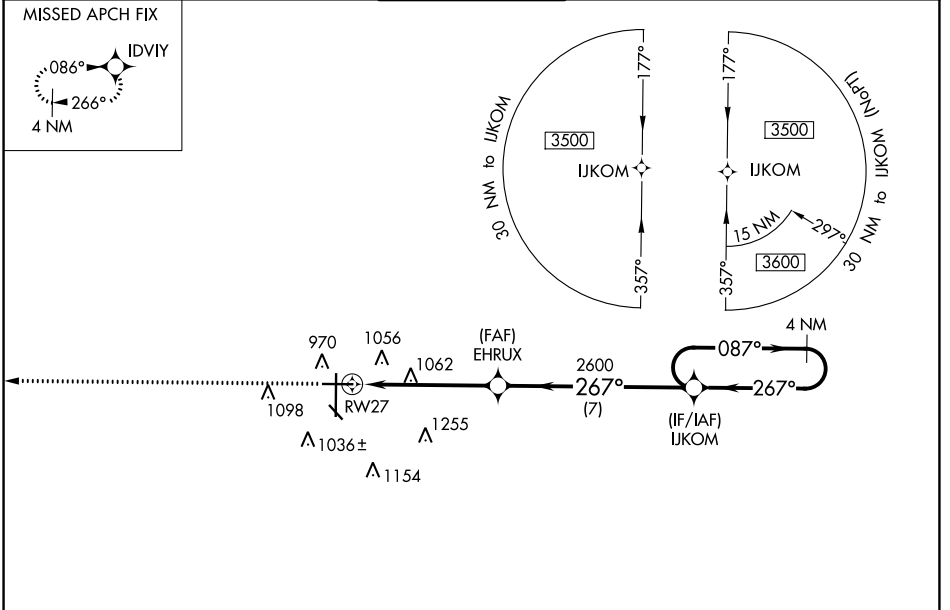
WAAS CH 65733 W27A	APP CRS 267°	Rwy ldg 6302 TDZE 899 Apt Elev 901
--	------------------------	---

RNAV (GPS) RWY 27

HECTOR INTL (F.A.R.)

RNP APCH.		MISSED APPROACH: Climb to 3500 direct IDVIY and hold.		
Baro-VNAV NA. Rwy 27 helicopter visibility reduction below 3/4 SM NA.				

ATIS 124.5 379.2	FARGO APP CON 120.4 377.15	FARGO TOWER 133.8 290.4	GND CON 121.9 348.6	CLNC DEL 121.9 348.6
----------------------------	--------------------------------------	-----------------------------------	-------------------------------	--------------------------------



NC-1, 22 FEB 2024 to 21 MAR 2024

NC-1, 22 FEB 2024 to 21 MAR 2024

ELEV 901	D	TDZE 899		
			<p>1637</p> <p>3500 IDVIY</p> <p>*LNAV only</p> <p>*1.2 NM to RW27</p> <p>EHRUX 2600</p> <p>IJKOM 4 NM Holding Pattern</p> <p>087° → 3500</p> <p>← 267°</p> <p>GP 3.00° TCH 42</p>	
CATEGORY	A	B	C	D
LPV DA	1149-3/4		250 (300-3/4)	
LNAV/VNAV DA	1231-1/8		332 (400-1/8)	
LNAV MDA	1320-1	421 (500-1)	1320-1/4	421 (500-1/4)
C CIRCLING	1380-1	479 (500-1)	1520-1/4 619 (700-1/4)	1620-2/4 719 (800-2/4)

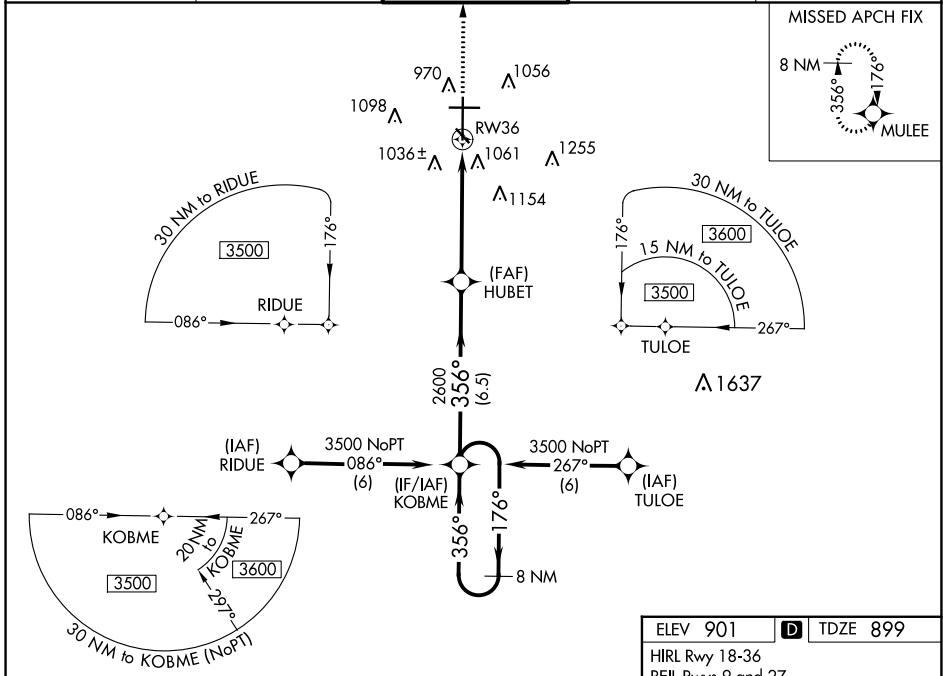
WAAS CH 50106 W36A	APP CRS 356°	Rwy Idg TDZE Apt Elev	9001 899 901
--	------------------------	-----------------------------	---

RNAV (GPS) RWY 36

HECTOR INTL (F.A.R.)

RNP APCH. Baro-VNAV NA below -16°C (4°F). For inop MALSR, increase LPV Cat E visibility to RVR 4000, and increase LNAV/VNAV and LNAV Cat E visibility to 1½ mile.	MALSR 	MISSED APPROACH: Climb to 3500 direct MULEE and hold.
--	-----------	---

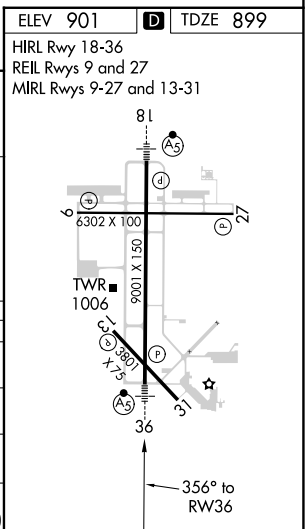
ATIS 124.5 379.2	FARGO APP CON 120.4 377.15	FARGO TOWER 133.8 290.4	GND CON 121.9 348.6	CLNC DEL 121.9 348.6
----------------------------	--------------------------------------	--	-------------------------------	--------------------------------



NC-1, 22 FEB 2024 to 21 MAR 2024

NC-1, 22 FEB 2024 to 21 MAR 2024

8 NM Holding Pattern		VGSIs and RNAV glidepath not coincident (VGSi Angle 3.00/TCH 71).		3500	MULEE
3500 ← 176°		→ 356°		*1.4 NM to RW36	
GP 3.00°		TCH 55		*LNAV only.	
6.5 NM		3.7 NM		1.4 NM	
CATEGORY	A	B	C	D	E
LPV DA	1150/24 251 (300-½)			1360/60	
LNAV/VNAV DA	1360/50 461 (500-1)			461 (500-1¼)	
LNAV MDA	1420/24	521 (600-½)	1420/50 521 (600-1)	1420/60	521 (600-1¼)
CIRCLING	1420-1	519 (600-1)	1520-1¾ 619 (700-1¾)	1620-2¼ 719 (800-2¼)	1620-2½ 719 (800-2½)

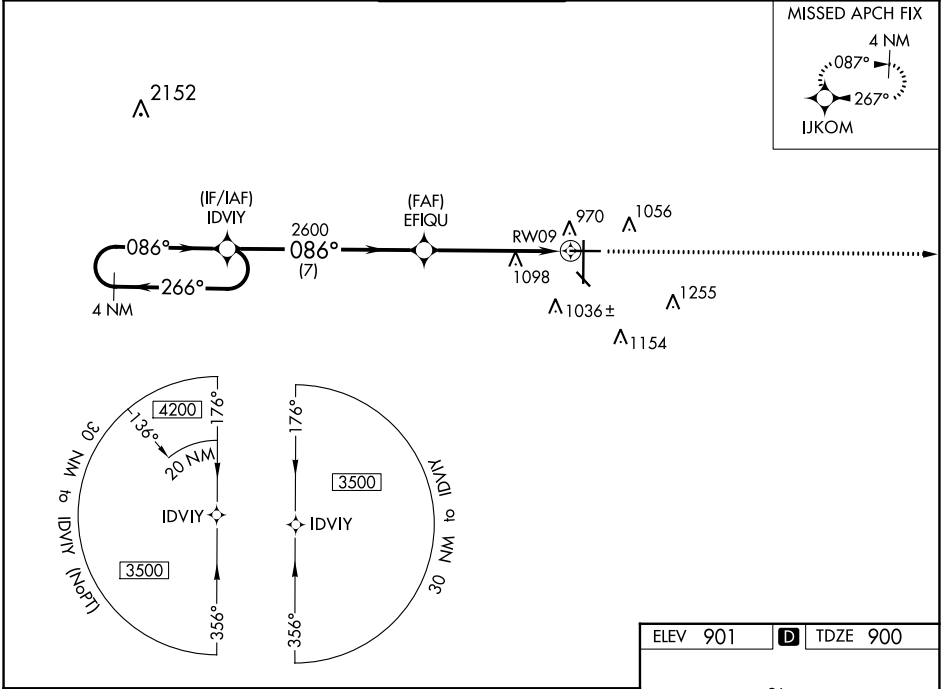


WAAS CH 97433 W09A	APP CRS 086°	Rwy ldg TDZE Apt Elev	6302 900 901
--	------------------------	-----------------------------	---

RNAV (GPS) RWY 9

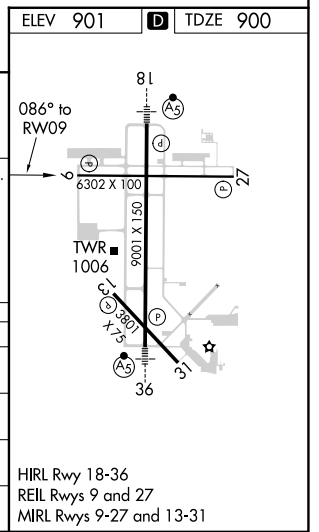
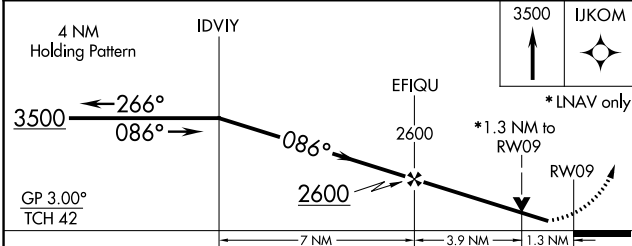
HECTOR INTL (F.A.R.)

RNP APCH.		MISSED APPROACH: Climb to 3500 direct IJKOM and hold.		
Baro-VNAV NA. Rwy 9 helicopter visibility reduction below 3/4 SM NA.				
ATIS 124.5 379.2	FARGO APP CON 120.4 377.15	FARGO TOWER 133.8 290.4	GND CON 121.9 348.6	CLNC DEL 121.9 348.6



NC-1, 22 FEB 2024 to 21 MAR 2024

NC-1, 22 FEB 2024 to 21 MAR 2024



CATEGORY	A	B	C	D
LPV DA		1150-3/4	250 (300-3/4)	
LNAV/VNAV DA		1171-7/8	271 (300-7/8)	
LNAV MDA	1360-1	460 (500-1)	1360-1 3/8	460 (500-1 3/8)
CIRCLING	1380-1	479 (500-1)	1520-1 3/4	1620-2 1/4
			619 (700-1 3/4)	719 (800-2 1/4)

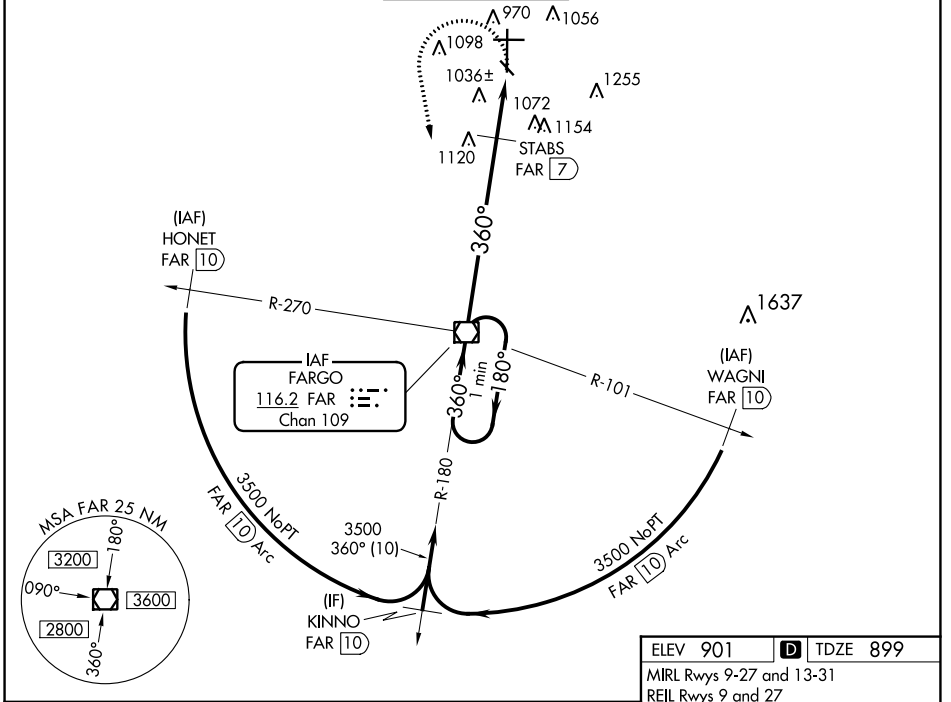
HIRL Rwy 18-36
REIL Rwy 9 and 27
MIRL Rwy 9-27 and 13-31

VOR/DME FAR 116.2 Chan 109	APP CRS 360°	Rwy Idg TDZE 899 Apt Elev 901
--	------------------------	---

VOR RWY 36

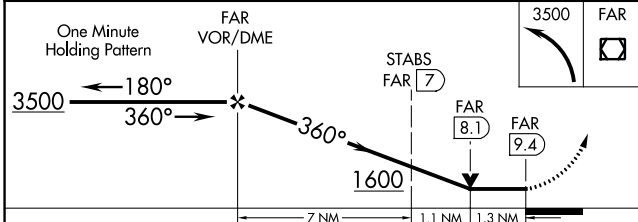
HECTOR INTL (FAR)

For inop MALSRS, increase S-36 Cat E visibility to 2½ miles. STABS Fix Minimums: For inop MALSRS, increase S-36 Cat E visibility to 1¾ mile.	MALSRS 		MISSED APPROACH: Climbing left turn to 3500 direct FAR VOR/DME and hold.	
	ATIS 124.5 379.2	FARGO APP CON 120.4 377.15	FARGO TOWER 133.8 290.4	GND CON 121.9 348.6



NC-1, 22 FEB 2024 to 21 MAR 2024

NC-1, 22 FEB 2024 to 21 MAR 2024



ELEV 901 TDZE 899

MRL Rwy 9-27 and 13-31
REIL Rwy 9 and 27
HIRL Rwy 18-36 81

360° 9.4 NM from FAF
FAF to MAP 9.4 NM

Knots	60	90	120	150	180
Min:Sec	9:24	6:16	4:42	3:46	3:08

CATEGORY	A	B	C	D	E
S-36	1600/24	701 (700-½)	1600-1½ 701 (700-1½)	1600-1¾ 701 (700-1¾)	1600-2 701 (700-2)
CIRCLING	1600-1	699 (700-1)	1600-2 699 (700-2)	1620-2¼ 719 (700-2¼)	1620-2½ 719 (700-2½)
STABS FIX MINIMUMS					
S-36	1380/24	481 (500-½)	1380/40 481 (500-¾)	1380/50 481 (500-1)	1380/60 481 (500-1½)
CIRCLING	1380-1	479 (500-1)	1520-1¾ 619 (700-1¾)	1620-2¼ 719 (800-2¼)	1620-2½ 719 (800-2½)